

CONFLUENCE RESOURCES



Location:	COLORADO	Slot:	SLOT#18 Flaherty 13-8-3 (413°FSL & 1693°FWL,SEC.18)
Field:	WELD COUNTY (NAD83, TRUE NORTH)	Well:	Flaherty 13-8-3
Facility:	SEC.18-T04N-R62W	Wellbore:	Flaherty 13-8-3 PWB
Plot reference wellpath is Flaherty 13-8-3 PWP Rev-A.0		Grid System: NAD83 / Lambert Colorado SP, Northern Zone (501), US feet	
True vertical depths are referenced to Rig (23) (KB)		North Reference: True north	
Reference wellpath measured depths are referenced to Rig (23) (KB)		Scale: True distance	
Rig (23) (KB) to Mean Sea Level: 4586 feet		Coordinates are in feet referenced to Slot	
Mean Sea Level to Mud line (At Slot: SLOT#18 Flaherty 13-8-3 (413°FSL & 1693°FWL,SEC.18)): 0 feet		Depths are in feet	
Offset wellpath MDs are referenced to each path's default MD datum		Created by: painseir on 2021-12-02; Database: WellArchitectDB	

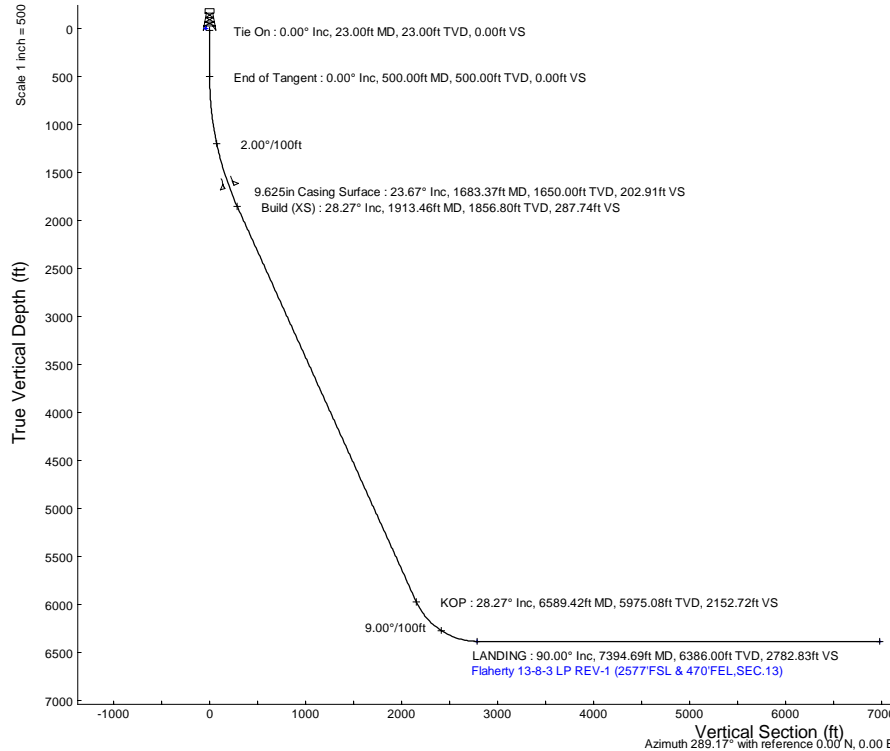
Location Information					
Facility Name			Grid East (US ft)	Grid North (US ft)	Latitude
SEC.18-T04N-R62W			3314967.040	1356246.051	40.3057900°
Slot			Local N (ft)	Local E (ft)	Latitude
SLOT#18 Flaherty 13-8-3 (413°FSL & 1693°FWL,SEC.18)			189.44	44.63	3315009.247
Rig (23) (KB) to Mud line (At Slot: SLOT#18 Flaherty 13-8-3 (413°FSL & 1693°FWL,SEC.18))			Grid North (US ft)		
Mean Sea Level to Mud line (At Slot: SLOT#18 Flaherty 13-8-3 (413°FSL & 1693°FWL,SEC.18))			40.3063100°		
Rig (23) (KB) to Mean Sea Level			-104.3704800°		

Hole and Casing Sections										
Name	Start MD (ft)	End MD (ft)	Interval (ft)	Start TVD (ft)	End TVD (ft)	Start Local N (ft)	Start Local E (ft)	End Local N (ft)	End Local E (ft)	Wellbore
9.625in Casing Surface	23.00	1683.37	1660.37	23.00	1650.00	0.00	0.00	189.37	-148.98	Flaherty 13-8-3 PWB

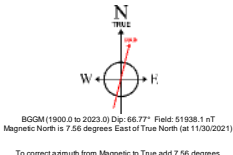
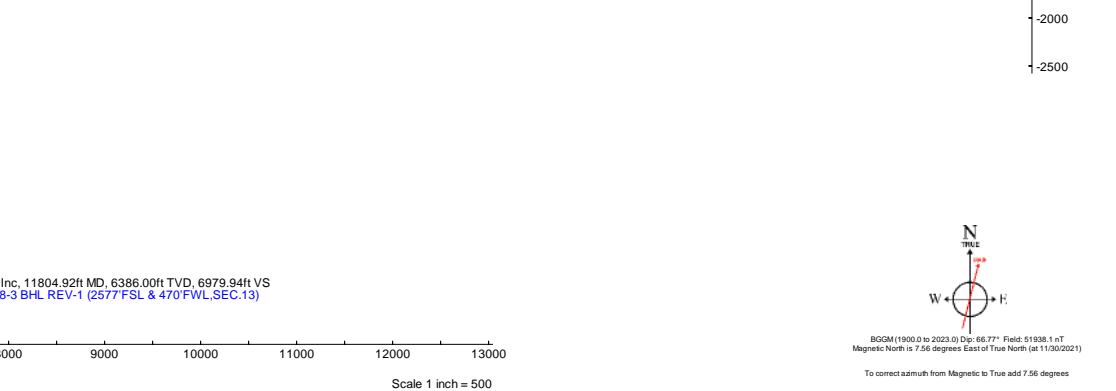
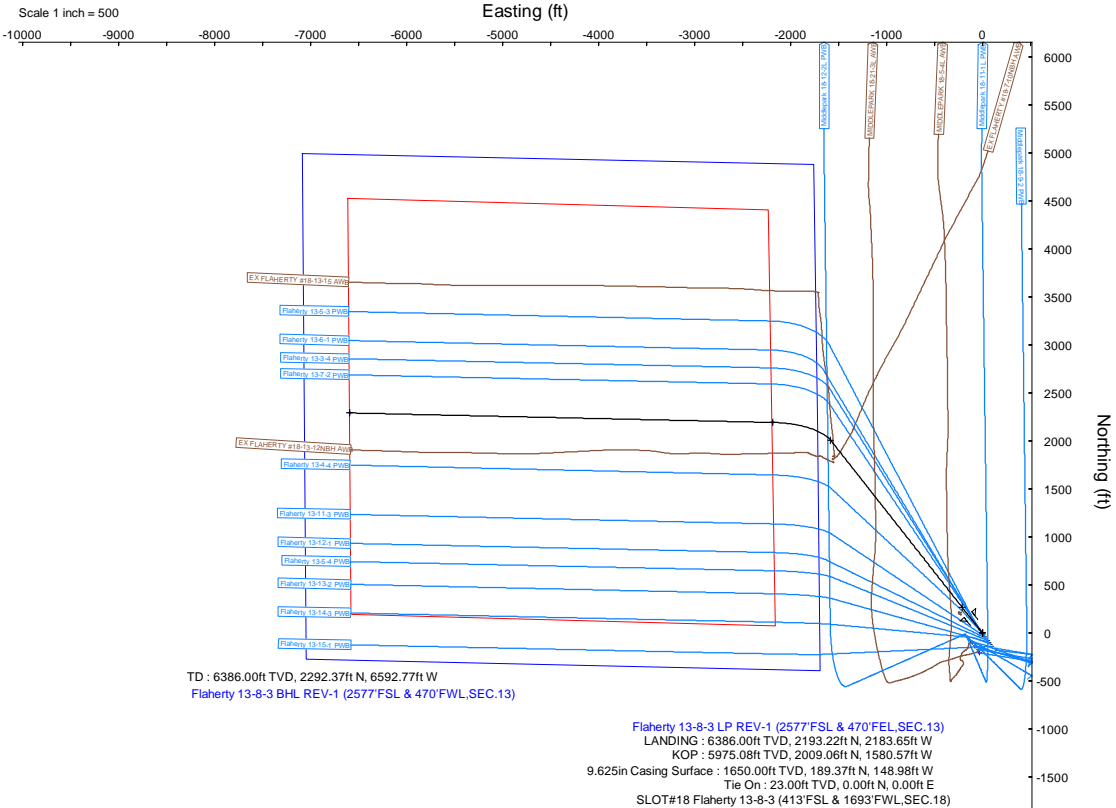
Survey Program					
Start MD (ft)	End MD (ft)	Tool		Model	Log Name/Comment
23.00	1683.37	BH NavTrak (2019)		BH NavTrak (2019) (Axial)	Flaherty 13-8-3 PWB
1683.37	11804.92	BH AutoTrak Curve/xpress (2019)		BH AutoTrak Curve/xpress (2019) (Short spacing)	Flaherty 13-8-3 PWB

Bottom Hole Location									
MD (ft)	Inc (°)	Az (°)	TVD (ft)	Local N (ft)	Local E (ft)	Grid East (US ft)	Grid North (US ft)	Latitude	Longitude
11804.92	90.000	271.288	6386.00	2292.37	-6592.77	3308388.11	1358644.14	40.3126000°	-104.3941200°

Targets									
Name	MD (ft)	TVD (ft)	Local N (ft)	Local E (ft)	Grid East (US ft)	Grid North (US ft)	Latitude	Longitude	
SEC.13-T04N-R63W	N/A	0.00	-207.65	-27.89	3314984.00	1356228.05	40.3057400°	-104.3705800°	
SEC.13-T04N-R63W (SB 470)	N/A	0.00	-207.65	-27.89	3314984.00	1356228.05	40.3057400°	-104.3705800°	
Flaherty 13-8-3 BHL REV-1 (2577°FSL & 470°FWL,SEC.13)	11804.92	6386.00	2292.37	-6592.77	3308388.11	1358644.14	40.3126000°	-104.3941200°	
Flaherty 13-8-3 LP REV-1 (2577°FSL & 470°FEL,SEC.13)	7394.69	6386.00	2193.22	-2183.65	3312797.93	1358601.17	40.3123300°	-104.37893100°	



Well Profile Data								
Design Comment	MD (ft)	Inc (°)	Az (°)	TVD (ft)	Local N (ft)	Local E (ft)	DLS (°/100ft)	VS (ft)
Tie On	23.00	0.000	321.807	23.00	0.00	0.00	0.00	0.00
End of Tangent	500.00	0.000	321.807	500.00	0.00	0.00	0.00	0.00
Build (XS)	1913.46	28.269	321.807	1856.80	268.53	-211.26	2.00	287.74
KOP	6589.42	28.269	321.807	5975.08	2009.06	-1580.57	0.00	2152.72
LANDING	7394.69	90.000	271.288	6386.00	2193.22	-2183.65	9.00	2782.83
TD	11804.92	90.000	271.288	6386.00	2292.37	-6592.77	0.00	6979.94



Planned Wellpath Report

Flaherty 13-8-3 PWP Rev-A.0

Page 1 of 8

REFERENCE WELLPATH IDENTIFICATION

Operator	CONFLUENCE RESOURCES	Well	Flaherty 13-8-3
Field	WELD COUNTY (NAD83, TRUE NORTH)	API	0512347439
Facility	SEC.18-T04N-R62W	Wellbore	Flaherty 13-8-3 PWB
Slot	SLOT#18 Flaherty 13-8-3 (413'FSL & 1693'FWL,SEC.18)		

REPORT SETUP INFORMATION

Projection System	NAD83 / Lambert Colorado SP, Northern Zone (501), US feet	Software System	WellArchitect® 6.0
North Reference	True	User	Painsetr
Scale	0.999957	Report Generated	12/2/2021 at 2:01:10 PM
Convergence at slot	0.73° East	Database	WellArchitectDB

WELLPATH LOCATION

	Local coordinates		Grid coordinates		Geographic coordinates	
	North[ft]	East[ft]	Easting[US ft]	Northing[US ft]	Latitude	Longitude
Slot Location	189.44	44.63	3315009.25	1356436.04	40.3063100°	-104.3704800°
Facility Reference Pt			3314967.04	1356246.05	40.3057900°	-104.3706400°
Field Reference Pt			3230456.90	1245096.09	40.0032400°	-104.6773400°

WELLPATH DATUM

Calculation method	Minimum curvature	Rig (23') (KB) to Facility Vertical Datum	4586.00ft
Horizontal Reference Pt	Slot	Rig (23') (KB) to Mean Sea Level	4586.00ft
Vertical Reference Pt	Rig (23') (KB)	Rig (23') (KB) to Mud Line at Slot (SLOT#18 Flaherty 13-8-3 (413'FSL & 1693'FWL,SEC.18))	4586.00ft
MD Reference Pt	Rig (23') (KB)	Section Origin	N 0.00, E 0.00 ft
Field Vertical Reference	Mean Sea Level	Section Azimuth	289.17°

Planned Wellpath Report

Flaherty 13-8-3 PWP Rev-A.0

Page 2 of 8

REFERENCE WELLPATH IDENTIFICATION

Operator	CONFLUENCE RESOURCES	Well	Flaherty 13-8-3
Field	WELD COUNTY (NAD83, TRUE NORTH)	API	0512347439
Facility	SEC.18-T04N-R62W	Wellbore	Flaherty 13-8-3 PWB
Slot	SLOT#18 Flaherty 13-8-3 (413'FSL & 1693'FWL,SEC.18)		

WELLPATH DATA (124 stations) † = interpolated, ‡ = extrapolated station

MD [ft]	Inclination [°]	Azimuth [°]	TVD [ft]	Vert Sect [ft]	North [ft]	East [ft]	Grid East [US ft]	Grid North [US ft]	Latitude	Longitude	DLS [°/100ft]	Comments
0.00†	0.000	321.807	0.00	0.00	0.00	0.00	3315009.25	1356436.03	40.3063100	-104.3704800	0.00	
23.00	0.000	321.807	23.00	0.00	0.00	0.00	3315009.25	1356436.03	40.3063100	-104.3704800	0.00	Tie On
123.00†	0.000	321.807	123.00	0.00	0.00	0.00	3315009.25	1356436.03	40.3063100	-104.3704800	0.00	
223.00†	0.000	321.807	223.00	0.00	0.00	0.00	3315009.25	1356436.03	40.3063100	-104.3704800	0.00	
323.00†	0.000	321.807	323.00	0.00	0.00	0.00	3315009.25	1356436.03	40.3063100	-104.3704800	0.00	
423.00†	0.000	321.807	423.00	0.00	0.00	0.00	3315009.25	1356436.03	40.3063100	-104.3704800	0.00	
500.00	0.000	321.807	500.00	0.00	0.00	0.00	3315009.25	1356436.03	40.3063100	-104.3704800	0.00	End of Tangent
523.00†	0.460	321.807	523.00	0.08	0.07	-0.06	3315009.19	1356436.11	40.3063102	-104.3704802	2.00	
623.00†	2.460	321.807	622.96	2.22	2.07	-1.63	3315007.59	1356438.09	40.3063157	-104.3704859	2.00	
723.00†	4.460	321.807	722.77	7.31	6.82	-5.36	3315003.80	1356442.78	40.3063287	-104.3704992	2.00	
823.00†	6.460	321.807	822.32	15.32	14.30	-11.25	3314997.82	1356450.19	40.3063492	-104.3705203	2.00	
923.00†	8.460	321.807	921.46	26.25	24.50	-19.27	3314989.66	1356460.29	40.3063772	-104.3705491	2.00	
1023.00†	10.460	321.807	1020.10	40.09	37.42	-29.44	3314979.34	1356473.07	40.3064127	-104.3705855	2.00	
1123.00†	12.460	321.807	1118.10	56.82	53.03	-41.72	3314966.86	1356488.53	40.3064556	-104.3706296	2.00	
1223.00†	14.460	321.807	1215.35	76.42	71.32	-56.11	3314952.23	1356506.63	40.3065058	-104.3706812	2.00	
1323.00†	16.460	321.807	1311.73	98.87	92.27	-72.59	3314935.49	1356527.37	40.3065633	-104.3707403	2.00	
1423.00†	18.460	321.807	1407.11	124.14	115.85	-91.14	3314916.64	1356550.71	40.3066280	-104.3708068	2.00	
1523.00†	20.460	321.807	1501.40	152.19	142.03	-111.74	3314895.71	1356576.63	40.3066999	-104.3708806	2.00	
1623.00†	22.460	321.807	1594.46	183.00	170.79	-134.36	3314872.73	1356605.09	40.3067788	-104.3709617	2.00	
1723.00†	24.460	321.807	1686.19	216.52	202.07	-158.98	3314847.72	1356636.06	40.3068647	-104.3710500	2.00	
1823.00†	26.460	321.807	1776.47	252.72	235.86	-185.55	3314820.71	1356669.50	40.3069574	-104.3711453	2.00	
1913.46	28.269	321.807	1856.80	287.74	268.53	-211.26	3314794.59	1356701.84	40.3070471	-104.3712375	2.00	Build (XS)
1923.00†	28.269	321.807	1865.21	291.54	272.09	-214.06	3314791.75	1356705.36	40.3070569	-104.3712475	0.00	
2023.00†	28.269	321.807	1953.28	331.43	309.31	-243.34	3314762.00	1356742.21	40.3071590	-104.3713525	0.00	
2123.00†	28.269	321.807	2041.36	371.31	346.53	-272.62	3314732.24	1356779.05	40.3072612	-104.3714575	0.00	
2223.00†	28.269	321.807	2129.43	411.20	383.76	-301.91	3314702.49	1356815.90	40.3073634	-104.3715625	0.00	
2323.00†	28.269	321.807	2217.50	451.08	420.98	-331.19	3314672.73	1356852.74	40.3074656	-104.3716675	0.00	
2423.00†	28.269	321.807	2305.58	490.96	458.20	-360.48	3314642.98	1356889.59	40.3075677	-104.3717725	0.00	
2523.00†	28.269	321.807	2393.65	530.85	495.42	-389.76	3314613.23	1356926.43	40.3076699	-104.3718775	0.00	
2623.00†	28.269	321.807	2481.72	570.73	532.65	-419.04	3314583.47	1356963.28	40.3077721	-104.3719825	0.00	

Planned Wellpath Report

Flaherty 13-8-3 PWP Rev-A.0

Page 3 of 8

REFERENCE WELLPATH IDENTIFICATION

Operator	CONFLUENCE RESOURCES	Well	Flaherty 13-8-3
Field	WELD COUNTY (NAD83, TRUE NORTH)	API	0512347439
Facility	SEC.18-T04N-R62W	Wellbore	Flaherty 13-8-3 PWB
Slot	SLOT#18 Flaherty 13-8-3 (413'FSL & 1693'FWL,SEC.18)		

WELLPATH DATA (124 stations) † = interpolated, ‡ = extrapolated station

MD [ft]	Inclination [°]	Azimuth [°]	TVD [ft]	Vert Sect [ft]	North [ft]	East [ft]	Grid East [US ft]	Grid North [US ft]	Latitude	Longitude	DLS [°/100ft]	Comments
2723.00†	28.269	321.807	2569.80	610.62	569.87	-448.33	3314553.72	1357000.12	40.3078742	-104.3720875	0.00	
2823.00†	28.269	321.807	2657.87	650.50	607.09	-477.61	3314523.96	1357036.97	40.3079764	-104.3721925	0.00	
2923.00†	28.269	321.807	2745.94	690.39	644.32	-506.90	3314494.21	1357073.81	40.3080786	-104.3722975	0.00	
3023.00†	28.269	321.807	2834.01	730.27	681.54	-536.18	3314464.45	1357110.66	40.3081808	-104.3724025	0.00	
3123.00†	28.269	321.807	2922.09	770.16	718.76	-565.47	3314434.70	1357147.50	40.3082829	-104.3725075	0.00	
3223.00†	28.269	321.807	3010.16	810.04	755.98	-594.75	3314404.94	1357184.35	40.3083851	-104.3726125	0.00	
3323.00†	28.269	321.807	3098.23	849.93	793.21	-624.03	3314375.19	1357221.19	40.3084873	-104.3727175	0.00	
3423.00†	28.269	321.807	3186.31	889.81	830.43	-653.32	3314345.43	1357258.04	40.3085895	-104.3728225	0.00	
3523.00†	28.269	321.807	3274.38	929.69	867.65	-682.60	3314315.68	1357294.88	40.3086916	-104.3729275	0.00	
3623.00†	28.269	321.807	3362.45	969.58	904.88	-711.89	3314285.93	1357331.73	40.3087938	-104.3730325	0.00	
3723.00†	28.269	321.807	3450.53	1009.46	942.10	-741.17	3314256.17	1357368.57	40.3088960	-104.3731375	0.00	
3823.00†	28.269	321.807	3538.60	1049.35	979.32	-770.45	3314226.42	1357405.42	40.3089981	-104.3732425	0.00	
3923.00†	28.269	321.807	3626.67	1089.23	1016.54	-799.74	3314196.66	1357442.27	40.3091003	-104.3733475	0.00	
4023.00†	28.269	321.807	3714.75	1129.12	1053.77	-829.02	3314166.91	1357479.11	40.3092025	-104.3734525	0.00	
4123.00†	28.269	321.807	3802.82	1169.00	1090.99	-858.31	3314137.15	1357515.96	40.3093047	-104.3735575	0.00	
4223.00†	28.269	321.807	3890.89	1208.89	1128.21	-887.59	3314107.40	1357552.80	40.3094068	-104.3736625	0.00	
4323.00†	28.269	321.807	3978.97	1248.77	1165.44	-916.87	3314077.64	1357589.65	40.3095090	-104.3737675	0.00	
4423.00†	28.269	321.807	4067.04	1288.65	1202.66	-946.16	3314047.89	1357626.49	40.3096112	-104.3738725	0.00	
4523.00†	28.269	321.807	4155.11	1328.54	1239.88	-975.44	3314018.14	1357663.34	40.3097134	-104.3739775	0.00	
4623.00†	28.269	321.807	4243.19	1368.42	1277.10	-1004.73	3313988.38	1357700.18	40.3098155	-104.3740825	0.00	
4723.00†	28.269	321.807	4331.26	1408.31	1314.33	-1034.01	3313958.63	1357737.03	40.3099177	-104.3741876	0.00	
4823.00†	28.269	321.807	4419.33	1448.19	1351.55	-1063.29	3313928.87	1357773.87	40.3100199	-104.3742926	0.00	
4923.00†	28.269	321.807	4507.41	1488.08	1388.77	-1092.58	3313899.12	1357810.72	40.3101220	-104.3743976	0.00	
5023.00†	28.269	321.807	4595.48	1527.96	1426.00	-1121.86	3313869.36	1357847.56	40.3102242	-104.3745026	0.00	
5123.00†	28.269	321.807	4683.55	1567.85	1463.22	-1151.15	3313839.61	1357884.41	40.3103264	-104.3746076	0.00	
5223.00†	28.269	321.807	4771.63	1607.73	1500.44	-1180.43	3313809.85	1357921.25	40.3104285	-104.3747126	0.00	
5323.00†	28.269	321.807	4859.70	1647.62	1537.66	-1209.71	3313780.10	1357958.10	40.3105307	-104.3748176	0.00	
5423.00†	28.269	321.807	4947.77	1687.50	1574.89	-1239.00	3313750.35	1357994.94	40.3106329	-104.3749226	0.00	
5523.00†	28.269	321.807	5035.85	1727.38	1612.11	-1268.28	3313720.59	1358031.79	40.3107351	-104.3750276	0.00	
5623.00†	28.269	321.807	5123.92	1767.27	1649.33	-1297.57	3313690.84	1358068.63	40.3108372	-104.3751326	0.00	

Planned Wellpath Report

Flaherty 13-8-3 PWP Rev-A.0

Page 4 of 8

REFERENCE WELLPATH IDENTIFICATION

Operator	CONFLUENCE RESOURCES	Well	Flaherty 13-8-3
Field	WELD COUNTY (NAD83, TRUE NORTH)	API	0512347439
Facility	SEC.18-T04N-R62W	Wellbore	Flaherty 13-8-3 PWB
Slot	SLOT#18 Flaherty 13-8-3 (413'FSL & 1693'FWL,SEC.18)		

WELLPATH DATA (124 stations) † = interpolated, ‡ = extrapolated station

MD [ft]	Inclination [°]	Azimuth [°]	TVD [ft]	Vert Sect [ft]	North [ft]	East [ft]	Grid East [US ft]	Grid North [US ft]	Latitude	Longitude	DLS [°/100ft]	Comments
5723.00†	28.269	321.807	5211.99	1807.15	1686.56	-1326.85	3313661.08	1358105.48	40.3109394	-104.3752376	0.00	
5823.00†	28.269	321.807	5300.07	1847.04	1723.78	-1356.13	3313631.33	1358142.32	40.3110416	-104.3753426	0.00	
5923.00†	28.269	321.807	5388.14	1886.92	1761.00	-1385.42	3313601.57	1358179.17	40.3111437	-104.3754477	0.00	
6023.00†	28.269	321.807	5476.21	1926.81	1798.22	-1414.70	3313571.82	1358216.01	40.3112459	-104.3755527	0.00	
6123.00†	28.269	321.807	5564.29	1966.69	1835.45	-1443.99	3313542.06	1358252.86	40.3113481	-104.3756577	0.00	
6223.00†	28.269	321.807	5652.36	2006.58	1872.67	-1473.27	3313512.31	1358289.70	40.3114503	-104.3757627	0.00	
6323.00†	28.269	321.807	5740.43	2046.46	1909.89	-1502.55	3313482.56	1358326.55	40.3115524	-104.3758677	0.00	
6423.00†	28.269	321.807	5828.51	2086.34	1947.12	-1531.84	3313452.80	1358363.39	40.3116546	-104.3759727	0.00	
6523.00†	28.269	321.807	5916.58	2126.23	1984.34	-1561.12	3313423.05	1358400.24	40.3117568	-104.3760777	0.00	
6589.42	28.269	321.807	5975.08	2152.72	2009.06	-1580.57	3313403.28	1358424.71	40.3118246	-104.3761475	0.00	KOP
6623.00†	30.135	316.931	6004.39	2166.88	2021.47	-1591.25	3313392.45	1358436.99	40.3118587	-104.3761858	9.00	
6723.00†	36.536	305.356	6087.98	2217.78	2057.11	-1632.75	3313350.50	1358472.09	40.3119565	-104.3763346	9.00	
6823.00†	43.752	296.981	6164.43	2280.76	2090.09	-1687.96	3313294.88	1358504.36	40.3120470	-104.3765325	9.00	
6923.00†	51.435	290.613	6231.86	2354.25	2119.60	-1755.50	3313226.97	1358533.01	40.3121280	-104.3767747	9.00	
7023.00†	59.394	285.501	6288.60	2436.45	2144.92	-1833.72	3313148.44	1358557.32	40.3121975	-104.3770552	9.00	
7123.00†	67.523	281.176	6333.26	2525.33	2165.41	-1920.70	3313061.21	1358576.71	40.3122537	-104.3773671	9.00	
7223.00†	75.755	277.337	6364.75	2618.70	2180.59	-2014.28	3312967.45	1358590.69	40.3122954	-104.3777027	9.00	
7323.00†	84.043	273.770	6382.28	2714.28	2190.07	-2112.17	3312869.45	1358598.92	40.3123214	-104.3780537	9.00	
7394.69	90.000	271.288	6386.00†	2782.83	2193.22	-2183.65	3312797.93	1358601.17	40.3123300	-104.3783100	9.00	LANDING
7423.00†	90.000	271.288	6386.00	2809.77	2193.86	-2211.96	3312769.62	1358601.44	40.3123317	-104.3784115	0.00	
7523.00†	90.000	271.288	6386.00	2904.94	2196.11	-2311.93	3312669.63	1358602.42	40.3123379	-104.3787700	0.00	
7623.00†	90.000	271.288	6386.00	3000.11	2198.35	-2411.91	3312569.64	1358603.39	40.3123440	-104.3791285	0.00	
7723.00†	90.000	271.288	6386.00	3095.28	2200.60	-2511.88	3312469.65	1358604.37	40.3123502	-104.3794869	0.00	
7823.00†	90.000	271.288	6386.00	3190.44	2202.85	-2611.86	3312369.66	1358605.34	40.3123563	-104.3798454	0.00	
7923.00†	90.000	271.288	6386.00	3285.61	2205.10	-2711.83	3312269.67	1358606.32	40.3123625	-104.3802039	0.00	
8023.00†	90.000	271.288	6386.00	3380.78	2207.35	-2811.81	3312169.68	1358607.29	40.3123686	-104.3805624	0.00	
8123.00†	90.000	271.288	6386.00	3475.95	2209.59	-2911.78	3312069.69	1358608.26	40.3123747	-104.3809209	0.00	
8223.00†	90.000	271.288	6386.00	3571.11	2211.84	-3011.76	3311969.70	1358609.24	40.3123809	-104.3812794	0.00	
8323.00†	90.000	271.288	6386.00	3666.28	2214.09	-3111.73	3311869.71	1358610.21	40.3123870	-104.3816378	0.00	
8423.00†	90.000	271.288	6386.00	3761.45	2216.34	-3211.71	3311769.72	1358611.19	40.3123931	-104.3819963	0.00	

Planned Wellpath Report

Flaherty 13-8-3 PWP Rev-A.0

Page 5 of 8

REFERENCE WELLPATH IDENTIFICATION

Operator	CONFLUENCE RESOURCES	Well	Flaherty 13-8-3
Field	WELD COUNTY (NAD83, TRUE NORTH)	API	0512347439
Facility	SEC.18-T04N-R62W	Wellbore	Flaherty 13-8-3 PWB
Slot	SLOT#18 Flaherty 13-8-3 (413'FSL & 1693'FWL,SEC.18)		

WELLPATH DATA (124 stations) † = interpolated, ‡ = extrapolated station

MD [ft]	Inclination [°]	Azimuth [°]	TVD [ft]	Vert Sect [ft]	North [ft]	East [ft]	Grid East [US ft]	Grid North [US ft]	Latitude	Longitude	DLS [°/100ft]	Comments
8523.00†	90.000	271.288	6386.00	3856.62	2218.59	-3311.68	3311669.73	1358612.16	40.3123993	-104.3823548	0.00	
8623.00†	90.000	271.288	6386.00	3951.78	2220.83	-3411.65	3311569.73	1358613.14	40.3124054	-104.3827133	0.00	
8723.00†	90.000	271.288	6386.00	4046.95	2223.08	-3511.63	3311469.74	1358614.11	40.3124115	-104.3830718	0.00	
8823.00†	90.000	271.288	6386.00	4142.12	2225.33	-3611.60	3311369.75	1358615.08	40.3124177	-104.3834303	0.00	
8923.00†	90.000	271.288	6386.00	4237.29	2227.58	-3711.58	3311269.76	1358616.06	40.3124238	-104.3837888	0.00	
9023.00†	90.000	271.288	6386.00	4332.46	2229.83	-3811.55	3311169.77	1358617.03	40.3124299	-104.3841472	0.00	
9123.00†	90.000	271.288	6386.00	4427.62	2232.07	-3911.53	3311069.78	1358618.01	40.3124361	-104.3845057	0.00	
9223.00†	90.000	271.288	6386.00	4522.79	2234.32	-4011.50	3310969.79	1358618.98	40.3124422	-104.3848642	0.00	
9323.00†	90.000	271.288	6386.00	4617.96	2236.57	-4111.48	3310869.80	1358619.96	40.3124483	-104.3852227	0.00	
9423.00†	90.000	271.288	6386.00	4713.13	2238.82	-4211.45	3310769.81	1358620.93	40.3124544	-104.3855812	0.00	
9523.00†	90.000	271.288	6386.00	4808.29	2241.07	-4311.43	3310669.82	1358621.91	40.3124606	-104.3859397	0.00	
9623.00†	90.000	271.288	6386.00	4903.46	2243.31	-4411.40	3310569.83	1358622.88	40.3124667	-104.3862981	0.00	
9723.00†	90.000	271.288	6386.00	4998.63	2245.56	-4511.38	3310469.84	1358623.85	40.3124728	-104.3866566	0.00	
9823.00†	90.000	271.288	6386.00	5093.80	2247.81	-4611.35	3310369.85	1358624.83	40.3124789	-104.3870151	0.00	
9923.00†	90.000	271.288	6386.00	5188.96	2250.06	-4711.33	3310269.85	1358625.80	40.3124851	-104.3873736	0.00	
10023.00†	90.000	271.288	6386.00	5284.13	2252.31	-4811.30	3310169.86	1358626.78	40.3124912	-104.3877321	0.00	
10123.00†	90.000	271.288	6386.00	5379.30	2254.56	-4911.28	3310069.87	1358627.75	40.3124973	-104.3880906	0.00	
10223.00†	90.000	271.288	6386.00	5474.47	2256.80	-5011.25	3309969.88	1358628.73	40.3125034	-104.3884491	0.00	
10323.00†	90.000	271.288	6386.00	5569.63	2259.05	-5111.23	3309869.89	1358629.70	40.3125095	-104.3888075	0.00	
10423.00†	90.000	271.288	6386.00	5664.80	2261.30	-5211.20	3309769.90	1358630.68	40.3125156	-104.3891660	0.00	
10523.00†	90.000	271.288	6386.00	5759.97	2263.55	-5311.17	3309669.91	1358631.65	40.3125217	-104.3895245	0.00	
10623.00†	90.000	271.288	6386.00	5855.14	2265.80	-5411.15	3309569.92	1358632.62	40.3125279	-104.3898830	0.00	
10723.00†	90.000	271.288	6386.00	5950.30	2268.04	-5511.12	3309469.93	1358633.60	40.3125340	-104.3902415	0.00	
10823.00†	90.000	271.288	6386.00	6045.47	2270.29	-5611.10	3309369.94	1358634.57	40.3125401	-104.3906000	0.00	
10923.00†	90.000	271.288	6386.00	6140.64	2272.54	-5711.07	3309269.95	1358635.55	40.3125462	-104.3909585	0.00	
11023.00†	90.000	271.288	6386.00	6235.81	2274.79	-5811.05	3309169.96	1358636.52	40.3125523	-104.3913169	0.00	
11123.00†	90.000	271.288	6386.00	6330.97	2277.04	-5911.02	3309069.97	1358637.50	40.3125584	-104.3916754	0.00	
11223.00†	90.000	271.288	6386.00	6426.14	2279.28	-6011.00	3308969.97	1358638.47	40.3125645	-104.3920339	0.00	
11323.00†	90.000	271.288	6386.00	6521.31	2281.53	-6110.97	3308869.98	1358639.45	40.3125706	-104.3923924	0.00	
11423.00†	90.000	271.288	6386.00	6616.48	2283.78	-6210.95	3308769.99	1358640.42	40.3125767	-104.3927509	0.00	

Planned Wellpath Report

Flaherty 13-8-3 PWP Rev-A.0

Page 6 of 8

REFERENCE WELLPATH IDENTIFICATION

Operator	CONFLUENCE RESOURCES	Well	Flaherty 13-8-3
Field	WELD COUNTY (NAD83, TRUE NORTH)	API	0512347439
Facility	SEC.18-T04N-R62W	Wellbore	Flaherty 13-8-3 PWB
Slot	SLOT#18 Flaherty 13-8-3 (413'FSL & 1693'FWL,SEC.18)		

WELLPATH DATA (124 stations) † = interpolated, ‡ = extrapolated station

MD [ft]	Inclination [°]	Azimuth [°]	TVD [ft]	Vert Sect [ft]	North [ft]	East [ft]	Grid East [US ft]	Grid North [US ft]	Latitude	Longitude	DLS [°/100ft]	Comments
11523.00†	90.000	271.288	6386.00	6711.64	2286.03	-6310.92	3308670.00	1358641.39	40.3125828	-104.3931094	0.00	
11623.00†	90.000	271.288	6386.00	6806.81	2288.28	-6410.90	3308570.01	1358642.37	40.3125889	-104.3934679	0.00	
11723.00†	90.000	271.288	6386.00	6901.98	2290.52	-6510.87	3308470.02	1358643.34	40.3125950	-104.3938263	0.00	
11804.92	90.000	271.288	6386.00 [‡]	6979.94	2292.37	-6592.77	3308388.11	1358644.14	40.3126000	-104.3941200	0.00	TD

HOLE & CASING SECTIONS - Ref Wellbore: Flaherty 13-8-3 PWB Ref Wellpath: Flaherty 13-8-3 PWP Rev-A.0

String/Diameter	Start MD [ft]	End MD [ft]	Interval [ft]	Start TVD [ft]	End TVD [ft]	Start N/S [ft]	Start E/W [ft]	End N/S [ft]	End E/W [ft]
9.625in Casing Surface	23.00	1683.37	1660.37	23.00	1650.00	0.00	0.00	189.37	-148.98

REFERENCE WELLPATH IDENTIFICATION

Operator	CONFLUENCE RESOURCES	Well	Flaherty 13-8-3
Field	WELD COUNTY (NAD83, TRUE NORTH)	API	0512347439
Facility	SEC.18-T04N-R62W	Wellbore	Flaherty 13-8-3 PWB
Slot	SLOT#18 Flaherty 13-8-3 (413'FSL & 1693'FWL,SEC.18)		

TARGETS

Name	MD [ft]	TVD [ft]	North [ft]	East [ft]	Grid East [US ft]	Grid North [US ft]	Latitude	Longitude	Shape
SEC.13-T04N-R63W	N/A	0.00	-207.65	-27.89	3314984.00	1356228.05	40.3057400	-104.3705800	polygon
2D Polygon: dimensions not calculated									
SEC.13-T04N-R63W (SB 470')	N/A	0.00	-207.65	-27.89	3314984.00	1356228.05	40.3057400	-104.3705800	polygon
2D Polygon: dimensions not calculated									
2) Flaherty 13-8-3 BHL REV-1 (2577'FSL & 470'FWL,SEC.13)	11804.92	6386.00	2292.37	-6592.77	3308388.11	1358644.14	40.3126000	-104.3941200	point
1) Flaherty 13-8-3 LP REV-1 (2577'FSL & 470'FEL,SEC.13)	7394.69	6386.00	2193.22	-2183.65	3312797.93	1358601.17	40.3123300	-104.3783100	point

SURVEY PROGRAM - Ref Wellbore: Flaherty 13-8-3 PWB Ref Wellpath: Flaherty 13-8-3 PWP Rev-A.0

Start MD [ft]	End MD [ft]	Positional Uncertainty Model	Log Name/Comment	Wellbore
23.00	1683.37	BH NaviTrak (2019) (Axial)		Flaherty 13-8-3 PWB
1683.37	11804.92	BH AutoTrak Curve/eXpress (2019) (Short spacing)		Flaherty 13-8-3 PWB

Planned Wellpath Report

Flaherty 13-8-3 PWP Rev-A.0

Page 8 of 8

REFERENCE WELLPATH IDENTIFICATION

Operator	CONFLUENCE RESOURCES	Well	Flaherty 13-8-3
Field	WELD COUNTY (NAD83, TRUE NORTH)	API	0512347439
Facility	SEC.18-T04N-R62W	Wellbore	Flaherty 13-8-3 PWB
Slot	SLOT#18 Flaherty 13-8-3 (413'FSL & 1693'FWL,SEC.18)		

DESIGN COMMENTS

MD [ft]	Inclination [°]	Azimuth [°]	TVD [ft]	Comment
23.00	0.000	321.807	23.00	Tie On
500.00	0.000	321.807	500.00	End of Tangent
1913.46	28.269	321.807	1856.80	Build (XS)
6589.42	28.269	321.807	5975.08	KOP
7394.69	90.000	271.288	6386.00	LANDING
11804.92	90.000	271.288	6386.00	TD