

CONFLUENCE RESOURCES



Location:	COLORADO	Slot:	SLOT#14 Flaherty 13-5-4 (334°FSL & 1754°FWL,SEC.18)
Field:	WELD COUNTY (NAD83, TRUE NORTH)	Well:	Flaherty 13-5-4
Facility:	SEC.18-T04N-R62W	Wellbore:	Flaherty 13-5-4 PWB
Plot reference wellpath is Flaherty 13-5-4 PWP Rev-A.0		Grid System: NAD83 / Lambert Colorado SP, Northern Zone (501), US feet	
True vertical depths are referenced to Rig (23) (KB)		North Reference: True north	
Reference wellpath measured depths are referenced to Rig (23) (KB)		Scale: True distance	
Rig (23) (KB) to Mean Sea Level: 4586 feet		Coordinates are in feet referenced to Slot	
Mean Sea Level to Mud line (At Slot: SLOT#14 Flaherty 13-5-4 (334°FSL & 1754°FWL,SEC.18)): 0 feet		Depths are in feet	
Offset wellpath MDs are referenced to each path's default MD datum		Created by: painseir on 2021-12-02; Database: WellArchitectDB	

Location Information

Facility Name		Grid East (US ft)	Grid North (US ft)	Latitude	Longitude
SEC.18-T04N-R62W		3314967.040	1356246.051	40.3057900°	-104.3706400°
Slot	Local N (ft)	Local E (ft)	Grid East (US ft)	Grid North (US ft)	Latitude
SLOT#14 Flaherty 13-5-4 (334°FSL & 1754°FWL,SEC.18)	109.29	105.99	3315071.620	1356356.679	40.3060900°
Rig (23) (KB) to Mud line (At Slot: SLOT#14 Flaherty 13-5-4 (334°FSL & 1754°FWL,SEC.18))	4586ft				
Mean Sea Level to Mud line (At Slot: SLOT#14 Flaherty 13-5-4 (334°FSL & 1754°FWL,SEC.18))	0ft				
Rig (23) (KB) to Mean Sea Level	4586ft				

Hole and Casing Sections

Name	Start MD (ft)	End MD (ft)	Interval (ft)	Start TVD (ft)	End TVD (ft)	Start Local N (ft)	Start Local E (ft)	End Local N (ft)	End Local E (ft)	Wellbore
9.625in Casing Surface	23.00	1680.06	1657.06	23.00	1650.00	0.00	0.00	87.22	-214.52	Flaherty 13-5-4 PWB

Survey Program

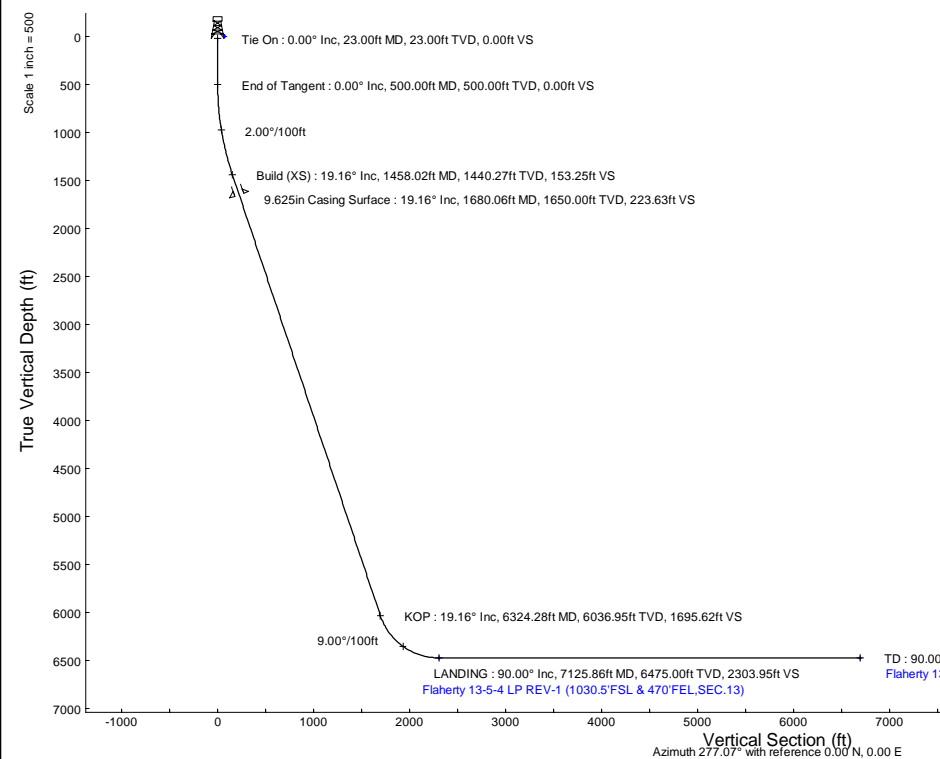
Start MD (ft)	End MD (ft)	Tool	Model	Log Name/Comment	Wellbore
23.00	1680.06	BH Navitrak (2019)	BH Navitrak (2019) (Axial)		Flaherty 13-5-4 PWB
1680.06	11539.08	BH AutoTrak Curve/xpress (2019)	BH AutoTrak Curve/xpress (2019) (Short spacing)		Flaherty 13-5-4 PWB

Bottom Hole Location

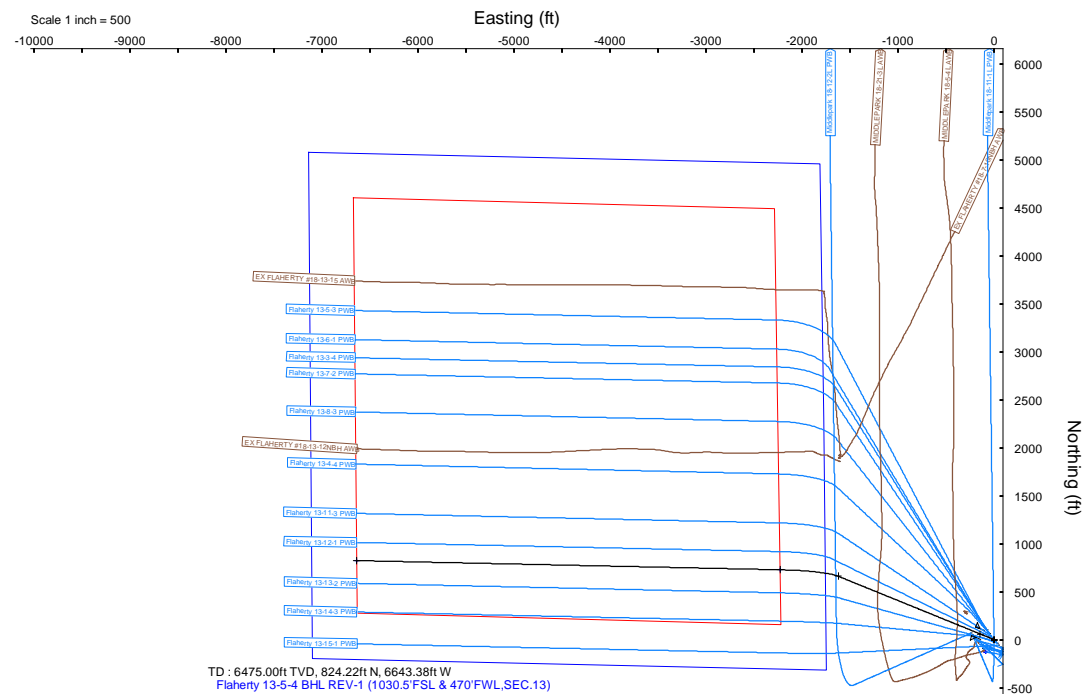
MD (ft)	Inc (°)	Az (°)	TVD (ft)	Local N (ft)	Local E (ft)	Grid East (US ft)	Grid North (US ft)	Latitude	Longitude
11539.08	90.000	271.240	6475.00	824.22	-6643.38	3308418.57	1357096.17	40.3083500°	-104.3940800°

Targets

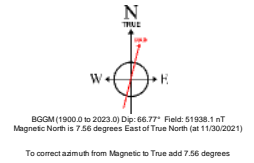
Name	MD (ft)	TVD (ft)	Local N (ft)	Local E (ft)	Grid East (US ft)	Grid North (US ft)	Latitude	Longitude
SEC.13-T04N-R63W	N/A	0.00	-127.51	-89.25	3314984.00	1356226.05	40.3057400°	-104.3705800°
SEC.13-T04N-R63W (SB 470)	N/A	0.00	-127.51	-89.25	3314984.00	1356226.05	40.3057400°	-104.3705800°
Flaherty 13-5-4 BHL REV-1 (1030.5°FSL & 470°FWL,SEC.13)	11539.08	6475.00	824.22	-6643.38	3308418.57	1357096.17	40.3083500°	-104.3940800°
Flaherty 13-5-4 LP REV-1 (1030.5°FSL & 470°FEL,SEC.13)	7125.86	6475.00	728.71	-2231.20	3312831.41	1357056.88	40.3080900°	-104.3782600°



Well Profile Data								
Design Comment	MD (ft)	Inc (°)	Az (°)	TVD (ft)	Local N (ft)	Local E (ft)	DLS (°/100ft)	VS (ft)
Tie On	23.00	0.000	292.126	23.00	0.00	0.00	0.00	0.00
End of Tangent	500.00	0.000	292.126	500.00	0.00	0.00	0.00	0.00
Build (XS)	1458.02	19.160	292.126	1440.27	59.77	-147.01	2.00	153.25
KOP	6324.28	19.160	292.126	6036.95	661.35	-1626.57	0.00	1695.62
LANDING	7125.86	90.000	271.240	6475.00	728.71	-2231.20	9.00	2303.95
TD	11539.08	90.000	271.240	6475.00	824.22	-6643.38	0.00	6694.32



Flaherty 13-5-4 LP REV-1 (1030.5°FSL & 470°FEL,SEC.13)
LANDING : 6475.00ft TVD, 728.71ft N, 2231.20ft W
KOP : 6036.95ft TVD, 661.35ft N, 1626.57ft W
9.625in Casing Surface : 1650.00ft TVD, 87.22ft N, 214.52ft W
Tie On : 23.00ft TVD, 0.00ft N, 0.00ft E
SLOT#14 Flaherty 13-5-4 (334°FSL & 1754°FWL,SEC.18)



Planned Wellpath Report

Flaherty 13-5-4 PWP Rev-A.0

Page 1 of 8

REFERENCE WELLPATH IDENTIFICATION

Operator	CONFLUENCE RESOURCES	Well	Flaherty 13-5-4
Field	WELD COUNTY (NAD83, TRUE NORTH)	API	0512347458
Facility	SEC.18-T04N-R62W	Wellbore	Flaherty 13-5-4 PWB
Slot	SLOT#14 Flaherty 13-5-4 (334'FSL & 1754'FWL,SEC.18)		

REPORT SETUP INFORMATION

Projection System	NAD83 / Lambert Colorado SP, Northern Zone (501), US feet	Software System	WellArchitect® 6.0
North Reference	True	User	Painsetr
Scale	0.999957	Report Generated	12/2/2021 at 12:06:14 PM
Convergence at slot	0.73° East	Database	WellArchitectDB

WELLPATH LOCATION

	Local coordinates		Grid coordinates		Geographic coordinates	
	North[ft]	East[ft]	Easting[US ft]	Northing[US ft]	Latitude	Longitude
Slot Location	109.29	105.99	3315071.62	1356356.68	40.3060900°	-104.3702600°
Facility Reference Pt			3314967.04	1356246.05	40.3057900°	-104.3706400°
Field Reference Pt			3230456.90	1245096.09	40.0032400°	-104.6773400°

WELLPATH DATUM

Calculation method	Minimum curvature	Rig (23') (KB) to Facility Vertical Datum	4586.00ft
Horizontal Reference Pt	Slot	Rig (23') (KB) to Mean Sea Level	4586.00ft
Vertical Reference Pt	Rig (23') (KB)	Rig (23') (KB) to Mud Line at Slot (SLOT#14 Flaherty 13-5-4 (334'FSL & 1754'FWL,SEC.18))	4586.00ft
MD Reference Pt	Rig (23') (KB)	Section Origin	N 0.00, E 0.00 ft
Field Vertical Reference	Mean Sea Level	Section Azimuth	277.07°

Planned Wellpath Report

Flaherty 13-5-4 PWP Rev-A.0

Page 2 of 8

REFERENCE WELLPATH IDENTIFICATION

Operator	CONFLUENCE RESOURCES	Well	Flaherty 13-5-4
Field	WELD COUNTY (NAD83, TRUE NORTH)	API	0512347458
Facility	SEC.18-T04N-R62W	Wellbore	Flaherty 13-5-4 PWB
Slot	SLOT#14 Flaherty 13-5-4 (334'FSL & 1754'FWL,SEC.18)		

WELLPATH DATA (122 stations) † = interpolated, ‡ = extrapolated station

MD [ft]	Inclination [°]	Azimuth [°]	TVD [ft]	Vert Sect [ft]	North [ft]	East [ft]	Grid East [US ft]	Grid North [US ft]	Latitude	Longitude	DLS [°/100ft]	Comments
0.00†	0.000	292.126	0.00	0.00	0.00	0.00	3315071.62	1356356.68	40.3060900	-104.3702600	0.00	
23.00	0.000	292.126	23.00	0.00	0.00	0.00	3315071.62	1356356.68	40.3060900	-104.3702600	0.00	Tie On
123.00†	0.000	292.126	123.00	0.00	0.00	0.00	3315071.62	1356356.68	40.3060900	-104.3702600	0.00	
223.00†	0.000	292.126	223.00	0.00	0.00	0.00	3315071.62	1356356.68	40.3060900	-104.3702600	0.00	
323.00†	0.000	292.126	323.00	0.00	0.00	0.00	3315071.62	1356356.68	40.3060900	-104.3702600	0.00	
423.00†	0.000	292.126	423.00	0.00	0.00	0.00	3315071.62	1356356.68	40.3060900	-104.3702600	0.00	
500.00	0.000	292.126	500.00	0.00	0.00	0.00	3315071.62	1356356.68	40.3060900	-104.3702600	0.00	End of Tangent
523.00†	0.460	292.126	523.00	0.09	0.03	-0.09	3315071.53	1356356.71	40.3060901	-104.3702603	2.00	
623.00†	2.460	292.126	622.96	2.55	0.99	-2.45	3315069.16	1356357.64	40.3060927	-104.3702688	2.00	
723.00†	4.460	292.126	722.77	8.38	3.27	-8.04	3315063.54	1356359.84	40.3060990	-104.3702888	2.00	
823.00†	6.460	292.126	822.32	17.57	6.85	-16.85	3315054.68	1356363.31	40.3061088	-104.3703204	2.00	
923.00†	8.460	292.126	921.46	30.10	11.74	-28.88	3315042.60	1356368.05	40.3061222	-104.3703635	2.00	
1023.00†	10.460	292.126	1020.10	45.97	17.93	-44.10	3315027.30	1356374.05	40.3061392	-104.3704181	2.00	
1123.00†	12.460	292.126	1118.10	65.16	25.41	-62.51	3315008.80	1356381.29	40.3061598	-104.3704841	2.00	
1223.00†	14.460	292.126	1215.35	87.64	34.18	-84.07	3314987.13	1356389.78	40.3061838	-104.3705614	2.00	
1323.00†	16.460	292.126	1311.73	113.38	44.22	-108.76	3314962.31	1356399.51	40.3062114	-104.3706499	2.00	
1423.00†	18.460	292.126	1407.11	142.35	55.52	-136.55	3314934.38	1356410.45	40.3062424	-104.3707496	2.00	
1458.02	19.160	292.126	1440.27	153.25	59.77	-147.01	3314923.86	1356414.57	40.3062541	-104.3707871	2.00	Build (XS)
1523.00†	19.160	292.126	1501.64	173.85	67.81	-166.77	3314904.01	1356422.35	40.3062761	-104.3708579	0.00	
1623.00†	19.160	292.126	1596.10	205.54	80.17	-197.17	3314873.45	1356434.33	40.3063101	-104.3709669	0.00	
1723.00†	19.160	292.126	1690.56	237.24	92.53	-227.58	3314842.89	1356446.30	40.3063440	-104.3710760	0.00	
1823.00†	19.160	292.126	1785.02	268.93	104.89	-257.98	3314812.33	1356458.27	40.3063779	-104.3711850	0.00	
1923.00†	19.160	292.126	1879.48	300.63	117.26	-288.39	3314781.78	1356470.25	40.3064119	-104.3712940	0.00	
2023.00†	19.160	292.126	1973.95	332.32	129.62	-318.79	3314751.22	1356482.22	40.3064458	-104.3714030	0.00	
2123.00†	19.160	292.126	2068.41	364.02	141.98	-349.20	3314720.66	1356494.19	40.3064797	-104.3715120	0.00	
2223.00†	19.160	292.126	2162.87	395.71	154.34	-379.60	3314690.10	1356506.17	40.3065137	-104.3716210	0.00	
2323.00†	19.160	292.126	2257.33	427.41	166.70	-410.00	3314659.54	1356518.14	40.3065476	-104.3717300	0.00	
2423.00†	19.160	292.126	2351.79	459.11	179.07	-440.41	3314628.99	1356530.11	40.3065815	-104.3718391	0.00	
2523.00†	19.160	292.126	2446.25	490.80	191.43	-470.81	3314598.43	1356542.09	40.3066154	-104.3719481	0.00	
2623.00†	19.160	292.126	2540.71	522.50	203.79	-501.22	3314567.87	1356554.06	40.3066494	-104.3720571	0.00	

Planned Wellpath Report

Flaherty 13-5-4 PWP Rev-A.0

Page 3 of 8

REFERENCE WELLPATH IDENTIFICATION

Operator	CONFLUENCE RESOURCES	Well	Flaherty 13-5-4
Field	WELD COUNTY (NAD83, TRUE NORTH)	API	0512347458
Facility	SEC.18-T04N-R62W	Wellbore	Flaherty 13-5-4 PWB
Slot	SLOT#14 Flaherty 13-5-4 (334'FSL & 1754'FWL,SEC.18)		

WELLPATH DATA (122 stations) † = interpolated, ‡ = extrapolated station

MD [ft]	Inclination [°]	Azimuth [°]	TVD [ft]	Vert Sect [ft]	North [ft]	East [ft]	Grid East [US ft]	Grid North [US ft]	Latitude	Longitude	DLS [°/100ft]	Comments
2723.00†	19.160	292.126	2635.17	554.19	216.15	-531.62	3314537.31	1356566.03	40.3066833	-104.3721661	0.00	
2823.00†	19.160	292.126	2729.63	585.89	228.51	-562.03	3314506.75	1356578.01	40.3067172	-104.3722751	0.00	
2923.00†	19.160	292.126	2824.09	617.58	240.88	-592.43	3314476.19	1356589.98	40.3067512	-104.3723841	0.00	
3023.00†	19.160	292.126	2918.55	649.28	253.24	-622.84	3314445.64	1356601.95	40.3067851	-104.3724931	0.00	
3123.00†	19.160	292.126	3013.01	680.97	265.60	-653.24	3314415.08	1356613.93	40.3068190	-104.3726022	0.00	
3223.00†	19.160	292.126	3107.47	712.67	277.96	-683.64	3314384.52	1356625.90	40.3068530	-104.3727112	0.00	
3323.00†	19.160	292.126	3201.93	744.36	290.33	-714.05	3314353.96	1356637.87	40.3068869	-104.3728202	0.00	
3423.00†	19.160	292.126	3296.39	776.06	302.69	-744.45	3314323.40	1356649.84	40.3069208	-104.3729292	0.00	
3523.00†	19.160	292.126	3390.85	807.75	315.05	-774.86	3314292.85	1356661.82	40.3069548	-104.3730382	0.00	
3623.00†	19.160	292.126	3485.31	839.45	327.41	-805.26	3314262.29	1356673.79	40.3069887	-104.3731472	0.00	
3723.00†	19.160	292.126	3579.77	871.14	339.77	-835.67	3314231.73	1356685.76	40.3070226	-104.3732562	0.00	
3823.00†	19.160	292.126	3674.23	902.84	352.14	-866.07	3314201.17	1356697.74	40.3070566	-104.3733653	0.00	
3923.00†	19.160	292.126	3768.69	934.53	364.50	-896.48	3314170.61	1356709.71	40.3070905	-104.3734743	0.00	
4023.00†	19.160	292.126	3863.15	966.23	376.86	-926.88	3314140.06	1356721.68	40.3071244	-104.3735833	0.00	
4123.00†	19.160	292.126	3957.61	997.92	389.22	-957.28	3314109.50	1356733.66	40.3071583	-104.3736923	0.00	
4223.00†	19.160	292.126	4052.07	1029.62	401.58	-987.69	3314078.94	1356745.63	40.3071923	-104.3738013	0.00	
4323.00†	19.160	292.126	4146.53	1061.31	413.95	-1018.09	3314048.38	1356757.60	40.3072262	-104.3739103	0.00	
4423.00†	19.160	292.126	4240.99	1093.01	426.31	-1048.50	3314017.82	1356769.58	40.3072601	-104.3740194	0.00	
4523.00†	19.160	292.126	4335.45	1124.70	438.67	-1078.90	3313987.27	1356781.55	40.3072941	-104.3741284	0.00	
4623.00†	19.160	292.126	4429.91	1156.40	451.03	-1109.31	3313956.71	1356793.52	40.3073280	-104.3742374	0.00	
4723.00†	19.160	292.126	4524.37	1188.09	463.40	-1139.71	3313926.15	1356805.50	40.3073619	-104.3743464	0.00	
4823.00†	19.160	292.126	4618.83	1219.79	475.76	-1170.11	3313895.59	1356817.47	40.3073959	-104.3744554	0.00	
4923.00†	19.160	292.126	4713.29	1251.48	488.12	-1200.52	3313865.03	1356829.44	40.3074298	-104.3745644	0.00	
5023.00†	19.160	292.126	4807.75	1283.18	500.48	-1230.92	3313834.48	1356841.42	40.3074637	-104.3746734	0.00	
5123.00†	19.160	292.126	4902.21	1314.87	512.84	-1261.33	3313803.92	1356853.39	40.3074976	-104.3747825	0.00	
5223.00†	19.160	292.126	4996.67	1346.57	525.21	-1291.73	3313773.36	1356865.36	40.3075316	-104.3748915	0.00	
5323.00†	19.160	292.126	5091.14	1378.26	537.57	-1322.14	3313742.80	1356877.34	40.3075655	-104.3750005	0.00	
5423.00†	19.160	292.126	5185.60	1409.96	549.93	-1352.54	3313712.24	1356889.31	40.3075994	-104.3751095	0.00	
5523.00†	19.160	292.126	5280.06	1441.65	562.29	-1382.95	3313681.68	1356901.28	40.3076334	-104.3752185	0.00	
5623.00†	19.160	292.126	5374.52	1473.35	574.65	-1413.35	3313651.13	1356913.26	40.3076673	-104.3753275	0.00	

Planned Wellpath Report

Flaherty 13-5-4 PWP Rev-A.0

Page 4 of 8

REFERENCE WELLPATH IDENTIFICATION

Operator	CONFLUENCE RESOURCES	Well	Flaherty 13-5-4
Field	WELD COUNTY (NAD83, TRUE NORTH)	API	0512347458
Facility	SEC.18-T04N-R62W	Wellbore	Flaherty 13-5-4 PWB
Slot	SLOT#14 Flaherty 13-5-4 (334'FSL & 1754'FWL,SEC.18)		

WELLPATH DATA (122 stations) † = interpolated, ‡ = extrapolated station

MD [ft]	Inclination [°]	Azimuth [°]	TVD [ft]	Vert Sect [ft]	North [ft]	East [ft]	Grid East [US ft]	Grid North [US ft]	Latitude	Longitude	DLS [°/100ft]	Comments
5723.00†	19.160	292.126	5468.98	1505.05	587.02	-1443.75	3313620.57	1356925.23	40.3077012	-104.3754366	0.00	
5823.00†	19.160	292.126	5563.44	1536.74	599.38	-1474.16	3313590.01	1356937.20	40.3077351	-104.3755456	0.00	
5923.00†	19.160	292.126	5657.90	1568.44	611.74	-1504.56	3313559.45	1356949.18	40.3077691	-104.3756546	0.00	
6023.00†	19.160	292.126	5752.36	1600.13	624.10	-1534.97	3313528.89	1356961.15	40.3078030	-104.3757636	0.00	
6123.00†	19.160	292.126	5846.82	1631.83	636.47	-1565.37	3313498.34	1356973.12	40.3078369	-104.3758726	0.00	
6223.00†	19.160	292.126	5941.28	1663.52	648.83	-1595.78	3313467.78	1356985.10	40.3078709	-104.3759817	0.00	
6323.00†	19.160	292.126	6035.74	1695.22	661.19	-1626.18	3313437.22	1356997.07	40.3079048	-104.3760907	0.00	
6324.28	19.160	292.126	6036.95	1695.62	661.35	-1626.57	3313436.83	1356997.22	40.3079052	-104.3760921	0.00	KOP
6423.00†	27.592	284.951	6127.50	1733.99	673.37	-1663.74	3313399.51	1357008.77	40.3079382	-104.3762253	9.00	
6523.00†	36.342	280.934	6212.26	1786.60	684.99	-1715.31	3313347.80	1357019.73	40.3079701	-104.3764103	9.00	
6623.00†	45.179	278.311	6287.94	1851.76	695.76	-1779.63	3313283.35	1357029.68	40.3079996	-104.3766409	9.00	
6723.00†	54.060	276.392	6352.66	1927.85	705.41	-1855.11	3313207.76	1357038.37	40.3080261	-104.3769115	9.00	
6823.00†	62.966	274.864	6404.84	2013.01	713.71	-1939.89	3313122.88	1357045.59	40.3080489	-104.3772155	9.00	
6923.00†	71.886	273.563	6443.19	2105.13	720.46	-2031.89	3313030.81	1357051.16	40.3080674	-104.3775453	9.00	
7023.00†	80.813	272.388	6466.77	2201.96	725.48	-2128.83	3312933.81	1357054.95	40.3080811	-104.3778929	9.00	
7123.00†	89.744	271.272	6474.99	2301.10	728.65	-2228.34	3312834.28	1357056.85	40.3080898	-104.3782497	9.00	
7125.86	90.000	271.240	6475.00 [†]	2303.95	728.71	-2231.20	3312831.41	1357056.88	40.3080900	-104.3782600	9.00	LANDING
7223.00†	90.000	271.240	6475.00	2400.58	730.82	-2328.32	3312734.29	1357057.74	40.3080957	-104.3786082	0.00	
7323.00†	90.000	271.240	6475.00	2500.06	732.98	-2428.29	3312634.30	1357058.63	40.3081017	-104.3789667	0.00	
7423.00†	90.000	271.240	6475.00	2599.55	735.14	-2528.27	3312534.30	1357059.52	40.3081076	-104.3793251	0.00	
7523.00†	90.000	271.240	6475.00	2699.03	737.31	-2628.25	3312434.31	1357060.41	40.3081135	-104.3796836	0.00	
7623.00†	90.000	271.240	6475.00	2798.51	739.47	-2728.22	3312334.32	1357061.30	40.3081194	-104.3800421	0.00	
7723.00†	90.000	271.240	6475.00	2897.99	741.64	-2828.20	3312234.33	1357062.19	40.3081253	-104.3804005	0.00	
7823.00†	90.000	271.240	6475.00	2997.48	743.80	-2928.18	3312134.34	1357063.08	40.3081312	-104.3807590	0.00	
7923.00†	90.000	271.240	6475.00	3096.96	745.96	-3028.15	3312034.35	1357063.97	40.3081371	-104.3811175	0.00	
8023.00†	90.000	271.240	6475.00	3196.44	748.13	-3128.13	3311934.35	1357064.86	40.3081430	-104.3814759	0.00	
8123.00†	90.000	271.240	6475.00	3295.92	750.29	-3228.11	3311834.36	1357065.75	40.3081489	-104.3818344	0.00	
8223.00†	90.000	271.240	6475.00	3395.40	752.46	-3328.08	3311734.37	1357066.64	40.3081548	-104.3821929	0.00	
8323.00†	90.000	271.240	6475.00	3494.89	754.62	-3428.06	3311634.38	1357067.53	40.3081607	-104.3825513	0.00	
8423.00†	90.000	271.240	6475.00	3594.37	756.79	-3528.04	3311534.39	1357068.43	40.3081666	-104.3829098	0.00	

Planned Wellpath Report

Flaherty 13-5-4 PWP Rev-A.0

Page 5 of 8

REFERENCE WELLPATH IDENTIFICATION

Operator	CONFLUENCE RESOURCES	Well	Flaherty 13-5-4
Field	WELD COUNTY (NAD83, TRUE NORTH)	API	0512347458
Facility	SEC.18-T04N-R62W	Wellbore	Flaherty 13-5-4 PWB
Slot	SLOT#14 Flaherty 13-5-4 (334'FSL & 1754'FWL,SEC.18)		

WELLPATH DATA (122 stations) † = interpolated, ‡ = extrapolated station

MD [ft]	Inclination [°]	Azimuth [°]	TVD [ft]	Vert Sect [ft]	North [ft]	East [ft]	Grid East [US ft]	Grid North [US ft]	Latitude	Longitude	DLS [°/100ft]	Comments
8523.00†	90.000	271.240	6475.00	3693.85	758.95	-3628.01	3311434.40	1357069.32	40.3081725	-104.3832683	0.00	
8623.00†	90.000	271.240	6475.00	3793.33	761.11	-3727.99	3311334.40	1357070.21	40.3081784	-104.3836268	0.00	
8723.00†	90.000	271.240	6475.00	3892.82	763.28	-3827.96	3311234.41	1357071.10	40.3081843	-104.3839852	0.00	
8823.00†	90.000	271.240	6475.00	3992.30	765.44	-3927.94	3311134.42	1357071.99	40.3081902	-104.3843437	0.00	
8923.00†	90.000	271.240	6475.00	4091.78	767.61	-4027.92	3311034.43	1357072.88	40.3081961	-104.3847022	0.00	
9023.00†	90.000	271.240	6475.00	4191.26	769.77	-4127.89	3310934.44	1357073.77	40.3082020	-104.3850606	0.00	
9123.00†	90.000	271.240	6475.00	4290.75	771.94	-4227.87	3310834.45	1357074.66	40.3082079	-104.3854191	0.00	
9223.00†	90.000	271.240	6475.00	4390.23	774.10	-4327.85	3310734.46	1357075.55	40.3082138	-104.3857776	0.00	
9323.00†	90.000	271.240	6475.00	4489.71	776.26	-4427.82	3310634.46	1357076.44	40.3082197	-104.3861360	0.00	
9423.00†	90.000	271.240	6475.00	4589.19	778.43	-4527.80	3310534.47	1357077.33	40.3082256	-104.3864945	0.00	
9523.00†	90.000	271.240	6475.00	4688.68	780.59	-4627.78	3310434.48	1357078.22	40.3082315	-104.3868530	0.00	
9623.00†	90.000	271.240	6475.00	4788.16	782.76	-4727.75	3310334.49	1357079.11	40.3082374	-104.3872114	0.00	
9723.00†	90.000	271.240	6475.00	4887.64	784.92	-4827.73	3310234.50	1357080.00	40.3082433	-104.3875699	0.00	
9823.00†	90.000	271.240	6475.00	4987.12	787.08	-4927.71	3310134.51	1357080.89	40.3082492	-104.3879284	0.00	
9923.00†	90.000	271.240	6475.00	5086.60	789.25	-5027.68	3310034.51	1357081.78	40.3082550	-104.3882869	0.00	
10023.00†	90.000	271.240	6475.00	5186.09	791.41	-5127.66	3309934.52	1357082.67	40.3082609	-104.3886453	0.00	
10123.00†	90.000	271.240	6475.00	5285.57	793.58	-5227.64	3309834.53	1357083.56	40.3082668	-104.3890038	0.00	
10223.00†	90.000	271.240	6475.00	5385.05	795.74	-5327.61	3309734.54	1357084.45	40.3082727	-104.3893623	0.00	
10323.00†	90.000	271.240	6475.00	5484.53	797.91	-5427.59	3309634.55	1357085.34	40.3082786	-104.3897207	0.00	
10423.00†	90.000	271.240	6475.00	5584.02	800.07	-5527.57	3309534.56	1357086.23	40.3082845	-104.3900792	0.00	
10523.00†	90.000	271.240	6475.00	5683.50	802.23	-5627.54	3309434.56	1357087.12	40.3082903	-104.3904377	0.00	
10623.00†	90.000	271.240	6475.00	5782.98	804.40	-5727.52	3309334.57	1357088.01	40.3082962	-104.3907961	0.00	
10723.00†	90.000	271.240	6475.00	5882.46	806.56	-5827.50	3309234.58	1357088.90	40.3083021	-104.3911546	0.00	
10823.00†	90.000	271.240	6475.00	5981.95	808.73	-5927.47	3309134.59	1357089.79	40.3083080	-104.3915131	0.00	
10923.00†	90.000	271.240	6475.00	6081.43	810.89	-6027.45	3309034.60	1357090.68	40.3083138	-104.3918715	0.00	
11023.00†	90.000	271.240	6475.00	6180.91	813.06	-6127.43	3308934.61	1357091.57	40.3083197	-104.3922300	0.00	
11123.00†	90.000	271.240	6475.00	6280.39	815.22	-6227.40	3308834.62	1357092.46	40.3083256	-104.3925885	0.00	
11223.00†	90.000	271.240	6475.00	6379.88	817.38	-6327.38	3308734.62	1357093.35	40.3083315	-104.3929470	0.00	
11323.00†	90.000	271.240	6475.00	6479.36	819.55	-6427.36	3308634.63	1357094.24	40.3083373	-104.3933054	0.00	
11423.00†	90.000	271.240	6475.00	6578.84	821.71	-6527.33	3308534.64	1357095.13	40.3083432	-104.3936639	0.00	

REFERENCE WELLPATH IDENTIFICATION

Operator	CONFLUENCE RESOURCES	Well	Flaherty 13-5-4
Field	WELD COUNTY (NAD83, TRUE NORTH)	API	0512347458
Facility	SEC.18-T04N-R62W	Wellbore	Flaherty 13-5-4 PWB
Slot	SLOT#14 Flaherty 13-5-4 (334'FSL & 1754'FWL,SEC.18)		

WELLPATH DATA (122 stations) † = interpolated, ‡ = extrapolated station

MD [ft]	Inclination [°]	Azimuth [°]	TVD [ft]	Vert Sect [ft]	North [ft]	East [ft]	Grid East [US ft]	Grid North [US ft]	Latitude	Longitude	DLS [°/100ft]	Comments
11523.00†	90.000	271.240	6475.00	6678.32	823.88	-6627.31	3308434.65	1357096.02	40.3083491	-104.3940224	0.00	
11539.08	90.000	271.240	6475.00‡	6694.32	824.22	-6643.38	3308418.57	1357096.17	40.3083500	-104.3940800	0.00	TD

HOLE & CASING SECTIONS - Ref Wellbore: Flaherty 13-5-4 PWB Ref Wellpath: Flaherty 13-5-4 PWP Rev-A.0

String/Diameter	Start MD [ft]	End MD [ft]	Interval [ft]	Start TVD [ft]	End TVD [ft]	Start N/S [ft]	Start E/W [ft]	End N/S [ft]	End E/W [ft]
9.625in Casing Surface	23.00	1680.06	1657.06	23.00	1650.00	0.00	0.00	87.22	-214.52

TARGETS

Name	MD [ft]	TVD [ft]	North [ft]	East [ft]	Grid East [US ft]	Grid North [US ft]	Latitude	Longitude	Shape
SEC.13-T04N-R63W	N/A	0.00	-127.51	-89.25	3314984.00	1356228.05	40.3057400	-104.3705800	polygon
	2D Polygon: dimensions not calculated								
SEC.13-T04N-R63W (SB 470')	N/A	0.00	-127.51	-89.25	3314984.00	1356228.05	40.3057400	-104.3705800	polygon
	2D Polygon: dimensions not calculated								
2) Flaherty 13-5-4 BHL REV-1 (1030.5'FSL & 470'FWL,SEC.13)	11539.08	6475.00	824.22	-6643.38	3308418.57	1357096.17	40.3083500	-104.3940800	point
1) Flaherty 13-5-4 LP REV-1 (1030.5'FSL & 470'FEL,SEC.13)	7125.86	6475.00	728.71	-2231.20	3312831.41	1357056.88	40.3080900	-104.3782600	point

Planned Wellpath Report

Flaherty 13-5-4 PWP Rev-A.0

Page 7 of 8

REFERENCE WELLPATH IDENTIFICATION

Operator	CONFLUENCE RESOURCES	Well	Flaherty 13-5-4
Field	WELD COUNTY (NAD83, TRUE NORTH)	API	0512347458
Facility	SEC.18-T04N-R62W	Wellbore	Flaherty 13-5-4 PWB
Slot	SLOT#14 Flaherty 13-5-4 (334'FSL & 1754'FWL,SEC.18)		

SURVEY PROGRAM - Ref Wellbore: Flaherty 13-5-4 PWB Ref Wellpath: Flaherty 13-5-4 PWP Rev-A.0

Start MD [ft]	End MD [ft]	Positional Uncertainty Model	Log Name/Comment	Wellbore
23.00	1680.06	BH NaviTrak (2019) (Axial)		Flaherty 13-5-4 PWB
1680.06	11539.08	BH AutoTrak Curve/eXpress (2019) (Short spacing)		Flaherty 13-5-4 PWB

Planned Wellpath Report

Flaherty 13-5-4 PWP Rev-A.0

Page 8 of 8

REFERENCE WELLPATH IDENTIFICATION

Operator	CONFLUENCE RESOURCES	Well	Flaherty 13-5-4
Field	WELD COUNTY (NAD83, TRUE NORTH)	API	0512347458
Facility	SEC.18-T04N-R62W	Wellbore	Flaherty 13-5-4 PWB
Slot	SLOT#14 Flaherty 13-5-4 (334'FSL & 1754'FWL,SEC.18)		

DESIGN COMMENTS

MD [ft]	Inclination [°]	Azimuth [°]	TVD [ft]	Comment
23.00	0.000	292.126	23.00	Tie On
500.00	0.000	292.126	500.00	End of Tangent
1458.02	19.160	292.126	1440.27	Build (XS)
6324.28	19.160	292.126	6036.95	KOP
7125.86	90.000	271.240	6475.00	LANDING
11539.08	90.000	271.240	6475.00	TD