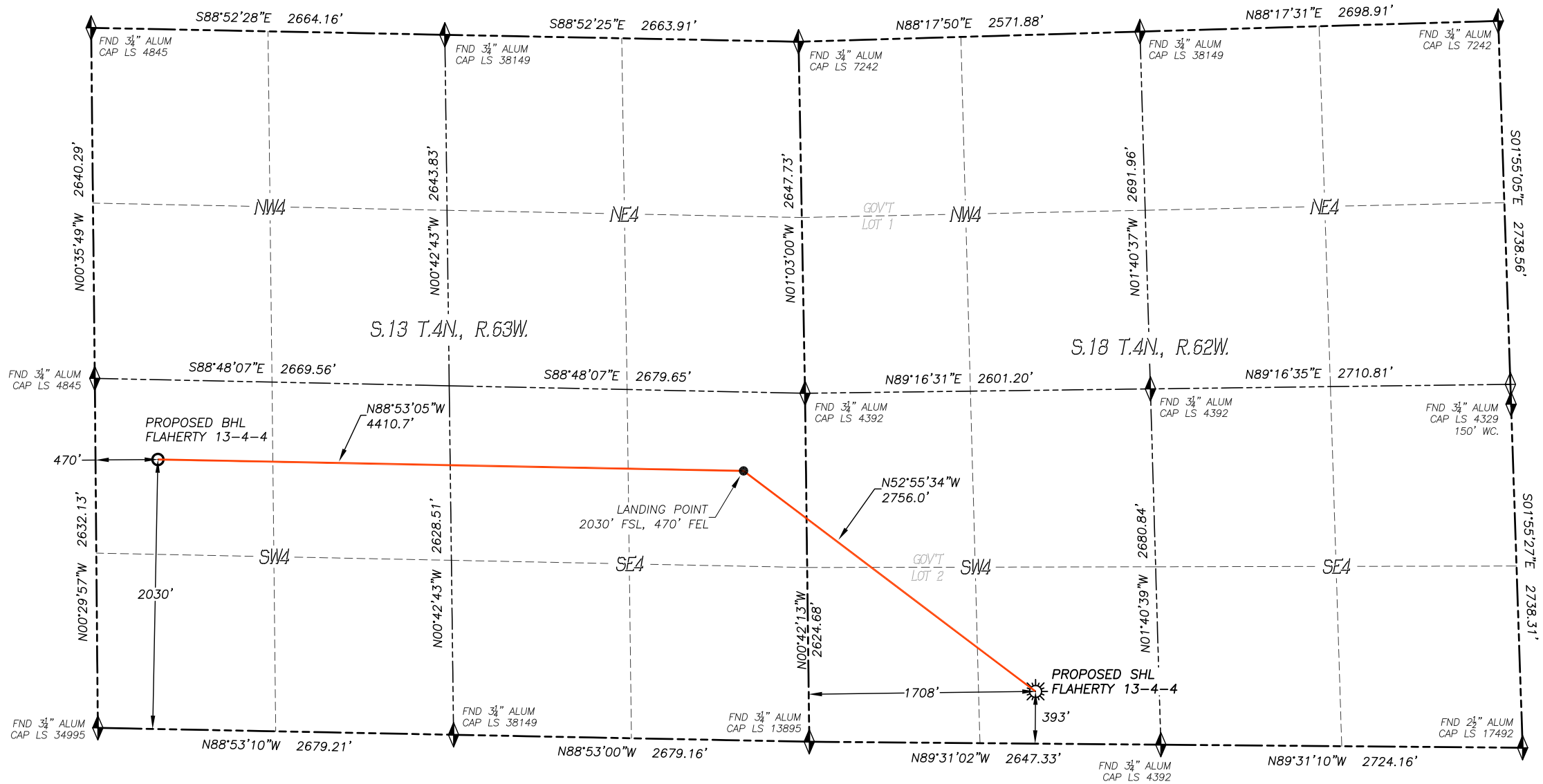


WELL LOCATION CERTIFICATE
FLAHERTY 13-4-4
SECTION 18, TOWNSHIP 4 NORTH, RANGE 62 WEST OF THE 6TH P.M.



IN ACCORDANCE WITH A REQUEST FROM CONFLUENCE RESOURCES, DALEY LAND SURVEYING, INC. HAS DETERMINED THE SURFACE LOCATION OF THE FLAHERTY 13-4-4 WELL TO BE 393' FSL, 1708' FWL, AS MEASURED AT NINETY (90) DEGREES FROM THE SECTION LINES OF SECTION 18, TOWNSHIP 4 NORTH, RANGE 62 WEST AND THE BOTTOM HOLE LOCATION TO BE 2030' FSL, 470' FWL, AS MEASURED AT NINETY (90) DEGREES FROM THE SECTION LINES OF SECTION 13, TOWNSHIP 4 NORTH, RANGE 63 WEST, OF THE 6TH PRINCIPAL MERIDIAN, WELD COUNTY, COLORADO.

I HEREBY STATE THAT THIS WELL LOCATION CERTIFICATE WAS PREPARED BY ME OR UNDER MY DIRECT SUPERVISION, THAT THE WORK WAS COMPLETED ON 3/3/2020 FOR AND ON BEHALF OF CONFLUENCE RESOURCES, AND THAT THIS MAP DOES NOT REPRESENT A BOUNDARY SURVEY, IT IS NOT A LAND SURVEY PLAT OR AN IMPROVEMENT SURVEY PLAT AND IT IS NOT TO BE RELIED UPON FOR THE ESTABLISHMENT OF FENCE, BUILDING OR OTHER FUTURE IMPROVEMENT LINES.

NOTES:

- 1) BEARINGS FOR THIS MAP ARE ASSUMED AND BASED UPON GPS OBSERVATIONS MADE BETWEEN MONUMENTS LOCATED AT THE SOUTH QUARTER CORNER AND THE SOUTHWEST CORNER OF SECTION 18, T.4N., R.62W.
- 2) HORIZONTAL DATUM IS NAD83.
- 3) VERTICAL DATUM IS NAVD88 AND ORIGINATES FROM THE LOCAL C.O.R.S. NETWORK, UTILIZING THE GEOID12A MODEL.
- 4) SEE LOCATION DRAWING FOR VISIBLE IMPROVEMENTS WITHIN 500' OF PROPOSED DISTURBED AREA.
- 5) SURFACE USE: RANGELAND/WELL PAD.
- 6) INST. OPERATOR: KYLE DALEY.

NEAREST CULTURAL ITEMS:

BUILDING:	2515'± NE
BUILDING UNIT:	4120'± NW
HIGH OCC. BLD. UNIT:	5280'+
DES. OUTSIDE ACTIVITY AREA:	5280'+
PUBLIC ROAD:	804'± NE
ABOVE GROUND UTILITY:	740'± NE
RAILROAD:	5280'+
PROPERTY LINE:	393'± S
SCHOOL FACILITY:	5280'+
SCHOOL PROPERTY LINE:	5280'+
CHILDCARE FACILITY:	5280'+

NAD 83 LATITUDE AND LONGITUDE

SURFACE LOCATION:

LATITUDE: N40.30626°
LONGITUDE: W104.37043°
ELEV: 4563'
PDOP: 1.9
QTR/QTR: SE4/SW4

LANDING POINT/TPZ:

LATITUDE: N40.31083°
LONGITUDE: W104.37829°

BOTTOM HOLE:

LATITUDE: N40.31110°
LONGITUDE: W104.39410°

LEGEND

- FOUND MONUMENT AS DESCRIBED
- PROPOSED WELL
- EXISTING WELL
- BOTTOM HOLE
- ABANDONED WELL
- CALCULATED POSITION

