

CONFLUENCE RESOURCES



Location:	COLORADO	Slot:	SLOT#17 Flaherty 13-4-4 (393°FSL & 1708°FWL,SEC.18)
Field:	WELD COUNTY (NAD83, TRUE NORTH)	Well:	Flaherty 13-4-4
Facility:	SEC.18-T04N-R62W	Wellbore:	Flaherty 13-4-4 PWB
Plot reference wellpath is Flaherty 13-4-4 PWP Rev-A.0		Grid System: NAD83 / Lambert Colorado SP, Northern Zone (501), US feet	
True vertical depths are referenced to Rig (23) (KB)		North Reference: True north	
Reference wellpath measured depths are referenced to Rig (23) (KB)		Scale: True distance	
Rig (23) (KB) to Mean Sea Level: 4586 feet		Coordinates are in feet referenced to Slot	
Mean Sea Level to Mud line (At Slot: SLOT#17 Flaherty 13-4-4 (393°FSL & 1708°FWL,SEC.18)): 0 feet		Depths are in feet	
Offset wellpath MDs are referenced to each path's default MD datum		Created by: painseir on 2021-12-02; Database: WellArchitectDB	

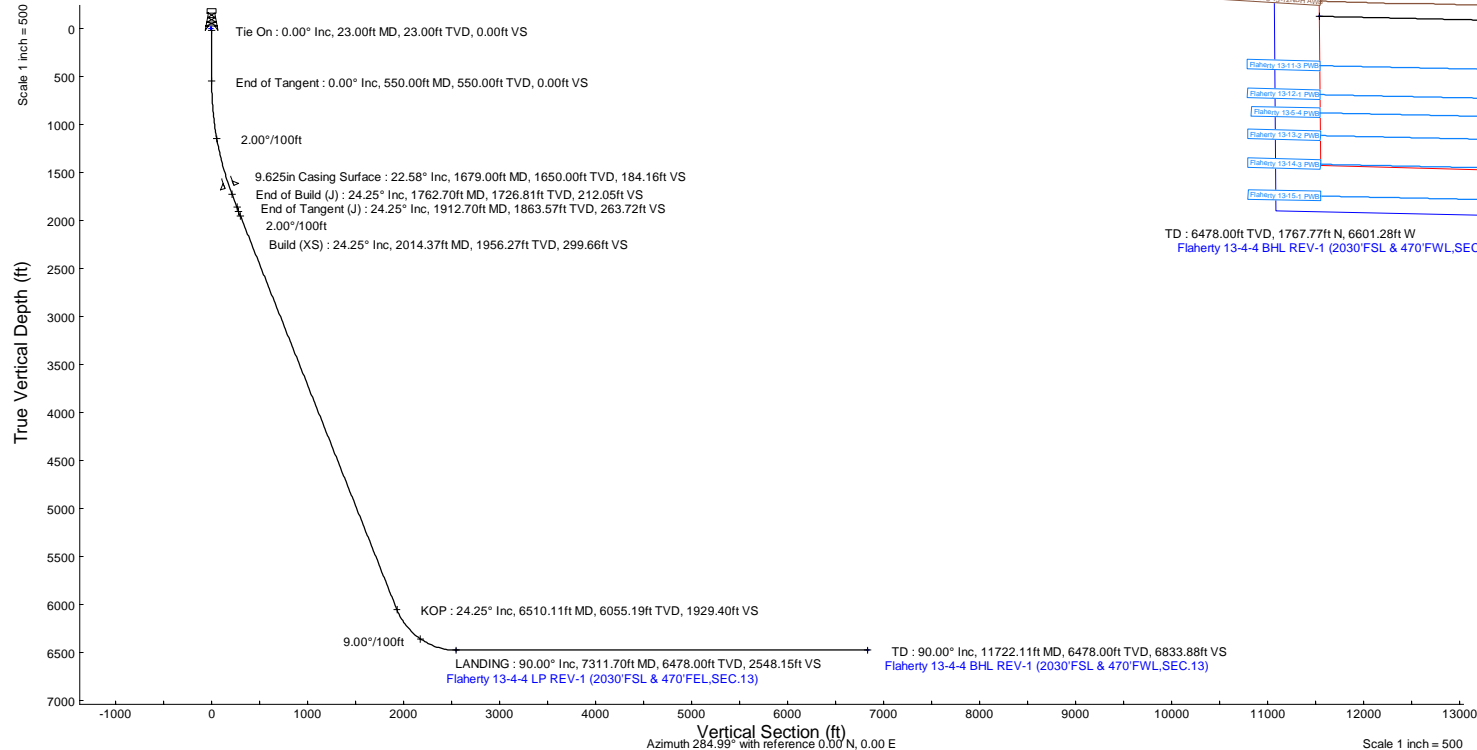
Location Information			
Facility Name	Grid East (US ft)	Grid North (US ft)	Latitude
SEC.18-T04N-R62W	3314967.040	1356246.051	40.3057900°
Slot	Local N (ft)	Local E (ft)	Latitude
SLOT#17 Flaherty 13-4-4 (393°FSL & 1708°FWL,SEC.18)	171.22	58.57	40.3062600°
Rig (23) (KB) to Mud line (At Slot: SLOT#17 Flaherty 13-4-4 (393°FSL & 1708°FWL,SEC.18))	4586ft		
Mean Sea Level to Mud line (At Slot: SLOT#17 Flaherty 13-4-4 (393°FSL & 1708°FWL,SEC.18))	0ft		
Rig (23) (KB) to Mean Sea Level	4586ft		

Hole and Casing Sections										
Name	Start MD (ft)	End MD (ft)	Interval (ft)	Start TVD (ft)	End TVD (ft)	Start Local N (ft)	Start Local E (ft)	End Local N (ft)	End Local E (ft)	Wellbore
9.625in Casing Surface	23.00	1679.00	1656.00	23.00	1650.00	0.00	0.00	163.20	-146.94	Flaherty 13-4-4 PWB

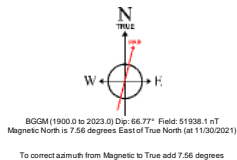
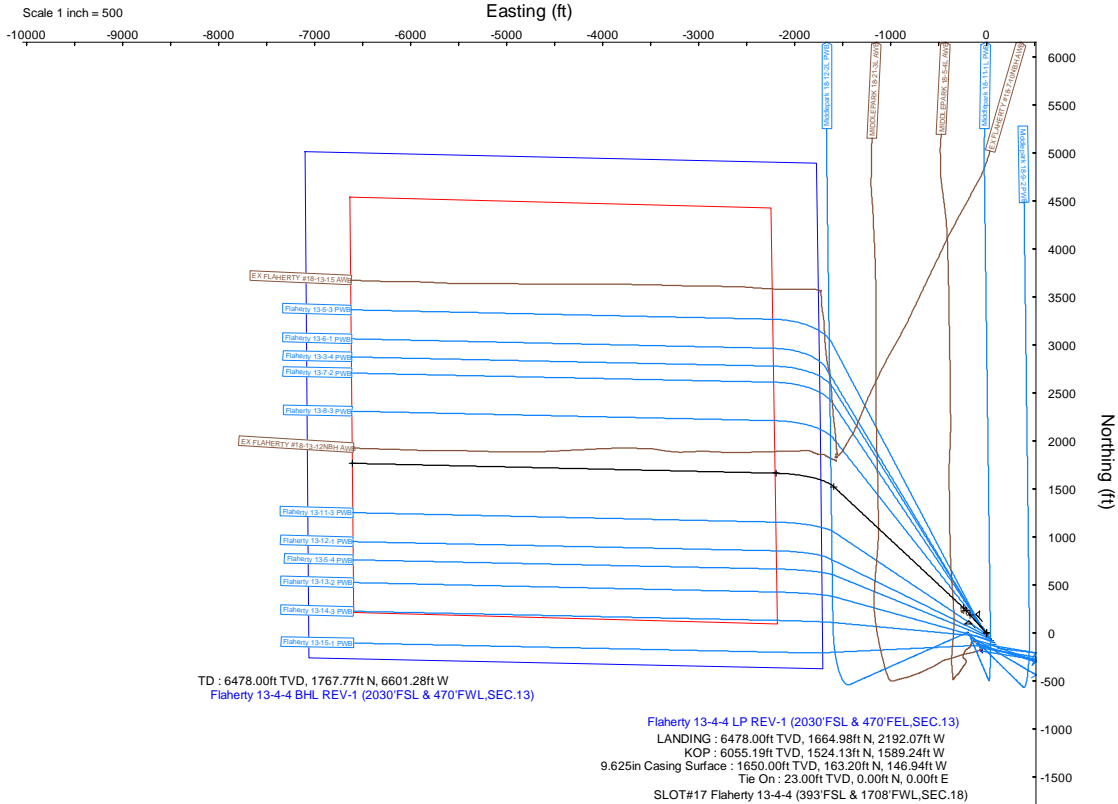
Survey Program				
Start MD (ft)	End MD (ft)	Tool	Model	Log Name/Comment
23.00	1679.00	BH NavTrak (2019)	BH NavTrak (2019) (Axial)	Flaherty 13-4-4 PWB
1679.00	11722.11	BH AutoTrak Curve/xpress (2019)	BH AutoTrak Curve/xpress (2019) (Short spacing)	Flaherty 13-4-4 PWB

Bottom Hole Location									
MD (ft)	Inc (°)	Az (°)	TVD (ft)	Local N (ft)	Local E (ft)	Grid East (US ft)	Grid North (US ft)	Latitude	Longitude
11722.11	90.000	271.335	6478.00	1767.77	-6601.28	3308400.46	1358101.46	40.3111100°	-104.3941000°

Targets									
Name	MD (ft)	TVD (ft)	Local N (ft)	Local E (ft)	Grid East (US ft)	Grid North (US ft)	Latitude	Longitude	
SEC.13-T04N-R63W	N/A	0.00	-189.44	-41.84	3314984.00	1356228.05	40.3057400°	-104.3705800°	
SEC.13-T04N-R63W (SB 470)	N/A	0.00	-189.44	-41.84	3314984.00	1356228.05	40.3057400°	-104.3705800°	
Flaherty 13-4-4 BHL REV-1 (2030°FSL & 470°FWL,SEC.13)	11722.11	6478.00	1767.77	-6601.28	3308400.46	1358101.46	40.3111100°	-104.3941000°	
Flaherty 13-4-4 LP REV-1 (2030°FSL & 470°FEL,SEC.13)	7311.70	6478.00	1664.98	-2192.07	3312810.42	1358054.85	40.3108300°	-104.3782900°	



Well Profile Data								
Design Comment	MD (ft)	Inc (°)	Az (°)	TVD (ft)	Local N (ft)	Local E (ft)	DLS (°/100ft)	VS (ft)
Tie On	23.00	0.000	318.000	23.00	0.00	0.00	0.00	0.00
End of Tangent	550.00	0.000	318.000	550.00	0.00	0.00	0.00	0.00
End of Build (J)	1762.70	24.254	318.000	1726.81	187.92	-169.20	2.00	212.05
End of Tangent (J)	1912.70	24.254	318.000	1863.57	233.71	-210.43	0.00	263.72
Build (XS)	2014.37	24.254	313.049	1956.27	263.48	-239.66	2.00	299.66
KOP	6510.11	24.254	313.049	6055.19	1524.13	-1589.24	0.00	1929.40
LANDING	7311.70	90.000	271.335	6478.00	1664.98	-2192.07	9.00	2548.15
TD	11722.11	90.000	271.335	6478.00	1767.77	-6601.28	0.00	6833.88



Planned Wellpath Report

Flaherty 13-4-4 PWP Rev-A.0

Page 1 of 8

REFERENCE WELLPATH IDENTIFICATION

Operator	CONFLUENCE RESOURCES	Well	Flaherty 13-4-4
Field	WELD COUNTY (NAD83, TRUE NORTH)	API	0512347451
Facility	SEC.18-T04N-R62W	Wellbore	Flaherty 13-4-4 PWB
Slot	SLOT#17 Flaherty 13-4-4 (393'FSL & 1708'FWL,SEC.18)		

REPORT SETUP INFORMATION

Projection System	NAD83 / Lambert Colorado SP, Northern Zone (501), US feet	Software System	WellArchitect® 6.0
North Reference	True	User	Painsetr
Scale	0.999957	Report Generated	12/2/2021 at 1:55:56 PM
Convergence at slot	0.73° East	Database	WellArchitectDB

WELLPATH LOCATION

	Local coordinates		Grid coordinates		Geographic coordinates	
	North[ft]	East[ft]	Easting[US ft]	Northing[US ft]	Latitude	Longitude
Slot Location	171.22	58.57	3315023.42	1356418.00	40.3062600°	-104.3704300°
Facility Reference Pt			3314967.04	1356246.05	40.3057900°	-104.3706400°
Field Reference Pt			3230456.90	1245096.09	40.0032400°	-104.6773400°

WELLPATH DATUM

Calculation method	Minimum curvature	Rig (23') (KB) to Facility Vertical Datum	4586.00ft
Horizontal Reference Pt	Slot	Rig (23') (KB) to Mean Sea Level	4586.00ft
Vertical Reference Pt	Rig (23') (KB)	Rig (23') (KB) to Mud Line at Slot (SLOT#17 Flaherty 13-4-4 (393'FSL & 1708'FWL,SEC.18))	4586.00ft
MD Reference Pt	Rig (23') (KB)	Section Origin	N 0.00, E 0.00 ft
Field Vertical Reference	Mean Sea Level	Section Azimuth	284.99°

Planned Wellpath Report

Flaherty 13-4-4 PWP Rev-A.0

Page 2 of 8

REFERENCE WELLPATH IDENTIFICATION

Operator	CONFLUENCE RESOURCES	Well	Flaherty 13-4-4
Field	WELD COUNTY (NAD83, TRUE NORTH)	API	0512347451
Facility	SEC.18-T04N-R62W	Wellbore	Flaherty 13-4-4 PWB
Slot	SLOT#17 Flaherty 13-4-4 (393'FSL & 1708'FWL,SEC.18)		

WELLPATH DATA (125 stations) † = interpolated, ‡ = extrapolated station

MD [ft]	Inclination [°]	Azimuth [°]	TVD [ft]	Vert Sect [ft]	North [ft]	East [ft]	Grid East [US ft]	Grid North [US ft]	Latitude	Longitude	DLS [°/100ft]	Comments
0.00†	0.000	318.000	0.00	0.00	0.00	0.00	3315023.42	1356418.00	40.3062600	-104.3704300	0.00	
23.00	0.000	318.000	23.00	0.00	0.00	0.00	3315023.42	1356418.00	40.3062600	-104.3704300	0.00	Tie On
123.00†	0.000	318.000	123.00	0.00	0.00	0.00	3315023.42	1356418.00	40.3062600	-104.3704300	0.00	
223.00†	0.000	318.000	223.00	0.00	0.00	0.00	3315023.42	1356418.00	40.3062600	-104.3704300	0.00	
323.00†	0.000	318.000	323.00	0.00	0.00	0.00	3315023.42	1356418.00	40.3062600	-104.3704300	0.00	
423.00†	0.000	318.000	423.00	0.00	0.00	0.00	3315023.42	1356418.00	40.3062600	-104.3704300	0.00	
523.00†	0.000	318.000	523.00	0.00	0.00	0.00	3315023.42	1356418.00	40.3062600	-104.3704300	0.00	
550.00	0.000	318.000	550.00	0.00	0.00	0.00	3315023.42	1356418.00	40.3062600	-104.3704300	0.00	End of Tangent
623.00†	1.460	318.000	622.99	0.78	0.69	-0.62	3315022.79	1356418.68	40.3062619	-104.3704322	2.00	
723.00†	3.460	318.000	722.89	4.38	3.88	-3.49	3315019.88	1356421.84	40.3062707	-104.3704425	2.00	
823.00†	5.460	318.000	822.59	10.90	9.66	-8.70	3315014.60	1356427.55	40.3062865	-104.3704612	2.00	
923.00†	7.460	318.000	921.95	20.33	18.02	-16.23	3315006.97	1356435.81	40.3063095	-104.3704882	2.00	
1023.00†	9.460	318.000	1020.85	32.67	28.95	-26.07	3314996.99	1356446.62	40.3063395	-104.3705235	2.00	
1123.00†	11.460	318.000	1119.19	47.89	42.44	-38.22	3314984.67	1356459.95	40.3063765	-104.3705670	2.00	
1223.00†	13.460	318.000	1216.83	65.99	58.48	-52.65	3314970.03	1356475.80	40.3064205	-104.3706188	2.00	
1323.00†	15.460	318.000	1313.65	86.93	77.03	-69.36	3314953.09	1356494.14	40.3064714	-104.3706787	2.00	
1423.00†	17.460	318.000	1409.55	110.69	98.09	-88.32	3314933.87	1356514.95	40.3065292	-104.3707467	2.00	
1523.00†	19.460	318.000	1504.40	137.24	121.62	-109.51	3314912.38	1356538.21	40.3065938	-104.3708226	2.00	
1623.00†	21.460	318.000	1598.09	166.55	147.59	-132.89	3314888.67	1356563.88	40.3066651	-104.3709065	2.00	
1723.00†	23.460	318.000	1690.50	198.59	175.98	-158.46	3314862.75	1356591.94	40.3067431	-104.3709981	2.00	
1762.70	24.254	318.000	1726.81	212.05	187.92	-169.20	3314851.85	1356603.74	40.3067758	-104.3710367	2.00	End of Build (J)
1823.00†	24.254	318.000	1781.78	232.82	206.32	-185.77	3314835.04	1356621.93	40.3068263	-104.3710961	0.00	
1912.70	24.254	318.000	1863.57	263.72	233.71	-210.43	3314810.04	1356649.00	40.3069015	-104.3711845	0.00	End of Tangent (J)
1923.00†	24.247	317.499	1872.96	267.28	236.84	-213.27	3314807.16	1356652.09	40.3069101	-104.3711947	2.00	
2014.37	24.254	313.049	1956.27	299.66	263.48	-239.66	3314780.43	1356678.39	40.3069832	-104.3712893	2.00	Build (XS)
2023.00†	24.254	313.049	1964.14	302.79	265.90	-242.26	3314777.81	1356680.78	40.3069899	-104.3712986	0.00	
2123.00†	24.254	313.049	2055.31	339.04	293.94	-272.28	3314747.44	1356708.44	40.3070669	-104.3714062	0.00	
2223.00†	24.254	313.049	2146.49	375.30	321.98	-302.29	3314717.06	1356736.09	40.3071438	-104.3715139	0.00	
2323.00†	24.254	313.049	2237.66	411.55	350.03	-332.31	3314686.69	1356763.75	40.3072208	-104.3716215	0.00	
2423.00†	24.254	313.049	2328.83	447.80	378.07	-362.33	3314656.32	1356791.40	40.3072978	-104.3717291	0.00	

Planned Wellpath Report

Flaherty 13-4-4 PWP Rev-A.0

Page 3 of 8

REFERENCE WELLPATH IDENTIFICATION

Operator	CONFLUENCE RESOURCES	Well	Flaherty 13-4-4
Field	WELD COUNTY (NAD83, TRUE NORTH)	API	0512347451
Facility	SEC.18-T04N-R62W	Wellbore	Flaherty 13-4-4 PWB
Slot	SLOT#17 Flaherty 13-4-4 (393'FSL & 1708'FWL,SEC.18)		

WELLPATH DATA (125 stations) † = interpolated, ‡ = extrapolated station

MD [ft]	Inclination [°]	Azimuth [°]	TVD [ft]	Vert Sect [ft]	North [ft]	East [ft]	Grid East [US ft]	Grid North [US ft]	Latitude	Longitude	DLS [°/100ft]	Comments
2523.00†	24.254	313.049	2420.01	484.05	406.11	-392.35	3314625.95	1356819.06	40.3073747	-104.3718368	0.00	
2623.00†	24.254	313.049	2511.18	520.30	434.15	-422.37	3314595.58	1356846.71	40.3074517	-104.3719444	0.00	
2723.00†	24.254	313.049	2602.35	556.55	462.19	-452.39	3314565.20	1356874.37	40.3075287	-104.3720520	0.00	
2823.00†	24.254	313.049	2693.53	592.80	490.23	-482.41	3314534.83	1356902.02	40.3076056	-104.3721597	0.00	
2923.00†	24.254	313.049	2784.70	629.05	518.27	-512.43	3314504.46	1356929.68	40.3076826	-104.3722673	0.00	
3023.00†	24.254	313.049	2875.87	665.30	546.31	-542.45	3314474.09	1356957.33	40.3077596	-104.3723749	0.00	
3123.00†	24.254	313.049	2967.05	701.55	574.35	-572.46	3314443.71	1356984.99	40.3078365	-104.3724826	0.00	
3223.00†	24.254	313.049	3058.22	737.80	602.39	-602.48	3314413.34	1357012.64	40.3079135	-104.3725902	0.00	
3323.00†	24.254	313.049	3149.39	774.05	630.43	-632.50	3314382.97	1357040.30	40.3079905	-104.3726978	0.00	
3423.00†	24.254	313.049	3240.57	810.30	658.48	-662.52	3314352.60	1357067.95	40.3080675	-104.3728055	0.00	
3523.00†	24.254	313.049	3331.74	846.55	686.52	-692.54	3314322.23	1357095.61	40.3081444	-104.3729131	0.00	
3623.00†	24.254	313.049	3422.91	882.81	714.56	-722.56	3314291.85	1357123.26	40.3082214	-104.3730207	0.00	
3723.00†	24.254	313.049	3514.09	919.06	742.60	-752.58	3314261.48	1357150.92	40.3082984	-104.3731284	0.00	
3823.00†	24.254	313.049	3605.26	955.31	770.64	-782.60	3314231.11	1357178.57	40.3083753	-104.3732360	0.00	
3923.00†	24.254	313.049	3696.43	991.56	798.68	-812.62	3314200.74	1357206.23	40.3084523	-104.3733437	0.00	
4023.00†	24.254	313.049	3787.61	1027.81	826.72	-842.63	3314170.36	1357233.88	40.3085293	-104.3734513	0.00	
4123.00†	24.254	313.049	3878.78	1064.06	854.76	-872.65	3314139.99	1357261.54	40.3086062	-104.3735589	0.00	
4223.00†	24.254	313.049	3969.95	1100.31	882.80	-902.67	3314109.62	1357289.19	40.3086832	-104.3736666	0.00	
4323.00†	24.254	313.049	4061.13	1136.56	910.84	-932.69	3314079.25	1357316.85	40.3087602	-104.3737742	0.00	
4423.00†	24.254	313.049	4152.30	1172.81	938.88	-962.71	3314048.88	1357344.50	40.3088371	-104.3738818	0.00	
4523.00†	24.254	313.049	4243.47	1209.06	966.93	-992.73	3314018.50	1357372.16	40.3089141	-104.3739895	0.00	
4623.00†	24.254	313.049	4334.65	1245.31	994.97	-1022.75	3313988.13	1357399.81	40.3089911	-104.3740971	0.00	
4723.00†	24.254	313.049	4425.82	1281.56	1023.01	-1052.77	3313957.76	1357427.47	40.3090680	-104.3742048	0.00	
4823.00†	24.254	313.049	4516.99	1317.81	1051.05	-1082.79	3313927.39	1357455.12	40.3091450	-104.3743124	0.00	
4923.00†	24.254	313.049	4608.17	1354.06	1079.09	-1112.80	3313897.01	1357482.78	40.3092220	-104.3744200	0.00	
5023.00†	24.254	313.049	4699.34	1390.31	1107.13	-1142.82	3313866.64	1357510.43	40.3092989	-104.3745277	0.00	
5123.00†	24.254	313.049	4790.51	1426.57	1135.17	-1172.84	3313836.27	1357538.09	40.3093759	-104.3746353	0.00	
5223.00†	24.254	313.049	4881.69	1462.82	1163.21	-1202.86	3313805.90	1357565.74	40.3094529	-104.3747430	0.00	
5323.00†	24.254	313.049	4972.86	1499.07	1191.25	-1232.88	3313775.52	1357593.40	40.3095298	-104.3748506	0.00	
5423.00†	24.254	313.049	5064.03	1535.32	1219.29	-1262.90	3313745.15	1357621.05	40.3096068	-104.3749582	0.00	

Planned Wellpath Report

Flaherty 13-4-4 PWP Rev-A.0

Page 4 of 8

REFERENCE WELLPATH IDENTIFICATION

Operator	CONFLUENCE RESOURCES	Well	Flaherty 13-4-4
Field	WELD COUNTY (NAD83, TRUE NORTH)	API	0512347451
Facility	SEC.18-T04N-R62W	Wellbore	Flaherty 13-4-4 PWB
Slot	SLOT#17 Flaherty 13-4-4 (393'FSL & 1708'FWL,SEC.18)		

WELLPATH DATA (125 stations) † = interpolated, ‡ = extrapolated station

MD [ft]	Inclination [°]	Azimuth [°]	TVD [ft]	Vert Sect [ft]	North [ft]	East [ft]	Grid East [US ft]	Grid North [US ft]	Latitude	Longitude	DLS [°/100ft]	Comments
5523.00†	24.254	313.049	5155.21	1571.57	1247.33	-1292.92	3313714.78	1357648.71	40.3096838	-104.3750659	0.00	
5623.00†	24.254	313.049	5246.38	1607.82	1275.38	-1322.94	3313684.41	1357676.36	40.3097607	-104.3751735	0.00	
5723.00†	24.254	313.049	5337.55	1644.07	1303.42	-1352.96	3313654.04	1357704.02	40.3098377	-104.3752812	0.00	
5823.00†	24.254	313.049	5428.73	1680.32	1331.46	-1382.97	3313623.66	1357731.67	40.3099147	-104.3753888	0.00	
5923.00†	24.254	313.049	5519.90	1716.57	1359.50	-1412.99	3313593.29	1357759.33	40.3099916	-104.3754964	0.00	
6023.00†	24.254	313.049	5611.07	1752.82	1387.54	-1443.01	3313562.92	1357786.98	40.3100686	-104.3756041	0.00	
6123.00†	24.254	313.049	5702.24	1789.07	1415.58	-1473.03	3313532.55	1357814.64	40.3101456	-104.3757117	0.00	
6223.00†	24.254	313.049	5793.42	1825.32	1443.62	-1503.05	3313502.17	1357842.29	40.3102225	-104.3758194	0.00	
6323.00†	24.254	313.049	5884.59	1861.57	1471.66	-1533.07	3313471.80	1357869.95	40.3102995	-104.3759270	0.00	
6423.00†	24.254	313.049	5975.76	1897.82	1499.70	-1563.09	3313441.43	1357897.60	40.3103765	-104.3760347	0.00	
6510.11	24.254	313.049	6055.19	1929.40	1524.13	-1589.24	3313414.97	1357921.70	40.3104435	-104.3761284	0.00	KOP
6523.00†	25.096	311.137	6066.90	1934.19	1527.74	-1593.23	3313410.93	1357925.25	40.3104534	-104.3761427	9.00	
6623.00†	32.261	299.691	6154.64	1979.14	1554.96	-1632.47	3313371.35	1357951.97	40.3105281	-104.3762834	9.00	
6723.00†	40.109	292.185	6235.33	2037.03	1580.40	-1685.59	3313317.92	1357976.73	40.3105979	-104.3764739	9.00	
6823.00†	48.303	286.826	6306.98	2106.45	1603.42	-1751.29	3313251.93	1357998.91	40.3106611	-104.3767095	9.00	
6923.00†	56.689	282.698	6367.82	2185.67	1623.45	-1827.94	3313175.03	1358017.96	40.3107161	-104.3769844	9.00	
7023.00†	65.187	279.303	6416.36	2272.77	1640.00	-1913.67	3313089.10	1358033.42	40.3107615	-104.3772917	9.00	
7123.00†	73.753	276.348	6451.41	2365.58	1652.67	-2006.36	3312996.27	1358044.91	40.3107963	-104.3776241	9.00	
7223.00†	82.355	273.642	6472.09	2461.82	1661.15	-2103.72	3312898.81	1358052.14	40.3108195	-104.3779732	9.00	
7311.70	90.000	271.335	6478.00†	2548.15	1664.98	-2192.07	3312810.42	1358054.85	40.3108300	-104.3782900	9.00	LANDING
7323.00†	90.000	271.335	6478.00	2559.13	1665.24	-2203.37	3312799.12	1358054.97	40.3108307	-104.3783305	0.00	
7423.00†	90.000	271.335	6478.00	2656.30	1667.57	-2303.34	3312699.13	1358056.02	40.3108371	-104.3786890	0.00	
7523.00†	90.000	271.335	6478.00	2753.48	1669.90	-2403.31	3312599.14	1358057.08	40.3108435	-104.3790474	0.00	
7623.00†	90.000	271.335	6478.00	2850.65	1672.23	-2503.28	3312499.15	1358058.14	40.3108498	-104.3794059	0.00	
7723.00†	90.000	271.335	6478.00	2947.82	1674.56	-2603.26	3312399.16	1358059.19	40.3108562	-104.3797644	0.00	
7823.00†	90.000	271.335	6478.00	3045.00	1676.89	-2703.23	3312299.17	1358060.25	40.3108626	-104.3801229	0.00	
7923.00†	90.000	271.335	6478.00	3142.17	1679.22	-2803.20	3312199.18	1358061.31	40.3108689	-104.3804813	0.00	
8023.00†	90.000	271.335	6478.00	3239.34	1681.55	-2903.18	3312099.19	1358062.36	40.3108753	-104.3808398	0.00	
8123.00†	90.000	271.335	6478.00	3336.51	1683.89	-3003.15	3311999.20	1358063.42	40.3108817	-104.3811983	0.00	
8223.00†	90.000	271.335	6478.00	3433.69	1686.22	-3103.12	3311899.21	1358064.48	40.3108880	-104.3815567	0.00	

Planned Wellpath Report

Flaherty 13-4-4 PWP Rev-A.0

Page 5 of 8

REFERENCE WELLPATH IDENTIFICATION

Operator	CONFLUENCE RESOURCES	Well	Flaherty 13-4-4
Field	WELD COUNTY (NAD83, TRUE NORTH)	API	0512347451
Facility	SEC.18-T04N-R62W	Wellbore	Flaherty 13-4-4 PWB
Slot	SLOT#17 Flaherty 13-4-4 (393'FSL & 1708'FWL,SEC.18)		

WELLPATH DATA (125 stations) † = interpolated, ‡ = extrapolated station

MD [ft]	Inclination [°]	Azimuth [°]	TVD [ft]	Vert Sect [ft]	North [ft]	East [ft]	Grid East [US ft]	Grid North [US ft]	Latitude	Longitude	DLS [°/100ft]	Comments
8323.00†	90.000	271.335	6478.00	3530.86	1688.55	-3203.09	3311799.22	1358065.53	40.3108944	-104.3819152	0.00	
8423.00†	90.000	271.335	6478.00	3628.03	1690.88	-3303.07	3311699.23	1358066.59	40.3109008	-104.3822737	0.00	
8523.00†	90.000	271.335	6478.00	3725.21	1693.21	-3403.04	3311599.24	1358067.65	40.3109071	-104.3826321	0.00	
8623.00†	90.000	271.335	6478.00	3822.38	1695.54	-3503.01	3311499.25	1358068.71	40.3109135	-104.3829906	0.00	
8723.00†	90.000	271.335	6478.00	3919.55	1697.87	-3602.99	3311399.26	1358069.76	40.3109198	-104.3833491	0.00	
8823.00†	90.000	271.335	6478.00	4016.73	1700.20	-3702.96	3311299.27	1358070.82	40.3109262	-104.3837075	0.00	
8923.00†	90.000	271.335	6478.00	4113.90	1702.53	-3802.93	3311199.28	1358071.88	40.3109325	-104.3840660	0.00	
9023.00†	90.000	271.335	6478.00	4211.07	1704.86	-3902.90	3311099.29	1358072.93	40.3109389	-104.3844245	0.00	
9123.00†	90.000	271.335	6478.00	4308.25	1707.19	-4002.88	3310999.30	1358073.99	40.3109453	-104.3847830	0.00	
9223.00†	90.000	271.335	6478.00	4405.42	1709.52	-4102.85	3310899.31	1358075.05	40.3109516	-104.3851414	0.00	
9323.00†	90.000	271.335	6478.00	4502.59	1711.85	-4202.82	3310799.32	1358076.10	40.3109580	-104.3854999	0.00	
9423.00†	90.000	271.335	6478.00	4599.76	1714.18	-4302.79	3310699.33	1358077.16	40.3109643	-104.3858584	0.00	
9523.00†	90.000	271.335	6478.00	4696.94	1716.51	-4402.77	3310599.34	1358078.22	40.3109707	-104.3862168	0.00	
9623.00†	90.000	271.335	6478.00	4794.11	1718.84	-4502.74	3310499.35	1358079.27	40.3109770	-104.3865753	0.00	
9723.00†	90.000	271.335	6478.00	4891.28	1721.18	-4602.71	3310399.36	1358080.33	40.3109834	-104.3869338	0.00	
9823.00†	90.000	271.335	6478.00	4988.46	1723.51	-4702.69	3310299.37	1358081.39	40.3109897	-104.3872922	0.00	
9923.00†	90.000	271.335	6478.00	5085.63	1725.84	-4802.66	3310199.38	1358082.45	40.3109960	-104.3876507	0.00	
10023.00†	90.000	271.335	6478.00	5182.80	1728.17	-4902.63	3310099.39	1358083.50	40.3110024	-104.3880092	0.00	
10123.00†	90.000	271.335	6478.00	5279.98	1730.50	-5002.60	3309999.41	1358084.56	40.3110087	-104.3883677	0.00	
10223.00†	90.000	271.335	6478.00	5377.15	1732.83	-5102.58	3309899.42	1358085.62	40.3110151	-104.3887261	0.00	
10323.00†	90.000	271.335	6478.00	5474.32	1735.16	-5202.55	3309799.43	1358086.67	40.3110214	-104.3890846	0.00	
10423.00†	90.000	271.335	6478.00	5571.49	1737.49	-5302.52	3309699.44	1358087.73	40.3110277	-104.3894431	0.00	
10523.00†	90.000	271.335	6478.00	5668.67	1739.82	-5402.50	3309599.45	1358088.79	40.3110341	-104.3898015	0.00	
10623.00†	90.000	271.335	6478.00	5765.84	1742.15	-5502.47	3309499.46	1358089.84	40.3110404	-104.3901600	0.00	
10723.00†	90.000	271.335	6478.00	5863.01	1744.48	-5602.44	3309399.47	1358090.90	40.3110468	-104.3905185	0.00	
10823.00†	90.000	271.335	6478.00	5960.19	1746.81	-5702.41	3309299.48	1358091.96	40.3110531	-104.3908770	0.00	
10923.00†	90.000	271.335	6478.00	6057.36	1749.14	-5802.39	3309199.49	1358093.01	40.3110594	-104.3912354	0.00	
11023.00†	90.000	271.335	6478.00	6154.53	1751.47	-5902.36	3309099.50	1358094.07	40.3110658	-104.3915939	0.00	
11123.00†	90.000	271.335	6478.00	6251.71	1753.80	-6002.33	3308999.51	1358095.13	40.3110721	-104.3919524	0.00	
11223.00†	90.000	271.335	6478.00	6348.88	1756.13	-6102.31	3308899.52	1358096.19	40.3110784	-104.3923108	0.00	

Planned Wellpath Report

Flaherty 13-4-4 PWP Rev-A.0

Page 6 of 8

REFERENCE WELLPATH IDENTIFICATION

Operator	CONFLUENCE RESOURCES	Well	Flaherty 13-4-4
Field	WELD COUNTY (NAD83, TRUE NORTH)	API	0512347451
Facility	SEC.18-T04N-R62W	Wellbore	Flaherty 13-4-4 PWB
Slot	SLOT#17 Flaherty 13-4-4 (393'FSL & 1708'FWL,SEC.18)		

WELLPATH DATA (125 stations) † = interpolated, ‡ = extrapolated station

MD [ft]	Inclination [°]	Azimuth [°]	TVD [ft]	Vert Sect [ft]	North [ft]	East [ft]	Grid East [US ft]	Grid North [US ft]	Latitude	Longitude	DLS [°/100ft]	Comments
11323.00†	90.000	271.335	6478.00	6446.05	1758.47	-6202.28	3308799.53	1358097.24	40.3110848	-104.3926693	0.00	
11423.00†	90.000	271.335	6478.00	6543.22	1760.80	-6302.25	3308699.54	1358098.30	40.3110911	-104.3930278	0.00	
11523.00†	90.000	271.335	6478.00	6640.40	1763.13	-6402.22	3308599.55	1358099.36	40.3110974	-104.3933863	0.00	
11623.00†	90.000	271.335	6478.00	6737.57	1765.46	-6502.20	3308499.56	1358100.41	40.3111037	-104.3937447	0.00	
11722.11	90.000	271.335	6478.00 [‡]	6833.88	1767.77	-6601.28	3308400.46	1358101.46	40.3111100	-104.3941000	0.00	TD

HOLE & CASING SECTIONS - Ref Wellbore: Flaherty 13-4-4 PWB Ref Wellpath: Flaherty 13-4-4 PWP Rev-A.0

String/Diameter	Start MD [ft]	End MD [ft]	Interval [ft]	Start TVD [ft]	End TVD [ft]	Start N/S [ft]	Start E/W [ft]	End N/S [ft]	End E/W [ft]
9.625in Casing Surface	23.00	1679.00	1656.00	23.00	1650.00	0.00	0.00	163.20	-146.94

REFERENCE WELLPATH IDENTIFICATION

Operator	CONFLUENCE RESOURCES	Well	Flaherty 13-4-4
Field	WELD COUNTY (NAD83, TRUE NORTH)	API	0512347451
Facility	SEC.18-T04N-R62W	Wellbore	Flaherty 13-4-4 PWB
Slot	SLOT#17 Flaherty 13-4-4 (393'FSL & 1708'FWL,SEC.18)		

TARGETS

Name	MD [ft]	TVD [ft]	North [ft]	East [ft]	Grid East [US ft]	Grid North [US ft]	Latitude	Longitude	Shape
SEC.13-T04N-R63W	N/A	0.00	-189.44	-41.84	3314984.00	1356228.05	40.3057400	-104.3705800	polygon
2D Polygon: dimensions not calculated									
SEC.13-T04N-R63W (SB 470')	N/A	0.00	-189.44	-41.84	3314984.00	1356228.05	40.3057400	-104.3705800	polygon
2D Polygon: dimensions not calculated									
2) Flaherty 13-4-4 BHL REV-1 (2030'FSL & 470'FWL,SEC.13)	11722.11	6478.00	1767.77	-6601.28	3308400.46	1358101.46	40.3111100	-104.3941000	point
1) Flaherty 13-4-4 LP REV-1 (2030'FSL & 470'FEL,SEC.13)	7311.70	6478.00	1664.98	-2192.07	3312810.42	1358054.85	40.3108300	-104.3782900	point

SURVEY PROGRAM - Ref Wellbore: Flaherty 13-4-4 PWB Ref Wellpath: Flaherty 13-4-4 PWP Rev-A.0

Start MD [ft]	End MD [ft]	Positional Uncertainty Model	Log Name/Comment	Wellbore
23.00	1679.00	BH NaviTrak (2019) (Axial)		Flaherty 13-4-4 PWB
1679.00	11722.11	BH AutoTrak Curve/eXpress (2019) (Short spacing)		Flaherty 13-4-4 PWB

Planned Wellpath Report

Flaherty 13-4-4 PWP Rev-A.0

Page 8 of 8

REFERENCE WELLPATH IDENTIFICATION

Operator	CONFLUENCE RESOURCES	Well	Flaherty 13-4-4
Field	WELD COUNTY (NAD83, TRUE NORTH)	API	0512347451
Facility	SEC.18-T04N-R62W	Wellbore	Flaherty 13-4-4 PWB
Slot	SLOT#17 Flaherty 13-4-4 (393'FSL & 1708'FWL,SEC.18)		

DESIGN COMMENTS

MD [ft]	Inclination [°]	Azimuth [°]	TVD [ft]	Comment
23.00	0.000	318.000	23.00	Tie On
550.00	0.000	318.000	550.00	End of Tangent
1762.70	24.254	318.000	1726.81	End of Build (J)
1912.70	24.254	318.000	1863.57	End of Tangent (J)
2014.37	24.254	313.049	1956.27	Build (XS)
6510.11	24.254	313.049	6055.19	KOP
7311.70	90.000	271.335	6478.00	LANDING
11722.11	90.000	271.335	6478.00	TD