

CONFLUENCE RESOURCES



Location:	COLORADO	Slot:	SLOT#20 Flaherty 13-3-4 (452°FSL & 1663°FWL,SEC.18)
Field:	WELD COUNTY (NAD83, TRUE NORTH)	Well:	Flaherty 13-3-4
Facility:	SEC.18-T04N-R62W	Wellbore:	Flaherty 13-3-4 PWB
Plot reference wellpath is Flaherty 13-3-4 PWP Rev-A.0		Grid System: NAD83 / Lambert Colorado SP, Northern Zone (501), US feet	
True vertical depths are referenced to Rig (23) (KB)		North Reference: True north	
Reference wellpath measured depths are referenced to Rig (23) (KB)		Scale: True distance	
Rig (23) (KB) to Mean Sea Level: 4586 feet		Coordinates are in feet referenced to Slot	
Mean Sea Level to Mud line (At Slot: SLOT#20 Flaherty 13-3-4 (452°FSL & 1663°FWL,SEC.18)): 0 feet		Depths are in feet	
Offset wellpath MDs are referenced to each path's default MD datum		Created by: painseir on 2021-12-02; Database: WellArchitectDB	

Location Information

Facility Name		Grid East (US ft)	Grid North (US ft)	Latitude	Longitude
SEC.18-T04N-R62W		3314967.040	1356246.051	40.3057900°	-104.3706400°
Slot	Local N (ft)	Local E (ft)	Grid East (US ft)	Grid North (US ft)	Latitude
SLOT#20 Flaherty 13-3-4 (452°FSL & 1663°FWL,SEC.18)	229.51	13.95	3314978.061	1356475.713	40.3064200°
Rig (23) (KB) to Mud line (At Slot: SLOT#20 Flaherty 13-3-4 (452°FSL & 1663°FWL,SEC.18))			4586ft		
Mean Sea Level to Mud line (At Slot: SLOT#20 Flaherty 13-3-4 (452°FSL & 1663°FWL,SEC.18))			0ft		
Rig (23) (KB) to Mean Sea Level			4586ft		

Hole and Casing Sections

Name	Start MD (ft)	End MD (ft)	Interval (ft)	Start TVD (ft)	End TVD (ft)	Start Local N (ft)	Start Local E (ft)	End Local N (ft)	End Local E (ft)	Wellbore
9.625in Casing Surface	23.00	1699.34	1676.34	23.00	1650.00	0.00	0.00	264.85	-164.81	Flaherty 13-3-4 PWB

Survey Program

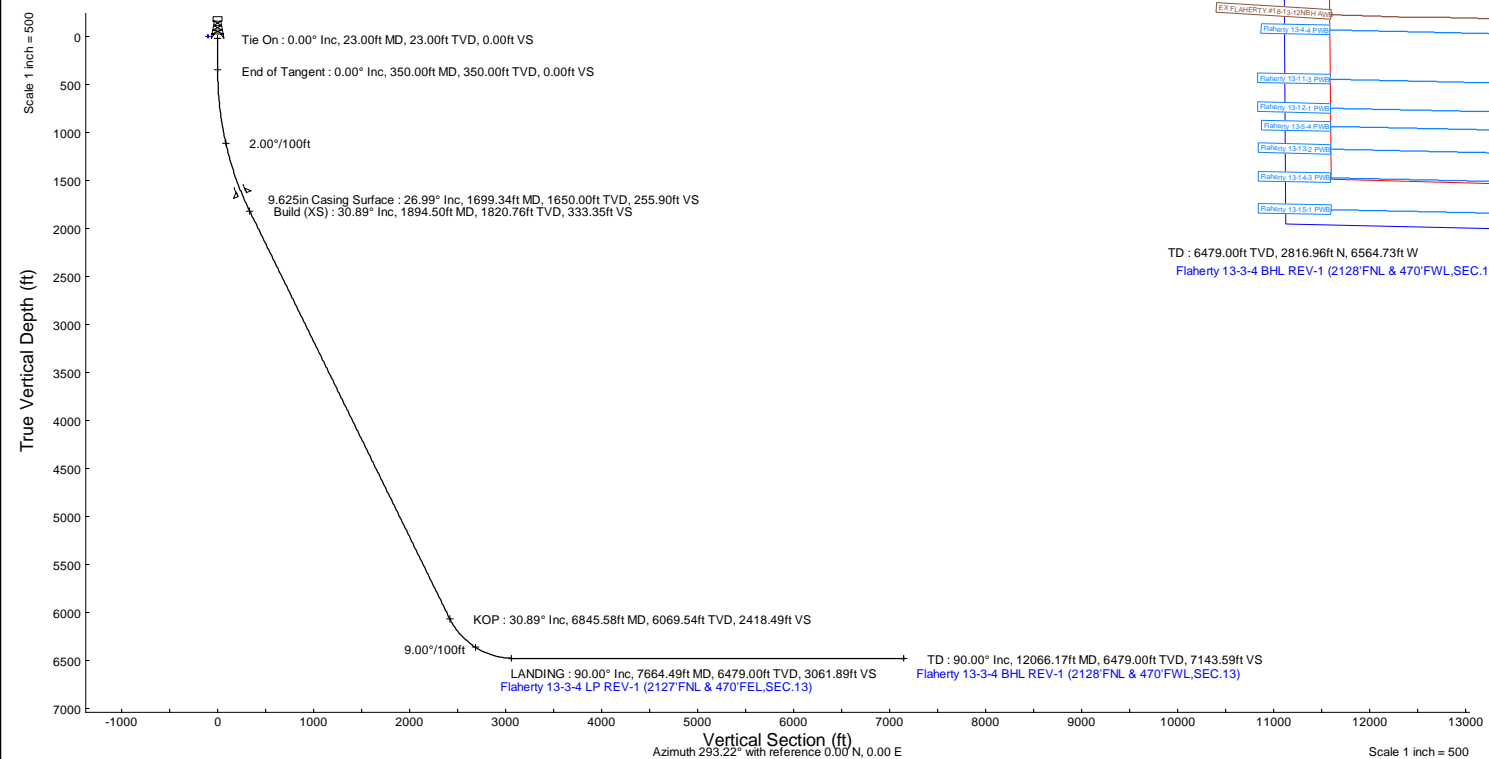
Start MD (ft)	End MD (ft)	Tool	Model	Log Name/Comment	Wellbore
23.00	1699.34	BH NavTrak (2019)	BH NavTrak (2019) (Axial)		Flaherty 13-3-4 PWB
1699.34	12088.02	BH AutoTrak CurveXpress (2019)	BH AutoTrak CurveXpress (2019) (Short spacing)		Flaherty 13-3-4 PWB

Bottom Hole Location

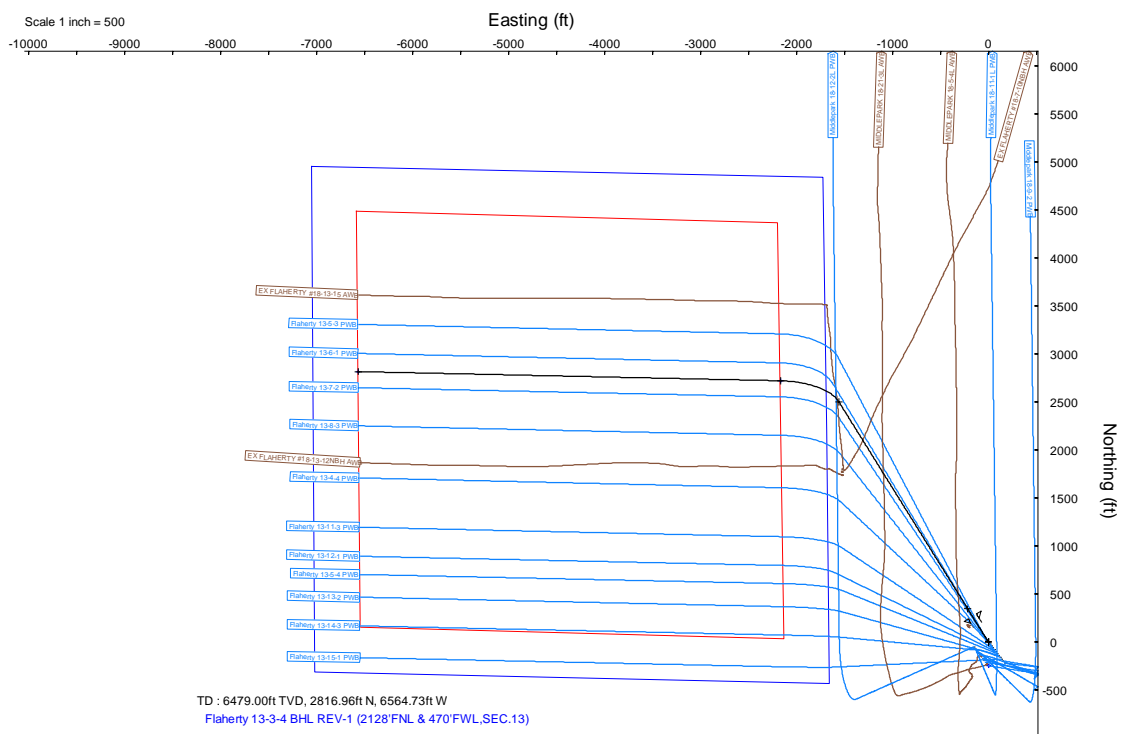
MD (ft)	Inc (°)	Az (°)	TVD (ft)	Local N (ft)	Local E (ft)	Grid East (US ft)	Grid North (US ft)	Latitude	Longitude
12066.17	90.000	271.243	6479.00	2816.96	-6564.73	3308378.28	1359208.71	40.3141500°	-104.3941300°

Targets

Name	MD (ft)	TVD (ft)	Local N (ft)	Local E (ft)	Grid East (US ft)	Grid North (US ft)	Latitude	Longitude
SEC.13-T04N-R63W	N/A	0.00	-247.73	2.79	3314984.00	1356228.05	40.3057400°	-104.3705800°
SEC.13-T04N-R63W (SB 470)	N/A	0.00	-247.73	2.79	3314984.00	1356228.05	40.3057400°	-104.3705800°
Flaherty 13-3-4 BHL REV-1 (2128°FNL & 470°FWL,SEC.13)	12066.17	6479.00	2816.96	-6564.73	3308378.28	1359208.71	40.3141500°	-104.3941300°
Flaherty 13-3-4 LP REV-1 (2127°FNL & 470°FWL,SEC.13)	7664.49	6479.00	2721.46	-2164.08	3312779.59	1359169.27	40.3138900°	-104.3783500°



Well Profile Data								
Design Comment	MD (ft)	Inc (°)	Az (°)	TVD (ft)	Local N (ft)	Local E (ft)	DLS (°/100ft)	VS (ft)
Tie On	23.00	0.000	328.107	23.00	0.00	0.00	0.00	0.00
End of Tangent	350.00	0.000	328.107	350.00	0.00	0.00	0.00	0.00
Build (XS)	1894.50	30.890	328.107	1820.76	345.01	-214.69	2.00	333.35
KOP	6845.58	30.890	328.107	6069.54	2503.13	-1557.64	0.00	2418.49
LANDING	7664.49	90.000	271.243	6479.00	2721.46	-2164.08	9.00	3061.89
TD	12066.17	90.000	271.243	6479.00	2816.96	-6564.73	0.00	7143.59



Flaherty 13-3-4 LP REV-1 (2127°FNL & 470°FWL,SEC.13)
LANDING : 6479.00ft TVD, 2721.46ft N, 2164.08ft W
KOP : 6069.54ft TVD, 2503.13ft N, 1557.64ft W
9.625in Casing Surface : 1650.00ft TVD, 264.85ft N, 164.81ft W
Tie On : 23.00ft TVD, 0.00ft N, 0.00ft E
SLOT#20 Flaherty 13-3-4 (452°FSL & 1663°FWL,SEC.18)

Planned Wellpath Report

Flaherty 13-3-4 PWP Rev-A.0

Page 1 of 8

REFERENCE WELLPATH IDENTIFICATION

Operator	CONFLUENCE RESOURCES	Well	Flaherty 13-3-4
Field	WELD COUNTY (NAD83, TRUE NORTH)	API	0512347447
Facility	SEC.18-T04N-R62W	Wellbore	Flaherty 13-3-4 PWB
Slot	SLOT#20 Flaherty 13-3-4 (452'FSL & 1663'FWL,SEC.18)		

REPORT SETUP INFORMATION

Projection System	NAD83 / Lambert Colorado SP, Northern Zone (501), US feet	Software System	WellArchitect® 6.0
North Reference	True	User	Painsetr
Scale	0.999957	Report Generated	12/2/2021 at 3:47:16 PM
Convergence at slot	0.73° East	Database	WellArchitectDB

WELLPATH LOCATION

	Local coordinates		Grid coordinates		Geographic coordinates	
	North[ft]	East[ft]	Easting[US ft]	Northing[US ft]	Latitude	Longitude
Slot Location	229.51	13.95	3314978.06	1356475.71	40.3064200°	-104.3705900°
Facility Reference Pt			3314967.04	1356246.05	40.3057900°	-104.3706400°
Field Reference Pt			3230456.90	1245096.09	40.0032400°	-104.6773400°

WELLPATH DATUM

Calculation method	Minimum curvature	Rig (23') (KB) to Facility Vertical Datum	4586.00ft
Horizontal Reference Pt	Slot	Rig (23') (KB) to Mean Sea Level	4586.00ft
Vertical Reference Pt	Rig (23') (KB)	Rig (23') (KB) to Mud Line at Slot (SLOT#20 Flaherty 13-3-4 (452'FSL & 1663'FWL,SEC.18))	4586.00ft
MD Reference Pt	Rig (23') (KB)	Section Origin	N 0.00, E 0.00 ft
Field Vertical Reference	Mean Sea Level	Section Azimuth	293.22°

Planned Wellpath Report

Flaherty 13-3-4 PWP Rev-A.0

Page 2 of 8

REFERENCE WELLPATH IDENTIFICATION

Operator	CONFLUENCE RESOURCES	Well	Flaherty 13-3-4
Field	WELD COUNTY (NAD83, TRUE NORTH)	API	0512347447
Facility	SEC.18-T04N-R62W	Wellbore	Flaherty 13-3-4 PWB
Slot	SLOT#20 Flaherty 13-3-4 (452'FSL & 1663'FWL,SEC.18)		

WELLPATH DATA (127 stations) † = interpolated, ‡ = extrapolated station

MD [ft]	Inclination [°]	Azimuth [°]	TVD [ft]	Vert Sect [ft]	North [ft]	East [ft]	Grid East [US ft]	Grid North [US ft]	Latitude	Longitude	DLS [°/100ft]	Comments
0.00†	0.000	328.107	0.00	0.00	0.00	0.00	3314978.06	1356475.71	40.3064200	-104.3705900	0.00	
23.00	0.000	328.107	23.00	0.00	0.00	0.00	3314978.06	1356475.71	40.3064200	-104.3705900	0.00	Tie On
123.00†	0.000	328.107	123.00	0.00	0.00	0.00	3314978.06	1356475.71	40.3064200	-104.3705900	0.00	
223.00†	0.000	328.107	223.00	0.00	0.00	0.00	3314978.06	1356475.71	40.3064200	-104.3705900	0.00	
323.00†	0.000	328.107	323.00	0.00	0.00	0.00	3314978.06	1356475.71	40.3064200	-104.3705900	0.00	
350.00	0.000	328.107	350.00	0.00	0.00	0.00	3314978.06	1356475.71	40.3064200	-104.3705900	0.00	End of Tangent
423.00†	1.460	328.107	422.99	0.76	0.79	-0.49	3314977.56	1356476.50	40.3064222	-104.3705918	2.00	
523.00†	3.460	328.107	522.89	4.28	4.43	-2.76	3314975.25	1356480.11	40.3064322	-104.3705999	2.00	
623.00†	5.460	328.107	622.59	10.66	11.04	-6.87	3314971.05	1356486.66	40.3064503	-104.3706146	2.00	
723.00†	7.460	328.107	721.95	19.89	20.59	-12.81	3314964.99	1356496.13	40.3064765	-104.3706359	2.00	
823.00†	9.460	328.107	820.85	31.96	33.08	-20.58	3314957.06	1356508.52	40.3065108	-104.3706638	2.00	
923.00†	11.460	328.107	919.19	46.85	48.49	-30.18	3314947.27	1356523.81	40.3065531	-104.3706982	2.00	
1023.00†	13.460	328.107	1016.83	64.55	66.81	-41.57	3314935.64	1356541.98	40.3066034	-104.3707391	2.00	
1123.00†	15.460	328.107	1113.65	85.03	88.01	-54.77	3314922.18	1356563.01	40.3066616	-104.3707864	2.00	
1223.00†	17.460	328.107	1209.55	108.28	112.06	-69.74	3314906.91	1356586.88	40.3067276	-104.3708400	2.00	
1323.00†	19.460	328.107	1304.40	134.25	138.95	-86.46	3314889.84	1356613.54	40.3068014	-104.3709000	2.00	
1423.00†	21.460	328.107	1398.09	162.92	168.62	-104.93	3314871.00	1356642.98	40.3068829	-104.3709662	2.00	
1523.00†	23.460	328.107	1490.50	194.26	201.06	-125.11	3314850.40	1356675.15	40.3069719	-104.3710386	2.00	
1623.00†	25.460	328.107	1581.52	228.22	236.21	-146.99	3314828.08	1356710.02	40.3070684	-104.3711170	2.00	
1723.00†	27.460	328.107	1671.04	264.77	274.04	-170.53	3314804.06	1356747.55	40.3071722	-104.3712014	2.00	
1823.00†	29.460	328.107	1758.95	303.86	314.50	-195.71	3314778.37	1356787.68	40.3072833	-104.3712917	2.00	
1894.50	30.890	328.107	1820.76	333.35	345.01	-214.69	3314759.00	1356817.95	40.3073670	-104.3713598	2.00	Build (XS)
1923.00†	30.890	328.107	1845.22	345.35	357.43	-222.42	3314751.11	1356830.27	40.3074011	-104.3713875	0.00	
2023.00†	30.890	328.107	1931.03	387.46	401.02	-249.55	3314723.44	1356873.51	40.3075208	-104.3714847	0.00	
2123.00†	30.890	328.107	2016.85	429.58	444.61	-276.67	3314695.76	1356916.75	40.3076404	-104.3715820	0.00	
2223.00†	30.890	328.107	2102.66	471.69	488.20	-303.80	3314668.09	1356959.98	40.3077601	-104.3716793	0.00	
2323.00†	30.890	328.107	2188.48	513.81	531.79	-330.92	3314640.41	1357003.22	40.3078797	-104.3717765	0.00	
2423.00†	30.890	328.107	2274.29	555.92	575.38	-358.04	3314612.73	1357046.46	40.3079994	-104.3718738	0.00	
2523.00†	30.890	328.107	2360.11	598.04	618.97	-385.17	3314585.06	1357089.70	40.3081190	-104.3719710	0.00	
2623.00†	30.890	328.107	2445.92	640.15	662.56	-412.29	3314557.38	1357132.94	40.3082387	-104.3720683	0.00	

Planned Wellpath Report

Flaherty 13-3-4 PWP Rev-A.0

Page 3 of 8

REFERENCE WELLPATH IDENTIFICATION

Operator	CONFLUENCE RESOURCES	Well	Flaherty 13-3-4
Field	WELD COUNTY (NAD83, TRUE NORTH)	API	0512347447
Facility	SEC.18-T04N-R62W	Wellbore	Flaherty 13-3-4 PWB
Slot	SLOT#20 Flaherty 13-3-4 (452'FSL & 1663'FWL,SEC.18)		

WELLPATH DATA (127 stations) † = interpolated, ‡ = extrapolated station

MD [ft]	Inclination [°]	Azimuth [°]	TVD [ft]	Vert Sect [ft]	North [ft]	East [ft]	Grid East [US ft]	Grid North [US ft]	Latitude	Longitude	DLS [°/100ft]	Comments
2723.00†	30.890	328.107	2531.74	682.27	706.15	-439.42	3314529.70	1357176.17	40.3083583	-104.3721655	0.00	
2823.00†	30.890	328.107	2617.55	724.38	749.74	-466.54	3314502.03	1357219.41	40.3084780	-104.3722628	0.00	
2923.00†	30.890	328.107	2703.37	766.50	793.32	-493.67	3314474.35	1357262.65	40.3085976	-104.3723601	0.00	
3023.00†	30.890	328.107	2789.18	808.61	836.91	-520.79	3314446.68	1357305.89	40.3087173	-104.3724573	0.00	
3123.00†	30.890	328.107	2875.00	850.73	880.50	-547.92	3314419.00	1357349.13	40.3088369	-104.3725546	0.00	
3223.00†	30.890	328.107	2960.82	892.84	924.09	-575.04	3314391.32	1357392.36	40.3089566	-104.3726518	0.00	
3323.00†	30.890	328.107	3046.63	934.96	967.68	-602.16	3314363.65	1357435.60	40.3090762	-104.3727491	0.00	
3423.00†	30.890	328.107	3132.45	977.07	1011.27	-629.29	3314335.97	1357478.84	40.3091959	-104.3728464	0.00	
3523.00†	30.890	328.107	3218.26	1019.19	1054.86	-656.41	3314308.30	1357522.08	40.3093155	-104.3729436	0.00	
3623.00†	30.890	328.107	3304.08	1061.30	1098.45	-683.54	3314280.62	1357565.32	40.3094351	-104.3730409	0.00	
3723.00†	30.890	328.107	3389.89	1103.42	1142.04	-710.66	3314252.94	1357608.55	40.3095548	-104.3731381	0.00	
3823.00†	30.890	328.107	3475.71	1145.53	1185.62	-737.79	3314225.27	1357651.79	40.3096744	-104.3732354	0.00	
3923.00†	30.890	328.107	3561.52	1187.65	1229.21	-764.91	3314197.59	1357695.03	40.3097941	-104.3733327	0.00	
4023.00†	30.890	328.107	3647.34	1229.76	1272.80	-792.03	3314169.92	1357738.27	40.3099137	-104.3734299	0.00	
4123.00†	30.890	328.107	3733.15	1271.88	1316.39	-819.16	3314142.24	1357781.51	40.3100334	-104.3735272	0.00	
4223.00†	30.890	328.107	3818.97	1313.99	1359.98	-846.28	3314114.56	1357824.74	40.3101530	-104.3736244	0.00	
4323.00†	30.890	328.107	3904.78	1356.11	1403.57	-873.41	3314086.89	1357867.98	40.3102727	-104.3737217	0.00	
4423.00†	30.890	328.107	3990.60	1398.22	1447.16	-900.53	3314059.21	1357911.22	40.3103923	-104.3738190	0.00	
4523.00†	30.890	328.107	4076.42	1440.34	1490.75	-927.66	3314031.54	1357954.46	40.3105120	-104.3739162	0.00	
4623.00†	30.890	328.107	4162.23	1482.45	1534.34	-954.78	3314003.86	1357997.70	40.3106316	-104.3740135	0.00	
4723.00†	30.890	328.107	4248.05	1524.57	1577.92	-981.90	3313976.18	1358040.93	40.3107513	-104.3741108	0.00	
4823.00†	30.890	328.107	4333.86	1566.68	1621.51	-1009.03	3313948.51	1358084.17	40.3108709	-104.3742080	0.00	
4923.00†	30.890	328.107	4419.68	1608.80	1665.10	-1036.15	3313920.83	1358127.41	40.3109906	-104.3743053	0.00	
5023.00†	30.890	328.107	4505.49	1650.91	1708.69	-1063.28	3313893.16	1358170.65	40.3111102	-104.3744026	0.00	
5123.00†	30.890	328.107	4591.31	1693.03	1752.28	-1090.40	3313865.48	1358213.89	40.3112298	-104.3744998	0.00	
5223.00†	30.890	328.107	4677.12	1735.14	1795.87	-1117.53	3313837.80	1358257.12	40.3113495	-104.3745971	0.00	
5323.00†	30.890	328.107	4762.94	1777.26	1839.46	-1144.65	3313810.13	1358300.36	40.3114691	-104.3746944	0.00	
5423.00†	30.890	328.107	4848.75	1819.37	1883.05	-1171.77	3313782.45	1358343.60	40.3115888	-104.3747916	0.00	
5523.00†	30.890	328.107	4934.57	1861.49	1926.64	-1198.90	3313754.78	1358386.84	40.3117084	-104.3748889	0.00	
5623.00†	30.890	328.107	5020.38	1903.60	1970.23	-1226.02	3313727.10	1358430.08	40.3118281	-104.3749862	0.00	

Planned Wellpath Report

Flaherty 13-3-4 PWP Rev-A.0

Page 4 of 8

REFERENCE WELLPATH IDENTIFICATION

Operator	CONFLUENCE RESOURCES	Well	Flaherty 13-3-4
Field	WELD COUNTY (NAD83, TRUE NORTH)	API	0512347447
Facility	SEC.18-T04N-R62W	Wellbore	Flaherty 13-3-4 PWB
Slot	SLOT#20 Flaherty 13-3-4 (452'FSL & 1663'FWL,SEC.18)		

WELLPATH DATA (127 stations) † = interpolated, ‡ = extrapolated station

MD [ft]	Inclination [°]	Azimuth [°]	TVD [ft]	Vert Sect [ft]	North [ft]	East [ft]	Grid East [US ft]	Grid North [US ft]	Latitude	Longitude	DLS [°/100ft]	Comments
5723.00†	30.890	328.107	5106.20	1945.72	2013.81	-1253.15	3313699.42	1358473.31	40.3119477	-104.3750834	0.00	
5823.00†	30.890	328.107	5192.01	1987.83	2057.40	-1280.27	3313671.75	1358516.55	40.3120674	-104.3751807	0.00	
5923.00†	30.890	328.107	5277.83	2029.95	2100.99	-1307.40	3313644.07	1358559.79	40.3121870	-104.3752780	0.00	
6023.00†	30.890	328.107	5363.65	2072.06	2144.58	-1334.52	3313616.40	1358603.03	40.3123067	-104.3753752	0.00	
6123.00†	30.890	328.107	5449.46	2114.18	2188.17	-1361.64	3313588.72	1358646.27	40.3124263	-104.3754725	0.00	
6223.00†	30.890	328.107	5535.28	2156.29	2231.76	-1388.77	3313561.04	1358689.50	40.3125459	-104.3755698	0.00	
6323.00†	30.890	328.107	5621.09	2198.41	2275.35	-1415.89	3313533.37	1358732.74	40.3126656	-104.3756670	0.00	
6423.00†	30.890	328.107	5706.91	2240.52	2318.94	-1443.02	3313505.69	1358775.98	40.3127852	-104.3757643	0.00	
6523.00†	30.890	328.107	5792.72	2282.64	2362.53	-1470.14	3313478.02	1358819.22	40.3129049	-104.3758616	0.00	
6623.00†	30.890	328.107	5878.54	2324.75	2406.11	-1497.27	3313450.34	1358862.46	40.3130245	-104.3759589	0.00	
6723.00†	30.890	328.107	5964.35	2366.87	2449.70	-1524.39	3313422.66	1358905.69	40.3131442	-104.3760561	0.00	
6823.00†	30.890	328.107	6050.17	2408.98	2493.29	-1551.52	3313394.99	1358948.93	40.3132638	-104.3761534	0.00	
6845.58	30.890	328.107	6069.54	2418.49	2503.13	-1557.64	3313388.74	1358958.69	40.3132908	-104.3761754	0.00	KOP
6923.00†	34.777	317.414	6134.64	2454.98	2536.31	-1583.11	3313362.85	1358991.54	40.3133819	-104.3762667	9.00	
7023.00†	40.886	306.597	6213.67	2512.95	2576.90	-1628.78	3313316.67	1359031.54	40.3134933	-104.3764305	9.00	
7123.00†	47.775	298.285	6285.22	2581.82	2614.03	-1687.78	3313257.20	1359067.92	40.3135952	-104.3766421	9.00	
7223.00†	55.144	291.664	6347.53	2659.87	2646.79	-1758.66	3313185.91	1359099.77	40.3136851	-104.3768962	9.00	
7323.00†	62.811	286.155	6399.06	2745.20	2674.37	-1839.68	3313104.55	1359126.31	40.3137608	-104.3771867	9.00	
7423.00†	70.666	281.367	6438.54	2835.70	2696.08	-1928.84	3313015.13	1359146.89	40.3138204	-104.3775065	9.00	
7523.00†	78.634	277.023	6465.00	2929.14	2711.41	-2023.94	3312919.84	1359161.00	40.3138624	-104.3778475	9.00	
7623.00†	86.662	272.917	6477.79	3023.21	2719.96	-2122.65	3312821.04	1359168.30	40.3138859	-104.3782014	9.00	
7664.49	90.000	271.243	6479.00†	3061.89	2721.46	-2164.08	3312779.59	1359169.27	40.3138900	-104.3783500	9.00	LANDING
7723.00†	90.000	271.243	6479.00	3116.14	2722.73	-2222.58	3312721.08	1359169.80	40.3138935	-104.3785598	0.00	
7823.00†	90.000	271.243	6479.00	3208.87	2724.90	-2322.56	3312621.09	1359170.69	40.3138994	-104.3789183	0.00	
7923.00†	90.000	271.243	6479.00	3301.61	2727.07	-2422.53	3312521.10	1359171.59	40.3139053	-104.3792768	0.00	
8023.00†	90.000	271.243	6479.00	3394.34	2729.24	-2522.51	3312421.11	1359172.49	40.3139113	-104.3796353	0.00	
8123.00†	90.000	271.243	6479.00	3487.07	2731.41	-2622.49	3312321.12	1359173.38	40.3139172	-104.3799938	0.00	
8223.00†	90.000	271.243	6479.00	3579.80	2733.58	-2722.46	3312221.13	1359174.28	40.3139231	-104.3803523	0.00	
8323.00†	90.000	271.243	6479.00	3672.53	2735.75	-2822.44	3312121.13	1359175.17	40.3139290	-104.3807108	0.00	
8423.00†	90.000	271.243	6479.00	3765.26	2737.92	-2922.42	3312021.14	1359176.07	40.3139350	-104.3810693	0.00	

Planned Wellpath Report

Flaherty 13-3-4 PWP Rev-A.0

Page 5 of 8

REFERENCE WELLPATH IDENTIFICATION

Operator	CONFLUENCE RESOURCES	Well	Flaherty 13-3-4
Field	WELD COUNTY (NAD83, TRUE NORTH)	API	0512347447
Facility	SEC.18-T04N-R62W	Wellbore	Flaherty 13-3-4 PWB
Slot	SLOT#20 Flaherty 13-3-4 (452'FSL & 1663'FWL,SEC.18)		

WELLPATH DATA (127 stations) † = interpolated, ‡ = extrapolated station

MD [ft]	Inclination [°]	Azimuth [°]	TVD [ft]	Vert Sect [ft]	North [ft]	East [ft]	Grid East [US ft]	Grid North [US ft]	Latitude	Longitude	DLS [°/100ft]	Comments
8523.00†	90.000	271.243	6479.00	3857.99	2740.09	-3022.39	3311921.15	1359176.97	40.3139409	-104.3814277	0.00	
8623.00†	90.000	271.243	6479.00	3950.72	2742.26	-3122.37	3311821.16	1359177.86	40.3139468	-104.3817862	0.00	
8723.00†	90.000	271.243	6479.00	4043.45	2744.43	-3222.35	3311721.17	1359178.76	40.3139527	-104.3821447	0.00	
8823.00†	90.000	271.243	6479.00	4136.18	2746.60	-3322.32	3311621.18	1359179.65	40.3139586	-104.3825032	0.00	
8923.00†	90.000	271.243	6479.00	4228.91	2748.77	-3422.30	3311521.19	1359180.55	40.3139646	-104.3828617	0.00	
9023.00†	90.000	271.243	6479.00	4321.64	2750.94	-3522.27	3311421.19	1359181.45	40.3139705	-104.3832202	0.00	
9123.00†	90.000	271.243	6479.00	4414.37	2753.11	-3622.25	3311321.20	1359182.34	40.3139764	-104.3835787	0.00	
9223.00†	90.000	271.243	6479.00	4507.10	2755.28	-3722.23	3311221.21	1359183.24	40.3139823	-104.3839372	0.00	
9323.00†	90.000	271.243	6479.00	4599.83	2757.45	-3822.20	3311121.22	1359184.13	40.3139882	-104.3842957	0.00	
9423.00†	90.000	271.243	6479.00	4692.56	2759.62	-3922.18	3311021.23	1359185.03	40.3139941	-104.3846542	0.00	
9523.00†	90.000	271.243	6479.00	4785.30	2761.79	-4022.16	3310921.24	1359185.93	40.3140000	-104.3850127	0.00	
9623.00†	90.000	271.243	6479.00	4878.03	2763.95	-4122.13	3310821.25	1359186.82	40.3140060	-104.3853712	0.00	
9723.00†	90.000	271.243	6479.00	4970.76	2766.12	-4222.11	3310721.25	1359187.72	40.3140119	-104.3857297	0.00	
9823.00†	90.000	271.243	6479.00	5063.49	2768.29	-4322.09	3310621.26	1359188.61	40.3140178	-104.3860882	0.00	
9923.00†	90.000	271.243	6479.00	5156.22	2770.46	-4422.06	3310521.27	1359189.51	40.3140237	-104.3864467	0.00	
10023.00†	90.000	271.243	6479.00	5248.95	2772.63	-4522.04	3310421.28	1359190.41	40.3140296	-104.3868052	0.00	
10123.00†	90.000	271.243	6479.00	5341.68	2774.80	-4622.02	3310321.29	1359191.30	40.3140355	-104.3871637	0.00	
10223.00†	90.000	271.243	6479.00	5434.41	2776.97	-4721.99	3310221.30	1359192.20	40.3140414	-104.3875222	0.00	
10323.00†	90.000	271.243	6479.00	5527.14	2779.14	-4821.97	3310121.30	1359193.09	40.3140473	-104.3878807	0.00	
10423.00†	90.000	271.243	6479.00	5619.87	2781.31	-4921.94	3310021.31	1359193.99	40.3140532	-104.3882392	0.00	
10523.00†	90.000	271.243	6479.00	5712.60	2783.48	-5021.92	3309921.32	1359194.89	40.3140591	-104.3885977	0.00	
10623.00†	90.000	271.243	6479.00	5805.33	2785.65	-5121.90	3309821.33	1359195.78	40.3140650	-104.3889562	0.00	
10723.00†	90.000	271.243	6479.00	5898.06	2787.82	-5221.87	3309721.34	1359196.68	40.3140709	-104.3893147	0.00	
10823.00†	90.000	271.243	6479.00	5990.79	2789.99	-5321.85	3309621.35	1359197.57	40.3140768	-104.3896732	0.00	
10923.00†	90.000	271.243	6479.00	6083.52	2792.16	-5421.83	3309521.36	1359198.47	40.3140827	-104.3900317	0.00	
11023.00†	90.000	271.243	6479.00	6176.25	2794.33	-5521.80	3309421.36	1359199.37	40.3140886	-104.3903902	0.00	
11123.00†	90.000	271.243	6479.00	6268.99	2796.50	-5621.78	3309321.37	1359200.26	40.3140945	-104.3907487	0.00	
11223.00†	90.000	271.243	6479.00	6361.72	2798.67	-5721.76	3309221.38	1359201.16	40.3141004	-104.3911072	0.00	
11323.00†	90.000	271.243	6479.00	6454.45	2800.84	-5821.73	3309121.39	1359202.05	40.3141063	-104.3914657	0.00	
11423.00†	90.000	271.243	6479.00	6547.18	2803.01	-5921.71	3309021.40	1359202.95	40.3141121	-104.3918242	0.00	

Planned Wellpath Report

Flaherty 13-3-4 PWP Rev-A.0

Page 6 of 8

REFERENCE WELLPATH IDENTIFICATION

Operator	CONFLUENCE RESOURCES	Well	Flaherty 13-3-4
Field	WELD COUNTY (NAD83, TRUE NORTH)	API	0512347447
Facility	SEC.18-T04N-R62W	Wellbore	Flaherty 13-3-4 PWB
Slot	SLOT#20 Flaherty 13-3-4 (452'FSL & 1663'FWL,SEC.18)		

WELLPATH DATA (127 stations) † = interpolated, ‡ = extrapolated station

MD [ft]	Inclination [°]	Azimuth [°]	TVD [ft]	Vert Sect [ft]	North [ft]	East [ft]	Grid East [US ft]	Grid North [US ft]	Latitude	Longitude	DLS [°/100ft]	Comments
11523.00†	90.000	271.243	6479.00	6639.91	2805.18	-6021.69	3308921.41	1359203.85	40.3141180	-104.3921827	0.00	
11623.00†	90.000	271.243	6479.00	6732.64	2807.35	-6121.66	3308821.41	1359204.74	40.3141239	-104.3925412	0.00	
11723.00†	90.000	271.243	6479.00	6825.37	2809.52	-6221.64	3308721.42	1359205.64	40.3141298	-104.3928997	0.00	
11823.00†	90.000	271.243	6479.00	6918.10	2811.68	-6321.62	3308621.43	1359206.53	40.3141357	-104.3932582	0.00	
11923.00†	90.000	271.243	6479.00	7010.83	2813.85	-6421.59	3308521.44	1359207.43	40.3141416	-104.3936167	0.00	
12023.00†	90.000	271.243	6479.00	7103.56	2816.02	-6521.57	3308421.45	1359208.33	40.3141475	-104.3939752	0.00	
12066.17	90.000	271.243	6479.00 [‡]	7143.59	2816.96	-6564.73	3308378.28	1359208.71	40.3141500	-104.3941300	0.00	TD

HOLE & CASING SECTIONS - Ref Wellbore: Flaherty 13-3-4 PWB Ref Wellpath: Flaherty 13-3-4 PWP Rev-A.0

String/Diameter	Start MD [ft]	End MD [ft]	Interval [ft]	Start TVD [ft]	End TVD [ft]	Start N/S [ft]	Start E/W [ft]	End N/S [ft]	End E/W [ft]
9.625in Casing Surface	23.00	1699.34	1676.34	23.00	1650.00	0.00	0.00	264.85	-164.81

REFERENCE WELLPATH IDENTIFICATION

Operator	CONFLUENCE RESOURCES	Well	Flaherty 13-3-4
Field	WELD COUNTY (NAD83, TRUE NORTH)	API	0512347447
Facility	SEC.18-T04N-R62W	Wellbore	Flaherty 13-3-4 PWB
Slot	SLOT#20 Flaherty 13-3-4 (452'FSL & 1663'FWL,SEC.18)		

TARGETS

Name	MD [ft]	TVD [ft]	North [ft]	East [ft]	Grid East [US ft]	Grid North [US ft]	Latitude	Longitude	Shape
SEC.13-T04N-R63W	N/A	0.00	-247.73	2.79	3314984.00	1356228.05	40.3057400	-104.3705800	polygon
2D Polygon: dimensions not calculated									
SEC.13-T04N-R63W (SB 470')	N/A	0.00	-247.73	2.79	3314984.00	1356228.05	40.3057400	-104.3705800	polygon
2D Polygon: dimensions not calculated									
2) Flaherty 13-3-4 BHL REV-1 (2128'FNL & 470'FWL,SEC.13)	12066.17	6479.00	2816.96	-6564.73	3308378.28	1359208.71	40.3141500	-104.3941300	point
1) Flaherty 13-3-4 LP REV-1 (2127'FNL & 470'FEL,SEC.13)	7664.49	6479.00	2721.46	-2164.08	3312779.59	1359169.27	40.3138900	-104.3783500	point

SURVEY PROGRAM - Ref Wellbore: Flaherty 13-3-4 PWB Ref Wellpath: Flaherty 13-3-4 PWP Rev-A.0

Start MD [ft]	End MD [ft]	Positional Uncertainty Model	Log Name/Comment	Wellbore
23.00	1699.34	BH NaviTrak (2019) (Axial)		Flaherty 13-3-4 PWB
1699.34	12088.02	BH AutoTrak Curve/eXpress (2019) (Short spacing)		Flaherty 13-3-4 PWB

Planned Wellpath Report

Flaherty 13-3-4 PWP Rev-A.0

Page 8 of 8

REFERENCE WELLPATH IDENTIFICATION

Operator	CONFLUENCE RESOURCES	Well	Flaherty 13-3-4
Field	WELD COUNTY (NAD83, TRUE NORTH)	API	0512347447
Facility	SEC.18-T04N-R62W	Wellbore	Flaherty 13-3-4 PWB
Slot	SLOT#20 Flaherty 13-3-4 (452'FSL & 1663'FWL,SEC.18)		

DESIGN COMMENTS

MD [ft]	Inclination [°]	Azimuth [°]	TVD [ft]	Comment
23.00	0.000	328.107	23.00	Tie On
350.00	0.000	328.107	350.00	End of Tangent
1894.50	30.890	328.107	1820.76	Build (XS)
6845.58	30.890	328.107	6069.54	KOP
7664.49	90.000	271.243	6479.00	LANDING
12066.17	90.000	271.243	6479.00	TD