

# CONFLUENCE RESOURCES



Location: COLORADO Slot: SLOT#09 Middlepark 18-9-2 (359°FSL & 1543°FWL, SEC.18)  
 Field: WELD COUNTY (NAD83, TRUE NORTH) Well: Middlepark 18-9-2  
 Facility: SEC.18-T04N-R62W Wellbore: Middlepark 18-9-2 PWB

Plot reference wellpath is Middlepark 18-9-2 PWP Rev-A.0  
 True vertical depths are referenced to Rig (23) (KB)  
 Reference wellpath measured depths are referenced to Rig (23) (KB)  
 Rig (23) (KB) to Mean Sea Level: 4586 feet  
 Mean Sea Level to Mud line (At Slot: SLOT#09 Middlepark 18-9-2 (359°FSL & 1543°FWL, SEC.18)): 0 feet  
 Offset wellpath MDs are referenced to each path's default MD datum  
 Created by: painstr on 2021-12-01; Database: WellArchitectDB

### Location Information

Facility Name	Grid East (US ft)	Grid North (US ft)	Latitude	Longitude
SEC.18-T04N-R62W	3314967.040	1356246.051	40.3057900°	-104.3706400°
Slot	Local N (ft)	Local E (ft)	Grid East (US ft)	Grid North (US ft)
SLOT#09 Middlepark 18-9-2 (359°FSL & 1543°FWL, SEC.18)	138.44	-105.99	3314859.305	1356383.121
Rig (23) (KB) to Mud line (At Slot: SLOT#09 Middlepark 18-9-2 (359°FSL & 1543°FWL, SEC.18))				4586ft
Mean Sea Level to Mud line (At Slot: SLOT#09 Middlepark 18-9-2 (359°FSL & 1543°FWL, SEC.18))				0ft
Rig (23) (KB) to Mean Sea Level				4586ft

### Hole and Casing Sections

Name	Start MD (ft)	End MD (ft)	Interval (ft)	Start TVD (ft)	End TVD (ft)	Start Local N (ft)	Start Local E (ft)	End Local N (ft)	End Local E (ft)	Wellbore
9.625in Casing Surface	23.00	1662.31	1639.31	23.00	1650.00	0.00	0.00	-118.61	130.99	Middlepark 18-9-2 PWB

### Survey Program

Start MD (ft)	End MD (ft)	Tool	Model	Log Name/Comment	Wellbore
23.00	1662.31	BH Navitrak (2019)	BH Navitrak (2019) (Axial)		Middlepark 18-9-2 PWB
1662.31	11136.84	BH AutoTrak Curve/Xpress (2019)	BH AutoTrak Curve/Xpress (2019) (Short spacing)		Middlepark 18-9-2 PWB

### Bottom Hole Location

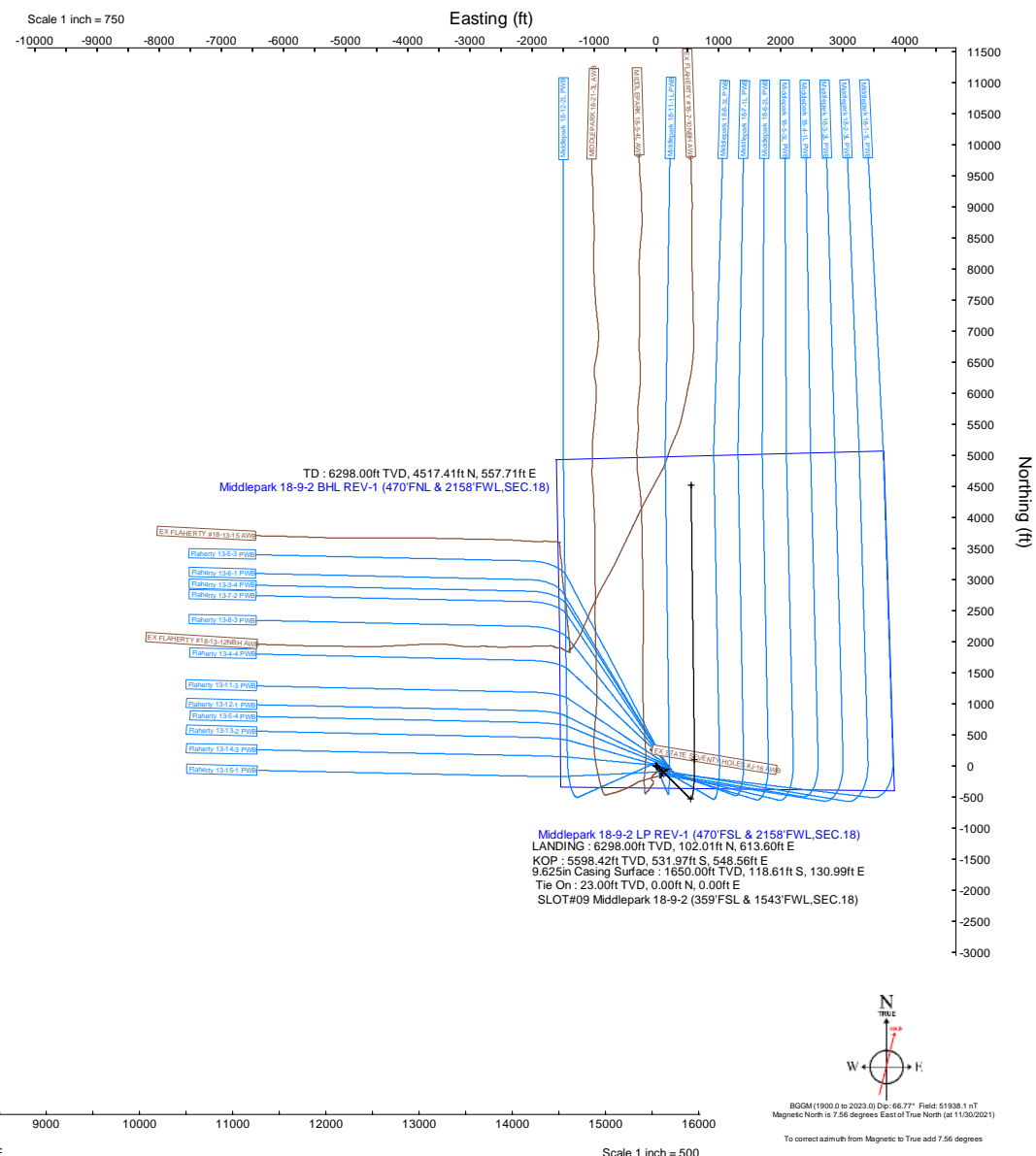
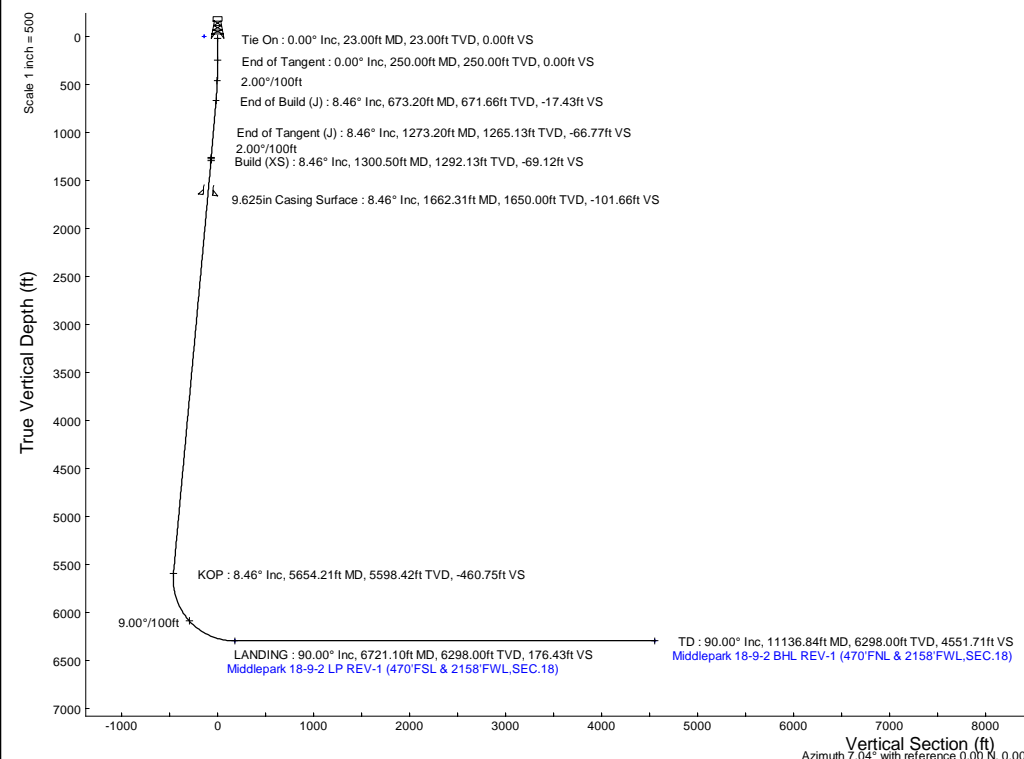
MD (ft)	Inc (°)	Az (°)	TVD (ft)	Local N (ft)	Local E (ft)	Grid East (US ft)	Grid North (US ft)	Latitude	Longitude
11136.84	90.000	359.275	6298.00	4517.41	557.71	3315359.44	1360907.06	40.3185700°	-104.3690200°

### Targets

Name	MD (ft)	TVD (ft)	Local N (ft)	Local E (ft)	Grid East (US ft)	Grid North (US ft)	Latitude	Longitude
SEC.18-T04N-R62W	N/A	0.00	-156.65	122.72	3314984.00	1356228.05	40.3057400°	-104.3705800°
Middlepark 18-9-2 BHL REV-1 (470°FNL & 2158°FWL, SEC.18)	11136.84	6298.00	4517.41	557.71	3315359.44	1360907.06	40.3185700°	-104.3690200°
Middlepark 18-9-2 LP REV-1 (470°FSL & 2158°FWL, SEC.18)	6721.10	6298.00	102.01	613.60	3315471.52	1356492.93	40.3064500°	-104.3688200°

### Well Profile Data

Design Comment	MD (ft)	Inc (°)	Az (°)	TVD (ft)	Local N (ft)	Local E (ft)	DLS (°/100ft)	VS (ft)
Tie On	23.00	0.000	131.000	23.00	0.00	0.00	0.00	0.00
End of Tangent	250.00	0.000	131.000	250.00	0.00	0.00	0.00	0.00
End of Build (J)	673.20	8.464	131.000	671.66	-20.47	23.55	2.00	-17.43
End of Tangent (J)	1273.20	8.464	131.000	1265.13	-78.41	90.20	0.00	-66.77
Build (XS)	1300.50	8.464	134.710	1292.13	-81.14	93.14	2.00	-69.12
KOP	5654.21	8.464	134.710	5598.42	-531.97	548.56	0.00	-460.75
LANDING	6721.10	90.000	359.275	6298.00	102.01	613.60	9.00	176.43
TD	11136.84	90.000	359.275	6298.00	4517.41	557.71	0.00	4551.71



BGM(1900.0 to 2023.0) Dip: 66.77° Field: 51938.1 mT  
 Magnetic North is 7.56 degrees East of True North (at 11/30/2021)  
 To correct azimuth from Magnetic to True add 7.56 degrees



# Planned Wellpath Report

Middlepark 18-9-2 PWP Rev-A.0

Page 1 of 6



REFERENCE WELLPATH IDENTIFICATION			
Operator	CONFLUENCE RESOURCES	Well	Middlepark 18-9-2
Field	WELD COUNTY (NAD83, TRUE NORTH)	API	0512347441
Facility	SEC.18-T04N-R62W	Wellbore	Middlepark 18-9-2 PWB
Slot	SLOT#09 Middlepark 18-9-2 (359'FSL & 1543'FWL,SEC.18)		

REPORT SETUP INFORMATION			
Projection System	NAD83 / Lambert Colorado SP, Northern Zone (501), US feet	Software System	WellArchitect® 6.0
North Reference	True	User	Painsetr
Scale	0.999957	Report Generated	12/1/2021 at 8:43:10 PM
Convergence at slot	0.73° East	Database	WellArchitectDB

WELLPATH LOCATION						
	Local coordinates		Grid coordinates		Geographic coordinates	
	North[ft]	East[ft]	Easting[US ft]	Northing[US ft]	Latitude	Longitude
Slot Location	138.44	-105.99	3314859.31	1356383.12	40.3061700°	-104.3710200°
Facility Reference Pt			3314967.04	1356246.05	40.3057900°	-104.3706400°
Field Reference Pt			3230456.90	1245096.09	40.0032400°	-104.6773400°

WELLPATH DATUM			
Calculation method	Minimum curvature	Rig (23') (KB) to Facility Vertical Datum	4586.00ft
Horizontal Reference Pt	Slot	Rig (23') (KB) to Mean Sea Level	4586.00ft
Vertical Reference Pt	Rig (23') (KB)	Rig (23') (KB) to Mud Line at Slot (SLOT#09 Middlepark 18-9-2 (359'FSL & 1543'FWL,SEC.18))	4586.00ft
MD Reference Pt	Rig (23') (KB)	Section Origin	N 0.00, E 0.00 ft
Field Vertical Reference	Mean Sea Level	Section Azimuth	7.04°

# Planned Wellpath Report

Middlepark 18-9-2 PWP Rev-A.0

Page 2 of 6

REFERENCE WELLPATH IDENTIFICATION				
Operator	CONFLUENCE RESOURCES		Well	Middlepark 18-9-2
Field	WELD COUNTY (NAD83, TRUE NORTH)		API	0512347441
Facility	SEC.18-T04N-R62W		Wellbore	Middlepark 18-9-2 PWB
Slot	SLOT#09 Middlepark 18-9-2 (359'FSL & 1543'FWL,SEC.18)			

WELLPATH DATA (120 stations) † = interpolated, ‡ = extrapolated station												
MD [ft]	Inclination [°]	Azimuth [°]	TVD [ft]	Vert Sect [ft]	North [ft]	East [ft]	Grid East [US ft]	Grid North [US ft]	Latitude	Longitude	DLS [°/100ft]	Comments
0.00†	0.000	131.000	0.00	0.00	0.00	0.00	3314859.31	1356383.12	40.3061700	-104.3710200	0.00	
23.00	0.000	131.000	23.00	0.00	0.00	0.00	3314859.31	1356383.12	40.3061700	-104.3710200	0.00	Tie On
123.00†	0.000	131.000	123.00	0.00	0.00	0.00	3314859.31	1356383.12	40.3061700	-104.3710200	0.00	
223.00†	0.000	131.000	223.00	0.00	0.00	0.00	3314859.31	1356383.12	40.3061700	-104.3710200	0.00	
250.00	0.000	131.000	250.00	0.00	0.00	0.00	3314859.31	1356383.12	40.3061700	-104.3710200	0.00	End of Tangent
323.00†	1.460	131.000	322.99	-0.52	-0.61	0.70	3314860.01	1356382.52	40.3061683	-104.3710175	2.00	
423.00†	3.460	131.000	422.89	-2.92	-3.43	3.94	3314863.29	1356379.75	40.3061606	-104.3710059	2.00	
523.00†	5.460	131.000	522.59	-7.26	-8.53	9.81	3314869.22	1356374.72	40.3061466	-104.3709848	2.00	
623.00†	7.460	131.000	621.95	-13.55	-15.91	18.30	3314877.81	1356367.45	40.3061263	-104.3709544	2.00	
673.20	8.464	131.000	671.66	-17.43	-20.47	23.55	3314883.11	1356362.95	40.3061138	-104.3709356	2.00	End of Build (J)
723.00†	8.464	131.000	720.92	-21.53	-25.28	29.08	3314888.70	1356358.22	40.3061006	-104.3709157	0.00	
823.00†	8.464	131.000	819.83	-29.75	-34.94	40.19	3314899.93	1356348.70	40.3060741	-104.3708759	0.00	
923.00†	8.464	131.000	918.74	-37.97	-44.59	51.30	3314911.16	1356339.19	40.3060476	-104.3708361	0.00	
1023.00†	8.464	131.000	1017.65	-46.19	-54.25	62.41	3314922.39	1356329.67	40.3060211	-104.3707963	0.00	
1123.00†	8.464	131.000	1116.56	-54.42	-63.90	73.51	3314933.62	1356320.16	40.3059946	-104.3707564	0.00	
1223.00†	8.464	131.000	1215.47	-62.64	-73.56	84.62	3314944.85	1356310.65	40.3059681	-104.3707166	0.00	
1273.20	8.464	131.000	1265.13	-66.77	-78.41	90.20	3314950.49	1356305.87	40.3059548	-104.3706966	0.00	End of Tangent (J)
1300.50	8.464	134.710	1292.13	-69.12	-81.14	93.14	3314953.47	1356303.18	40.3059473	-104.3706860	2.00	Build (XS)
1323.00†	8.464	134.710	1314.39	-71.14	-83.47	95.50	3314955.85	1356300.88	40.3059409	-104.3706776	0.00	
1423.00†	8.464	134.710	1413.30	-80.14	-93.83	105.96	3314966.44	1356290.66	40.3059125	-104.3706401	0.00	
1523.00†	8.464	134.710	1512.21	-89.13	-104.18	116.42	3314977.03	1356280.44	40.3058840	-104.3706026	0.00	
1623.00†	8.464	134.710	1611.12	-98.13	-114.54	126.88	3314987.63	1356270.22	40.3058556	-104.3705651	0.00	
1723.00†	8.464	134.710	1710.03	-107.12	-124.89	137.34	3314998.22	1356259.99	40.3058272	-104.3705276	0.00	
1823.00†	8.464	134.710	1808.94	-116.12	-135.25	147.80	3315008.81	1356249.77	40.3057988	-104.3704901	0.00	
1923.00†	8.464	134.710	1907.85	-125.11	-145.60	158.26	3315019.40	1356239.55	40.3057703	-104.3704526	0.00	
2023.00†	8.464	134.710	2006.76	-134.11	-155.96	168.72	3315029.99	1356229.33	40.3057419	-104.3704151	0.00	
2123.00†	8.464	134.710	2105.67	-143.10	-166.31	179.18	3315040.58	1356219.11	40.3057135	-104.3703776	0.00	
2223.00†	8.464	134.710	2204.58	-152.10	-176.67	189.64	3315051.17	1356208.89	40.3056851	-104.3703401	0.00	
2323.00†	8.464	134.710	2303.49	-161.09	-187.02	200.10	3315061.76	1356198.67	40.3056566	-104.3703026	0.00	
2423.00†	8.464	134.710	2402.40	-170.09	-197.38	210.56	3315072.35	1356188.45	40.3056282	-104.3702651	0.00	

REFERENCE WELLPATH IDENTIFICATION				
Operator	CONFLUENCE RESOURCES		Well	Middlepark 18-9-2
Field	WELD COUNTY (NAD83, TRUE NORTH)		API	0512347441
Facility	SEC.18-T04N-R62W		Wellbore	Middlepark 18-9-2 PWB
Slot	SLOT#09 Middlepark 18-9-2 (359'FSL & 1543'FWL,SEC.18)			

WELLPATH DATA (120 stations) † = interpolated, ‡ = extrapolated station												
MD [ft]	Inclination [°]	Azimuth [°]	TVD [ft]	Vert Sect [ft]	North [ft]	East [ft]	Grid East [US ft]	Grid North [US ft]	Latitude	Longitude	DLS [°/100ft]	Comments
2523.00†	8.464	134.710	2501.32	-179.08	-207.73	221.02	3315082.94	1356178.23	40.3055998	-104.3702276	0.00	
2623.00†	8.464	134.710	2600.23	-188.08	-218.09	231.48	3315093.53	1356168.01	40.3055714	-104.3701900	0.00	
2723.00†	8.464	134.710	2699.14	-197.07	-228.44	241.94	3315104.13	1356157.79	40.3055429	-104.3701525	0.00	
2823.00†	8.464	134.710	2798.05	-206.07	-238.80	252.40	3315114.72	1356147.57	40.3055145	-104.3701150	0.00	
2923.00†	8.464	134.710	2896.96	-215.07	-249.15	262.86	3315125.31	1356137.35	40.3054861	-104.3700775	0.00	
3023.00†	8.464	134.710	2995.87	-224.06	-259.51	273.32	3315135.90	1356127.13	40.3054577	-104.3700400	0.00	
3123.00†	8.464	134.710	3094.78	-233.06	-269.86	283.78	3315146.49	1356116.91	40.3054292	-104.3700025	0.00	
3223.00†	8.464	134.710	3193.69	-242.05	-280.22	294.25	3315157.08	1356106.69	40.3054008	-104.3699650	0.00	
3323.00†	8.464	134.710	3292.60	-251.05	-290.57	304.71	3315167.67	1356096.46	40.3053724	-104.3699275	0.00	
3423.00†	8.464	134.710	3391.51	-260.04	-300.93	315.17	3315178.26	1356086.24	40.3053440	-104.3698900	0.00	
3523.00†	8.464	134.710	3490.42	-269.04	-311.28	325.63	3315188.85	1356076.02	40.3053155	-104.3698525	0.00	
3623.00†	8.464	134.710	3589.33	-278.03	-321.64	336.09	3315199.44	1356065.80	40.3052871	-104.3698150	0.00	
3723.00†	8.464	134.710	3688.25	-287.03	-331.99	346.55	3315210.04	1356055.58	40.3052587	-104.3697775	0.00	
3823.00†	8.464	134.710	3787.16	-296.02	-342.35	357.01	3315220.63	1356045.36	40.3052303	-104.3697400	0.00	
3923.00†	8.464	134.710	3886.07	-305.02	-352.70	367.47	3315231.22	1356035.14	40.3052018	-104.3697025	0.00	
4023.00†	8.464	134.710	3984.98	-314.01	-363.06	377.93	3315241.81	1356024.92	40.3051734	-104.3696650	0.00	
4123.00†	8.464	134.710	4083.89	-323.01	-373.41	388.39	3315252.40	1356014.70	40.3051450	-104.3696275	0.00	
4223.00†	8.464	134.710	4182.80	-332.00	-383.77	398.85	3315262.99	1356004.48	40.3051166	-104.3695900	0.00	
4323.00†	8.464	134.710	4281.71	-341.00	-394.12	409.31	3315273.58	1355994.26	40.3050881	-104.3695525	0.00	
4423.00†	8.464	134.710	4380.62	-350.00	-404.48	419.77	3315284.17	1355984.04	40.3050597	-104.3695150	0.00	
4523.00†	8.464	134.710	4479.53	-358.99	-414.83	430.23	3315294.76	1355973.82	40.3050313	-104.3694775	0.00	
4623.00†	8.464	134.710	4578.44	-367.99	-425.19	440.69	3315305.35	1355963.60	40.3050029	-104.3694400	0.00	
4723.00†	8.464	134.710	4677.35	-376.98	-435.54	451.15	3315315.95	1355953.38	40.3049744	-104.3694025	0.00	
4823.00†	8.464	134.710	4776.26	-385.98	-445.90	461.61	3315326.54	1355943.16	40.3049460	-104.3693650	0.00	
4923.00†	8.464	134.710	4875.18	-394.97	-456.25	472.07	3315337.13	1355932.94	40.3049176	-104.3693275	0.00	
5023.00†	8.464	134.710	4974.09	-403.97	-466.61	482.53	3315347.72	1355922.71	40.3048892	-104.3692900	0.00	
5123.00†	8.464	134.710	5073.00	-412.96	-476.96	492.99	3315358.31	1355912.49	40.3048608	-104.3692524	0.00	
5223.00†	8.464	134.710	5171.91	-421.96	-487.32	503.45	3315368.90	1355902.27	40.3048323	-104.3692149	0.00	
5323.00†	8.464	134.710	5270.82	-430.95	-497.67	513.92	3315379.49	1355892.05	40.3048039	-104.3691774	0.00	
5423.00†	8.464	134.710	5369.73	-439.95	-508.03	524.38	3315390.08	1355881.83	40.3047755	-104.3691399	0.00	



# Planned Wellpath Report

Middlepark 18-9-2 PWP Rev-A.0

Page 4 of 6



REFERENCE WELLPATH IDENTIFICATION			
Operator	CONFLUENCE RESOURCES	Well	Middlepark 18-9-2
Field	WELD COUNTY (NAD83, TRUE NORTH)	API	0512347441
Facility	SEC.18-T04N-R62W	Wellbore	Middlepark 18-9-2 PWB
Slot	SLOT#09 Middlepark 18-9-2 (359'FSL & 1543'FWL,SEC.18)		

WELLPATH DATA (120 stations) † = interpolated, ‡ = extrapolated station												
MD [ft]	Inclination [°]	Azimuth [°]	TVD [ft]	Vert Sect [ft]	North [ft]	East [ft]	Grid East [US ft]	Grid North [US ft]	Latitude	Longitude	DLS [°/100ft]	Comments
5523.00†	8.464	134.710	5468.64	-448.94	-518.38	534.84	3315400.67	1355871.61	40.3047471	-104.3691024	0.00	
5623.00†	8.464	134.710	5567.55	-457.94	-528.74	545.30	3315411.26	1355861.39	40.3047186	-104.3690649	0.00	
5654.21	8.464	134.710	5598.42	-460.75	-531.97	548.56	3315414.57	1355858.20	40.3047098	-104.3690532	0.00	KOP
5723.00†	5.964	87.626	5666.72	-463.26	-535.39	555.74	3315421.79	1355854.88	40.3047004	-104.3690275	9.00	
5823.00†	10.925	32.027	5765.74	-453.80	-527.12	565.97	3315431.92	1355863.27	40.3047231	-104.3689908	9.00	
5923.00†	19.093	16.833	5862.29	-429.04	-503.38	575.76	3315441.40	1355887.13	40.3047882	-104.3689557	9.00	
6023.00†	27.769	10.713	5953.97	-389.60	-464.76	584.84	3315449.99	1355925.86	40.3048942	-104.3689231	9.00	
6123.00†	36.593	7.360	6038.53	-336.44	-412.20	593.01	3315457.48	1355978.52	40.3050385	-104.3688939	9.00	
6223.00†	45.479	5.169	6113.88	-270.87	-347.00	600.05	3315463.70	1356043.80	40.3052175	-104.3688686	9.00	
6323.00†	54.395	3.563	6178.18	-194.50	-270.77	605.80	3315468.48	1356120.10	40.3054267	-104.3688480	9.00	
6423.00†	63.328	2.282	6229.84	-109.22	-185.38	610.12	3315471.70	1356205.54	40.3056611	-104.3688325	9.00	
6523.00†	72.271	1.188	6267.59	-17.13	-92.93	612.89	3315473.30	1356298.01	40.3059149	-104.3688226	9.00	
6623.00†	81.219	0.199	6290.50	79.51	4.30	614.05	3315473.22	1356395.24	40.3061818	-104.3688184	9.00	
6721.10	90.000	359.275	6298.00 <sup>1</sup>	176.43	102.01	613.60	3315471.52	1356492.93	40.3064500	-104.3688200	9.00	LANDING
6723.00†	90.000	359.275	6298.00	178.31	103.92	613.57	3315471.48	1356494.84	40.3064552	-104.3688201	0.00	
6823.00†	90.000	359.275	6298.00	277.40	203.91	612.31	3315468.94	1356594.80	40.3067297	-104.3688246	0.00	
6923.00†	90.000	359.275	6298.00	376.48	303.90	611.04	3315466.40	1356694.76	40.3070042	-104.3688291	0.00	
7023.00†	90.000	359.275	6298.00	475.56	403.89	609.78	3315463.86	1356794.73	40.3072786	-104.3688337	0.00	
7123.00†	90.000	359.275	6298.00	574.65	503.89	608.51	3315461.32	1356894.69	40.3075531	-104.3688382	0.00	
7223.00†	90.000	359.275	6298.00	673.73	603.88	607.24	3315458.79	1356994.65	40.3078276	-104.3688427	0.00	
7323.00†	90.000	359.275	6298.00	772.82	703.87	605.98	3315456.25	1357094.62	40.3081021	-104.3688473	0.00	
7423.00†	90.000	359.275	6298.00	871.90	803.86	604.71	3315453.71	1357194.58	40.3083765	-104.3688518	0.00	
7523.00†	90.000	359.275	6298.00	970.98	903.85	603.45	3315451.17	1357294.54	40.3086510	-104.3688563	0.00	
7623.00†	90.000	359.275	6298.00	1070.07	1003.84	602.18	3315448.63	1357394.51	40.3089255	-104.3688608	0.00	
7723.00†	90.000	359.275	6298.00	1169.15	1103.84	600.92	3315446.09	1357494.47	40.3091999	-104.3688654	0.00	
7823.00†	90.000	359.275	6298.00	1268.23	1203.83	599.65	3315443.56	1357594.43	40.3094744	-104.3688699	0.00	
7923.00†	90.000	359.275	6298.00	1367.32	1303.82	598.39	3315441.02	1357694.40	40.3097489	-104.3688744	0.00	
8023.00†	90.000	359.275	6298.00	1466.40	1403.81	597.12	3315438.48	1357794.36	40.3100234	-104.3688790	0.00	
8123.00†	90.000	359.275	6298.00	1565.48	1503.80	595.85	3315435.94	1357894.32	40.3102978	-104.3688835	0.00	
8223.00†	90.000	359.275	6298.00	1664.57	1603.80	594.59	3315433.40	1357994.29	40.3105723	-104.3688880	0.00	

REFERENCE WELLPATH IDENTIFICATION				
Operator	CONFLUENCE RESOURCES		Well	Middlepark 18-9-2
Field	WELD COUNTY (NAD83, TRUE NORTH)		API	0512347441
Facility	SEC.18-T04N-R62W		Wellbore	Middlepark 18-9-2 PWB
Slot	SLOT#09 Middlepark 18-9-2 (359'FSL & 1543'FWL,SEC.18)			

WELLPATH DATA (120 stations) † = interpolated, ‡ = extrapolated station												
MD [ft]	Inclination [°]	Azimuth [°]	TVD [ft]	Vert Sect [ft]	North [ft]	East [ft]	Grid East [US ft]	Grid North [US ft]	Latitude	Longitude	DLS [°/100ft]	Comments
8323.00†	90.000	359.275	6298.00	1763.65	1703.79	593.32	3315430.86	1358094.25	40.3108468	-104.3688925	0.00	
8423.00†	90.000	359.275	6298.00	1862.73	1803.78	592.06	3315428.33	1358194.21	40.3111213	-104.3688971	0.00	
8523.00†	90.000	359.275	6298.00	1961.82	1903.77	590.79	3315425.79	1358294.18	40.3113957	-104.3689016	0.00	
8623.00†	90.000	359.275	6298.00	2060.90	2003.76	589.53	3315423.25	1358394.14	40.3116702	-104.3689061	0.00	
8723.00†	90.000	359.275	6298.00	2159.98	2103.76	588.26	3315420.71	1358494.10	40.3119447	-104.3689107	0.00	
8823.00†	90.000	359.275	6298.00	2259.07	2203.75	587.00	3315418.17	1358594.07	40.3122191	-104.3689152	0.00	
8923.00†	90.000	359.275	6298.00	2358.15	2303.74	585.73	3315415.63	1358694.03	40.3124936	-104.3689197	0.00	
9023.00†	90.000	359.275	6298.00	2457.23	2403.73	584.47	3315413.10	1358793.99	40.3127681	-104.3689242	0.00	
9123.00†	90.000	359.275	6298.00	2556.32	2503.72	583.20	3315410.56	1358893.96	40.3130426	-104.3689288	0.00	
9223.00†	90.000	359.275	6298.00	2655.40	2603.72	581.93	3315408.02	1358993.92	40.3133170	-104.3689333	0.00	
9323.00†	90.000	359.275	6298.00	2754.48	2703.71	580.67	3315405.48	1359093.88	40.3135915	-104.3689378	0.00	
9423.00†	90.000	359.275	6298.00	2853.57	2803.70	579.40	3315402.94	1359193.85	40.3138660	-104.3689424	0.00	
9523.00†	90.000	359.275	6298.00	2952.65	2903.69	578.14	3315400.40	1359293.81	40.3141404	-104.3689469	0.00	
9623.00†	90.000	359.275	6298.00	3051.74	3003.68	576.87	3315397.87	1359393.77	40.3144149	-104.3689514	0.00	
9723.00†	90.000	359.275	6298.00	3150.82	3103.68	575.61	3315395.33	1359493.74	40.3146894	-104.3689560	0.00	
9823.00†	90.000	359.275	6298.00	3249.90	3203.67	574.34	3315392.79	1359593.70	40.3149639	-104.3689605	0.00	
9923.00†	90.000	359.275	6298.00	3348.99	3303.66	573.08	3315390.25	1359693.66	40.3152383	-104.3689650	0.00	
10023.00†	90.000	359.275	6298.00	3448.07	3403.65	571.81	3315387.71	1359793.63	40.3155128	-104.3689695	0.00	
10123.00†	90.000	359.275	6298.00	3547.15	3503.64	570.54	3315385.17	1359893.59	40.3157873	-104.3689741	0.00	
10223.00†	90.000	359.275	6298.00	3646.24	3603.64	569.28	3315382.64	1359993.55	40.3160618	-104.3689786	0.00	
10323.00†	90.000	359.275	6298.00	3745.32	3703.63	568.01	3315380.10	1360093.52	40.3163362	-104.3689831	0.00	
10423.00†	90.000	359.275	6298.00	3844.40	3803.62	566.75	3315377.56	1360193.48	40.3166107	-104.3689877	0.00	
10523.00†	90.000	359.275	6298.00	3943.49	3903.61	565.48	3315375.02	1360293.44	40.3168852	-104.3689922	0.00	
10623.00†	90.000	359.275	6298.00	4042.57	4003.60	564.22	3315372.48	1360393.41	40.3171596	-104.3689967	0.00	
10723.00†	90.000	359.275	6298.00	4141.65	4103.60	562.95	3315369.94	1360493.37	40.3174341	-104.3690013	0.00	
10823.00†	90.000	359.275	6298.00	4240.74	4203.59	561.69	3315367.41	1360593.33	40.3177086	-104.3690058	0.00	
10923.00†	90.000	359.275	6298.00	4339.82	4303.58	560.42	3315364.87	1360693.29	40.3179831	-104.3690103	0.00	
11023.00†	90.000	359.275	6298.00	4438.90	4403.57	559.16	3315362.33	1360793.26	40.3182575	-104.3690148	0.00	
11123.00†	90.000	359.275	6298.00	4537.99	4503.56	557.89	3315359.79	1360893.22	40.3185320	-104.3690194	0.00	
11136.84	90.000	359.275	6298.00 <sup>‡</sup>	4551.71	4517.41	557.71	3315359.44	1360907.06	40.3185700	-104.3690200	0.00	TD

HOLE & CASING SECTIONS									
- Ref Wellbore: Middlepark 18-9-2 PWB					Ref Wellpath: Middlepark 18-9-2 PWP Rev-A.0				
String/Diameter	Start MD [ft]	End MD [ft]	Interval [ft]	Start TVD [ft]	End TVD [ft]	Start N/S [ft]	Start E/W [ft]	End N/S [ft]	End E/W [ft]
9.625in Casing Surface	23.00	1662.31	1639.31	23.00	1650.00	0.00	0.00	-118.61	130.99

TARGETS									
Name	MD [ft]	TVD [ft]	North [ft]	East [ft]	Grid East [US ft]	Grid North [US ft]	Latitude	Longitude	Shape
SEC.18-T04N-R62W	N/A	0.00	-156.65	122.72	3314984.00	1356228.05	40.3057400	-104.3705800	polygon
2D Polygon: dimensions not calculated									
2) Middlepark 18-9-2 BHL REV-1 (470'FNL & 2158'FWL,SEC.18)	11136.84	6298.00	4517.41	557.71	3315359.44	1360907.06	40.3185700	-104.3690200	point
1) Middlepark 18-9-2 LP REV-1 (470'FSL & 2158'FWL,SEC.18)	6721.10	6298.00	102.01	613.60	3315471.52	1356492.93	40.3064500	-104.3688200	point

<b>SURVEY PROGRAM - Ref Wellbore: Middlepark 18-9-2 PWB      Ref Wellpath: Middlepark 18-9-2 PWP Rev-A.0</b>				
<b>Start MD [ft]</b>	<b>End MD [ft]</b>	<b>Positional Uncertainty Model</b>	<b>Log Name/Comment</b>	<b>Wellbore</b>
23.00	1662.31	BH NaviTrak (2019) (Axial)		Middlepark 18-9-2 PWB
1662.31	11136.84	BH AutoTrak Curve/eXpress (2019) (Short spacing)		Middlepark 18-9-2 PWB



# Planned Wellpath Report

Middlepark 18-9-2 PWP Rev-A.0

Page 6 of 6



REFERENCE WELLPATH IDENTIFICATION			
Operator	CONFLUENCE RESOURCES	Well	Middlepark 18-9-2
Field	WELD COUNTY (NAD83, TRUE NORTH)	API	0512347441
Facility	SEC.18-T04N-R62W	Wellbore	Middlepark 18-9-2 PWB
Slot	SLOT#09 Middlepark 18-9-2 (359'FSL & 1543'FWL,SEC.18)		

DESIGN COMMENTS				
MD [ft]	Inclination [°]	Azimuth [°]	TVD [ft]	Comment
23.00	0.000	131.000	23.00	Tie On
250.00	0.000	131.000	250.00	End of Tangent
673.20	8.464	131.000	671.66	End of Build (J)
1273.20	8.464	131.000	1265.13	End of Tangent (J)
1300.50	8.464	134.710	1292.13	Build (XS)
5654.21	8.464	134.710	5598.42	KOP
6721.10	90.000	359.275	6298.00	LANDING
11136.84	90.000	359.275	6298.00	TD