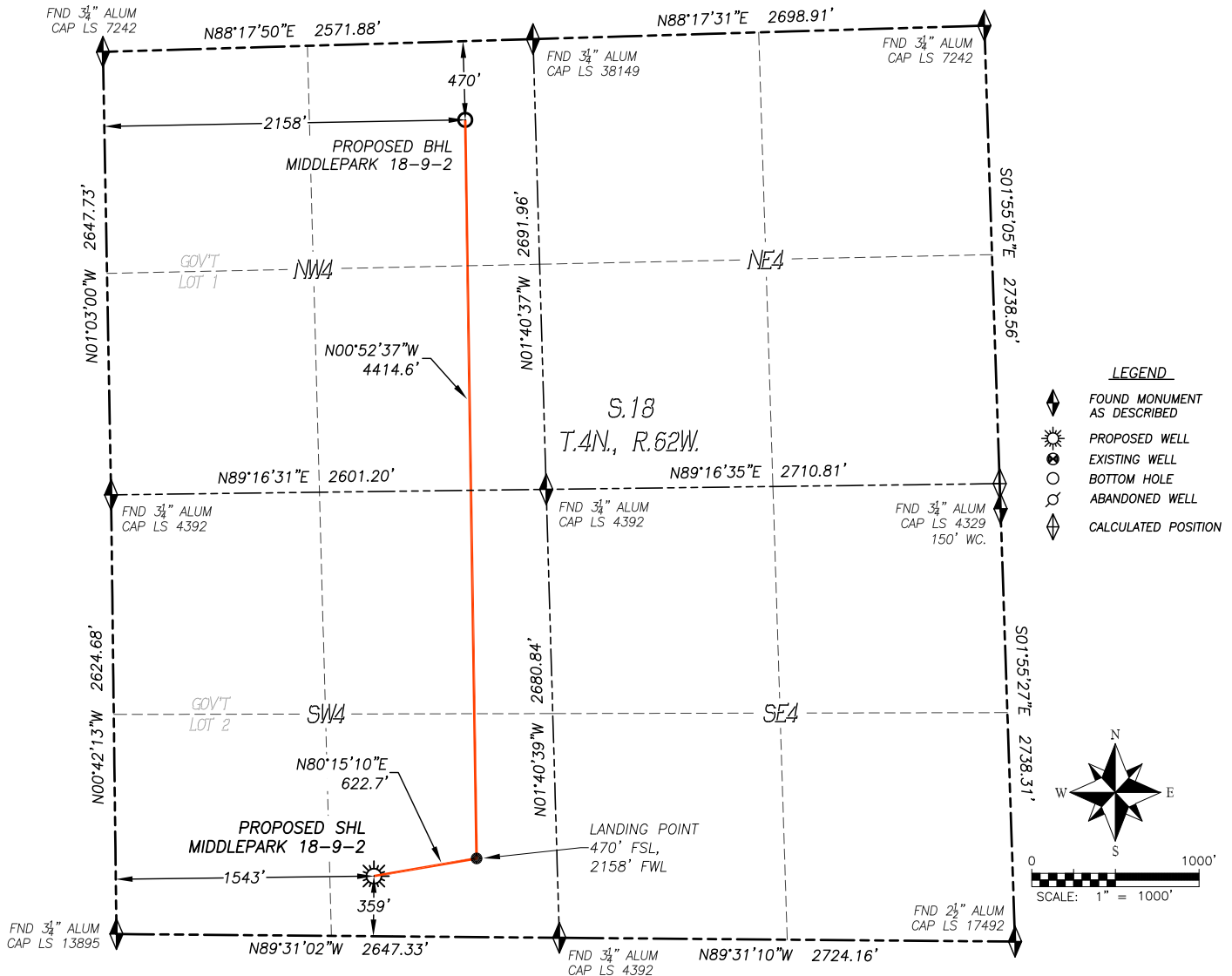


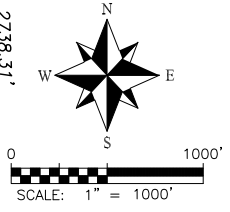
WELL LOCATION CERTIFICATE

MIDDLEPARK 18-9-2

SECTION 18, TOWNSHIP 4 NORTH, RANGE 62 WEST OF THE 6TH P.M.



- LEGEND**
- FOUND MONUMENT AS DESCRIBED
 - PROPOSED WELL
 - EXISTING WELL
 - BOTTOM HOLE
 - ABANDONED WELL
 - CALCULATED POSITION

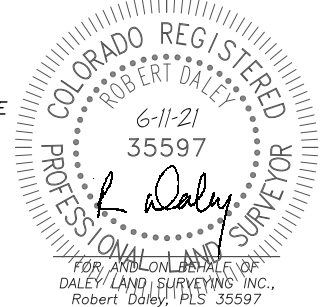


IN ACCORDANCE WITH A REQUEST FROM CONFLUENCE RESOURCES, DALEY LAND SURVEYING, INC. HAS DETERMINED THE SURFACE LOCATION OF THE MIDDLEPARK 18-9-2 WELL TO BE 359' FSL, 1543' FWL, AND THE BOTTOM HOLE LOCATION TO BE 470' FNL, 2158' FWL, AS MEASURED AT NINETY (90) DEGREES FROM THE SECTION LINES OF SECTION 18, TOWNSHIP 4 NORTH, RANGE 62 WEST, OF THE 6TH PRINCIPAL MERIDIAN, WELD COUNTY, COLORADO.

I HEREBY STATE THAT THIS WELL LOCATION CERTIFICATE WAS PREPARED BY ME OR UNDER MY DIRECT SUPERVISION, THAT THE WORK WAS COMPLETED ON 3/3/2020 FOR AND ON BEHALF OF CONFLUENCE RESOURCES, AND THAT THIS MAP DOES NOT REPRESENT A BOUNDARY SURVEY, IT IS NOT A LAND SURVEY PLAT OR AN IMPROVEMENT SURVEY PLAT AND IT IS NOT TO BE RELIED UPON FOR THE ESTABLISHMENT OF FENCE, BUILDING OR OTHER FUTURE IMPROVEMENT LINES.

NOTES:

1. BEARINGS FOR THIS MAP ARE ASSUMED AND BASED UPON GPS OBSERVATIONS MADE BETWEEN MONUMENTS LOCATED AT THE SOUTH QUARTER CORNER AND SOUTHWEST CORNER OF SECTION 18, T.4N., R.62W.
2. HORIZONTAL DATUM IS NAD83.
3. VERTICAL DATUM IS NAVD88 AND ORIGINATES FROM THE LOCAL C.O.R.S. NETWORK, UTILIZING THE GEOID12A MODEL.
4. SEE LOCATION DRAWING FOR VISIBLE IMPROVEMENTS WITHIN 500' OF PROPOSED DISTURBED AREA.
5. SURFACE USE: WELL PAD/RANGELAND.
6. INST. OPERATOR: KYLE DALEY



NEAREST CULTURAL ITEMS:

BUILDING:	2658'± NE
BUILDING UNIT:	4058'± NW
HIGH OCC. BLD. UNIT:	5280'+
DES. OUTSIDE ACTIVITY AREA:	5280'+
PUBLIC ROAD:	883'± NE
ABOVE GROUND UTILITY:	822'± NE
RAILROAD:	5280'+
PROPERTY LINE:	359'± S
SCHOOL FACILITY:	5280'+
SCHOOL PROPERTY LINE:	5280'+
CHILDCARE FACILITY:	5280'+

NAD 83 LATITUDE AND LONGITUDE

SURFACE LOCATION:

LATITUDE: N40.30617°
 LONGITUDE: W104.37102°
 ELEV.: 4563'
 PDOP.: 1.9
 QTR/QTR: SE4/SW4

LANDING POINT:

LATITUDE: N40.30645°
 LONGITUDE: W104.36882°

BOTTOM HOLE:

LATITUDE: N40.31857°
 LONGITUDE: W104.36902°

