

# CONFLUENCE RESOURCES



Location: COLORADO Slot: SLOTR08 Middlepark 18-8-3L (340FSL & 1558FWL,SEC.18)

Field: WELD COUNTY (NAD83, TRUE NORTH) Well: Middlepark 18-8-3L

Facility: SEC.18-T04N-R62W Wellbore: Middlepark 18-8-3L PWB

Plot reference wellpath is Middlepark 18-8-3L PWP Rev-A.0

True vertical depths are referenced to Rig (23) (KB)

Reference wellpath measured depths are referenced to Rig (23) (KB)

Rig (23) (KB) to Mean Sea Level: 4586 feet

Mean Sea Level to Mud line (At Slot: SLOTR08 Middlepark 18-8-3L (340FSL & 1558FWL,SEC.18)): 0 feet

Offset wellpath MDs are referenced to each path's default MD datum

Grid System: NAD83 / Lambert Colorado SP, Northern Zone (501), US feet

North Reference: True north

Scale: True distance

Coordinates are in feet referenced to Slot

Depths are in feet

Created by: palnsr on 2021-12-01; Database: WellArchitectDB

## Location Information

Facility Name	Grid East (US ft)	Grid North (US ft)	Latitude	Longitude
SEC.18-T04N-R62W	3314967.040	1356246.051	40.3057900°	-104.3706400°
Slot	Local N (ft)	Local E (ft)	Grid East (US ft)	Grid North (US ft)
SLOTR08 Middlepark 18-8-3L (340FSL & 1558FWL,SEC.18)	120.22	-89.25	3314876.269	1356365.121
Rig (23) (KB) to Mud line (At Slot: SLOTR08 Middlepark 18-8-3L (340FSL & 1558FWL,SEC.18))			40.3061200°	-104.3709600°
Mean Sea Level to Mud line (At Slot: SLOTR08 Middlepark 18-8-3L (340FSL & 1558FWL,SEC.18))			4586	
Rig (23) (KB) to Mean Sea Level			4586	

## Hole and Casing Sections

Name	Start MD (ft)	End MD (ft)	Interval (ft)	Start TVD (ft)	End TVD (ft)	Start Local N (ft)	Start Local E (ft)	End Local N (ft)	End Local E (ft)	Wellbore
9.625in Casing Surface	23.00	1670.35	1647.35	23.00	1650.00	0.00	0.00	-109.01	195.31	Middlepark 18-8-3L PWB

## Survey Program

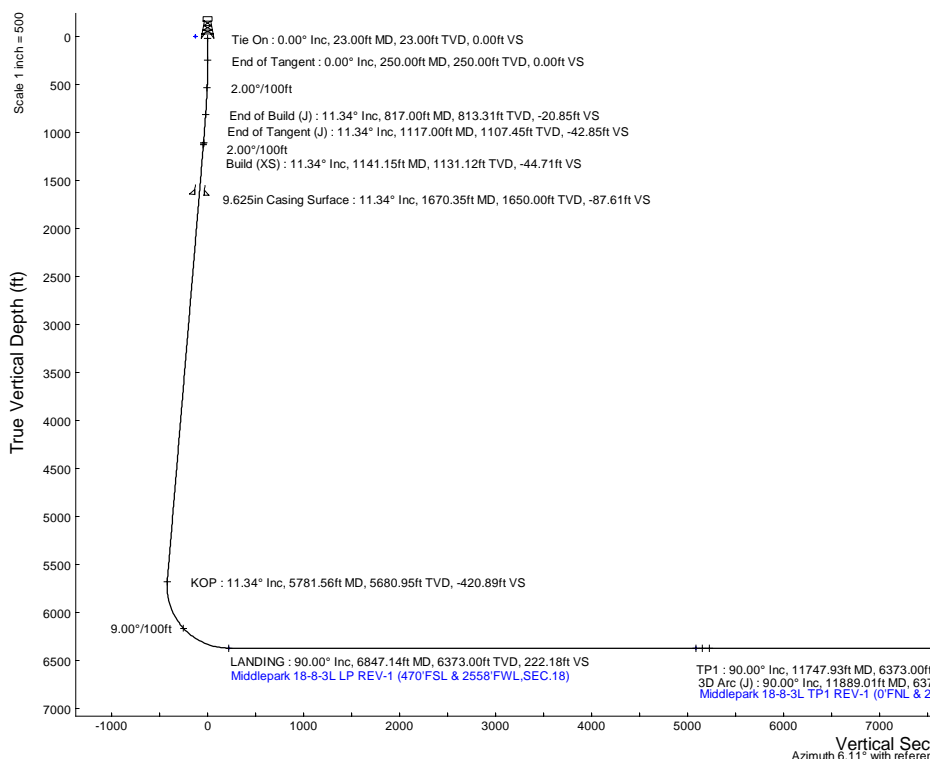
Start MD (ft)	End MD (ft)	Tool	Model	Log Name/Comment	Wellbore
23.00	1670.35	BH NavTrak (2019)	BH NavTrak (2019) (Axial)		Middlepark 18-8-3L PWB
1670.35	16529.82	BH AutoTrak CurveXpress (2019)	BH AutoTrak CurveXpress (2019) (Short spacing)		Middlepark 18-8-3L PWB

## Bottom Hole Location

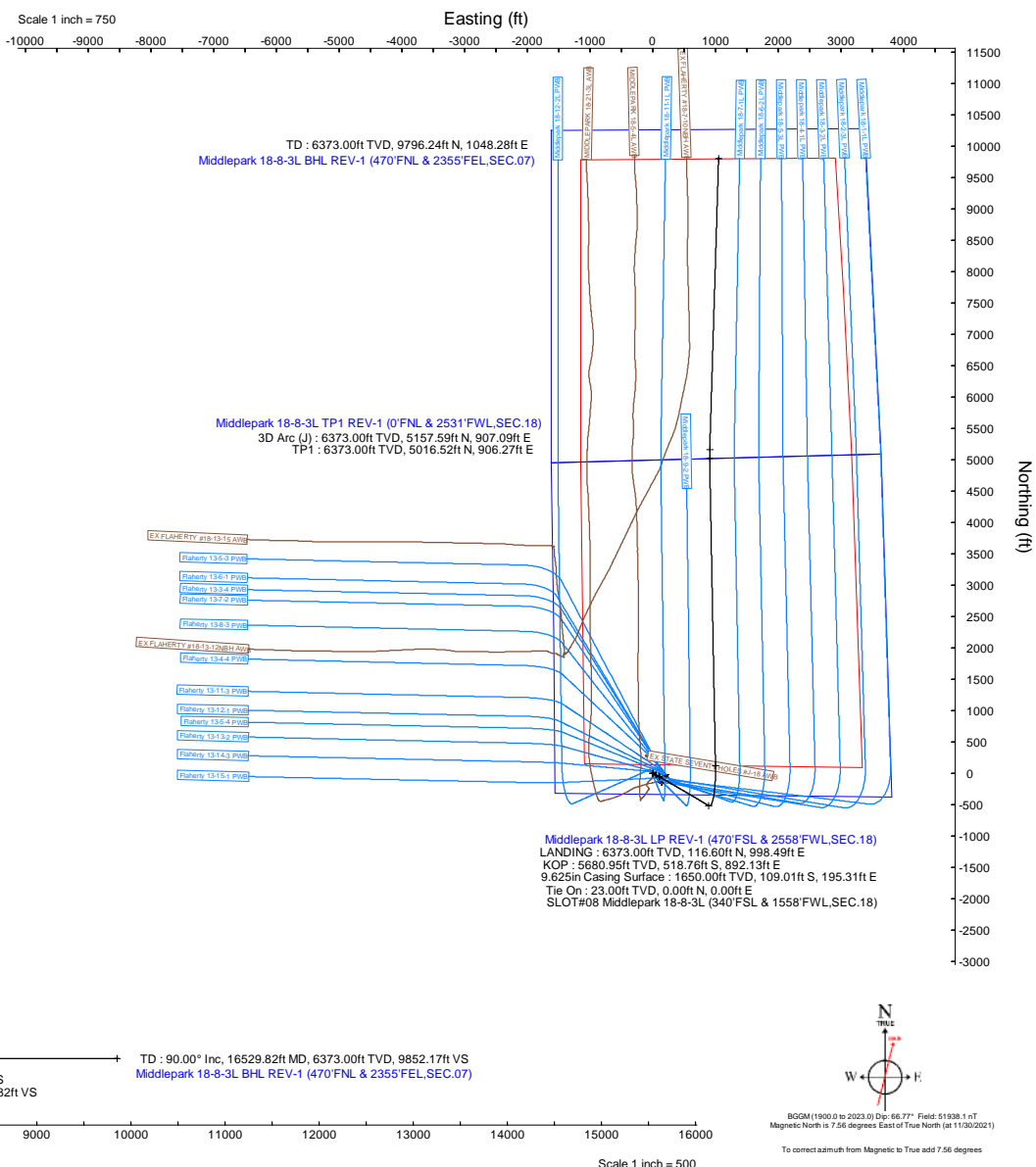
MD (ft)	Inc (°)	Az (°)	TVD (ft)	Local N (ft)	Local E (ft)	Grid East (US ft)	Grid North (US ft)	Latitude	Longitude
16529.82	90.000	1.743	6373.00	9796.24	1048.28	3315799.70	1366173.48	40.3330100°	-104.3672000°

## Targets

Name	MD (ft)	TVD (ft)	Local N (ft)	Local E (ft)	Grid East (US ft)	Grid North (US ft)	Latitude	Longitude
SEC.07-T04N-R62W	N/A	0.00	-138.44	105.99	3314984.00	1356228.05	40.3057400°	-104.3705800°
SEC.07-18-T04N-R62W (SB 470)	N/A	0.00	-138.44	105.99	3314984.00	1356228.05	40.3057400°	-104.3705800°
SEC.18-T04N-R62W	N/A	0.00	-138.44	105.99	3314984.00	1356228.05	40.3057400°	-104.3705800°
Middlepark 18-8-3L BHL REV-1 (470FNL & 2355FEL,SEC.07)	16529.82	6373.00	9796.24	1048.28	3315799.70	1366173.48	40.3330100°	-104.3672000°
Middlepark 18-8-3L LP REV-1 (470FSL & 2558FWL,SEC.18)	6847.14	6373.00	116.60	998.49	3315873.15	1356494.42	40.3064400°	-104.3673800°
Middlepark 18-8-3L TP1 REV-1 (0FNL & 2531FWL,SEC.18)	11747.93	6373.00	5016.52	906.27	3315718.56	1361392.55	40.3198900°	-104.3677100°



Well Profile Data								
Design Comment	MD (ft)	Inc (°)	Az (°)	TVD (ft)	Local N (ft)	Local E (ft)	DLS (°/100ft)	VS (ft)
Tie On	23.00	0.000	118.000	23.00	0.00	0.00	0.00	0.00
End of Tangent	250.00	0.000	118.000	250.00	0.00	0.00	0.00	0.00
End of Build (J)	817.00	11.340	118.000	813.31	-26.26	49.38	2.00	-20.85
End of Tangent (J)	1117.00	11.340	118.000	1107.45	-53.95	101.47	0.00	-42.85
Build (XS)	1141.15	11.340	120.456	1131.12	-56.27	105.61	2.00	-44.71
KOP	5781.56	11.340	120.456	5680.95	-518.76	892.13	0.00	-420.89
LANDING	6847.14	90.000	358.922	6373.00	116.60	998.49	9.00	222.18
TP1	11747.93	90.000	358.922	6373.00	5016.52	906.27	0.00	5084.47
3D Arc (J)	11889.01	90.000	1.743	6373.00	5157.59	907.09	2.00	5224.82
TD	16529.82	90.000	1.743	6373.00	9796.24	1048.28	0.00	9852.17



# Planned Wellpath Report

Middlepark 18-8-3L PWP Rev-A.0

Page 1 of 10

## REFERENCE WELLPATH IDENTIFICATION

Operator	CONFLUENCE RESOURCES	Well	Middlepark 18-8-3L
Field	WELD COUNTY (NAD83, TRUE NORTH)	API	0512347459
Facility	SEC.18-T04N-R62W	Wellbore	Middlepark 18-8-3L PWB
Slot	SLOT#08 Middlepark 18-8-3L (340'FSL & 1558'FWL,SEC.18)		

## REPORT SETUP INFORMATION

Projection System	NAD83 / Lambert Colorado SP, Northern Zone (501), US feet	Software System	WellArchitect® 6.0
North Reference	True	User	Painsetr
Scale	0.999957	Report Generated	12/1/2021 at 8:37:39 PM
Convergence at slot	0.73° East	Database	WellArchitectDB

## WELLPATH LOCATION

	Local coordinates		Grid coordinates		Geographic coordinates	
	North[ft]	East[ft]	Easting[US ft]	Northing[US ft]	Latitude	Longitude
Slot Location	120.22	-89.25	3314876.27	1356365.12	40.3061200°	-104.3709600°
Facility Reference Pt			3314967.04	1356246.05	40.3057900°	-104.3706400°
Field Reference Pt			3230456.90	1245096.09	40.0032400°	-104.6773400°

## WELLPATH DATUM

Calculation method	Minimum curvature	Rig (23') (KB) to Facility Vertical Datum	4586.00ft
Horizontal Reference Pt	Slot	Rig (23') (KB) to Mean Sea Level	4586.00ft
Vertical Reference Pt	Rig (23') (KB)	Rig (23') (KB) to Mud Line at Slot (SLOT#08 Middlepark 18-8-3L (340'FSL & 1558'FWL,SEC.18))	4586.00ft
MD Reference Pt	Rig (23') (KB)	Section Origin	N 0.00, E 0.00 ft
Field Vertical Reference	Mean Sea Level	Section Azimuth	6.11°

# Planned Wellpath Report

Middlepark 18-8-3L PWP Rev-A.0

Page 2 of 10

## REFERENCE WELLPATH IDENTIFICATION

Operator	CONFLUENCE RESOURCES	Well	Middlepark 18-8-3L
Field	WELD COUNTY (NAD83, TRUE NORTH)	API	0512347459
Facility	SEC.18-T04N-R62W	Wellbore	Middlepark 18-8-3L PWB
Slot	SLOT#08 Middlepark 18-8-3L (340'FSL & 1558'FWL,SEC.18)		

## WELLPATH DATA (176 stations) † = interpolated, ‡ = extrapolated station

MD [ft]	Inclination [°]	Azimuth [°]	TVD [ft]	Vert Sect [ft]	North [ft]	East [ft]	Grid East [US ft]	Grid North [US ft]	Latitude	Longitude	DLS [°/100ft]	Comments
0.00†	0.000	118.000	0.00	0.00	0.00	0.00	3314876.27	1356365.12	40.3061200	-104.3709600	0.00	
23.00	0.000	118.000	23.00	0.00	0.00	0.00	3314876.27	1356365.12	40.3061200	-104.3709600	0.00	Tie On
123.00†	0.000	118.000	123.00	0.00	0.00	0.00	3314876.27	1356365.12	40.3061200	-104.3709600	0.00	
223.00†	0.000	118.000	223.00	0.00	0.00	0.00	3314876.27	1356365.12	40.3061200	-104.3709600	0.00	
250.00	0.000	118.000	250.00	0.00	0.00	0.00	3314876.27	1356365.12	40.3061200	-104.3709600	0.00	End of Tangent
323.00†	1.460	118.000	322.99	-0.35	-0.44	0.82	3314877.10	1356364.69	40.3061188	-104.3709571	2.00	
423.00†	3.460	118.000	422.89	-1.95	-2.45	4.61	3314880.91	1356362.73	40.3061133	-104.3709435	2.00	
523.00†	5.460	118.000	522.59	-4.85	-6.10	11.48	3314887.82	1356359.17	40.3061032	-104.3709189	2.00	
623.00†	7.460	118.000	621.95	-9.04	-11.38	21.41	3314897.82	1356354.01	40.3060888	-104.3708832	2.00	
723.00†	9.460	118.000	720.85	-14.53	-18.29	34.40	3314910.90	1356347.27	40.3060698	-104.3708367	2.00	
817.00	11.340	118.000	813.31	-20.85	-26.26	49.38	3314925.98	1356339.50	40.3060479	-104.3707829	2.00	End of Build (J)
823.00†	11.340	118.000	819.19	-21.29	-26.81	50.42	3314927.03	1356338.96	40.3060464	-104.3707792	0.00	
923.00†	11.340	118.000	917.24	-28.62	-36.04	67.78	3314944.50	1356329.95	40.3060211	-104.3707170	0.00	
1023.00†	11.340	118.000	1015.28	-35.96	-45.27	85.15	3314961.98	1356320.94	40.3059957	-104.3706547	0.00	
1117.00	11.340	118.000	1107.45	-42.85	-53.95	101.47	3314978.41	1356312.47	40.3059719	-104.3705962	0.00	End of Tangent (J)
1123.00†	11.338	118.610	1113.33	-43.29	-54.51	102.50	3314979.45	1356311.92	40.3059704	-104.3705925	2.00	
1141.15	11.340	120.456	1131.12	-44.71	-56.27	105.61	3314982.58	1356310.20	40.3059655	-104.3705814	2.00	Build (XS)
1223.00†	11.340	120.456	1211.38	-51.35	-64.43	119.48	3314996.56	1356302.22	40.3059432	-104.3705316	0.00	
1323.00†	11.340	120.456	1309.43	-59.45	-74.39	136.43	3315013.63	1356292.47	40.3059158	-104.3704708	0.00	
1423.00†	11.340	120.456	1407.48	-67.56	-84.36	153.38	3315030.70	1356282.72	40.3058884	-104.3704101	0.00	
1523.00†	11.340	120.456	1505.52	-75.67	-94.33	170.33	3315047.78	1356272.98	40.3058611	-104.3703493	0.00	
1623.00†	11.340	120.456	1603.57	-83.77	-104.29	187.28	3315064.85	1356263.23	40.3058337	-104.3702885	0.00	
1723.00†	11.340	120.456	1701.62	-91.88	-114.26	204.23	3315081.93	1356253.48	40.3058064	-104.3702278	0.00	
1823.00†	11.340	120.456	1799.67	-99.99	-124.23	221.18	3315099.00	1356243.73	40.3057790	-104.3701670	0.00	
1923.00†	11.340	120.456	1897.71	-108.09	-134.19	238.13	3315116.08	1356233.98	40.3057516	-104.3701062	0.00	
2023.00†	11.340	120.456	1995.76	-116.20	-144.16	255.08	3315133.15	1356224.23	40.3057243	-104.3700454	0.00	
2123.00†	11.340	120.456	2093.81	-124.31	-154.13	272.03	3315150.22	1356214.48	40.3056969	-104.3699847	0.00	
2223.00†	11.340	120.456	2191.86	-132.41	-164.09	288.98	3315167.30	1356204.73	40.3056696	-104.3699239	0.00	
2323.00†	11.340	120.456	2289.91	-140.52	-174.06	305.93	3315184.37	1356194.98	40.3056422	-104.3698631	0.00	
2423.00†	11.340	120.456	2387.95	-148.63	-184.03	322.88	3315201.45	1356185.23	40.3056149	-104.3698024	0.00	

# Planned Wellpath Report

Middlepark 18-8-3L PWP Rev-A.0

Page 3 of 10

## REFERENCE WELLPATH IDENTIFICATION

Operator	CONFLUENCE RESOURCES	Well	Middlepark 18-8-3L
Field	WELD COUNTY (NAD83, TRUE NORTH)	API	0512347459
Facility	SEC.18-T04N-R62W	Wellbore	Middlepark 18-8-3L PWB
Slot	SLOT#08 Middlepark 18-8-3L (340'FSL & 1558'FWL,SEC.18)		

## WELLPATH DATA (176 stations) † = interpolated, ‡ = extrapolated station

MD [ft]	Inclination [°]	Azimuth [°]	TVD [ft]	Vert Sect [ft]	North [ft]	East [ft]	Grid East [US ft]	Grid North [US ft]	Latitude	Longitude	DLS [°/100ft]	Comments
2523.00†	11.340	120.456	2486.00	-156.73	-193.99	339.83	3315218.52	1356175.48	40.3055875	-104.3697416	0.00	
2623.00†	11.340	120.456	2584.05	-164.84	-203.96	356.77	3315235.60	1356165.73	40.3055601	-104.3696808	0.00	
2723.00†	11.340	120.456	2682.10	-172.95	-213.93	373.72	3315252.67	1356155.98	40.3055328	-104.3696201	0.00	
2823.00†	11.340	120.456	2780.15	-181.05	-223.89	390.67	3315269.74	1356146.23	40.3055054	-104.3695593	0.00	
2923.00†	11.340	120.456	2878.19	-189.16	-233.86	407.62	3315286.82	1356136.48	40.3054781	-104.3694985	0.00	
3023.00†	11.340	120.456	2976.24	-197.27	-243.83	424.57	3315303.89	1356126.73	40.3054507	-104.3694377	0.00	
3123.00†	11.340	120.456	3074.29	-205.37	-253.79	441.52	3315320.97	1356116.98	40.3054233	-104.3693770	0.00	
3223.00†	11.340	120.456	3172.34	-213.48	-263.76	458.47	3315338.04	1356107.23	40.3053960	-104.3693162	0.00	
3323.00†	11.340	120.456	3270.38	-221.59	-273.72	475.42	3315355.12	1356097.48	40.3053686	-104.3692554	0.00	
3423.00†	11.340	120.456	3368.43	-229.69	-283.69	492.37	3315372.19	1356087.73	40.3053413	-104.3691947	0.00	
3523.00†	11.340	120.456	3466.48	-237.80	-293.66	509.32	3315389.26	1356077.98	40.3053139	-104.3691339	0.00	
3623.00†	11.340	120.456	3564.53	-245.91	-303.62	526.27	3315406.34	1356068.23	40.3052866	-104.3690731	0.00	
3723.00†	11.340	120.456	3662.58	-254.01	-313.59	543.22	3315423.41	1356058.48	40.3052592	-104.3690124	0.00	
3823.00†	11.340	120.456	3760.62	-262.12	-323.56	560.17	3315440.49	1356048.74	40.3052318	-104.3689516	0.00	
3923.00†	11.340	120.456	3858.67	-270.23	-333.52	577.12	3315457.56	1356038.99	40.3052045	-104.3688908	0.00	
4023.00†	11.340	120.456	3956.72	-278.33	-343.49	594.07	3315474.64	1356029.24	40.3051771	-104.3688301	0.00	
4123.00†	11.340	120.456	4054.77	-286.44	-353.46	611.02	3315491.71	1356019.49	40.3051498	-104.3687693	0.00	
4223.00†	11.340	120.456	4152.82	-294.55	-363.42	627.97	3315508.78	1356009.74	40.3051224	-104.3687085	0.00	
4323.00†	11.340	120.456	4250.86	-302.65	-373.39	644.92	3315525.86	1355999.99	40.3050950	-104.3686477	0.00	
4423.00†	11.340	120.456	4348.91	-310.76	-383.36	661.87	3315542.93	1355990.24	40.3050677	-104.3685870	0.00	
4523.00†	11.340	120.456	4446.96	-318.86	-393.32	678.82	3315560.01	1355980.49	40.3050403	-104.3685262	0.00	
4623.00†	11.340	120.456	4545.01	-326.97	-403.29	695.76	3315577.08	1355970.74	40.3050130	-104.3684654	0.00	
4723.00†	11.340	120.456	4643.05	-335.08	-413.26	712.71	3315594.16	1355960.99	40.3049856	-104.3684047	0.00	
4823.00†	11.340	120.456	4741.10	-343.18	-423.22	729.66	3315611.23	1355951.24	40.3049582	-104.3683439	0.00	
4923.00†	11.340	120.456	4839.15	-351.29	-433.19	746.61	3315628.30	1355941.49	40.3049309	-104.3682831	0.00	
5023.00†	11.340	120.456	4937.20	-359.40	-443.16	763.56	3315645.38	1355931.74	40.3049035	-104.3682224	0.00	
5123.00†	11.340	120.456	5035.25	-367.50	-453.12	780.51	3315662.45	1355921.99	40.3048762	-104.3681616	0.00	
5223.00†	11.340	120.456	5133.29	-375.61	-463.09	797.46	3315679.53	1355912.24	40.3048488	-104.3681008	0.00	
5323.00†	11.340	120.456	5231.34	-383.72	-473.06	814.41	3315696.60	1355902.49	40.3048214	-104.3680401	0.00	
5423.00†	11.340	120.456	5329.39	-391.82	-483.02	831.36	3315713.68	1355892.74	40.3047941	-104.3679793	0.00	

## REFERENCE WELLPATH IDENTIFICATION

Operator	CONFLUENCE RESOURCES	Well	Middlepark 18-8-3L
Field	WELD COUNTY (NAD83, TRUE NORTH)	API	0512347459
Facility	SEC.18-T04N-R62W	Wellbore	Middlepark 18-8-3L PWB
Slot	SLOT#08 Middlepark 18-8-3L (340'FSL & 1558'FWL,SEC.18)		

## WELLPATH DATA (176 stations) † = interpolated, ‡ = extrapolated station

MD [ft]	Inclination [°]	Azimuth [°]	TVD [ft]	Vert Sect [ft]	North [ft]	East [ft]	Grid East [US ft]	Grid North [US ft]	Latitude	Longitude	DLS [°/100ft]	Comments
5523.00†	11.340	120.456	5427.44	-399.93	-492.99	848.31	3315730.75	1355882.99	40.3047667	-104.3679185	0.00	
5623.00†	11.340	120.456	5525.48	-408.04	-502.96	865.26	3315747.82	1355873.24	40.3047394	-104.3678578	0.00	
5723.00†	11.340	120.456	5623.53	-416.14	-512.92	882.21	3315764.90	1355863.49	40.3047120	-104.3677970	0.00	
5781.56	11.340	120.456	5680.95	-420.89	-518.76	892.13	3315774.90	1355857.78	40.3046960	-104.3677614	0.00	KOP
5823.00†	9.938	101.613	5721.69	-422.91	-521.55	899.15	3315781.95	1355855.09	40.3046883	-104.3677362	9.00	
5923.00†	11.843	53.524	5820.08	-416.79	-517.17	915.89	3315798.63	1355859.67	40.3047003	-104.3676762	9.00	
6023.00†	18.498	29.646	5916.63	-395.26	-497.25	932.02	3315814.50	1355879.80	40.3047550	-104.3676184	9.00	
6123.00†	26.542	18.932	6008.96	-358.85	-462.25	947.15	3315829.18	1355914.98	40.3048511	-104.3675642	9.00	
6223.00†	35.031	13.035	6094.81	-308.47	-413.06	960.90	3315842.31	1355964.35	40.3049861	-104.3675148	9.00	
6323.00†	43.704	9.224	6172.06	-245.35	-350.87	972.93	3315853.55	1356026.68	40.3051568	-104.3674717	9.00	
6423.00†	52.468	6.467	6238.80	-171.06	-277.22	982.96	3315862.63	1356100.45	40.3053590	-104.3674357	9.00	
6523.00†	61.283	4.295	6293.40	-87.41	-193.92	990.72	3315869.34	1356183.84	40.3055876	-104.3674079	9.00	
6623.00†	70.128	2.464	6334.51	3.54	-103.03	996.04	3315873.50	1356274.79	40.3058371	-104.3673888	9.00	
6723.00†	78.989	0.828	6361.11	99.53	-6.78	998.78	3315875.01	1356371.06	40.3061013	-104.3673790	9.00	
6823.00†	87.858	359.288	6372.55	198.22	92.46	998.86	3315873.83	1356470.29	40.3063738	-104.3673787	9.00	
6847.14	90.000	358.922	6373.00†	222.18	116.60	998.49	3315873.15	1356494.42	40.3064400	-104.3673800	9.00	LANDING
6923.00†	90.000	358.922	6373.00	297.44	192.44	997.06	3315870.75	1356570.23	40.3066482	-104.3673851	0.00	
7023.00†	90.000	358.922	6373.00	396.65	292.42	995.18	3315867.60	1356670.18	40.3069226	-104.3673918	0.00	
7123.00†	90.000	358.922	6373.00	495.87	392.41	993.30	3315864.45	1356770.12	40.3071971	-104.3673986	0.00	
7223.00†	90.000	358.922	6373.00	595.08	492.39	991.42	3315861.29	1356870.07	40.3074715	-104.3674053	0.00	
7323.00†	90.000	358.922	6373.00	694.30	592.37	989.53	3315858.14	1356970.02	40.3077460	-104.3674120	0.00	
7423.00†	90.000	358.922	6373.00	793.51	692.35	987.65	3315854.98	1357069.96	40.3080204	-104.3674188	0.00	
7523.00†	90.000	358.922	6373.00	892.72	792.34	985.77	3315851.83	1357169.91	40.3082949	-104.3674255	0.00	
7623.00†	90.000	358.922	6373.00	991.94	892.32	983.89	3315848.67	1357269.85	40.3085693	-104.3674322	0.00	
7723.00†	90.000	358.922	6373.00	1091.15	992.30	982.01	3315845.52	1357369.80	40.3088438	-104.3674390	0.00	
7823.00†	90.000	358.922	6373.00	1190.37	1092.28	980.12	3315842.36	1357469.74	40.3091182	-104.3674457	0.00	
7923.00†	90.000	358.922	6373.00	1289.58	1192.26	978.24	3315839.21	1357569.69	40.3093926	-104.3674524	0.00	
8023.00†	90.000	358.922	6373.00	1388.80	1292.25	976.36	3315836.06	1357669.64	40.3096671	-104.3674592	0.00	
8123.00†	90.000	358.922	6373.00	1488.01	1392.23	974.48	3315832.90	1357769.58	40.3099415	-104.3674659	0.00	
8223.00†	90.000	358.922	6373.00	1587.23	1492.21	972.60	3315829.75	1357869.53	40.3102160	-104.3674726	0.00	

# Planned Wellpath Report

Middlepark 18-8-3L PWP Rev-A.0

Page 5 of 10

## REFERENCE WELLPATH IDENTIFICATION

Operator	CONFLUENCE RESOURCES	Well	Middlepark 18-8-3L
Field	WELD COUNTY (NAD83, TRUE NORTH)	API	0512347459
Facility	SEC.18-T04N-R62W	Wellbore	Middlepark 18-8-3L PWB
Slot	SLOT#08 Middlepark 18-8-3L (340'FSL & 1558'FWL,SEC.18)		

## WELLPATH DATA (176 stations) † = interpolated, ‡ = extrapolated station

MD [ft]	Inclination [°]	Azimuth [°]	TVD [ft]	Vert Sect [ft]	North [ft]	East [ft]	Grid East [US ft]	Grid North [US ft]	Latitude	Longitude	DLS [°/100ft]	Comments
8323.00†	90.000	358.922	6373.00	1686.44	1592.19	970.72	3315826.59	1357969.47	40.3104904	-104.3674794	0.00	
8423.00†	90.000	358.922	6373.00	1785.65	1692.18	968.83	3315823.44	1358069.42	40.3107649	-104.3674861	0.00	
8523.00†	90.000	358.922	6373.00	1884.87	1792.16	966.95	3315820.28	1358169.36	40.3110393	-104.3674928	0.00	
8623.00†	90.000	358.922	6373.00	1984.08	1892.14	965.07	3315817.13	1358269.31	40.3113138	-104.3674996	0.00	
8723.00†	90.000	358.922	6373.00	2083.30	1992.12	963.19	3315813.98	1358369.26	40.3115882	-104.3675063	0.00	
8823.00†	90.000	358.922	6373.00	2182.51	2092.11	961.31	3315810.82	1358469.20	40.3118627	-104.3675130	0.00	
8923.00†	90.000	358.922	6373.00	2281.73	2192.09	959.43	3315807.67	1358569.15	40.3121371	-104.3675198	0.00	
9023.00†	90.000	358.922	6373.00	2380.94	2292.07	957.54	3315804.51	1358669.09	40.3124115	-104.3675265	0.00	
9123.00†	90.000	358.922	6373.00	2480.16	2392.05	955.66	3315801.36	1358769.04	40.3126860	-104.3675332	0.00	
9223.00†	90.000	358.922	6373.00	2579.37	2492.03	953.78	3315798.20	1358868.98	40.3129604	-104.3675400	0.00	
9323.00†	90.000	358.922	6373.00	2678.59	2592.02	951.90	3315795.05	1358968.93	40.3132349	-104.3675467	0.00	
9423.00†	90.000	358.922	6373.00	2777.80	2692.00	950.02	3315791.89	1359068.88	40.3135093	-104.3675534	0.00	
9523.00†	90.000	358.922	6373.00	2877.01	2791.98	948.14	3315788.74	1359168.82	40.3137838	-104.3675602	0.00	
9623.00†	90.000	358.922	6373.00	2976.23	2891.96	946.25	3315785.59	1359268.77	40.3140582	-104.3675669	0.00	
9723.00†	90.000	358.922	6373.00	3075.44	2991.95	944.37	3315782.43	1359368.71	40.3143327	-104.3675736	0.00	
9823.00†	90.000	358.922	6373.00	3174.66	3091.93	942.49	3315779.28	1359468.66	40.3146071	-104.3675804	0.00	
9923.00†	90.000	358.922	6373.00	3273.87	3191.91	940.61	3315776.12	1359568.61	40.3148816	-104.3675871	0.00	
10023.00†	90.000	358.922	6373.00	3373.09	3291.89	938.73	3315772.97	1359668.55	40.3151560	-104.3675938	0.00	
10123.00†	90.000	358.922	6373.00	3472.30	3391.87	936.85	3315769.81	1359768.50	40.3154304	-104.3676006	0.00	
10223.00†	90.000	358.922	6373.00	3571.52	3491.86	934.96	3315766.66	1359868.44	40.3157049	-104.3676073	0.00	
10323.00†	90.000	358.922	6373.00	3670.73	3591.84	933.08	3315763.50	1359968.39	40.3159793	-104.3676140	0.00	
10423.00†	90.000	358.922	6373.00	3769.95	3691.82	931.20	3315760.35	1360068.33	40.3162538	-104.3676208	0.00	
10523.00†	90.000	358.922	6373.00	3869.16	3791.80	929.32	3315757.20	1360168.28	40.3165282	-104.3676275	0.00	
10623.00†	90.000	358.922	6373.00	3968.37	3891.79	927.44	3315754.04	1360268.23	40.3168027	-104.3676342	0.00	
10723.00†	90.000	358.922	6373.00	4067.59	3991.77	925.56	3315750.89	1360368.17	40.3170771	-104.3676410	0.00	
10823.00†	90.000	358.922	6373.00	4166.80	4091.75	923.67	3315747.73	1360468.12	40.3173516	-104.3676477	0.00	
10923.00†	90.000	358.922	6373.00	4266.02	4191.73	921.79	3315744.58	1360568.06	40.3176260	-104.3676544	0.00	
11023.00†	90.000	358.922	6373.00	4365.23	4291.72	919.91	3315741.42	1360668.01	40.3179005	-104.3676612	0.00	
11123.00†	90.000	358.922	6373.00	4464.45	4391.70	918.03	3315738.27	1360767.95	40.3181749	-104.3676679	0.00	
11223.00†	90.000	358.922	6373.00	4563.66	4491.68	916.15	3315735.12	1360867.90	40.3184493	-104.3676746	0.00	



# Planned Wellpath Report

Middlepark 18-8-3L PWP Rev-A.0

Page 6 of 10

## REFERENCE WELLPATH IDENTIFICATION

Operator	CONFLUENCE RESOURCES	Well	Middlepark 18-8-3L
Field	WELD COUNTY (NAD83, TRUE NORTH)	API	0512347459
Facility	SEC.18-T04N-R62W	Wellbore	Middlepark 18-8-3L PWB
Slot	SLOT#08 Middlepark 18-8-3L (340'FSL & 1558'FWL,SEC.18)		

## WELLPATH DATA (176 stations) † = interpolated, ‡ = extrapolated station

MD [ft]	Inclination [°]	Azimuth [°]	TVD [ft]	Vert Sect [ft]	North [ft]	East [ft]	Grid East [US ft]	Grid North [US ft]	Latitude	Longitude	DLS [°/100ft]	Comments
11323.00†	90.000	358.922	6373.00	4662.88	4591.66	914.26	3315731.96	1360967.85	40.3187238	-104.3676814	0.00	
11423.00†	90.000	358.922	6373.00	4762.09	4691.64	912.38	3315728.81	1361067.79	40.3189982	-104.3676881	0.00	
11523.00†	90.000	358.922	6373.00	4861.30	4791.63	910.50	3315725.65	1361167.74	40.3192727	-104.3676949	0.00	
11623.00†	90.000	358.922	6373.00	4960.52	4891.61	908.62	3315722.50	1361267.68	40.3195471	-104.3677016	0.00	
11723.00†	90.000	358.922	6373.00	5059.73	4991.59	906.74	3315719.34	1361367.63	40.3198216	-104.3677083	0.00	
11747.93	90.000	358.922	6373.00 <sup>2</sup>	5084.47	5016.52	906.27	3315718.56	1361392.55	40.3198900	-104.3677100	0.00	TP1
11823.00†	90.000	0.423	6373.00	5159.06	5091.58	905.84	3315717.17	1361467.60	40.3200960	-104.3677115	2.00	
11889.01	90.000	1.743	6373.00	5224.82	5157.59	907.09	3315717.58	1361533.61	40.3202772	-104.3677070	2.00	3D Arc (J)
11923.00†	90.000	1.743	6373.00	5258.71	5191.55	908.12	3315718.18	1361567.58	40.3203705	-104.3677033	0.00	
12023.00†	90.000	1.743	6373.00	5358.42	5291.51	911.16	3315719.95	1361667.56	40.3206448	-104.3676924	0.00	
12123.00†	90.000	1.743	6373.00	5458.13	5391.46	914.21	3315721.72	1361767.54	40.3209192	-104.3676815	0.00	
12223.00†	90.000	1.743	6373.00	5557.84	5491.42	917.25	3315723.49	1361867.52	40.3211936	-104.3676706	0.00	
12323.00†	90.000	1.743	6373.00	5657.55	5591.37	920.29	3315725.26	1361967.50	40.3214679	-104.3676596	0.00	
12423.00†	90.000	1.743	6373.00	5757.26	5691.32	923.33	3315727.03	1362067.48	40.3217423	-104.3676487	0.00	
12523.00†	90.000	1.743	6373.00	5856.97	5791.28	926.38	3315728.80	1362167.46	40.3220167	-104.3676378	0.00	
12623.00†	90.000	1.743	6373.00	5956.68	5891.23	929.42	3315730.57	1362267.44	40.3222910	-104.3676269	0.00	
12723.00†	90.000	1.743	6373.00	6056.39	5991.18	932.46	3315732.34	1362367.42	40.3225654	-104.3676159	0.00	
12823.00†	90.000	1.743	6373.00	6156.10	6091.14	935.50	3315734.11	1362467.40	40.3228398	-104.3676050	0.00	
12923.00†	90.000	1.743	6373.00	6255.81	6191.09	938.55	3315735.88	1362567.38	40.3231141	-104.3675941	0.00	
13023.00†	90.000	1.743	6373.00	6355.52	6291.05	941.59	3315737.65	1362667.36	40.3233885	-104.3675832	0.00	
13123.00†	90.000	1.743	6373.00	6455.23	6391.00	944.63	3315739.41	1362767.34	40.3236629	-104.3675722	0.00	
13223.00†	90.000	1.743	6373.00	6554.94	6490.95	947.67	3315741.18	1362867.32	40.3239372	-104.3675613	0.00	
13323.00†	90.000	1.743	6373.00	6654.65	6590.91	950.72	3315742.95	1362967.30	40.3242116	-104.3675504	0.00	
13423.00†	90.000	1.743	6373.00	6754.36	6690.86	953.76	3315744.72	1363067.28	40.3244860	-104.3675395	0.00	
13523.00†	90.000	1.743	6373.00	6854.07	6790.81	956.80	3315746.49	1363167.26	40.3247603	-104.3675285	0.00	
13623.00†	90.000	1.743	6373.00	6953.78	6890.77	959.84	3315748.26	1363267.24	40.3250347	-104.3675176	0.00	
13723.00†	90.000	1.743	6373.00	7053.49	6990.72	962.89	3315750.03	1363367.22	40.3253091	-104.3675067	0.00	
13823.00†	90.000	1.743	6373.00	7153.20	7090.68	965.93	3315751.80	1363467.20	40.3255834	-104.3674958	0.00	
13923.00†	90.000	1.743	6373.00	7252.91	7190.63	968.97	3315753.57	1363567.18	40.3258578	-104.3674848	0.00	
14023.00†	90.000	1.743	6373.00	7352.62	7290.58	972.01	3315755.34	1363667.16	40.3261321	-104.3674739	0.00	

# Planned Wellpath Report

Middlepark 18-8-3L PWP Rev-A.0

Page 7 of 10

## REFERENCE WELLPATH IDENTIFICATION

Operator	CONFLUENCE RESOURCES	Well	Middlepark 18-8-3L
Field	WELD COUNTY (NAD83, TRUE NORTH)	API	0512347459
Facility	SEC.18-T04N-R62W	Wellbore	Middlepark 18-8-3L PWB
Slot	SLOT#08 Middlepark 18-8-3L (340'FSL & 1558'FWL,SEC.18)		

## WELLPATH DATA (176 stations) † = interpolated, ‡ = extrapolated station

MD [ft]	Inclination [°]	Azimuth [°]	TVD [ft]	Vert Sect [ft]	North [ft]	East [ft]	Grid East [US ft]	Grid North [US ft]	Latitude	Longitude	DLS [°/100ft]	Comments
14123.00†	90.000	1.743	6373.00	7452.33	7390.54	975.05	3315757.11	1363767.14	40.3264065	-104.3674630	0.00	
14223.00†	90.000	1.743	6373.00	7552.04	7490.49	978.10	3315758.88	1363867.12	40.3266809	-104.3674521	0.00	
14323.00†	90.000	1.743	6373.00	7651.75	7590.44	981.14	3315760.65	1363967.10	40.3269552	-104.3674411	0.00	
14423.00†	90.000	1.743	6373.00	7751.46	7690.40	984.18	3315762.42	1364067.08	40.3272296	-104.3674302	0.00	
14523.00†	90.000	1.743	6373.00	7851.17	7790.35	987.22	3315764.19	1364167.06	40.3275040	-104.3674193	0.00	
14623.00†	90.000	1.743	6373.00	7950.88	7890.31	990.27	3315765.96	1364267.04	40.3277783	-104.3674084	0.00	
14723.00†	90.000	1.743	6373.00	8050.59	7990.26	993.31	3315767.73	1364367.02	40.3280527	-104.3673974	0.00	
14823.00†	90.000	1.743	6373.00	8150.30	8090.21	996.35	3315769.50	1364467.00	40.3283271	-104.3673865	0.00	
14923.00†	90.000	1.743	6373.00	8250.01	8190.17	999.39	3315771.27	1364566.98	40.3286014	-104.3673756	0.00	
15023.00†	90.000	1.743	6373.00	8349.72	8290.12	1002.44	3315773.03	1364666.96	40.3288758	-104.3673647	0.00	
15123.00†	90.000	1.743	6373.00	8449.43	8390.07	1005.48	3315774.80	1364766.94	40.3291502	-104.3673537	0.00	
15223.00†	90.000	1.743	6373.00	8549.14	8490.03	1008.52	3315776.57	1364866.92	40.3294245	-104.3673428	0.00	
15323.00†	90.000	1.743	6373.00	8648.85	8589.98	1011.56	3315778.34	1364966.90	40.3296989	-104.3673319	0.00	
15423.00†	90.000	1.743	6373.00	8748.56	8689.93	1014.61	3315780.11	1365066.88	40.3299733	-104.3673209	0.00	
15523.00†	90.000	1.743	6373.00	8848.27	8789.89	1017.65	3315781.88	1365166.86	40.3302476	-104.3673100	0.00	
15623.00†	90.000	1.743	6373.00	8947.98	8889.84	1020.69	3315783.65	1365266.84	40.3305220	-104.3672991	0.00	
15723.00†	90.000	1.743	6373.00	9047.69	8989.80	1023.73	3315785.42	1365366.82	40.3307964	-104.3672882	0.00	
15823.00†	90.000	1.743	6373.00	9147.40	9089.75	1026.78	3315787.19	1365466.80	40.3310707	-104.3672772	0.00	
15923.00†	90.000	1.743	6373.00	9247.11	9189.70	1029.82	3315788.96	1365566.78	40.3313451	-104.3672663	0.00	
16023.00†	90.000	1.743	6373.00	9346.82	9289.66	1032.86	3315790.73	1365666.76	40.3316195	-104.3672554	0.00	
16123.00†	90.000	1.743	6373.00	9446.53	9389.61	1035.90	3315792.50	1365766.74	40.3318938	-104.3672445	0.00	
16223.00†	90.000	1.743	6373.00	9546.24	9489.56	1038.95	3315794.27	1365866.72	40.3321682	-104.3672335	0.00	
16323.00†	90.000	1.743	6373.00	9645.95	9589.52	1041.99	3315796.04	1365966.70	40.3324426	-104.3672226	0.00	
16423.00†	90.000	1.743	6373.00	9745.66	9689.47	1045.03	3315797.81	1366066.68	40.3327169	-104.3672117	0.00	
16523.00†	90.000	1.743	6373.00	9845.37	9789.43	1048.07	3315799.58	1366166.66	40.3329913	-104.3672007	0.00	
16529.82	90.000	1.743	6373.00 <sup>3</sup>	9852.17	9796.24	1048.28	3315799.70	1366173.48	40.3330100	-104.3672000	0.00	TD



# Planned Wellpath Report

Middlepark 18-8-3L PWP Rev-A.0

Page 8 of 10

## REFERENCE WELLPATH IDENTIFICATION

Operator	CONFLUENCE RESOURCES	Well	Middlepark 18-8-3L
Field	WELD COUNTY (NAD83, TRUE NORTH)	API	0512347459
Facility	SEC.18-T04N-R62W	Wellbore	Middlepark 18-8-3L PWB
Slot	SLOT#08 Middlepark 18-8-3L (340'FSL & 1558'FWL,SEC.18)		

## HOLE & CASING SECTIONS

- Ref Wellbore: Middlepark 18-8-3L PWB      Ref Wellpath: Middlepark 18-8-3L PWP Rev-A.0

String/Diameter	Start MD [ft]	End MD [ft]	Interval [ft]	Start TVD [ft]	End TVD [ft]	Start N/S [ft]	Start E/W [ft]	End N/S [ft]	End E/W [ft]
9.625in Casing Surface	23.00	1670.35	1647.35	23.00	1650.00	0.00	0.00	-109.01	195.31

## TARGETS

Name	MD [ft]	TVD [ft]	North [ft]	East [ft]	Grid East [US ft]	Grid North [US ft]	Latitude	Longitude	Shape
SEC.07-T04N-R62W	N/A	0.00	-138.44	105.99	3314984.00	1356228.05	40.3057400	-104.3705800	polygon
	2D Polygon: dimensions not calculated								
SEC.07/18-T04N-R62W (SB 470')	N/A	0.00	-138.44	105.99	3314984.00	1356228.05	40.3057400	-104.3705800	polygon
	2D Polygon: dimensions not calculated								
SEC.18-T04N-R62W	N/A	0.00	-138.44	105.99	3314984.00	1356228.05	40.3057400	-104.3705800	polygon
	2D Polygon: dimensions not calculated								
3) Middlepark 18-8-3L BHL REV-1 (470'FNL & 2355'FEL,SEC.07)	16529.82	6373.00	9796.24	1048.28	3315799.70	1366173.48	40.3330100	-104.3672000	point
1) Middlepark 18-8-3L LP REV-1 (470'FSL & 2558'FWL,SEC.18)	6847.14	6373.00	116.60	998.49	3315873.15	1356494.42	40.3064400	-104.3673800	point
2) Middlepark 18-8-3L TP1 REV-1 (0'FNL & 2531'FWL,SEC.18)	11747.93	6373.00	5016.52	906.27	3315718.56	1361392.55	40.3198900	-104.3677100	point

# Planned Wellpath Report

Middlepark 18-8-3L PWP Rev-A.0

Page 9 of 10

REFERENCE WELLPATH IDENTIFICATION			
Operator	CONFLUENCE RESOURCES	Well	Middlepark 18-8-3L
Field	WELD COUNTY (NAD83, TRUE NORTH)	API	0512347459
Facility	SEC.18-T04N-R62W	Wellbore	Middlepark 18-8-3L PWB
Slot	SLOT#08 Middlepark 18-8-3L (340'FSL & 1558'FWL,SEC.18)		

SURVEY PROGRAM - Ref Wellbore: Middlepark 18-8-3L PWB Ref Wellpath: Middlepark 18-8-3L PWP Rev-A.0				
Start MD [ft]	End MD [ft]	Positional Uncertainty Model	Log Name/Comment	Wellbore
23.00	1670.35	BH NaviTrak (2019) (Axial)		Middlepark 18-8-3L PWB
1670.35	16529.82	BH AutoTrak Curve/eXpress (2019) (Short spacing)		Middlepark 18-8-3L PWB

# Planned Wellpath Report

Middlepark 18-8-3L PWP Rev-A.0

Page 10 of 10

## REFERENCE WELLPATH IDENTIFICATION

Operator	CONFLUENCE RESOURCES	Well	Middlepark 18-8-3L
Field	WELD COUNTY (NAD83, TRUE NORTH)	API	0512347459
Facility	SEC.18-T04N-R62W	Wellbore	Middlepark 18-8-3L PWB
Slot	SLOT#08 Middlepark 18-8-3L (340'FSL & 1558'FWL,SEC.18)		

## DESIGN COMMENTS

MD [ft]	Inclination [°]	Azimuth [°]	TVD [ft]	Comment
23.00	0.000	118.000	23.00	Tie On
250.00	0.000	118.000	250.00	End of Tangent
817.00	11.340	118.000	813.31	End of Build (J)
1117.00	11.340	118.000	1107.45	End of Tangent (J)
1141.15	11.340	120.456	1131.12	Build (XS)
5781.56	11.340	120.456	5680.95	KOP
6847.14	90.000	358.922	6373.00	LANDING
11747.93	90.000	358.922	6373.00	TP1
11889.01	90.000	1.743	6373.00	3D Arc (J)
16529.82	90.000	1.743	6373.00	TD