

CONFLUENCE RESOURCES



Location: COLORADO Slot: SLOTR05 Middlepark 18-6-2L (281FSL & 1603FWL,SEC.18)

Field: WELD COUNTY (NAD83, TRUE NORTH) Well: Middlepark 18-6-2L

Facility: SEC.18-T04N-R62W Wellbore: Middlepark 18-6-2L PWB

Plot reference wellpath is Middlepark 18-6-2L PWP RevA.0

True vertical depths are referenced to Rig (23) (KB)

Reference wellpath measured depths are referenced to Rig (23) (KB)

Rig (23) (KB) to Mean Sea Level: 4586 feet

Mean Sea Level to Mud line (At Slot: SLOTR05 Middlepark 18-6-2L (281FSL & 1603FWL,SEC.18)): 0 feet

Offset wellpath MDs are referenced to each path's default MD datum

Created by: painsetr on 2021-12-01; Database: WellArchitectDB

Location Information

Facility Name	Grid East (US ft)	Grid North (US ft)	Latitude	Longitude
SEC.18-T04N-R62W	3314967.040	1356246.051	40.3057900°	-104.3706400°
Slot	Local N (ft)	Local E (ft)	Grid East (US ft)	Grid North (US ft)
SLOTR05 Middlepark 18-6-2L (281FSL & 1603FWL,SEC.18)	58.29	-44.83	3314921.678	1356303.765
Rig (23) (KB) to Mud line (At Slot: SLOTR05 Middlepark 18-6-2L (281FSL & 1603FWL,SEC.18))				
Mean Sea Level to Mud line (At Slot: SLOTR05 Middlepark 18-6-2L (281FSL & 1603FWL,SEC.18))				
Rig (23) (KB) to Mean Sea Level				

Hole and Casing Sections

Name	Start MD (ft)	End MD (ft)	Interval (ft)	Start TVD (ft)	End TVD (ft)	Start Local N (ft)	Start Local E (ft)	End Local N (ft)	End Local E (ft)	Wellbore
9.625in Casing Surface	23.00	1691.80	1668.80	23.00	1650.00	0.00	0.00	-89.40	296.12	Middlepark 18-6-2L PWB

Survey Program

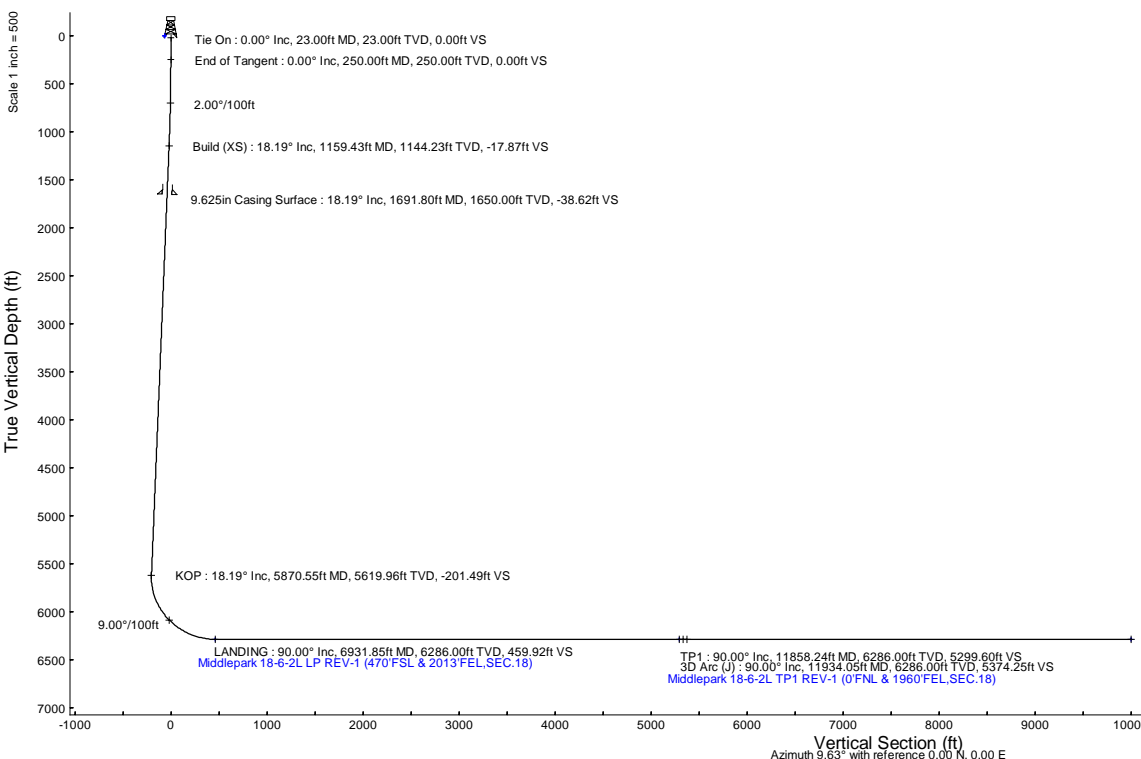
Start MD (ft)	End MD (ft)	Tool	Model	Log Name/Comment	Wellbore
23.00	1691.80	BH NavTrak (2019)	BH NavTrak (2019) (Axial)		Middlepark 18-6-2L PWB
1691.80	16623.49	BH AutoTrak CurveLogpress (2019)	BH AutoTrak CurveLogpress (2019) (Short spacing)		Middlepark 18-6-2L PWB

Bottom Hole Location

MD (ft)	Inc (°)	Az (°)	TVD (ft)	Local N (ft)	Local E (ft)	Grid East (US ft)	Grid North (US ft)	Latitude	Longitude
16623.49	90.000	0.377	6286.00	9861.85	1672.79	3316468.68	1366185.67	40.3330200°	-104.3648000°

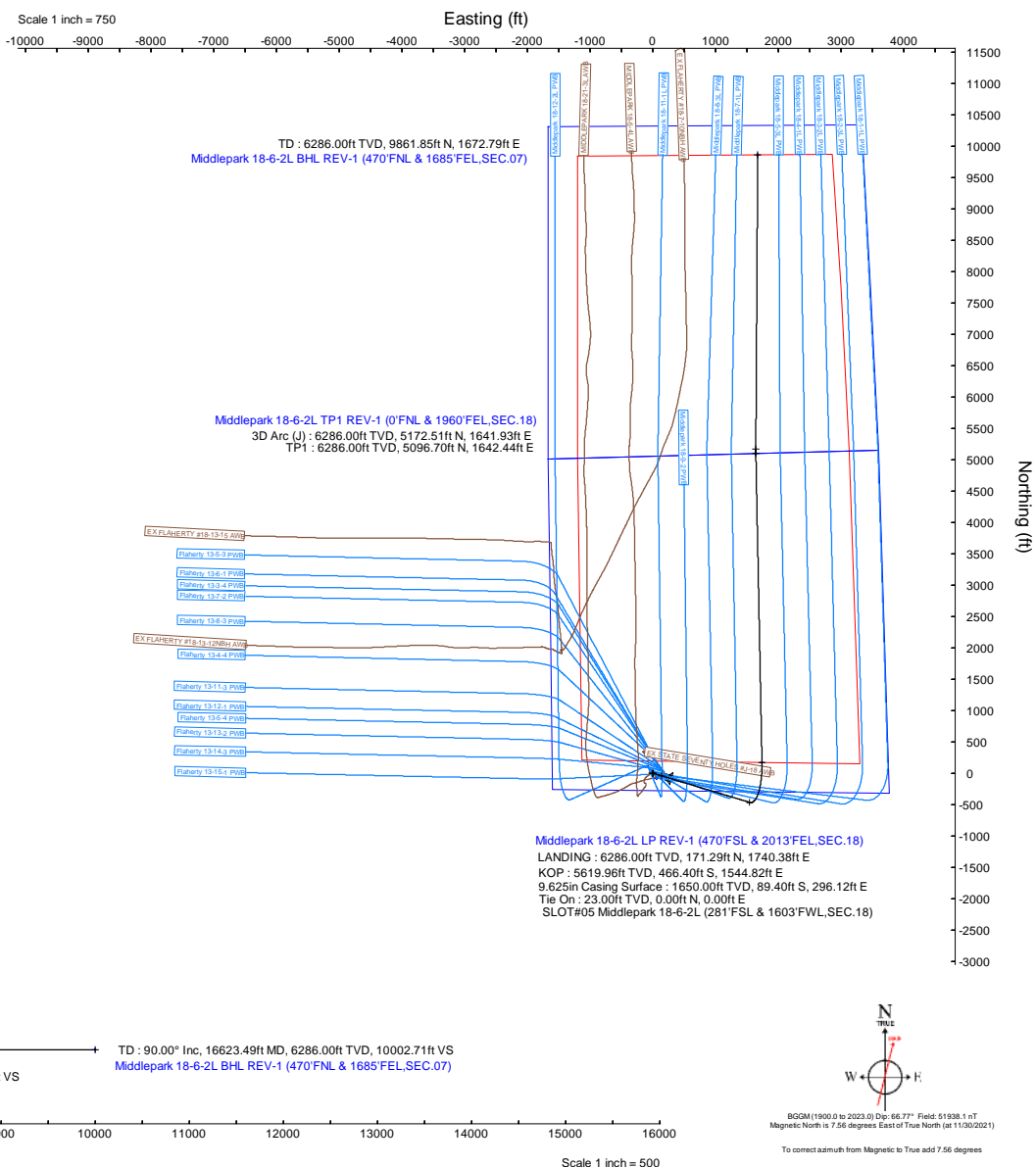
Targets

Name	MD (ft)	TVD (ft)	Local N (ft)	Local E (ft)	Grid East (US ft)	Grid North (US ft)	Latitude	Longitude
SEC.07-T04N-R62W	N/A	0.00	-76.50	61.36	3314984.00	1356228.05	40.3057400°	-104.3705800°
SEC.07-18-T04N-R62W (SB 470)	N/A	0.00	-76.50	61.36	3314984.00	1356228.05	40.3057400°	-104.3705800°
SEC.18-T04N-R62W	N/A	0.00	-76.50	61.36	3314984.00	1356228.05	40.3057400°	-104.3705800°
Middlepark 18-6-2L BHL REV-1 (470FNL & 1685FEL,SEC.07)	16623.49	6286.00	9861.85	1672.79	3316468.68	1366185.67	40.3330200°	-104.3648000°
Middlepark 18-6-2L LP REV-1 (470FSL & 2013FEL,SEC.18)	6931.85	6286.00	171.29	1740.38	3316655.66	1356497.19	40.3064200°	-104.3645600°
Middlepark 18-6-2L TP1 REV-1 (0FNL & 1960FEL,SEC.18)	11858.24	6286.00	5096.70	1642.44	3316498.01	1361420.74	40.3199400°	-104.3649100°



Well Profile Data

Design Comment	MD (ft)	Inc (°)	Az (°)	TVD (ft)	Local N (ft)	Local E (ft)	DLS (°/100ft)	VS (ft)
Tie On	23.00	0.000	106.800	23.00	0.00	0.00	0.00	0.00
End of Tangent	250.00	0.000	106.800	250.00	0.00	0.00	0.00	0.00
Build (XS)	1159.43	18.189	106.800	1144.23	-41.37	137.03	2.00	-17.87
KOP	5870.55	18.189	106.800	5619.96	-466.40	1544.82	0.00	-201.49
LANDING	6931.85	90.000	358.861	6286.00	171.29	1740.38	9.00	459.92
TP1	11858.24	90.000	358.861	6286.00	5096.70	1642.44	0.00	5299.60
3D Arc (J)	11934.05	90.000	0.377	6286.00	5172.51	1641.93	2.00	5374.25
TD	16623.49	90.000	0.377	6286.00	9861.85	1672.79	0.00	10002.71



BGGM (1900.0 to 2023.0) Dip: 66.77° Field: 51938.1 mT
Magnetic North is 7.56 degrees East of True North (at 11/30/2021)
To correct azimuth from Magnetic to True add 7.56 degrees

Planned Wellpath Report

Middlepark 18-6-2L PWP Rev-A.0

Page 1 of 10

REFERENCE WELLPATH IDENTIFICATION

Operator	CONFLUENCE RESOURCES	Well	Middlepark 18-6-2L
Field	WELD COUNTY (NAD83, TRUE NORTH)	API	0512347457
Facility	SEC.18-T04N-R62W	Wellbore	Middlepark 18-6-2L PWB
Slot	SLOT#05 Middlepark 18-6-2L (281'FSL & 1603'FWL,SEC.18)		

REPORT SETUP INFORMATION

Projection System	NAD83 / Lambert Colorado SP, Northern Zone (501), US feet	Software System	WellArchitect® 6.0
North Reference	True	User	Painsetr
Scale	0.999957	Report Generated	12/1/2021 at 8:19:10 PM
Convergence at slot	0.73° East	Database	WellArchitectDB

WELLPATH LOCATION

	Local coordinates		Grid coordinates		Geographic coordinates	
	North[ft]	East[ft]	Easting[US ft]	Northing[US ft]	Latitude	Longitude
Slot Location	58.29	-44.63	3314921.68	1356303.77	40.3059500°	-104.3708000°
Facility Reference Pt			3314967.04	1356246.05	40.3057900°	-104.3706400°
Field Reference Pt			3230456.90	1245096.09	40.0032400°	-104.6773400°

WELLPATH DATUM

Calculation method	Minimum curvature	Rig (23') (KB) to Facility Vertical Datum	4586.00ft
Horizontal Reference Pt	Slot	Rig (23') (KB) to Mean Sea Level	4586.00ft
Vertical Reference Pt	Rig (23') (KB)	Rig (23') (KB) to Mud Line at Slot (SLOT#05 Middlepark 18-6-2L (281'FSL & 1603'FWL,SEC.18))	4586.00ft
MD Reference Pt	Rig (23') (KB)	Section Origin	N 0.00, E 0.00 ft
Field Vertical Reference	Mean Sea Level	Section Azimuth	9.63°

Planned Wellpath Report

Middlepark 18-6-2L PWP Rev-A.0

Page 2 of 10

REFERENCE WELLPATH IDENTIFICATION

Operator	CONFLUENCE RESOURCES	Well	Middlepark 18-6-2L
Field	WELD COUNTY (NAD83, TRUE NORTH)	API	0512347457
Facility	SEC.18-T04N-R62W	Wellbore	Middlepark 18-6-2L PWB
Slot	SLOT#05 Middlepark 18-6-2L (281'FSL & 1603'FWL,SEC.18)		

WELLPATH DATA (175 stations) † = interpolated, ‡ = extrapolated station

MD [ft]	Inclination [°]	Azimuth [°]	TVD [ft]	Vert Sect [ft]	North [ft]	East [ft]	Grid East [US ft]	Grid North [US ft]	Latitude	Longitude	DLS [°/100ft]	Comments
0.00†	0.000	106.800	0.00	0.00	0.00	0.00	3314921.68	1356303.76	40.3059500	-104.3708000	0.00	
23.00	0.000	106.800	23.00	0.00	0.00	0.00	3314921.68	1356303.76	40.3059500	-104.3708000	0.00	Tie On
123.00†	0.000	106.800	123.00	0.00	0.00	0.00	3314921.68	1356303.76	40.3059500	-104.3708000	0.00	
223.00†	0.000	106.800	223.00	0.00	0.00	0.00	3314921.68	1356303.76	40.3059500	-104.3708000	0.00	
250.00	0.000	106.800	250.00	0.00	0.00	0.00	3314921.68	1356303.76	40.3059500	-104.3708000	0.00	End of Tangent
323.00†	1.460	106.800	322.99	-0.12	-0.27	0.89	3314922.57	1356303.51	40.3059493	-104.3707968	2.00	
423.00†	3.460	106.800	422.89	-0.65	-1.51	5.00	3314926.70	1356302.32	40.3059459	-104.3707821	2.00	
523.00†	5.460	106.800	522.59	-1.62	-3.76	12.44	3314934.17	1356300.17	40.3059397	-104.3707554	2.00	
623.00†	7.460	106.800	621.95	-3.03	-7.01	23.21	3314944.98	1356297.05	40.3059308	-104.3707168	2.00	
723.00†	9.460	106.800	720.85	-4.86	-11.26	37.30	3314959.11	1356292.98	40.3059191	-104.3706663	2.00	
823.00†	11.460	106.800	819.19	-7.13	-16.51	54.68	3314976.56	1356287.96	40.3059047	-104.3706040	2.00	
923.00†	13.460	106.800	916.83	-9.82	-22.74	75.33	3314997.29	1356281.98	40.3058876	-104.3705299	2.00	
1023.00†	15.460	106.800	1013.65	-12.94	-29.96	99.23	3315021.28	1356275.07	40.3058678	-104.3704442	2.00	
1123.00†	17.460	106.800	1109.55	-16.48	-38.15	126.36	3315048.50	1356267.23	40.3058453	-104.3703470	2.00	
1159.43	18.189	106.800	1144.23	-17.87	-41.37	137.03	3315059.22	1356264.14	40.3058364	-104.3703087	2.00	Build (XS)
1223.00†	18.189	106.800	1204.63	-20.35	-47.11	156.03	3315078.29	1356258.65	40.3058207	-104.3702406	0.00	
1323.00†	18.189	106.800	1299.63	-24.25	-56.13	185.91	3315108.28	1356250.01	40.3057959	-104.3701334	0.00	
1423.00†	18.189	106.800	1394.63	-28.15	-65.15	215.79	3315138.27	1356241.37	40.3057712	-104.3700263	0.00	
1523.00†	18.189	106.800	1489.64	-32.04	-74.17	245.68	3315168.27	1356232.73	40.3057464	-104.3699192	0.00	
1623.00†	18.189	106.800	1584.64	-35.94	-83.19	275.56	3315198.26	1356224.09	40.3057216	-104.3698120	0.00	
1723.00†	18.189	106.800	1679.64	-39.84	-92.22	305.44	3315228.25	1356215.45	40.3056969	-104.3697049	0.00	
1823.00†	18.189	106.800	1774.65	-43.73	-101.24	335.32	3315258.25	1356206.81	40.3056721	-104.3695977	0.00	
1923.00†	18.189	106.800	1869.65	-47.63	-110.26	365.20	3315288.24	1356198.17	40.3056473	-104.3694906	0.00	
2023.00†	18.189	106.800	1964.65	-51.53	-119.28	395.09	3315318.23	1356189.53	40.3056226	-104.3693835	0.00	
2123.00†	18.189	106.800	2059.66	-55.43	-128.30	424.97	3315348.23	1356180.89	40.3055978	-104.3692763	0.00	
2223.00†	18.189	106.800	2154.66	-59.32	-137.32	454.85	3315378.22	1356172.25	40.3055730	-104.3691692	0.00	
2323.00†	18.189	106.800	2249.66	-63.22	-146.35	484.73	3315408.21	1356163.61	40.3055483	-104.3690620	0.00	
2423.00†	18.189	106.800	2344.67	-67.12	-155.37	514.62	3315438.21	1356154.97	40.3055235	-104.3689549	0.00	
2523.00†	18.189	106.800	2439.67	-71.02	-164.39	544.50	3315468.20	1356146.33	40.3054987	-104.3688478	0.00	
2623.00†	18.189	106.800	2534.67	-74.91	-173.41	574.38	3315498.19	1356137.69	40.3054740	-104.3687406	0.00	

Planned Wellpath Report

Middlepark 18-6-2L PWP Rev-A.0

Page 3 of 10

REFERENCE WELLPATH IDENTIFICATION

Operator	CONFLUENCE RESOURCES	Well	Middlepark 18-6-2L
Field	WELD COUNTY (NAD83, TRUE NORTH)	API	0512347457
Facility	SEC.18-T04N-R62W	Wellbore	Middlepark 18-6-2L PWB
Slot	SLOT#05 Middlepark 18-6-2L (281'FSL & 1603'FWL,SEC.18)		

WELLPATH DATA (175 stations) † = interpolated, ‡ = extrapolated station

MD [ft]	Inclination [°]	Azimuth [°]	TVD [ft]	Vert Sect [ft]	North [ft]	East [ft]	Grid East [US ft]	Grid North [US ft]	Latitude	Longitude	DLS [°/100ft]	Comments
2723.00†	18.189	106.800	2629.68	-78.81	-182.43	604.26	3315528.19	1356129.05	40.3054492	-104.3686335	0.00	
2823.00†	18.189	106.800	2724.68	-82.71	-191.46	634.15	3315558.18	1356120.41	40.3054244	-104.3685264	0.00	
2923.00†	18.189	106.800	2819.68	-86.61	-200.48	664.03	3315588.17	1356111.77	40.3053997	-104.3684192	0.00	
3023.00†	18.189	106.800	2914.69	-90.50	-209.50	693.91	3315618.17	1356103.13	40.3053749	-104.3683121	0.00	
3123.00†	18.189	106.800	3009.69	-94.40	-218.52	723.79	3315648.16	1356094.49	40.3053501	-104.3682049	0.00	
3223.00†	18.189	106.800	3104.69	-98.30	-227.54	753.67	3315678.15	1356085.85	40.3053254	-104.3680978	0.00	
3323.00†	18.189	106.800	3199.70	-102.20	-236.56	783.56	3315708.15	1356077.21	40.3053006	-104.3679907	0.00	
3423.00†	18.189	106.800	3294.70	-106.09	-245.59	813.44	3315738.14	1356068.57	40.3052758	-104.3678835	0.00	
3523.00†	18.189	106.800	3389.71	-109.99	-254.61	843.32	3315768.14	1356059.93	40.3052511	-104.3677764	0.00	
3623.00†	18.189	106.800	3484.71	-113.89	-263.63	873.20	3315798.13	1356051.29	40.3052263	-104.3676693	0.00	
3723.00†	18.189	106.800	3579.71	-117.79	-272.65	903.09	3315828.12	1356042.65	40.3052015	-104.3675621	0.00	
3823.00†	18.189	106.800	3674.72	-121.68	-281.67	932.97	3315858.12	1356034.01	40.3051768	-104.3674550	0.00	
3923.00†	18.189	106.800	3769.72	-125.58	-290.70	962.85	3315888.11	1356025.37	40.3051520	-104.3673478	0.00	
4023.00†	18.189	106.800	3864.72	-129.48	-299.72	992.73	3315918.10	1356016.73	40.3051272	-104.3672407	0.00	
4123.00†	18.189	106.800	3959.73	-133.38	-308.74	1022.62	3315948.10	1356008.09	40.3051025	-104.3671336	0.00	
4223.00†	18.189	106.800	4054.73	-137.27	-317.76	1052.50	3315978.09	1355999.45	40.3050777	-104.3670264	0.00	
4323.00†	18.189	106.800	4149.73	-141.17	-326.78	1082.38	3316008.08	1355990.81	40.3050529	-104.3669193	0.00	
4423.00†	18.189	106.800	4244.74	-145.07	-335.80	1112.26	3316038.08	1355982.16	40.3050282	-104.3668122	0.00	
4523.00†	18.189	106.800	4339.74	-148.97	-344.83	1142.14	3316068.07	1355973.52	40.3050034	-104.3667050	0.00	
4623.00†	18.189	106.800	4434.74	-152.86	-353.85	1172.03	3316098.06	1355964.88	40.3049786	-104.3665979	0.00	
4723.00†	18.189	106.800	4529.75	-156.76	-362.87	1201.91	3316128.06	1355956.24	40.3049539	-104.3664907	0.00	
4823.00†	18.189	106.800	4624.75	-160.66	-371.89	1231.79	3316158.05	1355947.60	40.3049291	-104.3663836	0.00	
4923.00†	18.189	106.800	4719.75	-164.56	-380.91	1261.67	3316188.04	1355938.96	40.3049043	-104.3662765	0.00	
5023.00†	18.189	106.800	4814.76	-168.45	-389.94	1291.56	3316218.04	1355930.32	40.3048796	-104.3661693	0.00	
5123.00†	18.189	106.800	4909.76	-172.35	-398.96	1321.44	3316248.03	1355921.68	40.3048548	-104.3660622	0.00	
5223.00†	18.189	106.800	5004.76	-176.25	-407.98	1351.32	3316278.02	1355913.04	40.3048300	-104.3659551	0.00	
5323.00†	18.189	106.800	5099.77	-180.15	-417.00	1381.20	3316308.02	1355904.40	40.3048052	-104.3658479	0.00	
5423.00†	18.189	106.800	5194.77	-184.04	-426.02	1411.09	3316338.01	1355895.76	40.3047805	-104.3657408	0.00	
5523.00†	18.189	106.800	5289.77	-187.94	-435.04	1440.97	3316368.00	1355887.12	40.3047557	-104.3656337	0.00	
5623.00†	18.189	106.800	5384.78	-191.84	-444.07	1470.85	3316398.00	1355878.48	40.3047309	-104.3655265	0.00	

Planned Wellpath Report

Middlepark 18-6-2L PWP Rev-A.0

Page 4 of 10

REFERENCE WELLPATH IDENTIFICATION

Operator	CONFLUENCE RESOURCES	Well	Middlepark 18-6-2L
Field	WELD COUNTY (NAD83, TRUE NORTH)	API	0512347457
Facility	SEC.18-T04N-R62W	Wellbore	Middlepark 18-6-2L PWB
Slot	SLOT#05 Middlepark 18-6-2L (281'FSL & 1603'FWL,SEC.18)		

WELLPATH DATA (175 stations) † = interpolated, ‡ = extrapolated station

MD [ft]	Inclination [°]	Azimuth [°]	TVD [ft]	Vert Sect [ft]	North [ft]	East [ft]	Grid East [US ft]	Grid North [US ft]	Latitude	Longitude	DLS [°/100ft]	Comments
5723.00†	18.189	106.800	5479.78	-195.73	-453.09	1500.73	3316427.99	1355869.84	40.3047062	-104.3654194	0.00	
5823.00†	18.189	106.800	5574.78	-199.63	-462.11	1530.61	3316457.98	1355861.20	40.3046814	-104.3653122	0.00	
5870.55	18.189	106.800	5619.96	-201.49	-466.40	1544.82	3316472.25	1355857.09	40.3046696	-104.3652613	0.00	KOP
5923.00†	17.376	91.528	5669.93	-201.40	-468.98	1560.50	3316487.95	1355854.72	40.3046626	-104.3652051	9.00	
6023.00†	19.145	63.070	5765.08	-189.51	-461.93	1590.11	3316517.47	1355862.14	40.3046819	-104.3650989	9.00	
6123.00†	24.251	42.799	5858.09	-162.50	-439.39	1618.74	3316545.81	1355885.04	40.3047438	-104.3649963	9.00	
6223.00†	31.089	30.086	5946.68	-121.03	-401.91	1645.69	3316572.28	1355922.86	40.3048466	-104.3648996	9.00	
6323.00†	38.749	21.784	6028.66	-66.13	-350.40	1670.30	3316596.23	1355974.68	40.3049880	-104.3648114	9.00	
6423.00†	46.826	15.915	6102.02	0.84	-286.14	1691.96	3316617.06	1356039.21	40.3051644	-104.3647337	9.00	
6523.00†	55.132	11.441	6164.94	78.25	-210.71	1710.13	3316634.27	1356114.86	40.3053715	-104.3646686	9.00	
6623.00†	63.571	7.799	6215.89	164.18	-125.97	1724.37	3316647.44	1356199.77	40.3056041	-104.3646175	9.00	
6723.00†	72.090	4.659	6253.60	256.52	-34.00	1734.33	3316656.22	1356291.85	40.3058565	-104.3645817	9.00	
6823.00†	80.654	1.810	6277.14	352.99	62.93	1739.77	3316660.42	1356388.84	40.3061226	-104.3645622	9.00	
6923.00†	89.240	359.098	6285.94	451.23	162.44	1740.54	3316659.93	1356488.35	40.3063957	-104.3645594	9.00	
6931.85	90.000	358.861	6286.00†	459.92	171.29	1740.38	3316659.66	1356497.19	40.3064200	-104.3645600	9.00	LANDING
7023.00†	90.000	358.861	6286.00	549.47	262.42	1738.57	3316656.69	1356588.29	40.3066702	-104.3645665	0.00	
7123.00†	90.000	358.861	6286.00	647.71	362.40	1736.58	3316653.43	1356688.23	40.3069446	-104.3645736	0.00	
7223.00†	90.000	358.861	6286.00	745.95	462.38	1734.59	3316650.16	1356788.17	40.3072190	-104.3645807	0.00	
7323.00†	90.000	358.861	6286.00	844.19	562.36	1732.60	3316646.90	1356888.12	40.3074935	-104.3645878	0.00	
7423.00†	90.000	358.861	6286.00	942.43	662.34	1730.62	3316643.64	1356988.06	40.3077679	-104.3645949	0.00	
7523.00†	90.000	358.861	6286.00	1040.67	762.32	1728.63	3316640.38	1357088.00	40.3080424	-104.3646020	0.00	
7623.00†	90.000	358.861	6286.00	1138.91	862.30	1726.64	3316637.12	1357187.94	40.3083168	-104.3646091	0.00	
7723.00†	90.000	358.861	6286.00	1237.15	962.28	1724.65	3316633.86	1357287.88	40.3085912	-104.3646162	0.00	
7823.00†	90.000	358.861	6286.00	1335.39	1062.26	1722.66	3316630.60	1357387.83	40.3088657	-104.3646233	0.00	
7923.00†	90.000	358.861	6286.00	1433.63	1162.24	1720.68	3316627.34	1357487.77	40.3091401	-104.3646304	0.00	
8023.00†	90.000	358.861	6286.00	1531.87	1262.22	1718.69	3316624.08	1357587.71	40.3094146	-104.3646375	0.00	
8123.00†	90.000	358.861	6286.00	1630.11	1362.20	1716.70	3316620.82	1357687.65	40.3096890	-104.3646446	0.00	
8223.00†	90.000	358.861	6286.00	1728.35	1462.18	1714.71	3316617.55	1357787.60	40.3099634	-104.3646517	0.00	
8323.00†	90.000	358.861	6286.00	1826.59	1562.16	1712.72	3316614.29	1357887.54	40.3102379	-104.3646588	0.00	
8423.00†	90.000	358.861	6286.00	1924.83	1662.14	1710.73	3316611.03	1357987.48	40.3105123	-104.3646659	0.00	

Planned Wellpath Report

Middlepark 18-6-2L PWP Rev-A.0

Page 5 of 10

REFERENCE WELLPATH IDENTIFICATION

Operator	CONFLUENCE RESOURCES	Well	Middlepark 18-6-2L
Field	WELD COUNTY (NAD83, TRUE NORTH)	API	0512347457
Facility	SEC.18-T04N-R62W	Wellbore	Middlepark 18-6-2L PWB
Slot	SLOT#05 Middlepark 18-6-2L (281'FSL & 1603'FWL,SEC.18)		

WELLPATH DATA (175 stations) † = interpolated, ‡ = extrapolated station

MD [ft]	Inclination [°]	Azimuth [°]	TVD [ft]	Vert Sect [ft]	North [ft]	East [ft]	Grid East [US ft]	Grid North [US ft]	Latitude	Longitude	DLS [°/100ft]	Comments
8523.00†	90.000	358.861	6286.00	2023.07	1762.12	1708.75	3316607.77	1358087.42	40.3107868	-104.3646730	0.00	
8623.00†	90.000	358.861	6286.00	2121.31	1862.10	1706.76	3316604.51	1358187.37	40.3110612	-104.3646801	0.00	
8723.00†	90.000	358.861	6286.00	2219.55	1962.08	1704.77	3316601.25	1358287.31	40.3113356	-104.3646872	0.00	
8823.00†	90.000	358.861	6286.00	2317.79	2062.06	1702.78	3316597.99	1358387.25	40.3116101	-104.3646943	0.00	
8923.00†	90.000	358.861	6286.00	2416.03	2162.04	1700.79	3316594.73	1358487.19	40.3118845	-104.3647014	0.00	
9023.00†	90.000	358.861	6286.00	2514.27	2262.02	1698.81	3316591.47	1358587.14	40.3121590	-104.3647086	0.00	
9123.00†	90.000	358.861	6286.00	2612.51	2362.00	1696.82	3316588.21	1358687.08	40.3124334	-104.3647157	0.00	
9223.00†	90.000	358.861	6286.00	2710.74	2461.98	1694.83	3316584.94	1358787.02	40.3127078	-104.3647228	0.00	
9323.00†	90.000	358.861	6286.00	2808.98	2561.96	1692.84	3316581.68	1358886.96	40.3129823	-104.3647299	0.00	
9423.00†	90.000	358.861	6286.00	2907.22	2661.94	1690.85	3316578.42	1358986.90	40.3132567	-104.3647370	0.00	
9523.00†	90.000	358.861	6286.00	3005.46	2761.92	1688.87	3316575.16	1359086.85	40.3135312	-104.3647441	0.00	
9623.00†	90.000	358.861	6286.00	3103.70	2861.90	1686.88	3316571.90	1359186.79	40.3138056	-104.3647512	0.00	
9723.00†	90.000	358.861	6286.00	3201.94	2961.89	1684.89	3316568.64	1359286.73	40.3140800	-104.3647583	0.00	
9823.00†	90.000	358.861	6286.00	3300.18	3061.87	1682.90	3316565.38	1359386.67	40.3143545	-104.3647654	0.00	
9923.00†	90.000	358.861	6286.00	3398.42	3161.85	1680.91	3316562.12	1359486.62	40.3146289	-104.3647725	0.00	
10023.00†	90.000	358.861	6286.00	3496.66	3261.83	1678.92	3316558.86	1359586.56	40.3149034	-104.3647796	0.00	
10123.00†	90.000	358.861	6286.00	3594.90	3361.81	1676.94	3316555.60	1359686.50	40.3151778	-104.3647867	0.00	
10223.00†	90.000	358.861	6286.00	3693.14	3461.79	1674.95	3316552.34	1359786.44	40.3154522	-104.3647938	0.00	
10323.00†	90.000	358.861	6286.00	3791.38	3561.77	1672.96	3316549.07	1359886.39	40.3157267	-104.3648009	0.00	
10423.00†	90.000	358.861	6286.00	3889.62	3661.75	1670.97	3316545.81	1359986.33	40.3160011	-104.3648080	0.00	
10523.00†	90.000	358.861	6286.00	3987.86	3761.73	1668.98	3316542.55	1360086.27	40.3162756	-104.3648151	0.00	
10623.00†	90.000	358.861	6286.00	4086.10	3861.71	1667.00	3316539.29	1360186.21	40.3165500	-104.3648222	0.00	
10723.00†	90.000	358.861	6286.00	4184.34	3961.69	1665.01	3316536.03	1360286.15	40.3168244	-104.3648293	0.00	
10823.00†	90.000	358.861	6286.00	4282.58	4061.67	1663.02	3316532.77	1360386.10	40.3170989	-104.3648364	0.00	
10923.00†	90.000	358.861	6286.00	4380.82	4161.65	1661.03	3316529.51	1360486.04	40.3173733	-104.3648435	0.00	
11023.00†	90.000	358.861	6286.00	4479.06	4261.63	1659.04	3316526.25	1360585.98	40.3176478	-104.3648506	0.00	
11123.00†	90.000	358.861	6286.00	4577.30	4361.61	1657.05	3316522.99	1360685.92	40.3179222	-104.3648578	0.00	
11223.00†	90.000	358.861	6286.00	4675.54	4461.59	1655.07	3316519.73	1360785.87	40.3181966	-104.3648649	0.00	
11323.00†	90.000	358.861	6286.00	4773.78	4561.57	1653.08	3316516.46	1360885.81	40.3184711	-104.3648720	0.00	
11423.00†	90.000	358.861	6286.00	4872.02	4661.55	1651.09	3316513.20	1360985.75	40.3187455	-104.3648791	0.00	

Planned Wellpath Report

Middlepark 18-6-2L PWP Rev-A.0

Page 6 of 10

REFERENCE WELLPATH IDENTIFICATION

Operator	CONFLUENCE RESOURCES	Well	Middlepark 18-6-2L
Field	WELD COUNTY (NAD83, TRUE NORTH)	API	0512347457
Facility	SEC.18-T04N-R62W	Wellbore	Middlepark 18-6-2L PWB
Slot	SLOT#05 Middlepark 18-6-2L (281'FSL & 1603'FWL,SEC.18)		

WELLPATH DATA (175 stations) † = interpolated, ‡ = extrapolated station

MD [ft]	Inclination [°]	Azimuth [°]	TVD [ft]	Vert Sect [ft]	North [ft]	East [ft]	Grid East [US ft]	Grid North [US ft]	Latitude	Longitude	DLS [°/100ft]	Comments
11523.00†	90.000	358.861	6286.00	4970.26	4761.53	1649.10	3316509.94	1361085.69	40.3190200	-104.3648862	0.00	
11623.00†	90.000	358.861	6286.00	5068.50	4861.51	1647.11	3316506.68	1361185.64	40.3192944	-104.3648933	0.00	
11723.00†	90.000	358.861	6286.00	5166.74	4961.49	1645.13	3316503.42	1361285.58	40.3195688	-104.3649004	0.00	
11823.00†	90.000	358.861	6286.00	5264.98	5061.47	1643.14	3316500.16	1361385.52	40.3198433	-104.3649075	0.00	
11858.24	90.000	358.861	6286.00 ²	5299.60	5096.70	1642.44	3316499.01	1361420.74	40.3199400	-104.3649100	0.00	TP1
11923.00†	90.000	0.156	6286.00	5363.35	5161.46	1641.88	3316497.63	1361485.48	40.3201177	-104.3649120	2.00	
11934.05	90.000	0.377	6286.00	5374.25	5172.51	1641.93	3316497.54	1361496.53	40.3201481	-104.3649118	2.00	3D Arc (J)
12023.00†	90.000	0.377	6286.00	5462.05	5261.46	1642.52	3316496.99	1361585.47	40.3203922	-104.3649097	0.00	
12123.00†	90.000	0.377	6286.00	5560.75	5361.46	1643.18	3316496.38	1361685.47	40.3206667	-104.3649073	0.00	
12223.00†	90.000	0.377	6286.00	5659.45	5461.45	1643.83	3316495.76	1361785.46	40.3209412	-104.3649049	0.00	
12323.00†	90.000	0.377	6286.00	5758.14	5561.45	1644.49	3316495.15	1361885.46	40.3212157	-104.3649025	0.00	
12423.00†	90.000	0.377	6286.00	5856.84	5661.45	1645.15	3316494.53	1361985.45	40.3214902	-104.3649001	0.00	
12523.00†	90.000	0.377	6286.00	5955.54	5761.45	1645.81	3316493.92	1362085.44	40.3217647	-104.3648978	0.00	
12623.00†	90.000	0.377	6286.00	6054.24	5861.44	1646.47	3316493.30	1362185.44	40.3220392	-104.3648954	0.00	
12723.00†	90.000	0.377	6286.00	6152.94	5961.44	1647.12	3316492.69	1362285.43	40.3223136	-104.3648930	0.00	
12823.00†	90.000	0.377	6286.00	6251.64	6061.44	1647.78	3316492.07	1362385.42	40.3225881	-104.3648906	0.00	
12923.00†	90.000	0.377	6286.00	6350.34	6161.44	1648.44	3316491.45	1362485.42	40.3228626	-104.3648882	0.00	
13023.00†	90.000	0.377	6286.00	6449.04	6261.44	1649.10	3316490.84	1362585.41	40.3231371	-104.3648858	0.00	
13123.00†	90.000	0.377	6286.00	6547.74	6361.43	1649.76	3316490.22	1362685.40	40.3234116	-104.3648835	0.00	
13223.00†	90.000	0.377	6286.00	6646.44	6461.43	1650.41	3316489.61	1362785.40	40.3236861	-104.3648811	0.00	
13323.00†	90.000	0.377	6286.00	6745.14	6561.43	1651.07	3316488.99	1362885.39	40.3239606	-104.3648787	0.00	
13423.00†	90.000	0.377	6286.00	6843.84	6661.43	1651.73	3316488.38	1362985.39	40.3242351	-104.3648763	0.00	
13523.00†	90.000	0.377	6286.00	6942.54	6761.42	1652.39	3316487.76	1363085.38	40.3245095	-104.3648739	0.00	
13623.00†	90.000	0.377	6286.00	7041.24	6861.42	1653.05	3316487.15	1363185.37	40.3247840	-104.3648715	0.00	
13723.00†	90.000	0.377	6286.00	7139.94	6961.42	1653.70	3316486.53	1363285.37	40.3250585	-104.3648691	0.00	
13823.00†	90.000	0.377	6286.00	7238.64	7061.42	1654.36	3316485.92	1363385.36	40.3253330	-104.3648668	0.00	
13923.00†	90.000	0.377	6286.00	7337.34	7161.42	1655.02	3316485.30	1363485.35	40.3256075	-104.3648644	0.00	
14023.00†	90.000	0.377	6286.00	7436.04	7261.41	1655.68	3316484.69	1363585.35	40.3258820	-104.3648620	0.00	
14123.00†	90.000	0.377	6286.00	7534.74	7361.41	1656.34	3316484.07	1363685.34	40.3261565	-104.3648596	0.00	
14223.00†	90.000	0.377	6286.00	7633.44	7461.41	1656.99	3316483.45	1363785.33	40.3264310	-104.3648572	0.00	

Planned Wellpath Report

Middlepark 18-6-2L PWP Rev-A.0

Page 7 of 10

REFERENCE WELLPATH IDENTIFICATION

Operator	CONFLUENCE RESOURCES	Well	Middlepark 18-6-2L
Field	WELD COUNTY (NAD83, TRUE NORTH)	API	0512347457
Facility	SEC.18-T04N-R62W	Wellbore	Middlepark 18-6-2L PWB
Slot	SLOT#05 Middlepark 18-6-2L (281'FSL & 1603'FWL,SEC.18)		

WELLPATH DATA (175 stations) † = interpolated, ‡ = extrapolated station

MD [ft]	Inclination [°]	Azimuth [°]	TVD [ft]	Vert Sect [ft]	North [ft]	East [ft]	Grid East [US ft]	Grid North [US ft]	Latitude	Longitude	DLS [°/100ft]	Comments
14323.00†	90.000	0.377	6286.00	7732.14	7561.41	1657.65	3316482.84	1363885.33	40.3267054	-104.3648548	0.00	
14423.00†	90.000	0.377	6286.00	7830.84	7661.41	1658.31	3316482.22	1363985.32	40.3269799	-104.3648525	0.00	
14523.00†	90.000	0.377	6286.00	7929.54	7761.40	1658.97	3316481.61	1364085.32	40.3272544	-104.3648501	0.00	
14623.00†	90.000	0.377	6286.00	8028.24	7861.40	1659.63	3316480.99	1364185.31	40.3275289	-104.3648477	0.00	
14723.00†	90.000	0.377	6286.00	8126.94	7961.40	1660.28	3316480.38	1364285.30	40.3278034	-104.3648453	0.00	
14823.00†	90.000	0.377	6286.00	8225.64	8061.40	1660.94	3316479.76	1364385.30	40.3280779	-104.3648429	0.00	
14923.00†	90.000	0.377	6286.00	8324.34	8161.39	1661.60	3316479.15	1364485.29	40.3283524	-104.3648405	0.00	
15023.00†	90.000	0.377	6286.00	8423.03	8261.39	1662.26	3316478.53	1364585.28	40.3286269	-104.3648382	0.00	
15123.00†	90.000	0.377	6286.00	8521.73	8361.39	1662.91	3316477.92	1364685.28	40.3289013	-104.3648358	0.00	
15223.00†	90.000	0.377	6286.00	8620.43	8461.39	1663.57	3316477.30	1364785.27	40.3291758	-104.3648334	0.00	
15323.00†	90.000	0.377	6286.00	8719.13	8561.39	1664.23	3316476.69	1364885.26	40.3294503	-104.3648310	0.00	
15423.00†	90.000	0.377	6286.00	8817.83	8661.38	1664.89	3316476.07	1364985.26	40.3297248	-104.3648286	0.00	
15523.00†	90.000	0.377	6286.00	8916.53	8761.38	1665.55	3316475.45	1365085.25	40.3299993	-104.3648262	0.00	
15623.00†	90.000	0.377	6286.00	9015.23	8861.38	1666.20	3316474.84	1365185.25	40.3302738	-104.3648239	0.00	
15723.00†	90.000	0.377	6286.00	9113.93	8961.38	1666.86	3316474.22	1365285.24	40.3305483	-104.3648215	0.00	
15823.00†	90.000	0.377	6286.00	9212.63	9061.38	1667.52	3316473.61	1365385.23	40.3308228	-104.3648191	0.00	
15923.00†	90.000	0.377	6286.00	9311.33	9161.37	1668.18	3316472.99	1365485.23	40.3310972	-104.3648167	0.00	
16023.00†	90.000	0.377	6286.00	9410.03	9261.37	1668.84	3316472.38	1365585.22	40.3313717	-104.3648143	0.00	
16123.00†	90.000	0.377	6286.00	9508.73	9361.37	1669.49	3316471.76	1365685.21	40.3316462	-104.3648119	0.00	
16223.00†	90.000	0.377	6286.00	9607.43	9461.37	1670.15	3316471.15	1365785.21	40.3319207	-104.3648095	0.00	
16323.00†	90.000	0.377	6286.00	9706.13	9561.36	1670.81	3316470.53	1365885.20	40.3321952	-104.3648072	0.00	
16423.00†	90.000	0.377	6286.00	9804.83	9661.36	1671.47	3316469.92	1365985.19	40.3324697	-104.3648048	0.00	
16523.00†	90.000	0.377	6286.00	9903.53	9761.36	1672.13	3316469.30	1366085.19	40.3327442	-104.3648024	0.00	
16623.00†	90.000	0.377	6286.00	10002.23	9861.36	1672.78	3316468.68	1366185.18	40.3330186	-104.3648000	0.00	
16623.49	90.000	0.377	6286.00 ³	10002.71	9861.85	1672.79	3316468.68	1366185.67	40.3330200	-104.3648000	0.00	TD

REFERENCE WELLPATH IDENTIFICATION

Operator	CONFLUENCE RESOURCES	Well	Middlepark 18-6-2L
Field	WELD COUNTY (NAD83, TRUE NORTH)	API	0512347457
Facility	SEC.18-T04N-R62W	Wellbore	Middlepark 18-6-2L PWB
Slot	SLOT#05 Middlepark 18-6-2L (281'FSL & 1603'FWL,SEC.18)		

HOLE & CASING SECTIONS

- Ref Wellbore: Middlepark 18-6-2L PWB Ref Wellpath: Middlepark 18-6-2L PWP Rev-A.0

String/Diameter	Start MD [ft]	End MD [ft]	Interval [ft]	Start TVD [ft]	End TVD [ft]	Start N/S [ft]	Start E/W [ft]	End N/S [ft]	End E/W [ft]
9.625in Casing Surface	23.00	1691.80	1668.80	23.00	1650.00	0.00	0.00	-89.40	296.12

TARGETS

Name	MD [ft]	TVD [ft]	North [ft]	East [ft]	Grid East [US ft]	Grid North [US ft]	Latitude	Longitude	Shape
SEC.07-T04N-R62W	N/A	0.00	-76.50	61.36	3314984.00	1356228.05	40.3057400	-104.3705800	polygon
	2D Polygon: dimensions not calculated								
SEC.07/18-T04N-R62W (SB 470')	N/A	0.00	-76.50	61.36	3314984.00	1356228.05	40.3057400	-104.3705800	polygon
	2D Polygon: dimensions not calculated								
SEC.18-T04N-R62W	N/A	0.00	-76.50	61.36	3314984.00	1356228.05	40.3057400	-104.3705800	polygon
	2D Polygon: dimensions not calculated								
3) Middlepark 18-6-2L BHL REV-1 (470'FNL & 1685'FEL,SEC.07)	16623.49	6286.00	9861.85	1672.79	3316468.68	1366185.67	40.3330200	-104.3648000	point
1) Middlepark 18-6-2L LP REV-1 (470'FSL & 2013'FEL,SEC.18)	6931.85	6286.00	171.29	1740.38	3316659.66	1356497.19	40.3064200	-104.3645600	point
2) Middlepark 18-6-2L TP1 REV-1 (0'FNL & 1960'FEL,SEC.18)	11858.24	6286.00	5096.70	1642.44	3316499.01	1361420.74	40.3199400	-104.3649100	point

Planned Wellpath Report

Middlepark 18-6-2L PWP Rev-A.0

Page 9 of 10

REFERENCE WELLPATH IDENTIFICATION

Operator	CONFLUENCE RESOURCES	Well	Middlepark 18-6-2L
Field	WELD COUNTY (NAD83, TRUE NORTH)	API	0512347457
Facility	SEC.18-T04N-R62W	Wellbore	Middlepark 18-6-2L PWB
Slot	SLOT#05 Middlepark 18-6-2L (281'FSL & 1603'FWL,SEC.18)		

SURVEY PROGRAM - Ref Wellbore: Middlepark 18-6-2L PWB Ref Wellpath: Middlepark 18-6-2L PWP Rev-A.0

Start MD [ft]	End MD [ft]	Positional Uncertainty Model	Log Name/Comment	Wellbore
23.00	1691.80	BH NaviTrak (2019) (Axial)		Middlepark 18-6-2L PWB
1691.80	16623.49	BH AutoTrak Curve/eXpress (2019) (Short spacing)		Middlepark 18-6-2L PWB

Planned Wellpath Report

Middlepark 18-6-2L PWP Rev-A.0

Page 10 of 10

REFERENCE WELLPATH IDENTIFICATION			
Operator	CONFLUENCE RESOURCES	Well	Middlepark 18-6-2L
Field	WELD COUNTY (NAD83, TRUE NORTH)	API	0512347457
Facility	SEC.18-T04N-R62W	Wellbore	Middlepark 18-6-2L PWB
Slot	SLOT#05 Middlepark 18-6-2L (281'FSL & 1603'FWL,SEC.18)		

DESIGN COMMENTS				
MD [ft]	Inclination [°]	Azimuth [°]	TVD [ft]	Comment
23.00	0.000	106.800	23.00	Tie On
250.00	0.000	106.800	250.00	End of Tangent
1159.43	18.189	106.800	1144.23	Build (XS)
5870.55	18.189	106.800	5619.96	KOP
6931.85	90.000	358.861	6286.00	LANDING
11858.24	90.000	358.861	6286.00	TP1
11934.05	90.000	0.377	6286.00	3D Arc (J)
16623.49	90.000	0.377	6286.00	TD