

CONFLUENCE RESOURCES



Location:	COLORADO	Slot:	SLOT#03 Middlepark 18-4-1L (242FSL & 1634FWL,SEC.18)
Field:	WELD COUNTY (NAD83, TRUE NORTH)	Well:	Middlepark 18-4-1L
Facility:	SEC.18-T04N-R62W	Wellbore:	Middlepark 18-4-1L PWB
Plot reference wellpath is Middlepark 18-4-1L PWP RevA.0		Grid System: NAD83 / Lambert Colorado SP, Northern Zone (501), US feet	
True vertical depths are referenced to Rig (23) (KB)		North Reference: True north	
Reference wellpath measured depths are referenced to Rig (23) (KB)		Scale: True distance	
Rig (23) (KB) to Mean Sea Level: 4586 feet		Coordinates are in feet referenced to Slot	
Mean Sea Level to Mud line (At Slot: SLOT#03 Middlepark 18-4-1L (242FSL & 1634FWL,SEC.18): 0 feet		Depths are in feet	
Offset wellpath MDs are referenced to each path's default MD datum		Created by: painettr on 2021-12-01; Database: WellArchiectDB	

Location Information

Facility Name		Grid East (US ft)	Grid North (US ft)	Latitude	Longitude
SEC.18-T04N-R62W		3314967.040	1356246.051	40.3057800°	-104.3706400°
Slot	Local N (ft)	Local E (ft)	Grid East (US ft)	Grid North (US ft)	Latitude
SLOT#03 Middlepark 18-4-1L (242FSL & 1634FWL,SEC.18)	18.22	-13.95	3314962.864	1356264.087	40.3058400°
Rig (23) (KB) to Mud line (At Slot: SLOT#03 Middlepark 18-4-1L (242FSL & 1634FWL,SEC.18))	4586ft				
Mean Sea Level to Mud line (At Slot: SLOT#03 Middlepark 18-4-1L (242FSL & 1634FWL,SEC.18))	0ft				
Rig (23) (KB) to Mean Sea Level	4586ft				

Hole and Casing Sections

Name	Start MD (ft)	End MD (ft)	Interval (ft)	Start TVD (ft)	End TVD (ft)	Start Local N (ft)	Start Local E (ft)	End Local N (ft)	End Local E (ft)	Wellbore
9.625in Casing Surface	23.00	1709.98	1686.98	23.00	1650.00	0.00	0.00	-59.11	354.41	Middlepark 18-4-1L PWB

Survey Program

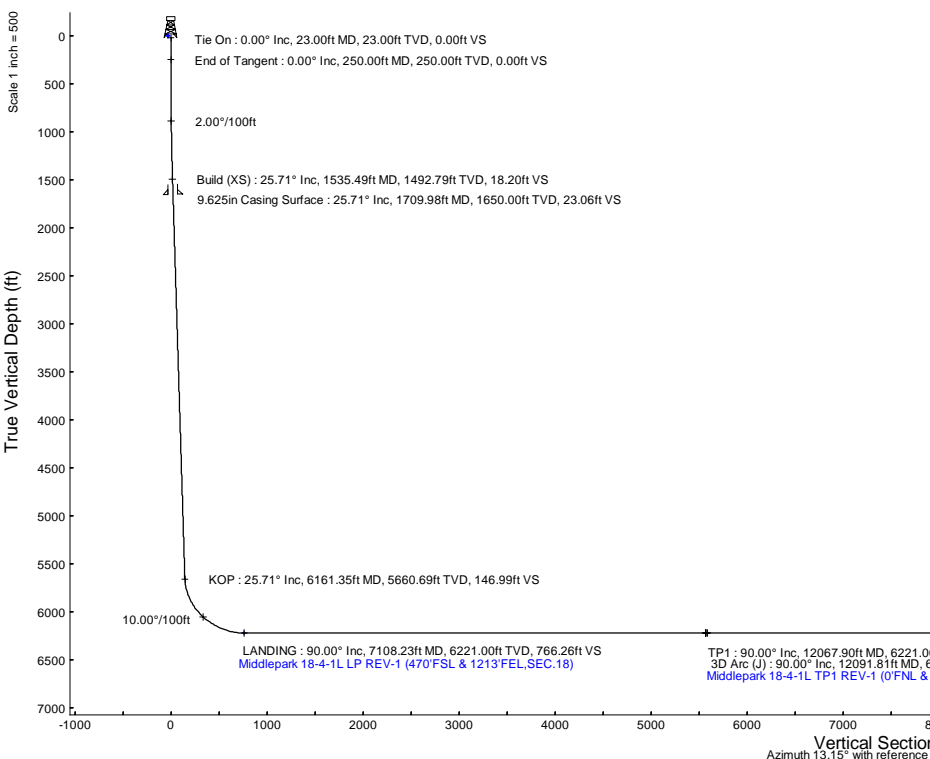
Start MD (ft)	End MD (ft)	Tool	Model	Log Name/Comment	Wellbore
23.00	1709.98	BH NavTrak (2019)	BH NavTrak (2019) (Axial)		Middlepark 18-4-1L PWB
1709.98	16815.42	BH AutoTrak Curve/xpress (2019)	BH AutoTrak Curve/xpress (2019) (Short spacing)		Middlepark 18-4-1L PWB

Bottom Hole Location

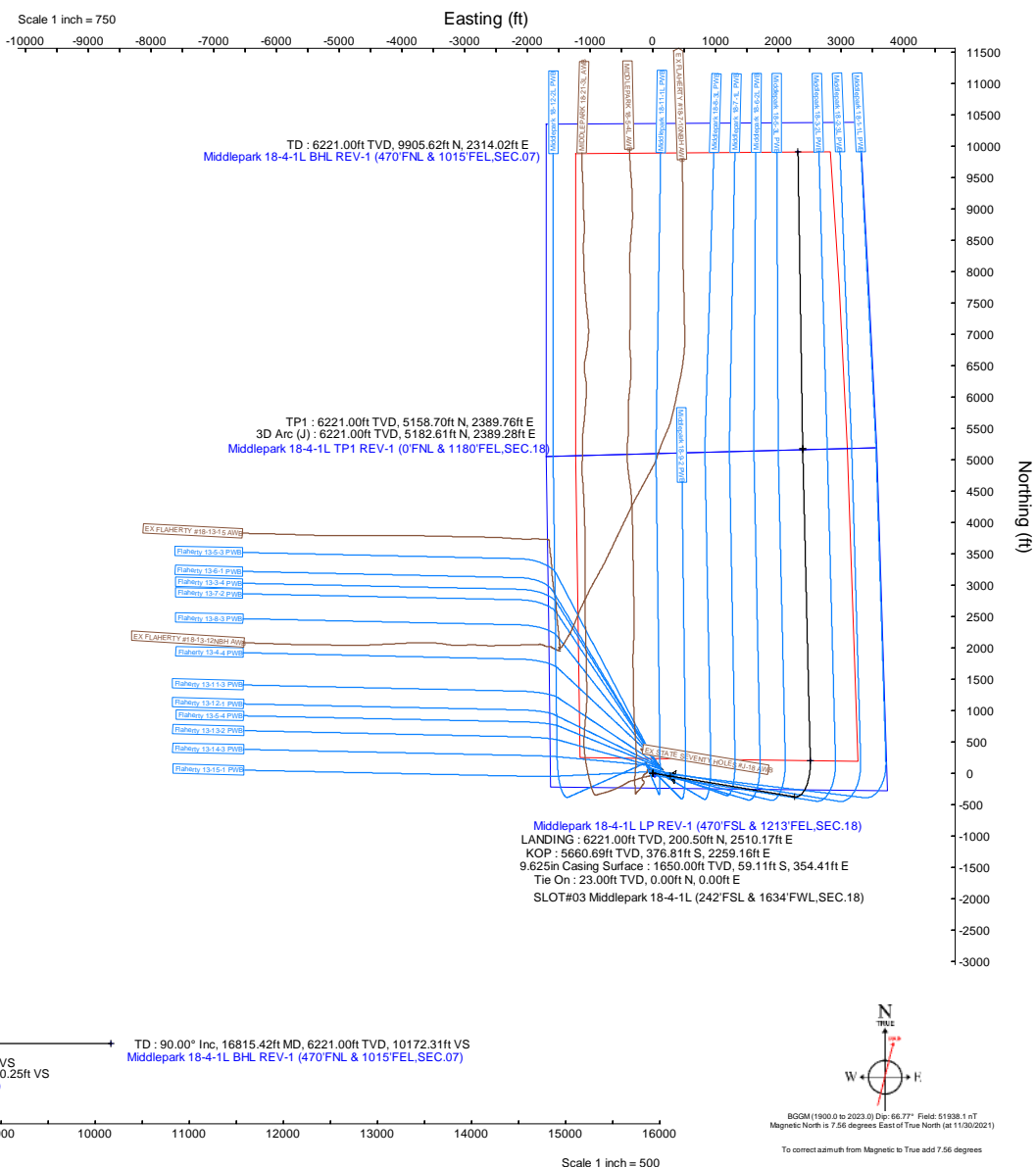
MD (ft)	Inc (°)	Az (°)	TVD (ft)	Local N (ft)	Local E (ft)	Grid East (US ft)	Grid North (US ft)	Latitude	Longitude
16815.42	90.000	359.087	6221.00	9905.62	2314.02	3317140.45	1366197.93	40.3330300°	-104.3623900°

Targets

Name	MD (ft)	TVD (ft)	Local N (ft)	Local E (ft)	Grid East (US ft)	Grid North (US ft)	Latitude	Longitude
SEC.07-T04N-R62W	N/A	0.00	-36.43	30.68	3314984.00	1356228.05	40.3057400°	-104.3705800°
SEC.07/18-T04N-R62W (SB 470)	N/A	0.00	-36.43	30.68	3314984.00	1356228.05	40.3057400°	-104.3705800°
SEC.18-T04N-R62W	N/A	0.00	-36.43	30.68	3314984.00	1356228.05	40.3057400°	-104.3705800°
Middlepark 18-4-1L BHL REV-1 (470FNL & 1015FEL,SEC.07)	16815.42	6221.00	9905.62	2314.02	3317140.45	1366197.93	40.3330300°	-104.3623900°
Middlepark 18-4-1L LP REV-1 (470FSL & 1213FEL,SEC.18)	7108.23	6221.00	200.50	2510.17	3317460.16	1356496.52	40.3063900°	-104.3616900°
Middlepark 18-4-1L TP1 REV-1 (0FNL & 1180FEL,SEC.18)	12067.90	6221.00	5158.70	2389.76	3317276.63	1361452.57	40.3200000°	-104.3621200°



Well Profile Data								
Design Comment	MD (ft)	Inc (°)	Az (°)	TVD (ft)	Local N (ft)	Local E (ft)	DLS (°/100ft)	VS (ft)
Tie On	23.00	0.000	99.469	23.00	0.00	0.00	0.00	0.00
End of Tangent	250.00	0.000	99.469	250.00	0.00	0.00	0.00	0.00
Build (XS)	1535.49	25.710	99.469	1492.79	-46.66	279.74	2.00	18.20
KOP	6161.35	25.710	99.469	5660.69	-376.81	2259.16	0.00	146.99
LANDING	7108.23	90.000	358.609	6221.00	200.50	2510.17	10.00	766.26
TP1	12067.90	90.000	358.609	6221.00	5158.70	2389.76	0.00	5567.08
3D Arc (J)	12091.81	90.000	359.087	6221.00	5182.61	2389.28	2.00	5590.25
TD	16815.42	90.000	359.087	6221.00	9905.62	2314.02	0.00	10172.31



Planned Wellpath Report

Middlepark 18-4-1L PWP Rev-A.0

Page 1 of 10

REFERENCE WELLPATH IDENTIFICATION

Operator	CONFLUENCE RESOURCES	Well	Middlepark 18-4-1L
Field	WELD COUNTY (NAD83, TRUE NORTH)	API	0512347450
Facility	SEC.18-T04N-R62W	Wellbore	Middlepark 18-4-1L PWB
Slot	SLOT#03 Middlepark 18-4-1L (242'FSL & 1634'FWL,SEC.18)		

REPORT SETUP INFORMATION

Projection System	NAD83 / Lambert Colorado SP, Northern Zone (501), US feet	Software System	WellArchitect® 6.0
North Reference	True	User	Painsetr
Scale	0.999957	Report Generated	12/1/2021 at 8:08:13 PM
Convergence at slot	0.73° East	Database	WellArchitectDB

WELLPATH LOCATION

	Local coordinates		Grid coordinates		Geographic coordinates	
	North[ft]	East[ft]	Easting[US ft]	Northing[US ft]	Latitude	Longitude
Slot Location	18.22	-13.95	3314952.86	1356264.09	40.3058400°	-104.3706900°
Facility Reference Pt			3314967.04	1356246.05	40.3057900°	-104.3706400°
Field Reference Pt			3230456.90	1245096.09	40.0032400°	-104.6773400°

WELLPATH DATUM

Calculation method	Minimum curvature	Rig (23') (KB) to Facility Vertical Datum	4586.00ft
Horizontal Reference Pt	Slot	Rig (23') (KB) to Mean Sea Level	4586.00ft
Vertical Reference Pt	Rig (23') (KB)	Rig (23') (KB) to Mud Line at Slot (SLOT#03 Middlepark 18-4-1L (242'FSL & 1634'FWL,SEC.18))	4586.00ft
MD Reference Pt	Rig (23') (KB)	Section Origin	N 0.00, E 0.00 ft
Field Vertical Reference	Mean Sea Level	Section Azimuth	13.15°

Planned Wellpath Report

Middlepark 18-4-1L PWP Rev-A.0

Page 2 of 10

REFERENCE WELLPATH IDENTIFICATION

Operator	CONFLUENCE RESOURCES	Well	Middlepark 18-4-1L
Field	WELD COUNTY (NAD83, TRUE NORTH)	API	0512347450
Facility	SEC.18-T04N-R62W	Wellbore	Middlepark 18-4-1L PWB
Slot	SLOT#03 Middlepark 18-4-1L (242'FSL & 1634'FWL,SEC.18)		

WELLPATH DATA (176 stations) † = interpolated, ‡ = extrapolated station

MD [ft]	Inclination [°]	Azimuth [°]	TVD [ft]	Vert Sect [ft]	North [ft]	East [ft]	Grid East [US ft]	Grid North [US ft]	Latitude	Longitude	DLS [°/100ft]	Comments
0.00†	0.000	99.469	0.00	0.00	0.00	0.00	3314952.86	1356264.09	40.3058400	-104.3706900	0.00	
23.00	0.000	99.469	23.00	0.00	0.00	0.00	3314952.86	1356264.09	40.3058400	-104.3706900	0.00	Tie On
123.00†	0.000	99.469	123.00	0.00	0.00	0.00	3314952.86	1356264.09	40.3058400	-104.3706900	0.00	
223.00†	0.000	99.469	223.00	0.00	0.00	0.00	3314952.86	1356264.09	40.3058400	-104.3706900	0.00	
250.00	0.000	99.469	250.00	0.00	0.00	0.00	3314952.86	1356264.09	40.3058400	-104.3706900	0.00	End of Tangent
323.00†	1.460	99.469	322.99	0.06	-0.15	0.92	3314953.78	1356263.95	40.3058396	-104.3706867	2.00	
423.00†	3.460	99.469	422.89	0.34	-0.86	5.15	3314958.03	1356263.29	40.3058376	-104.3706715	2.00	
523.00†	5.460	99.469	522.59	0.83	-2.14	12.82	3314965.71	1356262.11	40.3058341	-104.3706440	2.00	
623.00†	7.460	99.469	621.95	1.56	-3.99	23.92	3314976.83	1356260.40	40.3058290	-104.3706042	2.00	
723.00†	9.460	99.469	720.85	2.50	-6.41	38.43	3314991.37	1356258.17	40.3058224	-104.3705522	2.00	
823.00†	11.460	99.469	819.19	3.67	-9.40	56.34	3315009.31	1356255.41	40.3058142	-104.3704880	2.00	
923.00†	13.460	99.469	916.83	5.05	-12.95	77.62	3315030.64	1356252.13	40.3058045	-104.3704117	2.00	
1023.00†	15.460	99.469	1013.65	6.65	-17.05	102.24	3315055.31	1356248.34	40.3057932	-104.3703234	2.00	
1123.00†	17.460	99.469	1109.55	8.47	-21.71	130.19	3315083.32	1356244.03	40.3057804	-104.3702232	2.00	
1223.00†	19.460	99.469	1204.40	10.50	-26.92	161.42	3315114.61	1356239.22	40.3057661	-104.3701112	2.00	
1323.00†	21.460	99.469	1298.09	12.75	-32.67	195.90	3315149.16	1356233.91	40.3057503	-104.3699876	2.00	
1423.00†	23.460	99.469	1390.50	15.20	-38.96	233.58	3315186.91	1356228.11	40.3057331	-104.3698525	2.00	
1523.00†	25.460	99.469	1481.52	17.85	-45.77	274.42	3315227.83	1356221.82	40.3057144	-104.3697061	2.00	
1535.49	25.710	99.469	1492.79	18.20	-46.66	279.74	3315233.17	1356221.00	40.3057119	-104.3696870	2.00	Build (XS)
1623.00†	25.710	99.469	1571.63	20.64	-52.90	317.19	3315270.69	1356215.23	40.3056948	-104.3695528	0.00	
1723.00†	25.710	99.469	1661.73	23.42	-60.04	359.98	3315313.56	1356208.64	40.3056752	-104.3693993	0.00	
1823.00†	25.710	99.469	1751.83	26.21	-67.18	402.77	3315356.44	1356202.05	40.3056556	-104.3692459	0.00	
1923.00†	25.710	99.469	1841.93	28.99	-74.32	445.56	3315399.31	1356195.45	40.3056360	-104.3690925	0.00	
2023.00†	25.710	99.469	1932.03	31.77	-81.45	488.35	3315442.19	1356188.86	40.3056164	-104.3689391	0.00	
2123.00†	25.710	99.469	2022.13	34.56	-88.59	531.14	3315485.06	1356182.27	40.3055968	-104.3687857	0.00	
2223.00†	25.710	99.469	2112.23	37.34	-95.73	573.93	3315527.94	1356175.68	40.3055772	-104.3686322	0.00	
2323.00†	25.710	99.469	2202.33	40.13	-102.86	616.72	3315570.82	1356169.09	40.3055576	-104.3684788	0.00	
2423.00†	25.710	99.469	2292.43	42.91	-110.00	659.51	3315613.69	1356162.50	40.3055380	-104.3683254	0.00	
2523.00†	25.710	99.469	2382.53	45.69	-117.14	702.30	3315656.57	1356155.91	40.3055184	-104.3681720	0.00	
2623.00†	25.710	99.469	2472.63	48.48	-124.27	745.09	3315699.44	1356149.32	40.3054988	-104.3680186	0.00	

REFERENCE WELLPATH IDENTIFICATION

Operator	CONFLUENCE RESOURCES	Well	Middlepark 18-4-1L
Field	WELD COUNTY (NAD83, TRUE NORTH)	API	0512347450
Facility	SEC.18-T04N-R62W	Wellbore	Middlepark 18-4-1L PWB
Slot	SLOT#03 Middlepark 18-4-1L (242'FSL & 1634'FWL,SEC.18)		

WELLPATH DATA (176 stations) † = interpolated, ‡ = extrapolated station

MD [ft]	Inclination [°]	Azimuth [°]	TVD [ft]	Vert Sect [ft]	North [ft]	East [ft]	Grid East [US ft]	Grid North [US ft]	Latitude	Longitude	DLS [°/100ft]	Comments
2723.00†	25.710	99.469	2562.73	51.26	-131.41	787.88	3315742.32	1356142.72	40.3054792	-104.3678652	0.00	
2823.00†	25.710	99.469	2652.83	54.05	-138.55	830.67	3315785.20	1356136.13	40.3054597	-104.3677117	0.00	
2923.00†	25.710	99.469	2742.93	56.83	-145.69	873.46	3315828.07	1356129.54	40.3054401	-104.3675583	0.00	
3023.00†	25.710	99.469	2833.03	59.62	-152.82	916.25	3315870.95	1356122.95	40.3054205	-104.3674049	0.00	
3123.00†	25.710	99.469	2923.13	62.40	-159.96	959.04	3315913.82	1356116.36	40.3054009	-104.3672515	0.00	
3223.00†	25.710	99.469	3013.23	65.18	-167.10	1001.83	3315956.70	1356109.77	40.3053813	-104.3670981	0.00	
3323.00†	25.710	99.469	3103.33	67.97	-174.23	1044.62	3315999.57	1356103.18	40.3053617	-104.3669446	0.00	
3423.00†	25.710	99.469	3193.43	70.75	-181.37	1087.41	3316042.45	1356096.59	40.3053421	-104.3667912	0.00	
3523.00†	25.710	99.469	3283.53	73.54	-188.51	1130.20	3316085.33	1356089.99	40.3053225	-104.3666378	0.00	
3623.00†	25.710	99.469	3373.63	76.32	-195.65	1172.99	3316128.20	1356083.40	40.3053029	-104.3664844	0.00	
3723.00†	25.710	99.469	3463.73	79.10	-202.78	1215.78	3316171.08	1356076.81	40.3052833	-104.3663310	0.00	
3823.00†	25.710	99.469	3553.83	81.89	-209.92	1258.58	3316213.95	1356070.22	40.3052637	-104.3661776	0.00	
3923.00†	25.710	99.469	3643.93	84.67	-217.06	1301.37	3316256.83	1356063.63	40.3052441	-104.3660241	0.00	
4023.00†	25.710	99.469	3734.04	87.46	-224.19	1344.16	3316299.71	1356057.04	40.3052245	-104.3658707	0.00	
4123.00†	25.710	99.469	3824.14	90.24	-231.33	1386.95	3316342.58	1356050.45	40.3052049	-104.3657173	0.00	
4223.00†	25.710	99.469	3914.24	93.02	-238.47	1429.74	3316385.46	1356043.86	40.3051853	-104.3655639	0.00	
4323.00†	25.710	99.469	4004.34	95.81	-245.60	1472.53	3316428.33	1356037.26	40.3051657	-104.3654105	0.00	
4423.00†	25.710	99.469	4094.44	98.59	-252.74	1515.32	3316471.21	1356030.67	40.3051461	-104.3652571	0.00	
4523.00†	25.710	99.469	4184.54	101.38	-259.88	1558.11	3316514.09	1356024.08	40.3051265	-104.3651036	0.00	
4623.00†	25.710	99.469	4274.64	104.16	-267.02	1600.90	3316556.96	1356017.49	40.3051069	-104.3649502	0.00	
4723.00†	25.710	99.469	4364.74	106.95	-274.15	1643.69	3316599.84	1356010.90	40.3050873	-104.3647968	0.00	
4823.00†	25.710	99.469	4454.84	109.73	-281.29	1686.48	3316642.71	1356004.31	40.3050677	-104.3646434	0.00	
4923.00†	25.710	99.469	4544.94	112.51	-288.43	1729.27	3316685.59	1355997.72	40.3050481	-104.3644900	0.00	
5023.00†	25.710	99.469	4635.04	115.30	-295.56	1772.06	3316728.46	1355991.13	40.3050285	-104.3643366	0.00	
5123.00†	25.710	99.469	4725.14	118.08	-302.70	1814.85	3316771.34	1355984.53	40.3050089	-104.3641831	0.00	
5223.00†	25.710	99.469	4815.24	120.87	-309.84	1857.64	3316814.22	1355977.94	40.3049893	-104.3640297	0.00	
5323.00†	25.710	99.469	4905.34	123.65	-316.98	1900.43	3316857.09	1355971.35	40.3049697	-104.3638763	0.00	
5423.00†	25.710	99.469	4995.44	126.43	-324.11	1943.22	3316899.97	1355964.76	40.3049501	-104.3637229	0.00	
5523.00†	25.710	99.469	5085.54	129.22	-331.25	1986.01	3316942.84	1355958.17	40.3049305	-104.3635695	0.00	
5623.00†	25.710	99.469	5175.64	132.00	-338.39	2028.80	3316985.72	1355951.58	40.3049109	-104.3634161	0.00	

REFERENCE WELLPATH IDENTIFICATION

Operator	CONFLUENCE RESOURCES	Well	Middlepark 18-4-1L
Field	WELD COUNTY (NAD83, TRUE NORTH)	API	0512347450
Facility	SEC.18-T04N-R62W	Wellbore	Middlepark 18-4-1L PWB
Slot	SLOT#03 Middlepark 18-4-1L (242'FSL & 1634'FWL,SEC.18)		

WELLPATH DATA (176 stations) † = interpolated, ‡ = extrapolated station

MD [ft]	Inclination [°]	Azimuth [°]	TVD [ft]	Vert Sect [ft]	North [ft]	East [ft]	Grid East [US ft]	Grid North [US ft]	Latitude	Longitude	DLS [°/100ft]	Comments
5723.00†	25.710	99.469	5265.74	134.79	-345.52	2071.59	3317028.60	1355944.99	40.3048913	-104.3632626	0.00	
5823.00†	25.710	99.469	5355.84	137.57	-352.66	2114.38	3317071.47	1355938.40	40.3048717	-104.3631092	0.00	
5923.00†	25.710	99.469	5445.94	140.35	-359.80	2157.17	3317114.35	1355931.80	40.3048521	-104.3629558	0.00	
6023.00†	25.710	99.469	5536.04	143.14	-366.93	2199.96	3317157.22	1355925.21	40.3048325	-104.3628024	0.00	
6123.00†	25.710	99.469	5626.14	145.92	-374.07	2242.75	3317200.10	1355918.62	40.3048129	-104.3626490	0.00	
6161.35	25.710	99.469	5660.69	146.99	-376.81	2259.16	3317216.54	1355916.09	40.3048054	-104.3625901	0.00	KOP
6223.00†	25.348	85.158	5716.38	151.93	-377.90	2285.53	3317242.92	1355915.34	40.3048024	-104.3624956	10.00	
6323.00†	27.631	63.204	5806.09	173.48	-365.60	2327.66	3317284.89	1355928.17	40.3048361	-104.3623445	10.00	
6423.00†	32.727	45.983	5892.67	211.18	-336.29	2367.90	3317324.75	1355957.99	40.3049166	-104.3622003	10.00	
6523.00†	39.556	33.532	5973.49	263.88	-290.85	2405.03	3317361.29	1356003.90	40.3050413	-104.3620671	10.00	
6623.00†	47.365	24.416	6046.09	329.97	-230.66	2437.90	3317393.40	1356064.50	40.3052065	-104.3619492	10.00	
6723.00†	55.732	17.403	6108.27	407.45	-157.55	2465.54	3317420.10	1356137.95	40.3054072	-104.3618501	10.00	
6823.00†	64.425	11.688	6158.13	493.96	-73.74	2487.09	3317440.58	1356222.02	40.3056372	-104.3617728	10.00	
6923.00†	73.309	6.760	6194.17	586.88	18.22	2501.90	3317454.22	1356314.16	40.3058897	-104.3617197	10.00	
7023.00†	82.300	2.275	6215.28	683.38	115.53	2509.52	3317460.60	1356411.56	40.3061568	-104.3616923	10.00	
7108.23	90.000	358.609	6221.00†	766.26	200.50	2510.17	3317460.16	1356496.52	40.3063900	-104.3616900	10.00	LANDING
7123.00†	90.000	358.609	6221.00	780.55	215.26	2509.81	3317459.62	1356511.28	40.3064305	-104.3616913	0.00	
7223.00†	90.000	358.609	6221.00	877.35	315.23	2507.38	3317455.91	1356611.20	40.3067049	-104.3616999	0.00	
7323.00†	90.000	358.609	6221.00	974.14	415.20	2504.95	3317452.21	1356711.13	40.3069793	-104.3617086	0.00	
7423.00†	90.000	358.609	6221.00	1070.94	515.17	2502.52	3317448.51	1356811.06	40.3072538	-104.3617173	0.00	
7523.00†	90.000	358.609	6221.00	1167.74	615.14	2500.10	3317444.81	1356910.99	40.3075282	-104.3617260	0.00	
7623.00†	90.000	358.609	6221.00	1264.54	715.11	2497.67	3317441.11	1357010.91	40.3078026	-104.3617346	0.00	
7723.00†	90.000	358.609	6221.00	1361.33	815.08	2495.24	3317437.41	1357110.84	40.3080770	-104.3617433	0.00	
7823.00†	90.000	358.609	6221.00	1458.13	915.05	2492.81	3317433.71	1357210.77	40.3083514	-104.3617520	0.00	
7923.00†	90.000	358.609	6221.00	1554.93	1015.02	2490.39	3317430.01	1357310.69	40.3086258	-104.3617606	0.00	
8023.00†	90.000	358.609	6221.00	1651.73	1114.99	2487.96	3317426.31	1357410.62	40.3089002	-104.3617693	0.00	
8123.00†	90.000	358.609	6221.00	1748.52	1214.96	2485.53	3317422.61	1357510.55	40.3091747	-104.3617780	0.00	
8223.00†	90.000	358.609	6221.00	1845.32	1314.93	2483.10	3317418.91	1357610.47	40.3094491	-104.3617866	0.00	
8323.00†	90.000	358.609	6221.00	1942.12	1414.90	2480.67	3317415.21	1357710.40	40.3097235	-104.3617953	0.00	
8423.00†	90.000	358.609	6221.00	2038.91	1514.87	2478.25	3317411.51	1357810.33	40.3099979	-104.3618040	0.00	

REFERENCE WELLPATH IDENTIFICATION

Operator	CONFLUENCE RESOURCES	Well	Middlepark 18-4-1L
Field	WELD COUNTY (NAD83, TRUE NORTH)	API	0512347450
Facility	SEC.18-T04N-R62W	Wellbore	Middlepark 18-4-1L PWB
Slot	SLOT#03 Middlepark 18-4-1L (242'FSL & 1634'FWL,SEC.18)		

WELLPATH DATA (176 stations) † = interpolated, ‡ = extrapolated station

MD [ft]	Inclination [°]	Azimuth [°]	TVD [ft]	Vert Sect [ft]	North [ft]	East [ft]	Grid East [US ft]	Grid North [US ft]	Latitude	Longitude	DLS [°/100ft]	Comments
8523.00†	90.000	358.609	6221.00	2135.71	1614.84	2475.82	3317407.81	1357910.26	40.3102723	-104.3618126	0.00	
8623.00†	90.000	358.609	6221.00	2232.51	1714.81	2473.39	3317404.11	1358010.18	40.3105467	-104.3618213	0.00	
8723.00†	90.000	358.609	6221.00	2329.31	1814.79	2470.96	3317400.41	1358110.11	40.3108211	-104.3618300	0.00	
8823.00†	90.000	358.609	6221.00	2426.10	1914.76	2468.54	3317396.71	1358210.04	40.3110956	-104.3618386	0.00	
8923.00†	90.000	358.609	6221.00	2522.90	2014.73	2466.11	3317393.01	1358309.96	40.3113700	-104.3618473	0.00	
9023.00†	90.000	358.609	6221.00	2619.70	2114.70	2463.68	3317389.31	1358409.89	40.3116444	-104.3618560	0.00	
9123.00†	90.000	358.609	6221.00	2716.50	2214.67	2461.25	3317385.60	1358509.82	40.3119188	-104.3618647	0.00	
9223.00†	90.000	358.609	6221.00	2813.29	2314.64	2458.82	3317381.90	1358609.75	40.3121932	-104.3618733	0.00	
9323.00†	90.000	358.609	6221.00	2910.09	2414.61	2456.40	3317378.20	1358709.67	40.3124676	-104.3618820	0.00	
9423.00†	90.000	358.609	6221.00	3006.89	2514.58	2453.97	3317374.50	1358809.60	40.3127420	-104.3618907	0.00	
9523.00†	90.000	358.609	6221.00	3103.68	2614.55	2451.54	3317370.80	1358909.53	40.3130165	-104.3618993	0.00	
9623.00†	90.000	358.609	6221.00	3200.48	2714.52	2449.11	3317367.10	1359009.45	40.3132909	-104.3619080	0.00	
9723.00†	90.000	358.609	6221.00	3297.28	2814.49	2446.69	3317363.40	1359109.38	40.3135653	-104.3619167	0.00	
9823.00†	90.000	358.609	6221.00	3394.08	2914.46	2444.26	3317359.70	1359209.31	40.3138397	-104.3619253	0.00	
9923.00†	90.000	358.609	6221.00	3490.87	3014.43	2441.83	3317356.00	1359309.23	40.3141141	-104.3619340	0.00	
10023.00†	90.000	358.609	6221.00	3587.67	3114.40	2439.40	3317352.30	1359409.16	40.3143885	-104.3619427	0.00	
10123.00†	90.000	358.609	6221.00	3684.47	3214.37	2436.97	3317348.60	1359509.09	40.3146629	-104.3619514	0.00	
10223.00†	90.000	358.609	6221.00	3781.26	3314.34	2434.55	3317344.90	1359609.02	40.3149373	-104.3619600	0.00	
10323.00†	90.000	358.609	6221.00	3878.06	3414.31	2432.12	3317341.20	1359708.94	40.3152118	-104.3619687	0.00	
10423.00†	90.000	358.609	6221.00	3974.86	3514.28	2429.69	3317337.50	1359808.87	40.3154862	-104.3619774	0.00	
10523.00†	90.000	358.609	6221.00	4071.66	3614.25	2427.26	3317333.80	1359908.80	40.3157606	-104.3619860	0.00	
10623.00†	90.000	358.609	6221.00	4168.45	3714.23	2424.84	3317330.10	1360008.72	40.3160350	-104.3619947	0.00	
10723.00†	90.000	358.609	6221.00	4265.25	3814.20	2422.41	3317326.40	1360108.65	40.3163094	-104.3620034	0.00	
10823.00†	90.000	358.609	6221.00	4362.05	3914.17	2419.98	3317322.70	1360208.58	40.3165838	-104.3620121	0.00	
10923.00†	90.000	358.609	6221.00	4458.85	4014.14	2417.55	3317318.99	1360308.50	40.3168582	-104.3620207	0.00	
11023.00†	90.000	358.609	6221.00	4555.64	4114.11	2415.12	3317315.29	1360408.43	40.3171327	-104.3620294	0.00	
11123.00†	90.000	358.609	6221.00	4652.44	4214.08	2412.70	3317311.59	1360508.36	40.3174071	-104.3620381	0.00	
11223.00†	90.000	358.609	6221.00	4749.24	4314.05	2410.27	3317307.89	1360608.29	40.3176815	-104.3620467	0.00	
11323.00†	90.000	358.609	6221.00	4846.03	4414.02	2407.84	3317304.19	1360708.21	40.3179559	-104.3620554	0.00	
11423.00†	90.000	358.609	6221.00	4942.83	4513.99	2405.41	3317300.49	1360808.14	40.3182303	-104.3620641	0.00	

Planned Wellpath Report

Middlepark 18-4-1L PWP Rev-A.0

Page 6 of 10

REFERENCE WELLPATH IDENTIFICATION

Operator	CONFLUENCE RESOURCES	Well	Middlepark 18-4-1L
Field	WELD COUNTY (NAD83, TRUE NORTH)	API	0512347450
Facility	SEC.18-T04N-R62W	Wellbore	Middlepark 18-4-1L PWB
Slot	SLOT#03 Middlepark 18-4-1L (242'FSL & 1634'FWL,SEC.18)		

WELLPATH DATA (176 stations) † = interpolated, ‡ = extrapolated station

MD [ft]	Inclination [°]	Azimuth [°]	TVD [ft]	Vert Sect [ft]	North [ft]	East [ft]	Grid East [US ft]	Grid North [US ft]	Latitude	Longitude	DLS [°/100ft]	Comments
11523.00†	90.000	358.609	6221.00	5039.63	4613.96	2402.99	3317296.79	1360908.07	40.3185047	-104.3620727	0.00	
11623.00†	90.000	358.609	6221.00	5136.43	4713.93	2400.56	3317293.09	1361007.99	40.3187791	-104.3620814	0.00	
11723.00†	90.000	358.609	6221.00	5233.22	4813.90	2398.13	3317289.39	1361107.92	40.3190536	-104.3620901	0.00	
11823.00†	90.000	358.609	6221.00	5330.02	4913.87	2395.70	3317285.69	1361207.85	40.3193280	-104.3620988	0.00	
11923.00†	90.000	358.609	6221.00	5426.82	5013.84	2393.27	3317281.99	1361307.78	40.3196024	-104.3621074	0.00	
12023.00†	90.000	358.609	6221.00	5523.62	5113.81	2390.85	3317278.29	1361407.70	40.3198768	-104.3621161	0.00	
12067.90	90.000	358.609	6221.00‡	5567.08	5158.70	2389.76	3317276.63	1361452.57	40.3200000	-104.3621200	0.00	TP1
12091.81	90.000	359.087	6221.00	5590.25	5182.61	2389.28	3317275.84	1361476.47	40.3200656	-104.3621217	2.00	3D Arc (J)
12123.00†	90.000	359.087	6221.00	5620.50	5213.79	2388.78	3317274.95	1361507.64	40.3201512	-104.3621235	0.00	
12223.00†	90.000	359.087	6221.00	5717.51	5313.78	2387.19	3317272.08	1361607.60	40.3204257	-104.3621292	0.00	
12323.00†	90.000	359.087	6221.00	5814.51	5413.77	2385.59	3317269.22	1361707.55	40.3207001	-104.3621348	0.00	
12423.00†	90.000	359.087	6221.00	5911.51	5513.75	2384.00	3317266.35	1361807.50	40.3209746	-104.3621405	0.00	
12523.00†	90.000	359.087	6221.00	6008.52	5613.74	2382.41	3317263.48	1361907.46	40.3212491	-104.3621462	0.00	
12623.00†	90.000	359.087	6221.00	6105.52	5713.73	2380.81	3317260.62	1362007.41	40.3215235	-104.3621519	0.00	
12723.00†	90.000	359.087	6221.00	6202.52	5813.71	2379.22	3317257.75	1362107.37	40.3217980	-104.3621576	0.00	
12823.00†	90.000	359.087	6221.00	6299.53	5913.70	2377.63	3317254.88	1362207.32	40.3220724	-104.3621632	0.00	
12923.00†	90.000	359.087	6221.00	6396.53	6013.69	2376.03	3317252.02	1362307.28	40.3223469	-104.3621689	0.00	
13023.00†	90.000	359.087	6221.00	6493.53	6113.68	2374.44	3317249.15	1362407.23	40.3226214	-104.3621746	0.00	
13123.00†	90.000	359.087	6221.00	6590.54	6213.66	2372.85	3317246.29	1362507.19	40.3228958	-104.3621803	0.00	
13223.00†	90.000	359.087	6221.00	6687.54	6313.65	2371.26	3317243.42	1362607.14	40.3231703	-104.3621860	0.00	
13323.00†	90.000	359.087	6221.00	6784.54	6413.64	2369.66	3317240.55	1362707.09	40.3234447	-104.3621916	0.00	
13423.00†	90.000	359.087	6221.00	6881.55	6513.63	2368.07	3317237.69	1362807.05	40.3237192	-104.3621973	0.00	
13523.00†	90.000	359.087	6221.00	6978.55	6613.61	2366.48	3317234.82	1362907.00	40.3239937	-104.3622030	0.00	
13623.00†	90.000	359.087	6221.00	7075.55	6713.60	2364.88	3317231.95	1363006.96	40.3242681	-104.3622087	0.00	
13723.00†	90.000	359.087	6221.00	7172.56	6813.59	2363.29	3317229.09	1363106.91	40.3245426	-104.3622143	0.00	
13823.00†	90.000	359.087	6221.00	7269.56	6913.57	2361.70	3317226.22	1363206.87	40.3248170	-104.3622200	0.00	
13923.00†	90.000	359.087	6221.00	7366.56	7013.56	2360.10	3317223.36	1363306.82	40.3250915	-104.3622257	0.00	
14023.00†	90.000	359.087	6221.00	7463.57	7113.55	2358.51	3317220.49	1363406.78	40.3253659	-104.3622314	0.00	
14123.00†	90.000	359.087	6221.00	7560.57	7213.54	2356.92	3317217.62	1363506.73	40.3256404	-104.3622371	0.00	
14223.00†	90.000	359.087	6221.00	7657.57	7313.52	2355.32	3317214.76	1363606.68	40.3259149	-104.3622427	0.00	

Planned Wellpath Report

Middlepark 18-4-1L PWP Rev-A.0

Page 7 of 10

REFERENCE WELLPATH IDENTIFICATION

Operator	CONFLUENCE RESOURCES	Well	Middlepark 18-4-1L
Field	WELD COUNTY (NAD83, TRUE NORTH)	API	0512347450
Facility	SEC.18-T04N-R62W	Wellbore	Middlepark 18-4-1L PWB
Slot	SLOT#03 Middlepark 18-4-1L (242'FSL & 1634'FWL,SEC.18)		

WELLPATH DATA (176 stations) † = interpolated, ‡ = extrapolated station

MD [ft]	Inclination [°]	Azimuth [°]	TVD [ft]	Vert Sect [ft]	North [ft]	East [ft]	Grid East [US ft]	Grid North [US ft]	Latitude	Longitude	DLS [°/100ft]	Comments
14323.00†	90.000	359.087	6221.00	7754.58	7413.51	2353.73	3317211.89	1363706.64	40.3261893	-104.3622484	0.00	
14423.00†	90.000	359.087	6221.00	7851.58	7513.50	2352.14	3317209.03	1363806.59	40.3264638	-104.3622541	0.00	
14523.00†	90.000	359.087	6221.00	7948.58	7613.49	2350.54	3317206.16	1363906.55	40.3267382	-104.3622598	0.00	
14623.00†	90.000	359.087	6221.00	8045.59	7713.47	2348.95	3317203.29	1364006.50	40.3270127	-104.3622655	0.00	
14723.00†	90.000	359.087	6221.00	8142.59	7813.46	2347.36	3317200.43	1364106.46	40.3272872	-104.3622711	0.00	
14823.00†	90.000	359.087	6221.00	8239.59	7913.45	2345.76	3317197.56	1364206.41	40.3275616	-104.3622768	0.00	
14923.00†	90.000	359.087	6221.00	8336.60	8013.44	2344.17	3317194.69	1364306.37	40.3278361	-104.3622825	0.00	
15023.00†	90.000	359.087	6221.00	8433.60	8113.42	2342.58	3317191.83	1364406.32	40.3281105	-104.3622882	0.00	
15123.00†	90.000	359.087	6221.00	8530.61	8213.41	2340.99	3317188.96	1364506.27	40.3283850	-104.3622939	0.00	
15223.00†	90.000	359.087	6221.00	8627.61	8313.40	2339.39	3317186.10	1364606.23	40.3286595	-104.3622995	0.00	
15323.00†	90.000	359.087	6221.00	8724.61	8413.38	2337.80	3317183.23	1364706.18	40.3289339	-104.3623052	0.00	
15423.00†	90.000	359.087	6221.00	8821.62	8513.37	2336.21	3317180.36	1364806.14	40.3292084	-104.3623109	0.00	
15523.00†	90.000	359.087	6221.00	8918.62	8613.36	2334.61	3317177.50	1364906.09	40.3294828	-104.3623166	0.00	
15623.00†	90.000	359.087	6221.00	9015.62	8713.35	2333.02	3317174.63	1365006.05	40.3297573	-104.3623223	0.00	
15723.00†	90.000	359.087	6221.00	9112.63	8813.33	2331.43	3317171.76	1365106.00	40.3300317	-104.3623279	0.00	
15823.00†	90.000	359.087	6221.00	9209.63	8913.32	2329.83	3317168.90	1365205.96	40.3303062	-104.3623336	0.00	
15923.00†	90.000	359.087	6221.00	9306.63	9013.31	2328.24	3317166.03	1365305.91	40.3305807	-104.3623393	0.00	
16023.00†	90.000	359.087	6221.00	9403.64	9113.30	2326.65	3317163.17	1365405.86	40.3308551	-104.3623450	0.00	
16123.00†	90.000	359.087	6221.00	9500.64	9213.28	2325.05	3317160.30	1365505.82	40.3311296	-104.3623507	0.00	
16223.00†	90.000	359.087	6221.00	9597.64	9313.27	2323.46	3317157.43	1365605.77	40.3314040	-104.3623563	0.00	
16323.00†	90.000	359.087	6221.00	9694.65	9413.26	2321.87	3317154.57	1365705.73	40.3316785	-104.3623620	0.00	
16423.00†	90.000	359.087	6221.00	9791.65	9513.24	2320.27	3317151.70	1365805.68	40.3319530	-104.3623677	0.00	
16523.00†	90.000	359.087	6221.00	9888.65	9613.23	2318.68	3317148.83	1365905.64	40.3322274	-104.3623734	0.00	
16623.00†	90.000	359.087	6221.00	9985.66	9713.22	2317.09	3317145.97	1366005.59	40.3325019	-104.3623791	0.00	
16723.00†	90.000	359.087	6221.00	10082.66	9813.21	2315.50	3317143.10	1366105.55	40.3327763	-104.3623847	0.00	
16815.42	90.000	359.087	6221.00 ³	10172.31	9905.62	2314.02	3317140.45	1366197.93	40.3330300	-104.3623900	0.00	TD

REFERENCE WELLPATH IDENTIFICATION

Operator	CONFLUENCE RESOURCES	Well	Middlepark 18-4-1L
Field	WELD COUNTY (NAD83, TRUE NORTH)	API	0512347450
Facility	SEC.18-T04N-R62W	Wellbore	Middlepark 18-4-1L PWB
Slot	SLOT#03 Middlepark 18-4-1L (242'FSL & 1634'FWL,SEC.18)		

HOLE & CASING SECTIONS

- Ref Wellbore: Middlepark 18-4-1L PWB Ref Wellpath: Middlepark 18-4-1L PWP Rev-A.0

String/Diameter	Start MD [ft]	End MD [ft]	Interval [ft]	Start TVD [ft]	End TVD [ft]	Start N/S [ft]	Start E/W [ft]	End N/S [ft]	End E/W [ft]
9.625in Casing Surface	23.00	1709.98	1686.98	23.00	1650.00	0.00	0.00	-59.11	354.41

TARGETS

Name	MD [ft]	TVD [ft]	North [ft]	East [ft]	Grid East [US ft]	Grid North [US ft]	Latitude	Longitude	Shape
SEC.07-T04N-R62W	N/A	0.00	-36.43	30.68	3314984.00	1356228.05	40.3057400	-104.3705800	polygon
	2D Polygon: dimensions not calculated								
SEC.07/18-T04N-R62W (SB 470')	N/A	0.00	-36.43	30.68	3314984.00	1356228.05	40.3057400	-104.3705800	polygon
	2D Polygon: dimensions not calculated								
SEC.18-T04N-R62W	N/A	0.00	-36.43	30.68	3314984.00	1356228.05	40.3057400	-104.3705800	polygon
	2D Polygon: dimensions not calculated								
3) Middlepark 18-4-1L BHL REV-1 (470'FNL & 1015'FEL,SEC.07)	16815.42	6221.00	9905.62	2314.02	3317140.45	1366197.93	40.3330300	-104.3623900	point
1) Middlepark 18-4-1L LP REV-1 (470'FSL & 1213'FEL,SEC.18)	7108.23	6221.00	200.50	2510.17	3317460.16	1356496.52	40.3063900	-104.3616900	point
2) Middlepark 18-4-1L TP1 REV-1 (0'FNL & 1180'FEL,SEC.18)	12067.90	6221.00	5158.70	2389.76	3317276.63	1361452.57	40.3200000	-104.3621200	point

REFERENCE WELLPATH IDENTIFICATION

Operator	CONFLUENCE RESOURCES	Well	Middlepark 18-4-1L
Field	WELD COUNTY (NAD83, TRUE NORTH)	API	0512347450
Facility	SEC.18-T04N-R62W	Wellbore	Middlepark 18-4-1L PWB
Slot	SLOT#03 Middlepark 18-4-1L (242'FSL & 1634'FWL,SEC.18)		

SURVEY PROGRAM - Ref Wellbore: Middlepark 18-4-1L PWB Ref Wellpath: Middlepark 18-4-1L PWP Rev-A.0

Start MD [ft]	End MD [ft]	Positional Uncertainty Model	Log Name/Comment	Wellbore
23.00	1709.98	BH NaviTrak (2019) (Axial)		Middlepark 18-4-1L PWB
1709.98	16815.42	BH AutoTrak Curve/eXpress (2019) (Short spacing)		Middlepark 18-4-1L PWB

Planned Wellpath Report

Middlepark 18-4-1L PWP Rev-A.0

Page 10 of 10

REFERENCE WELLPATH IDENTIFICATION

Operator	CONFLUENCE RESOURCES	Well	Middlepark 18-4-1L
Field	WELD COUNTY (NAD83, TRUE NORTH)	API	0512347450
Facility	SEC.18-T04N-R62W	Wellbore	Middlepark 18-4-1L PWB
Slot	SLOT#03 Middlepark 18-4-1L (242'FSL & 1634'FWL,SEC.18)		

DESIGN COMMENTS

MD [ft]	Inclination [°]	Azimuth [°]	TVD [ft]	Comment
23.00	0.000	99.469	23.00	Tie On
250.00	0.000	99.469	250.00	End of Tangent
1535.49	25.710	99.469	1492.79	Build (XS)
6161.35	25.710	99.469	5660.69	KOP
7108.23	90.000	358.609	6221.00	LANDING
12067.90	90.000	358.609	6221.00	TP1
12091.81	90.000	359.087	6221.00	3D Arc (J)
16815.42	90.000	359.087	6221.00	TD