

CONFLUENCE RESOURCES



Location:	COLORADO	Slot:	SLOT#01 Middlepark 18-3-2L (202FSL & 1664FWL,SEC.18)
Field:	WELD COUNTY (NAD83, TRUE NORTH)	Well:	Middlepark 18-3-2L
Facility:	SEC.18-T04N-R62W	Wellbore:	Middlepark 18-3-2L PWB
Plot reference wellpath is Middlepark 18-3-2L PWP RevA.0		Grid System: NAD83 / Lambert Colorado SP, Northern Zone (501), US feet	
True vertical depths are referenced to Rig (23) (KB)		North Reference: True north	
Reference wellpath measured depths are referenced to Rig (23) (KB)		Scale: True distance	
Rig (23) (KB) to Mean Sea Level: 4586 feet		Coordinates are in feet referenced to Slot	
Mean Sea Level to Mud line (At Slot: SLOT#01 Middlepark 18-3-2L (202FSL & 1664FWL,SEC.18)): 0 feet		Depths are in feet	
Offset wellpath MDs are referenced to each path's default MD datum		Created by: painsetr on 2021-12-01; Database: WellArchitectDB	

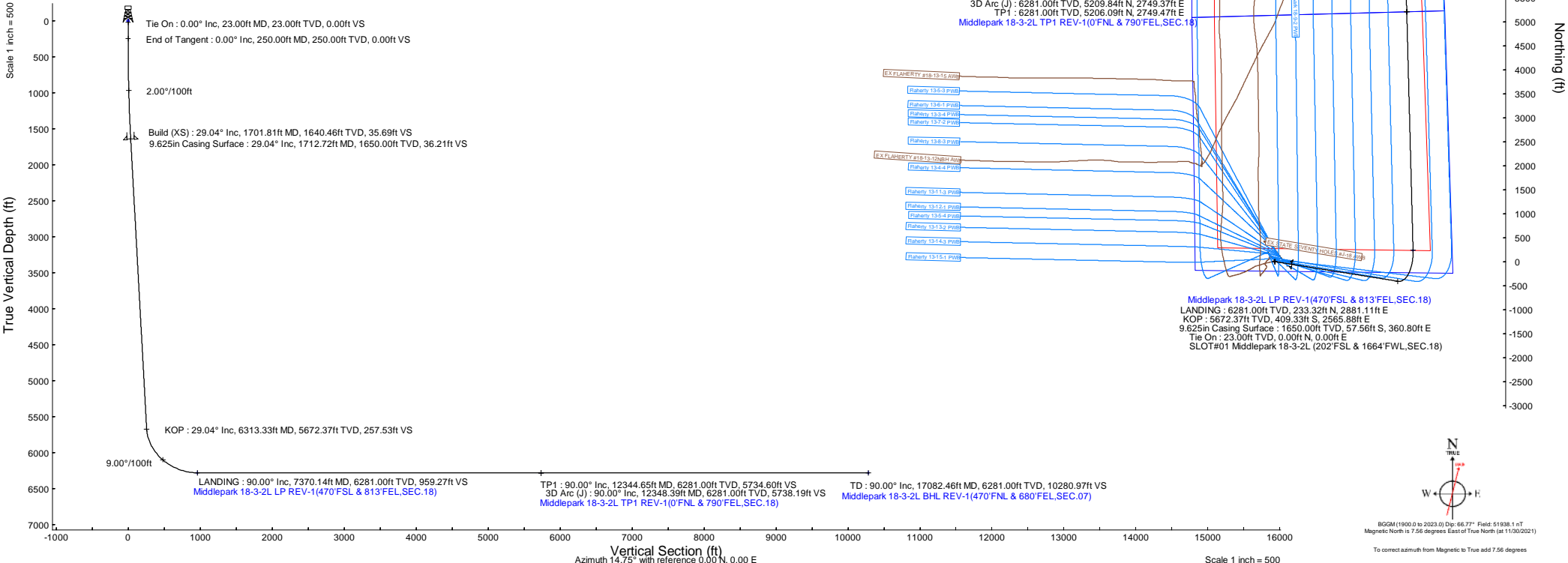
Location Information				
Facility Name	Grid East (US ft)	Grid North (US ft)	Latitude	Longitude
SEC.18-T04N-R62W	3314967.040	1366246.051	40.3057900°	-104.3706400°
Slot	Local N (ft)	Local E (ft)	Latitude	Longitude
SLOT#01 Middlepark 18-3-2L (202FSL & 1664FWL,SEC.18)	-18.22	16.73	40.3057400°	-104.3705800°
Rig (23) (KB) to Mud line (At Slot: SLOT#01 Middlepark 18-3-2L (202FSL & 1664FWL,SEC.18))			4586ft	
Mean Sea Level to Mud line (At Slot: SLOT#01 Middlepark 18-3-2L (202FSL & 1664FWL,SEC.18))			0ft	
Rig (23) (KB) to Mean Sea Level			4586ft	

Hole and Casing Sections										
Name	Start MD (ft)	End MD (ft)	Interval (ft)	Start TVD (ft)	End TVD (ft)	Start Local N (ft)	Start Local E (ft)	End Local N (ft)	End Local E (ft)	Wellbore
9.625in Casing Surface	23.00	1712.72	1689.72	23.00	1650.00	0.00	0.00	-57.56	360.80	Middlepark 18-3-2L PWB

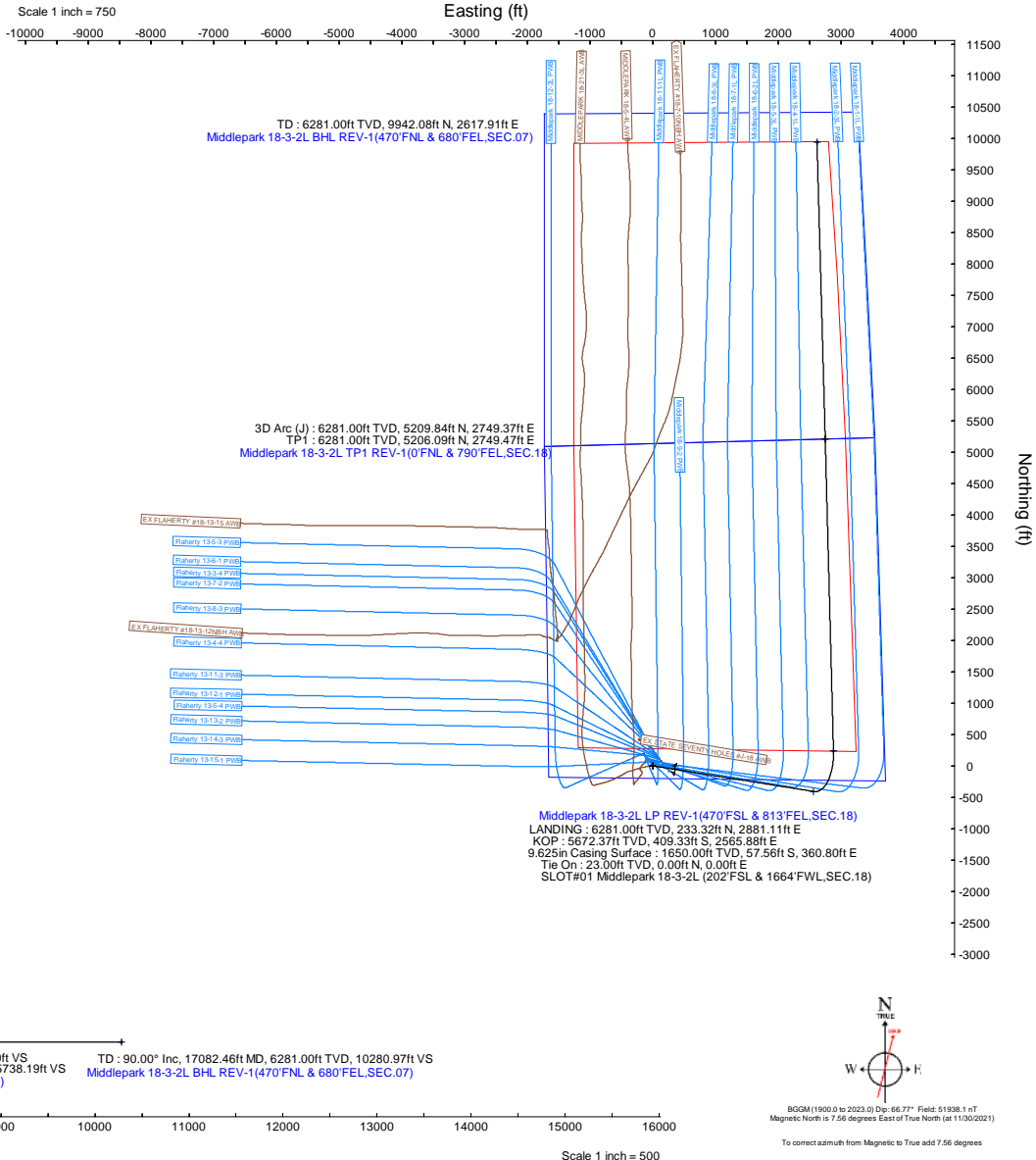
Survey Program				
Start MD (ft)	End MD (ft)	Tool	Model	Log Name/Comment
23.00	1712.72	BH NavTrak (2019)	BH NavTrak (2019) (Axial)	
1712.72	17082.46	BH AutoTrak Curve/xpress (2019)	BH AutoTrak Curve/xpress (2019) (Short spacing)	

Bottom Hole Location									
MD (ft)	Inc (°)	Az (°)	TVD (ft)	Local N (ft)	Local E (ft)	Grid East (US ft)	Grid North (US ft)	Latitude	Longitude
17082.46	90.000	358.409	6281.00	9942.08	2617.91	3317474.97	1366202.22	40.3330300°	-104.3611900°

Targets									
Name	MD (ft)	TVD (ft)	Local N (ft)	Local E (ft)	Grid East (US ft)	Grid North (US ft)	Latitude	Longitude	
SEC.07-T04N-R62W	N/A	0.00	0.00	0.00	3314984.00	1366228.05	40.3057400°	-104.3705800°	
SEC.07/18-T04N-R62W (SB 470)	N/A	0.00	0.00	0.00	3314984.00	1366228.05	40.3057400°	-104.3705800°	
SEC.13-T04N-R63W	N/A	0.00	0.00	0.00	3314984.00	1366228.05	40.3057400°	-104.3705800°	
SEC.13-T04N-R63W (SB 470)	N/A	0.00	0.00	0.00	3314984.00	1366228.05	40.3057400°	-104.3705800°	
SEC.18-T04N-R62W	N/A	0.00	0.00	0.00	3314984.00	1366228.05	40.3057400°	-104.3705800°	
Middlepark 18-3-2L BHL REV-1(470FNL & 680FEL,SEC.07)	17082.46	6281.00	9942.08	2617.91	3317474.97	1366202.22	40.3330300°	-104.3611900°	
Middlepark 18-3-2L LP REV-1(470FSL & 813FEL,SEC.18)	7370.14	6281.00	233.32	2881.11	3317861.78	1366498.04	40.3063800°	-104.3602500°	
Middlepark 18-3-2L TP1 REV-1(0FNL & 790FEL,SEC.18)	12344.65	6281.00	5206.09	2749.47	3317666.83	1361468.51	40.3200300°	-104.3607200°	



Well Profile Data								
Design Comment	MD (ft)	Inc (°)	Az (°)	TVD (ft)	Local N (ft)	Local E (ft)	DLS (°/100ft)	VS (ft)
Tie On	23.00	0.000	99.064	23.00	0.00	0.00	0.00	0.00
End of Tangent	250.00	0.000	99.064	250.00	0.00	0.00	0.00	0.00
Build (XS)	1701.81	29.036	99.064	1640.46	-56.72	355.57	2.00	35.69
KOP	6313.33	29.036	99.064	5672.37	-409.33	2565.88	0.00	257.53
LANDING	7370.14	90.000	358.484	6281.00	233.32	2881.11	9.00	959.27
TP1	12344.65	90.000	358.484	6281.00	5206.09	2749.47	0.00	5734.60
3D Arc (J)	12348.39	90.000	358.409	6281.00	5209.84	2749.37	2.00	5738.19
TD	17082.46	90.000	358.409	6281.00	9942.08	2617.91	0.00	10280.97



BGM(1980.0 to 2023.0) Dp: 66.77° Field: 51938.1 mT
Magnetic North is 7.56 degrees East of True North (at 11/30/2021)
To correct azimuth from Magnetic to True add 7.56 degrees

Planned Wellpath Report

Middlepark 18-3-2L PWP Rev-A.0

Page 1 of 10

REFERENCE WELLPATH IDENTIFICATION

Operator	CONFLUENCE RESOURCES	Well	Middlepark 18-3-2L
Field	WELD COUNTY (NAD83, TRUE NORTH)	API	0512347442
Facility	SEC.18-T04N-R62W	Wellbore	Middlepark 18-3-2L PWB
Slot	SLOT#01 Middlepark 18-3-2L (202'FSL & 1664'FWL,SEC.18)		

REPORT SETUP INFORMATION

Projection System	NAD83 / Lambert Colorado SP, Northern Zone (501), US feet	Software System	WellArchitect® 6.0
North Reference	True	User	Painsetr
Scale	0.999957	Report Generated	12/1/2021 at 2:17:58 PM
Convergence at slot	0.73° East	Database	WellArchitectDB

WELLPATH LOCATION

	Local coordinates		Grid coordinates		Geographic coordinates	
	North[ft]	East[ft]	Easting[US ft]	Northing[US ft]	Latitude	Longitude
Slot Location	-18.22	16.73	3314984.00	1356228.05	40.3057400°	-104.3705800°
Facility Reference Pt			3314967.04	1356246.05	40.3057900°	-104.3706400°
Field Reference Pt			3230456.90	1245096.09	40.0032400°	-104.6773400°

WELLPATH DATUM

Calculation method	Minimum curvature	Rig (23') (KB) to Facility Vertical Datum	4586.00ft
Horizontal Reference Pt	Slot	Rig (23') (KB) to Mean Sea Level	4586.00ft
Vertical Reference Pt	Rig (23') (KB)	Rig (23') (KB) to Mud Line at Slot (SLOT#01 Middlepark 18-3-2L (202'FSL & 1664'FWL,SEC.18))	4586.00ft
MD Reference Pt	Rig (23') (KB)	Section Origin	N 0.00, E 0.00 ft
Field Vertical Reference	Mean Sea Level	Section Azimuth	14.75°

Planned Wellpath Report

Middlepark 18-3-2L PWP Rev-A.0

Page 2 of 10

REFERENCE WELLPATH IDENTIFICATION

Operator	CONFLUENCE RESOURCES	Well	Middlepark 18-3-2L
Field	WELD COUNTY (NAD83, TRUE NORTH)	API	0512347442
Facility	SEC.18-T04N-R62W	Wellbore	Middlepark 18-3-2L PWB
Slot	SLOT#01 Middlepark 18-3-2L (202'FSL & 1664'FWL,SEC.18)		

WELLPATH DATA (179 stations) † = interpolated, ‡ = extrapolated station

MD [ft]	Inclination [°]	Azimuth [°]	TVD [ft]	Vert Sect [ft]	North [ft]	East [ft]	Grid East [US ft]	Grid North [US ft]	Latitude	Longitude	DLS [°/100ft]	Comments
0.00†	0.000	99.064	0.00	0.00	0.00	0.00	3314984.00	1356228.05	40.3057400	-104.3705800	0.00	
23.00	0.000	99.064	23.00	0.00	0.00	0.00	3314984.00	1356228.05	40.3057400	-104.3705800	0.00	Tie On
123.00†	0.000	99.064	123.00	0.00	0.00	0.00	3314984.00	1356228.05	40.3057400	-104.3705800	0.00	
223.00†	0.000	99.064	223.00	0.00	0.00	0.00	3314984.00	1356228.05	40.3057400	-104.3705800	0.00	
250.00	0.000	99.064	250.00	0.00	0.00	0.00	3314984.00	1356228.05	40.3057400	-104.3705800	0.00	End of Tangent
323.00†	1.460	99.064	322.99	0.09	-0.15	0.92	3314984.92	1356227.92	40.3057396	-104.3705767	2.00	
423.00†	3.460	99.064	422.89	0.52	-0.82	5.16	3314989.17	1356227.29	40.3057377	-104.3705615	2.00	
523.00†	5.460	99.064	522.59	1.29	-2.05	12.84	3314996.86	1356226.17	40.3057344	-104.3705340	2.00	
623.00†	7.460	99.064	621.95	2.40	-3.82	23.95	3315008.00	1356224.54	40.3057295	-104.3704941	2.00	
723.00†	9.460	99.064	720.85	3.86	-6.14	38.47	3315022.55	1356222.40	40.3057232	-104.3704421	2.00	
823.00†	11.460	99.064	819.19	5.66	-9.00	56.40	3315040.51	1356219.77	40.3057153	-104.3703778	2.00	
923.00†	13.460	99.064	916.83	7.80	-12.40	77.71	3315061.86	1356216.65	40.3057060	-104.3703014	2.00	
1023.00†	15.460	99.064	1013.65	10.27	-16.33	102.36	3315086.56	1356213.03	40.3056952	-104.3702130	2.00	
1123.00†	17.460	99.064	1109.55	13.08	-20.79	130.34	3315114.60	1356208.92	40.3056829	-104.3701127	2.00	
1223.00†	19.460	99.064	1204.40	16.22	-25.78	161.61	3315145.92	1356204.33	40.3056692	-104.3700006	2.00	
1323.00†	21.460	99.064	1298.09	19.68	-31.29	196.13	3315180.50	1356199.27	40.3056541	-104.3698768	2.00	
1423.00†	23.460	99.064	1390.50	23.47	-37.31	233.85	3315218.30	1356193.73	40.3056376	-104.3697416	2.00	
1523.00†	25.460	99.064	1481.52	27.57	-43.83	274.74	3315259.27	1356187.73	40.3056197	-104.3695950	2.00	
1623.00†	27.460	99.064	1571.04	31.99	-50.85	318.74	3315303.35	1356181.27	40.3056004	-104.3694372	2.00	
1701.81	29.036	99.064	1640.46	35.69	-56.72	355.57	3315340.25	1356175.86	40.3055843	-104.3693051	2.00	Build (XS)
1723.00†	29.036	99.064	1658.99	36.71	-58.34	365.73	3315350.43	1356174.37	40.3055798	-104.3692687	0.00	
1823.00†	29.036	99.064	1746.42	41.52	-65.99	413.66	3315398.45	1356167.34	40.3055589	-104.3690969	0.00	
1923.00†	29.036	99.064	1833.85	46.33	-73.64	461.59	3315446.47	1356160.30	40.3055379	-104.3689250	0.00	
2023.00†	29.036	99.064	1921.28	51.14	-81.28	509.52	3315494.49	1356153.27	40.3055169	-104.3687532	0.00	
2123.00†	29.036	99.064	2008.71	55.95	-88.93	557.45	3315542.51	1356146.23	40.3054959	-104.3685813	0.00	
2223.00†	29.036	99.064	2096.14	60.76	-96.57	605.38	3315590.54	1356139.20	40.3054749	-104.3684095	0.00	
2323.00†	29.036	99.064	2183.57	65.57	-104.22	653.31	3315638.56	1356132.16	40.3054539	-104.3682376	0.00	
2423.00†	29.036	99.064	2271.01	70.38	-111.87	701.24	3315686.58	1356125.13	40.3054329	-104.3680658	0.00	
2523.00†	29.036	99.064	2358.44	75.19	-119.51	749.17	3315734.60	1356118.09	40.3054119	-104.3678940	0.00	
2623.00†	29.036	99.064	2445.87	80.00	-127.16	797.10	3315782.62	1356111.06	40.3053909	-104.3677221	0.00	

REFERENCE WELLPATH IDENTIFICATION

Operator	CONFLUENCE RESOURCES	Well	Middlepark 18-3-2L
Field	WELD COUNTY (NAD83, TRUE NORTH)	API	0512347442
Facility	SEC.18-T04N-R62W	Wellbore	Middlepark 18-3-2L PWB
Slot	SLOT#01 Middlepark 18-3-2L (202'FSL & 1664'FWL,SEC.18)		

WELLPATH DATA (179 stations) † = interpolated, ‡ = extrapolated station

MD [ft]	Inclination [°]	Azimuth [°]	TVD [ft]	Vert Sect [ft]	North [ft]	East [ft]	Grid East [US ft]	Grid North [US ft]	Latitude	Longitude	DLS [°/100ft]	Comments
2723.00†	29.036	99.064	2533.30	84.81	-134.81	845.03	3315830.64	1356104.02	40.3053699	-104.3675503	0.00	
2823.00†	29.036	99.064	2620.73	89.62	-142.45	892.96	3315878.67	1356096.99	40.3053489	-104.3673784	0.00	
2923.00†	29.036	99.064	2708.16	94.43	-150.10	940.89	3315926.69	1356089.95	40.3053279	-104.3672066	0.00	
3023.00†	29.036	99.064	2795.59	99.25	-157.74	988.82	3315974.71	1356082.92	40.3053069	-104.3670347	0.00	
3123.00†	29.036	99.064	2883.02	104.06	-165.39	1036.75	3316022.73	1356075.89	40.3052860	-104.3668629	0.00	
3223.00†	29.036	99.064	2970.46	108.87	-173.04	1084.68	3316070.75	1356068.85	40.3052650	-104.3666910	0.00	
3323.00†	29.036	99.064	3057.89	113.68	-180.68	1132.61	3316118.77	1356061.82	40.3052440	-104.3665192	0.00	
3423.00†	29.036	99.064	3145.32	118.49	-188.33	1180.54	3316166.79	1356054.78	40.3052230	-104.3663473	0.00	
3523.00†	29.036	99.064	3232.75	123.30	-195.98	1228.47	3316214.82	1356047.75	40.3052020	-104.3661755	0.00	
3623.00†	29.036	99.064	3320.18	128.11	-203.62	1276.40	3316262.84	1356040.71	40.3051810	-104.3660036	0.00	
3723.00†	29.036	99.064	3407.61	132.92	-211.27	1324.33	3316310.86	1356033.68	40.3051600	-104.3658318	0.00	
3823.00†	29.036	99.064	3495.04	137.73	-218.91	1372.26	3316358.88	1356026.64	40.3051390	-104.3656600	0.00	
3923.00†	29.036	99.064	3582.47	142.54	-226.56	1420.19	3316406.90	1356019.61	40.3051180	-104.3654881	0.00	
4023.00†	29.036	99.064	3669.91	147.35	-234.21	1468.12	3316454.92	1356012.57	40.3050970	-104.3653163	0.00	
4123.00†	29.036	99.064	3757.34	152.16	-241.85	1516.05	3316502.95	1356005.54	40.3050760	-104.3651444	0.00	
4223.00†	29.036	99.064	3844.77	156.97	-249.50	1563.98	3316550.97	1355998.50	40.3050550	-104.3649726	0.00	
4323.00†	29.036	99.064	3932.20	161.78	-257.15	1611.91	3316598.99	1355991.47	40.3050340	-104.3648007	0.00	
4423.00†	29.036	99.064	4019.63	166.59	-264.79	1659.84	3316647.01	1355984.43	40.3050130	-104.3646289	0.00	
4523.00†	29.036	99.064	4107.06	171.40	-272.44	1707.77	3316695.03	1355977.40	40.3049920	-104.3644570	0.00	
4623.00†	29.036	99.064	4194.49	176.22	-280.08	1755.70	3316743.05	1355970.36	40.3049710	-104.3642852	0.00	
4723.00†	29.036	99.064	4281.93	181.03	-287.73	1803.63	3316791.08	1355963.33	40.3049500	-104.3641134	0.00	
4823.00†	29.036	99.064	4369.36	185.84	-295.38	1851.56	3316839.10	1355956.29	40.3049290	-104.3639415	0.00	
4923.00†	29.036	99.064	4456.79	190.65	-303.02	1899.49	3316887.12	1355949.26	40.3049080	-104.3637697	0.00	
5023.00†	29.036	99.064	4544.22	195.46	-310.67	1947.42	3316935.14	1355942.22	40.3048870	-104.3635978	0.00	
5123.00†	29.036	99.064	4631.65	200.27	-318.31	1995.35	3316983.16	1355935.19	40.3048660	-104.3634260	0.00	
5223.00†	29.036	99.064	4719.08	205.08	-325.96	2043.28	3317031.18	1355928.15	40.3048450	-104.3632541	0.00	
5323.00†	29.036	99.064	4806.51	209.89	-333.61	2091.21	3317079.20	1355921.12	40.3048240	-104.3630823	0.00	
5423.00†	29.036	99.064	4893.94	214.70	-341.25	2139.14	3317127.23	1355914.08	40.3048030	-104.3629104	0.00	
5523.00†	29.036	99.064	4981.38	219.51	-348.90	2187.08	3317175.25	1355907.05	40.3047820	-104.3627386	0.00	
5623.00†	29.036	99.064	5068.81	224.32	-356.55	2235.01	3317223.27	1355900.01	40.3047610	-104.3625668	0.00	

REFERENCE WELLPATH IDENTIFICATION

Operator	CONFLUENCE RESOURCES	Well	Middlepark 18-3-2L
Field	WELD COUNTY (NAD83, TRUE NORTH)	API	0512347442
Facility	SEC.18-T04N-R62W	Wellbore	Middlepark 18-3-2L PWB
Slot	SLOT#01 Middlepark 18-3-2L (202'FSL & 1664'FWL,SEC.18)		

WELLPATH DATA (179 stations) † = interpolated, ‡ = extrapolated station

MD [ft]	Inclination [°]	Azimuth [°]	TVD [ft]	Vert Sect [ft]	North [ft]	East [ft]	Grid East [US ft]	Grid North [US ft]	Latitude	Longitude	DLS [°/100ft]	Comments
5723.00†	29.036	99.064	5156.24	229.13	-364.19	2282.94	3317271.29	1355892.98	40.3047400	-104.3623949	0.00	
5823.00†	29.036	99.064	5243.67	233.94	-371.84	2330.87	3317319.31	1355885.95	40.3047190	-104.3622231	0.00	
5923.00†	29.036	99.064	5331.10	238.75	-379.48	2378.80	3317367.33	1355878.91	40.3046980	-104.3620512	0.00	
6023.00†	29.036	99.064	5418.53	243.56	-387.13	2426.73	3317415.36	1355871.88	40.3046770	-104.3618794	0.00	
6123.00†	29.036	99.064	5505.96	248.37	-394.78	2474.66	3317463.38	1355864.84	40.3046560	-104.3617075	0.00	
6223.00†	29.036	99.064	5593.39	253.18	-402.42	2522.59	3317511.40	1355857.81	40.3046350	-104.3615357	0.00	
6313.33	29.036	99.064	5672.37	257.53	-409.33	2565.88	3317554.78	1355851.45	40.3046160	-104.3613805	0.00	KOP
6323.00†	28.908	97.286	5680.83	258.07	-410.00	2570.52	3317559.42	1355850.84	40.3046142	-104.3613639	9.00	
6423.00†	28.981	78.627	5768.52	271.90	-408.28	2618.34	3317607.22	1355853.17	40.3046189	-104.3611924	9.00	
6523.00†	31.502	61.411	5855.07	300.56	-390.97	2665.13	3317653.78	1355871.08	40.3046664	-104.3610246	9.00	
6623.00†	35.956	47.274	5938.34	343.33	-358.48	2709.73	3317697.96	1355904.13	40.3047556	-104.3608647	9.00	
6723.00†	41.722	36.218	6016.30	399.17	-311.62	2751.04	3317738.67	1355951.51	40.3048842	-104.3607166	9.00	
6823.00†	48.324	27.548	6087.01	466.70	-251.53	2788.05	3317774.91	1356012.06	40.3050491	-104.3605839	9.00	
6923.00†	55.453	20.552	6148.74	544.25	-179.71	2819.85	3317805.78	1356084.27	40.3052463	-104.3604698	9.00	
7023.00†	62.917	14.687	6199.96	629.91	-97.92	2845.64	3317830.54	1356166.38	40.3054708	-104.3603773	9.00	
7123.00†	70.593	9.567	6239.42	721.58	-8.17	2864.81	3317848.56	1356256.37	40.3057171	-104.3603086	9.00	
7223.00†	78.400	4.915	6266.14	817.01	87.33	2876.87	3317859.40	1356352.01	40.3059793	-104.3602653	9.00	
7323.00†	86.277	0.519	6279.47	913.83	186.22	2881.52	3317862.79	1356450.95	40.3062507	-104.3602485	9.00	
7370.14	90.000	358.484	6281.00†	959.27	233.32	2881.11	3317861.78	1356498.04	40.3063800	-104.3602500	9.00	LANDING
7423.00†	90.000	358.484	6281.00	1010.01	286.17	2879.71	3317859.71	1356550.86	40.3065251	-104.3602550	0.00	
7523.00†	90.000	358.484	6281.00	1106.01	386.13	2877.07	3317855.79	1356650.78	40.3067995	-104.3602644	0.00	
7623.00†	90.000	358.484	6281.00	1202.01	486.10	2874.42	3317851.87	1356750.69	40.3070738	-104.3602739	0.00	
7723.00†	90.000	358.484	6281.00	1298.00	586.06	2871.78	3317847.96	1356850.61	40.3073482	-104.3602833	0.00	
7823.00†	90.000	358.484	6281.00	1394.00	686.03	2869.13	3317844.04	1356950.53	40.3076226	-104.3602928	0.00	
7923.00†	90.000	358.484	6281.00	1489.99	785.99	2866.48	3317840.12	1357050.45	40.3078970	-104.3603022	0.00	
8023.00†	90.000	358.484	6281.00	1585.99	885.96	2863.84	3317836.20	1357150.37	40.3081714	-104.3603117	0.00	
8123.00†	90.000	358.484	6281.00	1681.99	985.92	2861.19	3317832.28	1357250.29	40.3084458	-104.3603211	0.00	
8223.00†	90.000	358.484	6281.00	1777.98	1085.89	2858.54	3317828.36	1357350.21	40.3087202	-104.3603306	0.00	
8323.00†	90.000	358.484	6281.00	1873.98	1185.85	2855.90	3317824.44	1357450.13	40.3089946	-104.3603400	0.00	
8423.00†	90.000	358.484	6281.00	1969.97	1285.82	2853.25	3317820.52	1357550.04	40.3092690	-104.3603495	0.00	

REFERENCE WELLPATH IDENTIFICATION

Operator	CONFLUENCE RESOURCES	Well	Middlepark 18-3-2L
Field	WELD COUNTY (NAD83, TRUE NORTH)	API	0512347442
Facility	SEC.18-T04N-R62W	Wellbore	Middlepark 18-3-2L PWB
Slot	SLOT#01 Middlepark 18-3-2L (202'FSL & 1664'FWL,SEC.18)		

WELLPATH DATA (179 stations) † = interpolated, ‡ = extrapolated station

MD [ft]	Inclination [°]	Azimuth [°]	TVD [ft]	Vert Sect [ft]	North [ft]	East [ft]	Grid East [US ft]	Grid North [US ft]	Latitude	Longitude	DLS [°/100ft]	Comments
8523.00†	90.000	358.484	6281.00	2065.97	1385.78	2850.61	3317816.60	1357649.96	40.3095434	-104.3603589	0.00	
8623.00†	90.000	358.484	6281.00	2161.97	1485.75	2847.96	3317812.68	1357749.88	40.3098178	-104.3603684	0.00	
8723.00†	90.000	358.484	6281.00	2257.96	1585.71	2845.31	3317808.76	1357849.80	40.3100922	-104.3603778	0.00	
8823.00†	90.000	358.484	6281.00	2353.96	1685.68	2842.67	3317804.85	1357949.72	40.3103666	-104.3603872	0.00	
8923.00†	90.000	358.484	6281.00	2449.95	1785.64	2840.02	3317800.93	1358049.64	40.3106410	-104.3603967	0.00	
9023.00†	90.000	358.484	6281.00	2545.95	1885.61	2837.37	3317797.01	1358149.56	40.3109154	-104.3604061	0.00	
9123.00†	90.000	358.484	6281.00	2641.95	1985.57	2834.73	3317793.09	1358249.48	40.3111898	-104.3604156	0.00	
9223.00†	90.000	358.484	6281.00	2737.94	2085.54	2832.08	3317789.17	1358349.39	40.3114642	-104.3604250	0.00	
9323.00†	90.000	358.484	6281.00	2833.94	2185.50	2829.44	3317785.25	1358449.31	40.3117386	-104.3604345	0.00	
9423.00†	90.000	358.484	6281.00	2929.93	2285.47	2826.79	3317781.33	1358549.23	40.3120130	-104.3604439	0.00	
9523.00†	90.000	358.484	6281.00	3025.93	2385.43	2824.14	3317777.41	1358649.15	40.3122874	-104.3604534	0.00	
9623.00†	90.000	358.484	6281.00	3121.93	2485.40	2821.50	3317773.49	1358749.07	40.3125618	-104.3604628	0.00	
9723.00†	90.000	358.484	6281.00	3217.92	2585.36	2818.85	3317769.57	1358848.99	40.3128362	-104.3604723	0.00	
9823.00†	90.000	358.484	6281.00	3313.92	2685.33	2816.20	3317765.65	1358948.91	40.3131106	-104.3604817	0.00	
9923.00†	90.000	358.484	6281.00	3409.91	2785.29	2813.56	3317761.74	1359048.83	40.3133850	-104.3604912	0.00	
10023.00†	90.000	358.484	6281.00	3505.91	2885.26	2810.91	3317757.82	1359148.74	40.3136594	-104.3605006	0.00	
10123.00†	90.000	358.484	6281.00	3601.91	2985.22	2808.27	3317753.90	1359248.66	40.3139338	-104.3605101	0.00	
10223.00†	90.000	358.484	6281.00	3697.90	3085.19	2805.62	3317749.98	1359348.58	40.3142082	-104.3605195	0.00	
10323.00†	90.000	358.484	6281.00	3793.90	3185.15	2802.97	3317746.06	1359448.50	40.3144826	-104.3605290	0.00	
10423.00†	90.000	358.484	6281.00	3889.89	3285.12	2800.33	3317742.14	1359548.42	40.3147570	-104.3605384	0.00	
10523.00†	90.000	358.484	6281.00	3985.89	3385.08	2797.68	3317738.22	1359648.34	40.3150314	-104.3605479	0.00	
10623.00†	90.000	358.484	6281.00	4081.89	3485.05	2795.03	3317734.30	1359748.26	40.3153058	-104.3605573	0.00	
10723.00†	90.000	358.484	6281.00	4177.88	3585.01	2792.39	3317730.38	1359848.17	40.3155802	-104.3605668	0.00	
10823.00†	90.000	358.484	6281.00	4273.88	3684.98	2789.74	3317726.46	1359948.09	40.3158546	-104.3605762	0.00	
10923.00†	90.000	358.484	6281.00	4369.87	3784.94	2787.10	3317722.54	1360048.01	40.3161290	-104.3605857	0.00	
11023.00†	90.000	358.484	6281.00	4465.87	3884.91	2784.45	3317718.63	1360147.93	40.3164034	-104.3605951	0.00	
11123.00†	90.000	358.484	6281.00	4561.87	3984.87	2781.80	3317714.71	1360247.85	40.3166778	-104.3606046	0.00	
11223.00†	90.000	358.484	6281.00	4657.86	4084.84	2779.16	3317710.79	1360347.77	40.3169522	-104.3606140	0.00	
11323.00†	90.000	358.484	6281.00	4753.86	4184.80	2776.51	3317706.87	1360447.69	40.3172266	-104.3606235	0.00	
11423.00†	90.000	358.484	6281.00	4849.85	4284.77	2773.86	3317702.95	1360547.61	40.3175010	-104.3606329	0.00	

Planned Wellpath Report

Middlepark 18-3-2L PWP Rev-A.0

Page 6 of 10

REFERENCE WELLPATH IDENTIFICATION

Operator	CONFLUENCE RESOURCES	Well	Middlepark 18-3-2L
Field	WELD COUNTY (NAD83, TRUE NORTH)	API	0512347442
Facility	SEC.18-T04N-R62W	Wellbore	Middlepark 18-3-2L PWB
Slot	SLOT#01 Middlepark 18-3-2L (202'FSL & 1664'FWL,SEC.18)		

WELLPATH DATA (179 stations) † = interpolated, ‡ = extrapolated station

MD [ft]	Inclination [°]	Azimuth [°]	TVD [ft]	Vert Sect [ft]	North [ft]	East [ft]	Grid East [US ft]	Grid North [US ft]	Latitude	Longitude	DLS [°/100ft]	Comments
11523.00†	90.000	358.484	6281.00	4945.85	4384.73	2771.22	3317699.03	1360647.52	40.3177754	-104.3606424	0.00	
11623.00†	90.000	358.484	6281.00	5041.85	4484.70	2768.57	3317695.11	1360747.44	40.3180498	-104.3606518	0.00	
11723.00†	90.000	358.484	6281.00	5137.84	4584.66	2765.92	3317691.19	1360847.36	40.3183242	-104.3606613	0.00	
11823.00†	90.000	358.484	6281.00	5233.84	4684.63	2763.28	3317687.27	1360947.28	40.3185986	-104.3606707	0.00	
11923.00†	90.000	358.484	6281.00	5329.83	4784.59	2760.63	3317683.35	1361047.20	40.3188730	-104.3606802	0.00	
12023.00†	90.000	358.484	6281.00	5425.83	4884.56	2757.99	3317679.44	1361147.12	40.3191474	-104.3606896	0.00	
12123.00†	90.000	358.484	6281.00	5521.83	4984.52	2755.34	3317675.52	1361247.04	40.3194218	-104.3606991	0.00	
12223.00†	90.000	358.484	6281.00	5617.82	5084.49	2752.69	3317671.60	1361346.96	40.3196962	-104.3607085	0.00	
12323.00†	90.000	358.484	6281.00	5713.82	5184.45	2750.05	3317667.68	1361446.87	40.3199706	-104.3607180	0.00	
12344.65	90.000	358.484	6281.00 ²	5734.60	5206.09	2749.47	3317666.83	1361468.51	40.3200300	-104.3607200	0.00	TP1
12348.39	90.000	358.409	6281.00	5738.19	5209.84	2749.37	3317666.68	1361472.25	40.3200403	-104.3607204	2.00	3D Arc (J)
12423.00†	90.000	358.409	6281.00	5809.79	5284.41	2747.30	3317663.66	1361546.79	40.3202450	-104.3607278	0.00	
12523.00†	90.000	358.409	6281.00	5905.74	5384.37	2744.52	3317659.61	1361646.70	40.3205194	-104.3607377	0.00	
12623.00†	90.000	358.409	6281.00	6001.70	5484.34	2741.75	3317655.56	1361746.62	40.3207938	-104.3607476	0.00	
12723.00†	90.000	358.409	6281.00	6097.66	5584.30	2738.97	3317651.51	1361846.53	40.3210681	-104.3607575	0.00	
12823.00†	90.000	358.409	6281.00	6193.62	5684.26	2736.19	3317647.46	1361946.44	40.3213425	-104.3607674	0.00	
12923.00†	90.000	358.409	6281.00	6289.58	5784.22	2733.42	3317643.41	1362046.36	40.3216169	-104.3607774	0.00	
13023.00†	90.000	358.409	6281.00	6385.54	5884.18	2730.64	3317639.36	1362146.27	40.3218913	-104.3607873	0.00	
13123.00†	90.000	358.409	6281.00	6481.50	5984.14	2727.86	3317635.31	1362246.18	40.3221657	-104.3607972	0.00	
13223.00†	90.000	358.409	6281.00	6577.46	6084.10	2725.09	3317631.26	1362346.10	40.3224401	-104.3608071	0.00	
13323.00†	90.000	358.409	6281.00	6673.42	6184.07	2722.31	3317627.21	1362446.01	40.3227145	-104.3608170	0.00	
13423.00†	90.000	358.409	6281.00	6769.38	6284.03	2719.53	3317623.16	1362545.92	40.3229889	-104.3608270	0.00	
13523.00†	90.000	358.409	6281.00	6865.34	6383.99	2716.76	3317619.11	1362645.84	40.3232633	-104.3608369	0.00	
13623.00†	90.000	358.409	6281.00	6961.30	6483.95	2713.98	3317615.06	1362745.75	40.3235376	-104.3608468	0.00	
13723.00†	90.000	358.409	6281.00	7057.26	6583.91	2711.20	3317611.01	1362845.66	40.3238120	-104.3608567	0.00	
13823.00†	90.000	358.409	6281.00	7153.22	6683.87	2708.42	3317606.96	1362945.58	40.3240864	-104.3608666	0.00	
13923.00†	90.000	358.409	6281.00	7249.17	6783.83	2705.65	3317602.91	1363045.49	40.3243608	-104.3608765	0.00	
14023.00†	90.000	358.409	6281.00	7345.13	6883.80	2702.87	3317598.86	1363145.40	40.3246352	-104.3608865	0.00	
14123.00†	90.000	358.409	6281.00	7441.09	6983.76	2700.09	3317594.82	1363245.32	40.3249096	-104.3608964	0.00	
14223.00†	90.000	358.409	6281.00	7537.05	7083.72	2697.32	3317590.77	1363345.23	40.3251840	-104.3609063	0.00	

REFERENCE WELLPATH IDENTIFICATION

Operator	CONFLUENCE RESOURCES	Well	Middlepark 18-3-2L
Field	WELD COUNTY (NAD83, TRUE NORTH)	API	0512347442
Facility	SEC.18-T04N-R62W	Wellbore	Middlepark 18-3-2L PWB
Slot	SLOT#01 Middlepark 18-3-2L (202'FSL & 1664'FWL,SEC.18)		

WELLPATH DATA (179 stations) † = interpolated, ‡ = extrapolated station

MD [ft]	Inclination [°]	Azimuth [°]	TVD [ft]	Vert Sect [ft]	North [ft]	East [ft]	Grid East [US ft]	Grid North [US ft]	Latitude	Longitude	DLS [°/100ft]	Comments
14323.00†	90.000	358.409	6281.00	7633.01	7183.68	2694.54	3317586.72	1363445.15	40.3254584	-104.3609162	0.00	
14423.00†	90.000	358.409	6281.00	7728.97	7283.64	2691.76	3317582.67	1363545.06	40.3257327	-104.3609261	0.00	
14523.00†	90.000	358.409	6281.00	7824.93	7383.60	2688.99	3317578.62	1363644.97	40.3260071	-104.3609361	0.00	
14623.00†	90.000	358.409	6281.00	7920.89	7483.56	2686.21	3317574.57	1363744.89	40.3262815	-104.3609460	0.00	
14723.00†	90.000	358.409	6281.00	8016.85	7583.53	2683.43	3317570.52	1363844.80	40.3265559	-104.3609559	0.00	
14823.00†	90.000	358.409	6281.00	8112.81	7683.49	2680.66	3317566.47	1363944.71	40.3268303	-104.3609658	0.00	
14923.00†	90.000	358.409	6281.00	8208.77	7783.45	2677.88	3317562.42	1364044.63	40.3271047	-104.3609758	0.00	
15023.00†	90.000	358.409	6281.00	8304.73	7883.41	2675.10	3317558.37	1364144.54	40.3273791	-104.3609857	0.00	
15123.00†	90.000	358.409	6281.00	8400.69	7983.37	2672.32	3317554.32	1364244.45	40.3276535	-104.3609956	0.00	
15223.00†	90.000	358.409	6281.00	8496.65	8083.33	2669.55	3317550.27	1364344.37	40.3279279	-104.3610055	0.00	
15323.00†	90.000	358.409	6281.00	8592.60	8183.29	2666.77	3317546.22	1364444.28	40.3282022	-104.3610154	0.00	
15423.00†	90.000	358.409	6281.00	8688.56	8283.26	2663.99	3317542.17	1364544.19	40.3284766	-104.3610254	0.00	
15523.00†	90.000	358.409	6281.00	8784.52	8383.22	2661.22	3317538.12	1364644.11	40.3287510	-104.3610353	0.00	
15623.00†	90.000	358.409	6281.00	8880.48	8483.18	2658.44	3317534.07	1364744.02	40.3290254	-104.3610452	0.00	
15723.00†	90.000	358.409	6281.00	8976.44	8583.14	2655.66	3317530.02	1364843.93	40.3292998	-104.3610551	0.00	
15823.00†	90.000	358.409	6281.00	9072.40	8683.10	2652.89	3317525.97	1364943.85	40.3295742	-104.3610650	0.00	
15923.00†	90.000	358.409	6281.00	9168.36	8783.06	2650.11	3317521.92	1365043.76	40.3298486	-104.3610750	0.00	
16023.00†	90.000	358.409	6281.00	9264.32	8883.02	2647.33	3317517.87	1365143.67	40.3301230	-104.3610849	0.00	
16123.00†	90.000	358.409	6281.00	9360.28	8982.99	2644.56	3317513.82	1365243.59	40.3303973	-104.3610948	0.00	
16223.00†	90.000	358.409	6281.00	9456.24	9082.95	2641.78	3317509.77	1365343.50	40.3306717	-104.3611047	0.00	
16323.00†	90.000	358.409	6281.00	9552.20	9182.91	2639.00	3317505.72	1365443.42	40.3309461	-104.3611146	0.00	
16423.00†	90.000	358.409	6281.00	9648.16	9282.87	2636.23	3317501.67	1365543.33	40.3312205	-104.3611246	0.00	
16523.00†	90.000	358.409	6281.00	9744.12	9382.83	2633.45	3317497.62	1365643.24	40.3314949	-104.3611345	0.00	
16623.00†	90.000	358.409	6281.00	9840.08	9482.79	2630.67	3317493.57	1365743.16	40.3317693	-104.3611444	0.00	
16723.00†	90.000	358.409	6281.00	9936.03	9582.75	2627.89	3317489.52	1365843.07	40.3320437	-104.3611543	0.00	
16823.00†	90.000	358.409	6281.00	10031.99	9682.72	2625.12	3317485.48	1365942.98	40.3323181	-104.3611643	0.00	
16923.00†	90.000	358.409	6281.00	10127.95	9782.68	2622.34	3317481.43	1366042.90	40.3325925	-104.3611742	0.00	
17023.00†	90.000	358.409	6281.00	10223.91	9882.64	2619.56	3317477.38	1366142.81	40.3328668	-104.3611841	0.00	
17082.46	90.000	358.409	6281.00‡	10280.97	9942.08	2617.91	3317474.97	1366202.22	40.3330300	-104.3611900	0.00	TD

HOLE & CASING SECTIONS

- Ref Wellbore: Middlepark 18-3-2L PWB Ref Wellpath: Middlepark 18-3-2L PWP Rev-A.0

String/Diameter	Start MD [ft]	End MD [ft]	Interval [ft]	Start TVD [ft]	End TVD [ft]	Start N/S [ft]	Start E/W [ft]	End N/S [ft]	End E/W [ft]
9.625in Casing Surface	23.00	1712.72	1689.72	23.00	1650.00	0.00	0.00	-57.56	360.80

[illegible]

Planned Wellpath Report

Middlepark 18-3-2L PWP Rev-A.0

Page 9 of 10

REFERENCE WELLPATH IDENTIFICATION			
Operator	CONFLUENCE RESOURCES	Well	Middlepark 18-3-2L
Field	WELD COUNTY (NAD83, TRUE NORTH)	API	0512347442
Facility	SEC.18-T04N-R62W	Wellbore	Middlepark 18-3-2L PWB
Slot	SLOT#01 Middlepark 18-3-2L (202'FSL & 1664'FWL,SEC.18)		

SURVEY PROGRAM - Ref Wellbore: Middlepark 18-3-2L PWB Ref Wellpath: Middlepark 18-3-2L PWP Rev-A.0				
Start MD [ft]	End MD [ft]	Positional Uncertainty Model	Log Name/Comment	Wellbore
23.00	1712.72	BH NaviTrak (2019) (Axial)		Middlepark 18-3-2L PWB
1712.72	17082.46	BH AutoTrak Curve/eXpress (2019) (Short spacing)		Middlepark 18-3-2L PWB

Planned Wellpath Report

Middlepark 18-3-2L PWP Rev-A.0

Page 10 of 10

REFERENCE WELLPATH IDENTIFICATION

Operator	CONFLUENCE RESOURCES	Well	Middlepark 18-3-2L
Field	WELD COUNTY (NAD83, TRUE NORTH)	API	0512347442
Facility	SEC.18-T04N-R62W	Wellbore	Middlepark 18-3-2L PWB
Slot	SLOT#01 Middlepark 18-3-2L (202'FSL & 1664'FWL,SEC.18)		

DESIGN COMMENTS

MD [ft]	Inclination [°]	Azimuth [°]	TVD [ft]	Comment
23.00	0.000	99.064	23.00	Tie On
250.00	0.000	99.064	250.00	End of Tangent
1701.81	29.036	99.064	1640.46	Build (XS)
6313.33	29.036	99.064	5672.37	KOP
7370.14	90.000	358.484	6281.00	LANDING
12344.65	90.000	358.484	6281.00	TP1
12348.39	90.000	358.409	6281.00	3D Arc (J)
17082.46	90.000	358.409	6281.00	TD