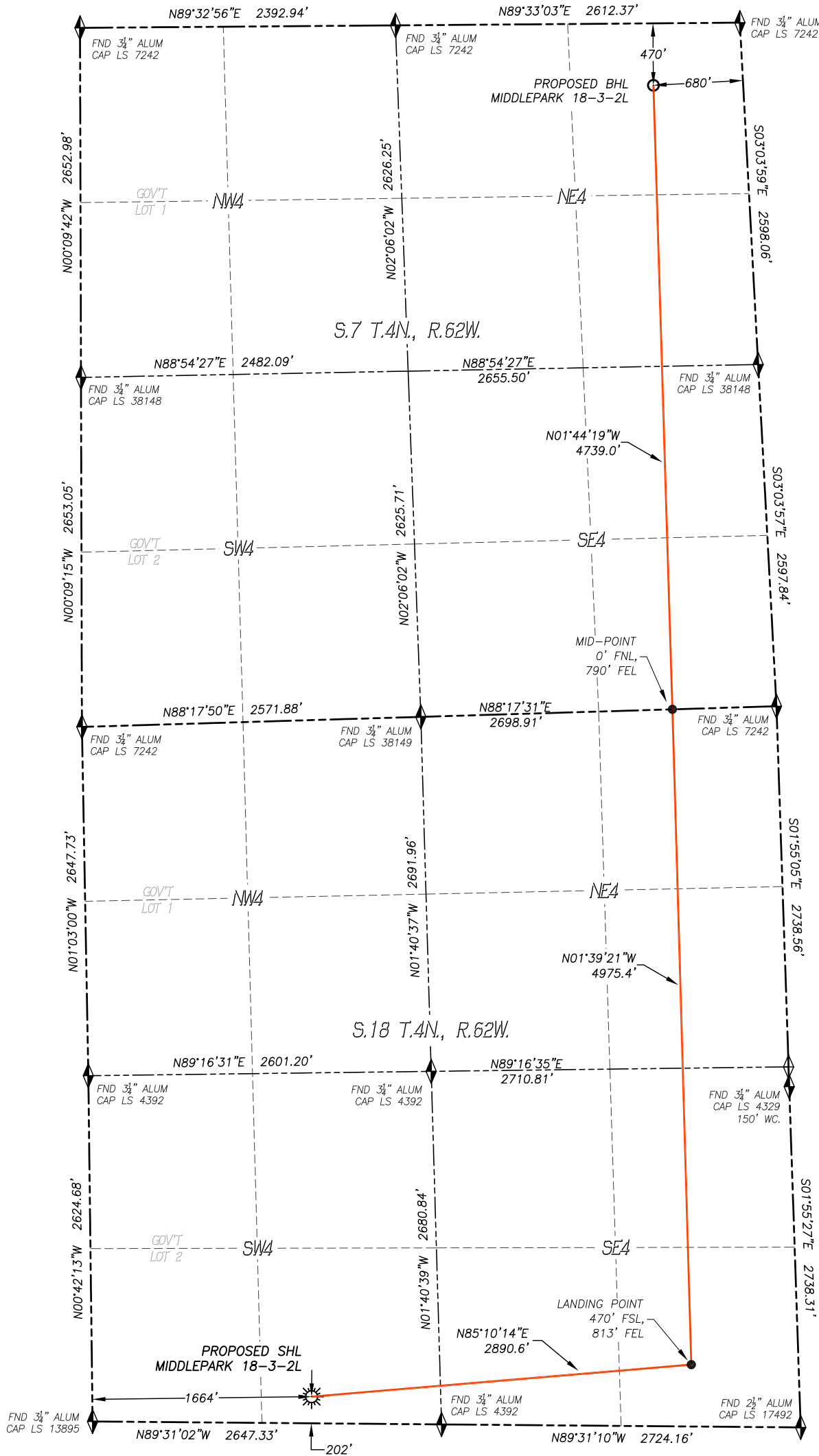


WELL LOCATION CERTIFICATE
MIDDLEPARK 18-3-2L

SECTION 18, TOWNSHIP 4 NORTH, RANGE 62 WEST OF THE 6TH P.M.



IN ACCORDANCE WITH A REQUEST FROM CONFLUENCE RESOURCES, DALEY LAND SURVEYING, INC. HAS DETERMINED THE SURFACE LOCATION OF THE MIDDLEPARK 18-3-2L WELL TO BE 202' FSL, 1664' FWL, AS MEASURED AT NINETY (90) DEGREES FROM THE SECTION LINES OF SECTION 18, TOWNSHIP 4 NORTH, RANGE 62 WEST, AND THE BOTTOM HOLE LOCATION TO BE 470' FNL, 680' FEL, AS MEASURED AT NINETY (90) DEGREES FROM THE SECTION LINES OF SECTION 7, TOWNSHIP 4 NORTH, RANGE 62 WEST, OF THE 6TH PRINCIPAL MERIDIAN, WELD COUNTY, COLORADO.

I HEREBY STATE THAT THIS WELL LOCATION CERTIFICATE WAS PREPARED BY ME OR UNDER MY DIRECT SUPERVISION, THAT THE WORK WAS COMPLETED ON 3/3/2020 FOR AND ON BEHALF OF CONFLUENCE RESOURCES, AND THAT THIS MAP DOES NOT REPRESENT A BOUNDARY SURVEY, IT IS NOT A LAND SURVEY PLAT OR AN IMPROVEMENT SURVEY PLAT AND IT IS NOT TO BE RELIED UPON FOR THE ESTABLISHMENT OF FENCE, BUILDING OR OTHER FUTURE IMPROVEMENT LINES.

NOTES:

- BEARINGS FOR THIS MAP ARE ASSUMED AND BASED UPON GPS OBSERVATIONS MADE BETWEEN MONUMENTS LOCATED AT THE SOUTH QUARTER CORNER AND THE SOUTHWEST CORNER OF SECTION 18, T.4N., R.62W.
- HORIZONTAL DATUM IS NAD83.
- VERTICAL DATUM IS NAVD88 AND ORIGINATES FROM THE LOCAL C.O.R.S. NETWORK, UTILIZING THE GEOID12A MODEL.
- SEE LOCATION DRAWING FOR VISIBLE IMPROVEMENTS WITHIN 500' OF PROPOSED DISTURBED AREA.
- SURFACE USE: WELL PAD/RANGELAND.
- INST. OPERATOR: KYLE DALEY



FOR AND ON BEHALF OF
DALEY LAND SURVEYING, INC.,
Robert Daley, PLS 35597

NEAREST CULTURAL ITEMS:

BUILDING: 2678'± NE
BUILDING UNIT: 4257'± NW
HIGH OCC. BLD. UNIT: 5280'±
DES. OUTSIDE ACTIVITY AREA: 5280'±
PUBLIC ROAD: 999'± NE
ABOVE GROUND UTILITY: 935'± NE
RAILROAD: 5280'±
PROPERTY LINE: 202'± S
SCHOOL FACILITY: 5280'±
SCHOOL PROPERTY LINE: 5280'±
CHILDCARE FACILITY: 5280'±

NAD 83 LATITUDE AND LONGITUDE

SURFACE LOCATION:

LATITUDE: N40.30574°
LONGITUDE: W104.37058°
ELEV.: 4563'
PDOP.: 1.9
QTR/QTR: SE4/SW4

LANDING POINT:

LATITUDE: N40.30638°
LONGITUDE: W104.36025°

MID-POINT:

LATITUDE: N40.32003°
LONGITUDE: W104.36072°

BOTTOM HOLE:

LATITUDE: N40.33303°
LONGITUDE: W104.36119°

LEGEND

- FOUND MONUMENT AS DESCRIBED
- CALCULATED POSITION
- PROPOSED WELL
- EXISTING WELL
- BOTTOM HOLE

