

CONFLUENCE RESOURCES



Location:	COLORADO	Slot:	SLOT#21 Flaherty 13-6-1 (471°FSL & 1648°FWL,SEC.18)
Field:	WELD COUNTY (NAD83, TRUE NORTH)	Well:	Flaherty 13-6-1
Facility:	SEC.18-T04N-R62W	Wellbore:	Flaherty 13-6-1 PWB
Plot reference wellpath is Flaherty 13-6-1 PWP Rev-A.0		Grid System: NAD83 / Lambert Colorado SP, Northern Zone (501), US feet	
True vertical depths are referenced to Rig (23) (KB)		North Reference: True north	
Reference wellpath measured depths are referenced to Rig (23) (KB)		Scale: True distance	
Rig (23) (KB) to Mean Sea Level: 4586 feet		Coordinates are in feet referenced to Slot	
Mean Sea Level to Mud line (At Slot: SLOT#21 Flaherty 13-6-1 (471°FSL & 1648°FWL,SEC.18)): 0 feet		Depths are in feet	
Offset wellpath MDs are referenced to each path's default MD datum		Created by: painseir on 2021-12-02; Database: WellArchitectDB	

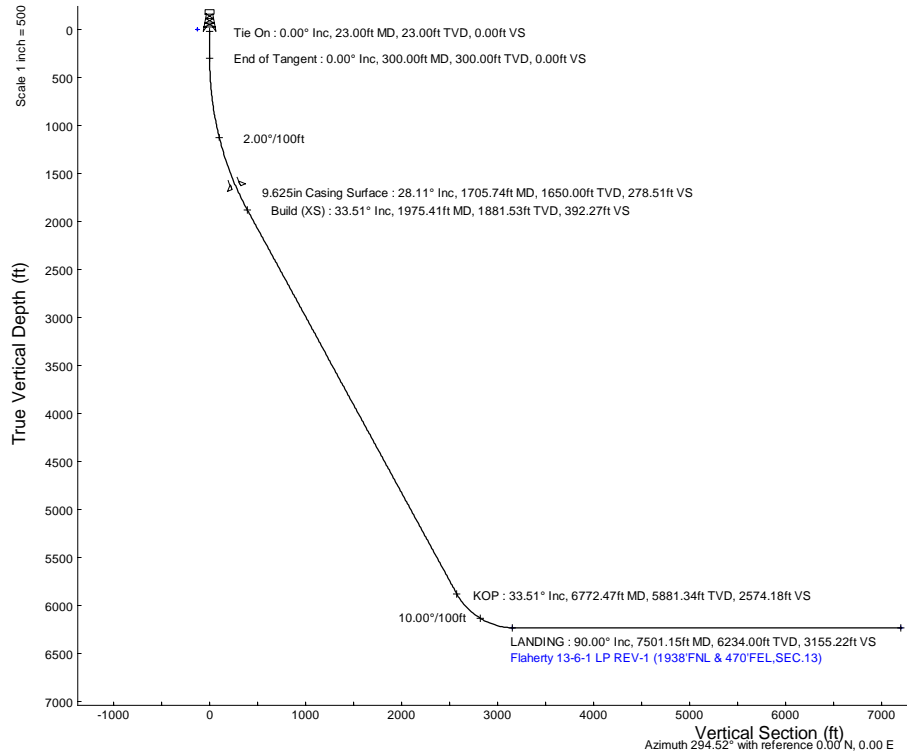
Location Information					
Facility Name			Grid East (US ft)	Grid North (US ft)	Latitude
SEC.18-T04N-R62W			3314967.040	1356246.051	40.3057900°
Slot			Local N (ft)	Local E (ft)	Longitude
SLOT#21 Flaherty 13-6-1 (471°FSL & 1648°FWL,SEC.18)			247.73	-2.79	1356493.713
Rig (23) (KB) to Mud line (At Slot: SLOT#21 Flaherty 13-6-1 (471°FSL & 1648°FWL,SEC.18))			4586ft		
Mean Sea Level to Mud line (At Slot: SLOT#21 Flaherty 13-6-1 (471°FSL & 1648°FWL,SEC.18))			0ft		
Rig (23) (KB) to Mean Sea Level			4586ft		

Hole and Casing Sections										
Name	Start MD (ft)	End MD (ft)	Interval (ft)	Start TVD (ft)	End TVD (ft)	Start Local N (ft)	Start Local E (ft)	End Local N (ft)	End Local E (ft)	Wellbore
9.625in Casing Surface	23.00	1705.74	1682.74	23.00	1650.00	0.00	0.00	289.88	-173.88	Flaherty 13-6-1 PWB

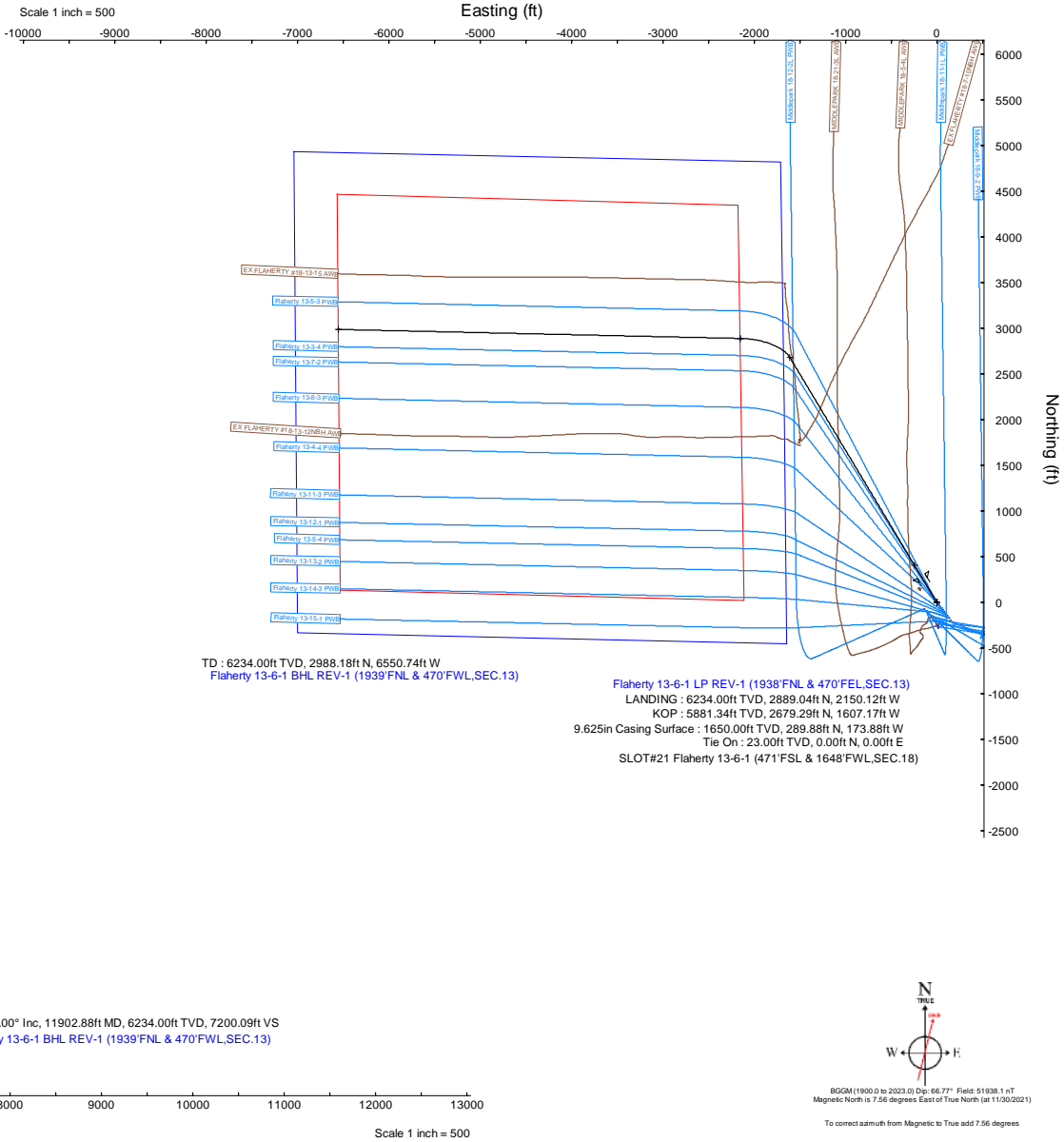
Survey Program					
Start MD (ft)	End MD (ft)	Tool		Model	Log Name/Comment
23.00	1705.34	BH NavTrak (2019)		BH NavTrak (2019) (Axial)	Flaherty 13-6-1 PWB
1705.34	11937.35	BH AutoTrak Curve/xpress (2019)		BH AutoTrak Curve/xpress (2019) (Short spacing)	Flaherty 13-6-1 PWB

Bottom Hole Location									
MD (ft)	Inc (°)	Az (°)	TVD (ft)	Local N (ft)	Local E (ft)	Grid East (US ft)	Grid North (US ft)	Latitude	Longitude
11902.88	90.000	271.291	6234.00	2988.18	-6550.74	3308373.13	1359398.09	40.3146700°	-104.3941400°

Targets									
Name	MD (ft)	TVD (ft)	Local N (ft)	Local E (ft)	Grid East (US ft)	Grid North (US ft)	Latitude	Longitude	
SEC.13-T04N-R63W	N/A	0.00	-265.94	19.52	3314984.00	1356228.05	40.3057400°	-104.3705800°	
SEC.13-T04N-R63W (SB 470°)	N/A	0.00	-265.94	19.52	3314984.00	1356228.05	40.3057400°	-104.3705800°	
Flaherty 13-6-1 BHL REV-1 (1939°FNL & 470°FWL,SEC.13)	11902.88	6234.00	2988.18	-6550.74	3308373.13	1359398.09	40.3146700°	-104.3941400°	
Flaherty 13-6-1 LP REV-1 (1938°FNL & 470°FWL,SEC.13)	7501.15	6234.00	2889.04	-2150.12	3312774.45	1359355.01	40.3144000°	-104.3783600°	



Well Profile Data								
Design Comment	MD (ft)	Inc (°)	Az (°)	TVD (ft)	Local N (ft)	Local E (ft)	DLS (°/100ft)	VS (ft)
Tie On	23.00	0.000	329.043	23.00	0.00	0.00	0.00	0.00
End of Tangent	300.00	0.000	329.043	300.00	0.00	0.00	0.00	0.00
Build (XS)	1975.41	33.508	329.043	1881.53	408.29	-244.91	2.00	392.27
KOP	6772.47	33.508	329.043	5881.34	2679.29	-1607.17	0.00	2574.18
LANDING	7501.15	90.000	271.291	6234.00	2889.04	-2150.12	10.00	3155.22
TD	11902.88	90.000	271.291	6234.00	2988.18	-6550.74	0.00	7200.09



Planned Wellpath Report

Flaherty 13-6-1 PWP Rev-A.0

Page 1 of 8

REFERENCE WELLPATH IDENTIFICATION

Operator	CONFLUENCE RESOURCES	Well	Flaherty 13-6-1
Field	WELD COUNTY (NAD83, TRUE NORTH)	API	0512347448
Facility	SEC.18-T04N-R62W	Wellbore	Flaherty 13-6-1 PWB
Slot	SLOT#21 Flaherty 13-6-1 (471'FSL & 1648'FWL,SEC.18)		

REPORT SETUP INFORMATION

Projection System	NAD83 / Lambert Colorado SP, Northern Zone (501), US feet	Software System	WellArchitect® 6.0
North Reference	True	User	Painsetr
Scale	0.999957	Report Generated	12/2/2021 at 3:51:31 PM
Convergence at slot	0.73° East	Database	WellArchitectDB

WELLPATH LOCATION

	Local coordinates		Grid coordinates		Geographic coordinates	
	North[ft]	East[ft]	Easting[US ft]	Northing[US ft]	Latitude	Longitude
Slot Location	247.73	-2.79	3314961.10	1356493.71	40.3064700°	-104.3706500°
Facility Reference Pt			3314967.04	1356246.05	40.3057900°	-104.3706400°
Field Reference Pt			3230456.90	1245096.09	40.0032400°	-104.6773400°

WELLPATH DATUM

Calculation method	Minimum curvature	Rig (23') (KB) to Facility Vertical Datum	4586.00ft
Horizontal Reference Pt	Slot	Rig (23') (KB) to Mean Sea Level	4586.00ft
Vertical Reference Pt	Rig (23') (KB)	Rig (23') (KB) to Mud Line at Slot (SLOT#21 Flaherty 13-6-1 (471'FSL & 1648'FWL,SEC.18))	4586.00ft
MD Reference Pt	Rig (23') (KB)	Section Origin	N 0.00, E 0.00 ft
Field Vertical Reference	Mean Sea Level	Section Azimuth	294.52°

Planned Wellpath Report

Flaherty 13-6-1 PWP Rev-A.0

Page 2 of 8

REFERENCE WELLPATH IDENTIFICATION

Operator	CONFLUENCE RESOURCES	Well	Flaherty 13-6-1
Field	WELD COUNTY (NAD83, TRUE NORTH)	API	0512347448
Facility	SEC.18-T04N-R62W	Wellbore	Flaherty 13-6-1 PWB
Slot	SLOT#21 Flaherty 13-6-1 (471'FSL & 1648'FWL,SEC.18)		

WELLPATH DATA (125 stations) † = interpolated, ‡ = extrapolated station

MD [ft]	Inclination [°]	Azimuth [°]	TVD [ft]	Vert Sect [ft]	North [ft]	East [ft]	Grid East [US ft]	Grid North [US ft]	Latitude	Longitude	DLS [°/100ft]	Comments
0.00†	0.000	329.043	0.00	0.00	0.00	0.00	3314961.10	1356493.71	40.3064700	-104.3706500	0.00	
23.00	0.000	329.043	23.00	0.00	0.00	0.00	3314961.10	1356493.71	40.3064700	-104.3706500	0.00	Tie On
123.00†	0.000	329.043	123.00	0.00	0.00	0.00	3314961.10	1356493.71	40.3064700	-104.3706500	0.00	
223.00†	0.000	329.043	223.00	0.00	0.00	0.00	3314961.10	1356493.71	40.3064700	-104.3706500	0.00	
300.00	0.000	329.043	300.00	0.00	0.00	0.00	3314961.10	1356493.71	40.3064700	-104.3706500	0.00	End of Tangent
323.00†	0.460	329.043	323.00	0.08	0.08	-0.05	3314961.05	1356493.79	40.3064702	-104.3706502	2.00	
423.00†	2.460	329.043	422.96	2.18	2.26	-1.36	3314959.71	1356495.96	40.3064762	-104.3706549	2.00	
523.00†	4.460	329.043	522.77	7.15	7.44	-4.46	3314956.54	1356501.09	40.3064904	-104.3706660	2.00	
623.00†	6.460	329.043	622.32	14.99	15.60	-9.36	3314951.54	1356509.19	40.3065128	-104.3706835	2.00	
723.00†	8.460	329.043	721.46	25.68	26.73	-16.04	3314944.72	1356520.24	40.3065434	-104.3707075	2.00	
823.00†	10.460	329.043	820.10	39.22	40.83	-24.49	3314936.09	1356534.22	40.3065821	-104.3707378	2.00	
923.00†	12.460	329.043	918.10	55.59	57.86	-34.71	3314925.65	1356551.13	40.3066288	-104.3707744	2.00	
1023.00†	14.460	329.043	1015.35	74.77	77.82	-46.68	3314913.43	1356570.93	40.3066836	-104.3708174	2.00	
1123.00†	16.460	329.043	1111.73	96.73	100.68	-60.39	3314899.43	1356593.61	40.3067464	-104.3708665	2.00	
1223.00†	18.460	329.043	1207.11	121.45	126.41	-75.83	3314883.67	1356619.14	40.3068170	-104.3709219	2.00	
1323.00†	20.460	329.043	1301.40	148.90	154.98	-92.96	3314866.17	1356647.49	40.3068954	-104.3709833	2.00	
1423.00†	22.460	329.043	1394.46	179.04	186.35	-111.78	3314846.96	1356678.62	40.3069815	-104.3710508	2.00	
1523.00†	24.460	329.043	1486.19	211.84	220.49	-132.26	3314826.05	1356712.49	40.3070752	-104.3711242	2.00	
1623.00†	26.460	329.043	1576.47	247.25	257.35	-154.37	3314803.47	1356749.06	40.3071764	-104.3712035	2.00	
1723.00†	28.460	329.043	1665.20	285.25	296.89	-178.09	3314779.25	1356788.30	40.3072849	-104.3712885	2.00	
1823.00†	30.460	329.043	1752.27	325.76	339.07	-203.39	3314753.42	1356830.15	40.3074007	-104.3713792	2.00	
1923.00†	32.460	329.043	1837.56	368.76	383.82	-230.23	3314726.00	1356874.55	40.3075236	-104.3714755	2.00	
1975.41	33.508	329.043	1881.53	392.27	408.29	-244.91	3314711.02	1356898.83	40.3075907	-104.3715281	2.00	Build (XS)
2023.00†	33.508	329.043	1921.21	413.92	430.82	-258.43	3314697.22	1356921.18	40.3076526	-104.3715766	0.00	
2123.00†	33.508	329.043	2004.59	459.40	478.16	-286.82	3314668.22	1356968.16	40.3077825	-104.3716784	0.00	
2223.00†	33.508	329.043	2087.97	504.88	525.50	-315.22	3314639.22	1357015.13	40.3079125	-104.3717802	0.00	
2323.00†	33.508	329.043	2171.35	550.37	572.84	-343.62	3314610.23	1357062.11	40.3080424	-104.3718820	0.00	
2423.00†	33.508	329.043	2254.73	595.85	620.18	-372.02	3314581.23	1357109.08	40.3081724	-104.3719839	0.00	
2523.00†	33.508	329.043	2338.11	641.34	667.52	-400.41	3314552.23	1357156.05	40.3083023	-104.3720857	0.00	
2623.00†	33.508	329.043	2421.49	686.82	714.87	-428.81	3314523.23	1357203.03	40.3084323	-104.3721875	0.00	

Planned Wellpath Report

Flaherty 13-6-1 PWP Rev-A.0

Page 3 of 8

REFERENCE WELLPATH IDENTIFICATION

Operator	CONFLUENCE RESOURCES	Well	Flaherty 13-6-1
Field	WELD COUNTY (NAD83, TRUE NORTH)	API	0512347448
Facility	SEC.18-T04N-R62W	Wellbore	Flaherty 13-6-1 PWB
Slot	SLOT#21 Flaherty 13-6-1 (471'FSL & 1648'FWL,SEC.18)		

WELLPATH DATA (125 stations) † = interpolated, ‡ = extrapolated station

MD [ft]	Inclination [°]	Azimuth [°]	TVD [ft]	Vert Sect [ft]	North [ft]	East [ft]	Grid East [US ft]	Grid North [US ft]	Latitude	Longitude	DLS [°/100ft]	Comments
2723.00†	33.508	329.043	2504.87	732.31	762.21	-457.21	3314494.24	1357250.00	40.3085622	-104.3722893	0.00	
2823.00†	33.508	329.043	2588.25	777.79	809.55	-485.61	3314465.24	1357296.98	40.3086922	-104.3723912	0.00	
2923.00†	33.508	329.043	2671.63	823.28	856.89	-514.01	3314436.24	1357343.95	40.3088221	-104.3724930	0.00	
3023.00†	33.508	329.043	2755.01	868.76	904.23	-542.40	3314407.24	1357390.92	40.3089520	-104.3725948	0.00	
3123.00†	33.508	329.043	2838.39	914.24	951.57	-570.80	3314378.25	1357437.90	40.3090820	-104.3726966	0.00	
3223.00†	33.508	329.043	2921.77	959.73	998.92	-599.20	3314349.25	1357484.87	40.3092119	-104.3727985	0.00	
3323.00†	33.508	329.043	3005.15	1005.21	1046.26	-627.60	3314320.25	1357531.85	40.3093419	-104.3729003	0.00	
3423.00†	33.508	329.043	3088.54	1050.70	1093.60	-656.00	3314291.26	1357578.82	40.3094718	-104.3730021	0.00	
3523.00†	33.508	329.043	3171.92	1096.18	1140.94	-684.39	3314262.26	1357625.79	40.3096018	-104.3731040	0.00	
3623.00†	33.508	329.043	3255.30	1141.67	1188.28	-712.79	3314233.26	1357672.77	40.3097317	-104.3732058	0.00	
3723.00†	33.508	329.043	3338.68	1187.15	1235.62	-741.19	3314204.26	1357719.74	40.3098617	-104.3733076	0.00	
3823.00†	33.508	329.043	3422.06	1232.64	1282.96	-769.59	3314175.27	1357766.72	40.3099916	-104.3734094	0.00	
3923.00†	33.508	329.043	3505.44	1278.12	1330.31	-797.99	3314146.27	1357813.69	40.3101216	-104.3735113	0.00	
4023.00†	33.508	329.043	3588.82	1323.60	1377.65	-826.38	3314117.27	1357860.66	40.3102515	-104.3736131	0.00	
4123.00†	33.508	329.043	3672.20	1369.09	1424.99	-854.78	3314088.28	1357907.64	40.3103815	-104.3737149	0.00	
4223.00†	33.508	329.043	3755.58	1414.57	1472.33	-883.18	3314059.28	1357954.61	40.3105114	-104.3738168	0.00	
4323.00†	33.508	329.043	3838.96	1460.06	1519.67	-911.58	3314030.28	1358001.58	40.3106414	-104.3739186	0.00	
4423.00†	33.508	329.043	3922.34	1505.54	1567.01	-939.97	3314001.28	1358048.56	40.3107713	-104.3740204	0.00	
4523.00†	33.508	329.043	4005.72	1551.03	1614.36	-968.37	3313972.29	1358095.53	40.3109013	-104.3741223	0.00	
4623.00†	33.508	329.043	4089.10	1596.51	1661.70	-996.77	3313943.29	1358142.51	40.3110312	-104.3742241	0.00	
4723.00†	33.508	329.043	4172.48	1642.00	1709.04	-1025.17	3313914.29	1358189.48	40.3111612	-104.3743259	0.00	
4823.00†	33.508	329.043	4255.86	1687.48	1756.38	-1053.57	3313885.30	1358236.45	40.3112911	-104.3744277	0.00	
4923.00†	33.508	329.043	4339.25	1732.96	1803.72	-1081.96	3313856.30	1358283.43	40.3114210	-104.3745296	0.00	
5023.00†	33.508	329.043	4422.63	1778.45	1851.06	-1110.36	3313827.30	1358330.40	40.3115510	-104.3746314	0.00	
5123.00†	33.508	329.043	4506.01	1823.93	1898.40	-1138.76	3313798.30	1358377.38	40.3116809	-104.3747332	0.00	
5223.00†	33.508	329.043	4589.39	1869.42	1945.75	-1167.16	3313769.31	1358424.35	40.3118109	-104.3748351	0.00	
5323.00†	33.508	329.043	4672.77	1914.90	1993.09	-1195.56	3313740.31	1358471.32	40.3119408	-104.3749369	0.00	
5423.00†	33.508	329.043	4756.15	1960.39	2040.43	-1223.95	3313711.31	1358518.30	40.3120708	-104.3750388	0.00	
5523.00†	33.508	329.043	4839.53	2005.87	2087.77	-1252.35	3313682.32	1358565.27	40.3122007	-104.3751406	0.00	
5623.00†	33.508	329.043	4922.91	2051.35	2135.11	-1280.75	3313653.32	1358612.25	40.3123307	-104.3752424	0.00	

Planned Wellpath Report

Flaherty 13-6-1 PWP Rev-A.0

Page 4 of 8

REFERENCE WELLPATH IDENTIFICATION

Operator	CONFLUENCE RESOURCES	Well	Flaherty 13-6-1
Field	WELD COUNTY (NAD83, TRUE NORTH)	API	0512347448
Facility	SEC.18-T04N-R62W	Wellbore	Flaherty 13-6-1 PWB
Slot	SLOT#21 Flaherty 13-6-1 (471'FSL & 1648'FWL,SEC.18)		

WELLPATH DATA (125 stations) † = interpolated, ‡ = extrapolated station

MD [ft]	Inclination [°]	Azimuth [°]	TVD [ft]	Vert Sect [ft]	North [ft]	East [ft]	Grid East [US ft]	Grid North [US ft]	Latitude	Longitude	DLS [°/100ft]	Comments
5723.00†	33.508	329.043	5006.29	2096.84	2182.45	-1309.15	3313624.32	1358659.22	40.3124606	-104.3753443	0.00	
5823.00†	33.508	329.043	5089.67	2142.32	2229.80	-1337.54	3313595.32	1358706.19	40.3125906	-104.3754461	0.00	
5923.00†	33.508	329.043	5173.05	2187.81	2277.14	-1365.94	3313566.33	1358753.17	40.3127205	-104.3755479	0.00	
6023.00†	33.508	329.043	5256.43	2233.29	2324.48	-1394.34	3313537.33	1358800.14	40.3128505	-104.3756498	0.00	
6123.00†	33.508	329.043	5339.81	2278.78	2371.82	-1422.74	3313508.33	1358847.12	40.3129804	-104.3757516	0.00	
6223.00†	33.508	329.043	5423.19	2324.26	2419.16	-1451.14	3313479.33	1358894.09	40.3131103	-104.3758534	0.00	
6323.00†	33.508	329.043	5506.57	2369.75	2466.50	-1479.53	3313450.34	1358941.06	40.3132403	-104.3759553	0.00	
6423.00†	33.508	329.043	5589.96	2415.23	2513.84	-1507.93	3313421.34	1358988.04	40.3133702	-104.3760571	0.00	
6523.00†	33.508	329.043	5673.34	2460.71	2561.19	-1536.33	3313392.34	1359035.01	40.3135002	-104.3761590	0.00	
6623.00†	33.508	329.043	5756.72	2506.20	2608.53	-1564.73	3313363.35	1359081.99	40.3136301	-104.3762608	0.00	
6723.00†	33.508	329.043	5840.10	2551.68	2655.87	-1593.13	3313334.35	1359128.96	40.3137601	-104.3763626	0.00	
6772.47	33.508	329.043	5881.34	2574.18	2679.29	-1607.17	3313320.00	1359152.20	40.3138243	-104.3764130	0.00	KOP
6823.00†	36.106	321.441	5922.85	2598.97	2702.91	-1623.64	3313303.24	1359175.60	40.3138892	-104.3764721	10.00	
6923.00†	42.401	309.113	6000.37	2658.02	2747.33	-1668.28	3313258.04	1359219.45	40.3140111	-104.3766322	10.00	
7023.00†	49.720	299.620	6069.79	2728.82	2787.55	-1727.75	3313198.06	1359258.91	40.3141215	-104.3768454	10.00	
7123.00†	57.659	292.056	6129.02	2809.22	2822.36	-1800.25	3313125.13	1359292.79	40.3142170	-104.3771054	10.00	
7223.00†	65.975	285.745	6176.24	2896.78	2850.69	-1883.57	3313041.46	1359320.05	40.3142948	-104.3774042	10.00	
7323.00†	74.518	280.213	6210.03	2988.84	2871.68	-1975.18	3312949.60	1359339.87	40.3143524	-104.3777327	10.00	
7423.00†	83.186	275.127	6229.36	3082.60	2884.69	-2072.29	3312852.33	1359351.65	40.3143881	-104.3780809	10.00	
7501.15	90.000	271.291	6234.00†	3155.22	2889.04	-2150.12	3312774.45	1359355.01	40.3144000	-104.3783600	10.00	LANDING
7523.00†	90.000	271.291	6234.00	3175.30	2889.54	-2171.97	3312752.60	1359355.23	40.3144013	-104.3784383	0.00	
7623.00†	90.000	271.291	6234.00	3267.19	2891.79	-2271.94	3312652.61	1359356.20	40.3144075	-104.3787968	0.00	
7723.00†	90.000	271.291	6234.00	3359.08	2894.04	-2371.92	3312552.62	1359357.18	40.3144137	-104.3791553	0.00	
7823.00†	90.000	271.291	6234.00	3450.98	2896.29	-2471.89	3312452.63	1359358.16	40.3144198	-104.3795138	0.00	
7923.00†	90.000	271.291	6234.00	3542.87	2898.54	-2571.87	3312352.64	1359359.14	40.3144260	-104.3798723	0.00	
8023.00†	90.000	271.291	6234.00	3634.76	2900.80	-2671.84	3312252.65	1359360.12	40.3144321	-104.3802308	0.00	
8123.00†	90.000	271.291	6234.00	3726.65	2903.05	-2771.82	3312152.66	1359361.10	40.3144383	-104.3805893	0.00	
8223.00†	90.000	271.291	6234.00	3818.55	2905.30	-2871.79	3312052.67	1359362.08	40.3144444	-104.3809478	0.00	
8323.00†	90.000	271.291	6234.00	3910.44	2907.55	-2971.76	3311952.68	1359363.06	40.3144506	-104.3813063	0.00	
8423.00†	90.000	271.291	6234.00	4002.33	2909.81	-3071.74	3311852.69	1359364.03	40.3144567	-104.3816648	0.00	

Planned Wellpath Report

Flaherty 13-6-1 PWP Rev-A.0

Page 5 of 8

REFERENCE WELLPATH IDENTIFICATION

Operator	CONFLUENCE RESOURCES	Well	Flaherty 13-6-1
Field	WELD COUNTY (NAD83, TRUE NORTH)	API	0512347448
Facility	SEC.18-T04N-R62W	Wellbore	Flaherty 13-6-1 PWB
Slot	SLOT#21 Flaherty 13-6-1 (471'FSL & 1648'FWL,SEC.18)		

WELLPATH DATA (125 stations) † = interpolated, ‡ = extrapolated station

MD [ft]	Inclination [°]	Azimuth [°]	TVD [ft]	Vert Sect [ft]	North [ft]	East [ft]	Grid East [US ft]	Grid North [US ft]	Latitude	Longitude	DLS [°/100ft]	Comments
8523.00†	90.000	271.291	6234.00	4094.23	2912.06	-3171.71	3311752.70	1359365.01	40.3144629	-104.3820233	0.00	
8623.00†	90.000	271.291	6234.00	4186.12	2914.31	-3271.69	3311652.71	1359365.99	40.3144690	-104.3823818	0.00	
8723.00†	90.000	271.291	6234.00	4278.01	2916.56	-3371.66	3311552.72	1359366.97	40.3144752	-104.3827403	0.00	
8823.00†	90.000	271.291	6234.00	4369.90	2918.81	-3471.64	3311452.72	1359367.95	40.3144813	-104.3830988	0.00	
8923.00†	90.000	271.291	6234.00	4461.80	2921.07	-3571.61	3311352.73	1359368.93	40.3144875	-104.3834573	0.00	
9023.00†	90.000	271.291	6234.00	4553.69	2923.32	-3671.59	3311252.74	1359369.91	40.3144936	-104.3838158	0.00	
9123.00†	90.000	271.291	6234.00	4645.58	2925.57	-3771.56	3311152.75	1359370.89	40.3144997	-104.3841742	0.00	
9223.00†	90.000	271.291	6234.00	4737.48	2927.82	-3871.54	3311052.76	1359371.86	40.3145059	-104.3845327	0.00	
9323.00†	90.000	271.291	6234.00	4829.37	2930.08	-3971.51	3310952.77	1359372.84	40.3145120	-104.3848912	0.00	
9423.00†	90.000	271.291	6234.00	4921.26	2932.33	-4071.49	3310852.78	1359373.82	40.3145181	-104.3852497	0.00	
9523.00†	90.000	271.291	6234.00	5013.15	2934.58	-4171.46	3310752.79	1359374.80	40.3145243	-104.3856082	0.00	
9623.00†	90.000	271.291	6234.00	5105.05	2936.83	-4271.43	3310652.80	1359375.78	40.3145304	-104.3859667	0.00	
9723.00†	90.000	271.291	6234.00	5196.94	2939.08	-4371.41	3310552.81	1359376.76	40.3145366	-104.3863252	0.00	
9823.00†	90.000	271.291	6234.00	5288.83	2941.34	-4471.38	3310452.82	1359377.74	40.3145427	-104.3866837	0.00	
9923.00†	90.000	271.291	6234.00	5380.73	2943.59	-4571.36	3310352.83	1359378.72	40.3145488	-104.3870422	0.00	
10023.00†	90.000	271.291	6234.00	5472.62	2945.84	-4671.33	3310252.84	1359379.69	40.3145550	-104.3874007	0.00	
10123.00†	90.000	271.291	6234.00	5564.51	2948.09	-4771.31	3310152.84	1359380.67	40.3145611	-104.3877592	0.00	
10223.00†	90.000	271.291	6234.00	5656.41	2950.35	-4871.28	3310052.85	1359381.65	40.3145672	-104.3881177	0.00	
10323.00†	90.000	271.291	6234.00	5748.30	2952.60	-4971.26	3309952.86	1359382.63	40.3145733	-104.3884762	0.00	
10423.00†	90.000	271.291	6234.00	5840.19	2954.85	-5071.23	3309852.87	1359383.61	40.3145795	-104.3888347	0.00	
10523.00†	90.000	271.291	6234.00	5932.08	2957.10	-5171.21	3309752.88	1359384.59	40.3145856	-104.3891932	0.00	
10623.00†	90.000	271.291	6234.00	6023.98	2959.35	-5271.18	3309652.89	1359385.57	40.3145917	-104.3895517	0.00	
10723.00†	90.000	271.291	6234.00	6115.87	2961.61	-5371.16	3309552.90	1359386.55	40.3145978	-104.3899102	0.00	
10823.00†	90.000	271.291	6234.00	6207.76	2963.86	-5471.13	3309452.91	1359387.52	40.3146040	-104.3902687	0.00	
10923.00†	90.000	271.291	6234.00	6299.66	2966.11	-5571.11	3309352.92	1359388.50	40.3146101	-104.3906272	0.00	
11023.00†	90.000	271.291	6234.00	6391.55	2968.36	-5671.08	3309252.93	1359389.48	40.3146162	-104.3909857	0.00	
11123.00†	90.000	271.291	6234.00	6483.44	2970.62	-5771.05	3309152.94	1359390.46	40.3146223	-104.3913442	0.00	
11223.00†	90.000	271.291	6234.00	6575.33	2972.87	-5871.03	3309052.95	1359391.44	40.3146284	-104.3917027	0.00	
11323.00†	90.000	271.291	6234.00	6667.23	2975.12	-5971.00	3308952.96	1359392.42	40.3146346	-104.3920612	0.00	
11423.00†	90.000	271.291	6234.00	6759.12	2977.37	-6070.98	3308852.97	1359393.40	40.3146407	-104.3924197	0.00	

Planned Wellpath Report

Flaherty 13-6-1 PWP Rev-A.0

Page 6 of 8

REFERENCE WELLPATH IDENTIFICATION

Operator	CONFLUENCE RESOURCES	Well	Flaherty 13-6-1
Field	WELD COUNTY (NAD83, TRUE NORTH)	API	0512347448
Facility	SEC.18-T04N-R62W	Wellbore	Flaherty 13-6-1 PWB
Slot	SLOT#21 Flaherty 13-6-1 (471'FSL & 1648'FWL,SEC.18)		

WELLPATH DATA (125 stations) † = interpolated, ‡ = extrapolated station

MD [ft]	Inclination [°]	Azimuth [°]	TVD [ft]	Vert Sect [ft]	North [ft]	East [ft]	Grid East [US ft]	Grid North [US ft]	Latitude	Longitude	DLS [°/100ft]	Comments
11523.00†	90.000	271.291	6234.00	6851.01	2979.63	-6170.95	3308752.97	1359394.38	40.3146468	-104.3927781	0.00	
11623.00†	90.000	271.291	6234.00	6942.91	2981.88	-6270.93	3308652.98	1359395.36	40.3146529	-104.3931366	0.00	
11723.00†	90.000	271.291	6234.00	7034.80	2984.13	-6370.90	3308552.99	1359396.33	40.3146590	-104.3934951	0.00	
11823.00†	90.000	271.291	6234.00	7126.69	2986.38	-6470.88	3308453.00	1359397.31	40.3146651	-104.3938536	0.00	
11902.88	90.000	271.291	6234.00 ²	7200.09	2988.18	-6550.74	3308373.13	1359398.09	40.3146700	-104.3941400	0.00	TD

HOLE & CASING SECTIONS - Ref Wellbore: Flaherty 13-6-1 PWB Ref Wellpath: Flaherty 13-6-1 PWP Rev-A.0

String/Diameter	Start MD [ft]	End MD [ft]	Interval [ft]	Start TVD [ft]	End TVD [ft]	Start N/S [ft]	Start E/W [ft]	End N/S [ft]	End E/W [ft]
9.625in Casing Surface	23.00	1705.74	1682.74	23.00	1650.00	0.00	0.00	289.88	-173.88

REFERENCE WELLPATH IDENTIFICATION

Operator	CONFLUENCE RESOURCES	Well	Flaherty 13-6-1
Field	WELD COUNTY (NAD83, TRUE NORTH)	API	0512347448
Facility	SEC.18-T04N-R62W	Wellbore	Flaherty 13-6-1 PWB
Slot	SLOT#21 Flaherty 13-6-1 (471'FSL & 1648'FWL,SEC.18)		

TARGETS

Name	MD [ft]	TVD [ft]	North [ft]	East [ft]	Grid East [US ft]	Grid North [US ft]	Latitude	Longitude	Shape
SEC.13-T04N-R63W	N/A	0.00	-265.94	19.52	3314984.00	1356228.05	40.3057400	-104.3705800	polygon
2D Polygon: dimensions not calculated									
SEC.13-T04N-R63W (SB 470')	N/A	0.00	-265.94	19.52	3314984.00	1356228.05	40.3057400	-104.3705800	polygon
2D Polygon: dimensions not calculated									
2) Flaherty 13-6-1 BHL REV-1 (1939'FNL & 470'FWL,SEC.13)	11902.88	6234.00	2988.18	-6550.74	3308373.13	1359398.09	40.3146700	-104.3941400	point
1) Flaherty 13-6-1 LP REV-1 (1938'FNL & 470'FEL,SEC.13)	7501.15	6234.00	2889.04	-2150.12	3312774.45	1359355.01	40.3144000	-104.3783600	point

SURVEY PROGRAM - Ref Wellbore: Flaherty 13-6-1 PWB Ref Wellpath: Flaherty 13-6-1 PWP Rev-A.0

Start MD [ft]	End MD [ft]	Positional Uncertainty Model	Log Name/Comment	Wellbore
23.00	1705.34	BH NaviTrak (2019) (Axial)		Flaherty 13-6-1 PWB
1705.34	11937.35	BH AutoTrak Curve/eXpress (2019) (Short spacing)		Flaherty 13-6-1 PWB

Planned Wellpath Report

Flaherty 13-6-1 PWP Rev-A.0

Page 8 of 8

REFERENCE WELLPATH IDENTIFICATION

Operator	CONFLUENCE RESOURCES	Well	Flaherty 13-6-1
Field	WELD COUNTY (NAD83, TRUE NORTH)	API	0512347448
Facility	SEC.18-T04N-R62W	Wellbore	Flaherty 13-6-1 PWB
Slot	SLOT#21 Flaherty 13-6-1 (471'FSL & 1648'FWL,SEC.18)		

DESIGN COMMENTS

MD [ft]	Inclination [°]	Azimuth [°]	TVD [ft]	Comment
23.00	0.000	329.043	23.00	Tie On
300.00	0.000	329.043	300.00	End of Tangent
1975.41	33.508	329.043	1881.53	Build (XS)
6772.47	33.508	329.043	5881.34	KOP
7501.15	90.000	271.291	6234.00	LANDING
11902.88	90.000	271.291	6234.00	TD