

CONFLUENCE RESOURCES



Location:	COLORADO	Slot:	SLOT#22 Flaherty 13-5-3 (491°FSL & 1633°FWL,SEC.18)
Field:	WELD COUNTY (NAD83, TRUE NORTH)	Well:	Flaherty 13-5-3
Facility:	SEC.18-T04N-R62W	Wellbore:	Flaherty 13-5-3 PWB
Plot reference wellpath is Flaherty 13-5-3 PWP Rev-A.0		Grid System: NAD83 / Lambert Colorado SP, Northern Zone (501), US feet	
True vertical depths are referenced to Rig (23) (KB)		North Reference: True north	
Reference wellpath measured depths are referenced to Rig (23) (KB)		Scale: True distance	
Rig (23) (KB) to Mean Sea Level: 4586 feet		Coordinates are in feet referenced to Slot	
Mean Sea Level to Mud line (At Slot: SLOT#22 Flaherty 13-5-3 (491°FSL & 1633°FWL,SEC.18)): 0 feet		Depths are in feet	
Offset wellpath MDs are referenced to each path's default MD datum		Created by: painseir on 2021-12-02; Database: WellArchitectDB	

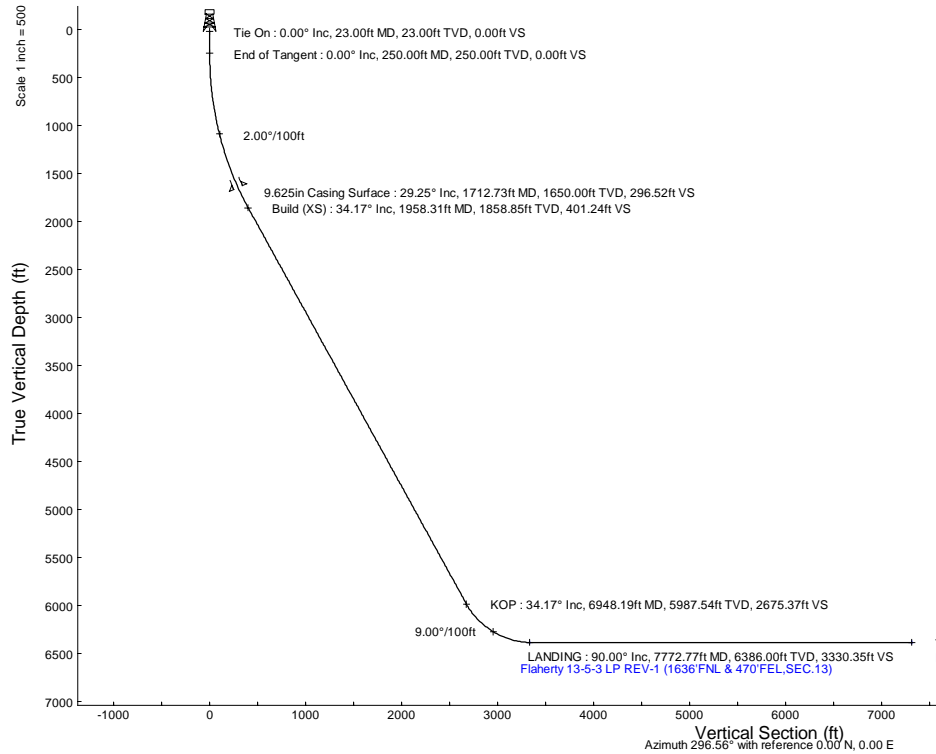
Location Information					
Facility Name			Grid East (US ft)	Grid North (US ft)	Latitude
SEC.18-T04N-R62W			3314967.040	1356246.051	40.3057900°
Slot			Local N (ft)	Local E (ft)	Latitude
SLOT#22 Flaherty 13-5-3 (491°FSL & 1633°FWL,SEC.18)			269.59	-16.73	40.3065300°
Rig (23) (KB) to Mud line (At Slot: SLOT#22 Flaherty 13-5-3 (491°FSL & 1633°FWL,SEC.18))			4586ft		
Mean Sea Level to Mud line (At Slot: SLOT#22 Flaherty 13-5-3 (491°FSL & 1633°FWL,SEC.18))			0ft		
Rig (23) (KB) to Mean Sea Level			4586ft		

Hole and Casing Sections										
Name	Start MD (ft)	End MD (ft)	Interval (ft)	Start TVD (ft)	End TVD (ft)	Start Local N (ft)	Start Local E (ft)	End Local N (ft)	End Local E (ft)	Wellbore
9.625in Casing Surface	23.00	1712.73	1689.73	23.00	1650.00	0.00	0.00	323.55	-169.78	Flaherty 13-5-3 PWB

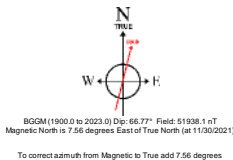
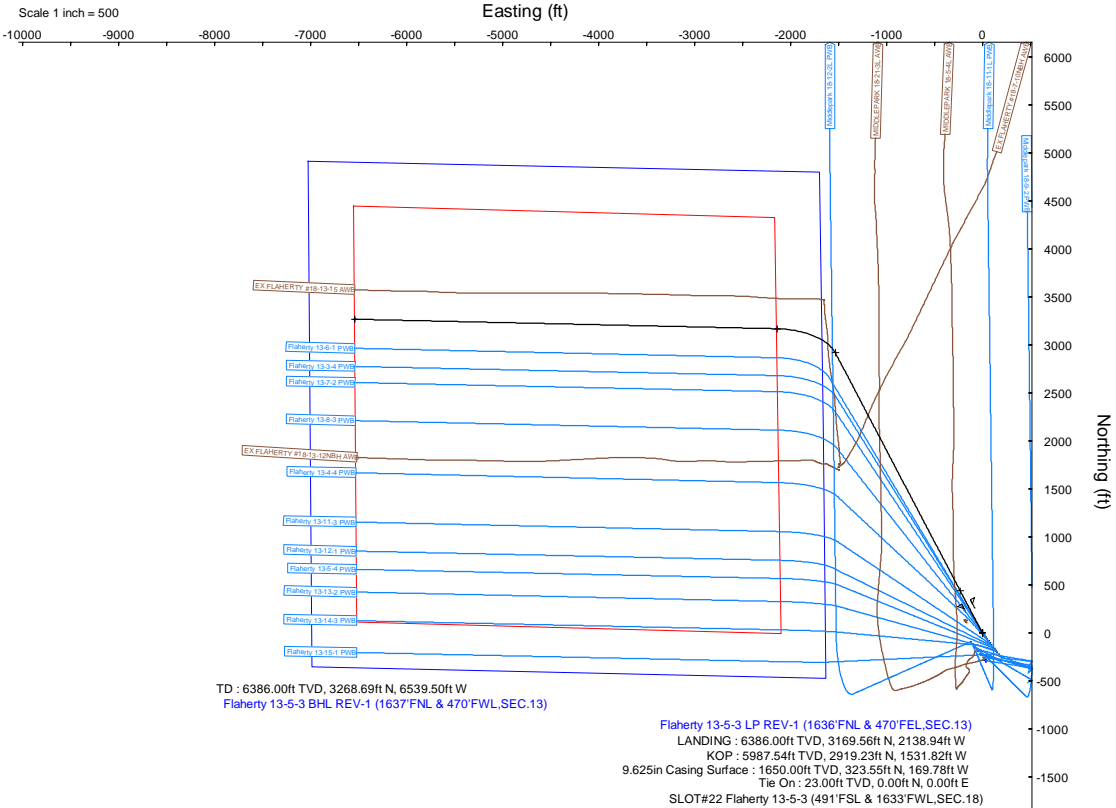
Survey Program					
Start MD (ft)	End MD (ft)	Tool		Model	Log Name/Comment
23.00	1712.73	BH NavTrak (2019)		BH NavTrak (2019) (Axial)	Flaherty 13-5-3 PWB
1712.73	12219.50	BH AutoTrak Curve/xpress (2019)		BH AutoTrak Curve/xpress (2019) (Short spacing)	Flaherty 13-5-3 PWB

Bottom Hole Location									
MD (ft)	Inc (°)	Az (°)	TVD (ft)	Local N (ft)	Local E (ft)	Grid East (US ft)	Grid North (US ft)	Latitude	Longitude
12174.44	90.000	271.291	6386.00	3268.69	-6539.50	3308366.57	1359700.40	40.3155000°	-104.3941500°

Targets									
Name	MD (ft)	TVD (ft)	Local N (ft)	Local E (ft)	Grid East (US ft)	Grid North (US ft)	Latitude	Longitude	
SEC.13-T04N-R63W	N/A	0.00	-287.80	33.47	3314984.00	1356228.05	40.3057400°	-104.3705800°	
SEC.13-T04N-R63W (SB 470)	N/A	0.00	-287.80	33.47	3314984.00	1356228.05	40.3057400°	-104.3705800°	
Flaherty 13-5-3 BHL REV-1 (1637°FNL & 470°FWL,SEC.13)	12174.44	6386.00	3268.69	-6539.50	3308366.57	1359700.40	40.3155000°	-104.3941500°	
Flaherty 13-5-3 LP REV-1 (1636°FNL & 470°FWL,SEC.13)	7772.77	6386.00	3169.56	-2138.94	3312767.84	1359657.31	40.3152300°	-104.3783700°	



Well Profile Data								
Design Comment	MD (ft)	Inc (°)	Az (°)	TVD (ft)	Local N (ft)	Local E (ft)	DLS (°/100ft)	VS (ft)
Tie On	23.00	0.000	332.312	23.00	0.00	0.00	0.00	0.00
End of Tangent	250.00	0.000	332.312	250.00	0.00	0.00	0.00	0.00
Build (XS)	1958.31	34.166	332.312	1858.85	437.81	-229.74	2.00	401.24
KOP	6948.19	34.166	332.312	5987.54	2919.23	-1531.82	0.00	2675.37
LANDING	7772.77	90.000	271.291	6386.00	3169.56	-2138.94	9.00	3330.35
TD	12174.44	90.000	271.291	6386.00	3268.69	-6539.50	0.00	7310.91



Planned Wellpath Report

Flaherty 13-5-3 PWP Rev-A.0

Page 1 of 8

REFERENCE WELLPATH IDENTIFICATION

Operator	CONFLUENCE RESOURCES	Well	Flaherty 13-5-3
Field	WELD COUNTY (NAD83, TRUE NORTH)	API	0512347449
Facility	SEC.18-T04N-R62W	Wellbore	Flaherty 13-5-3 PWB
Slot	SLOT#22 Flaherty 13-5-3 (491'FSL & 1633'FWL,SEC.18)		

REPORT SETUP INFORMATION

Projection System	NAD83 / Lambert Colorado SP, Northern Zone (501), US feet	Software System	WellArchitect® 6.0
North Reference	True	User	Painsetr
Scale	0.999957	Report Generated	12/2/2021 at 3:55:49 PM
Convergence at slot	0.73° East	Database	WellArchitectDB

WELLPATH LOCATION

	Local coordinates		Grid coordinates		Geographic coordinates	
	North[ft]	East[ft]	Easting[US ft]	Northing[US ft]	Latitude	Longitude
Slot Location	269.59	-16.73	3314946.87	1356515.39	40.3065300°	-104.3707000°
Facility Reference Pt			3314967.04	1356246.05	40.3057900°	-104.3706400°
Field Reference Pt			3230456.90	1245096.09	40.0032400°	-104.6773400°

WELLPATH DATUM

Calculation method	Minimum curvature	Rig (23') (KB) to Facility Vertical Datum	4586.00ft
Horizontal Reference Pt	Slot	Rig (23') (KB) to Mean Sea Level	4586.00ft
Vertical Reference Pt	Rig (23') (KB)	Rig (23') (KB) to Mud Line at Slot (SLOT#22 Flaherty 13-5-3 (491'FSL & 1633'FWL,SEC.18))	4586.00ft
MD Reference Pt	Rig (23') (KB)	Section Origin	N 0.00, E 0.00 ft
Field Vertical Reference	Mean Sea Level	Section Azimuth	296.56°

Planned Wellpath Report

Flaherty 13-5-3 PWP Rev-A.0

Page 2 of 8

REFERENCE WELLPATH IDENTIFICATION

Operator	CONFLUENCE RESOURCES	Well	Flaherty 13-5-3
Field	WELD COUNTY (NAD83, TRUE NORTH)	API	0512347449
Facility	SEC.18-T04N-R62W	Wellbore	Flaherty 13-5-3 PWB
Slot	SLOT#22 Flaherty 13-5-3 (491'FSL & 1633'FWL,SEC.18)		

WELLPATH DATA (128 stations) † = interpolated, ‡ = extrapolated station

MD [ft]	Inclination [°]	Azimuth [°]	TVD [ft]	Vert Sect [ft]	North [ft]	East [ft]	Grid East [US ft]	Grid North [US ft]	Latitude	Longitude	DLS [°/100ft]	Comments
0.00†	0.000	332.312	0.00	0.00	0.00	0.00	3314946.87	1356515.39	40.3065300	-104.3707000	0.00	
23.00	0.000	332.312	23.00	0.00	0.00	0.00	3314946.87	1356515.39	40.3065300	-104.3707000	0.00	Tie On
123.00†	0.000	332.312	123.00	0.00	0.00	0.00	3314946.87	1356515.39	40.3065300	-104.3707000	0.00	
223.00†	0.000	332.312	223.00	0.00	0.00	0.00	3314946.87	1356515.39	40.3065300	-104.3707000	0.00	
250.00	0.000	332.312	250.00	0.00	0.00	0.00	3314946.87	1356515.39	40.3065300	-104.3707000	0.00	End of Tangent
323.00†	1.460	332.312	322.99	0.75	0.82	-0.43	3314946.43	1356516.21	40.3065323	-104.3707015	2.00	
423.00†	3.460	332.312	422.89	4.24	4.62	-2.43	3314944.39	1356519.98	40.3065427	-104.3707087	2.00	
523.00†	5.460	332.312	522.59	10.55	11.51	-6.04	3314940.69	1356526.82	40.3065616	-104.3707217	2.00	
623.00†	7.460	332.312	621.95	19.68	21.47	-11.27	3314935.34	1356536.72	40.3065889	-104.3707404	2.00	
723.00†	9.460	332.312	720.85	31.62	34.50	-18.10	3314928.33	1356549.65	40.3066247	-104.3707649	2.00	
823.00†	11.460	332.312	819.19	46.35	50.57	-26.54	3314919.70	1356565.62	40.3066688	-104.3707951	2.00	
923.00†	13.460	332.312	916.83	63.86	69.68	-36.56	3314909.43	1356584.59	40.3067213	-104.3708311	2.00	
1023.00†	15.460	332.312	1013.65	84.12	91.79	-48.16	3314897.55	1356606.55	40.3067820	-104.3708727	2.00	
1123.00†	17.460	332.312	1109.55	107.11	116.88	-61.33	3314884.06	1356631.47	40.3068508	-104.3709199	2.00	
1223.00†	19.460	332.312	1204.40	132.81	144.91	-76.04	3314869.00	1356659.32	40.3069278	-104.3709726	2.00	
1323.00†	21.460	332.312	1298.09	161.17	175.87	-92.28	3314852.36	1356690.06	40.3070127	-104.3710309	2.00	
1423.00†	23.460	332.312	1390.50	192.18	209.69	-110.03	3314834.18	1356723.66	40.3071056	-104.3710945	2.00	
1523.00†	25.460	332.312	1481.52	225.78	246.36	-129.27	3314814.48	1356760.07	40.3072062	-104.3711635	2.00	
1623.00†	27.460	332.312	1571.04	261.93	285.81	-149.97	3314793.28	1356799.25	40.3073145	-104.3712377	2.00	
1723.00†	29.460	332.312	1658.95	300.60	328.00	-172.12	3314770.60	1356841.16	40.3074304	-104.3713171	2.00	
1823.00†	31.460	332.312	1745.14	341.74	372.89	-195.67	3314746.48	1356885.74	40.3075536	-104.3714016	2.00	
1923.00†	33.460	332.312	1829.51	385.29	420.41	-220.61	3314720.94	1356932.94	40.3076840	-104.3714910	2.00	
1958.31	34.166	332.312	1858.85	401.24	437.81	-229.74	3314711.59	1356950.22	40.3077318	-104.3715237	2.00	Build (XS)
2023.00†	34.166	332.312	1912.38	430.72	469.98	-246.62	3314694.30	1356982.17	40.3078201	-104.3715842	0.00	
2123.00†	34.166	332.312	1995.12	476.30	519.71	-272.71	3314667.58	1357031.56	40.3079566	-104.3716778	0.00	
2223.00†	34.166	332.312	2077.86	521.87	569.44	-298.81	3314640.85	1357080.96	40.3080931	-104.3717714	0.00	
2323.00†	34.166	332.312	2160.60	567.45	619.17	-324.90	3314614.13	1357130.35	40.3082296	-104.3718649	0.00	
2423.00†	34.166	332.312	2243.34	613.02	668.90	-350.99	3314587.41	1357179.74	40.3083661	-104.3719585	0.00	
2523.00†	34.166	332.312	2326.08	658.60	718.63	-377.09	3314560.68	1357229.13	40.3085026	-104.3720521	0.00	
2623.00†	34.166	332.312	2408.82	704.17	768.36	-403.18	3314533.96	1357278.52	40.3086391	-104.3721456	0.00	

Planned Wellpath Report

Flaherty 13-5-3 PWP Rev-A.0

Page 3 of 8

REFERENCE WELLPATH IDENTIFICATION

Operator	CONFLUENCE RESOURCES	Well	Flaherty 13-5-3
Field	WELD COUNTY (NAD83, TRUE NORTH)	API	0512347449
Facility	SEC.18-T04N-R62W	Wellbore	Flaherty 13-5-3 PWB
Slot	SLOT#22 Flaherty 13-5-3 (491'FSL & 1633'FWL,SEC.18)		

WELLPATH DATA (128 stations) † = interpolated, ‡ = extrapolated station

MD [ft]	Inclination [°]	Azimuth [°]	TVD [ft]	Vert Sect [ft]	North [ft]	East [ft]	Grid East [US ft]	Grid North [US ft]	Latitude	Longitude	DLS [°/100ft]	Comments
2723.00†	34.166	332.312	2491.57	749.75	818.09	-429.28	3314507.23	1357327.91	40.3087756	-104.3722392	0.00	
2823.00†	34.166	332.312	2574.31	795.32	867.81	-455.37	3314480.51	1357377.30	40.3089121	-104.3723328	0.00	
2923.00†	34.166	332.312	2657.05	840.90	917.54	-481.47	3314453.78	1357426.69	40.3090486	-104.3724263	0.00	
3023.00†	34.166	332.312	2739.79	886.47	967.27	-507.56	3314427.06	1357476.08	40.3091851	-104.3725199	0.00	
3123.00†	34.166	332.312	2822.53	932.05	1017.00	-533.66	3314400.33	1357525.47	40.3093216	-104.3726135	0.00	
3223.00†	34.166	332.312	2905.27	977.62	1066.73	-559.75	3314373.61	1357574.86	40.3094581	-104.3727070	0.00	
3323.00†	34.166	332.312	2988.01	1023.20	1116.46	-585.85	3314346.89	1357624.25	40.3095946	-104.3728006	0.00	
3423.00†	34.166	332.312	3070.75	1068.77	1166.19	-611.94	3314320.16	1357673.64	40.3097311	-104.3728942	0.00	
3523.00†	34.166	332.312	3153.50	1114.35	1215.92	-638.03	3314293.44	1357723.03	40.3098676	-104.3729877	0.00	
3623.00†	34.166	332.312	3236.24	1159.92	1265.65	-664.13	3314266.71	1357772.42	40.3100041	-104.3730813	0.00	
3723.00†	34.166	332.312	3318.98	1205.50	1315.38	-690.22	3314239.99	1357821.81	40.3101406	-104.3731749	0.00	
3823.00†	34.166	332.312	3401.72	1251.07	1365.10	-716.32	3314213.26	1357871.20	40.3102771	-104.3732684	0.00	
3923.00†	34.166	332.312	3484.46	1296.65	1414.83	-742.41	3314186.54	1357920.59	40.3104136	-104.3733620	0.00	
4023.00†	34.166	332.312	3567.20	1342.22	1464.56	-768.51	3314159.81	1357969.98	40.3105501	-104.3734556	0.00	
4123.00†	34.166	332.312	3649.94	1387.80	1514.29	-794.60	3314133.09	1358019.37	40.3106866	-104.3735492	0.00	
4223.00†	34.166	332.312	3732.68	1433.37	1564.02	-820.70	3314106.36	1358068.76	40.3108231	-104.3736427	0.00	
4323.00†	34.166	332.312	3815.42	1478.95	1613.75	-846.79	3314079.64	1358118.15	40.3109596	-104.3737363	0.00	
4423.00†	34.166	332.312	3898.17	1524.52	1663.48	-872.89	3314052.92	1358167.54	40.3110961	-104.3738299	0.00	
4523.00†	34.166	332.312	3980.91	1570.10	1713.21	-898.98	3314026.19	1358216.94	40.3112326	-104.3739234	0.00	
4623.00†	34.166	332.312	4063.65	1615.67	1762.94	-925.07	3313999.47	1358266.33	40.3113691	-104.3740170	0.00	
4723.00†	34.166	332.312	4146.39	1661.25	1812.67	-951.17	3313972.74	1358315.72	40.3115056	-104.3741106	0.00	
4823.00†	34.166	332.312	4229.13	1706.82	1862.39	-977.26	3313946.02	1358365.11	40.3116421	-104.3742042	0.00	
4923.00†	34.166	332.312	4311.87	1752.40	1912.12	-1003.36	3313919.29	1358414.50	40.3117786	-104.3742977	0.00	
5023.00†	34.166	332.312	4394.61	1797.97	1961.85	-1029.45	3313892.57	1358463.89	40.3119151	-104.3743913	0.00	
5123.00†	34.166	332.312	4477.35	1843.55	2011.58	-1055.55	3313865.84	1358513.28	40.3120516	-104.3744849	0.00	
5223.00†	34.166	332.312	4560.10	1889.12	2061.31	-1081.64	3313839.12	1358562.67	40.3121881	-104.3745785	0.00	
5323.00†	34.166	332.312	4642.84	1934.69	2111.04	-1107.74	3313812.39	1358612.06	40.3123246	-104.3746720	0.00	
5423.00†	34.166	332.312	4725.58	1980.27	2160.77	-1133.83	3313785.67	1358661.45	40.3124611	-104.3747656	0.00	
5523.00†	34.166	332.312	4808.32	2025.84	2210.50	-1159.93	3313758.95	1358710.84	40.3125976	-104.3748592	0.00	
5623.00†	34.166	332.312	4891.06	2071.42	2260.23	-1186.02	3313732.22	1358760.23	40.3127341	-104.3749528	0.00	

Planned Wellpath Report

Flaherty 13-5-3 PWP Rev-A.0

Page 4 of 8

REFERENCE WELLPATH IDENTIFICATION

Operator	CONFLUENCE RESOURCES	Well	Flaherty 13-5-3
Field	WELD COUNTY (NAD83, TRUE NORTH)	API	0512347449
Facility	SEC.18-T04N-R62W	Wellbore	Flaherty 13-5-3 PWB
Slot	SLOT#22 Flaherty 13-5-3 (491'FSL & 1633'FWL,SEC.18)		

WELLPATH DATA (128 stations) † = interpolated, ‡ = extrapolated station

MD [ft]	Inclination [°]	Azimuth [°]	TVD [ft]	Vert Sect [ft]	North [ft]	East [ft]	Grid East [US ft]	Grid North [US ft]	Latitude	Longitude	DLS [°/100ft]	Comments
5723.00†	34.166	332.312	4973.80	2116.99	2309.96	-1212.11	3313705.50	1358809.62	40.3128706	-104.3750464	0.00	
5823.00†	34.166	332.312	5056.54	2162.57	2359.68	-1238.21	3313678.77	1358859.01	40.3130071	-104.3751399	0.00	
5923.00†	34.166	332.312	5139.28	2208.14	2409.41	-1264.30	3313652.05	1358908.40	40.3131436	-104.3752335	0.00	
6023.00†	34.166	332.312	5222.02	2253.72	2459.14	-1290.40	3313625.32	1358957.79	40.3132801	-104.3753271	0.00	
6123.00†	34.166	332.312	5304.77	2299.29	2508.87	-1316.49	3313598.60	1359007.18	40.3134166	-104.3754207	0.00	
6223.00†	34.166	332.312	5387.51	2344.87	2558.60	-1342.59	3313571.87	1359056.57	40.3135531	-104.3755142	0.00	
6323.00†	34.166	332.312	5470.25	2390.44	2608.33	-1368.68	3313545.15	1359105.96	40.3136896	-104.3756078	0.00	
6423.00†	34.166	332.312	5552.99	2436.02	2658.06	-1394.78	3313518.43	1359155.35	40.3138261	-104.3757014	0.00	
6523.00†	34.166	332.312	5635.73	2481.59	2707.79	-1420.87	3313491.70	1359204.74	40.3139626	-104.3757950	0.00	
6623.00†	34.166	332.312	5718.47	2527.17	2757.52	-1446.97	3313464.98	1359254.13	40.3140991	-104.3758886	0.00	
6723.00†	34.166	332.312	5801.21	2572.74	2807.25	-1473.06	3313438.25	1359303.52	40.3142356	-104.3759821	0.00	
6823.00†	34.166	332.312	5883.95	2618.32	2856.97	-1499.15	3313411.53	1359352.91	40.3143721	-104.3760757	0.00	
6923.00†	34.166	332.312	5966.70	2663.89	2906.70	-1525.25	3313384.80	1359402.31	40.3145086	-104.3761693	0.00	
6948.19	34.166	332.312	5987.54	2675.37	2919.23	-1531.82	3313378.07	1359414.75	40.3145430	-104.3761929	0.00	KOP
7023.00†	37.413	322.209	6048.27	2712.95	2955.83	-1555.54	3313353.89	1359451.04	40.3146435	-104.3762779	9.00	
7123.00†	42.863	311.066	6124.79	2773.39	3002.28	-1599.89	3313308.96	1359496.92	40.3147709	-104.3764370	9.00	
7223.00†	49.184	302.142	6194.26	2844.12	3044.84	-1657.69	3313250.62	1359538.74	40.3148878	-104.3766443	9.00	
7323.00†	56.069	294.835	6254.98	2923.41	3082.47	-1727.52	3313180.31	1359575.48	40.3149910	-104.3768947	9.00	
7423.00†	63.320	288.650	6305.44	3009.31	3114.25	-1807.67	3313099.78	1359606.23	40.3150783	-104.3771821	9.00	
7523.00†	70.806	283.219	6344.41	3099.69	3139.39	-1896.15	3313010.98	1359630.24	40.3151472	-104.3774994	9.00	
7623.00†	78.438	278.267	6370.92	3192.34	3157.27	-1990.79	3312916.13	1359646.91	40.3151963	-104.3778387	9.00	
7723.00†	86.150	273.581	6384.33	3284.97	3167.45	-2089.26	3312817.54	1359655.83	40.3152242	-104.3781918	9.00	
7772.77	90.000	271.291	6386.00†	3330.35	3169.56	-2138.94	3312767.84	1359657.31	40.3152300	-104.3783700	9.00	LANDING
7823.00†	90.000	271.291	6386.00	3375.78	3170.69	-2189.16	3312717.61	1359657.80	40.3152331	-104.3785501	0.00	
7923.00†	90.000	271.291	6386.00	3466.21	3172.94	-2289.14	3312617.62	1359658.78	40.3152393	-104.3789086	0.00	
8023.00†	90.000	271.291	6386.00	3556.65	3175.19	-2389.11	3312517.63	1359659.76	40.3152454	-104.3792671	0.00	
8123.00†	90.000	271.291	6386.00	3647.08	3177.45	-2489.08	3312417.64	1359660.74	40.3152516	-104.3796256	0.00	
8223.00†	90.000	271.291	6386.00	3737.51	3179.70	-2589.06	3312317.65	1359661.72	40.3152577	-104.3799841	0.00	
8323.00†	90.000	271.291	6386.00	3827.94	3181.95	-2689.03	3312217.66	1359662.70	40.3152639	-104.3803426	0.00	
8423.00†	90.000	271.291	6386.00	3918.38	3184.20	-2789.01	3312117.67	1359663.68	40.3152700	-104.3807011	0.00	

Planned Wellpath Report

Flaherty 13-5-3 PWP Rev-A.0

Page 5 of 8

REFERENCE WELLPATH IDENTIFICATION

Operator	CONFLUENCE RESOURCES	Well	Flaherty 13-5-3
Field	WELD COUNTY (NAD83, TRUE NORTH)	API	0512347449
Facility	SEC.18-T04N-R62W	Wellbore	Flaherty 13-5-3 PWB
Slot	SLOT#22 Flaherty 13-5-3 (491'FSL & 1633'FWL,SEC.18)		

WELLPATH DATA (128 stations) † = interpolated, ‡ = extrapolated station

MD [ft]	Inclination [°]	Azimuth [°]	TVD [ft]	Vert Sect [ft]	North [ft]	East [ft]	Grid East [US ft]	Grid North [US ft]	Latitude	Longitude	DLS [°/100ft]	Comments
8523.00†	90.000	271.291	6386.00	4008.81	3186.46	-2888.98	3312017.68	1359664.66	40.3152762	-104.3810596	0.00	
8623.00†	90.000	271.291	6386.00	4099.24	3188.71	-2988.96	3311917.69	1359665.64	40.3152823	-104.3814181	0.00	
8723.00†	90.000	271.291	6386.00	4189.68	3190.96	-3088.93	3311817.70	1359666.61	40.3152885	-104.3817766	0.00	
8823.00†	90.000	271.291	6386.00	4280.11	3193.21	-3188.91	3311717.70	1359667.59	40.3152946	-104.3821351	0.00	
8923.00†	90.000	271.291	6386.00	4370.54	3195.46	-3288.88	3311617.71	1359668.57	40.3153008	-104.3824936	0.00	
9023.00†	90.000	271.291	6386.00	4460.97	3197.72	-3388.86	3311517.72	1359669.55	40.3153069	-104.3828521	0.00	
9123.00†	90.000	271.291	6386.00	4551.41	3199.97	-3488.83	3311417.73	1359670.53	40.3153131	-104.3832106	0.00	
9223.00†	90.000	271.291	6386.00	4641.84	3202.22	-3588.81	3311317.74	1359671.51	40.3153192	-104.3835691	0.00	
9323.00†	90.000	271.291	6386.00	4732.27	3204.47	-3688.78	3311217.75	1359672.49	40.3153253	-104.3839276	0.00	
9423.00†	90.000	271.291	6386.00	4822.71	3206.73	-3788.76	3311117.76	1359673.47	40.3153315	-104.3842861	0.00	
9523.00†	90.000	271.291	6386.00	4913.14	3208.98	-3888.73	3311017.77	1359674.44	40.3153376	-104.3846446	0.00	
9623.00†	90.000	271.291	6386.00	5003.57	3211.23	-3988.70	3310917.78	1359675.42	40.3153438	-104.3850031	0.00	
9723.00†	90.000	271.291	6386.00	5094.00	3213.48	-4088.68	3310817.79	1359676.40	40.3153499	-104.3853616	0.00	
9823.00†	90.000	271.291	6386.00	5184.44	3215.73	-4188.65	3310717.80	1359677.38	40.3153560	-104.3857201	0.00	
9923.00†	90.000	271.291	6386.00	5274.87	3217.99	-4288.63	3310617.81	1359678.36	40.3153622	-104.3860786	0.00	
10023.00†	90.000	271.291	6386.00	5365.30	3220.24	-4388.60	3310517.82	1359679.34	40.3153683	-104.3864371	0.00	
10123.00†	90.000	271.291	6386.00	5455.73	3222.49	-4488.58	3310417.82	1359680.32	40.3153744	-104.3867956	0.00	
10223.00†	90.000	271.291	6386.00	5546.17	3224.74	-4588.55	3310317.83	1359681.30	40.3153806	-104.3871541	0.00	
10323.00†	90.000	271.291	6386.00	5636.60	3227.00	-4688.53	3310217.84	1359682.28	40.3153867	-104.3875126	0.00	
10423.00†	90.000	271.291	6386.00	5727.03	3229.25	-4788.50	3310117.85	1359683.25	40.3153928	-104.3878711	0.00	
10523.00†	90.000	271.291	6386.00	5817.47	3231.50	-4888.48	3310017.86	1359684.23	40.3153990	-104.3882296	0.00	
10623.00†	90.000	271.291	6386.00	5907.90	3233.75	-4988.45	3309917.87	1359685.21	40.3154051	-104.3885881	0.00	
10723.00†	90.000	271.291	6386.00	5998.33	3236.00	-5088.43	3309817.88	1359686.19	40.3154112	-104.3889466	0.00	
10823.00†	90.000	271.291	6386.00	6088.76	3238.26	-5188.40	3309717.89	1359687.17	40.3154173	-104.3893051	0.00	
10923.00†	90.000	271.291	6386.00	6179.20	3240.51	-5288.37	3309617.90	1359688.15	40.3154235	-104.3896636	0.00	
11023.00†	90.000	271.291	6386.00	6269.63	3242.76	-5388.35	3309517.91	1359689.13	40.3154296	-104.3900221	0.00	
11123.00†	90.000	271.291	6386.00	6360.06	3245.01	-5488.32	3309417.92	1359690.11	40.3154357	-104.3903806	0.00	
11223.00†	90.000	271.291	6386.00	6450.49	3247.27	-5588.30	3309317.93	1359691.08	40.3154418	-104.3907391	0.00	
11323.00†	90.000	271.291	6386.00	6540.93	3249.52	-5688.27	3309217.94	1359692.06	40.3154479	-104.3910976	0.00	
11423.00†	90.000	271.291	6386.00	6631.36	3251.77	-5788.25	3309117.95	1359693.04	40.3154541	-104.3914561	0.00	

Planned Wellpath Report

Flaherty 13-5-3 PWP Rev-A.0

Page 6 of 8

REFERENCE WELLPATH IDENTIFICATION

Operator	CONFLUENCE RESOURCES	Well	Flaherty 13-5-3
Field	WELD COUNTY (NAD83, TRUE NORTH)	API	0512347449
Facility	SEC.18-T04N-R62W	Wellbore	Flaherty 13-5-3 PWB
Slot	SLOT#22 Flaherty 13-5-3 (491'FSL & 1633'FWL,SEC.18)		

WELLPATH DATA (128 stations) † = interpolated, ‡ = extrapolated station

MD [ft]	Inclination [°]	Azimuth [°]	TVD [ft]	Vert Sect [ft]	North [ft]	East [ft]	Grid East [US ft]	Grid North [US ft]	Latitude	Longitude	DLS [°/100ft]	Comments
11523.00†	90.000	271.291	6386.00	6721.79	3254.02	-5888.22	3309017.95	1359694.02	40.3154602	-104.3918146	0.00	
11623.00†	90.000	271.291	6386.00	6812.23	3256.27	-5988.20	3308917.96	1359695.00	40.3154663	-104.3921731	0.00	
11723.00†	90.000	271.291	6386.00	6902.66	3258.53	-6088.17	3308817.97	1359695.98	40.3154724	-104.3925316	0.00	
11823.00†	90.000	271.291	6386.00	6993.09	3260.78	-6188.15	3308717.98	1359696.96	40.3154785	-104.3928901	0.00	
11923.00†	90.000	271.291	6386.00	7083.52	3263.03	-6288.12	3308617.99	1359697.94	40.3154846	-104.3932486	0.00	
12023.00†	90.000	271.291	6386.00	7173.96	3265.28	-6388.10	3308518.00	1359698.91	40.3154907	-104.3936071	0.00	
12123.00†	90.000	271.291	6386.00	7264.39	3267.54	-6488.07	3308418.01	1359699.89	40.3154969	-104.3939656	0.00	
12174.44	90.000	271.291	6386.00 [‡]	7310.91	3268.69	-6539.50	3308366.57	1359700.40	40.3155000	-104.3941500	0.00	TD

HOLE & CASING SECTIONS - Ref Wellbore: Flaherty 13-5-3 PWB Ref Wellpath: Flaherty 13-5-3 PWP Rev-A.0

String/Diameter	Start MD [ft]	End MD [ft]	Interval [ft]	Start TVD [ft]	End TVD [ft]	Start N/S [ft]	Start E/W [ft]	End N/S [ft]	End E/W [ft]
9.625in Casing Surface	23.00	1712.73	1689.73	23.00	1650.00	0.00	0.00	323.55	-169.78

REFERENCE WELLPATH IDENTIFICATION

Operator	CONFLUENCE RESOURCES	Well	Flaherty 13-5-3
Field	WELD COUNTY (NAD83, TRUE NORTH)	API	0512347449
Facility	SEC.18-T04N-R62W	Wellbore	Flaherty 13-5-3 PWB
Slot	SLOT#22 Flaherty 13-5-3 (491'FSL & 1633'FWL,SEC.18)		

TARGETS

Name	MD [ft]	TVD [ft]	North [ft]	East [ft]	Grid East [US ft]	Grid North [US ft]	Latitude	Longitude	Shape
SEC.13-T04N-R63W	N/A	0.00	-287.80	33.47	3314984.00	1356228.05	40.3057400	-104.3705800	polygon
2D Polygon: dimensions not calculated									
SEC.13-T04N-R63W (SB 470')	N/A	0.00	-287.80	33.47	3314984.00	1356228.05	40.3057400	-104.3705800	polygon
2D Polygon: dimensions not calculated									
2) Flaherty 13-5-3 BHL REV-1 (1637'FNL & 470'FWL,SEC.13)	12174.44	6386.00	3268.69	-6539.50	3308366.57	1359700.40	40.3155000	-104.3941500	point
1) Flaherty 13-5-3 LP REV-1 (1636'FNL & 470'FEL,SEC.13)	7772.77	6386.00	3169.56	-2138.94	3312767.84	1359657.31	40.3152300	-104.3783700	point

SURVEY PROGRAM - Ref Wellbore: Flaherty 13-5-3 PWB Ref Wellpath: Flaherty 13-5-3 PWP Rev-A.0

Start MD [ft]	End MD [ft]	Positional Uncertainty Model	Log Name/Comment	Wellbore
23.00	1712.73	BH NaviTrak (2019) (Axial)		Flaherty 13-5-3 PWB
1712.73	12219.50	BH AutoTrak Curve/eXpress (2019) (Short spacing)		Flaherty 13-5-3 PWB

Planned Wellpath Report

Flaherty 13-5-3 PWP Rev-A.0

Page 8 of 8

REFERENCE WELLPATH IDENTIFICATION

Operator	CONFLUENCE RESOURCES	Well	Flaherty 13-5-3
Field	WELD COUNTY (NAD83, TRUE NORTH)	API	0512347449
Facility	SEC.18-T04N-R62W	Wellbore	Flaherty 13-5-3 PWB
Slot	SLOT#22 Flaherty 13-5-3 (491'FSL & 1633'FWL,SEC.18)		

DESIGN COMMENTS

MD [ft]	Inclination [°]	Azimuth [°]	TVD [ft]	Comment
23.00	0.000	332.312	23.00	Tie On
250.00	0.000	332.312	250.00	End of Tangent
1958.31	34.166	332.312	1858.85	Build (XS)
6948.19	34.166	332.312	5987.54	KOP
7772.77	90.000	271.291	6386.00	LANDING
12174.44	90.000	271.291	6386.00	TD