



**RULE 304.E. SUBSTANTIALLY EQUIVALENT INFORMATION COVER SHEET**

**Oil and Gas Development Plan Shelduck South Pad, Docket #211000200**

**Shelduck South Pad: Lot 6 Section 6, Township 7 North, Range 60 West**

**Loc ID 455769, Form 2A Doc #402657658**

**Weld County, Colorado**

The attached Weld County Emergency Action Plan is being submitted as a substantially equivalent document to the Emergency Response Plan required by COGCC Rule 304.c.(8).

This document was developed for the Weld County as part of 1041WOGLA20-0059.

This document does not conform to COGCC rules or guidance in the following ways:

None.

This document should be accepted as substantially equivalent:

The Emergency Response Plan was approved as part of the 1041WOGLA application by both the Briggsdale Fire Protection District on 8/3/2020 and Weld County OEM on 8/5/2020. Briggsdale Fire Protection District is an all-volunteer district.

# **SITE SAFETY & EMERGENCY ACTION PLAN**



**Corporate Office  
1400 16<sup>th</sup> Street, Suite 300  
Denver, Colorado 80202  
720-543-7951**

## **SHELDUCK SOUTH PAD**

**Lot 6 Section 6, Township 7 North, Range 60 West  
Unincorporated Weld County**

**Address: 47938 CR 86**

**Proposed Spud Date: 3<sup>rd</sup> Quarter of 2021**

## TABLE OF CONTENTS

### **Section 1 – Signature Page**

### **Section 2 – Site specific information**

- a. Site Safety Requirements
- b. Emergency Muster Point
- c. Location & Coordinates
- d. Site Description
- e. Schools & High Occupancy Buildings
- f. Directions to Location
- g. SDS Sheets & Check-in Procedures

### **Section 3 – Maps & Tactical Response Card**

### **Section 4 – List of Emergency Contacts**

- a. Mallard Personnel
- b. Mallard Media Relations
- c. First Responders
- d. Government Agencies
- e. Medical Facilities
- f. Response Contractors
- g. Railroad

### **Section 5 – Spill Response and Reporting**

- a. Spill Response
- b. Spill Reporting



### **Section 6 – Reportable Quantities**

- a. Reportable Quantities
- b. Tier II Reporting

### **Section 7 – Evacuation Information**

### **Section 8 – Coordination with First Responder Agencies**

## SECTION 1 – SIGNATURE PAGE

Mallard Exploration			
Name	Signature	Title	Date
Erin Mathews		VP Development	7/6/2020
Briggsdale Fire Protection District			
Name	Signature	Title	Date
James Dilke		Firechief BFPP	8-3-2020

Weld County Office of Emergency Management  
Digitally Signed

<p style="font-size: 24pt; margin: 0;">David Burns</p>	<p>Digitally signed by David Burns Date: 2020.08.05 08:54:59 -06'00'</p>
--	--



## SECTION 2 - SITE SPECIFIC INFORMATION

### a. Site Safety Requirements

The minimum personal protective equipment (PPE) to enter any Mallard Exploration (Mallard) production location includes hard hat, safety glasses, safety toe boots, fire resistant clothing (FRC), and a 4-gas monitor. All contractors and visitors are responsible for providing their employees with the appropriate training on and use of PPE while on Mallard locations. In addition, all contract personnel entering a Mallard location to perform work must understand and abide by Mallard's contractor expectations relating to environmental, health, and safety requirements.

The primary hazards that any person must be aware of while on an Mallard production location include, but are not limited to, the potential for release of hydrocarbon gases and/or liquids from production equipment/tanks, heavy truck and equipment traffic, loud noise, high pressures, and the potential for a flash fire. These hazards can vary depending on the work being performed.

### b. Emergency Muster Point

The Shelduck South Pad muster area is identified on the Tactical Response Plan. Generally, a muster area will be setup on location and marked with red signs. The muster area will be pointed out during daily safety meetings.

### c. Location & Coordinates

<b>API#:</b>	05-123-47250-00	Shelduck 6-5-9HN
	05-123-47254-00	Shelduck 6-5-10HN
	05-123-47249-00	Shelduck 6-5-11HC
	05-123-47252-00	Shelduck 6-5-12HN
	05-123-47248-00	Shelduck 6-5-13HN
	05-123-47253-00	Shelduck 6-5-14HN
	05-123-47255-00	Shelduck 6-5-15HC
	05-123-47251-00	Shelduck 6-5-16HN

**Location ID:** 455769

**Legal Description:** Lot 6 Section 6, T7N, R60W

**Address:** 47938 CR 86

**Directions:** From the intersection of Highway 14 and CR 97, south on CR 97 for 2 miles, south on the oil and gas access road 4,000 feet into the location.

**Location Lat/Long:** 40.611380 °N, 104.144782 °W

**d. Site Description**

The Shelduck South Pad is a Mallard oil and gas well pad and production facility that will have up to eight (8) horizontal oil and gas wells, and up to five (5) 500 barrel crude oil storage tanks and up to five (5) 500 barrel produced water tanks located inside a lined secondary containment structure.

**e. Schools & High Occupancy Buildings**

There are no schools or high occupancy buildings within 2500' of the Shelduck South Pad.

**f. Directions to Location**

From the intersection of Highway 14 and CR 97, south on CR 97 for 2 miles, south on the oil and gas access road 4,000 feet into the location.

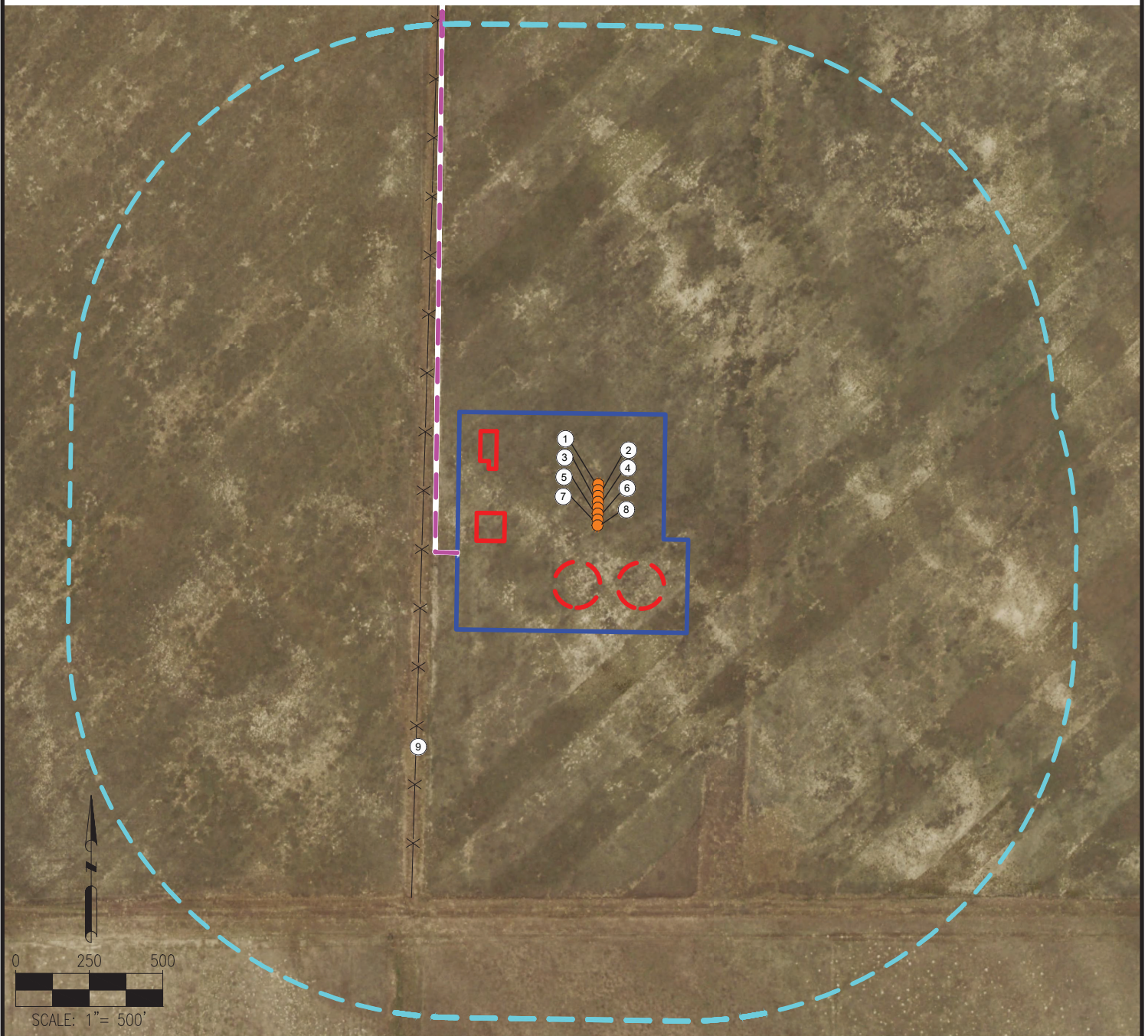
**g. SDS Sheets & Check-in Procedures**

Depending on the phase of operations, the chemicals that may be present will vary. Regardless, hazard communication is a critical safety measure and Safety Data Sheets (SDS's) will be available from the Company Representative present or the contractor performing work on location.

During drilling and completion activities all employees and approved visitors to the Shelduck South Pad will be required to check in with the company representative/contractor supervisor and sign all JSA's, with a safety briefing on the work being performed. Before leaving the location, all employees and approved visitors must check out with the company representative.

Once drilling and completion activities are finalized, the site will transition to its production phase and no unauthorized personnel will be allowed on location without first contacting a company representative. At this point, the primary chemicals stored on site will be crude oil and produced water.

# SHELDUCK SOUTH PAD 1041 WOGLA LOCATION DRAWING



- |                     |                     |
|---------------------|---------------------|
| 1. SHELDUCK 6-5-1HN | 8. SHELDUCK 6-5-8HN |
| 2. SHELDUCK 6-5-2HN | 9. FENCE IS ±594' W |
| 3. SHELDUCK 6-5-3HN |                     |
| 4. SHELDUCK 6-5-4HN |                     |
| 5. SHELDUCK 6-5-5HN |                     |
| 6. SHELDUCK 6-5-6HN |                     |
| 7. SHELDUCK 6-5-7HN |                     |

## LEGEND:

● = PROPOSED WELL

—X—X— = FENCE

— — — = PROPOSED ACCESS ROAD

  = DISTURBANCE AREA  
  = 1320' RADIUS  
  = PROPOSED FACILITY  
  = PROPOSED MLVT

NEAREST BUILDING TO WELL: 3612' NW  
 NEAREST PROPERTY LINE TO WELL: 628' W  
 SWH & RSO - N/A  
 SCHOOLS - +5280' NW FROM DA

## REFERENCE LOCATION

**\*\*SHELDUCK 6-5-4HN\*\***

LAT: 40.600730° N, LONG: 104.142971° W  
 ELEVATION: 4954'  
 1382' FSL & 629' FWL  
 PDOP: 1.2  
 GPS OPERATOR: RYAN DESMOND

DATA SOURCE:  
 AERIAL IMAGERY: NAIP 2019  
 WATER WELLS: COLORADO DWR  
 NHD: USGS

PUBLICLY AVAILABLE DATA SOURCES HAVE NOT BEEN INDEPENDENTLY VERIFIED BY ASCENT.

**DISCLAIMER:**  
 THIS PLOT DOES NOT REPRESENT A MONUMENTED LAND SURVEY AND SHOULD NOT BE RELIED UPON TO DETERMINE BOUNDARY LINES, PROPERTY OWNERSHIP OR OTHER PROPERTY INTERESTS. PARCEL LINES, IF DEPICTED HAVE NOT BEEN FIELD VERIFIED AND MAY BE BASED UPON PUBLICLY AVAILABLE DATA THAT ALSO HAS NOT BEEN INDEPENDENTLY VERIFIED. SURFACE IMPROVEMENTS BEYOND THE 500' COSCC BUFFER MAY NOT BE SURVEY GRADE. SAID IMPROVEMENTS MAY HAVE BEEN LOCATED USING PUBLICLY AVAILABLE SOURCES.

**DISTURBANCE ACREAGE:**  
 12.5 ACRES DRILLING OPERATIONS  
 6.3 ACRES INTERIM RECLAIM

CURRENT SURFACE USE: DRY LAND CROP  
 FUTURE SURFACE USE: DRY LAND CROP



8620 Wolff Court  
 Westminster, CO 80031  
 (303) 928-7128  
[www.ascentgeomatics.com](http://www.ascentgeomatics.com)

FIELD DATE:

12-14-17

DRAWING DATE:

06-23-20

BY:

CSG

CHECKED:

IJM

SITE NAME:

SHELDUCK SOUTH PAD

SURFACE LOCATION:

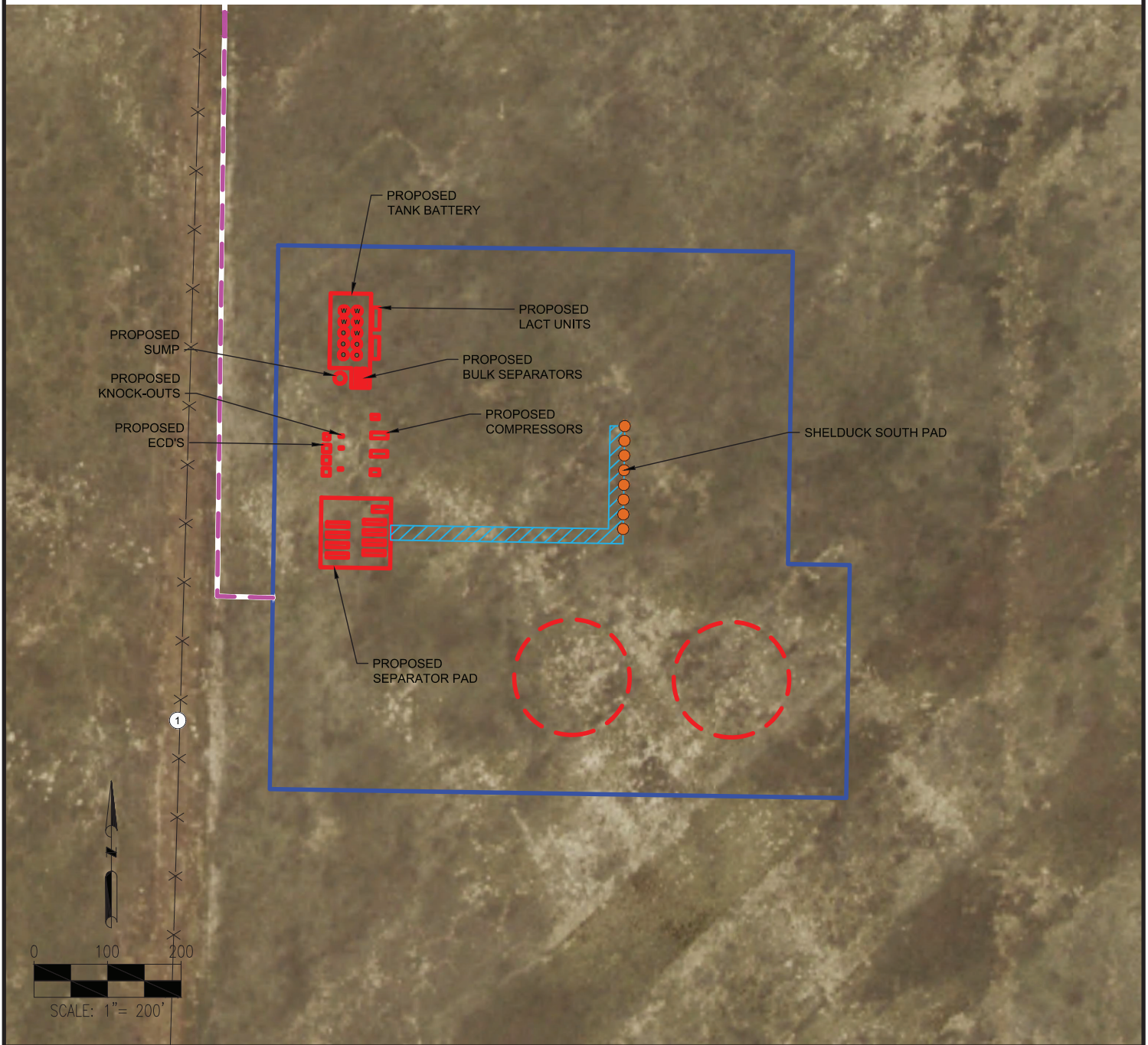
LOT 6 SEC. 6, T7N, R60W, 6TH P.M.  
 WELD COUNTY, COLORADO

PREPARED FOR:





# SHELDUCK SOUTH PAD 1041 WOGLA FACILITY LAYOUT



MEASUREMENTS ARE MADE FROM THE NEAREST EDGE OF THE DISTURBANCE AREA.

1. FENCE IS  $\pm 115'$  W

## LEGEND:

● = PROPOSED WELL



= DISTURBANCE AREA



= PROPOSED 20' FLOWLINE CORRIDOR



= PROPOSED ACCESS ROAD



= PROPOSED MLVT



= PROPOSED FACILITIES



= FENCE

DATA SOURCE:  
AERIAL IMAGE: NAIP 2019  
NHD: USGS  
WATER WELLS: COLORADO DWR  
PUBLICLY AVAILABLE DATA SOURCES HAVE NOT BEEN  
INDEPENDENTLY VERIFIED BY ASCENT.

DISCLAIMER:  
THIS PLOT DOES NOT REPRESENT A MONUMENTED LAND SURVEY AND SHOULD NOT BE  
RELIED UPON TO DETERMINE BOUNDARY LINES, PROPERTY OWNERSHIP OR OTHER  
PROPERTY INTERESTS. PARCEL LINES, IF DEPICTED HAVE NOT BEEN FIELD VERIFIED AND  
MAY BE BASED UPON PUBLICLY AVAILABLE DATA THAT ALSO HAS NOT BEEN  
INDEPENDENTLY VERIFIED.



8620 Wolff Court  
Westminster, CO 80031  
(303) 928-7128  
www.ascentgeomatics.com

FIELD DATE:  
12-14-17

DRAWING DATE:  
06-23-20

BY:  
CSG

CHECKED:  
IJM

SITE NAME:  
SHELDUCK SOUTH PAD

SURFACE LOCATION:  
LOT 6 SEC. 6, T7N, R60W, 6TH P.M.  
WELD COUNTY, COLORADO

PREPARED FOR:



Page 44



## OIL AND GAS FACILITY LIST OF COMPONENTS

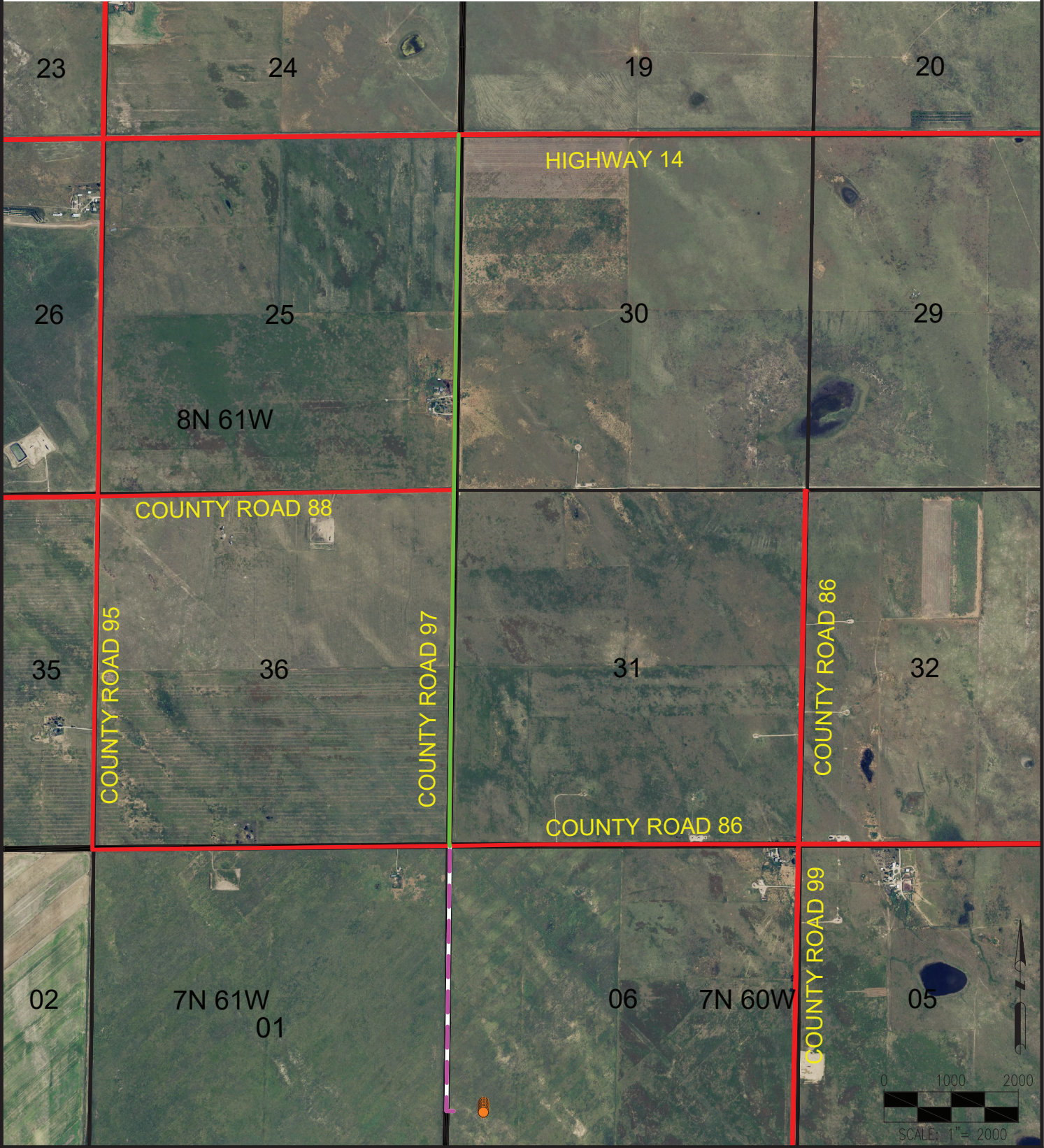
**Shelduck South**  
**Lot 6 Section 6, Township 7 North, Range 60 West**  
**Weld County, Colorado**

### Equipment List

Wells	<u>8</u>	LACT Units	<u>2</u>
Oil Tanks	<u>5</u>	Gas Compressors	<u>3</u>
Water Tanks	<u>5</u>	Gas/Diesel Motors	<u>8</u>
Separators	<u>10</u>	Emission Control Devices	<u>4</u>
Pump Jacks	<u>8</u>	MLVTs	<u>2</u>
Electric Motors	<u>8</u>	Instrument Air Skid	<u>1</u>
Electric Generators	<u>2</u>	Gas Lift Distribution Meter Skid	<u>1</u>
ECD KO Drums	<u>3</u>	Sales Gas Scrubber	<u>1</u>
Sump	<u>1</u>	Sales Gas Skid	<u>1</u>



# SHELDUCK SOUTH PAD ACCESS ROAD MAP



**LEGEND:**  
● = PROPOSED WELL  
— = HAUL ROUTE  
— = SECTION LINE  
--- = PROPOSED ACCESS ROAD  
--- = PUBLIC ROAD

**DISCLAIMER:**  
 THIS PLOT DOES NOT REPRESENT A MONUMENTED LAND SURVEY AND SHOULD NOT BE RELIED UPON TO DETERMINE BOUNDARY LINES, PROPERTY OWNERSHIP OR OTHER PROPERTY INTERESTS. PARCEL LINES, IF DEPICTED HAVE NOT BEEN FIELD VERIFIED AND MAY BE BASED UPON PUBLICLY AVAILABLE DATA THAT ALSO HAS NOT BEEN INDEPENDENTLY VERIFIED.

**DATA SOURCE:**  
 AERIAL IMAGERY: NAIP 2015  
 PLSS: BLM  
 PUBLICLY AVAILABLE DATA SOURCES HAVE NOT BEEN INDEPENDENTLY VERIFIED BY ASCENT.



## SECTION 4 - LIST OF EMERGENCY CONTACTS

### a. Mallard Exploration Personnel

Contact		Phone
Corporate Office 1400 16 <sup>th</sup> Street, Suite 300 Denver, Colorado 80202		720-543-7951
<b>24 Hour Emergency Response</b>		<b>719-358-4107</b>
Emergency Response Coordinators		
	Primary: Dustin Dyk	O: 720-543-7954 C: 720-670-6073
	Secondary: Cory Eikenberg	C: 970-673-2023

### b. Mallard Media Relations

Contact	Phone
John Tonello	720-543-7952

### c. First Responders

Contact	Emergency	Office Phone
Briggsdale Fire Protection District	911	970-656-3503
Weld County Sheriff	911	970-356-4015
Colorado State Highway Patrol	911	970-506-4999

### d. Government Agencies

Contact	Phone
Colorado Oil & Gas Conservation Commission (COGCC)	303-894-2100
Colorado Department of Health & Environment (CDPHE)	877-518-5608
Colorado Parks & Wildlife (CPW)	303-291-7227
National Response Center	800-424-8802
Weld County Local Government Designee (LGD)	970-400-3579
Weld County Office of Emergency Management (OEM)	970-304-6540
Colorado Department of Transportation	855-368-4200
EPA Region 8	303-312-6312
Colorado Department of Natural Resources	303-312-6312

**e. Medical Facilities**

Contact	Distance from Location	Phone
Northern Colorado Medical Center - Banner Health* 1801 16 <sup>th</sup> Street, Greeley, CO 80631	43 miles 51 min ground travel time	970-810-4121
UC Health Greeley Hospital 6767 West 29 <sup>th</sup> Street, Greeley, CO 80634	49 miles 56 min ground travel time	970-652-2000
Colorado Plains Medical Center 1000 Lincoln St Ste 101, Fort Morgan, CO 80701	46 miles 48 min ground travel time	970-867-3391
UC Health Poudre Valley Hospital 1024 South Lemay Avenue, Fort Collins, CO 80524	53 miles 60 min ground travel time	970-495-7500

\*Hospital has a burn unit

**f. Response Contractors**

Response Type	Contact	24 Hour	Office Phone
Well Control	Boots & Coots	281-931-8884	800-256-9688
Well Control	Wild Well Control	281-784-4700	817-247-8175
EHS/Spill	Hellman & Associates	303-384-9828	
EHS/Spill	Kinetic Energy Services	720-552-1221	
EHS/Spill	H2E, Inc	970-556-4712	

**g. Railroad Emergency Response**

Contact	Phone
*No railroads within one mile	



## **SECTION 5 - SPILL RESPONSE AND CLEAN UP**

### **a. Spill Response**

There are multiple types of hydrocarbons which can be released/spilled during oil and gas production and exploration. Most commonly released are unrefined products such as crude oil and produced water. Refined petroleum products such as diesel, gasoline, and motor oil spills are less common, but still equally important to mitigate. If a spill is found reportable, it will be mitigated in accordance with Colorado Oil and Gas Conservation Commission (COGCC) and Colorado Department of Public Health and Environment (CDPHE) guidelines.

Once a release has been identified, it will be immediately stopped and contained if possible and is safe to do so. When containing a spill; pig blankets, snakes, absorbent materials, or earthen berms will be constructed around the release to keep material from spreading. Diligent efforts will be made to minimize contact with live vegetation or open water if release is outside of secondary containment structures.

In the event of a large incident requiring outside assistance, Mallard has contracts with various Response Contractors, see table in Section 4.f. The Response Contractors possess a working knowledge of oil and gas operations, emergency response and Incident Command. Once notified the Response Contractor can be on location within 12 hours.

### **b. Spill Reporting**

The following spills shall be reported to the following agencies:

- A spill/release will be reported to the COGCC if released material is property of Mallard and meets the COGCC reporting thresholds (see below), an example would be crude oil released from a separator or produced water from a water vault.
- A spill/release will be reported to the Weld County LEPC if released material is property of Mallard and meets the COGCC reporting thresholds (see below).
- A spill/release will be reported to the CDPHE if released material is in the custody of a third party for spills that meet CDPHE reporting thresholds, are of any size that impact or threaten to impact waters of the state, a residence or occupied structure, livestock or public byway. An example would be an oil hauler over filling a truck and spills product onto the ground next to a flowing irrigation ditch.

There are three (3) release volume thresholds which determine if a hydrocarbon spill is reportable.

These are:

1. If crude oil or produced water is released **INSIDE** secondary containment and volume is greater than **FIVE (5) barrels**.
2. If crude oil or produced water is **OUTSIDE** secondary containment and volume is greater than **ONE (1) barrel**.
3. If more than **TWENTY-FIVE (25) GALLONS** of petroleum product such as diesel, gasoline or motor oil is spilled **OUTSIDE** of secondary containment.

Once a spill is determined reportable, there is a 24-hour deadline to make initial notification to the COGCC or CDPHE depending on product ownership. Spills/releases in the custody of Mallard will be reported by a Company representative. Spills/releases in the custody of a third party will be reported by the responsible company's EHS Department to the appropriate agency and to Mallard.

These regulatory guidelines will be strictly followed by Mallard and any contractors operating under Mallard's guidance during all activities at the Shelduck South Pad.

## **SECTION 6 - REPORTABLE QUANTITIES**

### **a. Reportable quantities**

Mandated by Section 312 of the Emergency Planning and Community Right-To-Know Act (EPCRA) – also known as SARA Title III – the Tier II form captures information about the types, quantities, and locations of hazardous chemicals at a given facility. The form also lists contact information for the facility's designated emergency point-of-contact.

Any facility that is required to maintain MSDSs (or SDSs) under the Occupational Safety and Health Administration (OSHA) regulations for hazardous chemicals stored or used in the workplace. Facilities with chemicals in quantities that equal or exceed the lists of lists thresholds must report.

- Propane, benzene, propene and methane are on the lists of lists and are known to be in crude oil. In addition, diesel is on the lists of lists and may be stored on sites during construction.

### **b. Reportable requirements**

If your facility will meet the requirements under 40 CFR, you must submit your Tier II report to the state every year before March 1<sup>st</sup>. These regulatory guidelines will be strictly followed by Mallard and any contractors operating under Mallard's guidance during all activities at the Shelduck South Pad.

## **SECTION 7 – EVACUATION INFORMATION**

The procedure to be used in alerting nearby persons in the event of any occurrence that could pose a threat to life or property will be arranged and completed with public officials in detail.

In the event of an actual emergency, the following steps will be immediately taken:

1. Mallard Company Representative will immediately notify proper authorities, including the sheriff's office, highway patrol, and any other public officials as described above and will enlist their assistance in warning residents and transients in the calculated radius of exposure.
2. Mallard will coordinate with local authorities to warn residents' down-wind of the location and within radius of exposure from the well site. Additional evacuation zones may be necessary as the situation warrants.
3. Mallard Company Representative will coordinate with appropriate emergency personnel to divert traffic in the vicinity away from the potentially dangerous area. No trespassing and warning signs will be posted at the entrance to the well site. Essential and non-essential traffic on-site will be monitored.
4. General:
  - a. The area included within the radius of exposure is considered to be the zone with the maximum potential hazard. When it is determined that conditions exist which create an additional area (beyond the initial zone of maximum potential hazard) vulnerable to possible hazard, public areas in the additional hazardous area will be evacuated.
  - b. In the event of a disaster, after the public areas have been evacuated and traffic stopped, it is expected that local civil authorities will have arrived and within a few hours will have assumed direction of and control of the public, including all public areas. Mallard will cooperate with these authorities to the fullest extent and will exert every effort by careful advice to such authorities to prevent panic or rumors.
  - c. Mallard will dispatch appropriate personnel to the disaster site as soon as possible. The company's personnel will cooperate with and provide such information to civil authorities as they might require.

## **SECTION 8 - COORDINATION WITH FIRST RESPONDER AGENCIES**

Mallard will communicate site construction, drill spud, completion operations and Production Turn-In-Line dates to the Weld County Office of Emergency Management for coordination/communication with local first responders. These start dates will be provided a minimum of 7 business days prior to commencement or change in oil and gas development operations.

In the event of an emergency requiring First Responders, Unified Command will be established between the Mallard appointed company man on location and First Responders present. Unified Command post will be established based on conditions present at time of incident.

While foam is not currently supplied for oil and gas emergency response, Mallard is an active member of Front Range Emergency Resource Corporative (FRERC), and a solution is being sought thorough a cooperative effort including other operators, First Responders and Weld County.

Mallard's representative and first responders identified in this Site Safety and Emergency Action Plan have reviewed this plan and discussed coordination efforts in the event of an emergency situation requiring first responder assistance.



# SHELDUCK SOUTH PAD TACTICAL RESPONSE PLAN

**Address: 47938 CR 86**

**SITE ACCESS: 40.611380 °N, 104.144782 °W**  
**SITE LOCATION: 40.600730 °N, 104.142971 °W**

## NOTIFICATIONS

1. Mallard Exploration, LLC. 24-Hour Hotline  
719-358-4107
2. National Response Center:  
800-424-8802
3. Colorado Department of Natural Resources  
303-866-3311
4. EPA Region VIII  
303-312-6312
5. Weld County Communications  
911
6. Weld County OEM  
970-350-9600
7. Colorado Oil and Gas Conservation Commission  
303-894-2100
8. Colorado Department of Public Health and Environment 877-518-5608
9. Briggsdale Fire Protection District  
970-656-3503

## RESPONSE OBJECTIVES

Ensure safety of the public, first responders, Mallard Exploration, LLC. employees, and contractors. Minimize the impact to the environment and local community. Contain and recover released product to the extent possible.

## CRITICAL RECEPTORS

1. Existing Fence

Note: This Tactical Response Card is a reference tool and is intended to provide guidance during an actual event or exercise. Placement of resources may need to be adjusted according to environmental variables. It is the responsibility of emergency response personnel to be trained in response and to be able to make adjustments to the card as needed.

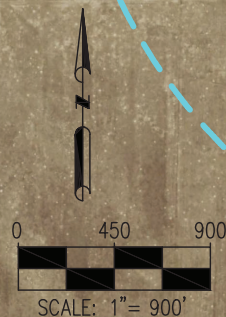
**DATA SOURCES:**  
 -AERIAL IMAGERY: NAIP 2019  
 -HYDROLOGY: NHD

**PUBLICLY AVAILABLE DATA SOURCES HAVE NOT BEEN INDEPENDENTLY VERIFIED BY ASCENT.**

This plot does not represent a monumented land survey and should not be relied upon to determine boundary lines, property ownership or other property interests. Parcel lines, if depicted have not been field verified and may be based upon publicly available data that also has not been independently verified. This exhibit is based upon a desktop analysis and has not been surveyed.

## LEGEND

- = PROPOSED DISTURBANCE AREA
- = PROPOSED FACILITIES
- = STAGING AREA
- = MUSTER POINT
- E = SITE ACCESS
- X—X— = FENCE
- = PROPOSED ACCESS ROAD
- = HOT ZONE (250')
- = WARM ZONE (500')
- = COLD ZONE (1000')
- = ERG ZONE (2500')
- = PROPOSED WELL



FIELD DATE:  
12-14-17

DRAWING DATE:  
06-23-20

BY:  
CSG

CHECKED BY:  
IJM

SITE NAME:  
SHELDUCK SOUTH PAD

SURFACE LOCATION:  
LOT 6 SEC. 6, T7N, R60W, 6TH P.M.  
WELD COUNTY, COLORADO

PREPARED FOR:



## FIRE DEPARTMENT RESPONSE GUIDELINES

### COMMAND

- Establish initial command post near the oil & gas location entrance.
- Position should provide a clear view of the entire scene
- Advise responding units and resources to stage near location entrance.
- Locate operator lease sign on location (located at the entrance /site access)
- If industry personnel are not on location, call the 24-Hour Emergency Contact number located on the sign.
- Establish unified command with operator on-site liaison
- Develop incident action plan with the operator to mitigate incident
- **Strategy - Always defensive unless a life safety need is identified!**

### INCIDENT STABILIZATION

- Implement Hazardous Materials response protocols
- All personnel operating in hazard zones should be in appropriate PPE, to include a personal mobile air monitoring device
- Establish Hot, Warm, Cold Zones, and ERG zones
- Exposure Concerns --- Equipment, nearby structures, neighborhoods, roadways, etc.
- Monitor weather conditions, especially wind direction
- Air monitoring for vulnerable areas and locations around incident.
- Conduct evacuations of citizens, bystanders, and resources at risk
- Identify and address any water supply and/or foam requirements necessary to mitigate the incident

### SPECIAL CONSIDERATIONS

- Consider and address any potential impacts to critical receptors identified near the location

Consider requiring a fire investigation for any fire and/or explosion

## INDUSTRY RESPONSE OBJECTIVES

Ensure safety of the public, first responders, employees, and contractors. Minimize impact to environment and local

### INDUSTRY RESPONSE OBJECTIVES

Ensure safety of the public, first responders, employees, and contractors. Minimize impact to the environment and local community. The following response objectives checklist shall be followed:

#### SAFETY - PROTECT LIFE

- Evaluate and account for all personnel
- Isolate all potential ignition sources
- Establish site control (safe perimeter and evacuation routes)
- Contact emergency services as needed (911, Fire, LEPC)
- Identify hazard(s) of emitted material (obtain SDS)
- Monitor air around impacted area
- Continually assess site hazards/risks

#### RESPONSE - INCIDENT STABILIZATION

- Notify internal personnel and agencies
- Establish command post and field communications
- Identify and establish staging areas to support response operations
- Activate response tactics to control fluids
- Activate response company for equipment and manpower as needed
- Implement waste handling, disposal and decontamination procedures as needed
- Assign on-site liaison to the incident commander
- Establish Air Traffic restriction if required

#### ENVIRONMENTAL - PROTECT THE ENVIRONMENT

- Identify, prioritize, and protect sensitive areas
- Implement recovery efforts of fluids
- Verify if water has been impacted
- Notify appropriate agencies

## FACILITY INFORMATION

### Well Pad Liquid Storage:

- Oil (BBL) - 2500 BBL
- Water (BBL) - 2500 BBL
- \*1 Barrel (BBL) = 42 Gallons

### Specific Facility Hazardous Conditions:

(D=drilling, C=construction, F=flowback, O=operations)

#### Substance Specific Hazards

Hydrocarbons under pressure - D, C, F, O  
Toxic Substances, Hazardous Materials- D, C, F, O  
Liquids and Gases under High Pressure- D, C, F, O  
Hot or cryogenic fluids- D, F, O  
Blasting Agents, Explosive Substances D, C

#### Equipment Specific Hazards

Dangerous Equipment - D, C, F, O  
Ignition Sources- D, C, F, O  
Lifting Facilities/Heights- D, C  
Radiation - N/A

#### General Hazards

Special Locations- N/A  
Transportation / Traffic- D, C, F, O  
Surrounding-Related Hazards- D, C, F, O  
Weather- D, C, F, O  
Flooding- D, C, F, O  
H2S- D, C, F, O  
Wildlife- D, C, F, O

### Is Water Supply Available on Location?

During completion activities fresh water will be available on-site. A second water line will be teed off of the main water supply line that provides water for hydraulic fracturing operations prior to it being treated for downhole use. This second water line will be accessible at the entrance to the location via a hydrant and can be used to fill fire porta-tanks as needed.

### Nearest Foam Resources:

- Briggsdale Fire
- Ault Pierce Fire
- Greeley Fire