

CONFLUENCE RESOURCES



Location: COLORADO Slot: SLOTR04 Middlepark 18-5-3L (261FSL & 1618FWL,SEC.18)

Field: WELD COUNTY (NAD83, TRUE NORTH) Well: Middlepark 18-5-3L

Facility: SEC.18-T04N-R62W Wellbore: Middlepark 18-5-3L PWB

Plot reference wellpath is Middlepark 18-5-3L PWP RevA.0

True vertical depths are referenced to Rig (23) (KB)

Reference wellpath measured depths are referenced to Rig (23) (KB)

Rig (23) (KB) to Mean Sea Level: 4586 feet

Mean Sea Level to Mud line (At Slot: SLOTR04 Middlepark 18-5-3L (261FSL & 1618FWL,SEC.18)): 0 feet

Offset wellpath MDs are referenced to each path's default MD datum

Grid System: NAD83 / Lambert Colorado SP, Northern Zone (501), US feet

North Reference: True north

Scale: True distance

Coordinates are in feet referenced to Slot

Depths are in feet

Created by: painsetr on 2021-12-01; Database: WellArchitectDB

Location Information

Facility Name	Grid East (US ft)	Grid North (US ft)	Latitude	Longitude
SEC.18-T04N-R62W	3314967.040	1356246.051	40.3057900°	-104.3706400°
Slot	Local N (ft)	Local E (ft)	Grid East (US ft)	Grid North (US ft)
SLOTR04 Middlepark 18-5-3L (261FSL & 1618FWL,SEC.18)	40.07	-30.68	3314935.853	1356285.729
Rig (23) (KB) to Mud line (At Slot: SLOTR04 Middlepark 18-5-3L (261FSL & 1618FWL,SEC.18))			45988	
Mean Sea Level to Mud line (At Slot: SLOTR04 Middlepark 18-5-3L (261FSL & 1618FWL,SEC.18))			0	
Rig (23) (KB) to Mean Sea Level			45988	

Hole and Casing Sections

Name	Start MD (ft)	End MD (ft)	Interval (ft)	Start TVD (ft)	End TVD (ft)	Start Local N (ft)	Start Local E (ft)	End Local N (ft)	End Local E (ft)	Wellbore
9.625in Casing Surface	23.00	1701.51	1678.51	23.00	1650.00	0.00	0.00	-78.71	328.70	Middlepark 18-5-3L PWB

Survey Program

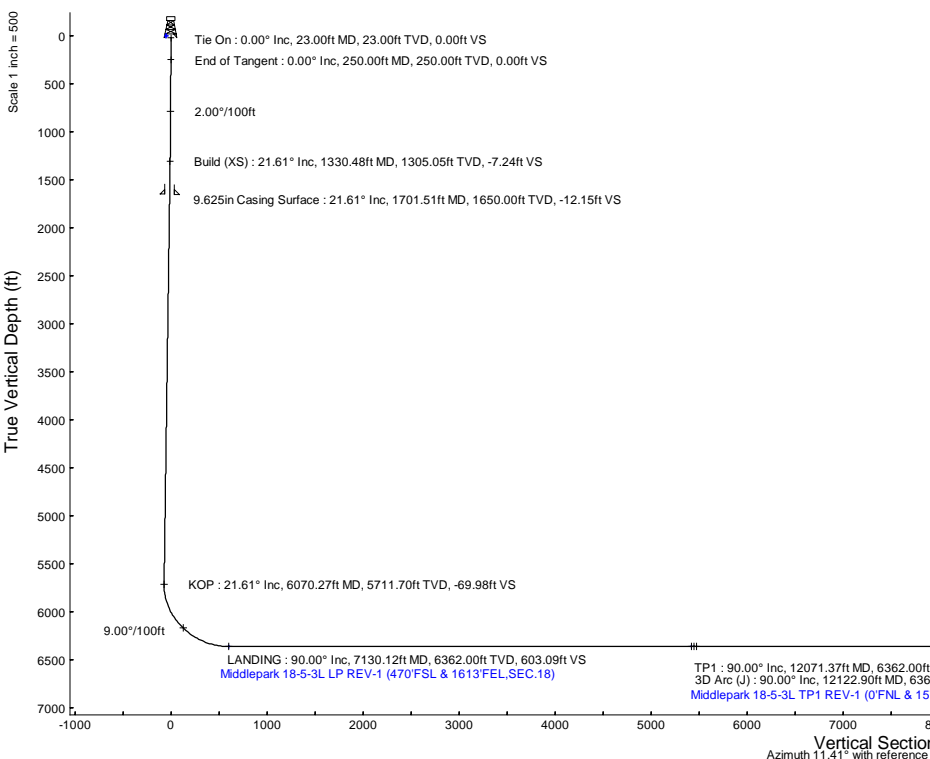
Start MD (ft)	End MD (ft)	Tool	Model	Log Name/Comment	Wellbore
23.00	1701.51	BH NavTrak (2019)	BH NavTrak (2019) (Axial)		Middlepark 18-5-3L PWB
1701.51	16825.64	BH AutoTrak Curve/xpress (2019)	BH AutoTrak Curve/xpress (2019) (Short spacing)		Middlepark 18-5-3L PWB

Bottom Hole Location

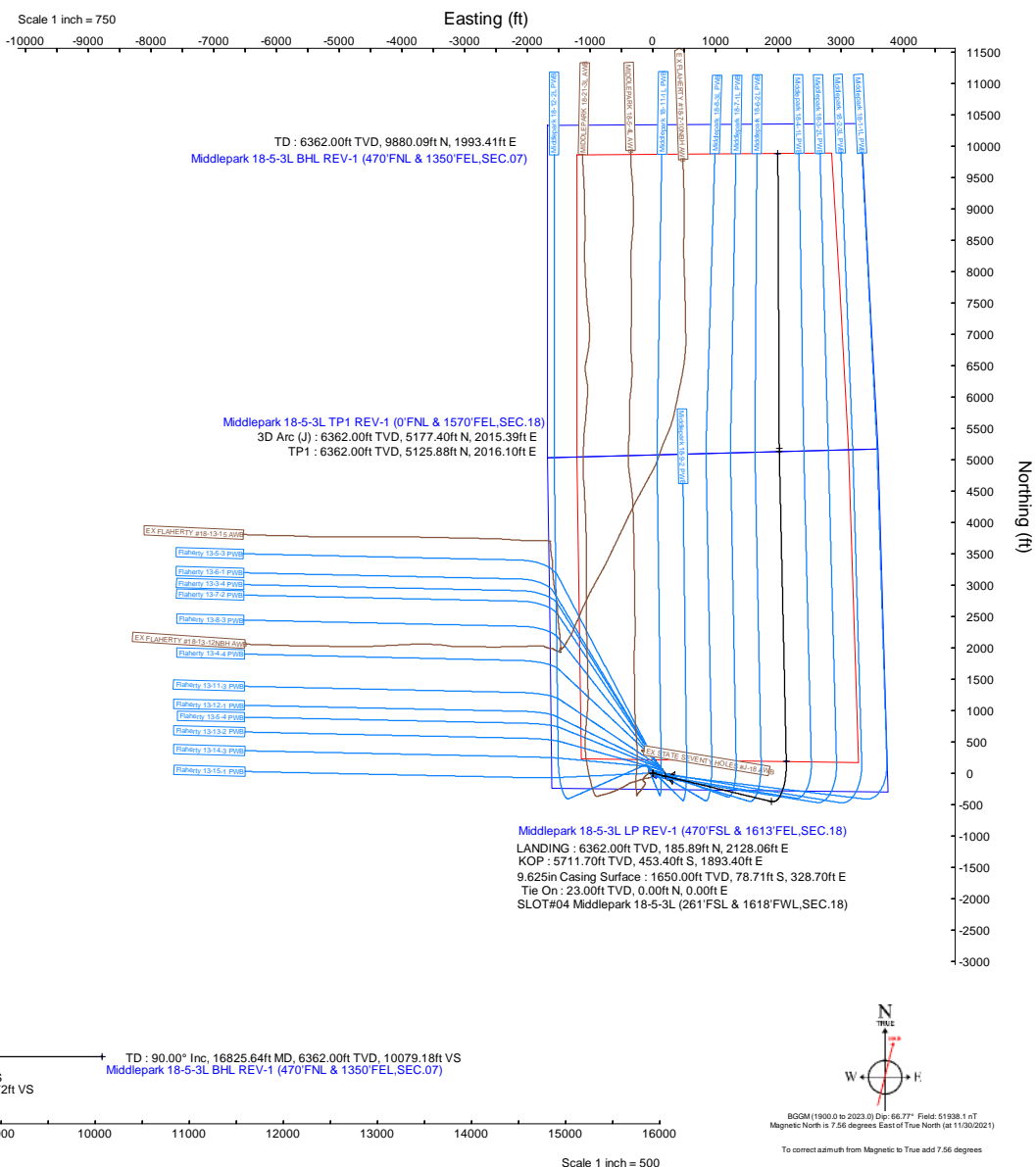
MD (ft)	Inc (°)	Az (°)	TVD (ft)	Local N (ft)	Local E (ft)	Grid East (US ft)	Grid North (US ft)	Latitude	Longitude
16825.64	90.000	359.732	6362.00	9880.09	1993.41	3316803.20	1366189.96	40.3330200°	-104.3636000°

Targets

Name	MD (ft)	TVD (ft)	Local N (ft)	Local E (ft)	Grid East (US ft)	Grid North (US ft)	Latitude	Longitude
SEC.07-T04N-R62W	N/A	0.00	-58.29	47.41	3314984.00	1356228.05	40.3057400°	-104.3705800°
SEC.07/18-T04N-R62W (SB 470)	N/A	0.00	-58.29	47.41	3314984.00	1356228.05	40.3057400°	-104.3705800°
SEC.18-T04N-R62W	N/A	0.00	-58.29	47.41	3314984.00	1356228.05	40.3057400°	-104.3705800°
Middlepark 18-5-3L BHL REV-1 (470FNL & 1350FEL,SEC.07)	16825.64	6362.00	9880.09	1993.41	3316803.20	1366189.96	40.3330200°	-104.3636000°
Middlepark 18-5-3L LP REV-1 (470FSL & 1613FEL,SEC.18)	7130.12	6362.00	185.89	2128.06	3317061.28	1356498.69	40.3064100°	-104.3631200°
Middlepark 18-5-3L TP1 REV-1 (0FNL & 1570FEL,SEC.18)	12071.37	6362.00	5125.88	2016.10	3316886.42	1361436.63	40.3199700°	-104.3635200°



Design Comment	MD (ft)	Inc (°)	Az (°)	TVD (ft)	Local N (ft)	Local E (ft)	DLS (°/100ft)	VS (ft)
Tie On	23.00	0.000	103.467	23.00	0.00	0.00	0.00	0.00
End of Tangent	250.00	0.000	103.467	250.00	0.00	0.00	0.00	0.00
Build (XS)	1330.48	21.610	103.467	1305.05	-46.89	195.82	2.00	-7.24
KOP	6070.27	21.610	103.467	5711.70	-453.40	1893.40	0.00	-69.98
LANDING	7130.12	90.000	358.702	6362.00	185.89	2128.06	9.00	603.09
TP1	12071.37	90.000	358.702	6362.00	5125.88	2016.10	0.00	5423.36
3D Arc (J)	12122.90	90.000	359.732	6362.00	5177.40	2015.39	2.00	5473.72
TD	16825.64	90.000	359.732	6362.00	9880.09	1993.41	0.00	10079.18



Planned Wellpath Report

Middlepark 18-5-3L PWP Rev-A.0

Page 1 of 10

REFERENCE WELLPATH IDENTIFICATION

Operator	CONFLUENCE RESOURCES	Well	Middlepark 18-5-3L
Field	WELD COUNTY (NAD83, TRUE NORTH)	API	0512347460
Facility	SEC.18-T04N-R62W	Wellbore	Middlepark 18-5-3L PWB
Slot	SLOT#04 Middlepark 18-5-3L (261'FSL & 1618'FWL,SEC.18)		

REPORT SETUP INFORMATION

Projection System	NAD83 / Lambert Colorado SP, Northern Zone (501), US feet	Software System	WellArchitect® 6.0
North Reference	True	User	Painsetr
Scale	0.999957	Report Generated	12/1/2021 at 8:14:09 PM
Convergence at slot	0.73° East	Database	WellArchitectDB

WELLPATH LOCATION

	Local coordinates		Grid coordinates		Geographic coordinates	
	North[ft]	East[ft]	Easting[US ft]	Northing[US ft]	Latitude	Longitude
Slot Location	40.07	-30.68	3314935.85	1356285.73	40.3059000°	-104.3707500°
Facility Reference Pt			3314967.04	1356246.05	40.3057900°	-104.3706400°
Field Reference Pt			3230456.90	1245096.09	40.0032400°	-104.6773400°

WELLPATH DATUM

Calculation method	Minimum curvature	Rig (23') (KB) to Facility Vertical Datum	4586.00ft
Horizontal Reference Pt	Slot	Rig (23') (KB) to Mean Sea Level	4586.00ft
Vertical Reference Pt	Rig (23') (KB)	Rig (23') (KB) to Mud Line at Slot (SLOT#04 Middlepark 18-5-3L (261'FSL & 1618'FWL,SEC.18))	4586.00ft
MD Reference Pt	Rig (23') (KB)	Section Origin	N 0.00, E 0.00 ft
Field Vertical Reference	Mean Sea Level	Section Azimuth	11.41°

Planned Wellpath Report

Middlepark 18-5-3L PWP Rev-A.0

Page 2 of 10

REFERENCE WELLPATH IDENTIFICATION

Operator	CONFLUENCE RESOURCES	Well	Middlepark 18-5-3L
Field	WELD COUNTY (NAD83, TRUE NORTH)	API	0512347460
Facility	SEC.18-T04N-R62W	Wellbore	Middlepark 18-5-3L PWB
Slot	SLOT#04 Middlepark 18-5-3L (261'FSL & 1618'FWL,SEC.18)		

WELLPATH DATA (177 stations) † = interpolated, ‡ = extrapolated station

MD [ft]	Inclination [°]	Azimuth [°]	TVD [ft]	Vert Sect [ft]	North [ft]	East [ft]	Grid East [US ft]	Grid North [US ft]	Latitude	Longitude	DLS [°/100ft]	Comments
0.00†	0.000	103.467	0.00	0.00	0.00	0.00	3314935.85	1356285.73	40.3059000	-104.3707500	0.00	
23.00	0.000	103.467	23.00	0.00	0.00	0.00	3314935.85	1356285.73	40.3059000	-104.3707500	0.00	Tie On
123.00†	0.000	103.467	123.00	0.00	0.00	0.00	3314935.85	1356285.73	40.3059000	-104.3707500	0.00	
223.00†	0.000	103.467	223.00	0.00	0.00	0.00	3314935.85	1356285.73	40.3059000	-104.3707500	0.00	
250.00	0.000	103.467	250.00	0.00	0.00	0.00	3314935.85	1356285.73	40.3059000	-104.3707500	0.00	End of Tangent
323.00†	1.460	103.467	322.99	-0.03	-0.22	0.90	3314936.76	1356285.52	40.3058994	-104.3707468	2.00	
423.00†	3.460	103.467	422.89	-0.19	-1.22	5.08	3314940.95	1356284.58	40.3058967	-104.3707318	2.00	
523.00†	5.460	103.467	522.59	-0.47	-3.03	12.64	3314948.53	1356282.86	40.3058917	-104.3707047	2.00	
623.00†	7.460	103.467	621.95	-0.87	-5.65	23.58	3314959.50	1356280.38	40.3058845	-104.3706655	2.00	
723.00†	9.460	103.467	720.85	-1.40	-9.07	37.89	3314973.85	1356277.14	40.3058751	-104.3706142	2.00	
823.00†	11.460	103.467	819.19	-2.05	-13.30	55.54	3314991.56	1356273.14	40.3058635	-104.3705509	2.00	
923.00†	13.460	103.467	916.83	-2.83	-18.33	76.52	3315012.60	1356268.38	40.3058497	-104.3704756	2.00	
1023.00†	15.460	103.467	1013.65	-3.73	-24.14	100.81	3315036.96	1356262.88	40.3058337	-104.3703886	2.00	
1123.00†	17.460	103.467	1109.55	-4.74	-30.74	128.36	3315064.59	1356256.63	40.3058156	-104.3702898	2.00	
1223.00†	19.460	103.467	1204.40	-5.88	-38.11	159.15	3315095.47	1356249.65	40.3057954	-104.3701794	2.00	
1323.00†	21.460	103.467	1298.09	-7.14	-46.25	193.15	3315129.56	1356241.94	40.3057730	-104.3700575	2.00	
1330.48	21.610	103.467	1305.05	-7.24	-46.89	195.82	3315132.24	1356241.34	40.3057713	-104.3700479	2.00	Build (XS)
1423.00†	21.610	103.467	1391.06	-8.46	-54.83	228.95	3315165.48	1356233.83	40.3057495	-104.3699291	0.00	
1523.00†	21.610	103.467	1484.03	-9.79	-63.40	264.77	3315201.40	1356225.71	40.3057260	-104.3698007	0.00	
1623.00†	21.610	103.467	1577.01	-11.11	-71.98	300.58	3315237.32	1356217.59	40.3057024	-104.3696723	0.00	
1723.00†	21.610	103.467	1669.98	-12.43	-80.56	336.40	3315273.24	1356209.47	40.3056789	-104.3695439	0.00	
1823.00†	21.610	103.467	1762.95	-13.76	-89.13	372.21	3315309.16	1356201.35	40.3056553	-104.3694155	0.00	
1923.00†	21.610	103.467	1855.92	-15.08	-97.71	408.03	3315345.08	1356193.23	40.3056318	-104.3692871	0.00	
2023.00†	21.610	103.467	1948.89	-16.40	-106.29	443.85	3315381.00	1356185.11	40.3056082	-104.3691586	0.00	
2123.00†	21.610	103.467	2041.86	-17.73	-114.86	479.66	3315416.92	1356176.99	40.3055847	-104.3690302	0.00	
2223.00†	21.610	103.467	2134.83	-19.05	-123.44	515.48	3315452.84	1356168.87	40.3055612	-104.3689018	0.00	
2323.00†	21.610	103.467	2227.81	-20.38	-132.02	551.29	3315488.76	1356160.75	40.3055376	-104.3687734	0.00	
2423.00†	21.610	103.467	2320.78	-21.70	-140.59	587.11	3315524.68	1356152.63	40.3055141	-104.3686450	0.00	
2523.00†	21.610	103.467	2413.75	-23.02	-149.17	622.92	3315560.60	1356144.51	40.3054905	-104.3685166	0.00	
2623.00†	21.610	103.467	2506.72	-24.35	-157.75	658.74	3315596.52	1356136.39	40.3054670	-104.3683882	0.00	

REFERENCE WELLPATH IDENTIFICATION

Operator	CONFLUENCE RESOURCES	Well	Middlepark 18-5-3L
Field	WELD COUNTY (NAD83, TRUE NORTH)	API	0512347460
Facility	SEC.18-T04N-R62W	Wellbore	Middlepark 18-5-3L PWB
Slot	SLOT#04 Middlepark 18-5-3L (261'FSL & 1618'FWL,SEC.18)		

WELLPATH DATA (177 stations) † = interpolated, ‡ = extrapolated station

MD [ft]	Inclination [°]	Azimuth [°]	TVD [ft]	Vert Sect [ft]	North [ft]	East [ft]	Grid East [US ft]	Grid North [US ft]	Latitude	Longitude	DLS [°/100ft]	Comments
2723.00†	21.610	103.467	2599.69	-25.67	-166.32	694.55	3315632.44	1356128.27	40.3054434	-104.3682598	0.00	
2823.00†	21.610	103.467	2692.66	-27.00	-174.90	730.37	3315668.36	1356120.15	40.3054199	-104.3681314	0.00	
2923.00†	21.610	103.467	2785.63	-28.32	-183.47	766.19	3315704.28	1356112.03	40.3053963	-104.3680029	0.00	
3023.00†	21.610	103.467	2878.61	-29.64	-192.05	802.00	3315740.20	1356103.91	40.3053728	-104.3678745	0.00	
3123.00†	21.610	103.467	2971.58	-30.97	-200.63	837.82	3315776.12	1356095.80	40.3053492	-104.3677461	0.00	
3223.00†	21.610	103.467	3064.55	-32.29	-209.20	873.63	3315812.04	1356087.68	40.3053257	-104.3676177	0.00	
3323.00†	21.610	103.467	3157.52	-33.61	-217.78	909.45	3315847.96	1356079.56	40.3053022	-104.3674893	0.00	
3423.00†	21.610	103.467	3250.49	-34.94	-226.36	945.26	3315883.88	1356071.44	40.3052786	-104.3673609	0.00	
3523.00†	21.610	103.467	3343.46	-36.26	-234.93	981.08	3315919.80	1356063.32	40.3052551	-104.3672325	0.00	
3623.00†	21.610	103.467	3436.43	-37.59	-243.51	1016.89	3315955.72	1356055.20	40.3052315	-104.3671041	0.00	
3723.00†	21.610	103.467	3529.41	-38.91	-252.09	1052.71	3315991.64	1356047.08	40.3052080	-104.3669757	0.00	
3823.00†	21.610	103.467	3622.38	-40.23	-260.66	1088.52	3316027.56	1356038.96	40.3051844	-104.3668473	0.00	
3923.00†	21.610	103.467	3715.35	-41.56	-269.24	1124.34	3316063.48	1356030.84	40.3051609	-104.3667188	0.00	
4023.00†	21.610	103.467	3808.32	-42.88	-277.82	1160.16	3316099.40	1356022.72	40.3051373	-104.3665904	0.00	
4123.00†	21.610	103.467	3901.29	-44.20	-286.39	1195.97	3316135.32	1356014.60	40.3051138	-104.3664620	0.00	
4223.00†	21.610	103.467	3994.26	-45.53	-294.97	1231.79	3316171.24	1356006.48	40.3050902	-104.3663336	0.00	
4323.00†	21.610	103.467	4087.24	-46.85	-303.55	1267.60	3316207.16	1355998.36	40.3050667	-104.3662052	0.00	
4423.00†	21.610	103.467	4180.21	-48.18	-312.12	1303.42	3316243.08	1355990.24	40.3050431	-104.3660768	0.00	
4523.00†	21.610	103.467	4273.18	-49.50	-320.70	1339.23	3316279.00	1355982.12	40.3050196	-104.3659484	0.00	
4623.00†	21.610	103.467	4366.15	-50.82	-329.28	1375.05	3316314.92	1355974.00	40.3049960	-104.3658200	0.00	
4723.00†	21.610	103.467	4459.12	-52.15	-337.85	1410.86	3316350.84	1355965.88	40.3049725	-104.3656916	0.00	
4823.00†	21.610	103.467	4552.09	-53.47	-346.43	1446.68	3316386.76	1355957.76	40.3049490	-104.3655632	0.00	
4923.00†	21.610	103.467	4645.06	-54.79	-355.01	1482.49	3316422.68	1355949.65	40.3049254	-104.3654347	0.00	
5023.00†	21.610	103.467	4738.04	-56.12	-363.58	1518.31	3316458.60	1355941.53	40.3049019	-104.3653063	0.00	
5123.00†	21.610	103.467	4831.01	-57.44	-372.16	1554.13	3316494.52	1355933.41	40.3048783	-104.3651779	0.00	
5223.00†	21.610	103.467	4923.98	-58.77	-380.74	1589.94	3316530.44	1355925.29	40.3048548	-104.3650495	0.00	
5323.00†	21.610	103.467	5016.95	-60.09	-389.31	1625.76	3316566.36	1355917.17	40.3048312	-104.3649211	0.00	
5423.00†	21.610	103.467	5109.92	-61.41	-397.89	1661.57	3316602.28	1355909.05	40.3048077	-104.3647927	0.00	
5523.00†	21.610	103.467	5202.89	-62.74	-406.47	1697.39	3316638.20	1355900.93	40.3047841	-104.3646643	0.00	
5623.00†	21.610	103.467	5295.86	-64.06	-415.04	1733.20	3316674.12	1355892.81	40.3047606	-104.3645359	0.00	

REFERENCE WELLPATH IDENTIFICATION

Operator	CONFLUENCE RESOURCES	Well	Middlepark 18-5-3L
Field	WELD COUNTY (NAD83, TRUE NORTH)	API	0512347460
Facility	SEC.18-T04N-R62W	Wellbore	Middlepark 18-5-3L PWB
Slot	SLOT#04 Middlepark 18-5-3L (261'FSL & 1618'FWL,SEC.18)		

WELLPATH DATA (177 stations) † = interpolated, ‡ = extrapolated station

MD [ft]	Inclination [°]	Azimuth [°]	TVD [ft]	Vert Sect [ft]	North [ft]	East [ft]	Grid East [US ft]	Grid North [US ft]	Latitude	Longitude	DLS [°/100ft]	Comments
5723.00†	21.610	103.467	5388.84	-65.38	-423.62	1769.02	3316710.04	1355884.69	40.3047370	-104.3644075	0.00	
5823.00†	21.610	103.467	5481.81	-66.71	-432.20	1804.83	3316745.96	1355876.57	40.3047135	-104.3642791	0.00	
5923.00†	21.610	103.467	5574.78	-68.03	-440.77	1840.65	3316781.88	1355868.45	40.3046899	-104.3641507	0.00	
6023.00†	21.610	103.467	5667.75	-69.36	-449.35	1876.47	3316817.80	1355860.33	40.3046664	-104.3640223	0.00	
6070.27	21.610	103.467	5711.70	-69.98	-453.40	1893.40	3316834.79	1355856.49	40.3046552	-104.3639616	0.00	KOP
6123.00†	20.968	90.491	5760.86	-68.54	-455.75	1912.28	3316853.70	1355854.39	40.3046488	-104.3638938	9.00	
6223.00†	22.495	66.368	5853.93	-54.14	-448.22	1947.77	3316889.09	1355862.37	40.3046695	-104.3637666	9.00	
6323.00†	26.963	47.550	5944.88	-24.79	-425.20	1982.10	3316923.12	1355885.82	40.3047326	-104.3636435	9.00	
6423.00†	33.202	34.525	6031.46	18.79	-387.26	2014.41	3316954.94	1355924.17	40.3048368	-104.3635277	9.00	
6523.00†	40.397	25.453	6111.54	75.52	-335.34	2043.92	3316983.78	1355976.46	40.3049793	-104.3634219	9.00	
6623.00†	48.113	18.793	6183.15	144.01	-270.71	2069.89	3317008.93	1356041.41	40.3051567	-104.3633287	9.00	
6723.00†	56.130	13.600	6244.53	222.57	-194.96	2091.69	3317029.76	1356117.43	40.3053646	-104.3632505	9.00	
6823.00†	64.328	9.311	6294.15	309.27	-109.97	2108.77	3317045.76	1356202.63	40.3055979	-104.3631892	9.00	
6923.00†	72.634	5.582	6330.81	401.97	-17.81	2120.73	3317056.54	1356294.92	40.3058509	-104.3631463	9.00	
7023.00†	81.003	2.179	6353.60	498.39	79.23	2127.26	3317061.84	1356392.04	40.3061172	-104.3631229	9.00	
7123.00†	89.402	358.931	6361.96	596.15	178.77	2128.21	3317061.52	1356491.58	40.3063905	-104.3631195	9.00	
7130.12	90.000	358.702	6362.00†	603.09	185.89	2128.06	3317061.28	1356498.69	40.3064100	-104.3631200	9.00	LANDING
7223.00†	90.000	358.702	6362.00	693.70	278.75	2125.96	3317057.99	1356591.51	40.3066649	-104.3631275	0.00	
7323.00†	90.000	358.702	6362.00	791.25	378.72	2123.69	3317054.46	1356691.45	40.3069393	-104.3631356	0.00	
7423.00†	90.000	358.702	6362.00	888.81	478.70	2121.43	3317050.92	1356791.38	40.3072137	-104.3631437	0.00	
7523.00†	90.000	358.702	6362.00	986.36	578.67	2119.16	3317047.38	1356891.31	40.3074882	-104.3631518	0.00	
7623.00†	90.000	358.702	6362.00	1083.91	678.65	2116.89	3317043.84	1356991.25	40.3077626	-104.3631599	0.00	
7723.00†	90.000	358.702	6362.00	1181.46	778.62	2114.63	3317040.30	1357091.18	40.3080370	-104.3631680	0.00	
7823.00†	90.000	358.702	6362.00	1279.01	878.59	2112.36	3317036.76	1357191.11	40.3083114	-104.3631761	0.00	
7923.00†	90.000	358.702	6362.00	1376.56	978.57	2110.10	3317033.22	1357291.04	40.3085859	-104.3631842	0.00	
8023.00†	90.000	358.702	6362.00	1474.11	1078.54	2107.83	3317029.68	1357390.98	40.3088603	-104.3631923	0.00	
8123.00†	90.000	358.702	6362.00	1571.67	1178.52	2105.56	3317026.15	1357490.91	40.3091347	-104.3632004	0.00	
8223.00†	90.000	358.702	6362.00	1669.22	1278.49	2103.30	3317022.61	1357590.84	40.3094091	-104.3632085	0.00	
8323.00†	90.000	358.702	6362.00	1766.77	1378.47	2101.03	3317019.07	1357690.78	40.3096836	-104.3632166	0.00	
8423.00†	90.000	358.702	6362.00	1864.32	1478.44	2098.77	3317015.53	1357790.71	40.3099580	-104.3632246	0.00	

REFERENCE WELLPATH IDENTIFICATION

Operator	CONFLUENCE RESOURCES	Well	Middlepark 18-5-3L
Field	WELD COUNTY (NAD83, TRUE NORTH)	API	0512347460
Facility	SEC.18-T04N-R62W	Wellbore	Middlepark 18-5-3L PWB
Slot	SLOT#04 Middlepark 18-5-3L (261'FSL & 1618'FWL,SEC.18)		

WELLPATH DATA (177 stations) † = interpolated, ‡ = extrapolated station

MD [ft]	Inclination [°]	Azimuth [°]	TVD [ft]	Vert Sect [ft]	North [ft]	East [ft]	Grid East [US ft]	Grid North [US ft]	Latitude	Longitude	DLS [°/100ft]	Comments
8523.00†	90.000	358.702	6362.00	1961.87	1578.41	2096.50	3317011.99	1357890.64	40.3102324	-104.3632327	0.00	
8623.00†	90.000	358.702	6362.00	2059.42	1678.39	2094.23	3317008.45	1357990.57	40.3105068	-104.3632408	0.00	
8723.00†	90.000	358.702	6362.00	2156.97	1778.36	2091.97	3317004.91	1358090.51	40.3107813	-104.3632489	0.00	
8823.00†	90.000	358.702	6362.00	2254.53	1878.34	2089.70	3317001.38	1358190.44	40.3110557	-104.3632570	0.00	
8923.00†	90.000	358.702	6362.00	2352.08	1978.31	2087.44	3316997.84	1358290.37	40.3113301	-104.3632651	0.00	
9023.00†	90.000	358.702	6362.00	2449.63	2078.29	2085.17	3316994.30	1358390.31	40.3116045	-104.3632732	0.00	
9123.00†	90.000	358.702	6362.00	2547.18	2178.26	2082.91	3316990.76	1358490.24	40.3118790	-104.3632813	0.00	
9223.00†	90.000	358.702	6362.00	2644.73	2278.24	2080.64	3316987.22	1358590.17	40.3121534	-104.3632894	0.00	
9323.00†	90.000	358.702	6362.00	2742.28	2378.21	2078.37	3316983.68	1358690.11	40.3124278	-104.3632975	0.00	
9423.00†	90.000	358.702	6362.00	2839.83	2478.18	2076.11	3316980.14	1358790.04	40.3127022	-104.3633056	0.00	
9523.00†	90.000	358.702	6362.00	2937.39	2578.16	2073.84	3316976.60	1358889.97	40.3129767	-104.3633137	0.00	
9623.00†	90.000	358.702	6362.00	3034.94	2678.13	2071.58	3316973.07	1358989.90	40.3132511	-104.3633218	0.00	
9723.00†	90.000	358.702	6362.00	3132.49	2778.11	2069.31	3316969.53	1359089.84	40.3135255	-104.3633299	0.00	
9823.00†	90.000	358.702	6362.00	3230.04	2878.08	2067.04	3316965.99	1359189.77	40.3137999	-104.3633380	0.00	
9923.00†	90.000	358.702	6362.00	3327.59	2978.06	2064.78	3316962.45	1359289.70	40.3140744	-104.3633461	0.00	
10023.00†	90.000	358.702	6362.00	3425.14	3078.03	2062.51	3316958.91	1359389.64	40.3143488	-104.3633542	0.00	
10123.00†	90.000	358.702	6362.00	3522.69	3178.00	2060.25	3316955.37	1359489.57	40.3146232	-104.3633623	0.00	
10223.00†	90.000	358.702	6362.00	3620.25	3277.98	2057.98	3316951.83	1359589.50	40.3148976	-104.3633704	0.00	
10323.00†	90.000	358.702	6362.00	3717.80	3377.95	2055.71	3316948.29	1359689.43	40.3151720	-104.3633784	0.00	
10423.00†	90.000	358.702	6362.00	3815.35	3477.93	2053.45	3316944.76	1359789.37	40.3154465	-104.3633865	0.00	
10523.00†	90.000	358.702	6362.00	3912.90	3577.90	2051.18	3316941.22	1359889.30	40.3157209	-104.3633946	0.00	
10623.00†	90.000	358.702	6362.00	4010.45	3677.88	2048.92	3316937.68	1359989.23	40.3159953	-104.3634027	0.00	
10723.00†	90.000	358.702	6362.00	4108.00	3777.85	2046.65	3316934.14	1360089.17	40.3162697	-104.3634108	0.00	
10823.00†	90.000	358.702	6362.00	4205.56	3877.82	2044.38	3316930.60	1360189.10	40.3165442	-104.3634189	0.00	
10923.00†	90.000	358.702	6362.00	4303.11	3977.80	2042.12	3316927.06	1360289.03	40.3168186	-104.3634270	0.00	
11023.00†	90.000	358.702	6362.00	4400.66	4077.77	2039.85	3316923.52	1360388.96	40.3170930	-104.3634351	0.00	
11123.00†	90.000	358.702	6362.00	4498.21	4177.75	2037.59	3316919.98	1360488.90	40.3173674	-104.3634432	0.00	
11223.00†	90.000	358.702	6362.00	4595.76	4277.72	2035.32	3316916.45	1360588.83	40.3176419	-104.3634513	0.00	
11323.00†	90.000	358.702	6362.00	4693.31	4377.70	2033.05	3316912.91	1360688.76	40.3179163	-104.3634594	0.00	
11423.00†	90.000	358.702	6362.00	4790.86	4477.67	2030.79	3316909.37	1360788.70	40.3181907	-104.3634675	0.00	

Planned Wellpath Report

Middlepark 18-5-3L PWP Rev-A.0

Page 6 of 10

REFERENCE WELLPATH IDENTIFICATION			
Operator	CONFLUENCE RESOURCES	Well	Middlepark 18-5-3L
Field	WELD COUNTY (NAD83, TRUE NORTH)	API	0512347460
Facility	SEC.18-T04N-R62W	Wellbore	Middlepark 18-5-3L PWB
Slot	SLOT#04 Middlepark 18-5-3L (261'FSL & 1618'FWL,SEC.18)		

WELLPATH DATA (177 stations) † = interpolated, ‡ = extrapolated station

MD [ft]	Inclination [°]	Azimuth [°]	TVD [ft]	Vert Sect [ft]	North [ft]	East [ft]	Grid East [US ft]	Grid North [US ft]	Latitude	Longitude	DLS [°/100ft]	Comments
11523.00†	90.000	358.702	6362.00	4888.42	4577.64	2028.52	3316905.83	1360888.63	40.3184651	-104.3634756	0.00	
11623.00†	90.000	358.702	6362.00	4985.97	4677.62	2026.26	3316902.29	1360988.56	40.3187396	-104.3634837	0.00	
11723.00†	90.000	358.702	6362.00	5083.52	4777.59	2023.99	3316898.75	1361088.49	40.3190140	-104.3634918	0.00	
11823.00†	90.000	358.702	6362.00	5181.07	4877.57	2021.73	3316895.21	1361188.43	40.3192884	-104.3634999	0.00	
11923.00†	90.000	358.702	6362.00	5278.62	4977.54	2019.46	3316891.68	1361288.36	40.3195628	-104.3635080	0.00	
12023.00†	90.000	358.702	6362.00	5376.17	5077.52	2017.19	3316888.14	1361388.29	40.3198373	-104.3635161	0.00	
12071.37	90.000	358.702	6362.00‡	5423.36	5125.88	2016.10	3316886.42	1361436.63	40.3199700	-104.3635200	0.00	TP1
12122.90	90.000	359.732	6362.00	5473.72	5177.40	2015.39	3316885.06	1361488.14	40.3201114	-104.3635225	2.00	3D Arc (J)
12123.00†	90.000	359.732	6362.00	5473.82	5177.50	2015.39	3316885.06	1361488.24	40.3201117	-104.3635225	0.00	
12223.00†	90.000	359.732	6362.00	5571.75	5277.50	2014.92	3316883.32	1361588.22	40.3203862	-104.3635242	0.00	
12323.00†	90.000	359.732	6362.00	5669.69	5377.50	2014.46	3316881.58	1361688.20	40.3206607	-104.3635258	0.00	
12423.00†	90.000	359.732	6362.00	5767.62	5477.50	2013.99	3316879.84	1361788.18	40.3209352	-104.3635275	0.00	
12523.00†	90.000	359.732	6362.00	5865.55	5577.49	2013.52	3316878.10	1361888.16	40.3212097	-104.3635291	0.00	
12623.00†	90.000	359.732	6362.00	5963.48	5677.49	2013.05	3316876.36	1361988.14	40.3214842	-104.3635307	0.00	
12723.00†	90.000	359.732	6362.00	6061.41	5777.49	2012.59	3316874.62	1362088.12	40.3217586	-104.3635324	0.00	
12823.00†	90.000	359.732	6362.00	6159.34	5877.49	2012.12	3316872.88	1362188.10	40.3220331	-104.3635340	0.00	
12923.00†	90.000	359.732	6362.00	6257.27	5977.49	2011.65	3316871.14	1362288.08	40.3223076	-104.3635357	0.00	
13023.00†	90.000	359.732	6362.00	6355.20	6077.49	2011.18	3316869.40	1362388.06	40.3225821	-104.3635373	0.00	
13123.00†	90.000	359.732	6362.00	6453.14	6177.49	2010.72	3316867.65	1362488.04	40.3228566	-104.3635390	0.00	
13223.00†	90.000	359.732	6362.00	6551.07	6277.49	2010.25	3316865.91	1362588.02	40.3231311	-104.3635406	0.00	
13323.00†	90.000	359.732	6362.00	6649.00	6377.49	2009.78	3316864.17	1362688.00	40.3234056	-104.3635423	0.00	
13423.00†	90.000	359.732	6362.00	6746.93	6477.48	2009.31	3316862.43	1362787.98	40.3236801	-104.3635439	0.00	
13523.00†	90.000	359.732	6362.00	6844.86	6577.48	2008.85	3316860.69	1362887.97	40.3239546	-104.3635456	0.00	
13623.00†	90.000	359.732	6362.00	6942.79	6677.48	2008.38	3316858.95	1362987.95	40.3242291	-104.3635472	0.00	
13723.00†	90.000	359.732	6362.00	7040.72	6777.48	2007.91	3316857.21	1363087.93	40.3245035	-104.3635489	0.00	
13823.00†	90.000	359.732	6362.00	7138.65	6877.48	2007.44	3316855.47	1363187.91	40.3247780	-104.3635505	0.00	
13923.00†	90.000	359.732	6362.00	7236.59	6977.48	2006.98	3316853.73	1363287.89	40.3250525	-104.3635522	0.00	
14023.00†	90.000	359.732	6362.00	7334.52	7077.48	2006.51	3316851.99	1363387.87	40.3253270	-104.3635538	0.00	
14123.00†	90.000	359.732	6362.00	7432.45	7177.48	2006.04	3316850.25	1363487.85	40.3256015	-104.3635555	0.00	
14223.00†	90.000	359.732	6362.00	7530.38	7277.48	2005.57	3316848.51	1363587.83	40.3258760	-104.3635571	0.00	

Planned Wellpath Report

Middlepark 18-5-3L PWP Rev-A.0

Page 7 of 10

REFERENCE WELLPATH IDENTIFICATION

Operator	CONFLUENCE RESOURCES	Well	Middlepark 18-5-3L
Field	WELD COUNTY (NAD83, TRUE NORTH)	API	0512347460
Facility	SEC.18-T04N-R62W	Wellbore	Middlepark 18-5-3L PWB
Slot	SLOT#04 Middlepark 18-5-3L (261'FSL & 1618'FWL,SEC.18)		

WELLPATH DATA (177 stations) † = interpolated, ‡ = extrapolated station

MD [ft]	Inclination [°]	Azimuth [°]	TVD [ft]	Vert Sect [ft]	North [ft]	East [ft]	Grid East [US ft]	Grid North [US ft]	Latitude	Longitude	DLS [°/100ft]	Comments
14323.00†	90.000	359.732	6362.00	7628.31	7377.47	2005.11	3316846.76	1363687.81	40.3261505	-104.3635588	0.00	
14423.00†	90.000	359.732	6362.00	7726.24	7477.47	2004.64	3316845.02	1363787.79	40.3264250	-104.3635604	0.00	
14523.00†	90.000	359.732	6362.00	7824.17	7577.47	2004.17	3316843.28	1363887.77	40.3266995	-104.3635621	0.00	
14623.00†	90.000	359.732	6362.00	7922.10	7677.47	2003.70	3316841.54	1363987.75	40.3269740	-104.3635637	0.00	
14723.00†	90.000	359.732	6362.00	8020.03	7777.47	2003.24	3316839.80	1364087.73	40.3272485	-104.3635654	0.00	
14823.00†	90.000	359.732	6362.00	8117.97	7877.47	2002.77	3316838.06	1364187.71	40.3275229	-104.3635670	0.00	
14923.00†	90.000	359.732	6362.00	8215.90	7977.47	2002.30	3316836.32	1364287.69	40.3277974	-104.3635686	0.00	
15023.00†	90.000	359.732	6362.00	8313.83	8077.47	2001.83	3316834.58	1364387.67	40.3280719	-104.3635703	0.00	
15123.00†	90.000	359.732	6362.00	8411.76	8177.47	2001.37	3316832.84	1364487.65	40.3283464	-104.3635719	0.00	
15223.00†	90.000	359.732	6362.00	8509.69	8277.46	2000.90	3316831.10	1364587.63	40.3286209	-104.3635736	0.00	
15323.00†	90.000	359.732	6362.00	8607.62	8377.46	2000.43	3316829.36	1364687.61	40.3288954	-104.3635752	0.00	
15423.00†	90.000	359.732	6362.00	8705.55	8477.46	1999.96	3316827.61	1364787.59	40.3291699	-104.3635769	0.00	
15523.00†	90.000	359.732	6362.00	8803.48	8577.46	1999.50	3316825.87	1364887.57	40.3294444	-104.3635785	0.00	
15623.00†	90.000	359.732	6362.00	8901.42	8677.46	1999.03	3316824.13	1364987.55	40.3297189	-104.3635802	0.00	
15723.00†	90.000	359.732	6362.00	8999.35	8777.46	1998.56	3316822.39	1365087.53	40.3299934	-104.3635818	0.00	
15823.00†	90.000	359.732	6362.00	9097.28	8877.46	1998.09	3316820.65	1365187.51	40.3302678	-104.3635835	0.00	
15923.00†	90.000	359.732	6362.00	9195.21	8977.46	1997.63	3316818.91	1365287.49	40.3305423	-104.3635851	0.00	
16023.00†	90.000	359.732	6362.00	9293.14	9077.46	1997.16	3316817.17	1365387.47	40.3308168	-104.3635868	0.00	
16123.00†	90.000	359.732	6362.00	9391.07	9177.45	1996.69	3316815.43	1365487.46	40.3310913	-104.3635884	0.00	
16223.00†	90.000	359.732	6362.00	9489.00	9277.45	1996.22	3316813.69	1365587.44	40.3313658	-104.3635901	0.00	
16323.00†	90.000	359.732	6362.00	9586.93	9377.45	1995.76	3316811.95	1365687.42	40.3316403	-104.3635917	0.00	
16423.00†	90.000	359.732	6362.00	9684.87	9477.45	1995.29	3316810.21	1365787.40	40.3319148	-104.3635934	0.00	
16523.00†	90.000	359.732	6362.00	9782.80	9577.45	1994.82	3316808.47	1365887.38	40.3321893	-104.3635950	0.00	
16623.00†	90.000	359.732	6362.00	9880.73	9677.45	1994.35	3316806.72	1365987.36	40.3324638	-104.3635967	0.00	
16723.00†	90.000	359.732	6362.00	9978.66	9777.45	1993.89	3316804.98	1366087.34	40.3327383	-104.3635983	0.00	
16823.00†	90.000	359.732	6362.00	10076.59	9877.45	1993.42	3316803.24	1366187.32	40.3330127	-104.3636000	0.00	
16825.64	90.000	359.732	6362.00 ³	10079.18	9880.09	1993.41	3316803.20	1366189.96	40.3330200	-104.3636000	0.00	TD

Planned Wellpath Report

Middlepark 18-5-3L PWP Rev-A.0

Page 8 of 10

REFERENCE WELLPATH IDENTIFICATION

Operator	CONFLUENCE RESOURCES	Well	Middlepark 18-5-3L
Field	WELD COUNTY (NAD83, TRUE NORTH)	API	0512347460
Facility	SEC.18-T04N-R62W	Wellbore	Middlepark 18-5-3L PWB
Slot	SLOT#04 Middlepark 18-5-3L (261'FSL & 1618'FWL,SEC.18)		

HOLE & CASING SECTIONS

- Ref Wellbore: Middlepark 18-5-3L PWB Ref Wellpath: Middlepark 18-5-3L PWP Rev-A.0

String/Diameter	Start MD [ft]	End MD [ft]	Interval [ft]	Start TVD [ft]	End TVD [ft]	Start N/S [ft]	Start E/W [ft]	End N/S [ft]	End E/W [ft]
9.625in Casing Surface	23.00	1701.51	1678.51	23.00	1650.00	0.00	0.00	-78.71	328.70

TARGETS

Name	MD [ft]	TVD [ft]	North [ft]	East [ft]	Grid East [US ft]	Grid North [US ft]	Latitude	Longitude	Shape
SEC.07-T04N-R62W	N/A	0.00	-58.29	47.41	3314984.00	1356228.05	40.3057400	-104.3705800	polygon
	2D Polygon: dimensions not calculated								
SEC.07/18-T04N-R62W (SB 470')	N/A	0.00	-58.29	47.41	3314984.00	1356228.05	40.3057400	-104.3705800	polygon
	2D Polygon: dimensions not calculated								
SEC.18-T04N-R62W	N/A	0.00	-58.29	47.41	3314984.00	1356228.05	40.3057400	-104.3705800	polygon
	2D Polygon: dimensions not calculated								
3) Middlepark 18-5-3L BHL REV-1 (470'FNL & 1350'FEL,SEC.07)	16825.64	6362.00	9880.09	1993.41	3316803.20	1366189.96	40.3330200	-104.3636000	point
1) Middlepark 18-5-3L LP REV-1 (470'FSL & 1613'FEL,SEC.18)	7130.12	6362.00	185.89	2128.06	3317061.28	1356498.69	40.3064100	-104.3631200	point
2) Middlepark 18-5-3L TP1 REV-1 (0'FNL & 1570'FEL,SEC.18)	12071.37	6362.00	5125.88	2016.10	3316886.42	1361436.63	40.3199700	-104.3635200	point

Planned Wellpath Report

Middlepark 18-5-3L PWP Rev-A.0

Page 9 of 10

REFERENCE WELLPATH IDENTIFICATION

Operator	CONFLUENCE RESOURCES	Well	Middlepark 18-5-3L
Field	WELD COUNTY (NAD83, TRUE NORTH)	API	0512347460
Facility	SEC.18-T04N-R62W	Wellbore	Middlepark 18-5-3L PWB
Slot	SLOT#04 Middlepark 18-5-3L (261'FSL & 1618'FWL,SEC.18)		

SURVEY PROGRAM - Ref Wellbore: Middlepark 18-5-3L PWB Ref Wellpath: Middlepark 18-5-3L PWP Rev-A.0

Start MD [ft]	End MD [ft]	Positional Uncertainty Model	Log Name/Comment	Wellbore
23.00	1701.51	BH NaviTrak (2019) (Axial)		Middlepark 18-5-3L PWB
1701.51	16825.64	BH AutoTrak Curve/eXpress (2019) (Short spacing)		Middlepark 18-5-3L PWB

Planned Wellpath Report

Middlepark 18-5-3L PWP Rev-A.0

Page 10 of 10

REFERENCE WELLPATH IDENTIFICATION

Operator	CONFLUENCE RESOURCES	Well	Middlepark 18-5-3L
Field	WELD COUNTY (NAD83, TRUE NORTH)	API	0512347460
Facility	SEC.18-T04N-R62W	Wellbore	Middlepark 18-5-3L PWB
Slot	SLOT#04 Middlepark 18-5-3L (261'FSL & 1618'FWL,SEC.18)		

DESIGN COMMENTS

MD [ft]	Inclination [°]	Azimuth [°]	TVD [ft]	Comment
23.00	0.000	103.467	23.00	Tie On
250.00	0.000	103.467	250.00	End of Tangent
1330.48	21.610	103.467	1305.05	Build (XS)
6070.27	21.610	103.467	5711.70	KOP
7130.12	90.000	358.702	6362.00	LANDING
12071.37	90.000	358.702	6362.00	TP1
12122.90	90.000	359.732	6362.00	3D Arc (J)
16825.64	90.000	359.732	6362.00	TD