



# RADIAL CEMENT BOND LOG

Company KINDER MORGAN  
 Well FLANK #6  
 Field FLANK  
 County BACA  
 State CO

Company KINDER MORGAN  
 Well FLANK #6  
 Field FLANK  
 County BACA State CO

Location: API #: 05-009-05068-00  
 Permanent Datum SEC 4 TWP 34S RGE 42W  
 Log Measured From GROUND LEVEL Elevation 3758'  
 Drilling Measured From KELLY BUSHING  
 KELLY BUSHING  
 Other Services  
 Elevation  
 K.B. 3768'  
 D.F. 3767'  
 G.L. 3758'

Date	12/03/2021
Run Number	ONE
Depth Driller	4740'
Depth Logger	825'
Bottom Logged Interval	825'
Top Log Interval	245'
Casing Driller	N/A
Casing Logger	N/A
Bit Size	N/A
Type Fluid in Hole	WATER
Density / Viscosity	N/A
pH / Fluid Loss	N/A
Source of Sample	N/A
Rm @ Meas. Temp	N/A
Rmf @ Meas. Temp	N/A
Rmc @ Meas. Temp	N/A
Source of Rmf / Rmc	N/A
Rm @ BHT	N/A
Time Circulation Stopped	N/A
Time Logger on Bottom	1:30 PM
Maximum Recorded Temperature	N/A
Equipment Number	HU146
Location	WOODWARD, OK
Recorded By	T. DUNKIN
Witnessed By	C. MYERS

<<< Fold Here >>>

All interpretations are opinions based on inferences from electrical or other measurements and we cannot and do not guarantee the accuracy or correctness of any interpretation, and we shall not, except in the case of gross or willful negligence on our part, be liable or responsible for any loss, costs, damages, or expenses incurred or sustained by anyone resulting from any interpretation made by any of our officers, agents or employees. These interpretations are also subject to our general terms and conditions set out in our current Price Schedule.

### Comments

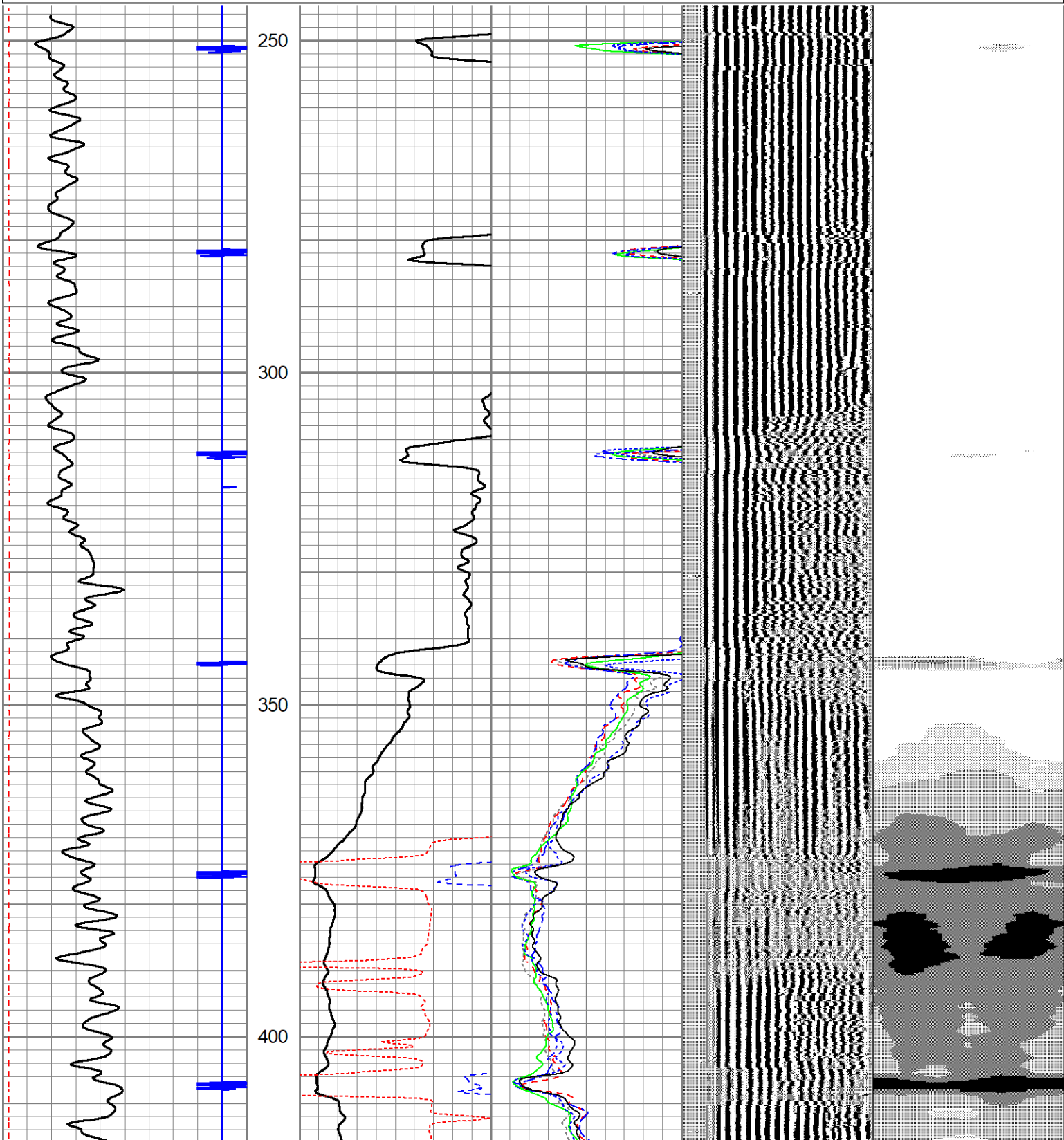
LOG MEASURED FROM GROUND LEVEL

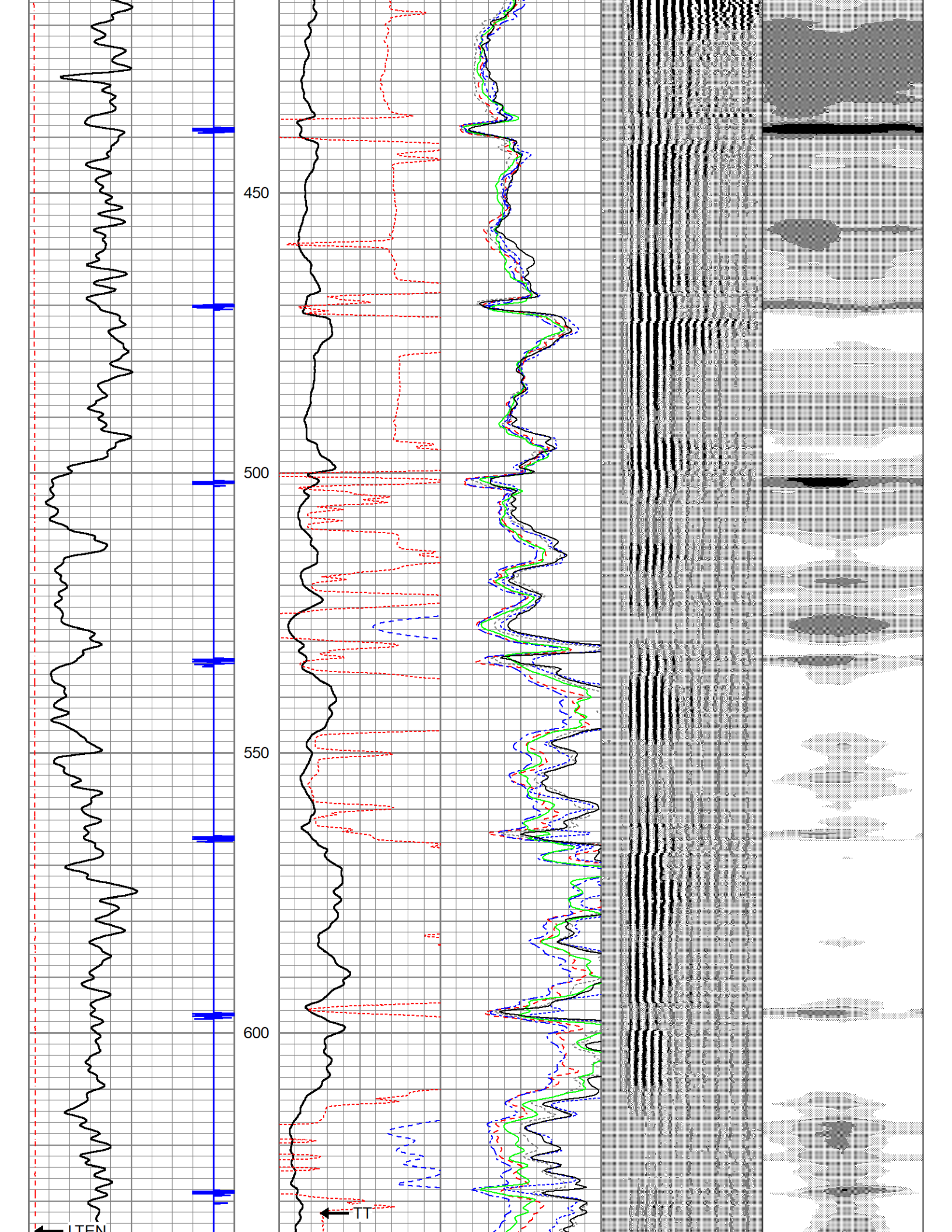


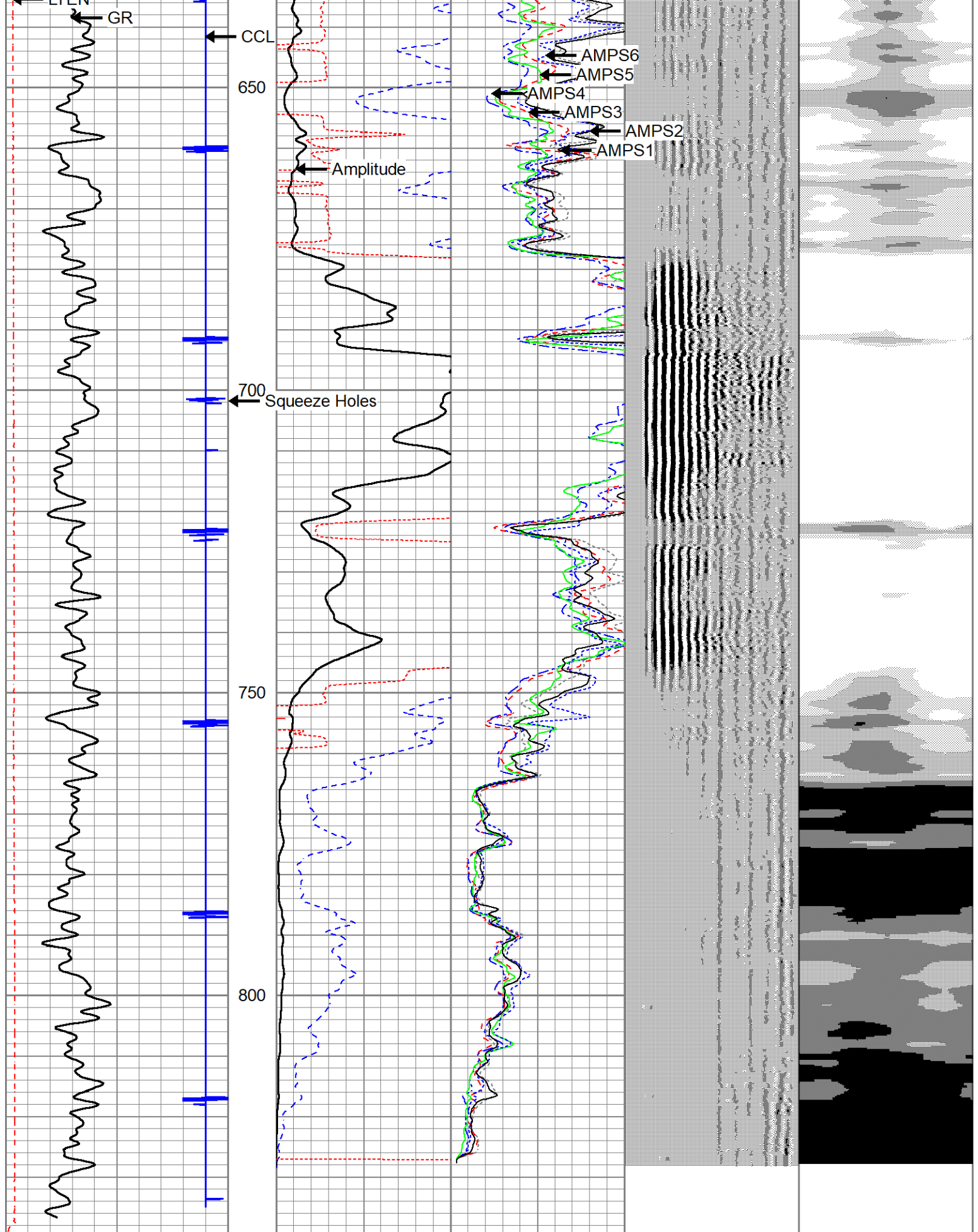
# MAIN PASS

Database File kindermorgan12321\_bond.db  
 Dataset Pathname pass3  
 Presentation Format chrslrbl  
 Dataset Creation Fri Dec 03 13:33:38 2021  
 Charted by Depth in Feet scaled 1:240

CCL			0	Amplitude (mV)	200	-5	AMPS2	150	200	VDL (usec)	1200	Cement Map
0	GR (GAPI)	150	Amplified Amplitude		-5	AMPS3	150					
0	LTEN (lb)	4000	0	(mV)	20	-5	AMPS4	150				
			330	TT (usec)	230	-5	AMPS5	150				
					-5	AMPS6	150					
					-5	AMPS1	150					







CCL		
0	GR (GAPI)	150
0	LTEN (lb)	4000

0	Amplitude (mV)	200	-5	AMPS2	150
0	Amplified Amplitude	20	-5	AMPS3	150
0	(mV)	20	-5	AMPS4	150

200	VDL (usec)	1200
-----	------------	------

Cement Map	
------------	--

330	TT (usec)	230	-5	AMPS5	150
			-5	AMPS6	150
			-5	AMPS1	150

Sensor	Offset (ft)	Schematic	Description	Length (ft)	O.D. (in)	Weight (lb)
			CHD-1.6875CHD	1.00	1.69	10.00
CCL	5.24					
			Dual-2 (001) Titan 2 3/4 DF GG	6.57	2.75	30.00
GR	1.69					

Dataset: kindermorgan\_flank6.db: field/well/run1/pass3  
 Total length: 7.57 ft  
 Total weight: 40.00 lb  
 O.D.: 2.75 in