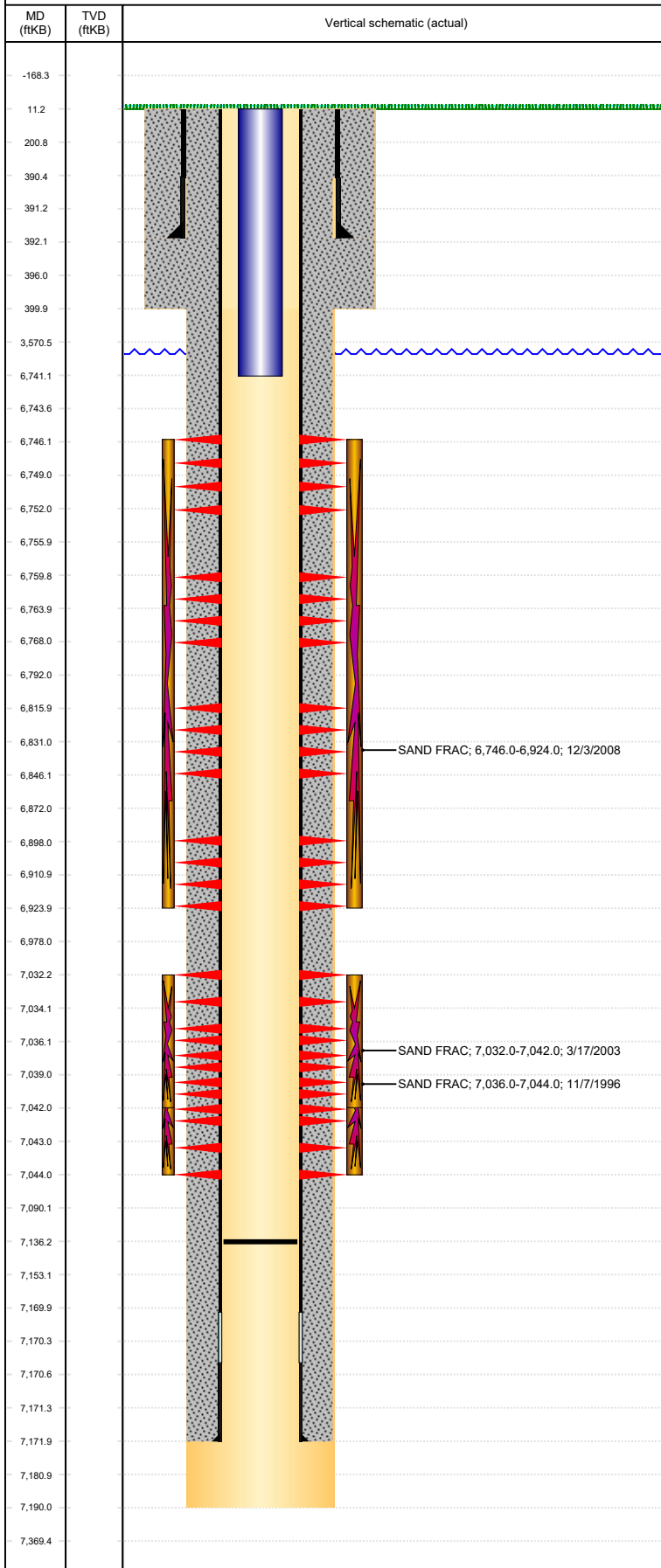


Well Name: FRANK 13-21

VERTICAL, ORIGINAL HOLE, 2/15/2022 9:19:47 AM



Well Header

API 05-123-19206	Business Unit DJ BASIN	District 15	Well Config VERTICAL
Original KB Elevation (ft) 4,746	KB - GL / MSL (ftKB) 11.00	Spud Date 10/19/1996	P & A Date

Comment
PROD CSG WEIGHT/LENGTH: 12.6# & 13.5#. CBL TOP LOGGED INT. 3950' & SHOWING CMT THERE; ST HAS TOC @ SURFACE. NO NIOB FRAC INFORMATION IN FILE, USED DAILY REPORTS AND STATE FORM.

Directions To Well

Congressional Location

Quarter 3 NE	Quarter 4 NW	Section 13	Township 4	TwNS Dir N	Range 65	Range E/W Dir W
-----------------	-----------------	---------------	---------------	---------------	-------------	--------------------

Bottom Hole Legal Location

Bottom Hole Legal Location

Plug Back Total Depths

Date	Depth (ftKB)	Method	Com
10/23/1996	7,144.0	CASING TALLY	TOP OF FLOAT COLLAR
10/30/1996	7,093.0	CASED HOLE LOG	DEPTH LOGGER ON CBL
11/13/2008	7,136.0	TAG	CLEAN OUT

Wellbore Sections

Section Des	Size (in)	Act Top, MD (ftKB)	Act Btm, MD (ftKB)
SURFACE	12 1/4	11	400
PRODUCTION	7 7/8	400	7,190

Zone Statuses

Zone Name	Status Date	Status	Fluid Type	Job	Prod Method
CODELL	11/13/1996	PR	Water	DRILLING/CO...	Flowing
CODELL	3/22/2003	PR	Water	RE-FRAC, 3/12...	Flowing
CODELL	11/14/2008	TA	Water	RECOMPLETI...	
CODELL	1/7/2009	PR	Water	RECOMPLETI...	Flowing
CODELL	4/22/2010	PR	Water		Flowing
NIOBRARA	12/11/2008	PR		RECOMPLETI...	Flowing
NIOBRARA	1/7/2009	PR		RECOMPLETI...	Flowing
NIOBRARA	4/22/2010	PR	Water		Flowing
NIOBRARA	11/29/2016	SI			

Casing Strings

Surface, 392.0ftKB

Casing Description	Run Date	OD (in)	Wt/Len (l...)	Grade	Top, MD (ft...)	MD (ftKB)
Surface	10/20/1996	8 5/8	24.00		11.0	392.0

Production, 7,172.0ftKB

Casing Description	Run Date	OD (in)	Wt/Len (l...)	Grade	Top, MD (ft...)	MD (ftKB)
Production	10/23/1996	4 1/2		N-80	11.0	7,172.0

Cement

Description	Top Depth (ftKB)	Bottom Depth (ftKB)
Surface Casing Cement	11.0	392.0

Description	Top Depth (ftKB)	Bottom Depth (ftKB)
Production Casing Cement	11.0	7,172.0

Tubing Strings

Tubing Description	Run Date	String...	ID (in)	Wt (lb/ft)	Grade	Len (ft)	Set De...
Tubing	3/21/2003	2 3/8				7,009.00	

Tubing Components

Item Des	OD (in)	Wt (lb/ft)	Grade	Jts	Len (ft)	Btm (ftKB)	Btm (TVD) (ftKB)
Tubing	2 3/8			225	7,007.40	7,020.4	
Seal Nipple	2 3/8			1	1.10	7,021.5	
Notched collar	2 3/8			1	0.50	7,022.0	

Tubing Description	Run Date	String...	ID (in)	Wt (lb/ft)	Grade	Len (ft)	Set De...
Tubing - Production	12/9/2008	2 3/8	2.00			6,730.00	

Tubing Components

Item Des	OD (in)	Wt (lb/ft)	Grade	Jts	Len (ft)	Btm (ftKB)	Btm (TVD) (ftKB)
Tubing	2 3/8			216	6,730.00	6,741.0	

VERTICAL, ORIGINAL HOLE, 2/15/2022 9:19:47 AM

Report Printed: 2/15/2022