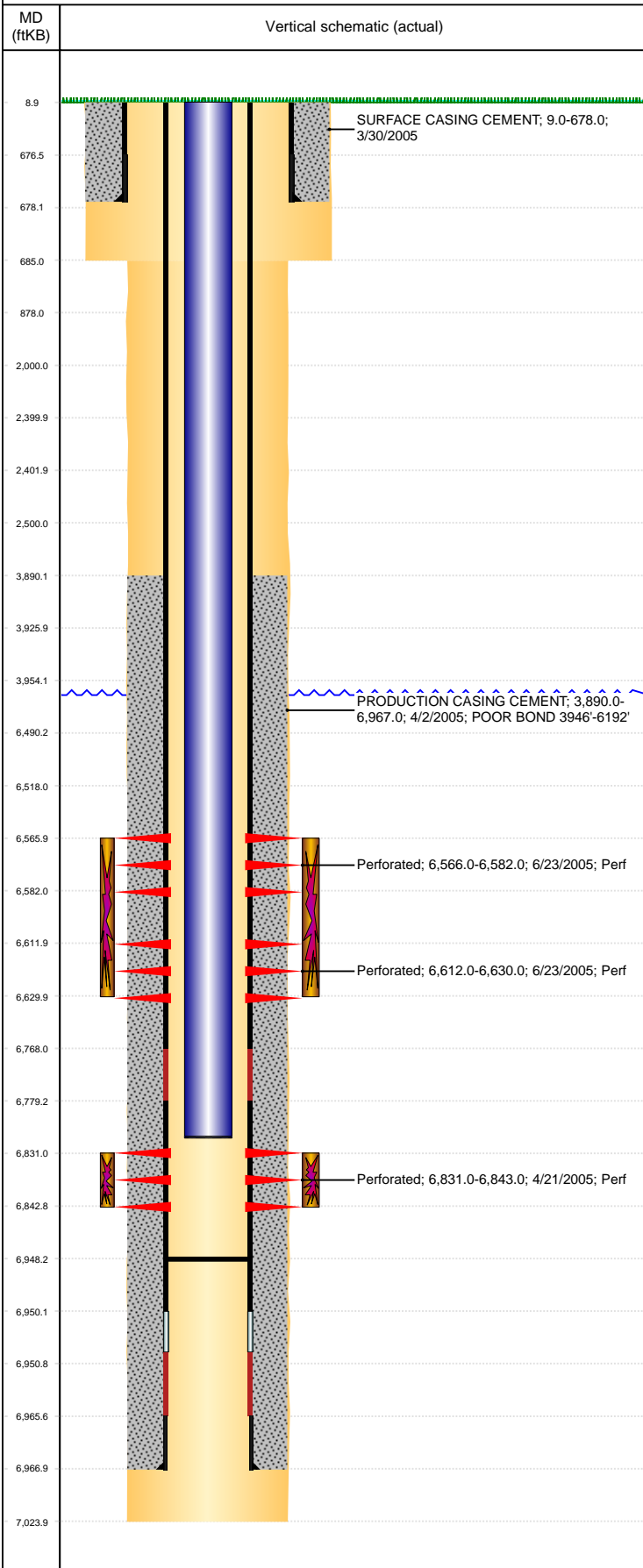


Well Name: TANIA D02-23

VERTICAL, ORIGINAL HOLE, 2/14/2022 11:05:03 AM



Well Header									
API 05-123-22818		Business Unit DJ BASIN			District 15		Well Config VERTICAL		
KB - GL / MSL (ft... 9.00		Spud Date 3/29/2005		P & A Date		Well Production Status TA (AT SURFACE)			SoRT No
Comment POOR BOND 3946-6192. TUBING DETAIL: BLADE BIT & SEAL NIPPLE = 1.875". STATE SHOWS SHUT IN SINCE OCT 2016.									
Surface Location (Congressional)									
Qtr 3 NE		Qtr 4 SE	Section 2	Twنشp 3	Twنش... N	Range 64	Rng E/... W	Actual Latitude (°) 40.25103850	Actual Longitude (°) -104.51331344
Wellbore Sections									
Section Des			Size (in)			Act Top, MD (ftKB)		Act Btm, MD (ftKB)	
SURFACE			12 1/4			9		685	
PRODUCTION			7 7/8			685		7,024	
Casing Strings									
Csg Des			Run Date		OD (in)	Wt/Len (lb/ft)	Grade	Top, MD (ftKB)	MD (ftKB)
Surface			3/30/2005		8 5/8	24.00	J-55	9.0	678.0
Production			4/2/2005		4 1/2	11.60	M-80	9.0	6,967.0
Cement									
Des					Start Date		Top (ftKB)		Btm (ftKB)
SURFACE CASING CEMENT					3/30/2005		9.0		678.0
PRODUCTION CASING CEMENT					4/2/2005		3,890.0		6,967.0
Zone Statuses									
Zone Name		Status Date	Status	Fluid Type	Job			Prod Method	
NIOBRARA		9/22/2005	PR	Water	RECOMPLETION, 6/21/2005 00:00			Flowing	
NIOBRARA		5/6/2010	PR					Flowing	
CODELL		9/22/2005	PR		RECOMPLETION, 6/21/2005 00:00			Flowing	
CODELL		5/6/2010	PR					Flowing	
Perforation Data									
Linked Zone			Bnch/Stg	Entered Shot Total	Top (ftKB)		Btm (ftKB)		Date
NIOBRARA, ORIGINAL HOLE				96	6,566.00		6,582.00		6/23/2005
NIOBRARA, ORIGINAL HOLE				108	6,612.00		6,630.00		6/23/2005
CODELL, ORIGINAL HOLE				48	6,831.00		6,843.00		4/21/2005
Stimulation Intervals									
Zone				Start Date		Top (ftKB)		Btm (ftKB)	
NIOBRARA, ORIGINAL HOLE				7/21/2005		6,566.0		6,630.0	
CODELL, ORIGINAL HOLE				5/2/2005		6,831.0		6,843.0	
Other In Hole									
Run Date		Des			Make		OD (in)	Top (ftKB)	Btm (ftKB)
Logs									
Date		Type				Top, MD (ftKB)		Btm, MD (ftKB)	
4/2/2005		COMPENSATED DENSITY				4,150.0		6,995.0	
4/2/2005		INDUCTION				650.0		7,015.0	
4/8/2005		CEMENT BOND				4,500.0		6,932.0	
5/4/2011		GYRO				10.0		6,800.0	
Plug Back Total Depths									
Date		Type			Com				Depth (ftKB)
4/8/2005		FILL			DEPTH LOGGER ON CBL				6,932.0
9/22/2005		FILL			CLEAN OUT				6,948.0