



---

# Great Western Operating Company LLC LONG STRING POST JOB REPORT

SELTZER LD 09-376HC 05-001-10194  
S:4 T:1S R:67W Adams CO

CallSheet #: 77578  
Proposal #: 53847



**LONG STRING Post Job Report**

**Attention:** Great Western Operating Company LLC  
Great Western Operating Company LLC  
1001 17TH STREET, SUITE 2000 | DENVER, CO 80202

---

Dear Great Western Operating Company LLC,

Thank you for the opportunity to provide cementing services on this well. American Cementing strives to achieve complete customer satisfaction. If you have any questions regarding the services or data provided, please contact American Cementing at any time.

Sincerely,

**Scott Pollard**

Sr. Account Manager | (303) 249-6761 | [scott.pollard@americacementing.com](mailto:scott.pollard@americacementing.com)

**Field Office**      1716 E Allison Rd, Cheyenne, WY 82007  
Phone: (307) 414-0049

## Job Details & Summary

### Geometry

Type	Function	OD (in)	ID (in)	Weight (lb/ft)	Top (ft)	Bottom (ft)	Excess (%)
Casing	Outer	9.625	8.921	36	0	2026	0
Open Hole	Outer	n/a	8.5	n/a	2026	1362.95	0
Open Hole	Outer	n/a	8.5	n/a	1362.95	18398	7
Casing	Inner	5.5	4.778	20	0	18398	0

### Equipment / People

Unit Type	Unit
Field Storage Silo	FSS(CTS)-436
Field Storage Silo	FSS(CTS)-442
Field Storage Silo	FSS(CTS)-440
Field Storage Silo	FSS(CTS)-458
AS Cement Trailer Float	CTF(FUF)-308
AS Cement Trailer Float	CTF-9309
AS Cement Trailer Float	CTF-018
AS Cement Trailer Float	CTF-7145
Cement Trailer Float	CTF-278
Cement Trailer Float	CTF-202
Cement Trailer Float	CTF-193
Cement Pump Float	CPF-182
Cement Pump Float	CPF-184
Cement Utility Float	CUF(FIF)-163
Cement Trailer Float	CTF-006
Light Duty Vehicles	LDV-047

### Timing

Event	Date/Time
Call Out	7/20/2021 20:30
Depart Facility	7/20/2021 23:00
On Location	7/21/2021 01:00
Rig Up Iron	7/21/2021 01:30
Job Started	7/21/2021 06:20
Job Completed	7/21/2021 08:39
Rig Down Iron	7/21/2021 09:00
Depart Location	7/21/2021 12:00

### General Job Information

Metrics	Value
Well Fluid Density	11 lb/gal
Well Fluid Type	SBM
Rig Circulation Vol	1680 bbls
Rig Circulation Time	2 hours
Calculated Displacement	408.34 bbls
Actual Displacement	408 bbls
Total Spacer to Surface	33 bbls

### Casing Equipment

Type	Description	Qty	MD	TVD
Centralizers		151		
Landing/Float Collar	5.5"		18,393	7,942
Float Shoe	5.5"		18,398	7,942

#### • Casing Equipment-Centralizer Depths

Production Centralizer Depths: 1990.29, 2035.59, 2080.86, 2126.16, 2171.46, 2216.7, 2261.97, 2307.24, 2352.52, 2397.83, 2441.14, 2486.45, 2531.75, 2577.05, 2622.01, 2667.28, 2712.58, 2757.82, 2803.07, 2848.34, 2893.64, 2938.94, 2984.24, 3029.5, 3074.74, 3120.05, 3165.09, 3210.3, 3255.57, 3300.82, 3346.06, 3391.36, 3436.6, 3481.84, 3527.13, 3572.43, 3617.74, 3663.02, 3708.3, 3753.54, 3798.84, 3844.16, 3889.46, 3934.78, 3980.1, 4025.41, 4070.73, 4116.04, 4161.32, 4206.61, 4251.91,

4295.41, 4340.71, 4386.01, 4431.33, 4476.57, 4521.85, 4567.09, 4612.39, 4657.62, 4702.86, 4748.16, 4793.47, 4838.78, 4884.09, 4929.4, 4974.72, 5019.96, 5065.26, 5110.5, 5155.78, 5201.02, 5246.3, 5291.55, 5336.83, 5382.13, 5427.41, 5472.69, 5517.96, 5563.25, 5608.55, 5653.87, 5699.17, 5744.46, 5789.73, 5835.02, 5880.31, 5925.63, 5970.93, 6016.23, 6061.53, 6106.81, 6151.75, 6197, 6242.27, 6287.57, 6332.87, 6377.9, 6423.19, 6468.48, 6513.79, 6559.08, 6604.39, 6649.67, 6694.96, 6740.25, 6785.55, 6830.83, 6876.13, 6921.42, 6966.7, 7012.01, 7057.31, 7102.64, 7147.97, 7193.25, 7238.56, 7283.84, 7329.15, 7374.44, 7419.74, 7465.05, 7521.73, 7567.02, 7612.32, 7657.63, 7702.94, 7748.25, 7793.55, 7838.85, 7884.16, 7929.43, 7974.72, 8020.01, 8065.3, 8110.61, 8155.93, 8201.24, 8246.52, 8291.83, 8337.11, 8382.42, 8427.73, 8473.03, 8518.35, 8563.68, 8620.28, 8665.59, 8710.89, 8756.19, 8831.81

### Job Details

Metrics	Value
Flare Prior to Job	No
Flare During Job	No
Flare at End of Job	No
Well Full Prior to Job	Yes
Well Fluid Density Into Well	11 lb/gal
Well Fluid Density Out of Well	11 lb/gal

### Job Details (cont.)

Metrics	Value
BHCT	190 °F
BHST	210 °F
Ambient Temperature	70 °F

### Circulation

Lost Circulation Experienced
No

### Job Execution Information

Fluid	Product	Function	Density (lb/gal)	Yield (ft <sup>3</sup> /sk)	Water Rq. (gal/sk)	Water Rq. (gal/bbl)	Volume (sks)	Volume (bbl)	Volume (cuft)	Designed Top (ft)
1	WBM Spacer	Spacer	12.0			41.20		120.00		0
2	Fresh Water	Spacer	8.34			42.00		40.00		319
3	ACem P50.6.02C	Tail	14.50	1.48	6.66		2655.00	700.33	3929.40	1363
4	Retarded Water	Displacement	8.34			41.90		20.00		17493
5	3% KCL with Chems	DisplacementFinal	8.34			42.00		388.00		0

### Job Fluid Details

Fluid	Type	Fluid	Product	Function	Conc.	Uom
1	Flush	WBM Spacer	Surfactant, S-801c	Surfactant	0.80	gal/bbl
3	Tail	ACem P50.6.02C	CLASS G	Cement	50.00	%
3	Tail	ACem P50.6.02C	FLY ASH (ROCKIES)	Extender	50.00	%
3	Tail	ACem P50.6.02C	EC-2	BondEnhancer	3.00	%BWOB
3	Tail	ACem P50.6.02C	FL-24	FluidLoss	0.30	%BWOB
3	Tail	ACem P50.6.02C	FL-66	FluidLoss	0.30	%BWOB
3	Tail	ACem P50.6.02C	FP-24	Defoamer	0.30	%BWOB
3	Tail	ACem P50.6.02C	GW-86	Viscosifier	0.05	%BWOB
3	Tail	ACem P50.6.02C	S-8	StrengthRetrogression	20.00	%BWOB
3	Tail	ACem P50.6.02C	SR-20	Retarder	0.05	%BWOB
3	Tail	ACem P50.6.02C	STATIC FREE	Other	0.01	lb/sk
4	Displacement	Retarded Water	SR-61L	Retarder	0.10	gal/bbl

## Job Logs

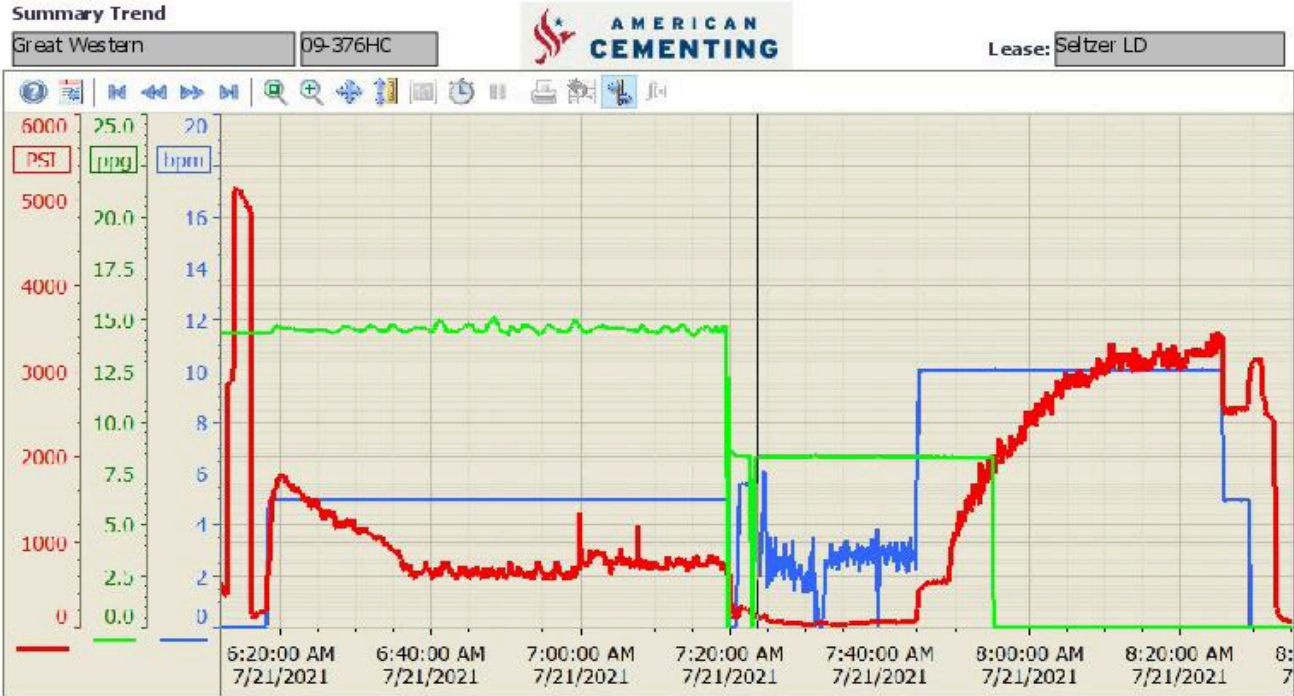
Line	Event	Date (MM/DD/YY)	Time (HH:MM)	Density (lb/gal)	Pump Rate (bpm)	Cumulative Pump Volume (bbls)	Pipe Pressure (psi)	Annular Pressure (psi)	Comment
1	Call Out	7/20/2021	20:30						ACC gets called out , requested time on location was 0230 hrs
2	Depart Facility	7/20/2021	23:00						ACC depart facility , Requested time on location was 0230 hrs
3	Arrive To Location	7/21/2021	01:00						ACC arrives to location , rig is currently running casing have about 1000 ' left to run
4	Rig Up	7/21/2021	01:30						ACC spots in units and rigs up equipment and iron
5	Safety Meeting	7/21/2021	05:00						ACC had a pre job safety meeting w/ rig hands and OSR , went over job procedure
6	Pump Spacer	7/21/2021	05:40	12	8	120	1000		Rig starts pumping 12 ppg spacer at 8 bpm w/ 1000 psi , pumped total of 120 bbls
7	Pump FW Spacer	7/21/2021	05:55	8.33	8	40	900		Rig starts pumping Fw spacer at 8 bpm w/ 900 psi , Pumped total of 40 bbls
8	Shut Down	7/21/2021	06:00						Rig shuts down pumping
9	Rig Up	7/21/2021	06:08						ACC rigs up to CRT
10	Drop Bottom Plug	7/21/2021	06:10						TOOL hands drop bottom plug
11	Pressure Test	7/21/2021	06:20				5300		Pressure test pumps and lines to 5300 psi
12	Pump Cement	7/21/2021	06:25	14.5	10		1600		Start pumping and mixing Primary cement at 10 bpm w/ 1600 psi
13	Pump Cement	7/21/2021	06:54	14.5	10	315	800		CPF-182 swap to silo 442 at 10 bpm w/ 315 bbls gone w/ 800 psi
14	Pump Cement	7/21/2021	07:07	14.5	10	411	900		CPF-184 swap to silo 440 at 411 bbls gone w/ 900 psi
15	Shut Down	7/21/2021	07:39	14.5	8	620			CPF-182 shuts down at 620 bbls gone , starts washing pump and lines to open top
16	Shut Down	7/21/2021	07:42	14.5		700.33			CPF-184 Shut down And Starts washing pump to pit , Pumped total of 700.33 bbls of 14.5 ppg 2655 sks 1.48 yld 6.7 g/sk ) NOTE : Density was verified by mud scales and OSR every 100 bbls pumped
17	Drop Top Plug	7/21/2021	07:48						TOOL hand Dropped TopPlug
18	Pump Disp	7/21/2021	07:51	8.33	10		500		Start Pumping disp at 10 bpm w/ 500 psi ( 1st 20 bbls had Sr-61 retarder )
19	Spacer To Surface	7/21/2021	08:30	8.5	10	375	3100		At 375 bbls gone got spacer back to surface at 10 bbls away w/3100 psi , Rig Starts dumping returns to open top
20	Slow Rate	7/21/2021	08:33	8.5	10	390	2500		At 390 bbls away slow down rate to 5 bpm w/ 2500 psi



Line	Event	Date (MM/DD/YY)	Time (HH:MM)	Density (lb/gal)	Pump Rate (bpm)	Cumulative Pump Volume (bbls)	Pipe Pressure (psi)	Annular Pressure (psi)	Comment
21	Land Plug	7/21/2021	08:36	8.5		408	2400	2900	Land plug at 408 bbls gone , Final circ pressure was 2400 psi , Bump plug to 2900 psi
22	Bleed Back	7/21/2021	08:38						Bleed back 500 psi to pump got 1 bbl back
23	Check Floats	7/21/2021	08:39						Check floats to rigs trip tanks got 3.4 bbls back , got total of 4.4 bbls back
24	Rig Down	7/21/2021	09:00						ACC starts rigging down equipment and iron
25	Depart Location	7/21/2021	12:00						ACC departs location
26	Other	7/21/2021	12:01						Total spacer back to surface - 33 bbls

# Pump Diagrams

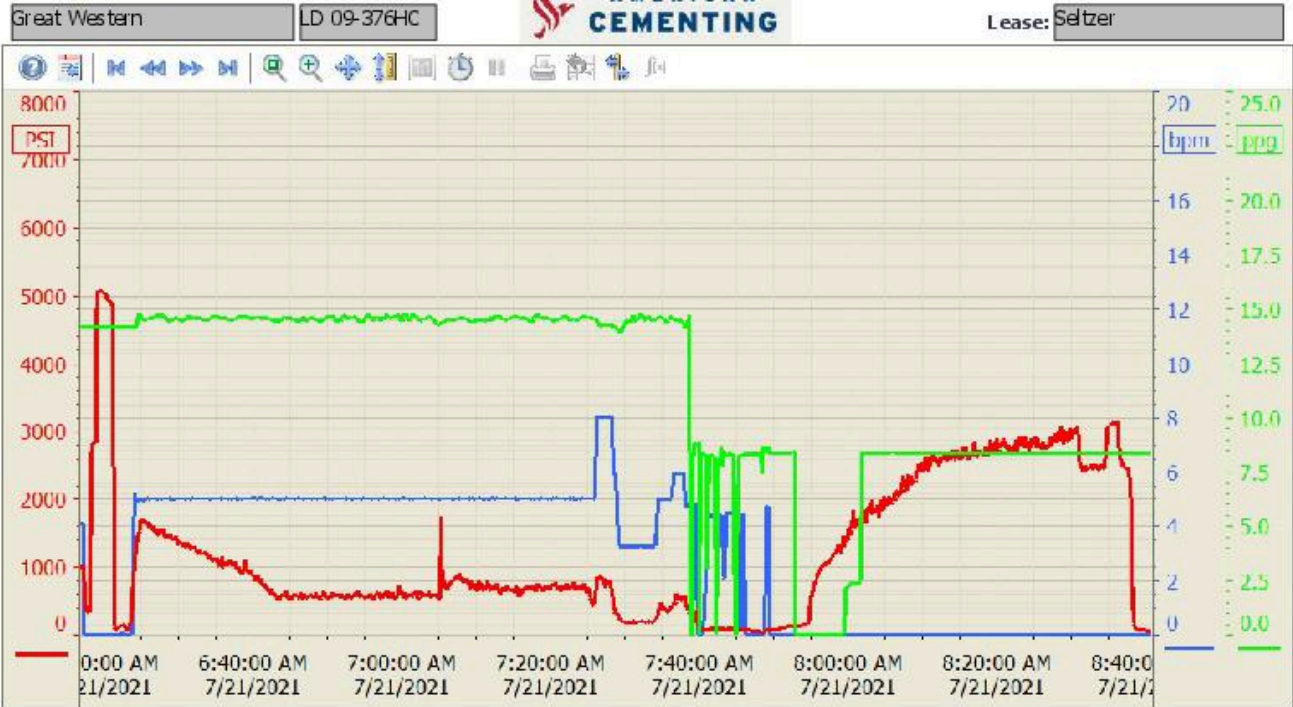
Pump 182



7/21/2021 9:32:06 AM

Pump 184

Summary Trend



7/21/2021 9:20:34 AM

