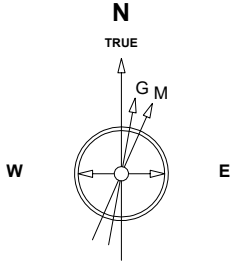


Great Western Operating Company, LLC

Created by mmount
Date plotted 21-Jul-2021

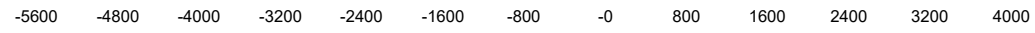
Location	Colorado	Slot	Slot W08 - Seltzer LD 09-376HC
Field	Wattenburg	Well	Seltzer LD 09-376HC
Installation	Seltzer	Wellbore	Seltzer LD 09-376HC (AWB)

Plot reference is Seltzer LD 09-376HC (AWB).
Ref wellpath is Seltzer LD 09-376HC (AWP#1).
Coordinates are in Feet reference Slot W08 - Seltzer LD 09-376HC.
True Vertical Depths are reference Rig Datum.
Measured Depths are reference Rig Datum.
Rig Datum: Actual Datum #1
Rig Datum to Mean Sea Level: 5160.00 ft.
Plot North is aligned to TRUE North.

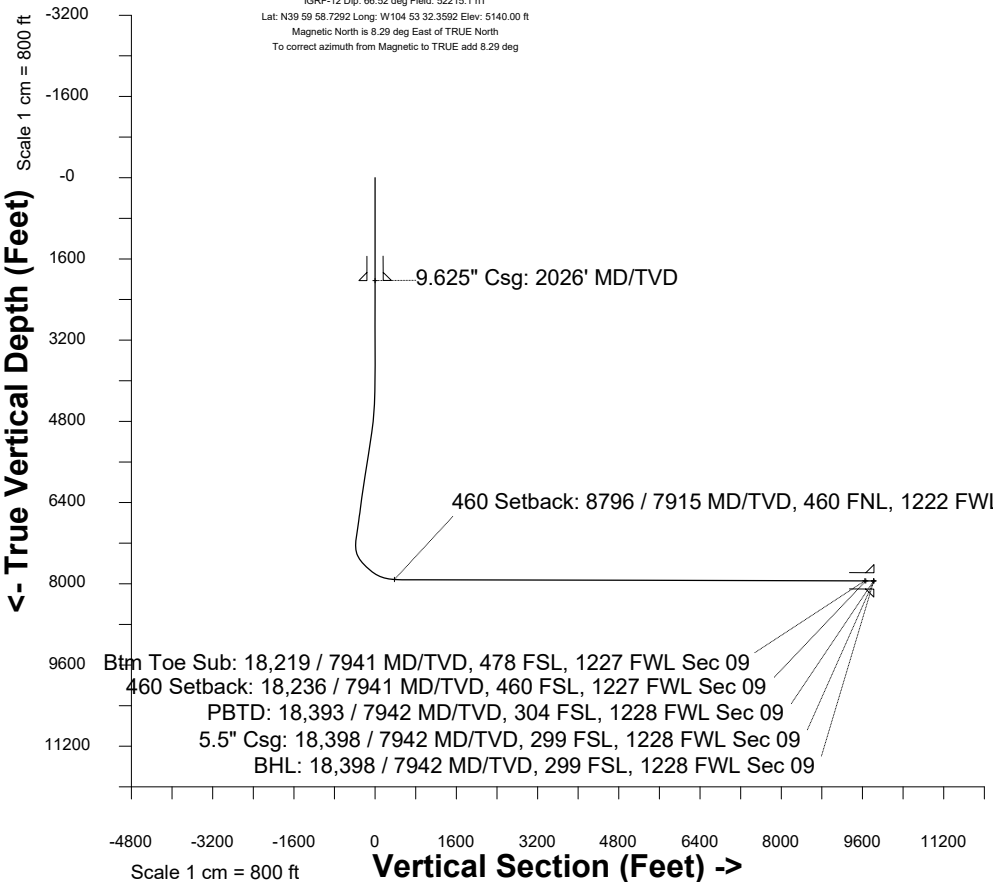


Scale 1 cm = 400 ft

East (Feet) ->

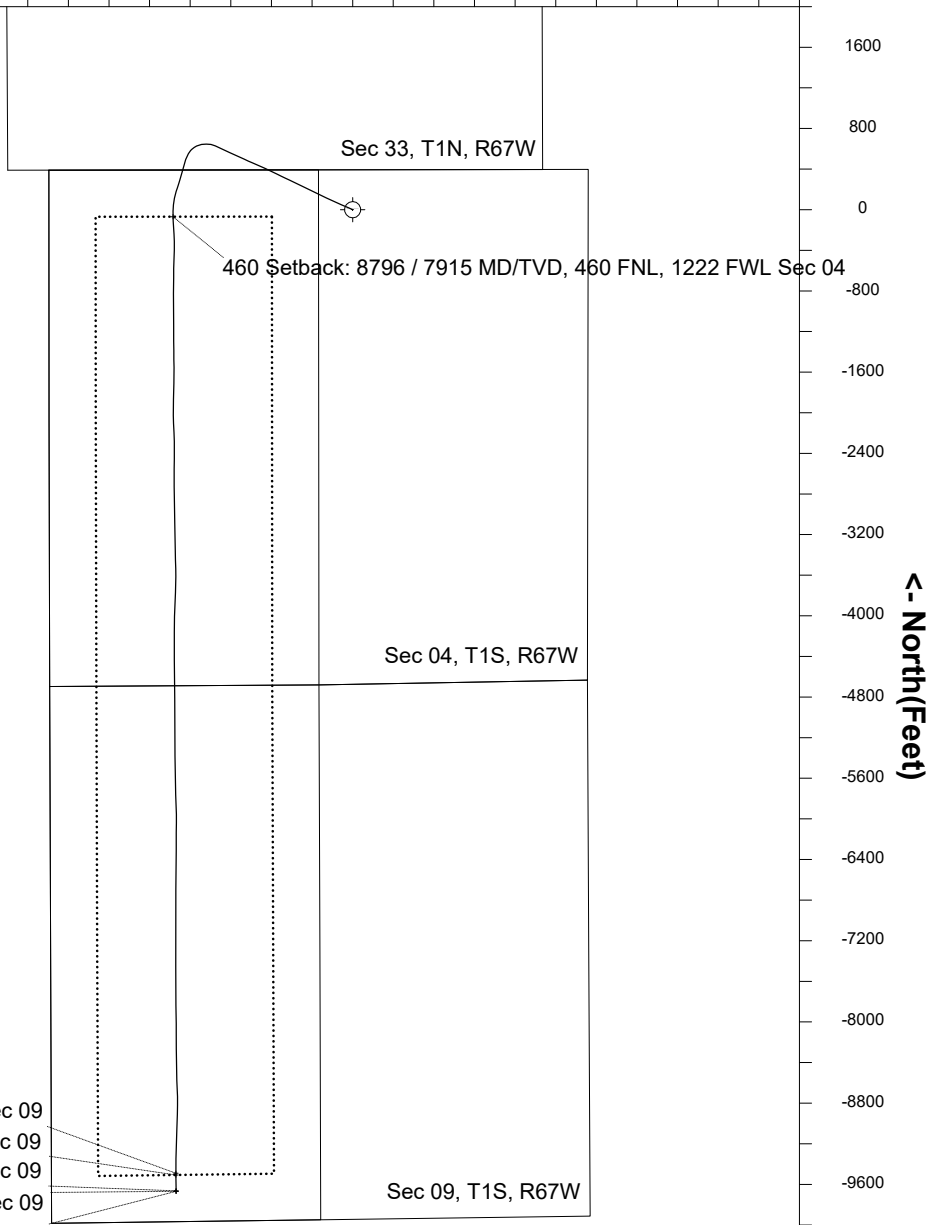


Jan-17-2017
IGRF-12 Dip: 66.52 deg Field: 52215.1 nT
Lat: N39 59 58.7292 Long: W104 53 32.3592 Elev: 5140.00 ft
Magnetic North is 8.29 deg East of TRUE North
To correct azimuth from Magnetic to TRUE add 8.29 deg



Azimuth 190.20 with reference 0.00 N, 0.00 E from Slot W08 - Seltzer LD 09-376HC

Btm Toe Sub: 18,219 / 7941 MD/TVD, 478 FSL, 1227 FWL Sec 09
460 Setback: 18,236 / 7941 MD/TVD, 460 FSL, 1227 FWL Sec 09
PBTD: 18,393 / 7942 MD/TVD, 304 FSL, 1228 FWL Sec 09
5.5" Csg: 18,398 / 7942 MD/TVD, 299 FSL, 1228 FWL Sec 09
BHL: 18,398 / 7942 MD/TVD, 299 FSL, 1228 FWL Sec 09



Great Western Operating Co, LLC
 Directional Survey Report
 MDs and TVDs are from Rig Floor 5160.0ft above Mean Sea Level

Wellbore Information

Date Created	Date Revised	API #	RKB above GL	Well Name
Mar-12-2021	Jul-21-2021	05-001-10194	20.00	Seltzer LD 09-376HC

Wellpath Report

MD[ft]	Inc[deg]	Azi[deg]	TVD[ft]	North[ft]	East[ft]
0.00	0.00	0.00	0.00	0.00	0.00
15.00	0.00	0.00	15.00	0.00	0.00
99.00	0.77	16.43	99.00	0.54	0.16
187.00	0.60	52.86	186.99	1.39	0.69
276.00	0.31	308.66	275.99	1.82	0.88
369.00	0.37	171.54	368.99	1.68	0.73
458.00	0.39	152.77	457.99	1.13	0.91
548.00	0.20	191.75	547.99	0.70	1.01
638.00	0.17	84.89	637.99	0.56	1.12
728.00	0.09	285.49	727.99	0.59	1.18
818.00	0.23	122.75	817.99	0.51	1.26
908.00	0.26	114.51	907.98	0.33	1.60
998.00	0.07	84.08	997.98	0.25	1.84
1088.00	0.30	5.56	1087.98	0.49	1.92
1178.00	0.13	305.47	1177.98	0.78	1.86
1268.00	0.30	231.91	1267.98	0.70	1.59
1358.00	0.62	289.44	1357.98	0.71	0.95
1448.00	0.41	243.08	1447.98	0.73	0.20
1538.00	0.40	302.73	1537.97	0.75	-0.35
1627.00	0.09	211.02	1626.97	0.86	-0.65
1717.00	0.07	254.10	1716.97	0.78	-0.74
1807.00	0.74	280.56	1806.97	0.88	-1.36
1897.00	0.32	292.08	1896.97	1.08	-2.17
1971.00	0.41	160.41	1970.97	0.91	-2.27
2139.00	0.06	293.55	2138.97	0.37	-2.15
2229.00	0.13	295.73	2228.96	0.44	-2.28
2318.00	0.06	322.96	2317.96	0.52	-2.40
2408.00	0.07	321.28	2407.96	0.60	-2.47
2497.00	0.01	262.40	2496.96	0.64	-2.51
2587.00	0.03	318.75	2586.96	0.66	-2.53
2677.00	0.08	280.79	2676.96	0.69	-2.61
2766.00	0.04	301.78	2765.96	0.71	-2.70
2856.00	0.04	48.96	2855.96	0.75	-2.70
2945.00	0.10	295.07	2944.96	0.81	-2.74
3035.00	0.07	120.30	3034.96	0.81	-2.77
3125.00	0.06	353.15	3124.96	0.83	-2.73
3214.00	0.04	219.94	3213.96	0.85	-2.75
3304.00	0.07	89.64	3303.96	0.83	-2.72
3393.00	0.08	33.33	3392.96	0.88	-2.63
3483.00	0.03	354.77	3482.96	0.96	-2.60
3573.00	0.15	315.74	3572.96	1.06	-2.68
3662.00	0.08	310.42	3661.96	1.19	-2.81
3751.00	0.08	302.29	3750.96	1.26	-2.91
3841.00	0.12	260.45	3840.96	1.28	-3.06
3931.00	0.05	261.69	3930.96	1.26	-3.19
4020.00	0.02	293.74	4019.96	1.26	-3.24
4110.00	2.14	297.36	4109.94	2.04	-4.75
4199.00	5.62	296.86	4198.73	4.77	-10.11
4289.00	8.09	296.80	4288.07	9.62	-19.70
4379.00	10.91	293.70	4376.83	15.90	-33.15
4468.00	13.76	293.51	4463.77	23.51	-50.57
4558.00	16.49	292.67	4550.64	32.70	-72.18
4648.00	18.79	290.78	4636.41	42.77	-97.52
4737.00	19.25	295.61	4720.55	54.20	-124.15
4827.00	21.39	294.79	4804.95	67.49	-152.43
4917.00	22.60	295.37	4888.39	81.78	-182.96
5006.00	29.21	293.48	4968.41	97.78	-218.37
5096.00	30.07	293.38	5046.63	115.48	-259.21
5185.00	30.34	296.50	5123.55	134.36	-299.80
5275.00	30.10	295.47	5201.32	154.21	-340.51
5365.00	30.40	296.10	5279.07	173.93	-381.34
5454.00	30.43	296.47	5355.82	193.88	-421.74
5544.00	30.37	296.60	5433.45	214.23	-462.48

MD[ft]	Inc[deg]	Azi[deg]	TVD[ft]	North[ft]	East[ft]
5633.00	30.48	296.30	5510.19	234.30	-502.83
5723.00	30.37	295.81	5587.80	254.32	-543.78
5812.00	30.13	294.77	5664.68	273.48	-584.32
5902.00	30.13	295.70	5742.52	292.74	-625.18
5991.00	29.85	295.88	5819.60	312.09	-665.24
6081.00	29.71	295.01	5897.72	331.30	-705.60
6171.00	30.06	295.48	5975.75	350.42	-746.16
6260.00	29.90	295.97	6052.84	369.73	-786.22
6350.00	29.86	295.83	6130.88	389.31	-826.56
6439.00	29.89	294.49	6208.05	408.16	-866.68
6529.00	29.22	293.46	6286.34	426.20	-907.24
6619.00	29.11	293.77	6364.93	443.77	-947.43
6709.00	29.93	293.32	6443.25	461.48	-988.08
6798.00	29.09	293.87	6520.70	479.02	-1028.25
6888.00	29.82	294.84	6599.07	497.28	-1068.57
6978.00	29.40	294.73	6677.31	515.92	-1108.94
7067.00	30.04	294.21	6754.61	534.20	-1149.10
7157.00	30.40	295.51	6832.38	553.24	-1190.20
7247.00	30.11	294.88	6910.12	572.54	-1231.23
7336.00	29.91	294.67	6987.19	591.20	-1271.65
7426.00	29.68	294.75	7065.29	609.89	-1312.27
7515.00	30.49	295.55	7142.30	628.86	-1352.66
7605.00	30.39	279.57	7220.02	642.51	-1395.77
7695.00	30.35	269.61	7297.72	646.14	-1440.99
7784.00	33.94	260.83	7373.11	642.03	-1488.04
7874.00	37.36	245.40	7446.38	626.62	-1537.79
7963.00	40.68	225.84	7515.78	595.04	-1583.34
8053.00	42.10	209.06	7583.51	548.09	-1619.15
8142.00	45.06	199.31	7648.05	492.21	-1644.09
8232.00	50.14	196.21	7708.73	428.92	-1664.28
8322.00	55.03	193.80	7763.40	359.90	-1682.73
8411.00	56.55	197.98	7813.45	289.14	-1702.90
8500.00	67.47	197.77	7855.16	214.46	-1726.98
8590.00	74.30	193.58	7884.62	132.63	-1749.87
8679.00	82.26	186.96	7902.70	46.99	-1765.32
8769.00	85.06	178.53	7912.66	-42.26	-1769.58
8858.00	86.86	177.07	7918.93	-130.97	-1766.17
8948.00	90.11	175.83	7921.31	-220.75	-1760.60
9038.00	90.38	178.07	7920.92	-310.62	-1755.81
9127.00	90.22	182.70	7920.46	-399.59	-1756.41
9217.00	90.17	181.98	7920.15	-489.51	-1760.08
9307.00	89.33	180.50	7920.55	-579.49	-1762.03
9396.00	89.25	180.38	7921.65	-668.48	-1762.71
9486.00	89.34	181.19	7922.76	-758.46	-1763.95
9576.00	89.01	180.28	7924.05	-848.45	-1765.10
9665.00	89.22	179.34	7925.43	-937.43	-1764.81
9755.00	90.00	179.88	7926.04	-1027.43	-1764.19
9844.00	90.19	178.79	7925.89	-1116.42	-1763.16
9934.00	90.16	180.24	7925.62	-1206.41	-1762.40
10024.00	90.26	179.84	7925.29	-1296.41	-1762.46
10114.00	90.20	179.17	7924.92	-1386.41	-1761.68
10203.00	90.28	179.63	7924.55	-1475.40	-1760.75
10293.00	90.26	179.87	7924.13	-1565.40	-1760.36
10382.00	90.16	180.08	7923.80	-1654.40	-1760.32
10472.00	90.23	181.77	7923.50	-1744.39	-1761.77
10562.00	89.98	181.64	7923.33	-1834.35	-1764.45
10651.00	90.31	181.09	7923.11	-1923.32	-1766.57
10741.00	90.29	178.97	7922.63	-2013.31	-1766.62
10831.00	90.01	177.35	7922.40	-2103.26	-1763.73
10921.00	90.28	176.70	7922.17	-2193.14	-1759.06
11010.00	90.24	179.49	7921.77	-2282.08	-1756.10
11100.00	90.33	180.60	7921.32	-2372.08	-1756.17
11189.00	90.07	180.52	7921.01	-2461.07	-1757.04
11279.00	89.75	180.32	7921.15	-2551.07	-1757.70
11368.00	89.47	180.63	7921.76	-2640.07	-1758.44
11458.00	89.76	179.11	7922.36	-2730.06	-1758.23
11548.00	89.65	178.93	7922.82	-2820.05	-1756.69
11637.00	89.88	178.89	7923.19	-2909.03	-1755.00
11727.00	89.59	178.99	7923.60	-2999.01	-1753.34
11816.00	89.70	178.79	7924.16	-3088.00	-1751.61
11906.00	89.85	179.77	7924.51	-3177.99	-1750.48
11995.00	89.73	178.97	7924.84	-3266.98	-1749.50
12085.00	89.66	178.47	7925.32	-3356.96	-1747.49
12174.00	89.76	178.38	7925.77	-3445.92	-1745.05

MD[ft]	Inc[deg]	Azi[deg]	TVD[ft]	North[ft]	East[ft]
12264.00	89.65	178.85	7926.23	-3535.89	-1742.87
12353.00	89.64	180.59	7926.78	-3624.89	-1742.44
12443.00	89.85	180.84	7927.18	-3714.88	-1743.56
12533.00	89.69	182.41	7927.54	-3804.84	-1746.11
12622.00	89.67	182.32	7928.04	-3893.76	-1749.78
12712.00	89.59	182.35	7928.62	-3983.69	-1753.45
12801.00	89.66	180.67	7929.20	-4072.65	-1755.80
12891.00	89.64	180.02	7929.75	-4162.65	-1756.34
12980.00	90.21	179.83	7929.87	-4251.64	-1756.22
13070.00	90.20	180.08	7929.55	-4341.64	-1756.15
13160.00	89.99	179.59	7929.40	-4431.64	-1755.89
13249.00	90.07	180.00	7929.35	-4520.64	-1755.57
13339.00	90.03	179.03	7929.27	-4610.64	-1754.81
13428.00	90.02	179.55	7929.23	-4699.63	-1753.71
13518.00	89.71	178.82	7929.45	-4789.62	-1752.43
13608.00	90.46	180.49	7929.31	-4879.62	-1751.89
13698.00	89.71	180.09	7929.18	-4969.61	-1752.34
13787.00	89.46	179.93	7929.82	-5058.61	-1752.36
13877.00	89.70	179.38	7930.48	-5148.61	-1751.82
13966.00	89.98	179.52	7930.73	-5237.60	-1750.96
14056.00	89.70	179.57	7930.98	-5327.60	-1750.25
14145.00	89.83	179.35	7931.35	-5416.59	-1749.41
14235.00	89.97	179.48	7931.51	-5506.59	-1748.49
14324.00	89.66	178.51	7931.79	-5595.57	-1746.93
14414.00	89.71	178.05	7932.29	-5685.53	-1744.23
14504.00	89.66	177.27	7932.78	-5775.45	-1740.55
14594.00	89.57	179.08	7933.39	-5865.40	-1737.69
14683.00	89.67	179.68	7933.98	-5954.40	-1736.72
14773.00	89.78	180.37	7934.41	-6044.39	-1736.76
14863.00	89.91	179.85	7934.65	-6134.39	-1736.93
14952.00	89.58	180.27	7935.05	-6223.39	-1737.03
15042.00	89.70	180.41	7935.61	-6313.39	-1737.56
15131.00	89.82	180.36	7935.99	-6402.39	-1738.16
15221.00	89.82	180.16	7936.27	-6492.38	-1738.57
15311.00	89.57	180.15	7936.75	-6582.38	-1738.81
15400.00	89.63	179.89	7937.37	-6671.38	-1738.84
15490.00	90.17	181.95	7937.53	-6761.36	-1740.29
15580.00	89.96	181.24	7937.43	-6851.33	-1742.79
15669.00	89.77	180.53	7937.64	-6940.32	-1744.17
15758.00	90.00	179.76	7937.81	-7029.31	-1744.39
15848.00	89.88	179.08	7937.91	-7119.31	-1743.48
15938.00	90.04	179.86	7937.97	-7209.31	-1742.65
16027.00	89.94	179.62	7937.99	-7298.30	-1742.25
16117.00	89.68	179.64	7938.28	-7388.30	-1741.66
16207.00	90.10	179.62	7938.46	-7478.30	-1741.08
16296.00	90.11	179.92	7938.29	-7567.30	-1740.73
16386.00	90.07	179.89	7938.15	-7657.30	-1740.58
16476.00	90.12	179.90	7938.00	-7747.30	-1740.41
16565.00	89.85	179.50	7938.03	-7836.30	-1739.95
16655.00	89.95	179.35	7938.18	-7926.29	-1739.04
16744.00	89.92	179.52	7938.29	-8015.29	-1738.17
16834.00	89.97	179.64	7938.37	-8105.28	-1737.51
16924.00	90.39	179.46	7938.09	-8195.28	-1736.80
17014.00	90.35	179.47	7937.51	-8285.28	-1735.96
17104.00	90.18	179.64	7937.09	-8375.27	-1735.26
17193.00	90.46	179.79	7936.59	-8464.27	-1734.82
17283.00	90.19	178.23	7936.08	-8554.25	-1733.26
17372.00	89.16	175.72	7936.59	-8643.12	-1728.57
17462.00	89.48	178.99	7937.66	-8733.00	-1724.41
17552.00	90.03	180.69	7938.04	-8823.00	-1724.16
17641.00	89.86	181.62	7938.13	-8911.98	-1725.96
17731.00	89.79	182.28	7938.40	-9001.93	-1729.02
17821.00	89.88	182.03	7938.66	-9091.86	-1732.40
17910.00	89.30	181.86	7939.30	-9180.81	-1735.42
18000.00	89.68	181.75	7940.10	-9270.76	-1738.26
18089.00	89.58	180.88	7940.67	-9359.73	-1740.30
18179.00	89.82	180.04	7941.15	-9449.73	-1741.02
18268.00	89.79	179.48	7941.45	-9538.73	-1740.65
18358.00	89.68	179.17	7941.86	-9628.72	-1739.59
18398.00	89.68	179.17	7942.09	-9668.71	-1739.01