



11/5/2021

Mr. Austin Lee
HSE Advisor
Kerr-McGee Oil & Gas Onshore LP
501 N Division Blvd.
Platteville, Colorado 80651

**Re: Colorado Oil & Gas Conservation Commission (COGCC)
Vegetation Assessment Report (Interim Reclamation Completion Notice)
BROTEMARKLE 13-13 (331852)
Kerr-McGee Oil & Gas Onshore LP (Operator: 47120)**

Dear Mr. Lee,

Apex Companies, LLC (Apex) is presenting this letter to Kerr-McGee Oil & Gas Onshore LP (Kerr-McGee) documenting the results of a vegetation assessment that demonstrates successful completion of interim reclamation efforts, per COGCC Rule 1003, on the above-referenced location. Attached is a topographic location map and vegetation survey site map with additional location information.

Based on site visits and the completed vegetation assessment, Apex inspectors confirmed that the drilling and construction footprint has been reduced, recontoured, and seeded with a mixture consistent with species composition and reseeding practices common to the area.

On September 1, 2021, modified step-point vegetation surveys were conducted on the reclaimed portion of the well pad and on the adjacent reference areas. Foliar and basal cover, along with non-vegetated and noxious weed occurrences, were documented; 100 survey points were recorded within the reclaimed disturbance and 100 survey points were recorded within the reference area. Vegetation survey points were identified using a bullseye target tool. The survey methodology employed by Apex is based on the *step-point method* described in an interagency technical reference published by the Bureau of Land Management (BLM, 1996).

Noxious weeds listed by the Colorado Department of Agriculture were excluded from the percent of reference vegetative coverage calculations, per COGCC Rule 1003.e (2). Disturbed areas have been kept as free of all noxious weeds as practicable, per COGCC Rule 1003.f., and any noxious species identified in the reclamation area are designated as List C. To ensure reclamation vegetative composition meets the standards of Kerr-McGee Oil & Gas Onshore LP (Kerr-McGee) and the COGCC, undesirable cover is also quantified in the attached Summary of Field Data. Undesirable cover includes species identified by the United States Department of Agriculture (USDA) Natural Resource Conservation Service (NRCS) as introduced and not native to the lower 48 states, and not considered beneficial for reclamation purposes.

Survey results indicate the reclaimed area has a foliar vegetative cover that is 104.5% of the reference area. Vegetation survey results are provided in the attached survey summary table and data sheets. Based on the results of the survey, interim reclamation, as defined by COGCC Rule 1003.e (2), has been achieved. Photographs required by COGCC Rule 1003.e (3) are also attached along with the site map illustrating vegetation survey photo points and transect locations.

Apex appreciates the opportunity to provide environmental consulting services on this project. Should you have any questions or require additional information, please do not hesitate to contact me.

Sincerely,
Apex Companies, LLC

Scott M Taylor

Scott Taylor
Environmental Scientist 2
Scott.Taylor@Apexcos.com
781-635-2420

Reviewed By:

Ken McCarron

Ken McCarron, PhD
Program Manager
Ken.McCarron@Apexcos.com
804-205-7737

Attachments:

1. Vegetation Survey - Summary of Field Data
2. Topographic Location Map
3. Vegetation Survey Site Map
4. Vegetation Assessment Photo Log
5. Vegetation Survey (Field Data Tables)

Vegetation Survey - Summary of Field Data

Client	Kerr-McGee Oil & Gas Onshore LP
COGCC Location Name (ID)	BROTEMARKLE 13-13 (331852)
Assessment Date	9/1/2021
Inspector Name	Scott Taylor

Based on the survey methodology, the foliar cover (%) in each survey area is calculated by summing the total number of foliar occurrences, excluding noxious weeds, and dividing by the total occurrences in the transects. For this location:

Reclaim Area (Foliar Cover)	Reference Area (Foliar Cover)
$(89 + 8 + 0) / 197 = \mathbf{49.2\%}$	$(77 + 13 + 0) / 191 = \mathbf{47.1\%}$

For the purposes of this assessment, the undesirable foliar cover (%) is calculated by summing the total number of undesirable* foliar occurrences and dividing by the total occurrences in the transects, excluding noxious weeds. For this location:

Reclaim Area (Undesirable Foliar Cover)	Reference Area (Undesirable Foliar Cover)
$5 / (89 + 8 + 0) = \mathbf{5.2\%}$	$8 / (77 + 13 + 0) = \mathbf{8.9\%}$

The percent of reference used to evaluate the reclamation area for compliance with COGCC Rule 1003.e(2) is calculated by dividing the foliar cover (%) in the reclaim area by the foliar cover (%) in the reference area. For this location:

Percent of Reference (Reclaim % / Reference %)
$49.2\% / 47.1\% = \mathbf{104.5\%}$

Reclaim Area Vegetation

Desirable Foliar Cover	46.7%
Desirable Basal Cover	31.0%
Non Vegetated	16.2%
Noxious Weeds Cover	3.6%
Undesirable Cover	2.5%
Quality Assurance Total <i>(must equal 100)</i>	100.0%
Grass (Foliar)	89
Forb (Foliar)	8
Shrubs (Foliar)	0
Noxious Weed (Foliar)	0
Grass (Basal)	58
Forb (Basal)	3
Shrubs (Basal)	0
Noxious Weed (Basal)	7
Bare Ground	0
Litter	32
Rock	0
Total Occurrences	197

Reference Area Vegetation

Desirable Foliar Cover	42.9%
Desirable Basal Cover	16.8%
Non Vegetated	26.2%
Noxious Weeds Cover	7.9%
Undesirable Cover	6.3%
Quality Assurance Total <i>(must equal 100)</i>	100.0%
Grass (Foliar)	77
Forb (Foliar)	13
Shrubs (Foliar)	0
Noxious Weed (Foliar)	1
Grass (Basal)	29
Forb (Basal)	7
Shrubs (Basal)	0
Noxious Weed (Basal)	14
Bare Ground	0
Litter	50
Rock	0
Total Occurrences	191

* Identified as introduced and non-native to Colorado by the United States Department of Agriculture Natural Resources Conservation Service.

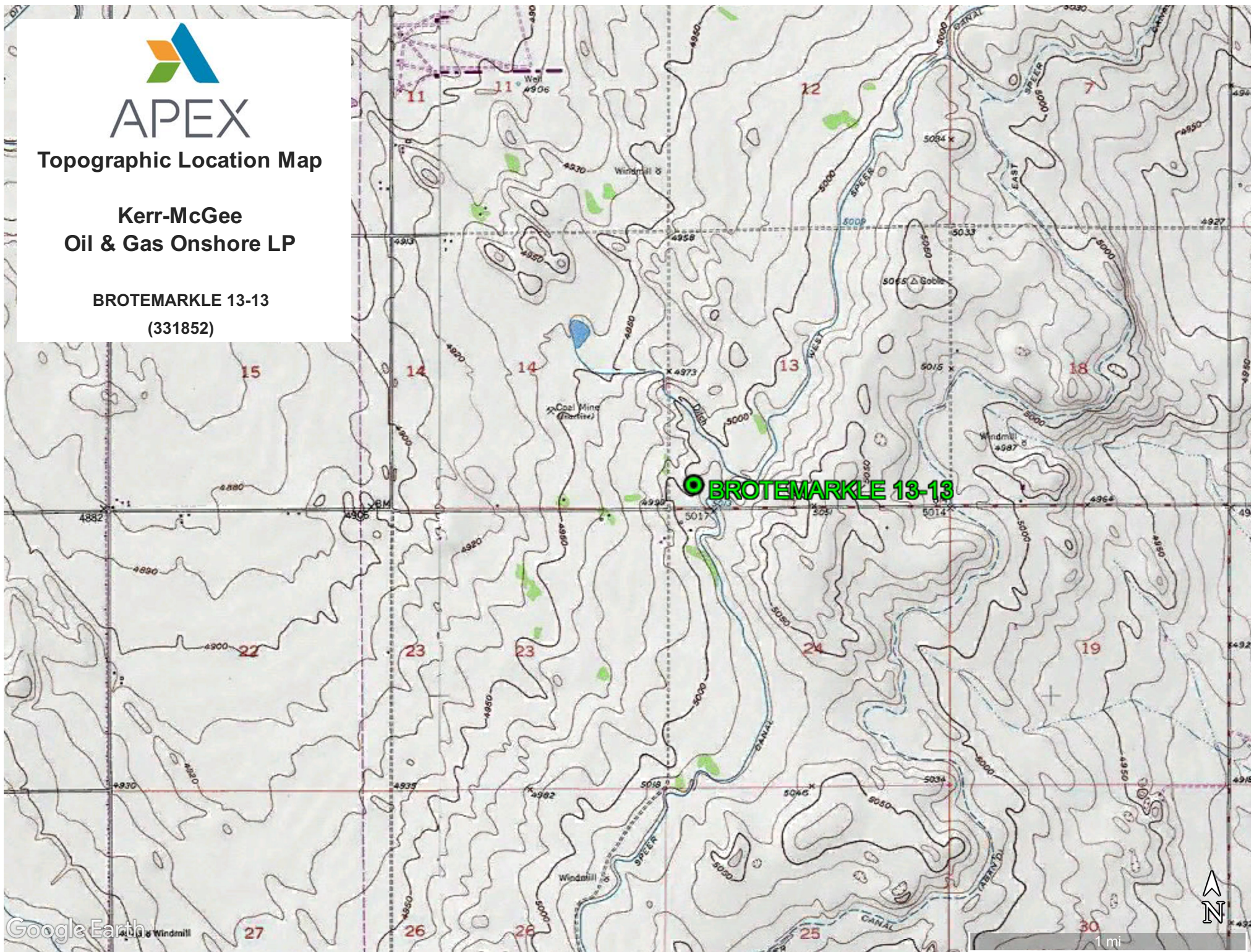


APEX

Topographic Location Map

Kerr-McGee Oil & Gas Onshore LP

BROTEMARKLE 13-13 (331852)



Google Earth



APEX

Vegetation Survey Site Map

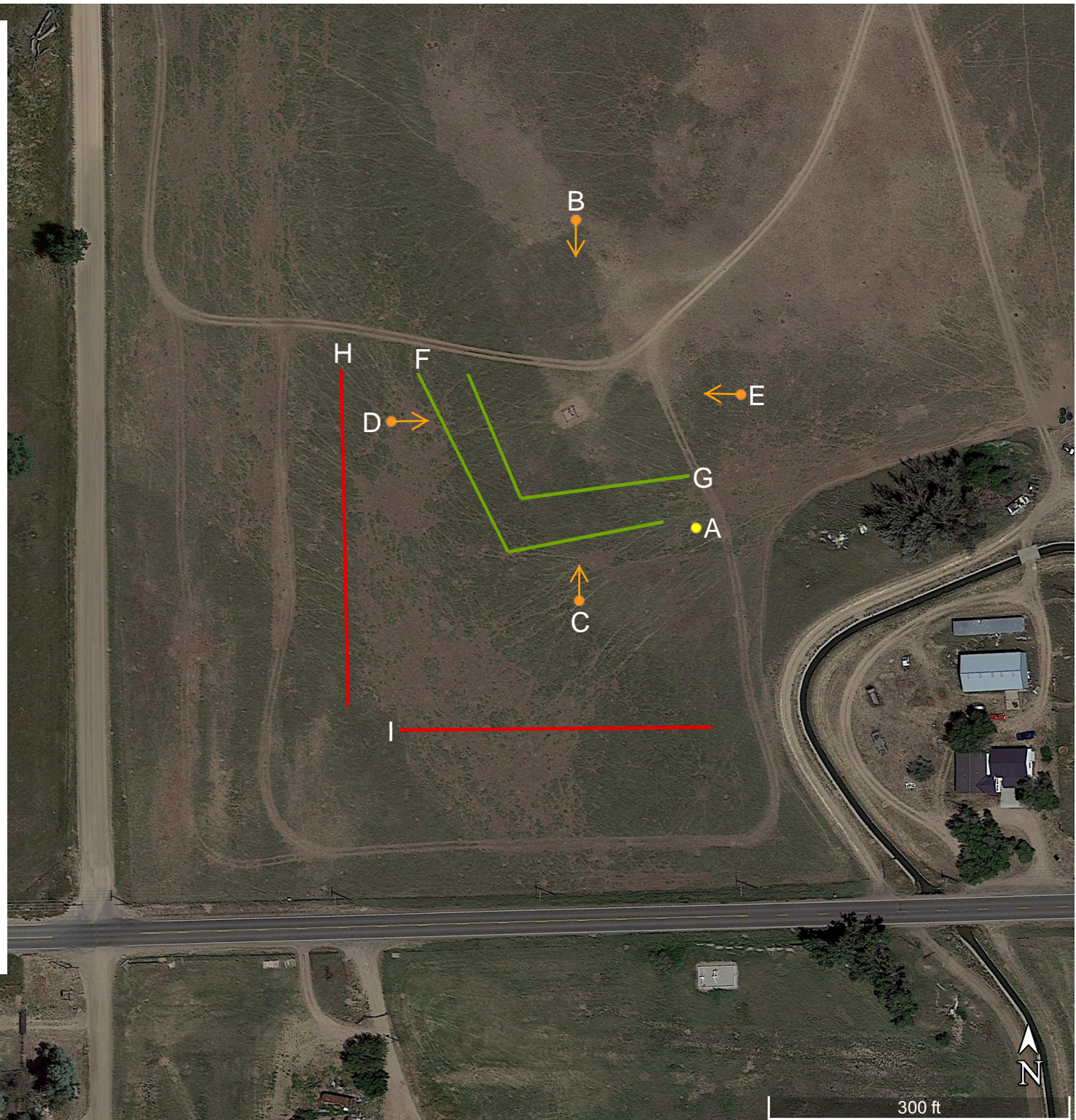
Kerr-McGee Oil & Gas Onshore LP

**BROTEMARKLE 13-13
(331852)**

	Vegetation Photo Point
	Cardinal Direction Photos
	Reclaim Transect
	Reference Transect

Legal Description: SWSW, Sec. 13, 3N-66W
 Lat/Long: 40.219320 / -104.733060
 County: Weld
 Land Use: Non-Cropland
 Reference Area Foliar Cover: 47.1
 Reclaim Area Foliar Cover: 49.2
 Cover Ratio (Reclaim/Reference): 104.5
 Inspector: S.Taylor
 Assessment Date: 09/01/2021
 Aerial Imagery Date: 06/10/2021

**Please reference coordinate disclaimer on the photo log pages.*



Vegetation Assessment Photo Log

Date Completed - 09/01/2021

Client - **Kerr-McGee Oil & Gas Onshore LP**
Location Name (ID) - **BROTEMARKLE 13-13 (331852)**



Photo Point A: Edge of Disturbance - Facing West

*Geographic coordinates provided in the borders of all attached photos are based on points identified by the mobile phone or tablet which collected the photo. Coordinate accuracy in this format is typically no greater than 5 meters, while the points illustrated in the site diagram associated with this submittal were collected with a high accuracy GPS unit with sub-meter accuracy. Discrepancies between the site diagram and photo coordinates will exist.

Vegetation Assessment Photo Log

Date Completed - 09/01/2021

Client - **Kerr-McGee Oil & Gas Onshore LP**
Location Name (ID) - **BROTEMARKLE 13-13 (331852)**



Photo Point B: North of Disturbance - Facing South



Photo Point C: South of Disturbance - Facing North



Photo Point D: West of Disturbance - Facing East



Photo Point E: East of Disturbance - Facing West

Vegetation Assessment Photo Log

Date Completed - 09/01/2021

Client - **Kerr-McGee Oil & Gas Onshore LP**
Location Name (ID) - **BROTEMARKLE 13-13 (331852)**



Photo Point A: Reclaim Area Vegetation - Facing North

Vegetation Assessment Photo Log

Date Completed - 09/01/2021

Client - **Kerr-McGee Oil & Gas Onshore LP**
Location Name (ID) - **BROTEMARKLE 13-13 (331852)**



Photo Point F: Reclaim Transect 1 - Facing South



Photo Point G: Reclaim Transect 2 - Facing West

Vegetation Assessment Photo Log

Date Completed - 09/01/2021

Client - **Kerr-McGee Oil & Gas Onshore LP**
Location Name (ID) - **BROTEMARKLE 13-13 (331852)**



Photo Point A: Reference Area Vegetation Photo Point - Facing South

Vegetation Assessment Photo Log

Date Completed - 09/01/2021

Client - **Kerr-McGee Oil & Gas Onshore LP**

Location Name (ID) - **BROTEMARKLE 13-13 (331852)**



Photo Point H: Reference Transect 1 - Facing South



Photo Point I: Reference Transect 2 - Facing East

Vegetation Survey (Field Data Table)

Client: Kerr-McGee Oil & Gas Onshore LP
COGCC Location Name (ID): BROTEMARKLE 13-13 (331852)
Transect ID: Reclaim Transect 1 - Photo Point F
Transect Length: 354 ft.
Assessment Date: 9/1/2021
Inspector: Scott Taylor

Point	Foliar	Species	Basal	Species
1	Grass	<i>Secale cereale</i>	Non Vegetative	Litter
2	Grass	<i>Secale cereale</i>	Non Vegetative	Litter
3	Grass	<i>Secale cereale</i>	Grass	<i>Secale cereale</i>
4	Grass	<i>Secale cereale</i>	Grass	<i>Secale cereale</i>
5	Grass	<i>Secale cereale</i>	Non Vegetative	Litter
6	N/A	N/A	Non Vegetative	Litter
7	Grass	<i>Secale cereale</i>	Grass	<i>Secale cereale</i>
8	Grass	<i>Secale cereale</i>	Non Vegetative	Litter
9	Forb	<i>Lactuca serriola</i>	Non Vegetative	Litter
10	Grass	<i>Secale cereale</i>	Noxious Weed C	<i>Tribulus terrestris</i>
11	Forb	<i>Croton texensis</i>	Forb	<i>Croton texensis</i>
12	Grass	<i>Secale cereale</i>	Grass	<i>Secale cereale</i>
13	Forb	<i>Salsola L</i>	Non Vegetative	Litter
14	Grass	<i>Secale cereale</i>	Noxious Weed C	<i>Tribulus terrestris</i>
15	Grass	<i>Secale cereale</i>	Non Vegetative	Litter
16	Grass	<i>Secale cereale</i>	Grass	<i>Secale cereale</i>
17	Grass	<i>Secale cereale</i>	Grass	<i>Secale cereale</i>
18	N/A	N/A	Non Vegetative	Litter
19	Grass	<i>Secale cereale</i>	Grass	<i>Secale cereale</i>
20	Grass	<i>Secale cereale</i>	Forb	<i>Ambrosia psilostachya</i>
21	Grass	<i>Secale cereale</i>	Grass	<i>Secale cereale</i>
22	Grass	<i>Secale cereale</i>	Grass	<i>Secale cereale</i>
23	Grass	<i>Secale cereale</i>	Grass	<i>Secale cereale</i>
24	Grass	<i>Secale cereale</i>	Grass	<i>Secale cereale</i>
25	Grass	<i>Secale cereale</i>	Grass	<i>Secale cereale</i>
26	Grass	<i>Secale cereale</i>	Non Vegetative	Litter
27	Grass	<i>Secale cereale</i>	Noxious Weed C	<i>Tribulus terrestris</i>
28	Grass	<i>Secale cereale</i>	Grass	<i>Secale cereale</i>
29	Grass	<i>Secale cereale</i>	Grass	<i>Secale cereale</i>
30	Grass	<i>Secale cereale</i>	Grass	<i>Secale cereale</i>
31	Grass	<i>Secale cereale</i>	Grass	<i>Pascopyrum smithii Agropyron</i>
32	Grass	<i>Secale cereale</i>	Grass	<i>Pascopyrum smithii Agropyron</i>
33	Grass	<i>Secale cereale</i>	Grass	<i>Secale cereale</i>
34	Grass	<i>Secale cereale</i>	Grass	<i>Secale cereale</i>
35	Grass	<i>Secale cereale</i>	Grass	<i>Secale cereale</i>
36	Grass	<i>Pascopyrum smithii Agropyron</i>	Non Vegetative	Litter
37	Grass	<i>Secale cereale</i>	Noxious Weed C	<i>Tribulus terrestris</i>
38	Forb	<i>Salsola L</i>	Non Vegetative	Litter
39	Grass	<i>Secale cereale</i>	Non Vegetative	Litter
40	Forb	<i>Croton texensis</i>	Non Vegetative	Litter
41	Grass	<i>Secale cereale</i>	Grass	<i>Secale cereale</i>
42	Grass	<i>Secale cereale</i>	Grass	<i>Secale cereale</i>
43	Grass	<i>Secale cereale</i>	Grass	<i>Secale cereale</i>
44	Grass	<i>Secale cereale</i>	Forb	<i>Ambrosia psilostachya</i>
45	Grass	<i>Secale cereale</i>	Grass	<i>Secale cereale</i>
46	Grass	<i>Secale cereale</i>	Non Vegetative	Litter
47	Grass	<i>Secale cereale</i>	Non Vegetative	Litter
48	Grass	<i>Secale cereale</i>	Grass	<i>Secale cereale</i>
49	Grass	<i>Secale cereale</i>	Grass	<i>Secale cereale</i>
50	Grass	<i>Secale cereale</i>	Grass	<i>Secale cereale</i>

Vegetation Survey (Field Data Table)

Client: Kerr-McGee Oil & Gas Onshore LP
COGCC Location Name (ID): BROTEMARKLE 13-13 (331852)
Transect ID: Reclaim Transect 2 - Photo Point G
Transect Length: 318 ft.
Assessment Date: 9/1/2021
Inspector: Scott Taylor

Point	Foliar	Species	Basal	Species
1	Grass	<i>Secale cereale</i>	Grass	<i>Secale cereale</i>
2	Grass	<i>Secale cereale</i>	Non Vegetative	Litter
3	Grass	<i>Secale cereale</i>	Grass	<i>Secale cereale</i>
4	Grass	<i>Secale cereale</i>	Non Vegetative	Litter
5	Grass	<i>Secale cereale</i>	Grass	<i>Secale cereale</i>
6	Grass	<i>Secale cereale</i>	Non Vegetative	Litter
7	Grass	<i>Secale cereale</i>	Non Vegetative	Litter
8	Grass	<i>Secale cereale</i>	Non Vegetative	Litter
9	Grass	<i>Secale cereale</i>	Grass	<i>Secale cereale</i>
10	Grass	<i>Secale cereale</i>	Grass	<i>Secale cereale</i>
11	Grass	<i>Secale cereale</i>	Non Vegetative	Litter
12	Grass	<i>Secale cereale</i>	Non Vegetative	Litter
13	Grass	<i>Secale cereale</i>	Non Vegetative	Litter
14	Grass	<i>Secale cereale</i>	Grass	<i>Secale cereale</i>
15	Grass	<i>Secale cereale</i>	Grass	<i>Secale cereale</i>
16	Grass	<i>Secale cereale</i>	Grass	<i>Pascopyrum smithii Agropyron</i>
17	Grass	<i>Secale cereale</i>	Grass	<i>Sporobolus airoides</i>
18	Grass	<i>Secale cereale</i>	Grass	<i>Sporobolus airoides</i>
19	Grass	<i>Secale cereale</i>	Grass	<i>Sporobolus airoides</i>
20	Grass	<i>Secale cereale</i>	Grass	<i>Secale cereale</i>
21	Grass	<i>Secale cereale</i>	Grass	<i>Secale cereale</i>
22	Grass	<i>Secale cereale</i>	Non Vegetative	Litter
23	Grass	<i>Secale cereale</i>	Grass	<i>Secale cereale</i>
24	N/A	N/A	Non Vegetative	Litter
25	Grass	<i>Secale cereale</i>	Non Vegetative	Litter
26	Grass	<i>Secale cereale</i>	Grass	<i>Secale cereale</i>
27	Grass	<i>Secale cereale</i>	Noxious Weed C	<i>Tribulus terrestris</i>
28	Grass	<i>Secale cereale</i>	Grass	<i>Secale cereale</i>
29	Grass	<i>Secale cereale</i>	Noxious Weed C	<i>Tribulus terrestris</i>
30	Grass	<i>Secale cereale</i>	Non Vegetative	Litter
31	Grass	<i>Secale cereale</i>	Grass	<i>Sporobolus airoides</i>
32	Grass	<i>Secale cereale</i>	Grass	<i>Pascopyrum smithii Agropyron</i>
33	Grass	<i>Pascopyrum smithii Agropyron</i>	Non Vegetative	Litter
34	Grass	<i>Pascopyrum smithii Agropyron</i>	Non Vegetative	Litter
35	Grass	<i>Pascopyrum smithii Agropyron</i>	Grass	<i>Pascopyrum smithii Agropyron</i>
36	Grass	<i>Secale cereale</i>	Grass	<i>Sporobolus airoides</i>
37	Grass	<i>Secale cereale</i>	Grass	<i>Pascopyrum smithii Agropyron</i>
38	Grass	<i>Secale cereale</i>	Grass	<i>Secale cereale</i>
39	Grass	<i>Secale cereale</i>	Grass	<i>Pascopyrum smithii Agropyron</i>
40	Grass	<i>Secale cereale</i>	Grass	<i>Secale cereale</i>
41	Forb	<i>Salsola L</i>	Non Vegetative	Litter
42	Forb	<i>Salsola L</i>	Grass	<i>Secale cereale</i>
43	Grass	<i>Secale cereale</i>	Grass	<i>Sporobolus airoides</i>
44	Grass	<i>Secale cereale</i>	Grass	<i>Sporobolus airoides</i>
45	Grass	<i>Secale cereale</i>	Noxious Weed C	<i>Tribulus terrestris</i>
46	Grass	<i>Secale cereale</i>	Grass	<i>Secale cereale</i>
47	Forb	<i>Descurainia pinnata</i>	Grass	<i>Secale cereale</i>
48	Grass	<i>Secale cereale</i>	Grass	<i>Secale cereale</i>
49	Grass	<i>Secale cereale</i>	Grass	<i>Secale cereale</i>
50	Grass	<i>Secale cereale</i>	Non Vegetative	Litter

Vegetation Survey (Field Data Table)

Client: Kerr-McGee Oil & Gas Onshore LP
COGCC Location Name (ID): BROTEMARKLE 13-13 (331852)
Transect ID: Reference Transect 1 - Photo Point H
Transect Length: 333 ft.
Assessment Date: 9/1/2021
Inspector: Scott Taylor

Point	Foliar	Species	Basal	Species
1	Grass	<i>Secale cereale</i>	Grass	<i>Secale cereale</i>
2	Grass	<i>Secale cereale</i>	Grass	<i>Secale cereale</i>
3	Grass	<i>Secale cereale</i>	Non Vegetative	Litter
4	Grass	<i>Secale cereale</i>	Non Vegetative	Litter
5	N/A	N/A	Non Vegetative	Litter
6	Grass	<i>Secale cereale</i>	Non Vegetative	Litter
7	N/A	N/A	Non Vegetative	Litter
8	Grass	<i>Secale cereale</i>	Grass	<i>Secale cereale</i>
9	Grass	<i>Secale cereale</i>	Grass	<i>Secale cereale</i>
10	Grass	<i>Secale cereale</i>	Grass	<i>Sporobolus airoides</i>
11	Grass	<i>Secale cereale</i>	Grass	<i>Secale cereale</i>
12	Grass	<i>Secale cereale</i>	Forb	<i>Salsola L</i>
13	Grass	<i>Secale cereale</i>	Non Vegetative	Litter
14	Grass	<i>Secale cereale</i>	Forb	<i>Croton texensis</i>
15	Grass	<i>Secale cereale</i>	Non Vegetative	Litter
16	Grass	<i>Secale cereale</i>	Grass	<i>Secale cereale</i>
17	N/A	N/A	Non Vegetative	Litter
18	Grass	<i>Secale cereale</i>	Grass	<i>Secale cereale</i>
19	Grass	<i>Secale cereale</i>	Grass	<i>Secale cereale</i>
20	Grass	<i>Secale cereale</i>	Non Vegetative	Litter
21	Forb	<i>Salsola L</i>	Non Vegetative	Litter
22	Grass	<i>Secale cereale</i>	Grass	<i>Secale cereale</i>
23	Grass	<i>Secale cereale</i>	Grass	<i>Sporobolus airoides</i>
24	Grass	<i>Secale cereale</i>	Forb	<i>Lactuca serriola</i>
25	Grass	<i>Secale cereale</i>	Forb	<i>Salsola L</i>
26	Grass	<i>Secale cereale</i>	Grass	<i>Secale cereale</i>
27	Grass	<i>Secale cereale</i>	Grass	<i>Sporobolus airoides</i>
28	Forb	<i>Salsola L</i>	Non Vegetative	Litter
29	N/A	N/A	Non Vegetative	Litter
30	N/A	N/A	Non Vegetative	Litter
31	N/A	N/A	Noxious Weed C	<i>Tribulus terrestris</i>
32	Grass	<i>Secale cereale</i>	Non Vegetative	Litter
33	Grass	<i>Secale cereale</i>	Non Vegetative	Litter
34	Grass	<i>Secale cereale</i>	Non Vegetative	Litter
35	Grass	<i>Secale cereale</i>	Grass	<i>Sporobolus airoides</i>
36	Grass	<i>Secale cereale</i>	Grass	<i>Secale cereale</i>
37	Grass	<i>Secale cereale</i>	Forb	<i>Croton texensis</i>
38	Grass	<i>Secale cereale</i>	Non Vegetative	Litter
39	Forb	<i>Salsola L</i>	Non Vegetative	Litter
40	Grass	<i>Secale cereale</i>	Noxious Weed C	<i>Tribulus terrestris</i>
41	Forb	<i>Chenopodium album</i>	Non Vegetative	Litter
42	Grass	<i>Secale cereale</i>	Non Vegetative	Litter
43	Grass	<i>Secale cereale</i>	Non Vegetative	Litter
44	Grass	<i>Secale cereale</i>	Non Vegetative	Litter
45	Grass	<i>Secale cereale</i>	Grass	<i>Secale cereale</i>
46	Grass	<i>Secale cereale</i>	Non Vegetative	Litter
47	Grass	<i>Secale cereale</i>	Grass	<i>Secale cereale</i>
48	Grass	<i>Secale cereale</i>	Forb	<i>Croton texensis</i>
49	N/A	N/A	Non Vegetative	Litter
50	Grass	<i>Secale cereale</i>	Non Vegetative	Litter

Vegetation Survey (Field Data Table)

Client: Kerr-McGee Oil & Gas Onshore LP
COGCC Location Name (ID): BROTEMARKLE 13-13 (331852)
Transect ID: Reference Transect 2 - Photo Point I
Transect Length: 310 ft.
Assessment Date: 9/1/2021
Inspector: Scott Taylor

Point	Foliar	Species	Basal	Species
1	Grass	<i>Secale cereale</i>	Non Vegetative	Litter
2	Grass	<i>Secale cereale</i>	Non Vegetative	Litter
3	Grass	<i>Secale cereale</i>	Grass	<i>Secale cereale</i>
4	Forb	<i>Salsola L</i>	Non Vegetative	Litter
5	Grass	<i>Secale cereale</i>	Non Vegetative	Litter
6	N/A	N/A	Noxious Weed C	<i>Tribulus terrestris</i>
7	Grass	<i>Secale cereale</i>	Non Vegetative	Litter
8	Forb	<i>Chenopodium album</i>	Grass	<i>Secale cereale</i>
9	N/A	N/A	Noxious Weed C	<i>Tribulus terrestris</i>
10	Grass	<i>Secale cereale</i>	Non Vegetative	Litter
11	Forb	<i>Descurainia pinnata</i>	Non Vegetative	Litter
12	Grass	<i>Secale cereale</i>	Non Vegetative	Litter
13	Grass	<i>Secale cereale</i>	Non Vegetative	Litter
14	Grass	<i>Secale cereale</i>	Noxious Weed C	<i>Tribulus terrestris</i>
15	Grass	<i>Secale cereale</i>	Non Vegetative	Litter
16	Forb	<i>Salsola L</i>	Non Vegetative	Litter
17	Grass	<i>Secale cereale</i>	Noxious Weed C	<i>Tribulus terrestris</i>
18	Grass	<i>Secale cereale</i>	Non Vegetative	Litter
19	Grass	<i>Secale cereale</i>	Non Vegetative	Litter
20	Grass	<i>Secale cereale</i>	Grass	<i>Secale cereale</i>
21	Grass	<i>Secale cereale</i>	Non Vegetative	Litter
22	Grass	<i>Secale cereale</i>	Non Vegetative	Litter
23	Forb	<i>Helianthus petiolaris</i>	Grass	<i>Secale cereale</i>
24	Grass	<i>Secale cereale</i>	Non Vegetative	Litter
25	Grass	<i>Secale cereale</i>	Noxious Weed C	<i>Tribulus terrestris</i>
26	Grass	<i>Secale cereale</i>	Noxious Weed C	<i>Tribulus terrestris</i>
27	Grass	<i>Secale cereale</i>	Non Vegetative	Litter
28	Grass	<i>Secale cereale</i>	Grass	<i>Secale cereale</i>
29	Grass	<i>Secale cereale</i>	Non Vegetative	Litter
30	Grass	<i>Secale cereale</i>	Noxious Weed C	<i>Tribulus terrestris</i>
31	Forb	<i>Croton texensis</i>	Noxious Weed C	<i>Tribulus terrestris</i>
32	Grass	<i>Secale cereale</i>	Non Vegetative	Litter
33	Grass	<i>Secale cereale</i>	Noxious Weed C	<i>Tribulus terrestris</i>
34	Grass	<i>Secale cereale</i>	Forb	<i>Salsola L</i>
35	Grass	<i>Secale cereale</i>	Non Vegetative	Litter
36	Grass	<i>Secale cereale</i>	Noxious Weed C	<i>Tribulus terrestris</i>
37	Forb	<i>Salsola L</i>	Non Vegetative	Litter
38	Grass	<i>Secale cereale</i>	Non Vegetative	Litter
39	Forb	<i>Ambrosia psilostachya</i>	Noxious Weed C	<i>Tribulus terrestris</i>
40	Noxious Weed B	<i>Onopordum acanthium</i>	Noxious Weed B	<i>Onopordum acanthium</i>
41	Grass	<i>Secale cereale</i>	Non Vegetative	Litter
42	Grass	<i>Secale cereale</i>	Non Vegetative	Litter
43	Forb	<i>Descurainia pinnata</i>	Grass	<i>Secale cereale</i>
44	Grass	<i>Secale cereale</i>	Grass	<i>Secale cereale</i>
45	Grass	<i>Secale cereale</i>	Grass	<i>Secale cereale</i>
46	Grass	<i>Secale cereale</i>	Grass	<i>Secale cereale</i>
47	Grass	<i>Secale cereale</i>	Grass	<i>Secale cereale</i>
48	Grass	<i>Secale cereale</i>	Grass	<i>Secale cereale</i>
49	Grass	<i>Secale cereale</i>	Non Vegetative	Litter
50	Grass	<i>Secale cereale</i>	Grass	<i>Secale cereale</i>