

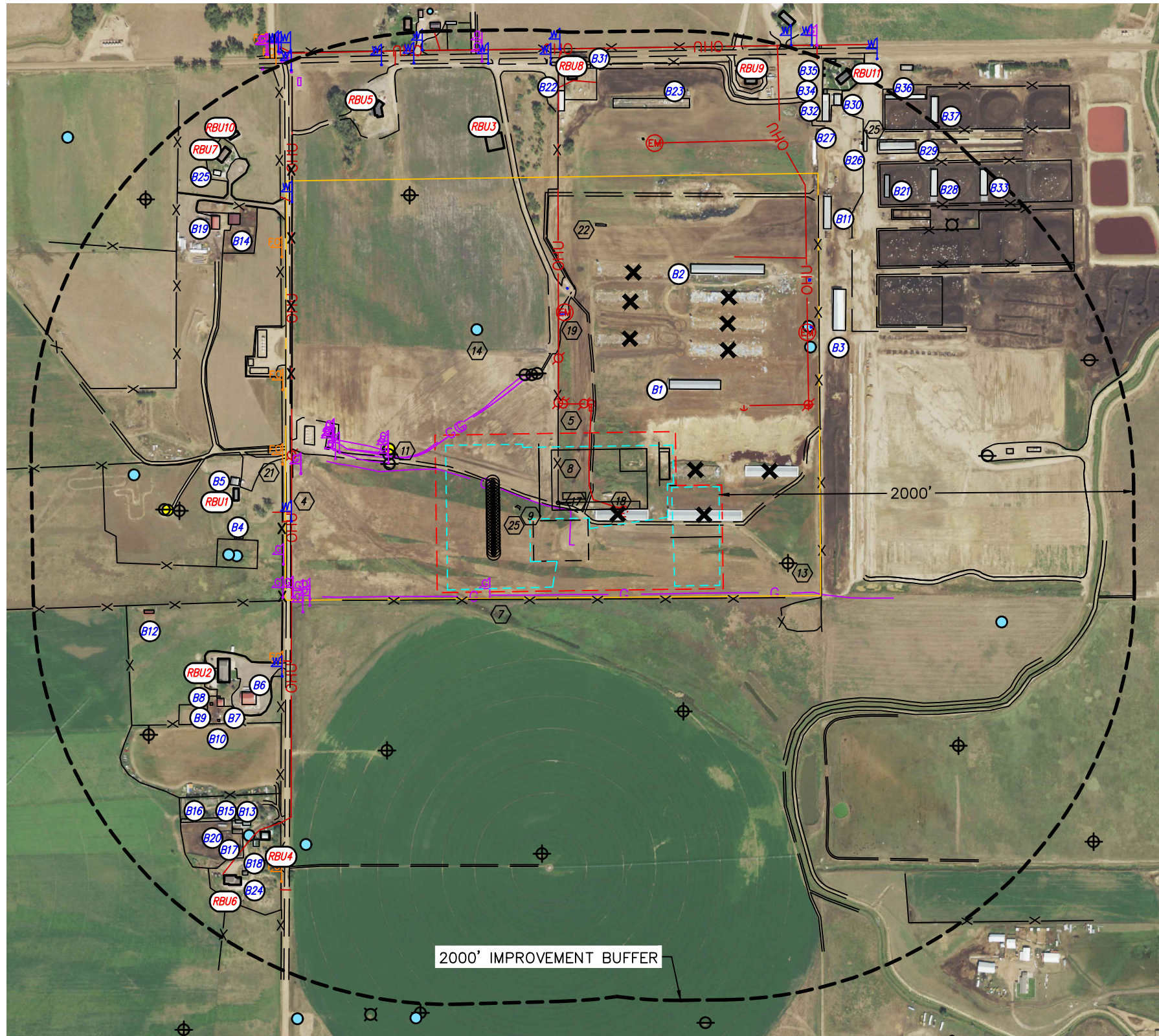


Lat40°, Inc. 6250 W. 10th Street, Unit 2, Greeley, CO 970-515-5294

LOCATION DRAWING

DRAKE 4N64W17 1-24 PAD
PDC ENERGY

SECTION: 17
TOWNSHIP: 4N
RANGE: 64W
6TH. P.M.
WELD COUNTY, CO



ID	IMPROVEMENT	DISTANCES/BEARING (MEASURED FROM WORKING PAD SURFACE)
B	BUILDINGS	B1 271' N, B2 834' N, B3 951' NE, B4 983' W, B5 994' W, B6 1047' SW, B7 1199' SW, B8 1211' SW, B9 1257' SW, B10 1264' SW, B11 1273' NE, B12 1420' W, B13 1459' SW, B14 1456' NW, B15 1486' SW, B16 1503' SW, B17 1508' SW, B18 1508' SW, B19 1509' NW, B20 1520' SW, B21 1573' NE, B22 1621' N, B23 1632' N, B24 1664' SW, B25 1694' NW, B26 1715' NE, B27 1721' NE, B28 1730' NE, B29 1738' NE, B30 1816' NE, B31 1824' N, B32 1845' NE, B33 1911' NE, B34 1923' NE, B35 1956' NE, B36 1959' NE, B37 1995' NE
BU/RBU	BUILDING UNIT/RESIDENTIAL BUILDING UNITS	RBU1 1001' W, RBU2 1103' SW, RBU3 1416' N, RBU4 1450' SW, RBU5 1617' NW, RBU6 1708' SW, RBU7 1739' NW, RBU8 1775' N, RBU9 1778' NE, RBU10 1801' NW, RBU11 1921' NE
1	HIGH OCCUPANCY BUILDING UNITS	NA
2	SCHOOL FACILITY	NA
3	DESIGNATED OUTSIDE ACTIVITY AREA	NA
4	PUBLIC ROAD	749' W, 1861' N
5	ABOVE GROUND UTILITY	206' N, 418' NE, 647' N, 742' W, 747' W, 829' SW, 956' NE, 1391' NW, 1459' N, 1634' SW, 1733' N, 1851' NW, 1905' N, 1908' N, 1987' NE
6	RAILROAD	NA
7	PROPERTY LINE	43' S, 486' E, 771' W, 1287' N
8	FENCES	1-INSIDE LOCATION, 47' S, 315' SE, 489' E, 740' W, 788' W, 798' W, 911' W, 1026' SW, 1151' NE, 1269' SW, 1315' NE, 1329' NW, 1430' NW, 1529' NE, 1601' NW, 1671' N, 1718' NE, 1835' NE, 1843' NE, 1906' N
9	PIPELINES/PIPELINE MARKERS/FLOWLINE	1-INSIDE LOCATION, 31' S, 26' NW, 27' NW, 47' S, 35' NW, 276' W, 3-277' W, 2-279' W, 513' W, 531' W, 539' W, 540' W, 2-544' W, 547' W, 666' W, 669' SW, 699' W, 700' W, 707' SW, 747' W, 748' W, 791' W, 796' W, 1851' N, 1871' NW, 1906' N, 1950' NW
10	MINES	NA
11	PRODUCING/DRILLING OIL AND GAS WELLS AND FACILITIES	271' W, 272' W, 275' W, 335' N, 338' N, 349' N, 537' NW, 546' W, 561' W, 565' W, 631' W, 921' NW, 962' NW, 1003' NW, 1303' NE, 1344' W, 1360' W, 1396' NE, 1497' NE, 1691' NE, 1889' NE
12	INJECTION WELLS AND FACILITIES	NA
13	PLUGGED/ABANDONED/SHUT IN OIL AND GAS WELLS	329' E, 606' S, 828' SW, 1220' N, 1285' S, 1288' W, 1387' SE, 1603' SW, 1871' NW
14	WATER WELLS - GIS DATA	556' N, 816' NE, 871' NE, 1014' W, 1054' W, 1372' SE, 1406' SW, 1505' W, 1523' SW
15	WATER WELLS - SURVEYED LOCATION	NA
16	SEWER/SEPTIC MANHOLES	NA
17	PRIVATE ROAD	2-INSIDE LOCATION, 371' N, 692' E, 738' SE, 783' SE, 770' W, 818' N, 849' SE, 856' SW, 863' NW, 986' NE, 1243' SW, 1335' NW, 1338' S, 1448' SW, 1532' SE, 1514' NW, 1684' NE, 1738' NE, 1827' E, 2-1887' N, 1930' NE, 1978' NE
18	UTILITIES - ELECTRIC	2-INSIDE LOCATION, 204' N, 634' N, 847' NE, 1459' N
19	UTILITIES - WATER/IRRIGATION	640' N, 759' N, 749' W, 872' NE, 902' SW, 1028' NE, 1391' NW, 1461' N, 1841' N, 1848' N, 1852' N, 1863' NW, 1912' N, 1920' N, 1958' NW
20	UTILITIES - TELEPHONE	NA
21	UTILITIES - FIBER OPTIC	787' W, 830' NW, 889' SW, 1204' NW, 1619' SW, 1999' NW
22	UTILITIES - PROPANE/GAS TANK	1061' N
23	UTILITIES - OTHER	NA
24	BRIDGES	NA
25	MISCELLANEOUS	1-INSIDE LOCATION (CONCRETE PAD), 1691' NE (SCALE)

2000' IMPROVEMENT BUFFER

NOTE:
1. SEE HYDROLOGY MAP FOR SURFACE WATER IMPROVEMENTS.
2. VISIBLE IMPROVEMENTS SHOWN AND LISTED HEREON THAT ARE LYING OUTSIDE THE SURFACE PROPERTY MAY HAVE BEEN OBTAINED FROM THE AERIAL PHOTO AND OTHER PUBLICLY AVAILABLE DATA. THE ACCURACY AND COMPLETENESS OF SAID IMPROVEMENTS MAY NOT HAVE BEEN VERIFIED BY LAT40, INC. EXISTING CONDITIONS MAY DIFFER FROM WHAT IS SHOWN.

LEGEND

SURFACE PROPERTY	ID DESIGNATION	PRODUCING OIL & GAS WELL
WORKING PAD SURFACE	PROPOSED WELL	SHUT IN OIL & GAS WELL
OIL AND GAS LOCATION	WATER MARKER	TEMPORARY ABANDONED OIL & GAS WELL
GAS LINE	FIBER OPTIC MARKER	INJECTION WELL
UNDERGROUND ELECTRIC	GAS MARKER	PLUGGED AND ABANDONED OIL & GAS WELL
OVERHEAD UTILITY	GAS VALVE	DRILLED AND ABANDONED OIL & GAS WELL
FENCE	ELECTRIC SERVICE	DRILLING OIL & GAS WELL
BUILDING	POWER POLE	WATER WELL (GIS DATA)
BUILDING UNIT	GUY WIRE	
RESIDENTIAL BUILDING UNIT	TURKEY SHED REMOVED OR TO BE REMOVED	

DATA SOURCE: COGCC

0 600
1"=600'
DATE: 9/21/2021
PROJECT#: 2019029