

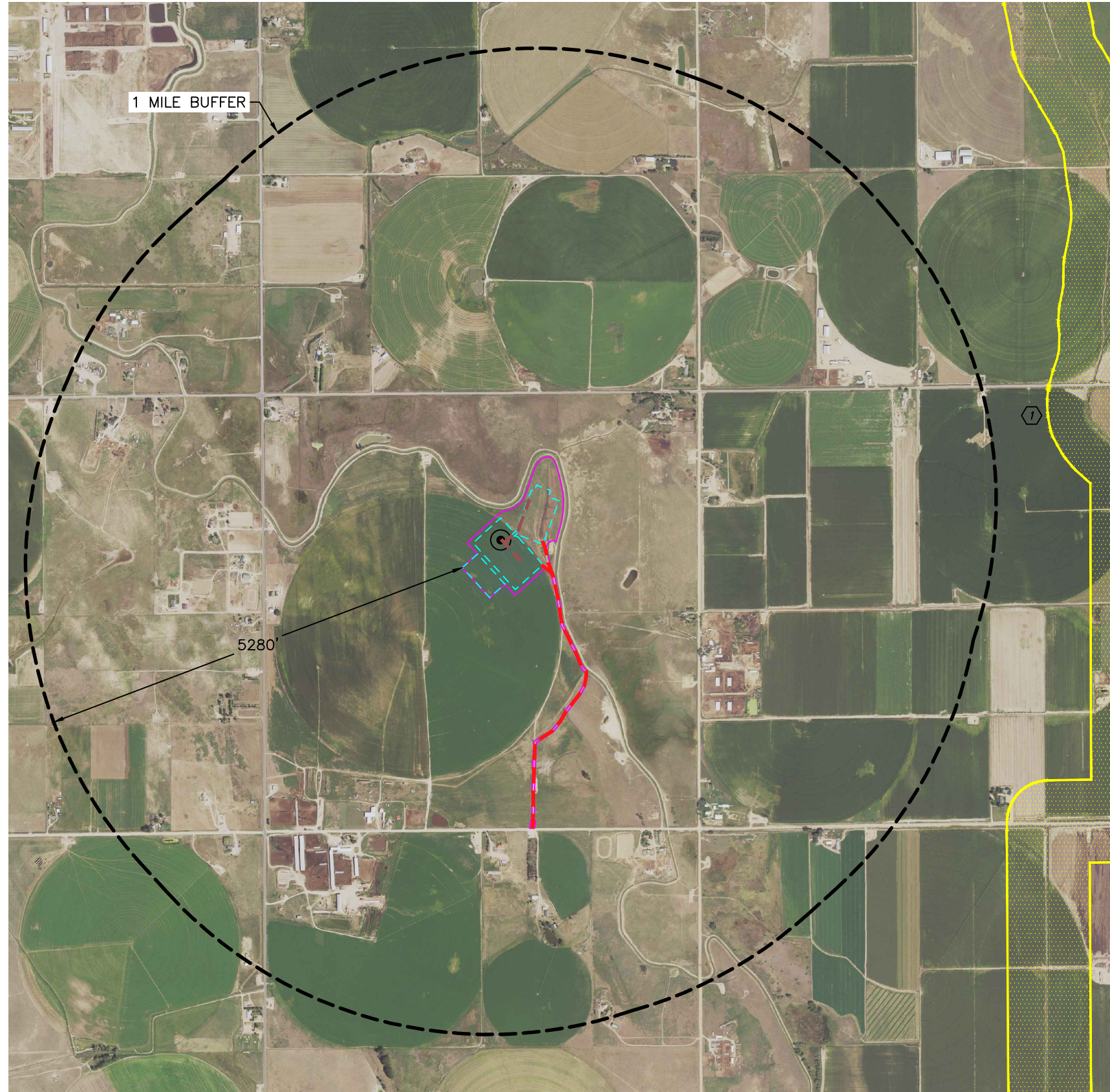


Lat40°, Inc. 6250 W. 10th Street, Unit 2, Greeley, CO 970-515-5294

WILDLIFE HABITAT DRAWING

GEORGE 4N64W21 1-24 PAD
PDC ENERGY

SECTION: 21
TOWNSHIP: 4N
RANGE: 64W
6TH. P.M.
WELD COUNTY, CO



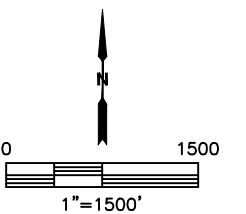
WILDLIFE HABITAT:
 (MEASURED FROM EDGE OF WORKING PAD SURFACE)
 NO WILDLIFE HABITAT IDENTIFIED
 WITHIN 1 MILE BUFFER.

ID	DISTANCE (FT)	DIRECTION	DESCRIPTION
1	±5993	NE	Aquatic Native Species Conservation Water - 500 feet

- LEGEND
- PROPOSED WELL LOCATION
 - ID DESIGNATION
 - WORKING PAD SURFACE
 - AREA OF DISTURBANCE
 - HIGH PRIORITY HABITAT
 - ACCESS ROAD
 - PROPOSED FLOWLINE CORRIDOR

NOTE:
 THIS MAP IS A COMPILATION OF PUBLICLY AVAILABLE DATA. THE ACCURACY AND COMPLETENESS OF SAID DATA HAD NOT BEEN VERIFIED BY LAT40, INC. EXISTING CONDITIONS MAY DIFFER FROM WHAT IS SHOWN.

DATA SOURCE: COGCC, USFWS, ECOS, CPW



DATE: 11/5/2021
PROJECT#: 2019049