



Lat40°, Inc. 6250 W. 10th Street, Unit 2, Greeley, CO 970-515-5294

# RELATED LOCATION AND FLOWLINE MAP

**DRAKE 4N64W17 1-24 PAD, GEORGE 4N64W21 1-24 PAD & HEN 4N64W8**

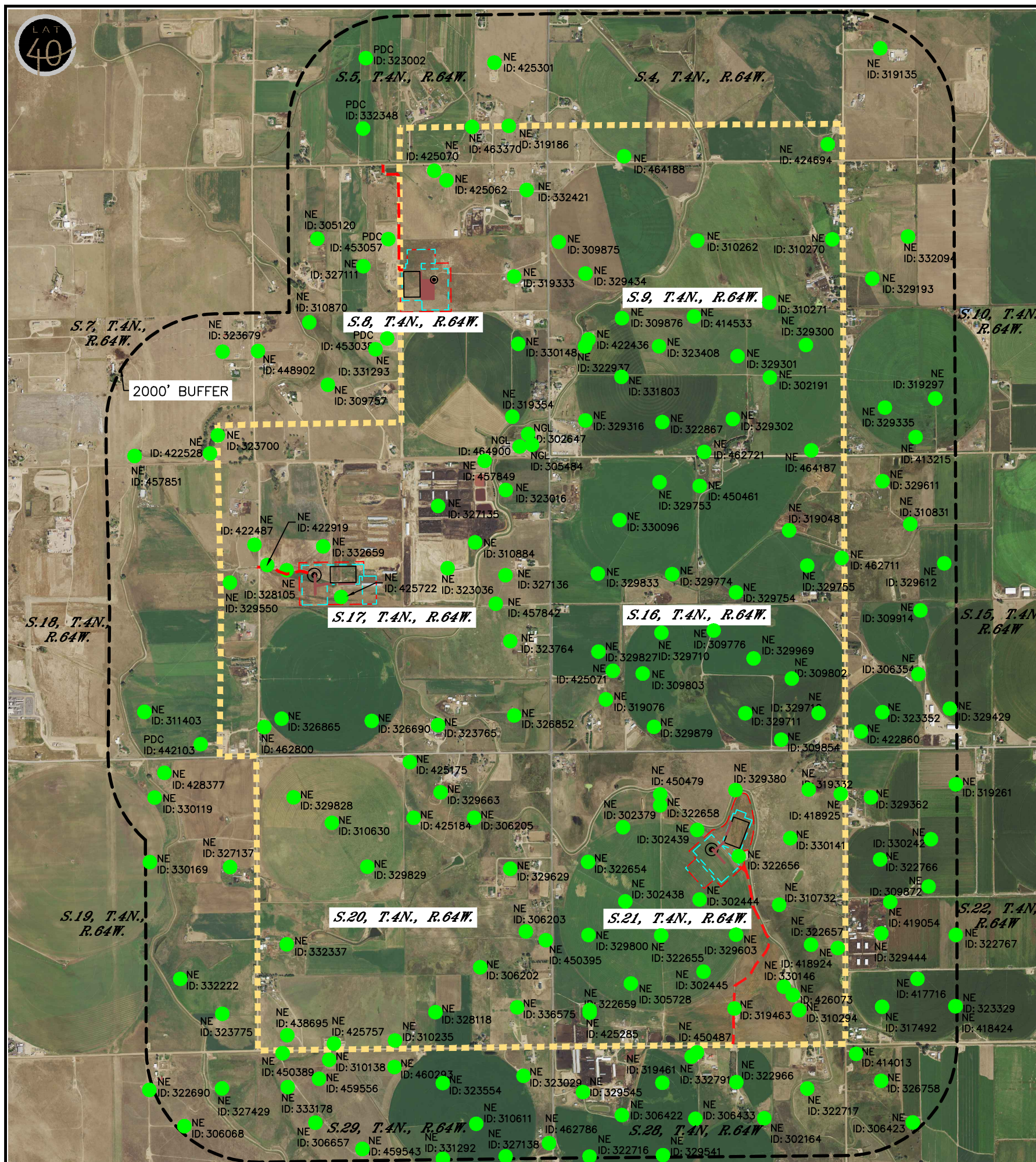
**1-24 PAD**

**PDC ENERGY, INC.**

**OGDP: KENOSHA**

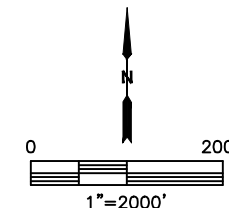
2A DOC. NO. 402630099, 402631020, 402630121

SECTION: 8,17,21  
TOWNSHIP: 4N  
RANGE: 64W  
6TH. P.M.  
WELD COUNTY, CO



- NOTE:
- 1) NO OFFSITE FLOWLINES PROPOSED.
  - 2) THIRD PARTY CUSTODY TRANSFER OCCURS AT LACT FOR OIL.
  - 3) THIRD PARTY CUSTODY TRANSFER OCCURS AT METER FOR GAS.

- LEGEND
- LOCATION ACTIVE
  - PROPOSED WELL
  - ACCESS ROAD
  - DSU BOUNDARY
  - PROPOSED FLOWLINE CORRIDOR OIL AND GAS TAKEAWAY
  - 2000' BUFFER
  - PROPOSED PRODUCTION FACILITY
  - WORKING PAD SURFACE
  - OIL AND GAS LOCATION
- NE = NOBLE ENERGY INC  
PDC = PDC ENERGY INC



THIS MAP IS A COMPILATION OF PUBLICLY AVAILABLE DATA. THE ACCURACY AND COMPLETENESS OF SAID DATA HAD NOT BEEN VERIFIED BY LAT40, INC. EXISTING CONDITIONS MAY DIFFER FROM WHAT IS SHOWN.

DATA SOURCE: COGCC

DATE: 8/11/2021  
PROJECT#: 2021121



Lat40°, Inc. 6250 W. 10th Street, Unit 2, Greeley, CO 970-515-5294

# RELATED LOCATION AND FLOWLINE MAP

GEORGE 4N64W21 1-24 PAD  
PDC ENERGY

SECTION: 21  
TOWNSHIP: 4N  
RANGE: 64W  
6TH. P.M.  
WELD COUNTY, CO

ID	LOCATION ID	LOCATION NAME	OPERATOR
600	302164	NOVACEK C-64N64W	NOBLE ENERGY INC
601	302378	THOMPSON C-64N64W	NOBLE ENERGY INC
602	302379	HANSCOME C-64N64W	NOBLE ENERGY INC
603	302439	HANSCOME C-64N64W	NOBLE ENERGY INC
604	302445	HANSCOME C-64N64W	NOBLE ENERGY INC
605	302438	HANSCOME C-64N64W	NOBLE ENERGY INC
606	302444	HANSCOME C-64N64W	NOBLE ENERGY INC
607	305728	JULIE C-64N64W	NOBLE ENERGY INC
608	305963	NOVACEK C-64N64W	NOBLE ENERGY INC
609	306068	JOHNSON-64N64W	NOBLE ENERGY INC
610	306354	STOCKLEY C-64N64W	NOBLE ENERGY INC
611	306422	HANSCOME C-64N64W	NOBLE ENERGY INC
612	306657	JOHNSON C-64N64W	NOBLE ENERGY INC
613	309776	RYANN STATE C-64N64W	NOBLE ENERGY INC
614	309802	RYANN STATE C-64N64W	NOBLE ENERGY INC
615	309803	RYANN STATE C-64N64W	NOBLE ENERGY INC
616	309914	SATER C-64N64W	NOBLE ENERGY INC
617	310138	JOHNSON C-64N64W	NOBLE ENERGY INC
618	310235	Balboa C	NOBLE ENERGY INC
619	310294	NOVACEK C	NOBLE ENERGY INC
620	310596	HANSCOME C-64N64W	NOBLE ENERGY INC
621	310884	MORIAH-64N64W	NOBLE ENERGY INC
622	311403	FRICK-64N64W	NOBLE ENERGY INC
623	306202	BALBOA C-64N64W	NOBLE ENERGY INC
624	306203	BALBOA C-64N64W	NOBLE ENERGY INC
625	306205	LONG C-64N64W	NOBLE ENERGY INC
626	306423	HERBST C-64N64W	NOBLE ENERGY INC
627	306433	HANSCOME C-64N64W	NOBLE ENERGY INC
628	309831	HANSCOME C-64N64W	NOBLE ENERGY INC
629	309854	RYANN STATE C-64N64W	NOBLE ENERGY INC
630	309872	BORYS C-64N64W	NOBLE ENERGY INC
631	309910	HERBST C-64N64W	NOBLE ENERGY INC
632	310611	JOHNSON-64N64W	NOBLE ENERGY INC
633	310630	PREBISH-64N64W	NOBLE ENERGY INC
634	310732	HAMLIN C-64N64W	NOBLE ENERGY INC
635	319261	Lang	NOBLE ENERGY INC
636	319332	Cricket - Multi	NOBLE ENERGY INC
637	319463	LEONARD-64N64W	NOBLE ENERGY INC
638	322654	LEONARD-64N64W	NOBLE ENERGY INC
639	322655	LEONARD-64N64W	NOBLE ENERGY INC
640	322658	CHENOWETH-64N64W	NOBLE ENERGY INC
641	322717	NIX-64N64W	NOBLE ENERGY INC
642	323029	CPC-JOHNSON-64N64W	NOBLE ENERGY INC
643	323329	DINNEL	NOBLE ENERGY INC
644	323361	HERBST, CONRAD-64N64W	NOBLE ENERGY INC
645	323362	CONRAD HERBST-64N64W	NOBLE ENERGY INC
646	323764	OCOMA-64N64W	NOBLE ENERGY INC
647	326690	UPRR OCOMA-64N64W	NOBLE ENERGY INC
648	326758	LEHFELDT-64N64W	NOBLE ENERGY INC
649	326842	VICTOR C-64N64W	NOBLE ENERGY INC
650	326852	OCOMA-64N64W	NOBLE ENERGY INC

ID	LOCATION ID	LOCATION NAME	OPERATOR
651	327429	LOUSTALET-64N64W	NOBLE ENERGY INC
652	327430	LOUSTALET-64N64W	NOBLE ENERGY INC
653	328105	Pluss	NOBLE ENERGY INC
654	329429	LANG-64N64W	NOBLE ENERGY INC
655	329444	CANTRELL-64N64W	NOBLE ENERGY INC
656	329479	THOMPSON-64N64W	NOBLE ENERGY INC
657	329541	HANSCOME-64N64W	NOBLE ENERGY INC
658	329545	HANSCOME-64N64W	NOBLE ENERGY INC
659	329603	LEONARD-64N64W	NOBLE ENERGY INC
660	329710	STATE-64N64W	NOBLE ENERGY INC
661	329754	STATE-64N64W	NOBLE ENERGY INC
662	329774	STATE-64N64W	NOBLE ENERGY INC
663	329800	KLEIN-64N64W	NOBLE ENERGY INC
664	329828	AGRICULTURAL PRODUCTS INC-64N64W	NOBLE ENERGY INC
665	331292	JOHNSON-64N64W	NOBLE ENERGY INC
666	332222	OSTER-64N64W	NOBLE ENERGY INC
667	332659	SH FARMS C-64N64W	NOBLE ENERGY INC
668	332791	HANSCOME C-64N64W	NOBLE ENERGY INC
669	333178	VICTOR C-64N64W	NOBLE ENERGY INC
670	336575	BALBOA-64N64W	NOBLE ENERGY INC
671	317492	DINNEL	NOBLE ENERGY INC
672	319076	STATE A-64N64W	NOBLE ENERGY INC
673	319461	HANSCOME, C-64N64W	NOBLE ENERGY INC
674	322656	LEONARD-64N64W	NOBLE ENERGY INC
675	322657	Cricket	NOBLE ENERGY INC
676	322659	HANSOMCE C	NOBLE ENERGY INC
677	322690	LOUSTALET-64N64W	NOBLE ENERGY INC
678	322716	HANSCOME, C-64N64W	NOBLE ENERGY INC
679	322766	LYMAN-64N64W	NOBLE ENERGY INC
680	322767	CANTRELL-64N64W	NOBLE ENERGY INC
681	322966	NOVACEK-64N64W	NOBLE ENERGY INC
682	323036	CPC-HARLESS-64N64W	NOBLE ENERGY INC
683	323352	CLEMONS-64N64W	NOBLE ENERGY INC
684	323554	JOHNSON R C-64N64W	NOBLE ENERGY INC
685	323680	VICTOR C-64N64W	NOBLE ENERGY INC
686	323760	VICTOR C-64N64W	NOBLE ENERGY INC
687	323761	OCOMA-64N64W	NOBLE ENERGY INC
688	323765	OCOMA-64N64W	NOBLE ENERGY INC
689	323775	VICTOR C-64N64W	NOBLE ENERGY INC
690	326865	OCOMA-64N64W	NOBLE ENERGY INC
691	326970	LOUSTALET-64N64W	NOBLE ENERGY INC
692	327136	HARLESS PM C-64N64W	NOBLE ENERGY INC
693	327137	OSTER PM C-64N64W	NOBLE ENERGY INC
694	327138	JOHNSON PM C-64N64W	NOBLE ENERGY INC
695	328009	LEHFELDT-64N64W	NOBLE ENERGY INC
696	328011	Herbst	NOBLE ENERGY INC
697	328118	BALBOS-64N64W	NOBLE ENERGY INC
698	328395	UPRC-64N64W	NOBLE ENERGY INC
699	329362	JOHNSTON-64N64W	NOBLE ENERGY INC
700	329380	CHENOWETH-64N64W	NOBLE ENERGY INC
701	329478	THOMPSON-64N64W	NOBLE ENERGY INC

ID	LOCATION ID	LOCATION NAME	OPERATOR
702	329550	FRICK PC C	NOBLE ENERGY INC
703	329629	TODD-64N64W	NOBLE ENERGY INC
704	329663	TODD-64N64W	NOBLE ENERGY INC
705	329711	STATE-64N64W	NOBLE ENERGY INC
706	329712	STATE-64N64W	NOBLE ENERGY INC
707	329755	STATE-64N64W	NOBLE ENERGY INC
708	329827	STATE C	NOBLE ENERGY INC
709	329829	API-64N64W	NOBLE ENERGY INC
710	329833	STATE-64N64W	NOBLE ENERGY INC
711	329879	STATE-64N64W	NOBLE ENERGY INC
712	329969	STATE-64N64W	NOBLE ENERGY INC
713	330119	MOORE UPRC C-64N64W	NOBLE ENERGY INC
714	330141	TRAVELERS-64N64W	NOBLE ENERGY INC
715	330146	LEONARD-64N64W	NOBLE ENERGY INC
716	330169	MILLER-64N64W	NOBLE ENERGY INC
717	330242	HERBST-64N64W	NOBLE ENERGY INC
718	330990	LOUSTALET-64N64W	NOBLE ENERGY INC
719	332337	HIGHLAND-64N64W	NOBLE ENERGY INC
720	414013	HERBST C	NOBLE ENERGY INC
721	425175	LONG C	NOBLE ENERGY INC
722	425722	SH C	NOBLE ENERGY INC
723	425757	Klingenberg	NOBLE ENERGY INC
724	442103	Collins	PDC ENERGY INC
725	447188	HERBST C27-20,21, CONRAD 1,2	NOBLE ENERGY INC
726	450395	Balboa Tank Battery	NOBLE ENERGY INC
727	459511	C22-06	NOBLE ENERGY INC
728	459543	C29-06	NOBLE ENERGY INC
729	459556	C29-04	NOBLE ENERGY INC
730	460293	C29-03	NOBLE ENERGY INC
731	462711	Ryann State	NOBLE ENERGY INC
732	462786	Johnson	NOBLE ENERGY INC
733	417716	HERBST C	NOBLE ENERGY INC
734	418424	DINNEL	NOBLE ENERGY INC
735	418798	Lang	NOBLE ENERGY INC
736	418924	Cricket C	NOBLE ENERGY INC
737	418925	Cricket	NOBLE ENERGY INC
738	419054	HERBST C	NOBLE ENERGY INC
739	422487	FRICK PC C	NOBLE ENERGY INC
740	422860	STOCKLEY	NOBLE ENERGY INC
741	422919	Pluss	NOBLE ENERGY INC
742	425071	STATE C	NOBLE ENERGY INC
743	425184	LONG C	NOBLE ENERGY INC
744	425285	HANSCOME C	NOBLE ENERGY INC
745	426073	NOVACEK C	NOBLE ENERGY INC
746	438695	Klingenberg	NOBLE ENERGY INC
747	450389	Victor TB	NOBLE ENERGY INC
748	450479	Hanscome C #21-19	NOBLE ENERGY INC
749	450487	Hanscome	NOBLE ENERGY INC
750	457842	HARLESS T4N R64W S17 L03	NOBLE ENERGY INC
751	459782	C30-07	NOBLE ENERGY INC
752	462800	Angela Ocoma	NOBLE ENERGY INC

THIS MAP IS A COMPILATION OF PUBLICLY AVAILABLE DATA. THE ACCURACY AND COMPLETENESS OF SAID DATA HAD NOT BEEN VERIFIED BY LAT40, INC. EXISTING CONDITIONS MAY DIFFER FROM WHAT IS SHOWN.

DATA SOURCE: COGCC



Lat40°, Inc. 6250 W. 10th Street, Unit 2, Greeley, CO 970-515-5294

# RELATED LOCATION AND FLOWLINE MAP

**DRAKE 4N64W17 1-24 PAD**  
**PDC ENERGY**

SECTION: 17  
TOWNSHIP: 4N  
RANGE: 64W  
6TH. P.M.  
WELD COUNTY, CO

ID	LOCATION ID	LOCATION NAME	OPERATOR
600	302191	ALTER C-64N64W	NOBLE ENERGY INC
601	302379	HANSCOME C-64N64W	NOBLE ENERGY INC
602	302439	HANSCOME C-64N64W	NOBLE ENERGY INC
603	302438	HANSCOME C-64N64W	NOBLE ENERGY INC
604	302444	HANSCOME C-64N64W	NOBLE ENERGY INC
605	302647	NGL MAJOR FACILITY	NGL WATER SOLUTIONS DJ LLC
606	305120	COX C-64N64W	NOBLE ENERGY INC
607	305484	NGL	NGL WATER SOLUTIONS DJ LLC
608	305947	FARR C-64N64W	NOBLE ENERGY INC
609	306354	STOCKLEY C-64N64W	NOBLE ENERGY INC
610	309757	ENGLAND-64N64W	NOBLE ENERGY INC
611	309776	RYANN STATE C-64N64W	NOBLE ENERGY INC
612	309802	RYANN STATE C-64N64W	NOBLE ENERGY INC
613	309803	RYANN STATE C-64N64W	NOBLE ENERGY INC
614	309875	SLEDGE C-64N64W	NOBLE ENERGY INC
615	309914	SATER C-64N64W	NOBLE ENERGY INC
616	310270	REINICK C-64N64W	NOBLE ENERGY INC
617	310271	REINICK C-64N64W	NOBLE ENERGY INC
618	310831	ROHR C-64N64W	NOBLE ENERGY INC
619	310884	MORIAH-64N64W	NOBLE ENERGY INC
620	311403	FRICK-64N64W	NOBLE ENERGY INC
621	306202	BALBOA C-64N64W	NOBLE ENERGY INC
622	306203	BALBOA C-64N64W	NOBLE ENERGY INC
623	306205	LONG C-64N64W	NOBLE ENERGY INC
624	309854	RYANN STATE C-64N64W	NOBLE ENERGY INC
625	309872	BORYS C-64N64W	NOBLE ENERGY INC
626	309876	AMANDA ALTER C-64N64W	NOBLE ENERGY INC
627	310262	REINICK C-64N64W	NOBLE ENERGY INC
628	310630	PREBISH-64N64W	NOBLE ENERGY INC
629	310732	HAMLIN C-64N64W	NOBLE ENERGY INC
630	310870	ENGLAND-64N64W	NOBLE ENERGY INC
631	319261	Lang	NOBLE ENERGY INC
632	319297	BARTON C (MULTI-WELL)	NOBLE ENERGY INC
633	319332	Cricket - Multi	NOBLE ENERGY INC
634	322654	LEONARD-64N64W	NOBLE ENERGY INC
635	322655	LEONARD-64N64W	NOBLE ENERGY INC
636	322658	CHENOWETH-64N64W	NOBLE ENERGY INC
637	322867	JOHNSON, VERN-64N64W	NOBLE ENERGY INC
638	323408	JOHNSON-64N64W	NOBLE ENERGY INC
639	323679	OCOMA-64N64W	NOBLE ENERGY INC
640	323764	OCOMA-64N64W	NOBLE ENERGY INC
641	326690	UPRR OCOMA-64N64W	NOBLE ENERGY INC
642	326842	VICTOR C-64N64W	NOBLE ENERGY INC
643	326852	OCOMA-64N64W	NOBLE ENERGY INC
644	327112	FRY PM C-64N64W	NOBLE ENERGY INC
645	327135	HARLESS PM C-64N64W	NOBLE ENERGY INC
646	328105	Pluss	NOBLE ENERGY INC
647	328769	FREEDOM II C-64N64W	NOBLE ENERGY INC
648	329300	HAGEN-64N64W	NOBLE ENERGY INC
649	329301	HAGEN-64N64W	NOBLE ENERGY INC
650	329302	HAGEN-64N64W	NOBLE ENERGY INC

ID	LOCATION ID	LOCATION NAME	OPERATOR
651	329316	MARK ALTER C	NOBLE ENERGY INC
652	329429	LANG-64N64W	NOBLE ENERGY INC
653	329434	SMITH-64N64W	NOBLE ENERGY INC
654	329444	CANTRELL-64N64W	NOBLE ENERGY INC
655	329603	LEONARD-64N64W	NOBLE ENERGY INC
656	329611	ROHR-64N64W	NOBLE ENERGY INC
657	329710	STATE-64N64W	NOBLE ENERGY INC
658	329753	STATE-64N64W	NOBLE ENERGY INC
659	329754	STATE-64N64W	NOBLE ENERGY INC
660	329774	STATE-64N64W	NOBLE ENERGY INC
661	329800	KLEIN-64N64W	NOBLE ENERGY INC
662	329828	AGRICULTURAL PRODUCTS INC-64N64W	NOBLE ENERGY INC
663	330096	STATE-64N64W	NOBLE ENERGY INC
664	331293	RYDGREN-64N64W	NOBLE ENERGY INC
665	331803	ALTER C-64N64W	NOBLE ENERGY INC
666	331808	OCOMA C-64N64W	NOBLE ENERGY INC
667	332116	BROOMFIELD-64N64W	NOBLE ENERGY INC
668	332659	SH FARMS C-64N64W	NOBLE ENERGY INC
669	319048	STATE A-64N64W	NOBLE ENERGY INC
670	319076	STATE A-64N64W	NOBLE ENERGY INC
671	319333	BENNER-64N64W	NOBLE ENERGY INC
672	319354	GEHRING-64N64W	NOBLE ENERGY INC
673	322656	LEONARD-64N64W	NOBLE ENERGY INC
674	322657	Cricket	NOBLE ENERGY INC
675	322766	LYMAN-64N64W	NOBLE ENERGY INC
676	322937	JOHNSON, VERN-64N64W	NOBLE ENERGY INC
677	323016	CPC-HARLESS-64N64W	NOBLE ENERGY INC
678	323036	CPC-HARLESS-64N64W	NOBLE ENERGY INC
679	323352	CLEMONS-64N64W	NOBLE ENERGY INC
680	323700	Franklin	NOBLE ENERGY INC
681	323765	OCOMA-64N64W	NOBLE ENERGY INC
682	326865	OCOMA-64N64W	NOBLE ENERGY INC
683	327111	COX PM C-64N64W	NOBLE ENERGY INC
684	327136	HARLESS PM C-64N64W	NOBLE ENERGY INC
685	327137	OSTER PM C-64N64W	NOBLE ENERGY INC
686	329193	REINICK-64N64W	NOBLE ENERGY INC
687	329362	JOHNSTON-64N64W	NOBLE ENERGY INC
688	329380	CHENOWETH-64N64W	NOBLE ENERGY INC
689	329550	FRICK PC C	NOBLE ENERGY INC
690	329612	ROHR-64N64W	NOBLE ENERGY INC
691	329629	TODD-64N64W	NOBLE ENERGY INC
692	329663	TODD-64N64W	NOBLE ENERGY INC
693	329711	STATE-64N64W	NOBLE ENERGY INC
694	329712	STATE-64N64W	NOBLE ENERGY INC
695	329755	STATE-64N64W	NOBLE ENERGY INC
696	329827	STATE C	NOBLE ENERGY INC
697	329829	API-64N64W	NOBLE ENERGY INC
698	329833	STATE-64N64W	NOBLE ENERGY INC
699	329879	STATE-64N64W	NOBLE ENERGY INC
700	329969	STATE-64N64W	NOBLE ENERGY INC
701	330119	MOORE UPRC C-64N64W	NOBLE ENERGY INC

ID	LOCATION ID	LOCATION NAME	OPERATOR
702	330141	TRAVELERS-64N64W	NOBLE ENERGY INC
703	330148	GEHRING-64N64W	NOBLE ENERGY INC
704	330169	MILLER-64N64W	NOBLE ENERGY INC
705	330242	HERBST-64N64W	NOBLE ENERGY INC
706	332337	HIGHLAND-64N64W	NOBLE ENERGY INC
707	332789	Dietrich	NOBLE ENERGY INC
708	413215	BARTON C	NOBLE ENERGY INC
709	414533	ZANE ALTER C	NOBLE ENERGY INC
710	422436	MARK ALTER C	NOBLE ENERGY INC
711	425175	LONG C	NOBLE ENERGY INC
712	425450	OSTER	NOBLE ENERGY INC
713	425722	SH C	NOBLE ENERGY INC
714	439315	Honebein	PDC ENERGY INC
715	442103	Collins	PDC ENERGY INC
716	450395	Balboa Tank Battery	NOBLE ENERGY INC
717	453057	Challenger	PDC ENERGY INC
718	459511	C22-06	NOBLE ENERGY INC
719	462711	Ryann State	NOBLE ENERGY INC
720	463352	Dietrich	NOBLE ENERGY INC
721	464187	Hagen Alter	NOBLE ENERGY INC
722	464900	NGL MAJOR FACILITY	NGL WATER SOLUTIONS DJ LLC
723	477569	HONEBEIN-64N64W	PDC ENERGY INC
724	418798	Lang	NOBLE ENERGY INC
725	418924	Cricket C	NOBLE ENERGY INC
726	418925	Cricket	NOBLE ENERGY INC
727	419054	HERBST C	NOBLE ENERGY INC
728	422487	FRICK PC C	NOBLE ENERGY INC
729	422528	Franklin	NOBLE ENERGY INC
730	422860	STOCKLEY	NOBLE ENERGY INC
731	422919	Pluss	NOBLE ENERGY INC
732	425071	STATE C	NOBLE ENERGY INC
733	425184	LONG C	NOBLE ENERGY INC
734	439325	Honebein	PDC ENERGY INC
735	448902	England Rydgren	NOBLE ENERGY INC
736	450461	State 16-214 TB	NOBLE ENERGY INC
737	450479	Hanscome C #21-19	NOBLE ENERGY INC
738	453038	Jagged	PDC ENERGY INC
739	457842	HARLESS T4N R64W S17 L03	NOBLE ENERGY INC
740	457849	HARLESS PMC 17-02	NOBLE ENERGY INC
741	457851	OCOMA C 07-9 10 15	NOBLE ENERGY INC
742	462721	Hagen	NOBLE ENERGY INC
743	462800	Angela Ocoma	NOBLE ENERGY INC
744	468591	18-4-64 NWNW Fry PM C TB Location	NOBLE ENERGY INC

THIS MAP IS A COMPILATION OF PUBLICLY AVAILABLE DATA. THE ACCURACY AND COMPLETENESS OF SAID DATA HAD NOT BEEN VERIFIED BY LAT40, INC. EXISTING CONDITIONS MAY DIFFER FROM WHAT IS SHOWN.

DATA SOURCE: COGCC



Lat40°, Inc. 6250 W. 10th Street, Unit 2, Greeley, CO 970-515-5294

# RELATED LOCATION AND FLOWLINE MAP

HEN 4N64W8 1-22 PAD

PDC ENERGY

SECTION: 8  
TOWNSHIP: 4N  
RANGE: 64W  
6TH. P.M.  
WELD COUNTY, CO

ID	LOCATION ID	LOCATION NAME	OPERATOR
600	302191	ALTER C-64N64W	NOBLE ENERGY INC
601	302647	NGL MAJOR FACILITY	NGL WATER SOLUTIONS DJ LLC
602	305120	COX C-64N64W	NOBLE ENERGY INC
603	305484	NGL	NGL WATER SOLUTIONS DJ LLC
604	309757	ENGLAND-64N64W	NOBLE ENERGY INC
605	309875	SLEDGE C-64N64W	NOBLE ENERGY INC
606	310270	REINICK C-64N64W	NOBLE ENERGY INC
607	310271	REINICK C-64N64W	NOBLE ENERGY INC
608	310831	ROHR C-64N64W	NOBLE ENERGY INC
609	310884	MORIAH-64N64W	NOBLE ENERGY INC
610	309876	AMANDA ALTER C-64N64W	NOBLE ENERGY INC
611	310262	REINICK C-64N64W	NOBLE ENERGY INC
612	310870	ENGLAND-64N64W	NOBLE ENERGY INC
613	319186	REISTAD-64N64W	NOBLE ENERGY INC
614	319297	BARTON C (MULTI-WELL)	NOBLE ENERGY INC
615	322867	JOHNSON, VERN-64N64W	NOBLE ENERGY INC
616	323408	JOHNSON-64N64W	NOBLE ENERGY INC
617	327133	ROUKEMA PM C-64N64W	NOBLE ENERGY INC
618	327135	HARLESS PM C-64N64W	NOBLE ENERGY INC
619	329300	HAGEN-64N64W	NOBLE ENERGY INC
620	329301	HAGEN-64N64W	NOBLE ENERGY INC
621	329302	HAGEN-64N64W	NOBLE ENERGY INC
622	329316	MARK ALTER C	NOBLE ENERGY INC
623	329434	SMITH-64N64W	NOBLE ENERGY INC
624	329611	ROHR-64N64W	NOBLE ENERGY INC
625	329753	STATE-64N64W	NOBLE ENERGY INC
626	329754	STATE-64N64W	NOBLE ENERGY INC
627	329774	STATE-64N64W	NOBLE ENERGY INC
628	330096	STATE-64N64W	NOBLE ENERGY INC
629	331293	RYDGREN-64N64W	NOBLE ENERGY INC
630	331803	ALTER C-64N64W	NOBLE ENERGY INC
631	332659	SH FARMS C-64N64W	NOBLE ENERGY INC
632	319048	STATE A-64N64W	NOBLE ENERGY INC
633	319333	BENNER-64N64W	NOBLE ENERGY INC
634	319354	GEHRING-64N64W	NOBLE ENERGY INC
635	322937	JOHNSON, VERN-64N64W	NOBLE ENERGY INC
636	323016	CPC-HARLESS-64N64W	NOBLE ENERGY INC
637	323036	CPC-HARLESS-64N64W	NOBLE ENERGY INC
638	327111	COX PMC-64N64W	NOBLE ENERGY INC
639	327136	HARLESS PM C-64N64W	NOBLE ENERGY INC

ID	LOCATION ID	LOCATION NAME	OPERATOR
640	329193	REINICK-64N64W	NOBLE ENERGY INC
641	329612	ROHR-64N64W	NOBLE ENERGY INC
642	329755	STATE-64N64W	NOBLE ENERGY INC
643	329833	STATE-64N64W	NOBLE ENERGY INC
644	330148	GEHRING-64N64W	NOBLE ENERGY INC
645	413215	BARTON C	NOBLE ENERGY INC
646	414533	ZANE ALTER C	NOBLE ENERGY INC
647	422436	MARK ALTER C	NOBLE ENERGY INC
648	425301	BURMAN C	NOBLE ENERGY INC
649	452785	Harold	PDC ENERGY INC
650	453057	Challenger	PDC ENERGY INC
651	462711	Ryann State	NOBLE ENERGY INC
652	463352	Dietrich	NOBLE ENERGY INC
653	464187	Hagen Alter	NOBLE ENERGY INC
654	464188	Connell	NOBLE ENERGY INC
655	464900	NGL MAJOR FACILITY	NGL WATER SOLUTIONS DJ LLC
656	424694	OREDIGGER	NOBLE ENERGY INC
657	425070	RUFF C	NOBLE ENERGY INC
658	448902	England Rydgren	NOBLE ENERGY INC
659	450461	State 16-214 TB	NOBLE ENERGY INC
660	453038	Jagged	PDC ENERGY INC
661	457849	HARLESS PMC 17-02	NOBLE ENERGY INC
662	462721	Hagen	NOBLE ENERGY INC
663	463370	Opdyke Hinkle Levi	NOBLE ENERGY INC

THIS MAP IS A COMPILATION OF PUBLICLY AVAILABLE DATA. THE ACCURACY AND COMPLETENESS OF SAID DATA HAD NOT BEEN VERIFIED BY LAT40, INC. EXISTING CONDITIONS MAY DIFFER FROM WHAT IS SHOWN.

DATA SOURCE: COGCC

