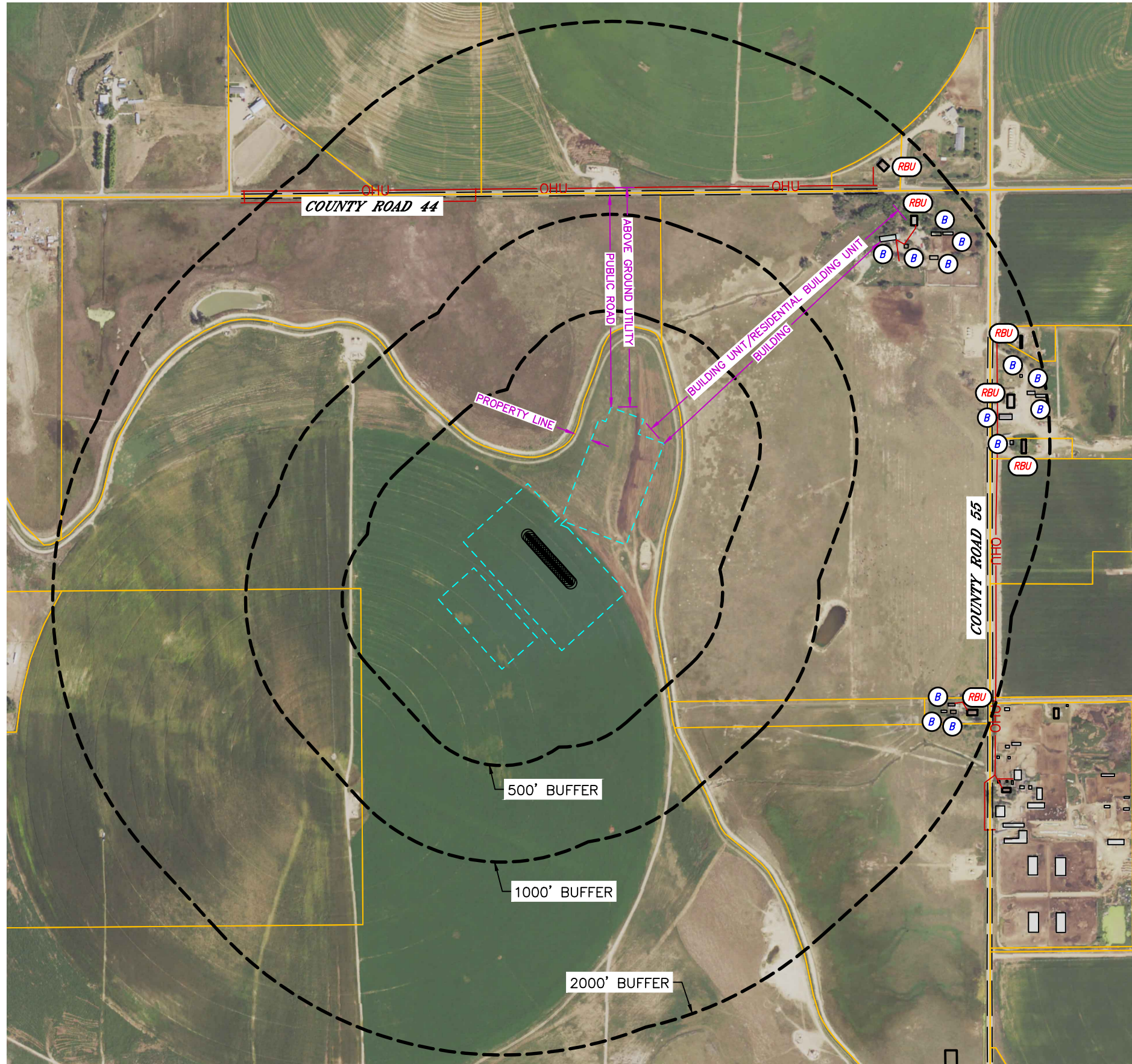




CULTURAL ITEMS MAP

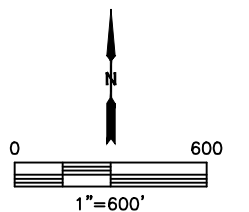
GEORGE 4N64W21 1-24 PAD
PDC ENERGY



MEASURED FROM THE NEAREST	PROPOSED WELL HEAD	EDGE OF WORKING PAD
BUILDING	±2031' SE	±1532' NE
BUILDING UNIT	±2158' SE	±1709' NE
RESIDENTIAL BUILDING UNIT	±2158' SE	±1709' NE
HIGH OCCUPANCY BUILDING UNIT	5280'+	5280'+
SCHOOL FACILITY	5280'+	5280'+
DESIGNATED OUTSIDE ACTIVITY AREA	5280'+	5280'+
DISPROPORTIONATELY IMPACTED COMMUNITY	5280'+	5280'+
BUILDING UNIT/RESIDENTIAL BUILDING UNIT/HIGH OCCUPANCY BUILDING UNIT/SCHOOL FACILITY WITHIN DISPROPORTIONATELY IMPACTED COMMUNITY BOUNDARY	5280'+	5280'+
PUBLIC ROAD (COUNTY ROAD 44)	±1760' N	±1097' N
ABOVE GROUND UTILITY	±1755' NW	±1137' N
RAILROAD	5280'+	5280'+
PROPERTY LINE	±407' N	±92' NW

WORKING PAD RADII	0-500 FEET	501-1000 FEET	1001-2000 FEET
BUILDING	0	0	19
BUILDING UNIT	0	0	6
RESIDENTIAL BUILDING UNIT	0	0	6
HIGH OCCUPANCY BUILDING UNIT	0	0	0
SCHOOL PROPERTIES	0	0	0
SCHOOL FACILITIES	0	0	0
DESIGNATED OUTDOOR ACTIVITY AREA	0	0	0

- LEGEND
- PARCEL LINE
 - WORKING PAD SURFACE
 - PROPOSED WELL
 - BUILDING
 - BUILDING UNIT
 - RESIDENTIAL BUILDING UNIT





Lat40°, Inc. 6250 W. 10th Street, Unit 2, Greeley, CO 970-515-5294

CULTURAL ITEMS MAP

GEORGE 4N64W21 1-24 PAD
PDC ENERGY

SECTION: 21
TOWNSHIP: 4N
RANGE: 64W
6TH. P.M.
WELD COUNTY, CO

MEASURED FROM THE NEAREST	GEORGE 01N	GEORGE 02N	GEORGE 03NA	GEORGE 04N	GEORGE 05N	GEORGE 06N
BUILDING	±2326' SE	±2312' SE	±2298' SE	±2285' SE	±2271' SE	±2258' SE
BUILDING UNIT	±2449' SE	±2436' SE	±2423' SE	±2409' SE	±2396' SE	±2382' SE
PUBLIC ROAD (COUNTY ROAD 44)	±1760' N	±1771' N	±1782' N	±1793' N	±1804' N	±1816' N
ABOVE GROUND UTILITY	±1755' NW	±1767' NW	±1780' NW	±1792' NW	±1805' NW	±1818' NW
RAILROAD	5280'+	5280'+	5280'+	5280'+	5280'+	5280'+
PROPERTY LINE	±407' N	±418' N	±429' N	±440' N	±451' N	±462' NW

MEASURED FROM THE NEAREST	GEORGE 07NA	GEORGE 08N	GEORGE 09N	GEORGE 10N	GEORGE 11N	GEORGE 12N
BUILDING	±2244' SE	±2231' SE	±2217' SE	±2204' SE	±2190' SE	±2177' SE
BUILDING UNIT	±2369' SE	±2356' SE	±2342' SE	±2329' SE	±2316' SE	±2303' SE
PUBLIC ROAD (COUNTY ROAD 44)	±1827' N	±1838' N	±1849' N	±1860' N	±1872' N	±1883' N
ABOVE GROUND UTILITY	±1830' NW	±1843' NW	±1856' NW	±1869' NW	±1882' NW	±1895' NW
RAILROAD	5280'+	5280'+	5280'+	5280'+	5280'+	5280'+
PROPERTY LINE	±474' NW	±485' NW	±497' NW	±509' NW	±521' NW	±534' NW

MEASURED FROM THE NEAREST	GEORGE 13N	GEORGE 14N	GEORGE 15NA	GEORGE 16N	GEORGE 17N	GEORGE 18N
BUILDING	±2164' SE	±2150' SE	±2137' SE	±2124' SE	±2110' SE	±2097' SE
BUILDING UNIT	±2289' SE	±2276' SE	±2263' SE	±2250' SE	±2237' SE	±2224' SE
PUBLIC ROAD (COUNTY ROAD 44)	±1894' N	±1905' N	±1916' N	±1928' N	±1939' N	±1950' N
ABOVE GROUND UTILITY	±1908' NW	±1921' NW	±1934' NW	±1947' NW	±1960' NW	±1973' NW
RAILROAD	5280'+	5280'+	5280'+	5280'+	5280'+	5280'+
PROPERTY LINE	±546' NW	±552' SE	±541' SE	±529' SE	±517' SE	±506' SE

MEASURED FROM THE NEAREST	GEORGE 19NA	GEORGE 20N	GEORGE 21N	GEORGE 22N	GEORGE 23N
BUILDING	±2084' SE	±2071' SE	±2057' SE	±2044' SE	±2031' SE
BUILDING UNIT	±2210' SE	±2197' SE	±2184' SE	±2171' SE	±2158' SE
PUBLIC ROAD (COUNTY ROAD 44)	±1961' N	±1973' N	±1984' N	±1995' N	±2006' N
ABOVE GROUND UTILITY	±1986' NW	±1999' NW	±2012' NW	±2025' NW	±2038' NW
RAILROAD	5280'+	5280'+	5280'+	5280'+	5280'+
PROPERTY LINE	±494' SE	±482' SE	±471' SE	±459' SE	±448' SE

