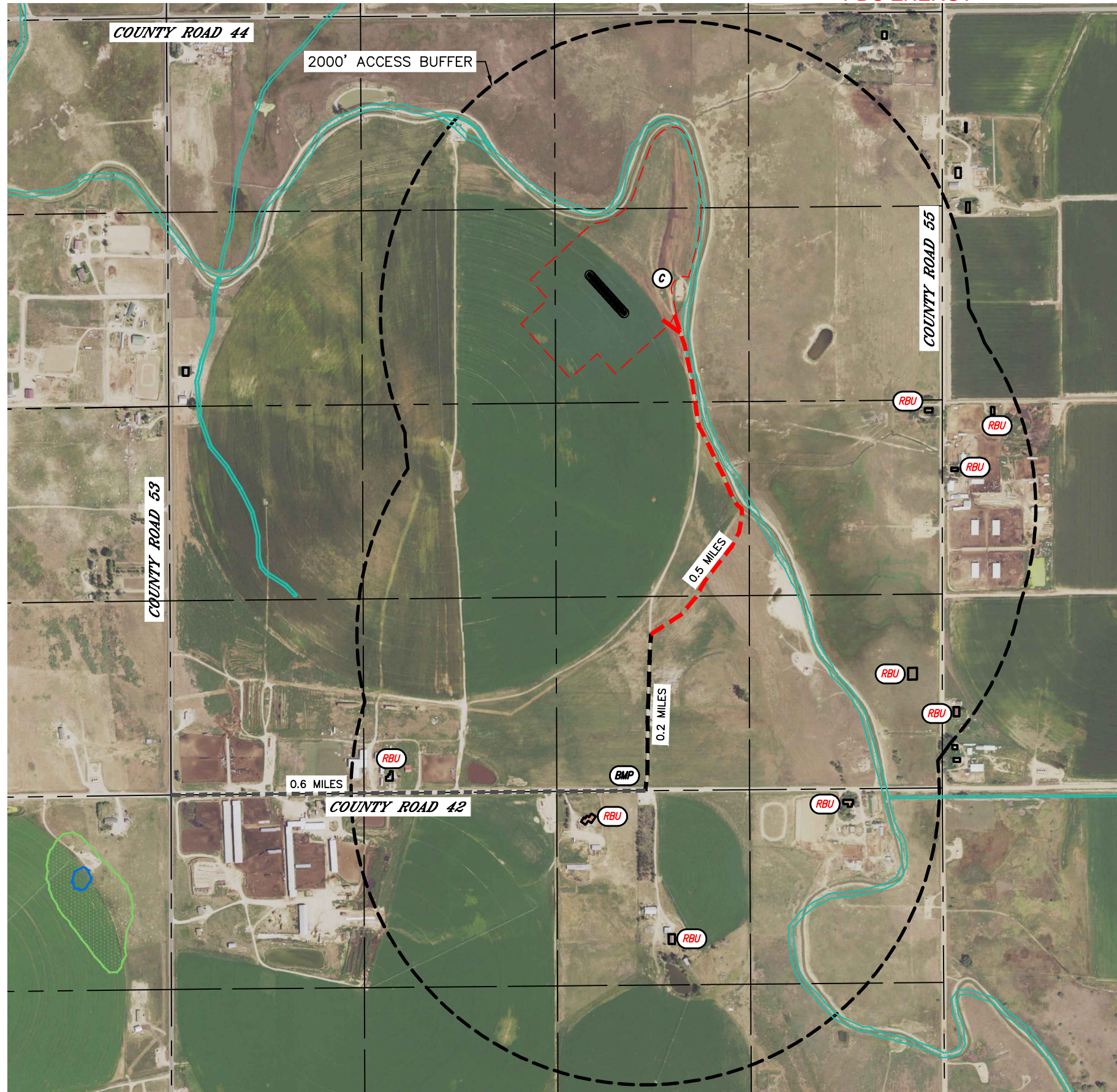


ACCESS ROAD MAP

GEORGE 4N64W21 1-24 PAD
PDC ENERGY



DRIVING DIRECTIONS TO GEORGE 4N64W21 1-24 PAD
FROM THE INTERSECTION OF COUNTY ROAD 42 AND COUNTY ROAD 53, DRIVE EAST ON COUNTY 42 FOR 0.6 MILES TO AN EXITING ACCESS TO THE NORTH, THENCE NORTH FOR 0.2 MILES TO A PROPOSED ACCESS TO THE NORTHEAST, THENCE NORTHERLY FOR 0.5 MILES ALONG PROPOSED ACCESS TO THE PROPOSED LOCATION.

WELD COUNTY PERMIT NO.: TBD
PERMIT STATUS: TO BE SUBMITTED

- LEGEND
- OIL AND GAS LOCATION
 - 2000' ACCESS BUFFER
 - PUBLIC ROAD
 - EXISTING OIL AND GAS ACCESS
 - PROPOSED OIL AND GAS ACCESS ROAD
 - PROPOSED WELL
 - BU BUILDING UNIT
 - RBU RESIDENTIAL BUILDING UNIT
 - HOBU HIGH OCCUPANCY BUILDING UNIT
 - BMP VEHICLE TRACKING BMP
 - TC TRAFFIC CONTROL FEATURE
 - CC CATTLE GUARD
 - C CULVERT
 - RIPARIAN
 - FRESHWATER POND
 - RIVERINE
 - FRESHWATER EMERGENT WETLAND
 - FRESHWATER FORESTED SHRUB WETLAND
 - RULE 411.a.(1)
 - HIGH PRIORITY HABITAT

