

## Weld County, Colorado, Southern Part

### 63—Terry fine sandy loam, 3 to 9 percent slopes

#### Map Unit Setting

*National map unit symbol:* 363f  
*Elevation:* 4,500 to 5,000 feet  
*Mean annual precipitation:* 13 to 15 inches  
*Mean annual air temperature:* 46 to 48 degrees F  
*Frost-free period:* 120 to 180 days  
*Farmland classification:* Not prime farmland

#### Map Unit Composition

*Terry and similar soils:* 85 percent  
*Minor components:* 15 percent  
*Estimates are based on observations, descriptions, and transects of the mapunit.*

#### Description of Terry

##### Setting

*Landform:* Plains  
*Down-slope shape:* Linear  
*Across-slope shape:* Linear  
*Parent material:* Residuum weathered from sandstone

##### Typical profile

*H1 - 0 to 6 inches:* fine sandy loam  
*H2 - 6 to 18 inches:* fine sandy loam  
*H3 - 18 to 37 inches:* fine sandy loam  
*H4 - 37 to 41 inches:* weathered bedrock

##### Properties and qualities

*Slope:* 3 to 9 percent  
*Depth to restrictive feature:* 20 to 40 inches to paralithic bedrock  
*Drainage class:* Well drained  
*Runoff class:* Medium  
*Capacity of the most limiting layer to transmit water (Ksat):* Moderately low to high (0.06 to 2.00 in/hr)  
*Depth to water table:* More than 80 inches  
*Frequency of flooding:* None  
*Frequency of ponding:* None  
*Calcium carbonate, maximum content:* 15 percent  
*Maximum salinity:* Nonsaline to very slightly saline (0.0 to 2.0 mmhos/cm)  
*Available water supply, 0 to 60 inches:* Low (about 4.4 inches)

##### Interpretive groups

*Land capability classification (irrigated):* 4s  
*Land capability classification (nonirrigated):* 6e  
*Hydrologic Soil Group:* B  
*Ecological site:* R067BY024CO - Sandy Plains

*Hydric soil rating:* No

**Minor Components**

**Tassel**

*Percent of map unit:* 5 percent

*Hydric soil rating:* No

**Otero**

*Percent of map unit:* 5 percent

*Hydric soil rating:* No

**Olney**

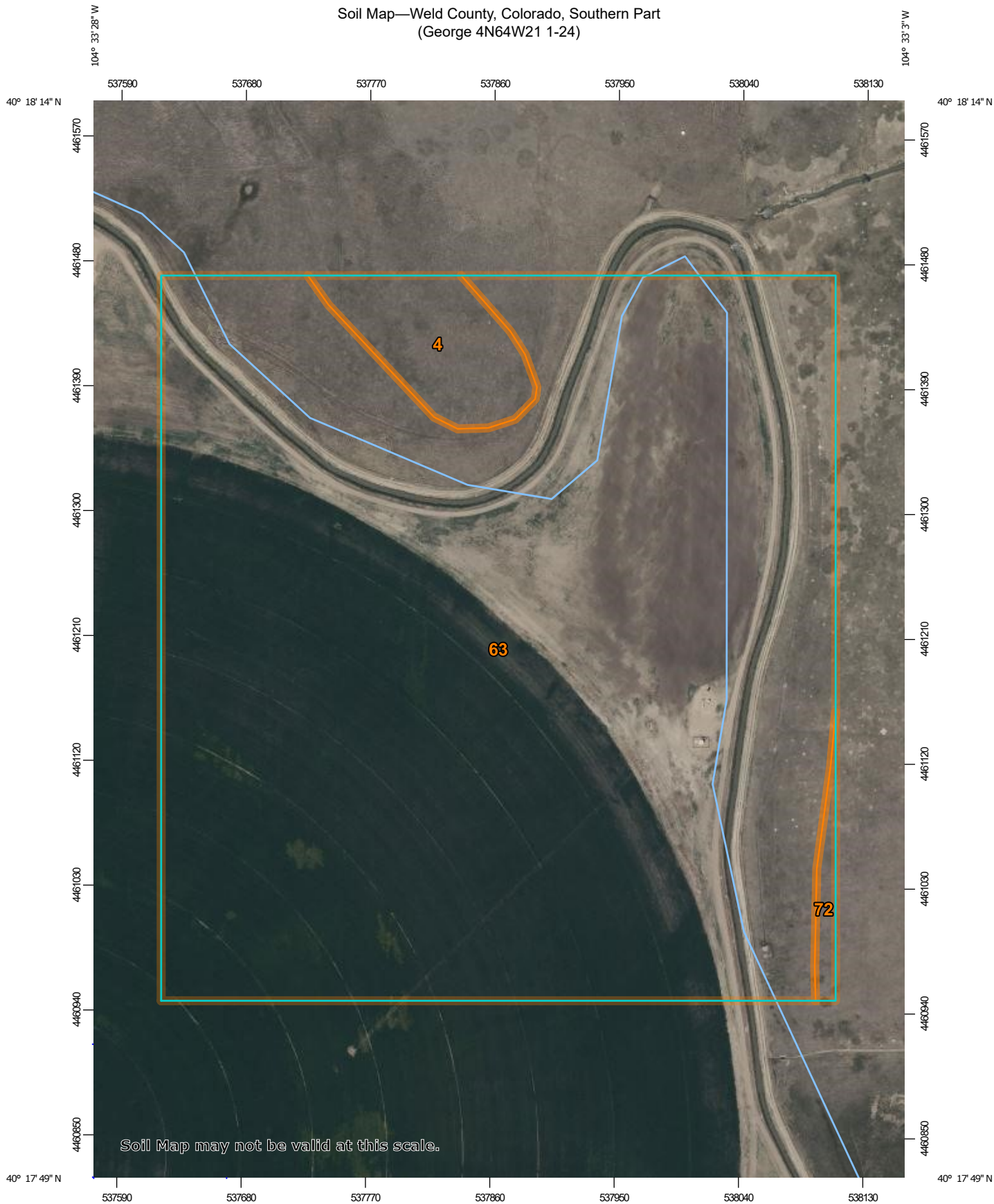
*Percent of map unit:* 5 percent

*Hydric soil rating:* No

**Data Source Information**

Soil Survey Area: Weld County, Colorado, Southern Part  
Survey Area Data: Version 19, Jun 5, 2020

Soil Map—Weld County, Colorado, Southern Part  
(George 4N64W21 1-24)



Map Scale: 1:3,780 if printed on A portrait (8.5" x 11") sheet.



Map projection: Web Mercator Corner coordinates: WGS84 Edge tics: UTM Zone 13N WGS84




Natural Resources  
Conservation Service

Web Soil Survey  
National Cooperative Soil Survey

9/21/2021  
Page 1 of 3

## MAP LEGEND

### Area of Interest (AOI)

 Area of Interest (AOI)

### Soils

 Soil Map Unit Polygons

 Soil Map Unit Lines

 Soil Map Unit Points

### Special Point Features



Blowout



Borrow Pit



Clay Spot



Closed Depression



Gravel Pit



Gravelly Spot



Landfill



Lava Flow



Marsh or swamp



Mine or Quarry



Miscellaneous Water



Perennial Water



Rock Outcrop



Saline Spot



Sandy Spot



Severely Eroded Spot



Sinkhole



Slide or Slip



Sodic Spot



Spoil Area



Stony Spot



Very Stony Spot



Wet Spot



Other



Special Line Features

### Political Features



PLSS Township and Range



PLSS Section

### Water Features



Streams and Canals

### Transportation



Rails



Interstate Highways



US Routes



Major Roads



Local Roads

### Background



Aerial Photography

## MAP INFORMATION

The soil surveys that comprise your AOI were mapped at 1:24,000.

**Warning:** Soil Map may not be valid at this scale.

Enlargement of maps beyond the scale of mapping can cause misunderstanding of the detail of mapping and accuracy of soil line placement. The maps do not show the small areas of contrasting soils that could have been shown at a more detailed scale.

Please rely on the bar scale on each map sheet for map measurements.

Source of Map: Natural Resources Conservation Service  
Web Soil Survey URL:  
Coordinate System: Web Mercator (EPSG:3857)

Maps from the Web Soil Survey are based on the Web Mercator projection, which preserves direction and shape but distorts distance and area. A projection that preserves area, such as the Albers equal-area conic projection, should be used if more accurate calculations of distance or area are required.

This product is generated from the USDA-NRCS certified data as of the version date(s) listed below.

Soil Survey Area: Weld County, Colorado, Southern Part  
Survey Area Data: Version 19, Jun 5, 2020

Soil map units are labeled (as space allows) for map scales 1:50,000 or larger.

Date(s) aerial images were photographed: Jul 19, 2018—Aug 10, 2018

The orthophoto or other base map on which the soil lines were compiled and digitized probably differs from the background imagery displayed on these maps. As a result, some minor shifting of map unit boundaries may be evident.

## Map Unit Legend

Map Unit Symbol	Map Unit Name	Acres in AOI	Percent of AOI
4	Aquolls and Aquepts, flooded	2.7	4.3%
63	Terry fine sandy loam, 3 to 9 percent slopes	60.1	94.9%
72	Vona loamy sand, 0 to 3 percent slopes	0.5	0.8%
<b>Totals for Area of Interest</b>		<b>63.3</b>	<b>100.0%</b>