

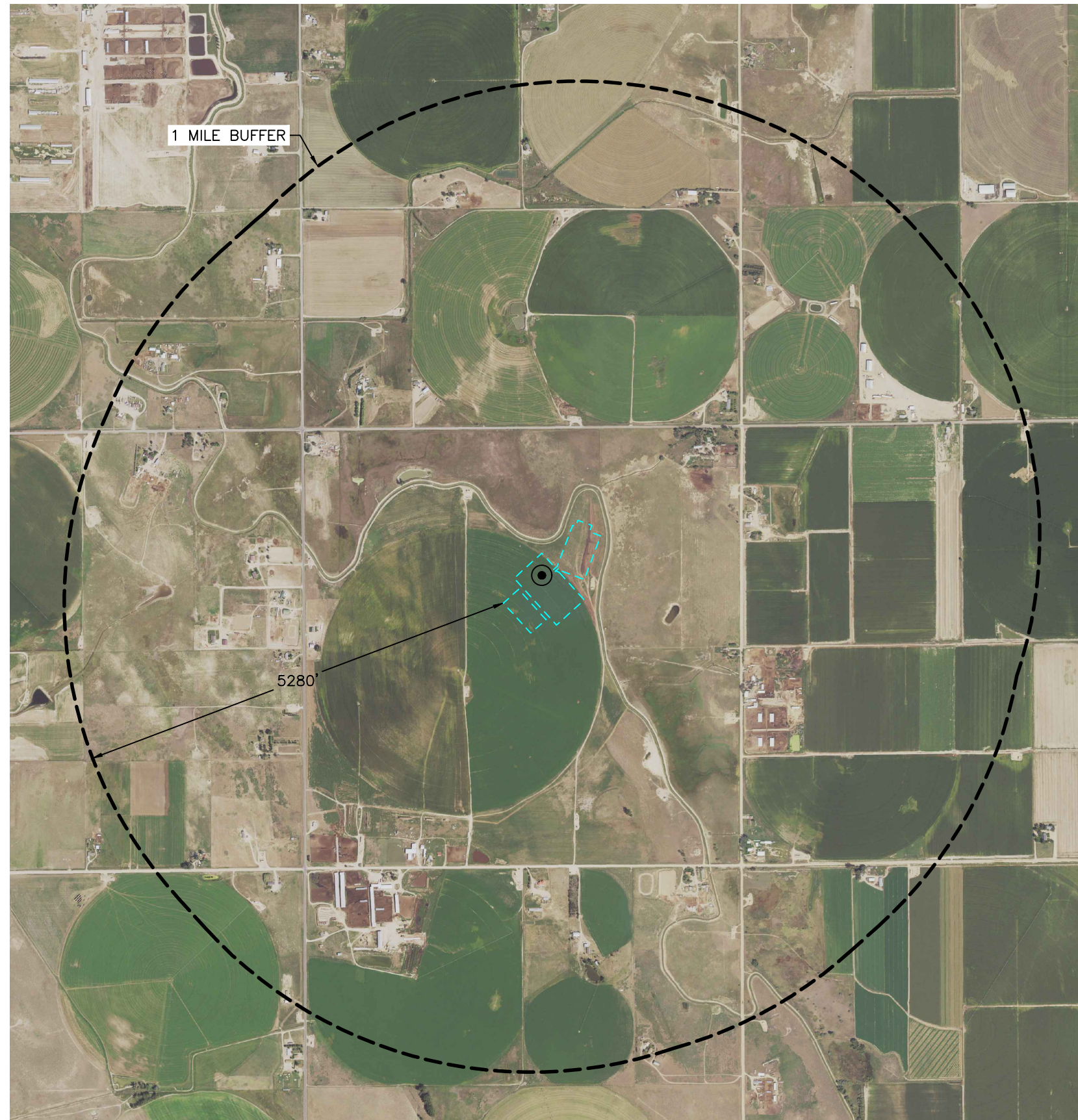


Lat40°, Inc. 6250 W. 10th Street, Unit 2, Greeley, CO 970-515-5294

GEOLOGIC HAZARD MAP

GEORGE 4N64W21 1-24 PAD
PDC ENERGY

SECTION: 21
TOWNSHIP: 4N
RANGE: 64W
6TH. P.M.
WELD COUNTY, CO



GEOLOGIC HAZARD:
(MEASURED FROM EDGE OF WORKING PAD SURFACE)

NO GEOLOGIC HAZARDS IDENTIFIED
WITHIN 1 MILE BUFFER.

LEGEND

- PROPOSED WELL LOCATION
- WORKING PAD SURFACE
- LANDSLIDE (CGS)
- FLOOD ZONE (FEMA)
- EARTHQUAKE (CGS)
- HISTORICAL COAL MINE (CGS)
- MINE (DRMS)
- RADIOACTIVITY (CGS)

NOTE:
THIS MAP IS A COMPILATION OF PUBLICLY AVAILABLE DATA. THE ACCURACY AND COMPLETENESS OF SAID DATA HAD NOT BEEN VERIFIED BY LAT40, INC. EXISTING CONDITIONS MAY DIFFER FROM WHAT IS SHOWN.

DATA SOURCE: COGCC, CGS, USGS, DRMS, WELD COUNTY ASSESSOR & FEMA

DATA DOWNLOAD DATE: 09/09/2021

DRMS

MINE: <https://maps.dnr.gis.state.co.us/drms/index.html?viewer=drms>

CGS

HISTORIC COAL MINE: <https://cologeosurvey.maps.arcgis.com/apps/webappviewer/index.html?id=1891e3149eda44af9dc8af81c4dc58a8>

EARTHQUAKES: <https://cgsarcimage.mines.edu/ON-001/>

LANDSLIDES: <https://cologeosurvey.maps.arcgis.com/apps/webappviewer/index.html?id=9dd73db7fbc34139abe51599396e2648>

RADIOACTIVITY: <https://cologeosurvey.maps.arcgis.com/apps/webappviewer/index.html?id=c5381e1335284d63bfa5d4b018b3372f>

FEMA

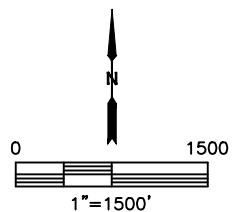
FLOOD ZONE: <https://msc.fema.gov/portal/advanceSearch#searchresultsanchor>

WELD COUNTY ASSESSOR

PROPERTY PORTAL: <https://www.co.weld.co.us/maps/propertyportal/>

COGCC

GIS ONLINE: https://cogccmap.state.co.us/cogcc_gis_online/



DATE: 9/10/2021
PROJECT#: 2019049

GEORGE 4N64W21 1-24
Geologic Hazard Map Certification

I certify that I am a Professional Geologist, having met the educational requirements and professional work experience required by C.R.S. 23-41-208(b). I have reviewed information pertaining to this Oil and Gas Location and the surrounding area, and have identified no Geologic Hazards within a one mile radius.

A handwritten signature in black ink, appearing to read "Tony Williams", is written above a solid horizontal line.

Tony Williams
Senior Development Geologist
PDC Energy Inc.