

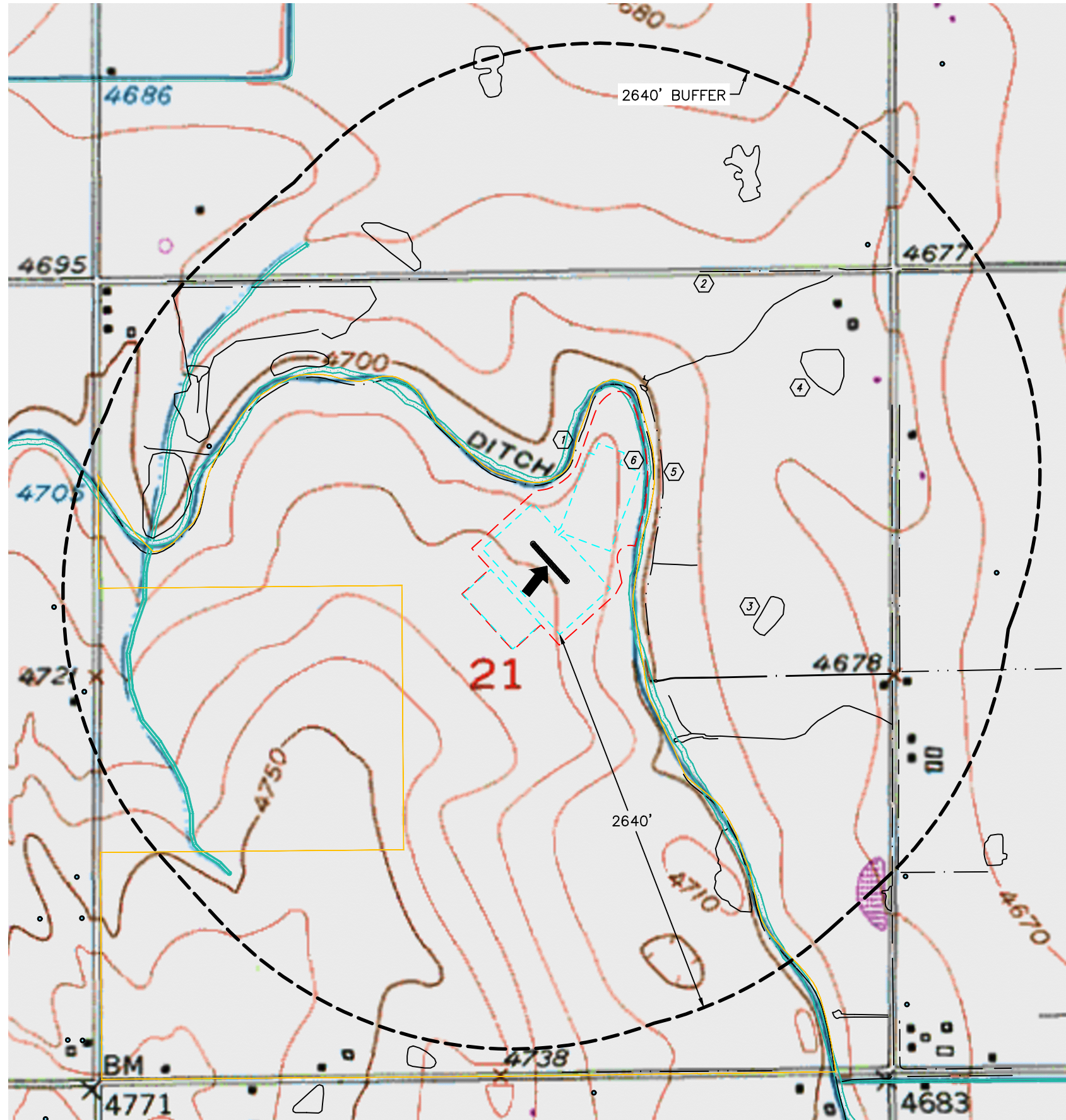


Lat40°, Inc. 6250 W. 10th Street, Unit 2, Greeley, CO 970-515-5294

HYDROLOGY MAP

GEORGE 4N64W21 1-24 PAD
PDC ENERGY

SECTION: 21
TOWNSHIP: 4N
RANGE: 64W
6TH. P.M.
WELD COUNTY, CO



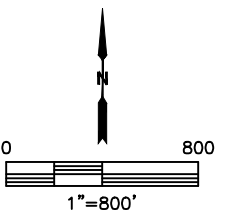
| ID | SURFACE WATER | DISTANCES/BEARING (MEASURED FROM WORKING PAD SURFACE) |
|----|--|---|
| 1 | MAJOR DITCH/CANAL | 87' NW |
| 2 | BORROW DITCH | 1296' NE, 1473' NW, 1664' E, 1712' E |
| 3 | POND | 980' SE, 1589' NW, 2156' NW, 2391' NW |
| 4 | LOW AREA | 1275' NE, 1662' NW, 2-1662' NW, 1680' SE, 1836' NE, 1905' NW |
| 5 | DITCH | 49' E, 290' SE, 628' SE, 1020' SE, 1233' SE, 1909' NE, 2086' NE |
| 6 | WETLANDS (USGS WETLANDS MAPPER) | 39' NE, 2075' NW, 2092' W |
| 7 | MISCELLANEOUS | NA |
| 8 | PUBLIC WATER SYSTEM FACILITIES | NA |
| 9 | RULE 411 BUFFER | NA |
| 10 | SURFACE WATERS THAT ARE 15 STREAM MILES UPSTREAM OF A PUBLIC WATER SYSTEM INTAKE | NA |

- LEGEND**
- SURFACE PROPERTY
 - WORKING PAD SURFACE
 - OIL AND GAS LOCATION
 - PROPOSED WELL
 - ID DESIGNATION
 - DOWNGRADIENT
 - RIPARIAN
 - FRESHWATER POND
 - RIVERINE
 - FRESHWATER EMERGENT WETLAND
 - FRESHWATER FORESTED SHRUB WETLAND
 - FLOOD ZONE **NONE WITHIN 2640' BUFFER
 - WATER WELL (FIELD LOCATED) **NONE FOUND WITHIN SURFACE PROPERTY
 - WATER WELL (GIS DATA)

NO SEEP OR SPRING IDENTIFIED WITHIN 1 MILE BUFFER AS MEASURED FROM WORKING PAD SURFACE.

DATA SOURCE: COGCC, CNHP, FEMA, USGS

NOTE:
VISIBLE SURFACE WATER SHOWN AND LISTED HEREON THAT ARE LYING OUTSIDE THE SURFACE PROPERTY MAY HAVE BEEN OBTAINED FROM THE AERIAL PHOTO AND OTHER PUBLICLY AVAILABLE DATA. THE ACCURACY AND COMPLETENESS OF SAID IMPROVEMENTS MAY NOT HAVE BEEN VERIFIED BY LAT40, INC. EXISTING CONDITIONS MAY DIFFER FROM WHAT IS SHOWN.



DATE: 9/16/2021
PROJECT#: 2019049