



Lat40°, Inc. 6250 W. 10th Street, Unit 2, Greeley, CO 970-515-5294

LOCATION PICTURES

GEORGE 4N64W21 1-24 PAD
PDC ENERGY

SECTION: 21
TOWNSHIP: 4N
RANGE: 64W
6TH. P.M.
WELD COUNTY, CO
DATE: 5/5/2021



VIEW 1 – NORTH



VIEW 2 – NORTHEAST



VIEW 3 – EAST



VIEW 4 – SOUTHEAST



VIEW 5 – SOUTH



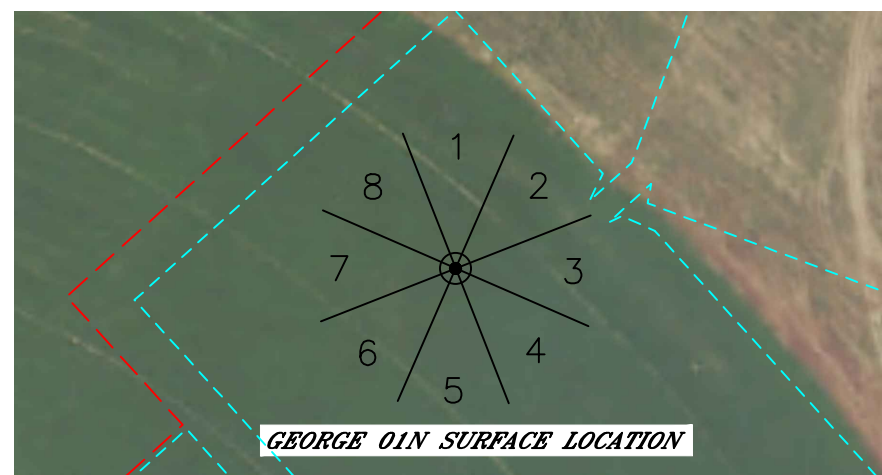
VIEW 6 – SOUTHWEST



VIEW 7 – WEST



VIEW 8 – NORTHWEST



FIELD OF VIEW DIAGRAM
N.T.S.