

King Pyles #2 Photographic Log

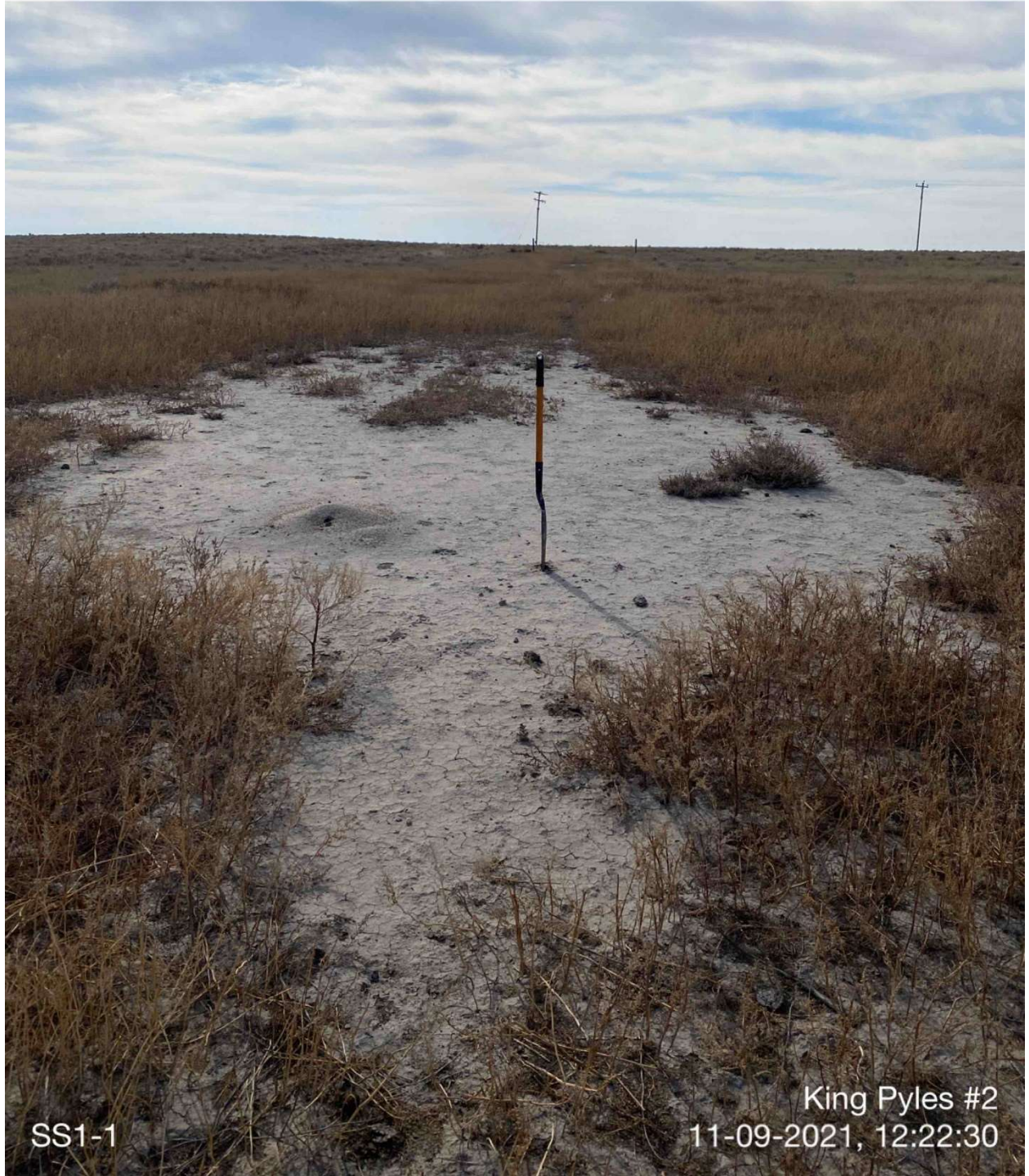




King Pyles #2 Photographic Log



☀ 218°SW (T) ● 38.414935°, -102.469200° ±16ft ▲ 3887ft





King Pyles #2 Photographic Log





King Pyles #2 Photographic Log





King Pyles #2 Photographic Log



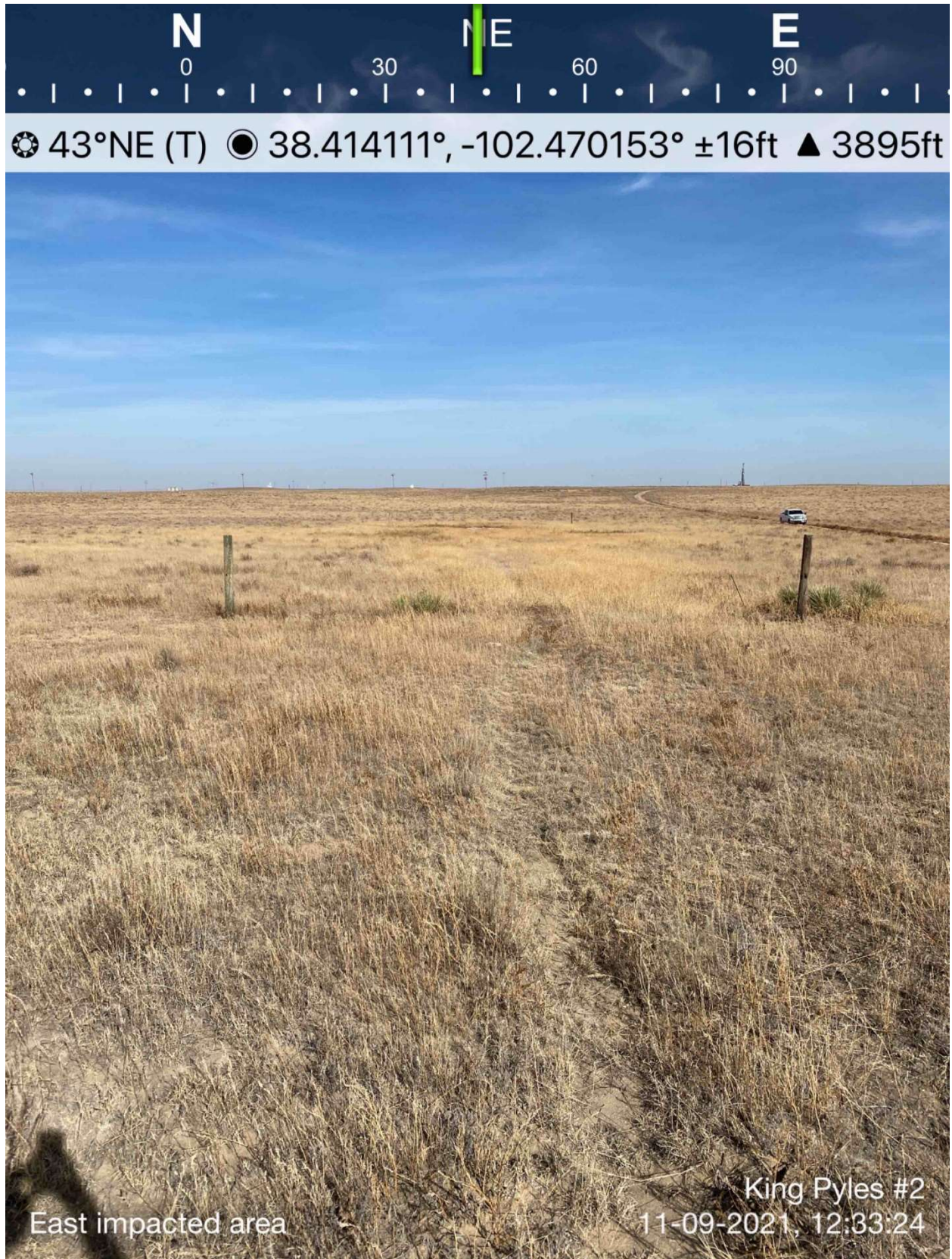


# King Pyles #2 Photographic Log





King Pyles #2 Photographic Log



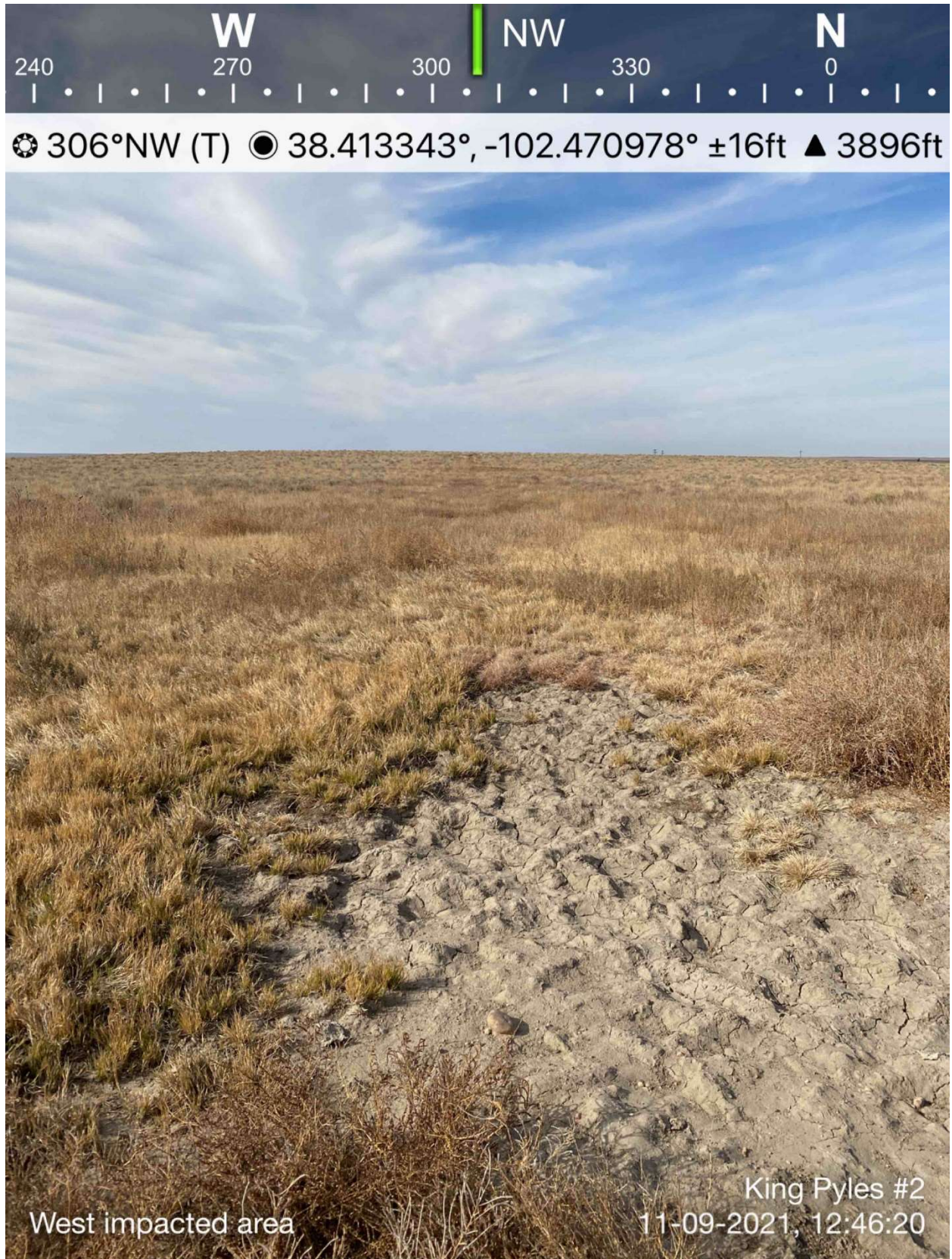
N 0 30 NE 60 E 90  
☀ 43°NE (T) ● 38.414111°, -102.470153° ±16ft ▲ 3895ft

East impacted area

King Pyles #2  
11-09-2021, 12:33:24

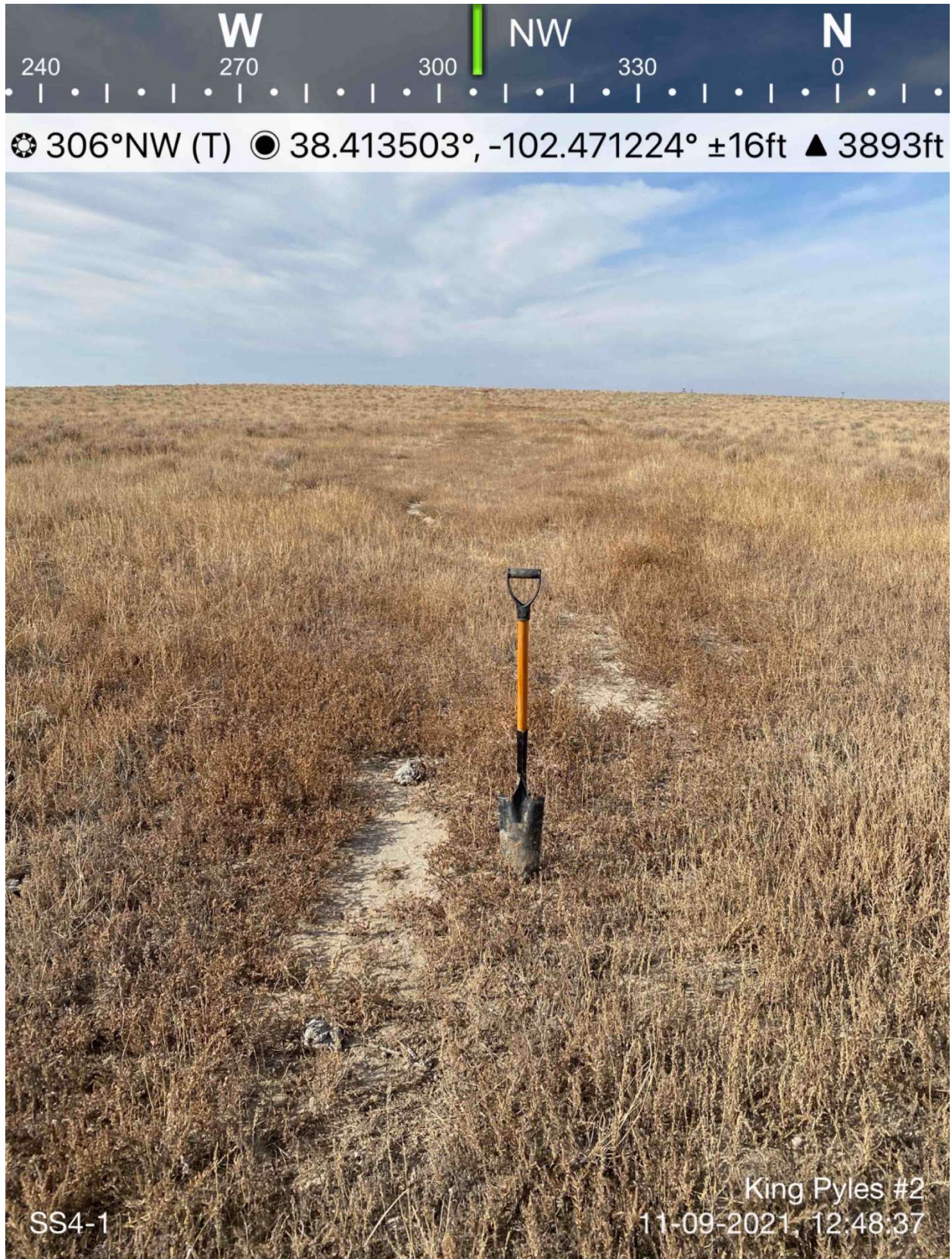


King Pyles #2 Photographic Log



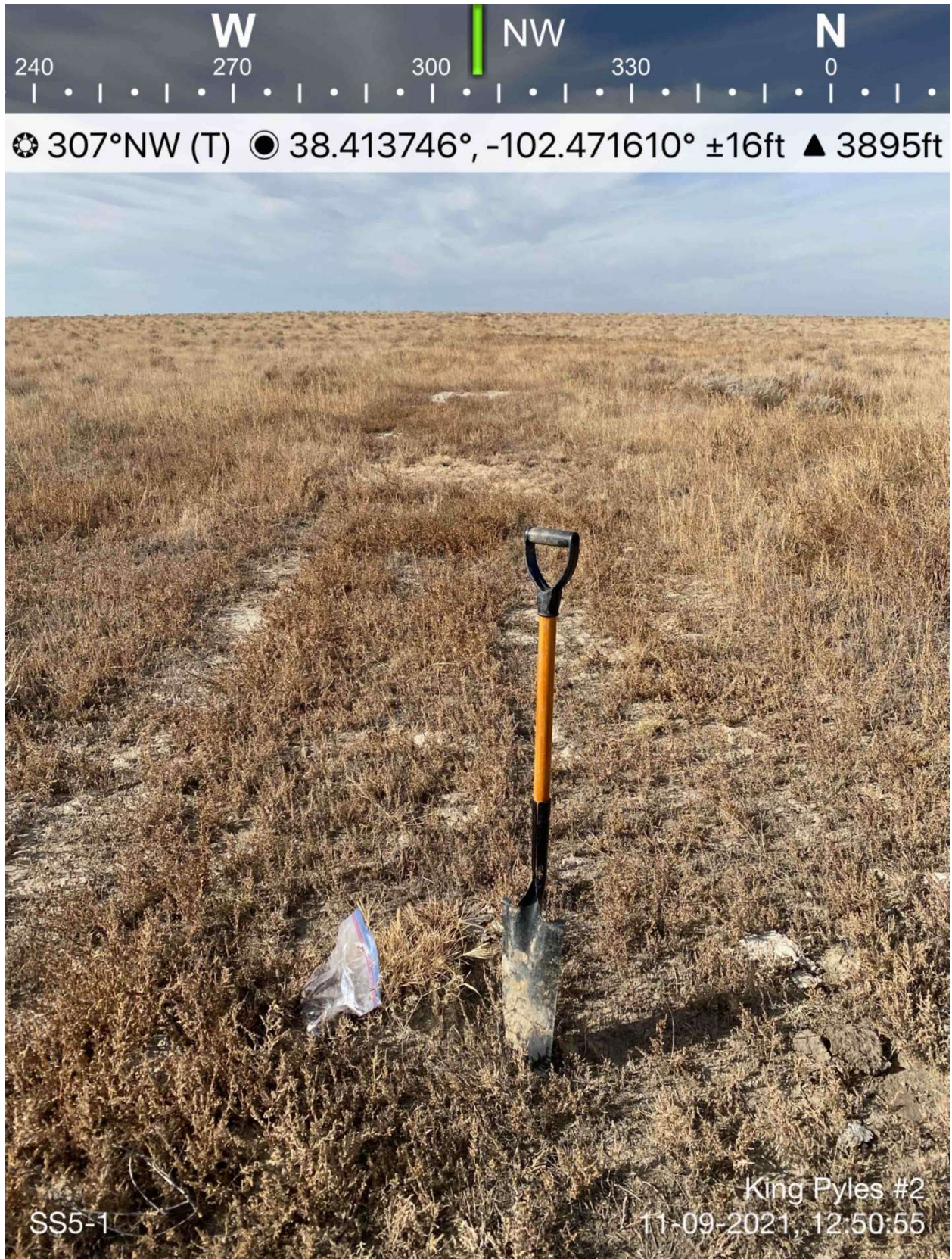


King Pyles #2 Photographic Log



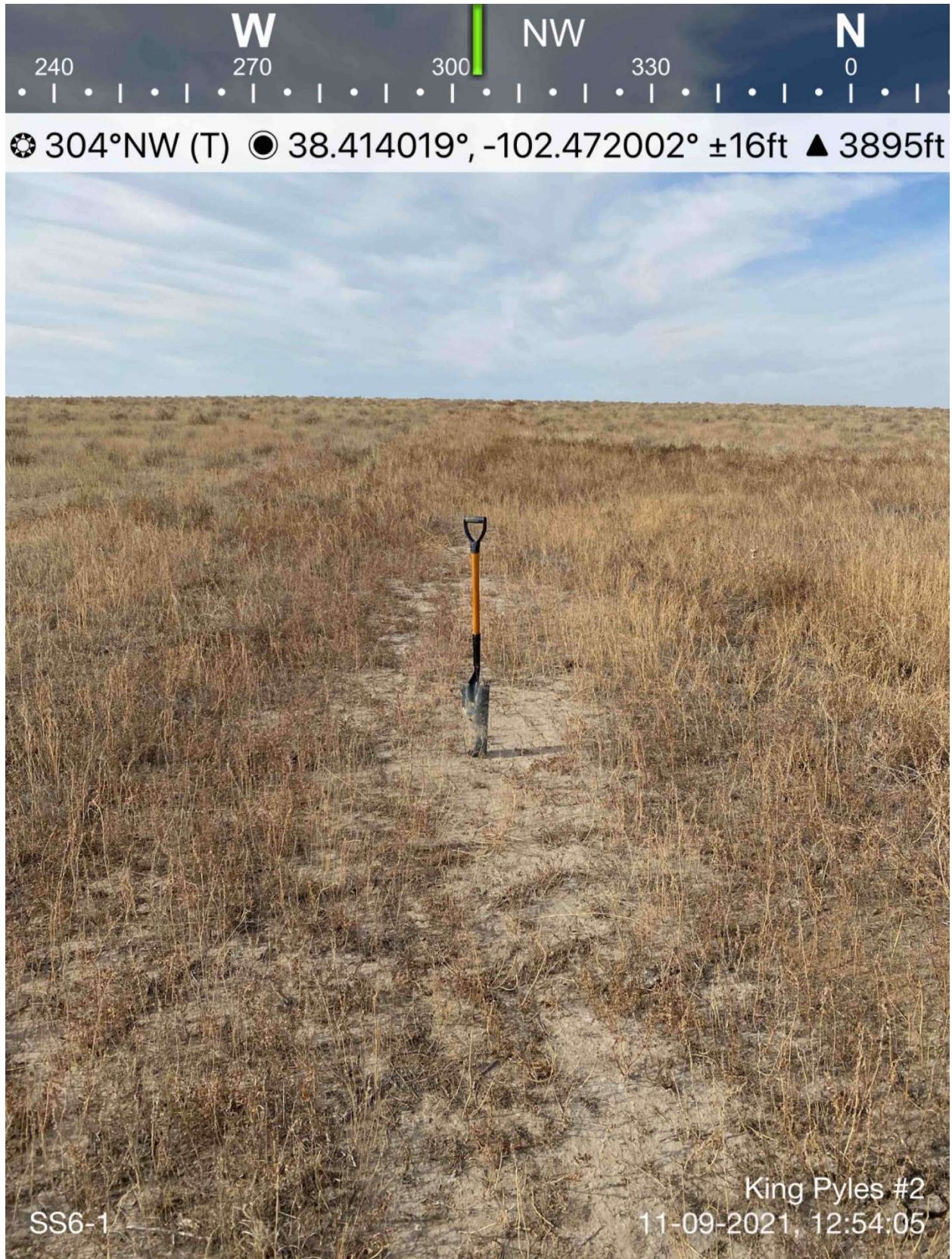


King Pyles #2 Photographic Log





King Pyles #2 Photographic Log





King Pyles #2 Photographic Log

