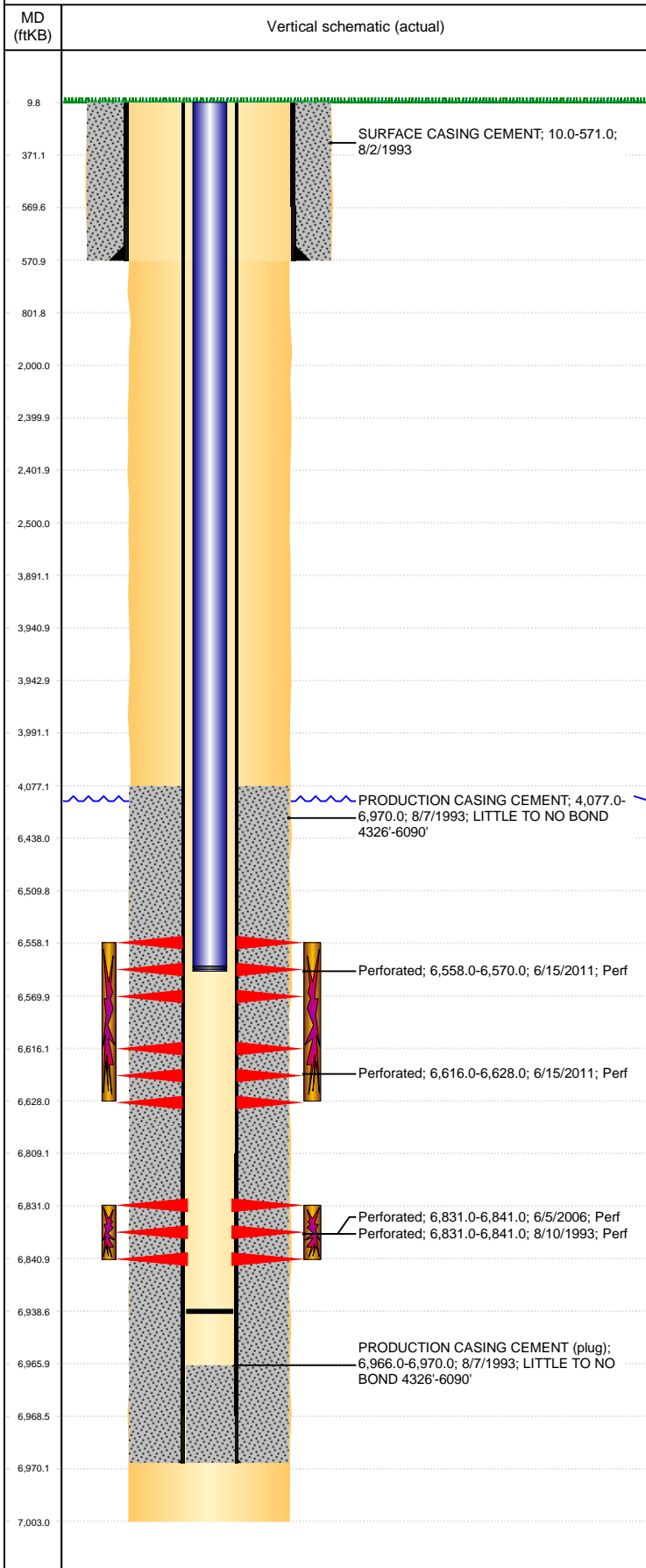


Well Name: SPIKE STATE D12-04

VERTICAL, ORIGINAL HOLE, 2/8/2022 9:53:19 AM



Well Header									
API 05-123-17226		Business Unit DJ BASIN		District 15		Well Config VERTICAL			
KB - GL / MSL (ft... 10.00		Spud Date 8/2/1993		P & A Date		Well Production Status PR			SoRT No
Comment									
Surface Location (Congressional)									
Qtr 3 NW	Qtr 4 NW	Section 12	Twnshp 3	Twnsh... N	Range 64	Rng E/... W	Actual Latitude (°) 40.24502980	Actual Longitude (°) -104.50696408	
Wellbore Sections									
Section Des			Size (in)			Act Top, MD (ftKB)		Act Btm, MD (ftKB)	
SURFACE			12 1/4			10		571	
PRODUCTION			7 7/8			571		7,003	
Casing Strings									
Csg Des		Run Date		OD (in)	Wt/Len (lb/ft)	Grade	Top, MD (ftKB)	MD (ftKB)	
Surface Casing		8/2/1993		8 5/8	24.00	K-55	10.0	571.0	
Production		8/6/1993		2 7/8	6.40	N-80	10.0	6,970.0	
Cement									
Des				Start Date		Top (ftKB)		Btm (ftKB)	
SURFACE CASING CEMENT				8/2/1993		10.0		571.0	
PRODUCTION CASING CEMENT				8/7/1993		4,077.0		6,970.0	
Zone Statuses									
Zone Name	Status Date	Status	Fluid Type	Job				Prod Method	
CODELL	7/11/2011	PR		RECOMPLETION, 6/13/2011 06:00				Flowing	
CODELL	10/26/2017	PR							
NIOBRARA	2/22/2010	PR							
NIOBRARA	7/11/2011	PR		RECOMPLETION, 6/13/2011 06:00					
Perforation Data									
Linked Zone		Bnch/Stg	Entered Shot Total	Top (ftKB)		Btm (ftKB)		Date	
NIOBRARA, ORIGINAL HOLE			48	6,558.00		6,570.00		6/15/2011	
NIOBRARA, ORIGINAL HOLE			48	6,616.00		6,628.00		6/15/2011	
CODELL, ORIGINAL HOLE			40	6,831.00		6,841.00		8/10/1993	
CODELL, ORIGINAL HOLE			40	6,831.00		6,841.00		6/5/2006	
Stimulation Intervals									
Zone			Start Date			Top (ftKB)		Btm (ftKB)	
NIOBRARA, ORIGINAL HOLE			6/29/2011			6,558.0		6,628.0	
CODELL, ORIGINAL HOLE			8/11/1993			6,831.0		6,841.0	
CODELL, ORIGINAL HOLE			7/5/2006			6,831.0		6,841.0	
Other In Hole									
Run Date	Des			Make		OD (in)	Top (ftKB)	Btm (ftKB)	
Logs									
Date	Type					Top, MD (ftKB)		Btm, MD (ftKB)	
8/6/1993	COMPENSATED DENSITY					4,150.0		6,980.0	
8/6/1993	INDUCTION					4,150.0		4,450.0	
8/10/1993	CEMENT BOND					3,950.0		6,930.0	
Plug Back Total Depths									
Date	Type		Com					Depth (ftKB)	
8/7/1993	FLOAT SHOE		FLOAT SHOE					6,966.0	
7/5/2011	FILL		TAG - 97.61' OF RAT HOLE.					6,938.6	