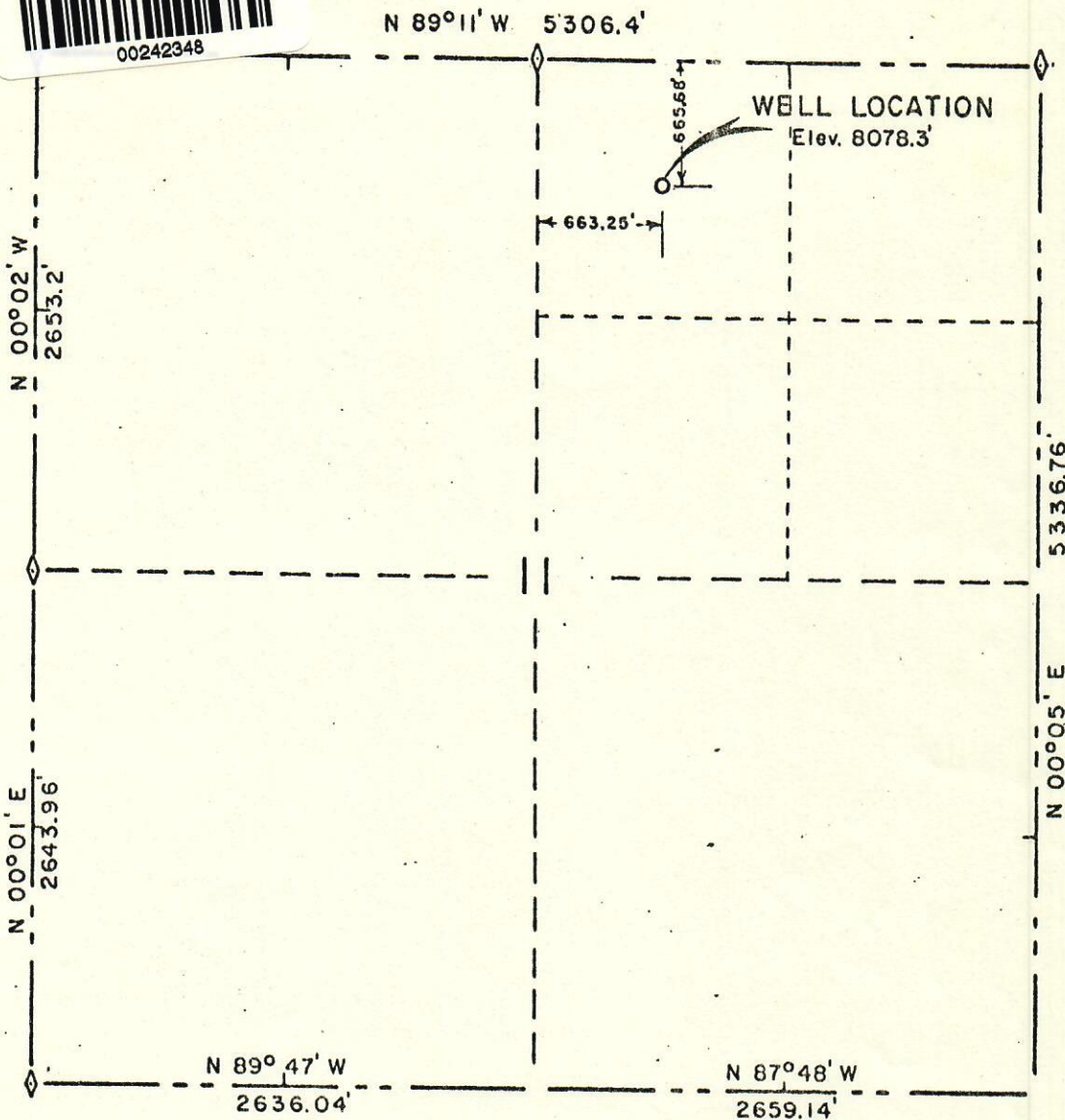
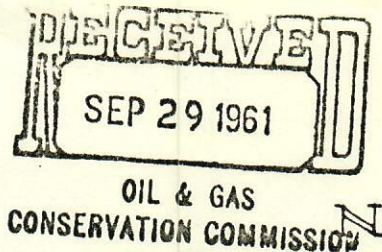


*Gas  
Prospect  
North Park*

WELL LOCATION  
CTR NW¼ NE¼ SECTION II  
T9N R78W 6TH PM.



SCALE 1"=1000'

- R.P. 200 Ft. North - Elev. 8079.8'
- R.P. 200 Ft. South - Elev. 8075.1'
- R.P. 200 Ft. East - Elev. 8082.9'
- R.P. 200 Ft. West - Elev. 8072.6'

Note: Elevation referred to U S G S datum.

I, Richard J. Mandeville do hereby certify that  
this plat was plotted from notes of a field survey  
made under my supervision on May 16, 1961.

*Richard J. Mandeville*  
Registered Engineer & Land Surveyor

WESTERN ENGINEERS	
WELL LOCATION	
TEXACO INC.	
STATE-C NO. 1	
CANADIAN RIVER FIELD	
JACKSON COUNTY, COLORADO	
SURVEYED	<i>G. J. B.</i>
DRAWN	<i>E. B. F.</i>
Grand Junction, Colo 5/17/61	