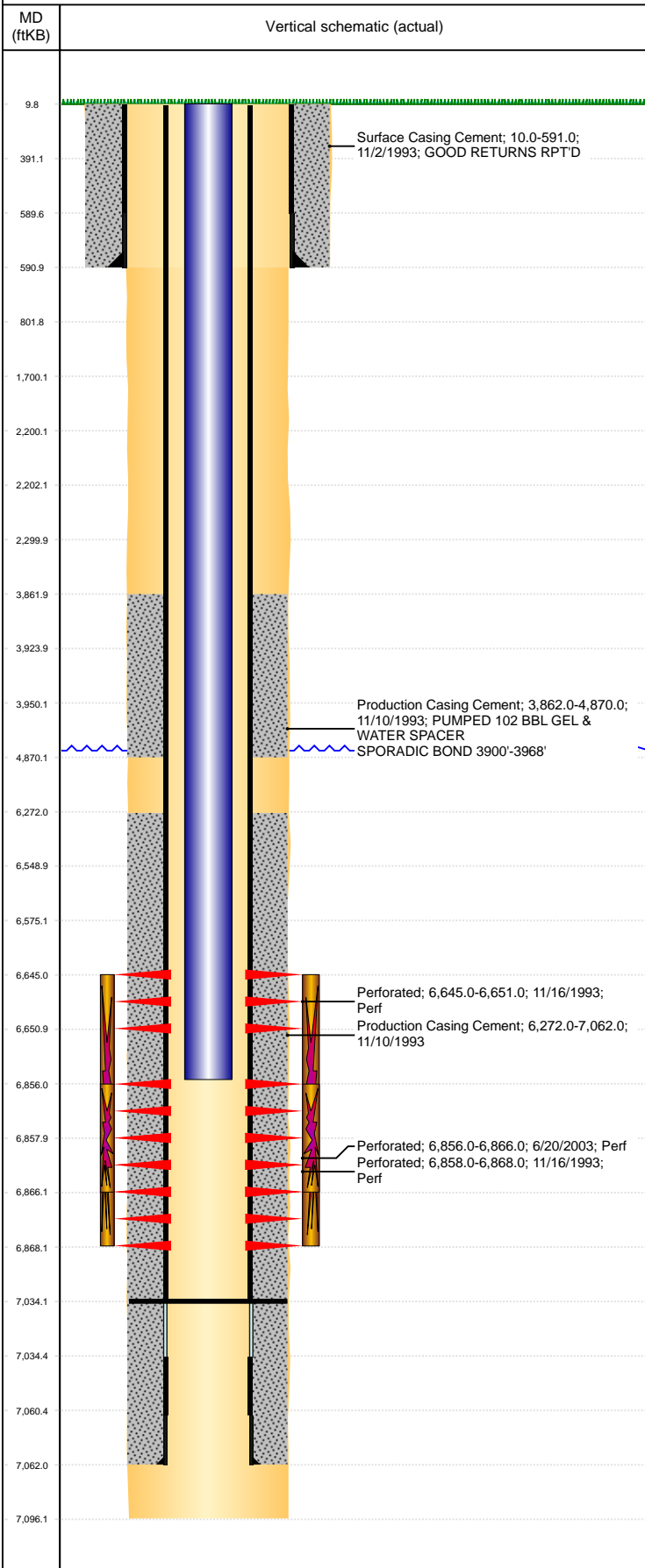


Well Name: DUNCAN D 11-6

VERTICAL, ORIGINAL HOLE, 2/7/2022 11:13:11 AM



Well Header									
API 05-123-17545		Business Unit DJ BASIN			District 15		Well Config VERTICAL		
KB - GL / MSL (ft... 10.00		Spud Date 11/1/1993		P & A Date		Well Production Status SI			SoRT No
Comment									
Surface Location (Congressional)									
Qtr 3 SE	Qtr 4 NW	Section 11	Twnshp 3	Twنش... N	Range 64	Rng E/... W	Actual Latitude (°) 40.24191590	Actual Longitude (°) -104.52086140	
Wellbore Sections									
Section Des			Size (in)			Act Top, MD (ftKB)		Act Btm, MD (ftKB)	
SURFACE			12 1/4			10		591	
PRODUCTION			7 7/8			591		7,096	
Casing Strings									
Csg Des			Run Date		OD (in)	Wt/Len (lb/ft)	Grade	Top, MD (ftKB)	MD (ftKB)
Surface			11/2/1993		8 5/8	24.00		10.0	591.0
Production			11/9/1993		4 1/2	11.60	N-80	10.0	7,062.0
Cement									
Des					Start Date		Top (ftKB)		Btm (ftKB)
Surface Casing Cement					11/2/1993		10.0		591.0
Production Casing Cement					11/10/1993		3,862.0		4,870.0
Production Casing Cement					11/10/1993		6,272.0		7,062.0
Zone Statuses									
Zone Name	Status Date	Status	Fluid Type	Job				Prod Method	
NIOBRARA	12/20/1993	PR		DRILLING/COMPLETION - ORIGINAL, 11/1/1993...				Flowing	
NIOBRARA	2/14/2014	PR		RE-FRAC, 6/19/2003 00:00					
CODELL	7/15/2003	PR							
CODELL	10/7/2016	PR							
Perforation Data									
Linked Zone		Bnch/Stg	Entered Shot Total	Top (ftKB)		Btm (ftKB)		Date	
NIOBRARA, ORIGINAL HOLE		B	6	6,645.00		6,651.00		11/16/1993	
CODELL, ORIGINAL HOLE			30	6,856.00		6,866.00		6/20/2003	
CODELL, ORIGINAL HOLE			10	6,858.00		6,868.00		11/16/1993	
Stimulation Intervals									
Zone				Start Date		Top (ftKB)		Btm (ftKB)	
NIOBRARA-CODELL, ORIGINAL HOLE				11/17/1993		6,645.0		6,868.0	
CODELL, ORIGINAL HOLE				6/25/2003		6,856.0		6,866.0	
Other In Hole									
Run Date	Des				Make		OD (in)	Top (ftKB)	Btm (ftKB)
Logs									
Date		Type				Top, MD (ftKB)		Btm, MD (ftKB)	
11/9/1993		COMPENSATED DENSITY				4,097.0		7,062.0	
11/9/1993		INDUCTION				585.0		7,090.0	
11/16/1993		CEMENT BOND				3,750.0		7,014.0	
8/10/2020		GYRO				100.0		6,800.0	
Plug Back Total Depths									
Date		Type		Com				Depth (ftKB)	
12/17/1997		FILL		CLEAN OUT				7,040.0	
7/10/2003		FILL		CLEAN OUT				7,034.0	