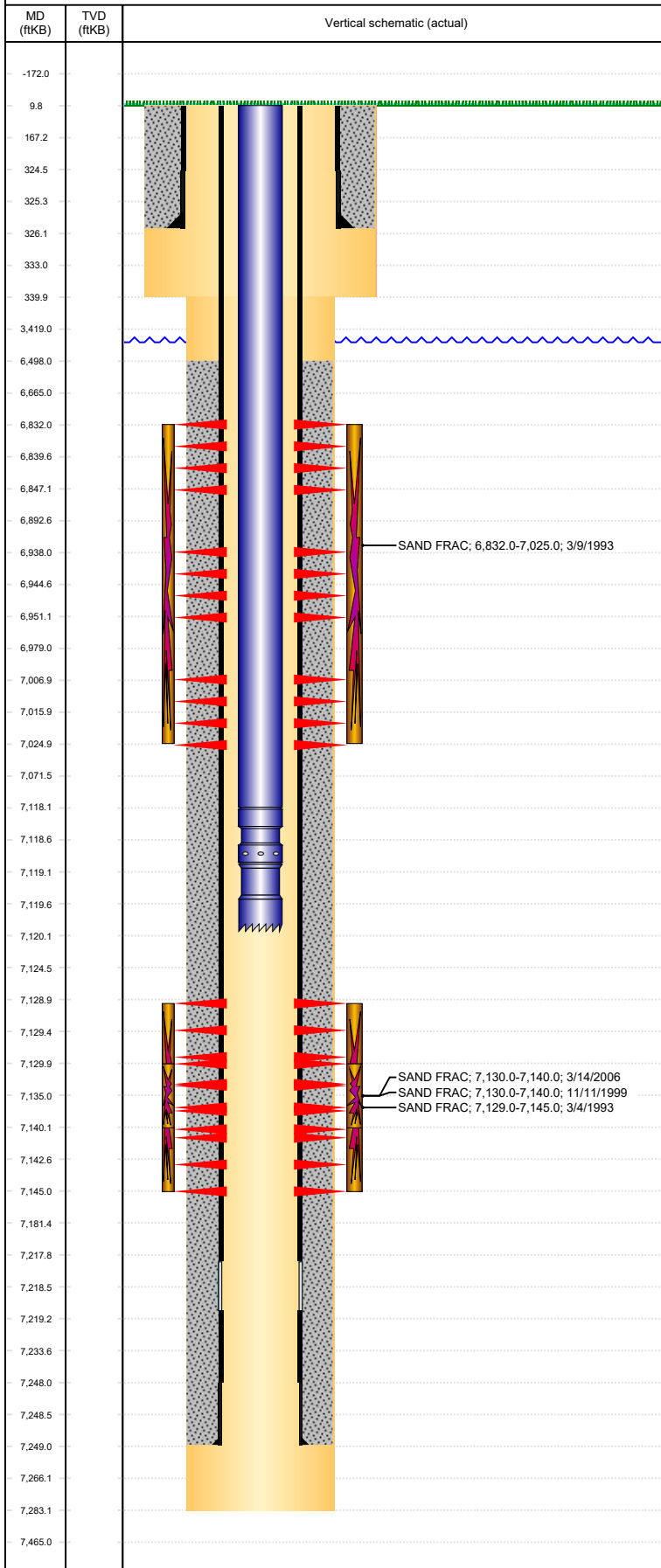


Well Name: GATES 6-17

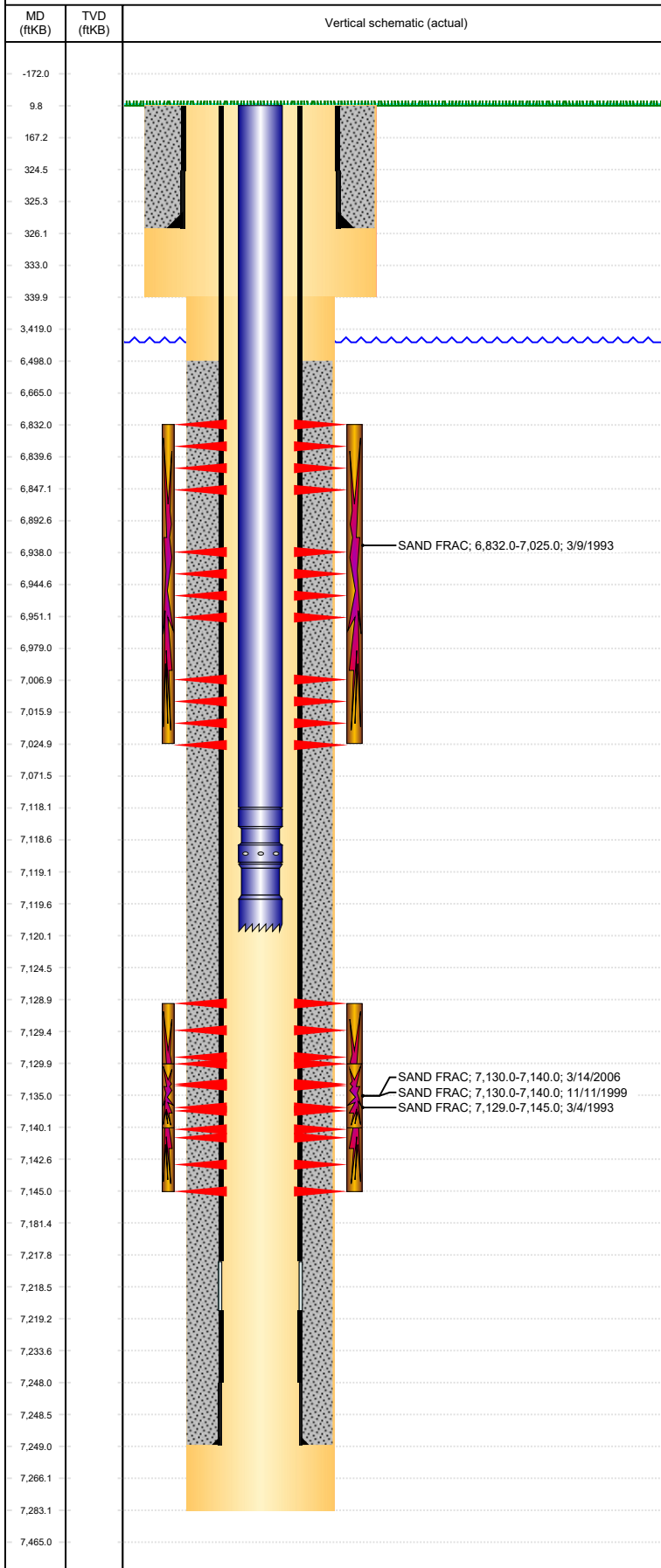
VERTICAL, ORIGINAL HOLE, 2/7/2022 10:10:34 AM



Well Header							
API 05-123-16767	Business Unit DJ BASIN		District 15		Well Config VERTICAL		
Original KB Elevation (ft) 4,726	KB - GL / MSL (ftKB) 10.00		Spud Date 2/14/1993		P & A Date		
Comment							
Directions To Well							
Congressional Location							
Quarter 3 SE	Quarter 4 NW	Section 17	Township 4	Twnshp N/S Dir N	Range 65	Range E/W Dir W	
Bottom Hole Legal Location							
Bottom Hole Legal Location							
Plug Back Total Depths							
Date	Depth (ftKB)	Method			Com		
2/19/1993	7,225.0	CASING TALLY			3/9/06 CIRCULATED NO DEPTH GIVEN		
3/9/2006		TAG					
Wellbore Sections							
Section Des		Size (in)		Act Top, MD (ftKB)		Act Btm, MD (ftKB)	
SURFACE		12 1/4		10		340	
PRODUCTION		7 7/8		340		7,283	
Zone Statuses							
Zone Name	Status Date	Status	Fluid Type	Job	Prod Method		
NIOBRARA	3/22/1993	PR		DRILLING/CO...	Flowing		
NIOBRARA	2/22/2014	PR		DRILLING/CO... RE-FRAC, 11/7... TRI-FRAC, 3/1...	Flowing		
CODELL	3/22/1993	PR			Flowing		
CODELL	11/18/1999	PR			Flowing		
CODELL	3/20/2006	PR			Flowing		
CODELL	2/22/2014	PR	Flowing				
CODELL	1/19/2015	PR	Flowing				
Casing Strings							
Surface, 326.0ftKB							
Casing Description Surface	Run Date 2/14/1993	OD (in) 8 5/8	Wt/Len (l... 24.00	Grade	Top, MD (ft... 10.0	MD (ftKB) 326.0	
Production, 7,249.0ftKB							
Casing Description Production	Run Date 2/19/1993	OD (in) 4 1/2	Wt/Len (l... 11.60	Grade I-70	Top, MD (ft... 10.0	MD (ftKB) 7,249.0	
Cement							
Description SURFACE CASING CEMENT				Top Depth (ftKB) 10.0		Bottom Depth (ftKB) 326.0	
Description PRODUCTION CASING CEMENT				Top Depth (ftKB) 6,498.0		Bottom Depth (ftKB) 7,249.0	
Tubing Strings							
Tubing Description PRODUCTION TUBING	Run Date 3/17/2006	String... 2 3/8	ID (in) 2.00	Wt (lb/ft) 4.70	Grade J-55	Len (ft) 7,110.00	Set De...
Tubing Components							
Item Des	OD (in)	Wt (lb/ft)	Grade	Jts	Len (ft)	Btm (ftKB)	Btm (TVD) (ftKB)
Tubing	2 3/8	4.70	J-55	217	7,108.00	7,118.0	
Pump Seating	2 3/8	1.10		1	1.00	7,119.0	
Nipple							
Notched collar	2 3/8			1	1.00	7,120.0	
Other In Hole							
Run Date	Des		Make		OD (in)	Top (ftKB)	Btm (ftKB)
Logs							
Date	Type				Top, MD (ftKB)	Btm, MD (ftKB)	
2/19/1993	GAMMA RAY				4,300.0	7,281.0	
2/19/1993	INDUCTION				326.0	7,281.0	
Perforation Data							
Linked Zone	Bnch/St g	Sum of Entered Shot Total	Top (ftKB)		Btm (ftKB)	Date	
NIOBRARA, ORIGINAL HOLE	A	15	6,832.00		6,847.00	3/8/1993	
NIOBRARA, ORIGINAL HOLE	B	13	6,938.00		6,951.00	3/8/1993	

Well Name: GATES 6-17

VERTICAL, ORIGINAL HOLE, 2/7/2022 10:10:34 AM



Perforation Data					
Linked Zone	Bnch/St g	Sum of Entered Shot Total	Top (ftKB)	Btm (ftKB)	Date
NIOBRARA, ORIGINAL HOLE	C	18	7,007.00	7,025.00	3/8/1993
CODELL, ORIGINAL HOLE		32	7,129.00	7,145.00	3/1/1993
CODELL, ORIGINAL HOLE		40	7,130.00	7,140.00	11/9/1999
Total		118			
Stimulation Intervals					
Interval...	Start Date	Primary Job Type		Zone	
	3/4/1993	DRILLING/COMPLETION - ORIGINAL		NIOBRARA, ORIGINAL HOLE	
Technical Result		Tech Result Details		Tech Result Note	
Comment					
TOTAL SCREEN OUT OCCURED					
Interval...	Start Date	Primary Job Type		Zone	
	3/9/1993	DRILLING/COMPLETION - ORIGINAL		NIOBRARA, ORIGINAL HOLE	
Technical Result		Tech Result Details		Tech Result Note	
Comment					
WELL FILE STATES FRAC'D DOWN TUBING & CASING					
Interval...	Start Date	Primary Job Type		Zone	
	11/11/1999	RE-FRAC		CODELL, ORIGINAL HOLE	
Technical Result		Tech Result Details		Tech Result Note	
Comment					
Interval...	Start Date	Primary Job Type		Zone	
	3/14/2006	TRI-FRAC		CODELL, ORIGINAL HOLE	
Technical Result		Tech Result Details		Tech Result Note	
Comment					
NO DATA FOR PERFS BEING SHOT?					