

RMWS

ROCKY MOUNTAIN WIRELINE SERVICE

CEMENT BOND LOG

GAMMA RAY/ CCL

Company

UNKNOWN

Well

UNDERWOOD DITCH #5

Field

County

ARCHULETA

State

COLORADO

Location:

API #: 05-007-40037-00

Other Services

SEC

4

TVMP

32N

RGE

1E

Elevation

NA

KB NA

GL

GL

KB

GL

MA

CL

MA

Permanent Datum

GL

Log Measured From

GL

Drilling Measured From

KB

Date

11-3-2021

Run Number

ONE

Depth Driller

NA

Present Depth Driller

NA

Depth Logger

155

Bottom Logged Interval

155

Top Log Interval

SURFACE

Fluid Level

SURFACE

Type Fluid

WATER

Max. Recorded Temp.

NA

Estimated Cement Top

SEE LOG

Equipment Number

219

Location

Grand Junction, Co

Recorded By

C. Burns

Witnessed By

Mr. Snow

Borehole Record

Bit

From

To

Size

7"

Weight

From

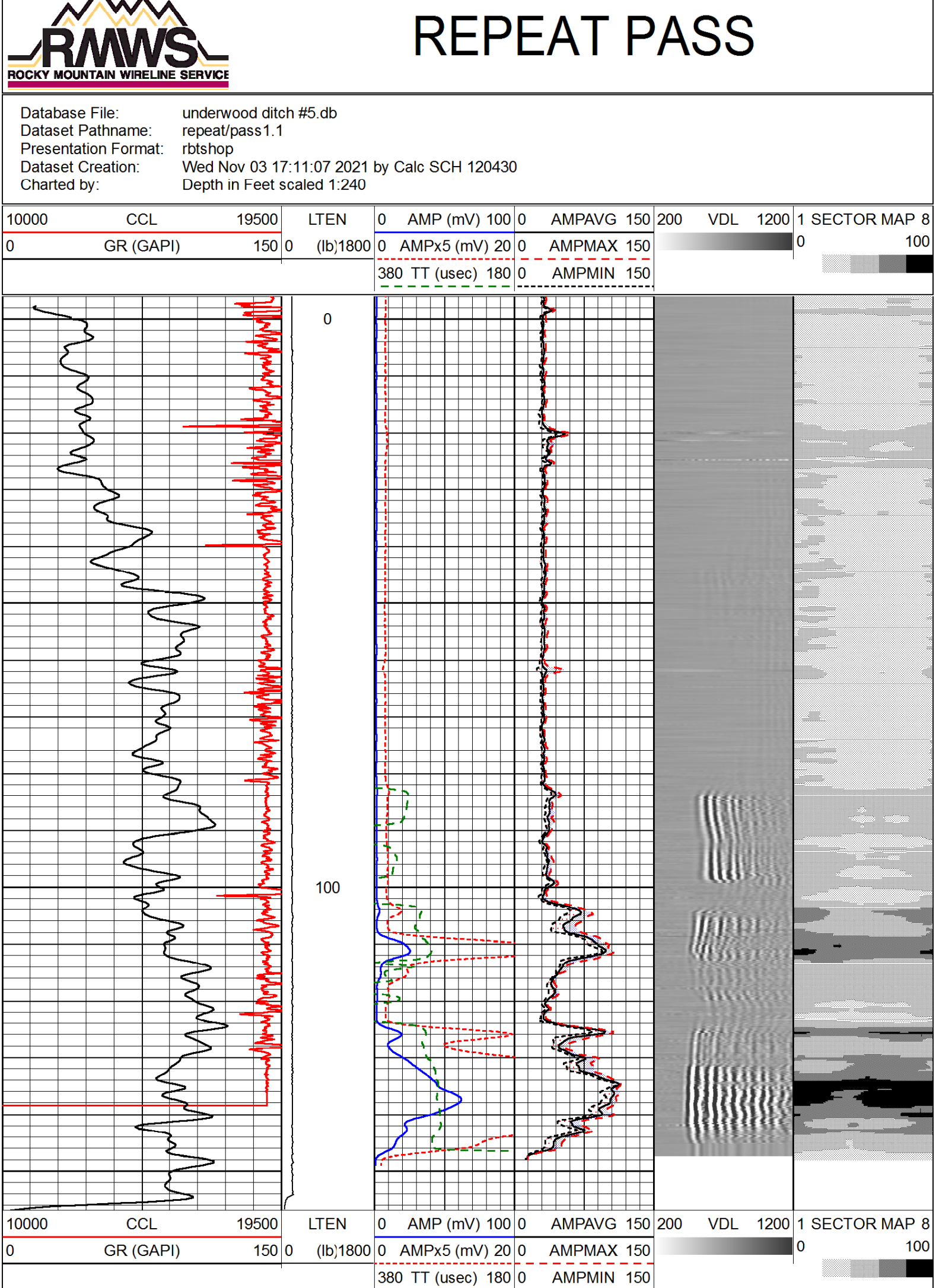
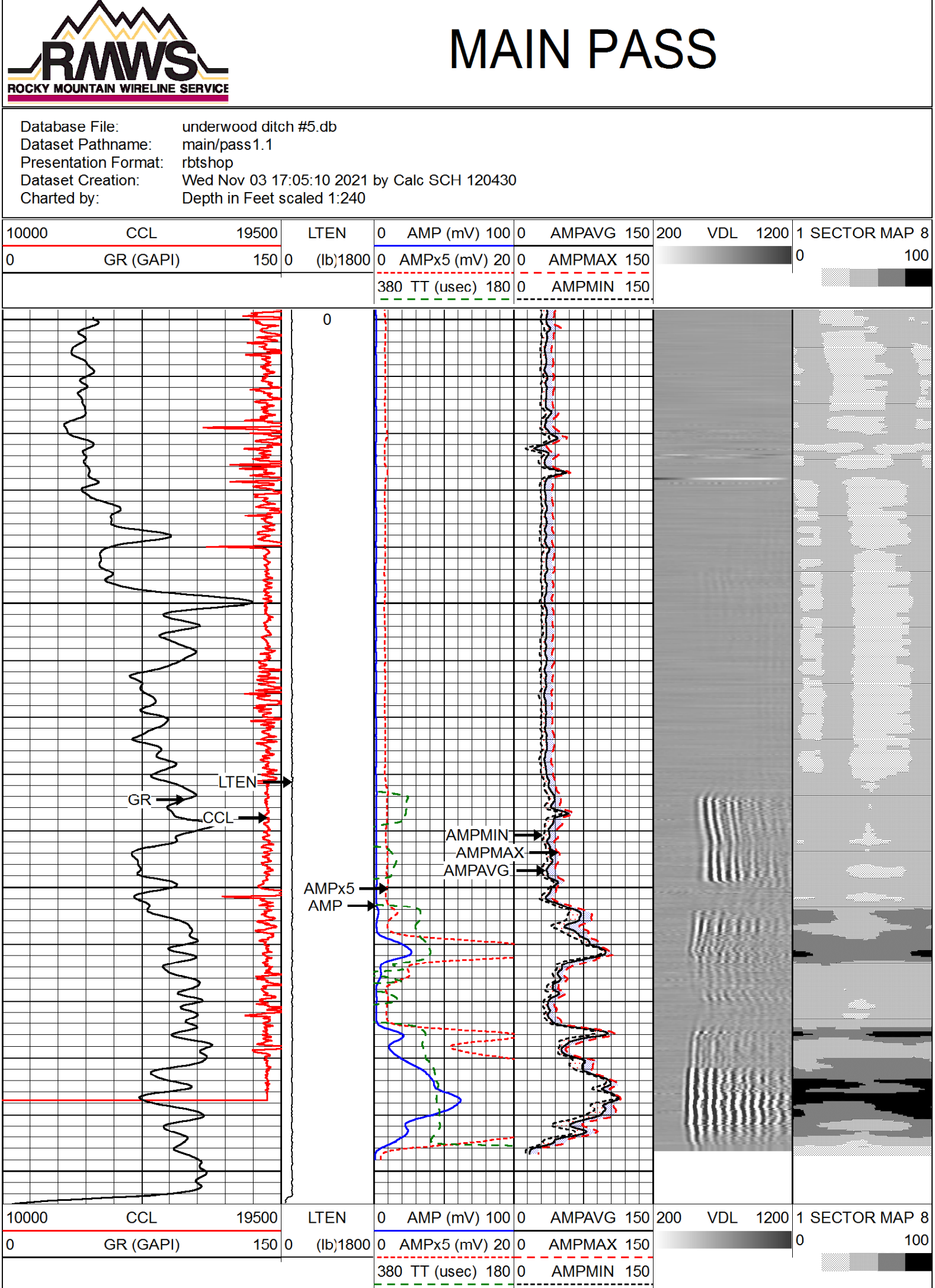
To

surface

<<< Fold Here >>>

All interpretations are opinions based on inferences from electrical or other measurements and we cannot and do not guarantee the accuracy or correctness of any interpretation, and we shall not, except in the case of gross or willful negligence on our part, be liable or responsible for any loss, costs, damages, or expenses incurred or sustained by anyone resulting from any interpretation made by any of our officers, agents or employees. These interpretations are also subject to our general terms and conditions set out in our current Price Schedule.

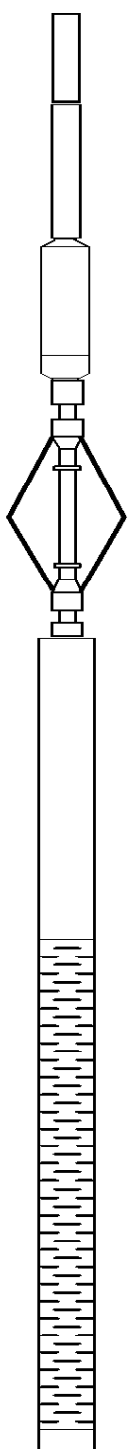


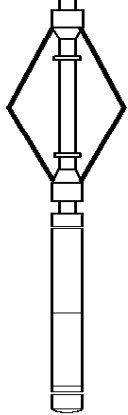
WARRIOR 7.0 SOFTWARE - Comments



Log Variables

Database: C:\Warrior\Data\underwood ditch #5.db
Dataset: field/well/main/pass1

Top - Bottom							
PPT usec 0	CASEWGHT lb/ft 11.5	MAXAMPL mV 0	MINAMPL mV 1	MINATTN db/ft 0.8	CASEOD in 7	PERFS 0	TDEPTH ft 0
BOTTEMP degF 100	BOREID in 7.875						

Sensor	Onset (ft)	Schematic	Description	Len (ft)	OD (in)	Wt (lb)
CCL	18.13		CHD-AES (000001) Cable Head	1.04	1.69	2.00
			XTU-002 (10006455) Crossover Ultrawire Toolbus To Ultralink	1.58	1.69	6.50
			CCL-028 (1036) CCL UW 3 1/8" SONDEX	1.61	3.13	36.00
			PRC-022 (215770) (6 ARM 2 3/8" ROLLER CENTRALIZER SONDEX)	3.00	2.38	21.40
WVF3FT	10.28		RBT-004 (1122) Radial Bond Tool (UW 3 1/8)	9.47	3.13	140.00
WVFS1	10.28					
WVFS2	10.28					
WVFS3	10.28					
WVFS4	10.28					
WVFS5	10.28					
WVFS6	10.28					
WVFS7	10.28					
WVFS8	10.28					
CBLTEMP	10.28					
CBLROT	10.28					
WVF5FT	9.28		PRC-022 (215771) (6 ARM 2 3/8" ROLLER CENTRALIZER SONDEX)	3.00	2.38	21.40
GR	0.72		PGR-020 (10007620) Production Gamma Ray	1.93	1.69	9.50
TSTAMP	0.00		BUL-006 (212965) Bullnose Terminator	0.22	1.69	1.20
ITEMPX	0.00					
HVOLTX	0.00					
Dataset: underwood ditch #5 db: field/well/main/pass1						

Dataset: underwood ditch #5.db: field/well/main/pass1

Total Length: 21.85 ft

Total Weight: 238.00 lb

O.D.: 3.13 in

RMWS

ROCKY MOUNTAIN WIRELINE SERVICE

Company

UNKNOWN

Well

UNDERWOOD DITCH #5

Field

County

ARCHULETA

State

COLORADO