



Form PS-102

RECEIVED

R. 53 W

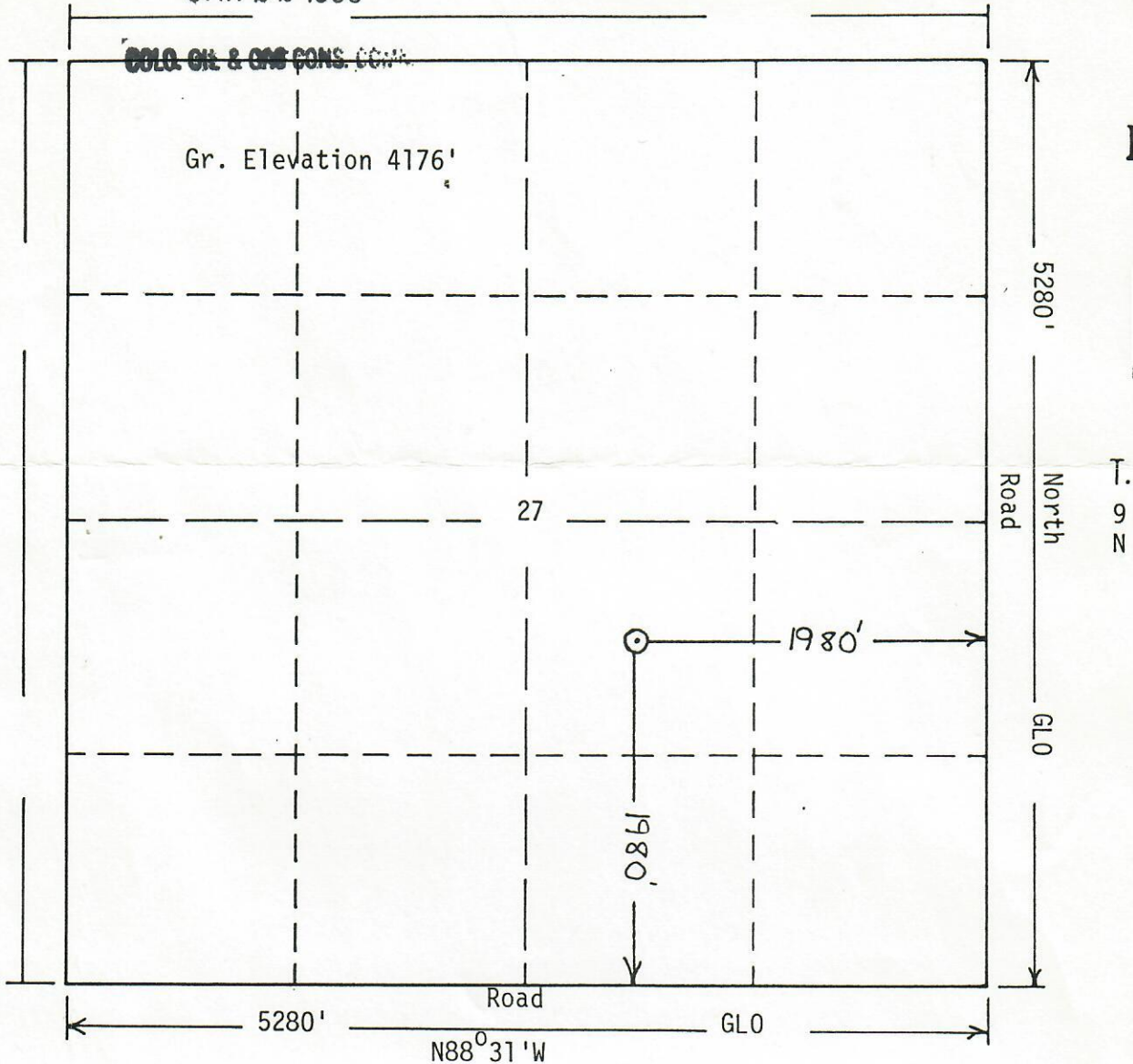


State

JAN 22 1986

COLO. OIL & GAS CONS. COM.

Gr. Elevation 4176'



Scale: 1"=1000'

Powers Elevation of Denver, Colorado has in accordance with a request from Mr. Gear for Strata Energy Resources Corp. determined the location of 27-10 Whittler to be 1980fs1, 1980fe1 Section 27, Township 9 N Range 53 W of the 6th Principal Meridian, Logan County, Colorado

I hereby certify that this plat is an accurate representation of a corner survey showing the location of 27-10 Whittler

Date: 1-22-86

Licensed Land Surveyor No. 23501
State of Colorado