

Well Name: HANSCOME C02

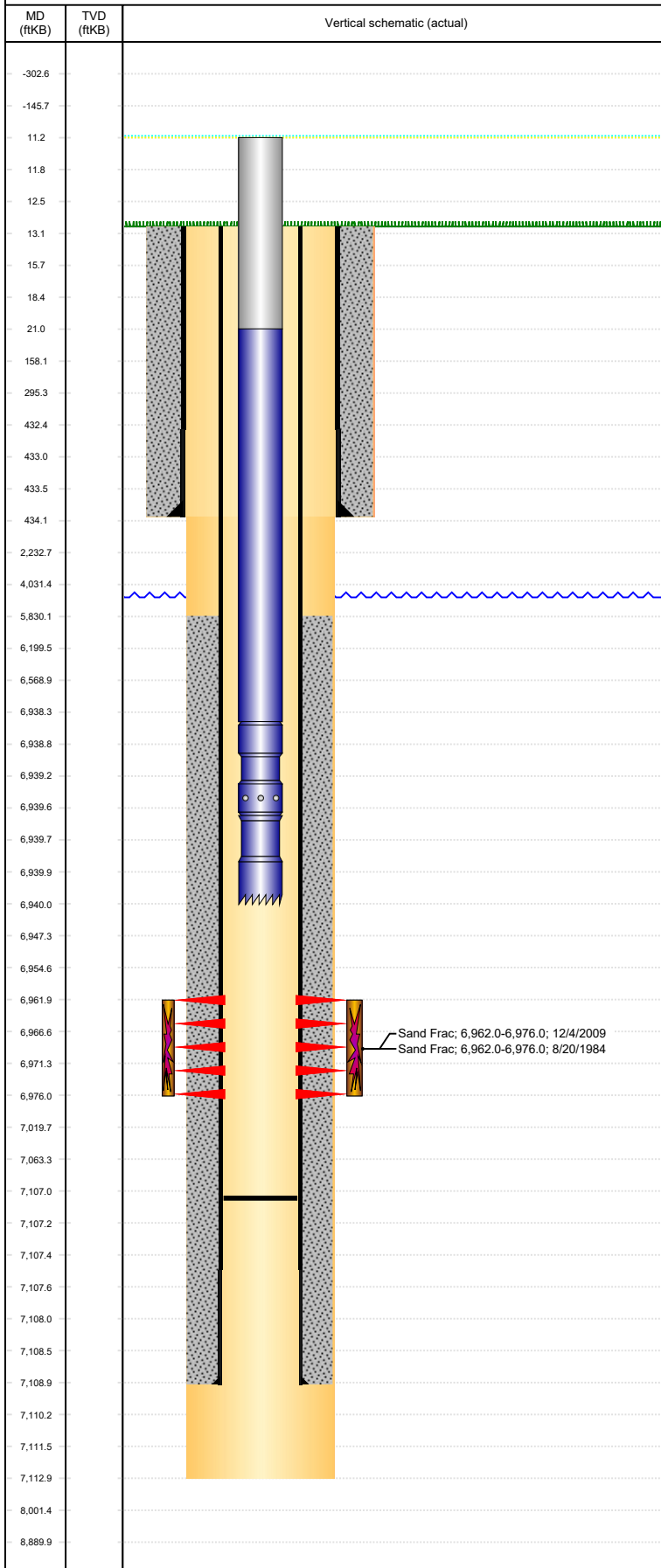
VERTICAL, ORIGINAL HOLE, 2/4/2022 9:32:28 AM

MD (ftKB)	TVD (ftKB)	Vertical schematic (actual)
-302.6		
-145.7		
11.2		
11.8		
12.5		
13.1		
15.7		
18.4		
21.0		
158.1		
295.3		
432.4		
433.0		
433.5		
434.1		
2,232.7		
4,031.4		
5,830.1		
6,199.5		
6,568.9		
6,938.3		
6,938.8		
6,939.2		
6,939.6		
6,939.7		
6,939.9		
6,940.0		
6,947.3		
6,954.6		
6,961.9		
6,966.6		
6,971.3		
6,976.0		
7,019.7		
7,063.3		
7,107.0		
7,107.2		
7,107.4		
7,107.6		
7,108.0		
7,108.5		
7,108.9		
7,110.2		
7,111.5		
7,112.9		
8,001.4		
8,889.9		

<b>Well Header</b>							
API 05-123-11925		Business Unit DJ BASIN		District 15		Well Config VERTICAL	
Original KB Elevation (ft) 4,799		KB - GL / MSL (ftKB) 13.00		Spud Date 7/29/1984		P & A Date	
Comment WELL FILE MINIMAL & SKETCHY							
Directions To Well RD 53 & 42, S 3/10, E INTO.							
<b>Congressional Location</b>							
Quarter 3 SW	Quarter 4 NW	Section 28	Township 4	Twnshp N/S Dir N	Range 64	Range E/W Dir W	
<b>Bottom Hole Legal Location</b>							
Bottom Hole Legal Location							
<b>Plug Back Total Depths</b>							
Date	Depth (ftKB)	Method			Com		
11/24/1982	9,313.0	CASING TALLY			DEPTH LOGGER ON CBL  C/O AFTER REFRAC.		
8/2/1984	7,095.0	TAG					
12/3/2008	7,039.0	TAG					
12/11/2009	7,107.0	TUBING TALLY					
<b>Wellbore Sections</b>							
Section Des		Size (in)		Act Top, MD (ftKB)		Act Btm, MD (ftKB)	
SURFACE		12 1/4		13		434	
PRODUCTION		7 7/8		434		7,113	
<b>Zone Statuses</b>							
Zone Name	Status Date	Status	Fluid Type	Job	Prod Method		
CODELL	8/30/1984	PR	Gas	DRILLING/CO...	Flowing		
CODELL	8/30/1984	PR	Oil				
CODELL	1/19/2010	PR	Gas	RE-FRAC, 11/1...	Flowing		
CODELL	1/28/2010	PR					
<b>Casing Strings</b>							
<b>Surface Casing, 434.0ftKB</b>							
Casing Description Surface Casing		Run Date 7/29/1984	OD (in) 8 5/8	Wt/Len (l... 24.00	Grade	Top, MD (ft... 13.0	MD (ftKB) 434.0
<b>Production, 7,109.0ftKB</b>							
Casing Description Production		Run Date 8/2/1984	OD (in) 4 1/2	Wt/Len (l... 10.50	Grade	Top, MD (ft... 13.0	MD (ftKB) 7,109.0
<b>Cement</b>							
Description SURFACE CASING CEMENT					Top Depth (ftKB) 13.0		Bottom Depth (ftKB) 434.0
Description PRODUCTION CASING CEMENT					Top Depth (ftKB) 5,830.0		Bottom Depth (ftKB) 7,109.0
<b>Tubing Strings</b>							
Tubing Description Tubing - Production		Run Date 7/7/1989	String... 2 3/8	ID (in) 2.00	Wt (lb/ft) 4.70	Grade J-55	Len (ft) 6,919.00
<b>Tubing Components</b>							
Item Des	OD (in)	Wt (lb/ft)	Grade	Jts	Len (ft)	Btm (ftKB)	Btm (TVD) (ftKB)
Tubing	2 3/8	4.70	J-55	214	6,918.00	6,931.0	
Pump Seating Nipple	2 3/8			1	0.50	6,931.5	
Notched collar	2 3/8			1	0.50	6,932.0	
Tubing Description Tubing - Production	Run Date 12/3/2008	String... 2 3/8	ID (in) 2.00	Wt (lb/ft) 4.70	Grade J-55	Len (ft) 6,932.78	
<b>Tubing Components</b>							
Item Des	OD (in)	Wt (lb/ft)	Grade	Jts	Len (ft)	Btm (ftKB)	Btm (TVD) (ftKB)
Tubing Pup Joint	2 3/8	4.70	J-55	1	10.00	22.2	
Tubing	2 3/8	4.70	J-55	223	6,921.18	6,943.4	
Landing Collar	2 3/8				1.20	6,944.6	
Notched collar	2 3/8				0.40	6,945.0	
Tubing Description Tubing - Frac string		Run Date 11/21/2009	String... 2 7/8	ID (in) 2.44	Wt (lb/ft) 6.50	Grade N-80	Len (ft) 6,890.94
<b>Tubing Components</b>							
Item Des	OD (in)	Wt (lb/ft)	Grade	Jts	Len (ft)	Btm (ftKB)	Btm (TVD) (ftKB)
Cross Over	2 7/8			1	0.50	6.5	

Well Name: HANSCOME C02

VERTICAL, ORIGINAL HOLE, 2/4/2022 9:32:28 AM



Tubing Components							
Item Des	OD (in)	Wt (lb/ft)	Grade	Jts	Len (ft)	Btm (ftKB)	Btm (TVD) (ftKB)
Tubing	2 7/8	6.50	N-80	213	6,572.00	6,578.5	
Cross Over	2 7/8		N-80	1	0.80	6,579.3	
Tubing	2 3/8	4.70	N-80	10	310.53	6,889.8	
Packer	3.99			1	7.11	6,896.9	
Tubing Description		Run Date	String...	ID (in)	Wt (lb/ft)	Grade	Len (ft)
Tubing - Production		12/11/2009	2 3/8	2.00	4.70	J-55	6,929.11

Tubing Components							
Item Des	OD (in)	Wt (lb/ft)	Grade	Jts	Len (ft)	Btm (ftKB)	Btm (TVD) (ftKB)
Tubing Pup Joint	2 3/8	4.70	J-55	1	10.00	21.0	
Tubing	2 3/8	4.70	J-55	223	6,917.46	6,938.5	
Seating Nipple	2 3/8	5.40	J-55	1	1.20	6,939.7	
Notched collar	2 3/8		J-55	1	0.45	6,940.1	

Other In Hole							
Run Date	Des	Make	OD (in)	Top (ftKB)	Btm (ftKB)	Pr op R un	

Logs			
Date	Type	Top, MD (ftKB)	Btm, MD (ftKB)
8/2/1984	COMPENSATED DENSITY	6,650.0	7,098.0
8/2/1984	INDUCTION	434.0	7,098.0
8/6/1984	CEMENT BOND	5,725.0	7,049.0
2/5/2011	GYRO	0.0	6,900.0

Perforation Data					
Linked Zone	Bnch/St g	Sum of Entered Shot Total	Top (ftKB)	Btm (ftKB)	Date
CODELL, ORIGINAL HOLE		56	6,962.00	6,976.00	11/21/2009
CODELL, ORIGINAL HOLE		15	6,962.00	6,976.00	8/6/1984
<b>Total</b>		<b>71</b>			

Stimulation Intervals			
Interval...	Start Date	Primary Job Type	Zone
1	8/20/1984	DRILLING/COMPLETION - ORIGINAL	CODELL, ORIGINAL HOLE
Technical Result		Tech Result Details	Tech Result Note
Comment			
Interval...	Start Date	Primary Job Type	Zone
1	12/4/2009	RE-FRAC	CODELL, ORIGINAL HOLE
Technical Result		Tech Result Details	Tech Result Note
Success		According to Plan	

Comment (CODELL): PRE JOB ISDP OF 2292 PSI AND PRE JOB 5 MINUTE OF 1128 PSI. RAISED RATE TO 17.8 BPM. FRAC CREW ONLY HAD ONE 3" LINE LAID SO WE STAYED AROUND THEIR MAX FOR THEIR IRON FOR SAFETY PURPOSES. RAISED GEL TO 26 CPS FOR THE ENTIRE JOB. RAN THE 3 PSA STAGE AS A 2-4 PSA RAMP STAGE. TREATMENT WENT WELL. AVG VISC 25.4 CPS, AVG TEMP 60.3F, AVG PH 10.26. POST JOB 5 MINUTE OF 3253 PSI.