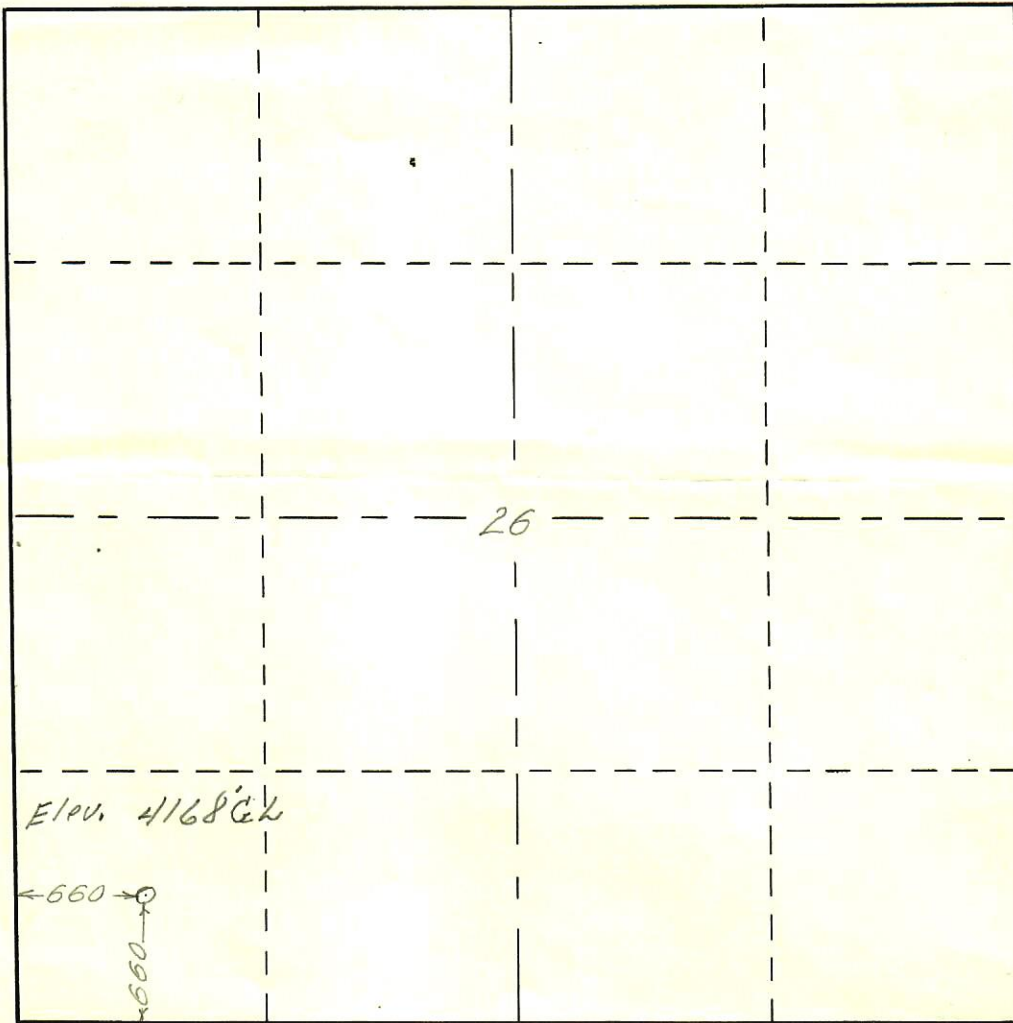




00264552

R. 53 W

T.
9
N

Scale ... 1" = 1000'

Powers Elevation Company of Casper, Wyoming
has in accordance with a request from *Mr. Speck*
for *Mc Dermott & Barnhart* determined the
Location of *# 1-C Croy*
to be *C SW SW* Section *26* Township *9 N*
Range *53 W* of the *Sixth Principal Meridian*
Logan County, *Colo.*

The above Plat shows the location of the well site
in said section.

Powers Elevation Company

by: *Thomas E Nelson*Date: *6-27-54*