



HighPoint Operating Corporation

Intermediate Post Job Report

Critter Creek 540-1411H

S:14 T:11N R:63W Weld CO

Quote #:

14945

I Execution #:

08502



HighPoint Operating Corporation

Attention: Mr. Matthew Schwartz | (303) 312-8142 | mschwartz@hpres.com

Highpoint Operation Corporation | 1099 18th St. | Denver, CO. 80202

Dear Mr. Matthew Schwartz,

Thank you for the opportunity to provide cementing services on this well. BJ Services strives to achieve complete customer satisfaction. If you have any questions regarding the services or data provided, please contact BJ Services at any time.

Sincerely,
Jason Creel
Field Engineer I | (307) 256-0306 | jason.creel@bjservices.com

Field Office 1716 East Allison Rd., Cheyenne WY, 82007
Phone: (307) 638-5585

Sales Office 999 18th St. Suite 1200 Denver, CO 80202
Phone: (281) 408-2361

Cementing Treatment



Start Date	7/8/18	Field Ticket#	08502-X5X4R60202-92805
End Date	7/8/18	Well	CRITTER CREEK 540-1411H
Client	HighPoint Operating Corporation	API#	05-123-46848
Client Field Rep.	Dustin	County	WELD
Service Sup.	Roger Acuna	State/Province	CO
District	Cheyenne, WY	Rig	Savanna 802
Type of Job	Intermediate	Project ID	PRJ1008420
Execution ID	EXC-08502-X5X4R602		

WELL GEOMETRY

Type	ID (in)	OD (in)	Wt. (lb/ft)	MD (ft)	TVD (ft)	Excess(%)	Grade
Previous Casing	8.92	9.63	36.00	1,557.00	1,557.00		
Open Hole	8.75			7,796.00	7,298.00	18.00	
Casing	6.37	7.00	23.00	7,776.00	7,298.00		J-55

Shoe Length (ft): 46'

HARDWARE

Top Plug Used?	Yes	Max Casing Pressure - Rated (psi)	3240
Top Plug Provided By	Rig	Max Casing Pressure - Operated (psi)	2500
Top Plug Size	7"	Pipe Movement	No
Centralizers Used	Yes	Job Pumped Through	Casing
Centralizers Quantity	13	Top Connection Thread	LTC
Centralizers Type	Bow, Solid	Top Connection Size	7"
Landing Collar Depth (ft)	7,776'		

CIRCULATION PRIOR TO JOB

Well Circulated By	Rig	PV Mud Out	8
Circulation Prior to Job	Yes	YP Mud In	4
Circulation Time (min)	90	YP Mud Out	4
Circulation Rate (bpm)	10	Solids Present at End of Circulation	No
Circulation Volume (bbls)	900	10 sec SGS	3
Lost Circulation Prior to Cement Job	No	10 min SGS	6
Mud Density In (ppg)	10	Flare Prior to/during the Cement Job	No
Mud Density Out (ppg)	10	Gas Present	No
PV Mud In	8		

Cementing Treatment



TEMPERATURE

Ambient Temperature (°F)	90°	Slurry Cement Temperature (°F)	65°
Mix Water Temperature (°F)	65°	Flow Line Temperature (°F)	125°

BJ FLUID DETAILS

Fluid Type	Fluid Name	Density (ppg)	Yield (Cu Ft/sk)	H2O Req. (gals/sk)	Planned Top of Fluid (Ft)	Length (Ft)	Vol (sk)	Vol (Cu Ft)	Vol (bbls)
Spacer / Pre Flush / Flush	IntegraGuard EZ Spacer	11.0000			667.00				20.0000
Lead Slurry	BJCem I100.3.01C	12.5000	2.0735	11.83	1,340.00	5,904.00	510	1,046.0000	188.0000
Tail Slurry	BJCem I100.6.01C	15.8000	1.1550	4.98	7,244.00	500.00	85	98.0000	17.4000
Displacement Final	Water	8.3300			0.00			0.0000	304.0000

Fluid Type	Fluid Name	Component	Concentration	UOM
Spacer / Pre Flush / Flush	IntegraGuard EZ Spacer	GELLANT WATER, GW-86	0.8000	PPB
Spacer / Pre Flush / Flush	IntegraGuard EZ Spacer	SAND, S-8, Silica Flour, 200 Mesh	179.6000	PPB
Spacer / Pre Flush / Flush	IntegraGuard EZ Spacer	RETARDER, SR-20	1.0200	PPB
Spacer / Pre Flush / Flush	IntegraGuard EZ Spacer	SPACER SURFACTANT, SS-6	0.5000	GPB
Lead Slurry	BJCem I100.3.01C	RETARDER, SR-20	0.4000	BWOB
Lead Slurry	BJCem I100.3.01C	CEMENT, ASTM TYPE III	100.0000	PCT
Lead Slurry	BJCem I100.3.01C	FLUID LOSS, FL-24	0.3000	BWOB
Lead Slurry	BJCem I100.3.01C	FOAM PREVENTER, FP-25	0.3000	BWOB
Lead Slurry	BJCem I100.3.01C	BONDING AGENT, BA-60	0.3000	BWOB
Tail Slurry	BJCem I100.6.01C	DISPERSANT, CD-31	0.2000	BWOB
Tail Slurry	BJCem I100.6.01C	CEMENT, CLASS G	100.0000	PCT
Tail Slurry	BJCem I100.6.01C	FLUID LOSS, FL-24	0.2000	BWOB
Tail Slurry	BJCem I100.6.01C	BONDING AGENT, BA-60	0.2000	BWOB
Tail Slurry	BJCem I100.6.01C	RETARDER, R-6	0.1000	BWOB
Tail Slurry	BJCem I100.6.01C	FOAM PREVENTER, FP-25	0.3000	BWOB

Cementing Treatment



TREATMENT SUMMARY

Fluid	Rate (bpm)	Fluid Vol. (bbls)
IntegraGuard EZ Spacer	5.00	20.00
BJCem I100.3.01C	5.00	188.00
BJCem I100.6.01C	3.00	17.40
Water	6.00	304.00

DISPLACEMENT AND END OF JOB SUMMARY

Displaced By	BJ Services	Amount of Cement Returned/Reversed	30bbls
Calculated Displacement Volume (bbls)	304	Method Used to Verify Returns	Visual
Actual Displacement Volume (bbls)	304	Amount of Spacer to Surface	20
Did Float Hold?	Yes	Amount Bled Back After Job	2.5
Bump Plug	Yes	Total Volume Pumped (bbls)	529.4
Bump Plug Pressure (psi)	2500	Top Out Cement Spotted	No
Were Returns Planned at Surface	Yes	Lost Circulation During Cement Job	No
Cement returns During Job	Yes		

Event Log



Customer Name: HighPoint Operating Corpor
Well Name: CRITTER CREEK 540-1411H
Job Type: Intermediate
TMD (ft): 7776'

District: Cheyenne, WY
Field Leader: Roger Acuna
Quote ID: QUO-14945-L1B7R1
Plan ID: ORD-08502-X5X4R6
Execution ID: EXC-08502-X5X4R602

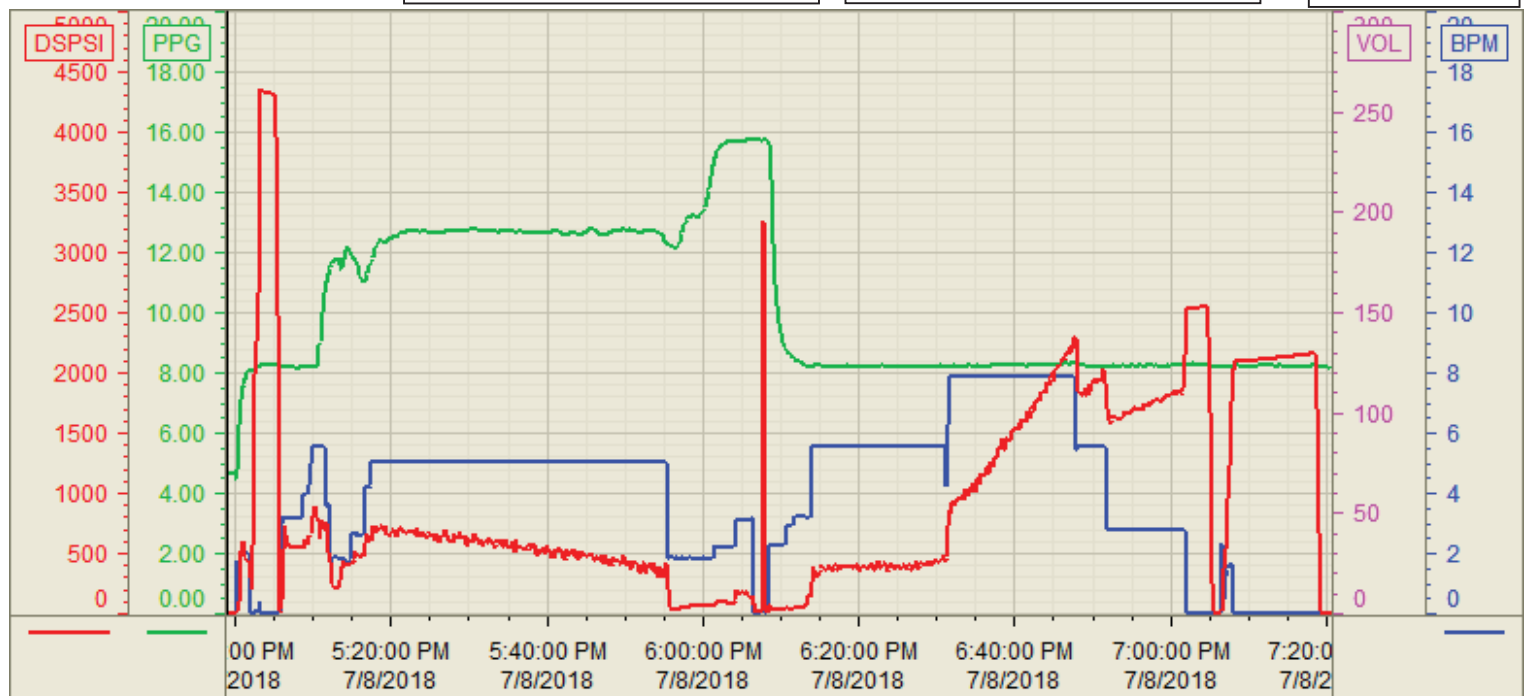
Seq.	Start Dt./Time	Event	Density (ppg)	Pump Rate (bpm)	Pump Vol (bbls)	Pipe Pressure (psi)	Comments
1	07/08/2018 07:00	Callout					CALLED OUT RTS 14:00
2	07/08/2018 10:45	Safety Meeting					JOURNEY MANAGEMENT WITH BJ CREW
3	07/08/2018 11:00	Leave Location					DEPART CHEYENNE WY CAMP
4	07/08/2018 11:45	Arrive on Location					ARRIVE TO LOCATION, CHECK IN WITH COMAPNY MAN
5	07/08/2018 12:00	Customer					WAITING ON RIG TO FINISH RUNNING CASING
6	07/08/2018 15:00	Safety Meeting					RIG IN STEACS WITH BJ CREW
7	07/08/2018 15:30	Rig Up					RIG IN IRON AND HOSES
8	07/08/2018 16:30	Safety Meeting					PRE JOB SAFETY MEETING TO DISCUSS JOB PROCEDURES AND HAZARDS
9	07/08/2018 17:02	Start Pumping	8.3300	3.00	3.00	800.00	FILL LINES 3BBLS FRESH WATER
10	07/08/2018 17:05	Pressure Test				4,000.00	TEST LINES 4000PSI
11	07/08/2018 17:09	Pump Spacer	8.3300	3.00	17.00	620.00	PUMP 17BBLS FRESH WATER
12	07/08/2018 17:12	Pump Spacer	11.0000	5.00	20.00	620.00	PUMP 20BBLS INTEGRAGUARD EZ SPACER @ 11PPG
13	07/08/2018 17:19	Pump Lead Cement	12.5000	5.00	188.00	500.00	PUMP 188BBLS BJCEM I100.3.01C @ 12.5PPG (510SKS 2.07YLD 11.83GPS) CALCULATED TOP 311'
14	07/08/2018 17:57	Pump Tail Cement	15.8000	3.00	17.50	100.00	PUMP 17.5BBLS BJCEM I100.6.01C @ 15.8PPG (85SKS 1.16YLD 4.98GPS) CALCULATED TOP 7198'
15	07/08/2018 18:10	Drop Top Plug					DROP TOP PLUG
16	07/08/2018 18:11	Pump Displacement	8.3300	6.00	294.00	1,800.00	PUMP FRESH WATER DISPLACEMENT
17	07/08/2018 18:20	End Pumping					SHUTDOWN
18	07/08/2018 18:51	Spacer Back to Surface					SPACER TO SURFACE @ 257BBLS INTO DISPLACEMENT
19	07/08/2018 18:54	Cement Back to Surface					CEMENT TO SURFACE @ 277BBLS INTO DISPLACEMENT
20	07/08/2018 18:54	Pump Displacement	8.3300	3.00	10.00	1,700.00	SLOW RATE TO LAND PLUG
21	07/08/2018 19:04	Land Plug	8.3300			2,500.00	LAND PLUG 500 PSI OVER FINAL CIRCULATING PRESSURE
22	07/08/2018 19:06	Check Floats					CHECK FLOATS, FLOATS HELD GETTING 2.5BBLS BACK TO THE PUMP
23	07/08/2018 19:10	Pressure Test	8.3300			2,000.00	PRESSURE TEST CASING 2000PSI HELD FOR 10MIN
24	07/08/2018 19:20	End Pumping					END JOB
25	07/08/2018 19:30	Safety Meeting					RIG OUT STEACS WITH BJ CREW
26	07/08/2018 19:30	Rig Down					RIG OUT IRON AND HOSES
27	07/08/2018 19:30	Safety Meeting					JOURNEY MANAGEMENT WITH BJ CREW
28	07/08/2018 20:00	Leave Location					DEPART LOCATION

Customer: HighPoint
Well Number: 540-1411H
Lease Info: Critter Creek



Print Date/Time

7/8/2018 7:41:32 PM



	Name	Y value	X value/time stamp	Tag name Y
1	DS - Press(PSI)	4.6	7/8/2018 4:59:01 PM	Cementer\DS_DISCHARGE_PRESS_DIAL
2	DH - Density (PPG)	4.72	7/8/2018 4:58:57 PM	Cementer\DENSITY2_ACTUAL_RATE
3	Combined rate (BPM)	0.00	7/8/2018 4:58:57 PM	Cementer\Flow_Combined
4				
5				

Source: Control1 7:41:27 PM