

HALLIBURTON

iCem® Service

HIGHPOINT RESOURCES CORP-EBUS

United States of America, COLORADO

For: Damien "Goose" Hunter

Date: Monday, October 08, 2018

WELD

Highpoint Resources Critter Creek 15-6104XBW

Job Date: Monday, October 08, 2018

SO# 905193925

Sincerely,

Prince A Perez

Legal Notice

Disclaimer:

All information in this report is provided subject to the terms and conditions which govern the services provided by Halliburton. Halliburton personnel use their best efforts in gathering information and their best judgment in interpreting it, but any interpretation, research, analysis or recommendation furnished by Halliburton are opinions based upon inferences from measurements and empirical relationships and assumptions, which inferences and empirical relationships and assumptions are not infallible, and with respect to which professionals in the industry may differ. iCem 3D Displacement results are used to understand how fluids intermix during a cement job. Simulation and 3D displacement results are not intended as and should not be used as a replacement for bond logs in determining top of cement. Current 3D model calculations are known to model more volume than the input volume for standard cases due to known calculation improvements required. For rotational cases, the modeled volume will be impacted by the same calculations impacting the standard cases, as well as additional constraints imposed to make the calculation time required operationally feasible. Therefore, until further notice, 3D displacement results should not be used for replacement of a bond log, or used as an identifier of top of cement. HALLIBURTON IS UNABLE TO GUARANTEE THE ACCURACY OF ANY CHART INTERPRETATION, RESEARCH ANALYSIS, OR JOB RECOMMENDATION and any interpretation or recommendation is not for use of or reliance upon by any third party. The customer has full responsibility for any of its decisions which are based on the information provided in this report.

Table of Contents

1.0 Real-Time Job Summary 6

1.1 Job Event Log 6

2.0 Attachments..... 11

2.1 Highpoint Resources Critter Creek 15-6104XBW-Custom Results.png 11

2.2 Highpoint Resources Critter Creek 15-6104XBW-Custom Results (1).png 12

2.3 Highpoint Resources Critter Creek 15-6104XBW-Custom Results (2).png 13

The Road to Excellence Starts with Safety

Sold To #: 343492		Ship To #: 3906206		Quote #: 0022499299		Sales Order #: 0905193925					
Customer: HIGHPOINT RESOURCES CORP-EBUS				Customer Rep: Damien "Goose" Hunter							
Well Name: CRITTER CREEK			Well #: 15-6104XBW			API/UWI #: 05-123-47895-00					
Field: HEREFORD		City (SAP): HEREFORD		County/Parish: WELD		State: COLORADO					
Legal Description: SW SW-15-11N-63W-400FSL-1190FWL											
Contractor: CADE DRLG				Rig/Platform Name/Num: CADE 24							
Job BOM: 17,820											
Well Type: HORIZONTAL OIL											
Sales Person: HALAMERICA/H139013				Srvc Supervisor: Prince Perez							
Job											
Formation Depth (MD)		Top	0	Bottom		17,820'					
Job depth MD		17,812'		Job Depth TVD		7,336'					
				Wk Ht Above Floor		8'					
Well Data											
Description	New / Used	Size in	ID in	Weight lbm/ft	Thread	Grade	Top MD ft	Bottom MD ft	Top TVD ft	Bottom TVD ft	
Drill Pipe		4	3.34	14			0	7490	0		
Casing		7	6.366	23			0	7847	0		
Casing		4.5	4	11.6			7490	17812	0		
Open Hole Section			6.125				7847	17812	0		
Tools and Accessories											
Type	Size in	Qty	Make	Depth ft		Type	Size in	Qty	Make		
Guide Shoe	4.5	1		17812		Top Plug	4.5			PACKERS	
Float Shoe	4.5	1				Bottom Plug	4.5			PACKERS	
Float Collar	4.5	1		17,759							
						Plug Container	4.5			PACKERS	
						Centralizers	4.5	200		WF	
Fluid Data											
Stage/Plug #: 1											
Fluid #	Stage Type	Fluid Name			Qty	Qty UoM	Mixing Density lbm/gal	Yield ft3/sack	Mix Fluid Gal	Rate bbl/min	Total Mix Fluid Gal
1	Spacer	Mud Flush III			20	bbl	8.4				

Fluid #	Stage Type	Fluid Name	Qty	Qty UoM	Mixing Density lbm/gal	Yield ft3/sack	Mix Fluid Gal	Rate bbl/min	Total Mix Fluid Gal
2	Spacer	Tuned Spacer III	20	bbl	12	3.21	20.1	3	703
Fluid #	Stage Type	Fluid Name	Qty	Qty UoM	Mixing Density lbm/gal	Yield ft3/sack	Mix Fluid Gal	Rate bbl/min	Total Mix Fluid Gal
3	Cement	NeoCem TM	530	sack	13.2	2.04	9.74	5	5,162
Fluid #	Stage Type	Fluid Name	Qty	Qty UoM	Mixing Density lbm/gal	Yield ft3/sack	Mix Fluid Gal	Rate bbl/min	Total Mix Fluid Gal
4	Displacement	Fresh Water	213	bbl	8.4				
Cement Left In Pipe		Amount	0 ft		Reason			Wet Shoe	
Mix Water:		pH 7	Mix Water Chloride:		<300 ppm		Mix Water Temperature:		58 °F
Cement Temperature:		## °F	Plug Displaced by:		8.34 lb/gal		Disp. Temperature:		58 °F
Plug Bumped?		Yes	Bump Pressure:		1450 psi		Floats Held?		Yes
Cement Returns:		3 bb	Returns Density:		## lb/gal		Returns Temperature:		## °F
Comment									
Pumped 20 bbls of Mud Flush.									
Pumped 20 bbls of Tuned Spacer III.									
Pumped 193 bbls of NeoCem.									
Pumped 213 bbls of freshwater Displacement with MMCR in the first 20 bbls and 10 gallons of Anhib and 50 lbs of Oxygen throughout.									
Pumped a 5 bbl wet shoe.									
2 bbls back on the floats.									
Pumped 200 bbls to circulated out the well.									
3 bbls of cement back.									

1.0 Real-Time Job Summary

1.1 Job Event Log

Type	Seq. No.	Activity	Graph Label	Date	Time	Source	DH Density (ppg)	Comb Pump Rate (bbl/min)	PS Pump Press (psi)	Pump Stg Tot (bbl)	Comments
Event	1	Call Out	Call Out	10/7/2018	14:00:00	USER					CREW CALLED OUT AT 14:00, REQUESTED ON LOCATION 20:00. CREW PICKED UP CEMENT, CHEMICALS, FROM FT. LUPTON, CO. BULK 660 10867431, 11527037, 11381117, PUMP 11189145.
Event	2	Pre-Convoy Safety Meeting	Pre-Convoy Safety Meeting	10/7/2018	17:10:00	USER					DISCUSSED ROUTES, HAZARDS, AND COMMUNICATION WITH CREW.
Event	3	Crew Leave Shop	Crew Leave Shop	10/7/2018	17:20:00	USER					STARTED JOURNEY MANAGEMENT.
Event	4	Arrive at Location from Service Center	Arrive at Location from Service Center	10/7/2018	19:50:00	USER					END JOURNEY MANAGEMENT. MET WITH COMPANY MAN AND TOOL HAND TO DISCUSS JOB DETAILS. TD-17,820', TP-17,812', LINER CASING- 7,490', 11.6 LB/FT 4.5" P-110, 4" 28# HWDP- 6,477', 4" 14# DP-1,020', PC- 7,847' 7" 23 LB/FT, WF- 8.8 LB/GAL.
Event	5	Safety Meeting - Assessment of Location	Safety Meeting - Assessment of Location	10/7/2018	20:00:00	USER					HAZARD HUNT. DISCUSSED POSSIBLE HAZARDS ASSOCIATED WITH LOCATION, RIG UP AND

WEATHER.

Event	6	Rig-Up Equipment	Rig-Up Equipment	10/7/2018	20:10:00	USER						RIG UP BULK AND MIXING EQUIPMENT.
Event	7	Rig-Up Completed	Rig-Up Completed	10/7/2018	21:10:00	USER						
Event	8	Pre-Job Safety Meeting	Pre-Job Safety Meeting	10/7/2018	22:30:00	USER						MEETING WITH HALLIBURTON AND RIG PERSONNEL. COMMUNICATED POTENTIAL SAFETY HAZARDS AND JOB DETAILS.
Event	9	Start Job	Start Job	10/7/2018	22:51:37	COM4						BEGIN RECORDING JOB DATA.
Event	10	Test Lines	Test Lines	10/7/2018	22:58:21	COM4			6969.00			PRESSURE TESTED IRON TO 6,500 PSI. KICKOUTS SET @ 500 PSI, KICKED OUT @ 400 PSI, 5TH GEAR STALL OUT @ 1,940 PSI. KICKOUTS SET @ 6,500 PSI, KICKED OUT @ 6,600 PSI.
Event	11	Pump Spacer 1	Pump Spacer 1	10/7/2018	23:02:24	COM4	8.4	2	530	20		PUMPED 20 BBLS OF MUD FLUSH @ 8.4 LBS/GAL. HOMF CALCULATED @ 840.3', TOMF CALCULATED 4,838' DPIN. PUMP RATE @ 2 BBLS/MIN @ 530 PSI
Event	12	Pump Spacer 2	Pump Spacer 2	10/7/2018	23:11:39	COM4	12	3.00	568.00	20		PUMP 20 BBLS OF TUNED SPACER @ 12 LB/GAL, 3.21 FT3/SK, 20.1 GAL/SK. HOS DPIN CALCULATED @ 840.3'. TOS DPIN CALCULATED @ 5,678.3' DENSITY VERIFIED BY PRESSURIZED MUD SCALES.

PUMP RATE 3 BBLS/MIN @
560 PSI.

Event	13	Pump Cement	Pump Cement	10/7/2018	23:18:26	COM4	13.2	5	680	193	PUMP 530 SKS OF NEOCEM @ 13.2 LB/GAL, 2.04 FT3/SK, 9.74 GAL/SK, 192.56 BBLS, DENSITY VERIFIED BY PRESSURIZED MUD SCALES. TOC CALCULATED @ 6,518'. PUMP RATE 5 BBLS/MIN @ 680 PSI.
Event	14	Check Weight	Check Weight	10/7/2018	23:21:41	COM4	13.19				
Event	15	Check Weight	Check Weight	10/7/2018	23:33:02	COM4	13.18				
Event	16	Check Weight	Check Weight	10/7/2018	23:51:40	COM4	13.16				
Event	17	Shutdown	Shutdown	10/8/2018	00:01:03	COM4					SHUTDOWN TO DROP DART/CLEAN LINES.
Event	18	Drop Top Plug	Drop Top Plug	10/8/2018	00:13:15	COM4					
Event	19	Pump Displacement	Pump Displacement	10/8/2018	00:13:18	COM4	8.34	5	2250	213.34	BEGIN DISPLACEMENT WITH 213.34 BBLS OF FRESH WATER AND MMCR IN THE FIRST 20 BBLS OF DISPLACEMENT. 10 GALLONS OF ANHIB AND 50 LBS OF OXYGEN THROUGHOUT.
Event	20	Bump Plug	Bump Plug	10/8/2018	01:01:26	COM4			1953.00		PLUG BUMPED AT CALCULATED DISPLACEMENT. PRESSURED 500 PSI OVER FINAL CIRCULATING

PRESSURE.

Event	21	Other	Other	10/8/2018	01:04:33	COM4		RELEASED PRESSURE, FLOATS HELD, 2 BBLS BACK.
Event	22	Shift Tool - Upper	Shift Tool - Upper	10/8/2018	01:07:18	USER	5128.00	SHEARED TOOL @ 5,130 PSI.
Event	23	Pressure Up Well	Pressure Up Well	10/8/2018	01:30:04	COM4	2074.00	PRESSURED UP THE BACKSIDE TO 2,000 PSI.
Event	24	Circulate Well	Circulate Well	10/8/2018	01:36:36	USER	200	CIRCULATED WELL WITH FRESH WATER TO CLEAN CEMENT AND SPACER FROM TOP OF HANGER. CIRCULATED 20 BBLS OF MUD FLUSH, 20 BBLS OF TUNED SPACER III & 23 BBLS OF CEMENT OFF LINER.
Event	25	End Job	End Job	10/8/2018	02:05:36	USER		STOP RECORDING JOB DATA.
Event	26	Post-Job Safety Meeting (Pre Rig-Down)	Post-Job Safety Meeting (Pre Rig-Down)	10/8/2018	02:15:00	USER		DISCUSSED POSSIBLE HAZARDS ASSOCIATED WITH WEATHER, LOCATION AND RIGGING DOWN IRON AND HOSES.
Event	27	Rig-Down Equipment	Rig-Down Equipment	10/8/2018	02:25:00	USER		RIG DOWN BULK AND MIXING EQUIPMENT.
Event	28	Rig-Down Completed	Rig-Down Completed	10/8/2018	03:25:00	USER		
Event	29	Pre-Convoy Safety Meeting	Pre-Convoy Safety Meeting	10/8/2018	04:50:00	USER		DISCUSSED ROUTES HAZARDS AND COMMUNICATION WITH CREW.
Event	30	Crew Leave Location	Crew Leave Location	10/8/2018	05:00:00	USER		THANK YOU FOR USING

2.0 Attachments

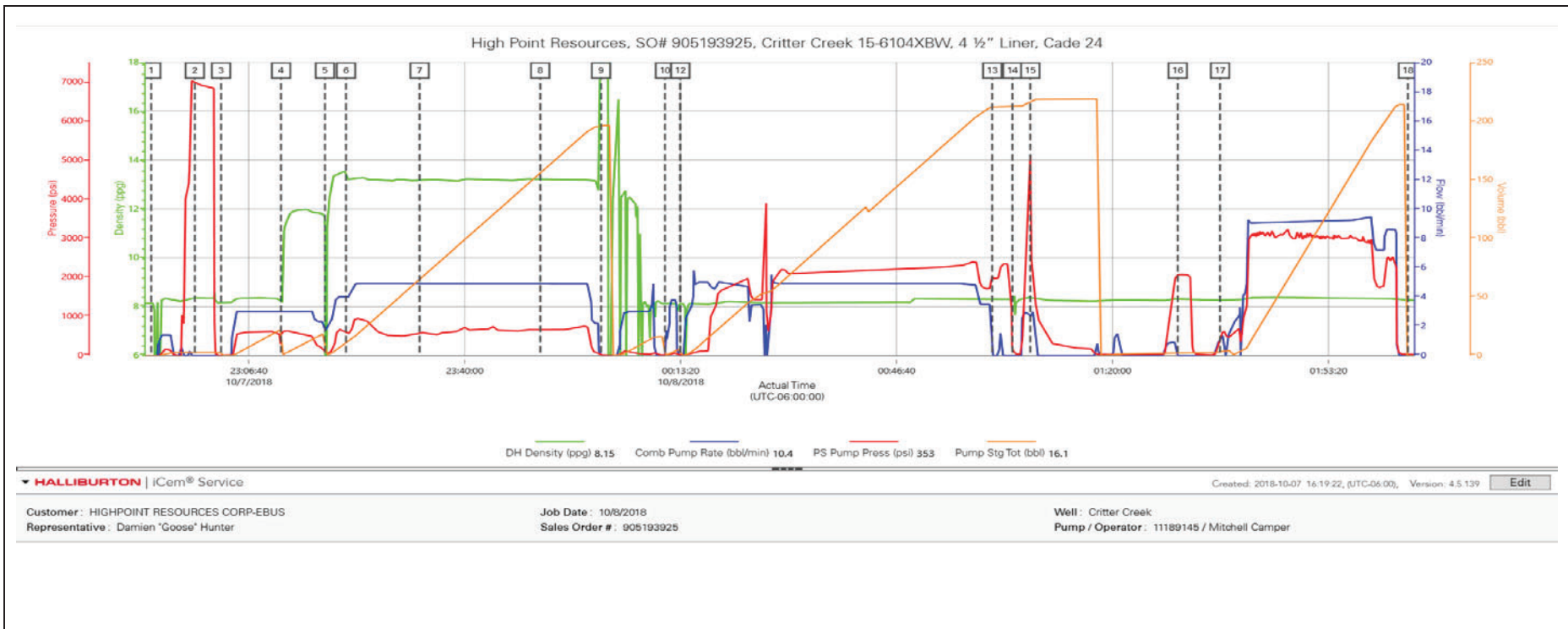
2.1 Highpoint Resources Critter Creek 15-6104XBW-Custom Results.png

Description	Actual Time (UTC-06:00:00)	DH Density (ppg)	Comb Pump Rate (bbl/min)	PS Pump Press (psi)	Pump Stg Tot (bbl)	
1 Start Job	22:51:37	8.12	0.00	-8.00	0.00	
2 Test Lines	22:58:21	8.36	0.00	6969.00	2.80	
3 Pump Spacer 1	23:02:24	8.16	0.00	-2.00	2.80	
4 Pump Spacer 2	23:11:39	8.27	3.00	568.00	0.00	
5 Pump Cement	23:18:26	11.21	1.70	73.00	0.00	
6 Check Weight	23:21:41	13.19	4.00	597.00	10.40	
7 Check Weight	23:33:02	13.18	4.90	544.00	64.90	
8 Check Weight	23:51:40	13.16	4.90	664.00	155.50	
9 Shutdown	00:01:03	19.63	0.00	14.00	196.00	
10 Other	00:10:55	8.12	0.00	9.00	0.00	
11 Drop Top Plug	00:13:15	8.12	0.00	9.00	5.20	
12 Pump Displacement	00:13:18	8.13	0.00	8.00	5.20	
13 Bump Plug	01:01:26	8.33	0.00	1953.00	212.00	
14 Other	01:04:33	8.30	0.00	182.00	212.30	
15 Shift Tool - Upper	01:07:18	8.41	2.70	5128.00	216.10	
16 Pressure Up Well	01:30:04	8.33	0.00	2074.00	2.70	
17 Circulate Well	01:36:36	8.28	1.00	372.00	3.30	
18 End Job	02:05:36	8.27	0.00	28.90	0.00	

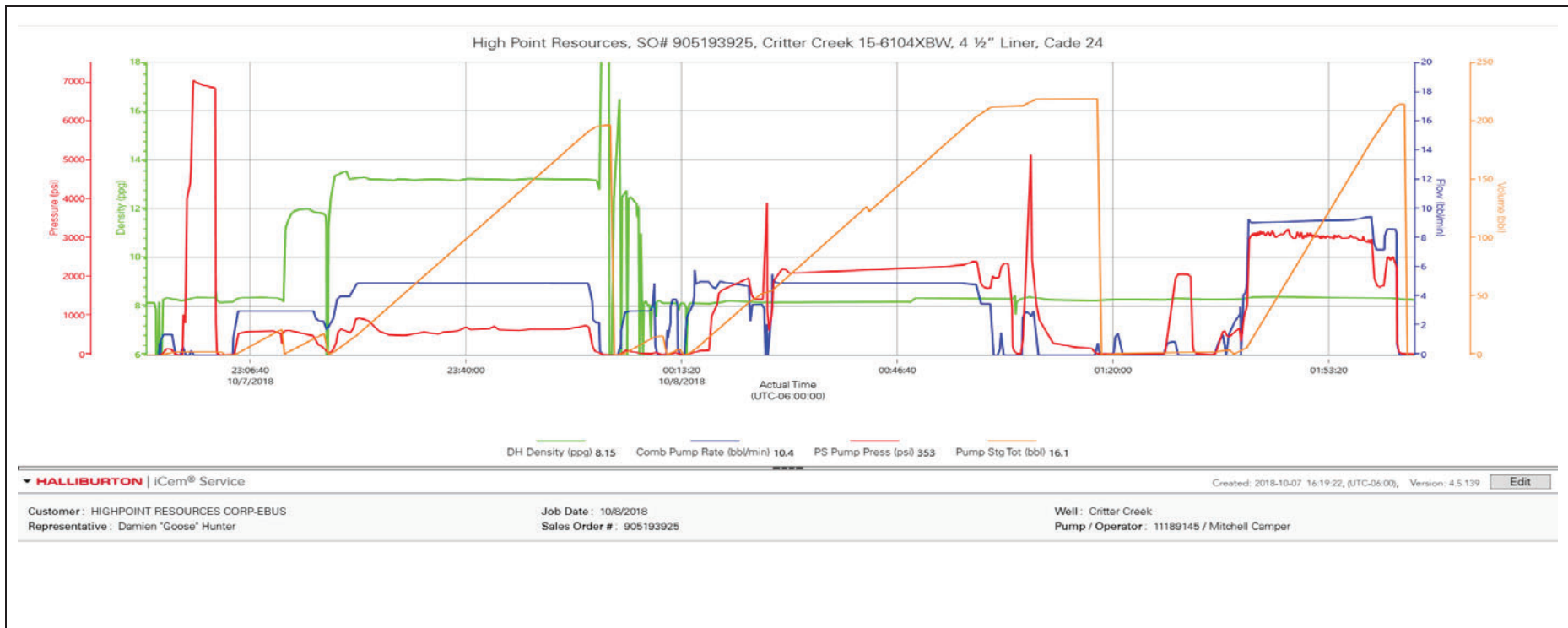
▼ HALLIBURTON | iCem® Service

Created: 2018-10-07 16:19:22, (UTC-06:00), Version: 4.5.139 [Edit](#)

2.2 Highpoint Resources Critter Creek 15-6104XBW-Custom Results (1).png



2.3 Highpoint Resources Critter Creek 15-6104XBW-Custom Results (2).png



3.0