

UPLAND EXPLORATION



Location:	COLORADO	Slot:	SLOT#02 SALT RANCH FEE #207-2029H (331°FSL & 938°FEL, SEC.18)
Field:	WELD COUNTY (TRUE NORTH NAD 83)	Well:	SALT RANCH FEE #207-2029H
Facility:	SEC.18-T11N-R64W	Wellbore:	SALT RANCH FEE #207-2029H PWB
Plot reference wellpath is SALT RANCH FEE #207-2029H PWP Rev-A.0		Grid System: NAD83 / Lambert Colorado SP, Northern Zone (501), US feet	
True vertical depths are referenced to Rig (23) (KB)		North Reference: True north	
Reference wellpath measured depths are referenced to Rig (23) (KB)		Scale: True distance	
Rig (23) (KB) to Mean Sea Level: 5626 feet		Coordinates are in feet referenced to Slot	
Mean Sea Level to Ground level (At Slot: SLOT#02 SALT RANCH FEE #207-2029H (331°FSL & 938°FEL, SEC.18)): 0 feet		Depths are in feet	
Offset wellpath MDs are referenced to each path's default MD datum		Created by: paincetr on 2021-01-20; Database: WellArchitectDB	

Location Information

Facility Name	Grid East (US ft)	Grid North (US ft)	Latitude	Longitude
SEC.18-T11N-R64W	3253152.526	1577318.920	40°54'52.2720"N	104°35'2.6880"W
Slot	Local N (ft)	Local E (ft)	Grid East (US ft)	Grid North (US ft)
SLOT#02 SALT RANCH FEE #207-2029H (331°FSL & 938°FEL, SEC.18)	0.00	16.58	3253169.109	1577319.091
Rig (23) (KB) to Ground level (At Slot: SLOT#02 SALT RANCH FEE #207-2029H (331°FSL & 938°FEL, SEC.18))	5626ft			
Mean Sea Level to Ground level (At Slot: SLOT#02 SALT RANCH FEE #207-2029H (331°FSL & 938°FEL, SEC.18))	0ft			
Rig (23) (KB) to Mean Sea Level	5626ft			

Hole and Casing Sections

Name	Start MD (ft)	End MD (ft)	Interval (ft)	Start TVD (ft)	End TVD (ft)	Start Local N (ft)	Start Local E (ft)	End Local N (ft)	End Local E (ft)	Wellbore
9.625in Casing Surface	23.00	1500.00	1477.00	23.00	1500.00	0.00	0.00	0.00	0.00	SALT RANCH FEE #207-2029H PWB

Survey Program

Start MD (ft)	End MD (ft)	Tool	Model	Log Name/Comment	Wellbore
23.00	1500.00	BH NavTrak (2019)	BH NavTrak (2019) (Axial)		SALT RANCH FEE #207-2029H PWB
1500.00	18531.52	BH AutoTrak Curve/Press (2019)	BH AutoTrak Curve/Press (2019) (Short spacing)		SALT RANCH FEE #207-2029H PWB

Bottom Hole Location

MD (ft)	Inc (°)	Az (°)	TVD (ft)	Local N (ft)	Local E (ft)	Grid East (US ft)	Grid North (US ft)	Latitude	Longitude
18531.52	90.233	181.047	7948.00	-10595.00	2093.18	3255371.67	1566746.05	40°53'7.5840"N	104°34'35.2200"W

Targets

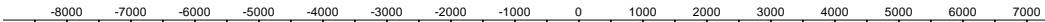
Name	MD (ft)	TVD (ft)	Local N (ft)	Local E (ft)	Grid East (US ft)	Grid North (US ft)	Latitude	Longitude
SEC.20-T11N-R64W	N/A	0.00	0.00	-16.58	3253152.53	1577318.92	40°54'52.2720"N	104°35'2.6880"W
SEC.20/29-T11N-R64W (SB 4607)	N/A	0.00	0.00	-16.58	3253152.53	1577318.92	40°54'52.2720"N	104°35'2.6880"W
SEC.29-T11N-R64W	N/A	0.00	0.00	-16.58	3253152.53	1577318.92	40°54'52.2720"N	104°35'2.6880"W
SALT RANCH FEE #207-2029H BHL REV-1(300°FNL & 1019°FWL, SEC.20)	18531.52	7948.00	-10595.00	2093.18	3255371.67	1566746.05	40°53'7.5840"N	104°34'35.2200"W
SALT RANCH FEE #207-2029H WP REV-1	13546.43	7968.00	-5610.79	2178.45	3255405.45	1571730.98	40°53'56.8320"N	104°34'34.1040"W
SALT RANCH FEE #207-2029H LP REV-1(300°FNL & 1019°FWL, SEC.20)	8553.42	7974.00	-622.95	1951.37	3255126.85	1576716.32	40°54'46.1160"N	104°34'37.0560"W

Well Profile Data

Design Comment	MD (ft)	Inc (°)	Az (°)	TVD (ft)	Local N (ft)	Local E (ft)	DLS (°/100ft)	VS (ft)
Tie On	23.00	0.000	94.883	23.00	0.00	0.00	0.00	0.00
End of Tangent	1600.00	0.000	94.883	1600.00	0.00	0.00	0.00	0.00
Build (XS)	2841.85	18.628	94.883	2820.09	-17.03	199.37	1.50	55.35
KOP	7822.76	18.628	94.883	7540.06	-152.45	1784.59	0.00	495.45
LANDING	8553.42	90.069	177.393	7974.00	-622.95	1951.37	12.00	989.35
WP1	13546.43	90.069	177.393	7968.00	-5610.79	2178.45	0.00	5926.62
3D Arc (J)	13729.31	90.233	181.047	7967.52	-5793.63	2180.94	2.00	6106.47
TD	18531.52	90.233	181.047	7948.00	-10595.00	2093.18	0.00	10799.78

Scale 1 inch = 750

Easting (ft)



SLOT#02 SALT RANCH FEE #207-2029H (331°FSL & 938°FEL, SEC.18)

Tie On : 23.00ft TVD, 0.00ft N, 0.00ft E

9.625in Casing Surface : 1500.00ft TVD, 0.00ft N, 0.00ft E

KOP : 7540.06ft TVD, 152.45ft S, 1784.59ft E

LANDING : 7974.00ft TVD, 622.95ft S, 1951.37ft E

SALT RANCH FEE #207-2029H LP REV-1(300°FNL & 1019°FWL, SEC.20)

WP1 : 7968.00ft TVD, 5610.79ft S, 2178.45ft E

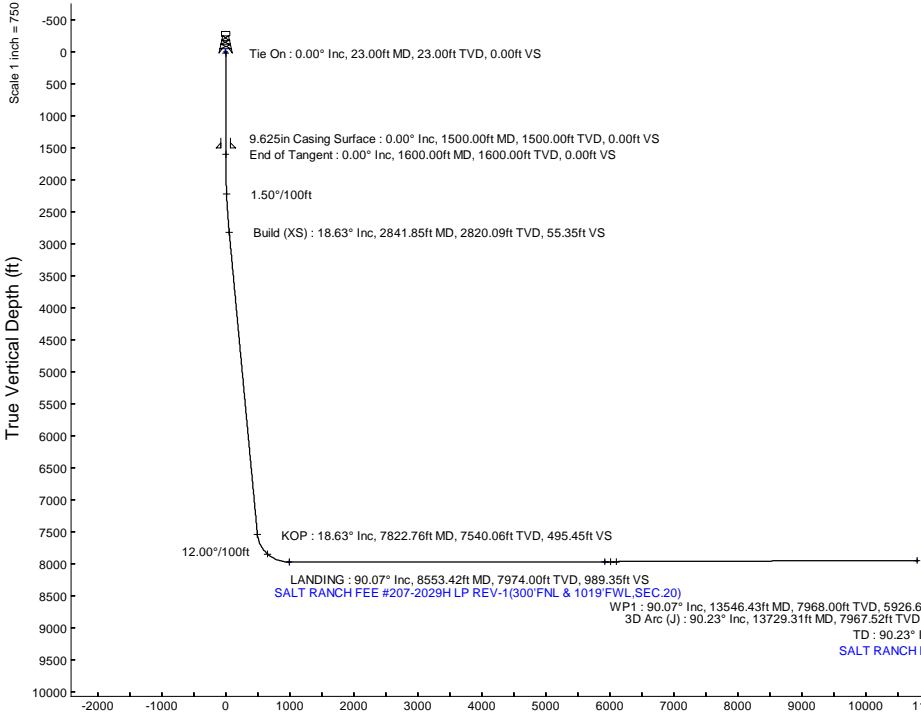
3D Arc (J) : 7967.52ft TVD, 5793.63ft S, 2180.94ft E

TD : 7948.00ft TVD, 10595.00ft S, 2093.18ft E

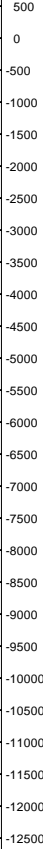
SALT RANCH FEE #207-2029H BHL REV-1(300°FNL & 1019°FWL, SEC.20)

Scale 1 inch = 750

True Vertical Depth (ft)



Nothing (ft)



BODM (1980.0 to 2023.0) Dr: 67.07° Field: 52291.6 ± 0.7
Magnetic North is 7.36 degrees East of True North (at 1/25/2022)

To correct azimuth from Magnetic to True add 7.36 degrees

Scale 1 inch = 750



Planned Wellpath Report

SALT RANCH FEE #207-2029H PWP Rev-A.0
Page 1 of 8



REFERENCE WELLPATH IDENTIFICATION			
Operator	UPLAND EXPLORATION	Well	SALT RANCH FEE #207-2029H
Field	WELD COUNTY (TRUE NORTH NAD 83)	API/Legal	
Facility	SEC.18-T11N-R64W	Wellbore	SALT RANCH FEE #207-2029H PWB
Slot	SLOT#02 SALT RANCH FEE #207-2029H (331'FSL & 938'FEL,SEC.18)		

REPORT SETUP INFORMATION			
Projection System	NAD83 / Lambert Colorado SP, Northern Zone (501), US feet	Software System	WellArchitect® 6.0
North Reference	True	User	Painsetr
Scale	1.000024	Report Generated	1/20/2022 at 1:45:38 PM
Convergence at slot	0.59° East	Database	WellArchitectDB

WELLPATH LOCATION						
	Local coordinates		Grid coordinates		Geographic coordinates	
	North[ft]	East[ft]	Easting[US ft]	Northing[US ft]	Latitude	Longitude
Slot Location	0.00	16.58	3253169.11	1577319.09	40.9145200°	-104.5840200°
Facility Reference Pt			3253152.53	1577318.92	40.9145200°	-104.5840800°
Field Reference Pt			3264604.58	1572171.06	40.9000600°	-104.5428500°

WELLPATH DATUM			
Calculation method	Minimum curvature	Rig (23') (KB) to Facility Vertical Datum	5626.00ft
Horizontal Reference Pt	Slot	Rig (23') (KB) to Mean Sea Level	5626.00ft
Vertical Reference Pt	Rig (23') (KB)	Rig (23') (KB) to Ground Level at Slot (SLOT#02 SALT RANCH FEE #207-2029H (331'FSL & 938'FEL,SEC.18))	5626.00ft
MD Reference Pt	Rig (23') (KB)	Section Origin	N 0.00, E 0.00 ft
Field Vertical Reference	Mean Sea Level	Section Azimuth	168.82°



Planned Wellpath Report

SALT RANCH FEE #207-2029H PWP Rev-A.0
Page 2 of 8



REFERENCE WELLPATH IDENTIFICATION

Operator	UPLAND EXPLORATION	Well	SALT RANCH FEE #207-2029H
Field	WELD COUNTY (TRUE NORTH NAD 83)	API/Legal	
Facility	SEC.18-T11N-R64W	Wellbore	SALT RANCH FEE #207-2029H PWB
Slot	SLOT#02 SALT RANCH FEE #207-2029H (331'FSL & 938'FEL,SEC.18)		

WELLPATH DATA (202 stations) † = interpolated, ‡ = extrapolated station

MD [ft]	Inclination [°]	Azimuth [°]	TVD [ft]	Vert Sect [ft]	North [ft]	East [ft]	Grid East [US ft]	Grid North [US ft]	Latitude	Longitude	DLS [°/100ft]	Comments
0.00†	0.000	94.883	0.00	0.00	0.00	0.00	3253169.11	1577319.09	40.9145200	-104.5840200	0.00	
23.00	0.000	94.883	23.00	0.00	0.00	0.00	3253169.11	1577319.09	40.9145200	-104.5840200	0.00	Tie On
123.00†	0.000	94.883	123.00	0.00	0.00	0.00	3253169.11	1577319.09	40.9145200	-104.5840200	0.00	
223.00†	0.000	94.883	223.00	0.00	0.00	0.00	3253169.11	1577319.09	40.9145200	-104.5840200	0.00	
250.00†	0.000	94.883	250.00	0.00	0.00	0.00	3253169.11	1577319.09	40.9145200	-104.5840200	0.00	Aquifer
323.00†	0.000	94.883	323.00	0.00	0.00	0.00	3253169.11	1577319.09	40.9145200	-104.5840200	0.00	
423.00†	0.000	94.883	423.00	0.00	0.00	0.00	3253169.11	1577319.09	40.9145200	-104.5840200	0.00	
523.00†	0.000	94.883	523.00	0.00	0.00	0.00	3253169.11	1577319.09	40.9145200	-104.5840200	0.00	
623.00†	0.000	94.883	623.00	0.00	0.00	0.00	3253169.11	1577319.09	40.9145200	-104.5840200	0.00	
723.00†	0.000	94.883	723.00	0.00	0.00	0.00	3253169.11	1577319.09	40.9145200	-104.5840200	0.00	
823.00†	0.000	94.883	823.00	0.00	0.00	0.00	3253169.11	1577319.09	40.9145200	-104.5840200	0.00	
923.00†	0.000	94.883	923.00	0.00	0.00	0.00	3253169.11	1577319.09	40.9145200	-104.5840200	0.00	
1023.00†	0.000	94.883	1023.00	0.00	0.00	0.00	3253169.11	1577319.09	40.9145200	-104.5840200	0.00	
1123.00†	0.000	94.883	1123.00	0.00	0.00	0.00	3253169.11	1577319.09	40.9145200	-104.5840200	0.00	
1223.00†	0.000	94.883	1223.00	0.00	0.00	0.00	3253169.11	1577319.09	40.9145200	-104.5840200	0.00	
1323.00†	0.000	94.883	1323.00	0.00	0.00	0.00	3253169.11	1577319.09	40.9145200	-104.5840200	0.00	
1423.00†	0.000	94.883	1423.00	0.00	0.00	0.00	3253169.11	1577319.09	40.9145200	-104.5840200	0.00	
1523.00†	0.000	94.883	1523.00	0.00	0.00	0.00	3253169.11	1577319.09	40.9145200	-104.5840200	0.00	
1600.00	0.000	94.883	1600.00	0.00	0.00	0.00	3253169.11	1577319.09	40.9145200	-104.5840200	0.00	End of Tangent
1623.00†	0.345	94.883	1623.00	0.02	-0.01	0.07	3253169.18	1577319.09	40.9145200	-104.5840198	1.50	
1723.00†	1.845	94.883	1722.98	0.55	-0.17	1.97	3253171.08	1577318.94	40.9145195	-104.5840129	1.50	
1750.04†	2.251	94.883	1750.00	0.82	-0.25	2.94	3253172.05	1577318.87	40.9145193	-104.5840094	1.50	Pierre Sh
1823.00†	3.345	94.883	1822.87	1.80	-0.55	6.48	3253175.60	1577318.60	40.9145185	-104.5839965	1.50	
1923.00†	4.845	94.883	1922.62	3.78	-1.16	13.60	3253182.72	1577318.07	40.9145168	-104.5839708	1.50	
2023.00†	6.345	94.883	2022.14	6.47	-1.99	23.31	3253192.44	1577317.34	40.9145145	-104.5839357	1.50	
2123.00†	7.845	94.883	2121.37	9.89	-3.04	35.62	3253204.76	1577316.42	40.9145116	-104.5838911	1.50	
2223.00†	9.345	94.883	2220.24	14.02	-4.31	50.51	3253219.66	1577315.30	40.9145082	-104.5838373	1.50	
2323.00†	10.845	94.883	2318.69	18.87	-5.81	67.97	3253237.14	1577313.99	40.9145041	-104.5837741	1.50	
2423.00†	12.345	94.883	2416.65	24.43	-7.52	88.00	3253257.18	1577312.48	40.9144994	-104.5837016	1.50	
2523.00†	13.845	94.883	2514.04	30.70	-9.45	110.57	3253279.78	1577310.79	40.9144941	-104.5836199	1.50	
2623.00†	15.345	94.883	2610.81	37.67	-11.59	135.68	3253304.90	1577308.90	40.9144882	-104.5835291	1.50	
2723.00†	16.845	94.883	2706.89	45.34	-13.95	163.30	3253332.55	1577306.83	40.9144817	-104.5834292	1.50	
2823.00†	18.345	94.883	2802.21	53.70	-16.52	193.42	3253362.69	1577304.57	40.9144746	-104.5833202	1.50	
2841.85	18.628	94.883	2820.09	55.35	-17.03	199.37	3253368.65	1577304.12	40.9144733	-104.5832987	1.50	Build (XS)
2923.00†	18.628	94.883	2896.99	62.52	-19.24	225.20	3253394.50	1577302.18	40.9144672	-104.5832052	0.00	
2926.18†	18.628	94.883	2900.00	62.80	-19.33	226.21	3253395.51	1577302.10	40.9144670	-104.5832015	0.00	Hygiene
3023.00†	18.628	94.883	2991.75	71.36	-21.96	257.03	3253426.35	1577299.79	40.9144597	-104.5830901	0.00	
3123.00†	18.628	94.883	3086.51	80.19	-24.68	288.85	3253458.21	1577297.40	40.9144523	-104.5829749	0.00	
3223.00†	18.628	94.883	3181.27	89.03	-27.40	320.68	3253490.06	1577295.01	40.9144448	-104.5828598	0.00	
3323.00†	18.628	94.883	3276.03	97.86	-30.11	352.50	3253521.91	1577292.62	40.9144373	-104.5827446	0.00	
3423.00†	18.628	94.883	3370.79	106.70	-32.83	384.33	3253553.77	1577290.23	40.9144299	-104.5826295	0.00	
3523.00†	18.628	94.883	3465.56	115.54	-35.55	416.16	3253585.62	1577287.84	40.9144224	-104.5825143	0.00	
3527.69†	18.628	94.883	3470.00	115.95	-35.68	417.65	3253587.11	1577287.73	40.9144221	-104.5825089	0.00	Sussex
3623.00†	18.628	94.883	3560.32	124.37	-38.27	447.98	3253617.47	1577285.45	40.9144149	-104.5823992	0.00	
3723.00†	18.628	94.883	3655.08	133.21	-40.99	479.81	3253649.33	1577283.06	40.9144075	-104.5822840	0.00	



Planned Wellpath Report

SALT RANCH FEE #207-2029H PWP Rev-A.0
Page 3 of 8



REFERENCE WELLPATH IDENTIFICATION			
Operator	UPLAND EXPLORATION	Well	SALT RANCH FEE #207-2029H
Field	WELD COUNTY (TRUE NORTH NAD 83)	API/Legal	
Facility	SEC.18-T11N-R64W	Wellbore	SALT RANCH FEE #207-2029H PWB
Slot	SLOT#02 SALT RANCH FEE #207-2029H (331'FSL & 938'FEL,SEC.18)		

WELLPATH DATA (202 stations) † = interpolated, ‡ = extrapolated station												
MD [ft]	Inclination [°]	Azimuth [°]	TVD [ft]	Vert Sect [ft]	North [ft]	East [ft]	Grid East [US ft]	Grid North [US ft]	Latitude	Longitude	DLS [°/100ft]	Comments
3823.00†	18.628	94.883	3749.84	142.04	-43.71	511.63	3253681.18	1577280.67	40.9144000	-104.5821689	0.00	
3923.00†	18.628	94.883	3844.60	150.88	-46.43	543.46	3253713.03	1577278.28	40.9143926	-104.5820537	0.00	
4023.00†	18.628	94.883	3939.36	159.71	-49.15	575.29	3253744.88	1577275.89	40.9143851	-104.5819386	0.00	
4123.00†	18.628	94.883	4034.12	168.55	-51.86	607.11	3253776.74	1577273.50	40.9143776	-104.5818234	0.00	
4223.00†	18.628	94.883	4128.89	177.39	-54.58	638.94	3253808.59	1577271.11	40.9143702	-104.5817083	0.00	
4323.00†	18.628	94.883	4223.65	186.22	-57.30	670.76	3253840.44	1577268.72	40.9143627	-104.5815931	0.00	
4423.00†	18.628	94.883	4318.41	195.06	-60.02	702.59	3253872.30	1577266.33	40.9143552	-104.5814780	0.00	
4523.00†	18.628	94.883	4413.17	203.89	-62.74	734.41	3253904.15	1577263.94	40.9143478	-104.5813628	0.00	
4551.31†	18.628	94.883	4440.00	206.39	-63.51	743.43	3253913.17	1577263.26	40.9143457	-104.5813302	0.00	Shannon
4623.00†	18.628	94.883	4507.93	212.73	-65.46	766.24	3253936.00	1577261.55	40.9143403	-104.5812477	0.00	
4723.00†	18.628	94.883	4602.69	221.56	-68.18	798.07	3253967.85	1577259.16	40.9143328	-104.5811325	0.00	
4823.00†	18.628	94.883	4697.45	230.40	-70.90	829.89	3253999.71	1577256.77	40.9143254	-104.5810174	0.00	
4923.00†	18.628	94.883	4792.22	239.23	-73.62	861.72	3254031.56	1577254.38	40.9143179	-104.5809023	0.00	
5023.00†	18.628	94.883	4886.98	248.07	-76.33	893.54	3254063.41	1577251.99	40.9143104	-104.5807871	0.00	
5123.00†	18.628	94.883	4981.74	256.91	-79.05	925.37	3254095.27	1577249.60	40.9143030	-104.5806720	0.00	
5223.00†	18.628	94.883	5076.50	265.74	-81.77	957.20	3254127.12	1577247.21	40.9142955	-104.5805568	0.00	
5323.00†	18.628	94.883	5171.26	274.58	-84.49	989.02	3254158.97	1577244.82	40.9142880	-104.5804417	0.00	
5423.00†	18.628	94.883	5266.02	283.41	-87.21	1020.85	3254190.82	1577242.43	40.9142806	-104.5803265	0.00	
5523.00†	18.628	94.883	5360.78	292.25	-89.93	1052.67	3254222.68	1577240.04	40.9142731	-104.5802114	0.00	
5623.00†	18.628	94.883	5455.54	301.08	-92.65	1084.50	3254254.53	1577237.65	40.9142656	-104.5800962	0.00	
5723.00†	18.628	94.883	5550.31	309.92	-95.37	1116.32	3254286.38	1577235.26	40.9142582	-104.5799811	0.00	
5823.00†	18.628	94.883	5645.07	318.76	-98.08	1148.15	3254318.24	1577232.87	40.9142507	-104.5798659	0.00	
5923.00†	18.628	94.883	5739.83	327.59	-100.80	1179.98	3254350.09	1577230.48	40.9142433	-104.5797508	0.00	
6023.00†	18.628	94.883	5834.59	336.43	-103.52	1211.80	3254381.94	1577228.09	40.9142358	-104.5796356	0.00	
6123.00†	18.628	94.883	5929.35	345.26	-106.24	1243.63	3254413.80	1577225.70	40.9142283	-104.5795205	0.00	
6223.00†	18.628	94.883	6024.11	354.10	-108.96	1275.45	3254445.65	1577223.31	40.9142209	-104.5794053	0.00	
6323.00†	18.628	94.883	6118.87	362.93	-111.68	1307.28	3254477.50	1577220.92	40.9142134	-104.5792902	0.00	
6423.00†	18.628	94.883	6213.64	371.77	-114.40	1339.11	3254509.35	1577218.53	40.9142059	-104.5791750	0.00	
6523.00†	18.628	94.883	6308.40	380.61	-117.12	1370.93	3254541.21	1577216.14	40.9141984	-104.5790599	0.00	
6623.00†	18.628	94.883	6403.16	389.44	-119.84	1402.76	3254573.06	1577213.75	40.9141910	-104.5789448	0.00	
6723.00†	18.628	94.883	6497.92	398.28	-122.55	1434.58	3254604.91	1577211.36	40.9141835	-104.5788296	0.00	
6823.00†	18.628	94.883	6592.68	407.11	-125.27	1466.41	3254636.77	1577208.97	40.9141760	-104.5787145	0.00	
6923.00†	18.628	94.883	6687.44	415.95	-127.99	1498.23	3254668.62	1577206.58	40.9141686	-104.5785993	0.00	
7023.00†	18.628	94.883	6782.20	424.78	-130.71	1530.06	3254700.47	1577204.19	40.9141611	-104.5784842	0.00	
7123.00†	18.628	94.883	6876.97	433.62	-133.43	1561.89	3254732.32	1577201.80	40.9141536	-104.5783690	0.00	
7223.00†	18.628	94.883	6971.73	442.45	-136.15	1593.71	3254764.18	1577199.41	40.9141462	-104.5782539	0.00	
7323.00†	18.628	94.883	7066.49	451.29	-138.87	1625.54	3254796.03	1577197.02	40.9141387	-104.5781387	0.00	
7423.00†	18.628	94.883	7161.25	460.13	-141.59	1657.36	3254827.88	1577194.63	40.9141312	-104.5780236	0.00	
7523.00†	18.628	94.883	7256.01	468.96	-144.31	1689.19	3254859.74	1577192.24	40.9141238	-104.5779084	0.00	
7623.00†	18.628	94.883	7350.77	477.80	-147.02	1721.02	3254891.59	1577189.85	40.9141163	-104.5777933	0.00	
7723.00†	18.628	94.883	7445.53	486.63	-149.74	1752.84	3254923.44	1577187.46	40.9141088	-104.5776781	0.00	
7822.76	18.628	94.883	7540.06	495.45	-152.45	1784.59	3254955.22	1577185.08	40.9141014	-104.5775633	0.00	KOP
7823.00†	18.631	94.974	7540.30	495.47	-152.46	1784.67	3254955.29	1577185.07	40.9141014	-104.5775630	12.00	
7923.00†	23.285	126.427	7633.95	514.58	-165.63	1816.60	3254987.36	1577172.23	40.9140652	-104.5774475	12.00	
8023.00†	31.858	144.838	7722.67	553.43	-199.06	1847.82	3255018.92	1577139.12	40.9139734	-104.5773345	12.00	



Planned Wellpath Report

SALT RANCH FEE #207-2029H PWP Rev-A.0
Page 4 of 8



REFERENCE WELLPATH IDENTIFICATION

Operator	UPLAND EXPLORATION	Well	SALT RANCH FEE #207-2029H
Field	WELD COUNTY (TRUE NORTH NAD 83)	API/Legal	
Facility	SEC.18-T11N-R64W	Wellbore	SALT RANCH FEE #207-2029H PWB
Slot	SLOT#02 SALT RANCH FEE #207-2029H (331'FSL & 938'FEL,SEC.18)		

WELLPATH DATA (202 stations) † = interpolated, ‡ = extrapolated station

MD [ft]	Inclination [°]	Azimuth [°]	TVD [ft]	Vert Sect [ft]	North [ft]	East [ft]	Grid East [US ft]	Grid North [US ft]	Latitude	Longitude	DLS [°/100ft]	Comments
8123.00†	42.008	155.590	7802.58	610.32	-251.30	1876.95	3255048.60	1577087.19	40.9138301	-104.5772291	12.00	
8169.88†	47.023	159.228	7836.00	642.52	-281.64	1889.52	3255061.48	1577056.97	40.9137468	-104.5771836	12.00	Sharon Springs
8223.00†	52.824	162.689	7870.19	682.77	-320.06	1902.73	3255075.08	1577018.70	40.9136413	-104.5771359	12.00	
8241.31†	54.845	163.758	7881.00	697.48	-334.21	1906.99	3255079.49	1577004.59	40.9136025	-104.5771205	12.00	Fort Hays
8308.50†	62.328	167.278	7916.00	754.67	-389.69	1921.25	3255094.32	1576949.26	40.9134502	-104.5770689	12.00	Niobrara
8323.00†	63.955	167.971	7922.55	767.61	-402.33	1924.02	3255097.23	1576936.65	40.9134155	-104.5770589	12.00	
8423.00†	75.245	172.321	7957.37	861.13	-494.52	1939.90	3255114.06	1576844.62	40.9131625	-104.5770014	12.00	
8523.00†	86.607	176.235	7973.12	959.24	-592.60	1949.68	3255124.85	1576746.65	40.9128933	-104.5769661	12.00	
8553.42	90.069	177.393	7974.00†	989.35	-622.95	1951.37	3255126.85	1576716.32	40.9128100	-104.5769600	12.00	LANDING
8623.00†	90.069	177.393	7973.92	1058.15	-692.46	1954.53	3255130.73	1576646.84	40.9126192	-104.5769486	0.00	
8723.00†	90.069	177.393	7973.80	1157.04	-792.36	1959.08	3255136.31	1576546.99	40.9123450	-104.5769321	0.00	
8823.00†	90.069	177.393	7973.68	1255.92	-892.26	1963.63	3255141.89	1576447.15	40.9120708	-104.5769157	0.00	
8923.00†	90.069	177.393	7973.56	1354.81	-992.15	1968.17	3255147.47	1576347.30	40.9117967	-104.5768993	0.00	
9023.00†	90.069	177.393	7973.44	1453.69	-1092.05	1972.72	3255153.05	1576247.45	40.9115225	-104.5768829	0.00	
9123.00†	90.069	177.393	7973.32	1552.57	-1191.95	1977.27	3255158.63	1576147.61	40.9112483	-104.5768664	0.00	
9223.00†	90.069	177.393	7973.20	1651.46	-1291.84	1981.82	3255164.21	1576047.76	40.9109741	-104.5768500	0.00	
9323.00†	90.069	177.393	7973.08	1750.34	-1391.74	1986.37	3255169.79	1575947.91	40.9106999	-104.5768336	0.00	
9423.00†	90.069	177.393	7972.96	1849.22	-1491.64	1990.92	3255175.37	1575848.07	40.9104258	-104.5768172	0.00	
9523.00†	90.069	177.393	7972.83	1948.11	-1591.53	1995.46	3255180.95	1575748.22	40.9101516	-104.5768007	0.00	
9623.00†	90.069	177.393	7972.71	2046.99	-1691.43	2000.01	3255186.53	1575648.38	40.9098774	-104.5767843	0.00	
9723.00†	90.069	177.393	7972.59	2145.87	-1791.33	2004.56	3255192.11	1575548.53	40.9096032	-104.5767679	0.00	
9823.00†	90.069	177.393	7972.47	2244.76	-1891.22	2009.11	3255197.69	1575448.68	40.9093290	-104.5767515	0.00	
9923.00†	90.069	177.393	7972.35	2343.64	-1991.12	2013.66	3255203.27	1575348.84	40.9090548	-104.5767350	0.00	
10023.00†	90.069	177.393	7972.23	2442.53	-2091.01	2018.20	3255208.85	1575248.99	40.9087807	-104.5767186	0.00	
10123.00†	90.069	177.393	7972.11	2541.41	-2190.91	2022.75	3255214.43	1575149.14	40.9085065	-104.5767022	0.00	
10223.00†	90.069	177.393	7971.99	2640.29	-2290.81	2027.30	3255220.01	1575049.30	40.9082323	-104.5766858	0.00	
10323.00†	90.069	177.393	7971.87	2739.18	-2390.70	2031.85	3255225.59	1574949.45	40.9079581	-104.5766693	0.00	
10423.00†	90.069	177.393	7971.75	2838.06	-2490.60	2036.40	3255231.17	1574849.60	40.9076839	-104.5766529	0.00	
10523.00†	90.069	177.393	7971.63	2936.94	-2590.50	2040.95	3255236.75	1574749.76	40.9074097	-104.5766365	0.00	
10623.00†	90.069	177.393	7971.51	3035.83	-2690.39	2045.49	3255242.33	1574649.91	40.9071356	-104.5766201	0.00	
10723.00†	90.069	177.393	7971.39	3134.71	-2790.29	2050.04	3255247.91	1574550.07	40.9068614	-104.5766036	0.00	
10823.00†	90.069	177.393	7971.27	3233.60	-2890.19	2054.59	3255253.49	1574450.22	40.9065872	-104.5765872	0.00	
10923.00†	90.069	177.393	7971.15	3332.48	-2990.08	2059.14	3255259.07	1574350.37	40.9063130	-104.5765708	0.00	
11023.00†	90.069	177.393	7971.03	3431.36	-3089.98	2063.69	3255264.65	1574250.53	40.9060388	-104.5765544	0.00	
11123.00†	90.069	177.393	7970.91	3530.25	-3189.88	2068.23	3255270.23	1574150.68	40.9057646	-104.5765380	0.00	
11223.00†	90.069	177.393	7970.79	3629.13	-3289.77	2072.78	3255275.81	1574050.83	40.9054905	-104.5765215	0.00	
11323.00†	90.069	177.393	7970.67	3728.01	-3389.67	2077.33	3255281.39	1573950.99	40.9052163	-104.5765051	0.00	
11423.00†	90.069	177.393	7970.55	3826.90	-3489.56	2081.88	3255286.97	1573851.14	40.9049421	-104.5764887	0.00	
11523.00†	90.069	177.393	7970.43	3925.78	-3589.46	2086.43	3255292.55	1573751.29	40.9046679	-104.5764723	0.00	
11623.00†	90.069	177.393	7970.31	4024.66	-3689.36	2090.97	3255298.13	1573651.45	40.9043937	-104.5764558	0.00	
11723.00†	90.069	177.393	7970.19	4123.55	-3789.25	2095.52	3255303.71	1573551.60	40.9041195	-104.5764394	0.00	
11823.00†	90.069	177.393	7970.07	4222.43	-3889.15	2100.07	3255309.29	1573451.76	40.9038454	-104.5764230	0.00	
11923.00†	90.069	177.393	7969.95	4321.32	-3989.05	2104.62	3255314.87	1573351.91	40.9035712	-104.5764066	0.00	
12023.00†	90.069	177.393	7969.83	4420.20	-4088.94	2109.17	3255320.45	1573252.06	40.9032970	-104.5763902	0.00	
12123.00†	90.069	177.393	7969.71	4519.08	-4188.84	2113.72	3255326.03	1573152.22	40.9030228	-104.5763737	0.00	



Planned Wellpath Report

SALT RANCH FEE #207-2029H PWP Rev-A.0
Page 5 of 8



REFERENCE WELLPATH IDENTIFICATION

Operator	UPLAND EXPLORATION	Well	SALT RANCH FEE #207-2029H
Field	WELD COUNTY (TRUE NORTH NAD 83)	API/Legal	
Facility	SEC.18-T11N-R64W	Wellbore	SALT RANCH FEE #207-2029H PWB
Slot	SLOT#02 SALT RANCH FEE #207-2029H (331'FSL & 938'FEL,SEC.18)		

WELLPATH DATA (202 stations) † = interpolated, ‡ = extrapolated station

MD [ft]	Inclination [°]	Azimuth [°]	TVD [ft]	Vert Sect [ft]	North [ft]	East [ft]	Grid East [US ft]	Grid North [US ft]	Latitude	Longitude	DLS [°/100ft]	Comments
12223.00†	90.069	177.393	7969.59	4617.97	-4288.74	2118.26	3255331.61	1573052.37	40.9027486	-104.5763573	0.00	
12323.00†	90.069	177.393	7969.47	4716.85	-4388.63	2122.81	3255337.19	1572952.52	40.9024744	-104.5763409	0.00	
12423.00†	90.069	177.393	7969.35	4815.73	-4488.53	2127.36	3255342.77	1572852.68	40.9022003	-104.5763245	0.00	
12523.00†	90.069	177.393	7969.23	4914.62	-4588.43	2131.91	3255348.35	1572752.83	40.9019261	-104.5763081	0.00	
12623.00†	90.069	177.393	7969.11	5013.50	-4688.32	2136.46	3255353.93	1572652.99	40.9016519	-104.5762916	0.00	
12723.00†	90.069	177.393	7968.99	5112.39	-4788.22	2141.00	3255359.51	1572553.14	40.9013777	-104.5762752	0.00	
12823.00†	90.069	177.393	7968.87	5211.27	-4888.11	2145.55	3255365.09	1572453.29	40.9011035	-104.5762588	0.00	
12923.00†	90.069	177.393	7968.75	5310.15	-4988.01	2150.10	3255370.67	1572353.45	40.9008293	-104.5762424	0.00	
13023.00†	90.069	177.393	7968.63	5409.04	-5087.91	2154.65	3255376.25	1572253.60	40.9005552	-104.5762259	0.00	
13123.00†	90.069	177.393	7968.51	5507.92	-5187.80	2159.20	3255381.83	1572153.75	40.9002810	-104.5762095	0.00	
13223.00†	90.069	177.393	7968.39	5606.80	-5287.70	2163.74	3255387.41	1572053.91	40.9000068	-104.5761931	0.00	
13323.00†	90.069	177.393	7968.27	5705.69	-5387.60	2168.29	3255392.99	1571954.06	40.8997326	-104.5761767	0.00	
13423.00†	90.069	177.393	7968.15	5804.57	-5487.49	2172.84	3255398.57	1571854.21	40.8994584	-104.5761603	0.00	
13523.00†	90.069	177.393	7968.03	5903.46	-5587.39	2177.39	3255404.15	1571754.37	40.8991842	-104.5761438	0.00	
13546.43	90.069	177.393	7968.00‡	5926.62	-5610.79	2178.45	3255405.45	1571730.98	40.8991200	-104.5761400	0.00	WP1
13623.00†	90.138	178.923	7967.86	6002.18	-5687.32	2180.92	3255408.70	1571654.47	40.8989100	-104.5761311	2.00	
13723.00†	90.227	180.921	7967.54	6100.30	-5787.32	2181.05	3255409.87	1571554.48	40.8986355	-104.5761307	2.00	
13729.31	90.233	181.047	7967.52	6106.47	-5793.63	2180.94	3255409.83	1571548.17	40.8986182	-104.5761311	2.00	3D Arc (J)
13823.00†	90.233	181.047	7967.14	6198.04	-5887.30	2179.23	3255409.09	1571454.49	40.8983611	-104.5761373	0.00	
13923.00†	90.233	181.047	7966.73	6295.77	-5987.28	2177.40	3255408.29	1571354.49	40.8980867	-104.5761439	0.00	
14023.00†	90.233	181.047	7966.32	6393.50	-6087.27	2175.58	3255407.50	1571254.49	40.8978122	-104.5761506	0.00	
14123.00†	90.233	181.047	7965.92	6491.23	-6187.25	2173.75	3255406.70	1571154.49	40.8975378	-104.5761572	0.00	
14223.00†	90.233	181.047	7965.51	6588.97	-6287.23	2171.92	3255405.91	1571054.49	40.8972634	-104.5761639	0.00	
14323.00†	90.233	181.047	7965.11	6686.70	-6387.21	2170.09	3255405.11	1570954.50	40.8969890	-104.5761705	0.00	
14423.00†	90.233	181.047	7964.70	6784.43	-6487.20	2168.27	3255404.32	1570854.50	40.8967146	-104.5761771	0.00	
14523.00†	90.233	181.047	7964.29	6882.16	-6587.18	2166.44	3255403.52	1570754.50	40.8964402	-104.5761838	0.00	
14623.00†	90.233	181.047	7963.89	6979.89	-6687.16	2164.61	3255402.73	1570654.50	40.8961657	-104.5761904	0.00	
14723.00†	90.233	181.047	7963.48	7077.63	-6787.14	2162.78	3255401.93	1570554.50	40.8958913	-104.5761971	0.00	
14823.00†	90.233	181.047	7963.07	7175.36	-6887.13	2160.96	3255401.14	1570454.50	40.8956169	-104.5762037	0.00	
14923.00†	90.233	181.047	7962.67	7273.09	-6987.11	2159.13	3255400.34	1570354.51	40.8953425	-104.5762103	0.00	
15023.00†	90.233	181.047	7962.26	7370.82	-7087.09	2157.30	3255399.55	1570254.51	40.8950681	-104.5762170	0.00	
15123.00†	90.233	181.047	7961.85	7468.56	-7187.07	2155.47	3255398.75	1570154.51	40.8947936	-104.5762236	0.00	
15223.00†	90.233	181.047	7961.45	7566.29	-7287.06	2153.65	3255397.96	1570054.51	40.8945192	-104.5762303	0.00	
15323.00†	90.233	181.047	7961.04	7664.02	-7387.04	2151.82	3255397.16	1569954.51	40.8942448	-104.5762369	0.00	
15423.00†	90.233	181.047	7960.63	7761.75	-7487.02	2149.99	3255396.37	1569854.51	40.8939704	-104.5762436	0.00	
15523.00†	90.233	181.047	7960.23	7859.49	-7587.00	2148.16	3255395.58	1569754.52	40.8936960	-104.5762502	0.00	
15623.00†	90.233	181.047	7959.82	7957.22	-7686.99	2146.33	3255394.78	1569654.52	40.8934215	-104.5762568	0.00	
15723.00†	90.233	181.047	7959.42	8054.95	-7786.97	2144.51	3255393.99	1569554.52	40.8931471	-104.5762635	0.00	
15823.00†	90.233	181.047	7959.01	8152.68	-7886.95	2142.68	3255393.19	1569454.52	40.8928727	-104.5762701	0.00	
15923.00†	90.233	181.047	7958.60	8250.42	-7986.93	2140.85	3255392.40	1569354.52	40.8925983	-104.5762768	0.00	
16023.00†	90.233	181.047	7958.20	8348.15	-8086.92	2139.02	3255391.60	1569254.53	40.8923239	-104.5762834	0.00	
16123.00†	90.233	181.047	7957.79	8445.88	-8186.90	2137.20	3255390.81	1569154.53	40.8920494	-104.5762901	0.00	
16223.00†	90.233	181.047	7957.38	8543.61	-8286.88	2135.37	3255390.01	1569054.53	40.8917750	-104.5762967	0.00	
16323.00†	90.233	181.047	7956.98	8641.34	-8386.86	2133.54	3255389.22	1568954.53	40.8915006	-104.5763033	0.00	
16423.00†	90.233	181.047	7956.57	8739.08	-8486.84	2131.71	3255388.42	1568854.53	40.8912262	-104.5763100	0.00	



Planned Wellpath Report

SALT RANCH FEE #207-2029H PWP Rev-A.0
Page 6 of 8



REFERENCE WELLPATH IDENTIFICATION

Operator	UPLAND EXPLORATION	Well	SALT RANCH FEE #207-2029H
Field	WELD COUNTY (TRUE NORTH NAD 83)	API/Legal	
Facility	SEC.18-T11N-R64W	Wellbore	SALT RANCH FEE #207-2029H PWB
Slot	SLOT#02 SALT RANCH FEE #207-2029H (331'FSL & 938'FEL,SEC.18)		

WELLPATH DATA (202 stations) † = interpolated, ‡ = extrapolated station

MD [ft]	Inclination [°]	Azimuth [°]	TVD [ft]	Vert Sect [ft]	North [ft]	East [ft]	Grid East [US ft]	Grid North [US ft]	Latitude	Longitude	DLS [°/100ft]	Comments
16523.00†	90.233	181.047	7956.16	8836.81	-8586.83	2129.89	3255387.63	1568754.53	40.8909518	-104.5763166	0.00	
16623.00†	90.233	181.047	7955.76	8934.54	-8686.81	2128.06	3255386.83	1568654.54	40.8906774	-104.5763233	0.00	
16723.00†	90.233	181.047	7955.35	9032.27	-8786.79	2126.23	3255386.04	1568554.54	40.8904029	-104.5763299	0.00	
16823.00†	90.233	181.047	7954.94	9130.01	-8886.77	2124.40	3255385.24	1568454.54	40.8901285	-104.5763365	0.00	
16923.00†	90.233	181.047	7954.54	9227.74	-8986.76	2122.58	3255384.45	1568354.54	40.8898541	-104.5763432	0.00	
17023.00†	90.233	181.047	7954.13	9325.47	-9086.74	2120.75	3255383.65	1568254.54	40.8895797	-104.5763498	0.00	
17123.00†	90.233	181.047	7953.72	9423.20	-9186.72	2118.92	3255382.86	1568154.55	40.8893053	-104.5763565	0.00	
17223.00†	90.233	181.047	7953.32	9520.94	-9286.70	2117.09	3255382.07	1568054.55	40.8890308	-104.5763631	0.00	
17323.00†	90.233	181.047	7952.91	9618.67	-9386.69	2115.27	3255381.27	1567954.55	40.8887564	-104.5763697	0.00	
17423.00†	90.233	181.047	7952.51	9716.40	-9486.67	2113.44	3255380.48	1567854.55	40.8884820	-104.5763764	0.00	
17523.00†	90.233	181.047	7952.10	9814.13	-9586.65	2111.61	3255379.68	1567754.55	40.8882076	-104.5763830	0.00	
17623.00†	90.233	181.047	7951.69	9911.87	-9686.63	2109.78	3255378.89	1567654.55	40.8879332	-104.5763897	0.00	
17723.00†	90.233	181.047	7951.29	10009.60	-9786.62	2107.96	3255378.09	1567554.56	40.8876587	-104.5763963	0.00	
17823.00†	90.233	181.047	7950.88	10107.33	-9886.60	2106.13	3255377.30	1567454.56	40.8873843	-104.5764030	0.00	
17923.00†	90.233	181.047	7950.47	10205.06	-9986.58	2104.30	3255376.50	1567354.56	40.8871099	-104.5764096	0.00	
18023.00†	90.233	181.047	7950.07	10302.80	-10086.56	2102.47	3255375.71	1567254.56	40.8868355	-104.5764162	0.00	
18123.00†	90.233	181.047	7949.66	10400.53	-10186.55	2100.65	3255374.91	1567154.56	40.8865611	-104.5764229	0.00	
18223.00†	90.233	181.047	7949.25	10498.26	-10286.53	2098.82	3255374.12	1567054.56	40.8862866	-104.5764295	0.00	
18323.00†	90.233	181.047	7948.85	10595.99	-10386.51	2096.99	3255373.32	1566954.57	40.8860122	-104.5764362	0.00	
18423.00†	90.233	181.047	7948.44	10693.72	-10486.49	2095.16	3255372.53	1566854.57	40.8857378	-104.5764428	0.00	
18523.00†	90.233	181.047	7948.03	10791.46	-10586.48	2093.34	3255371.73	1566754.57	40.8854634	-104.5764494	0.00	
18531.52	90.233	181.047	7948.00‡	10799.78	-10595.00	2093.18	3255371.67	1566746.05	40.8854400	-104.5764500	0.00	TD

HOLE & CASING SECTIONS

- Ref Wellbore: SALT RANCH FEE #207-2029H PWB Ref Wellpath: SALT RANCH FEE #207-2029H PWP Rev-A.0

String/Diameter	Start MD [ft]	End MD [ft]	Interval [ft]	Start TVD [ft]	End TVD [ft]	Start N/S [ft]	Start E/W [ft]	End N/S [ft]	End E/W [ft]
9.625in Casing Surface	23.00	1500.00	1477.00	23.00	1500.00	0.00	0.00	0.00	0.00



Planned Wellpath Report

SALT RANCH FEE #207-2029H PWP Rev-A.0
Page 7 of 8



REFERENCE WELLPATH IDENTIFICATION			
Operator	UPLAND EXPLORATION	Well	SALT RANCH FEE #207-2029H
Field	WELD COUNTY (TRUE NORTH NAD 83)	API/Legal	
Facility	SEC.18-T11N-R64W	Wellbore	SALT RANCH FEE #207-2029H PWB
Slot	SLOT#02 SALT RANCH FEE #207-2029H (331'FSL & 938'FEL,SEC.18)		

TARGETS									
Name	MD [ft]	TVD [ft]	North [ft]	East [ft]	Grid East [US ft]	Grid North [US ft]	Latitude	Longitude	Shape
SEC.20-T11N-R64W	N/A	0.00	0.00	-16.58	3253152.53	1577318.92	40.9145200	-104.5840800	polygon
	2D Polygon: dimensions not calculated								
SEC.20/29-T11N-R64W (SB 460')	N/A	0.00	0.00	-16.58	3253152.53	1577318.92	40.9145200	-104.5840800	polygon
	2D Polygon: dimensions not calculated								
SEC.29-T11N-R64W	N/A	0.00	0.00	-16.58	3253152.53	1577318.92	40.9145200	-104.5840800	polygon
	2D Polygon: dimensions not calculated								
3) SALT RANCH FEE #207-2029H BHL REV-1(300'FNL & 1019'FWL,SEC.20)	18531.52	7948.00	-10595.00	2093.18	3255371.67	1566746.05	40.8854400	-104.5764500	point
2) SALT RANCH FEE #207-2029H WP REV-1	13546.43	7968.00	-5610.79	2178.45	3255405.45	1571730.98	40.8991200	-104.5761400	point
1) SALT RANCH FEE #207-2029H LP REV-1(300'FNL & 1019'FWL,SEC.20)	8553.42	7974.00	-622.95	1951.37	3255126.85	1576716.32	40.9128100	-104.5769600	point

SURVEY PROGRAM -				
Ref Wellbore: SALT RANCH FEE #207-2029H PWB		Ref Wellpath: SALT RANCH FEE #207-2029H PWP Rev-A.0		
Start MD [ft]	End MD [ft]	Positional Uncertainty Model	Log Name/Comment	Wellbore
23.00	1500.00	BH NaviTrak (2019) (Axial)		SALT RANCH FEE #207-2029H PWB
1500.00	18531.52	BH AutoTrak Curve/eXpress (2019) (Short spacing)		SALT RANCH FEE #207-2029H PWB



Planned Wellpath Report

SALT RANCH FEE #207-2029H PWP Rev-A.0
Page 8 of 8



REFERENCE WELLPATH IDENTIFICATION			
Operator	UPLAND EXPLORATION	Well	SALT RANCH FEE #207-2029H
Field	WELD COUNTY (TRUE NORTH NAD 83)	API/Legal	
Facility	SEC.18-T11N-R64W	Wellbore	SALT RANCH FEE #207-2029H PWB
Slot	SLOT#02 SALT RANCH FEE #207-2029H (331'FSL & 938'FEL,SEC.18)		

WELLPATH COMMENTS				
MD [ft]	Inclination [°]	Azimuth [°]	TVD [ft]	Comment
250.00	0.000	94.883	250.00	Aquifer
1750.04	2.251	94.883	1750.00	Pierre Sh
2926.18	18.628	94.883	2900.00	Hygiene
3527.69	18.628	94.883	3470.00	Sussex
4551.31	18.628	94.883	4440.00	Shannon
8169.88	47.023	159.228	7836.00	Sharon Springs
8241.31	54.845	163.758	7881.00	Fort Hays
8308.50	62.328	167.278	7916.00	Niobrara

DESIGN COMMENTS				
MD [ft]	Inclination [°]	Azimuth [°]	TVD [ft]	Comment
23.00	0.000	94.883	23.00	Tie On
1600.00	0.000	94.883	1600.00	End of Tangent
2841.85	18.628	94.883	2820.09	Build (XS)
7822.76	18.628	94.883	7540.06	KOP
8553.42	90.069	177.393	7974.00	LANDING
13546.43	90.069	177.393	7968.00	WP1
13729.31	90.233	181.047	7967.52	3D Arc (J)
18531.52	90.233	181.047	7948.00	TD



Closest Approach Clearance Summary Report

SALT RANCH FEE #207-2029H PWP Rev-A.0 - SPE WPTS

Stop Drilling HSE Risk (2017)

Page 1 of 2



REFERENCE WELLPATH IDENTIFICATION

Operator	UPLAND EXPLORATION	Well	SALT RANCH FEE #207-2029H
Field	WELD COUNTY (TRUE NORTH NAD 83)	API/Legal	
Facility	SEC.18-T11N-R64W	Wellbore	SALT RANCH FEE #207-2029H PWB
Slot	SLOT#02 SALT RANCH FEE #207-2029H (331'FSL & 938'FEL,SEC.18)		

REPORT SETUP INFORMATION

Projection System	NAD83 / Lambert Colorado SP, Northern Zone (501), US feet	Software System	WellArchitect® 6.0
North Reference	True	User	Painsetr
Scale	1.000024	Report Generated	1/20/2022 at 1:45:40 PM
Convergence at slot	0.59° East	Database	WellArchitectDB

WELLPATH LOCATION

	Local coordinates		Grid coordinates		Geographic coordinates	
	North[ft]	East[ft]	Easting[US ft]	Northing[US ft]	Latitude	Longitude
Slot Location	0.00	16.58	3253169.11	1577319.09	40.9145200°	-104.5840200°
Facility Reference Pt			3253152.53	1577318.92	40.9145200°	-104.5840800°
Field Reference Pt			3264604.58	1572171.06	40.9000600°	-104.5428500°

WELLPATH DATUM

Calculation method	Minimum Curvature	Rig (23') (KB) to Facility Vertical Datum	5626.00ft
Horizontal Reference Pt	Slot	Rig (23') (KB) to Mean Sea Level	5626.00ft
Vertical Reference Pt	Rig (23') (KB)	Rig (23') (KB) to Ground Level at Slot (SLOT#02 SALT RANCH FEE #207-2029H (331'FSL & 938'FEL,SEC.18))	5626.00ft
MD Reference Pt	Rig (23') (KB)		
Field Vertical Reference	Mean Sea Level		

POSITIONAL UNCERTAINTY CALCULATION SETTINGS

Ellipse Confidence Limit	3.50 Std Dev	Ellipse Start MD	23.00ft	Surface Position Uncertainty	included
Declination	7.96° East of TN	Dip Angle	67.07°	Mag Field Strength	52252 nT
Slot Surface Uncertainty @1SD		Horizontal	0.100ft	Vertical	1.000ft
Facility Surface Uncertainty @1SD		Horizontal	8.200ft	Vertical	3.000ft

Positional Uncertainty values in the WELLPATH DATA table are the projection of the ellipsoid of uncertainty onto the vertical and horizontal planes



Closest Approach Clearance Summary Report

SALT RANCH FEE #207-2029H PWP Rev-A.0 - SPE WPTS
Stop Drilling HSE Risk (2017)
Page 2 of 2



REFERENCE WELLPATH IDENTIFICATION			
Operator	UPLAND EXPLORATION	Well	SALT RANCH FEE #207-2029H
Field	WELD COUNTY (TRUE NORTH NAD 83)	API/Legal	
Facility	SEC.18-T11N-R64W	Wellbore	SALT RANCH FEE #207-2029H PWB
Slot	SLOT#02 SALT RANCH FEE #207-2029H (331'FSL & 938'FEL,SEC.18)		

PROXIMITY-SCAN RULE			
Rule Name	SPE WPTS Stop Drilling HSE Risk (2017)	Rule Based On	Ratio
Plane of Rule	Closest Approach	Threshold Value	1.00
Include Casing & Hole Size	yes	Apply Cone of Safety	no

HOLE & CASING SECTIONS									
- Ref Wellbore: SALT RANCH FEE #207-2029H PWB					Ref Wellpath: SALT RANCH FEE #207-2029H PWP Rev-A.0				
String/Diameter	Start MD [ft]	End MD [ft]	Interval [ft]	Start TVD [ft]	End TVD [ft]	Start N/S [ft]	Start E/W [ft]	End N/S [ft]	End E/W [ft]
9.625in Casing Surface	23.00	1500.00	1477.00	23.00	1500.00	0.00	0.00	0.00	0.00

SURVEY PROGRAM -				
Ref Wellbore: SALT RANCH FEE #207-2029H PWB		Ref Wellpath: SALT RANCH FEE #207-2029H PWP Rev-A.0		
Start MD [ft]	End MD [ft]	Positional Uncertainty Model	Log Name/Comment	Wellbore
23.00	1500.00	BH NaviTrak (2019) (Axial)		SALT RANCH FEE #207-2029H PWB
1500.00	18531.52	BH AutoTrak Curve/eXpress (2019) (Short spacing)		SALT RANCH FEE #207-2029H PWB

CALCULATION RANGE & CUTOFF		
From: 23.00ft MD	To: 18531.52ft MD	C-C Cutoff: (none)

OFFSET WELL CLEARANCE SUMMARY (1 Offset Wellpath selected) Ratios are calculated in Closest Approach plane												
Offset Facility	Offset Slot	Offset Well	Offset Wellbore	Offset Wellpath	Wellbore Status	C-C Clearance Distance			Rule Separation Ratio			
						Ref MD [ft]	Min C-C Clear Dist [ft]	Diverging from MD [ft]	Ref MD of Min Ratio [ft]	Min Ratio	Min Ratio Dvrg from [ft]	Rule Status
SEC.18-T11N-R64W	SLOT#01 SALT RANCH FEE #201-1830H (332'FSL & 953'FEL,SEC.18)	SALT RANCH FEE #201-1830H	SALT RANCH FEE #201-1830H PWB	SALT RANCH FEE #201-1830H PWP Rev-A.0	Planned	23.00	16.58	18531.52	1670.11	0.89	18531.52	FAIL