

POINT	NAD 83		NAD 27	
SURFACE HOLE LOCATION	N:	1244380.55	N:	244383.44
	E:	3223223.61	E:	2223375.95
	LAT:	N40.0014571	LAT:	N40.0014736
	LONG:	W104.7031821	LONG:	W104.7026591
LANDING POINT LOCATION	N:	1244539.45	N:	244542.37
	E:	3227266.49	E:	2227418.74
	LAT:	N40.0017927	LAT:	N40.0018092
	LONG:	W104.6887463	LONG:	W104.6882239
BOTTOM OF PRODUCTION ZONE	N:	1251552.62	N:	251555.45
	E:	3227178.78	E:	2227330.97
	LAT:	N40.0210465	LAT:	N40.0210632
	LONG:	W104.6888304	LONG:	W104.6883081
BOTTOM HOLE LOCATION	N:	1251642.61	N:	251645.44
	E:	3227177.66	E:	2227329.85
	LAT:	N40.0212936	LAT:	N40.0213102
	LONG:	W104.6888314	LONG:	W104.6883092

LEGEND

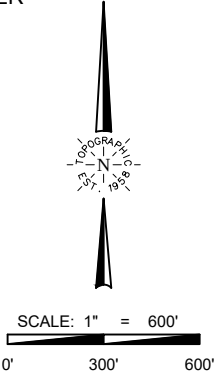
- COUNTY LINE
- RANGE/TOWNSHIP LINE
- SECTION LINE
- QUARTER SECTION LINE
- SIXTEENTH SECTION LINE
- POINT OF INTERSECTION
- MONUMENT FOUND
- CALCULATED CORNER

TOPOGRAPHIC
LOYALTY INNOVATION LEGACY

520 Stacy Court Ste B, Lafayette, CO 80026
303.666.0379 www.topographic.com

SURVEYOR'S STATEMENT
THE UNDERSIGNED HEREBY STATES THAT THE WELL LOCATION SHOWN HEREON WAS STAKED ON THE GROUND BASED ON EXISTING MONUMENTATION AND/OR PHYSICAL EVIDENCE FOUND IN THE FIELD AND IS CORRECT TO THE BEST OF MY KNOWLEDGE, INFORMATION AND BELIEF.

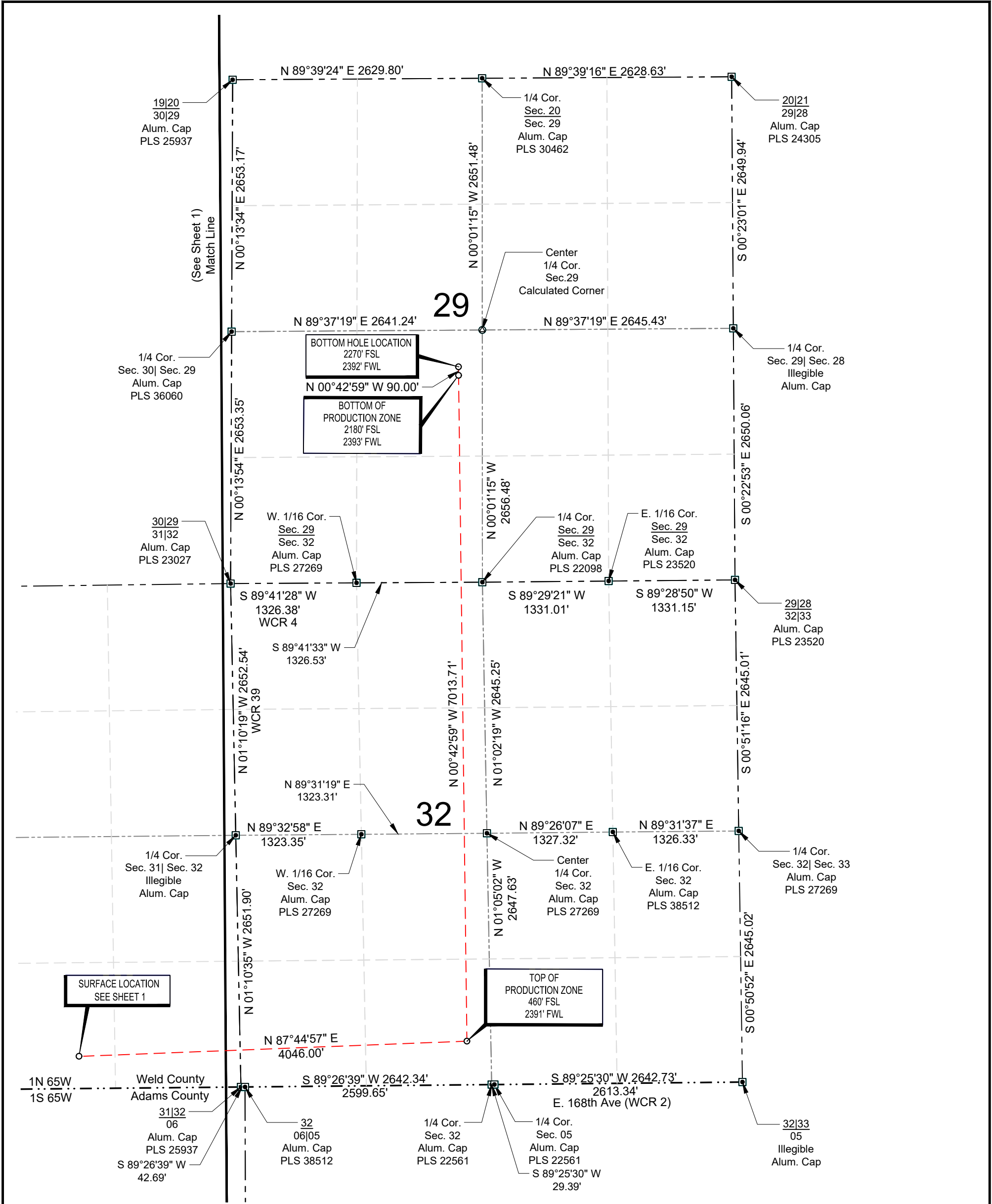
- NOTES**
- HORIZONTAL (NAD 83) AND VERTICAL (NAVD 88) DATUM IS BASED ON THE TRIMBLE VRS NETWORK. THE LINEAL UNITS OF MEASUREMENT ARE U.S. SURVEY FEET.
 - ALL DIRECTIONS, DISTANCES, AND DIMENSIONS SHOWN HEREON ARE BASED ON COORDINATES FROM THE "COLORADO COORDINATE SYSTEM OF 1983 NORTH ZONE" (TITLE 38, ARTICLE 52 C.R.S.).
 - ALL SECTION LINE DIMENSIONS SHOWN HEREON ARE BASED ON FIELD MEASUREMENTS OF EXISTING MONUMENTS AND/OR PHYSICAL EVIDENCE FOUND IN THE FIELD UNLESS OTHERWISE INDICATED.
 - PHYSICAL FEATURES SHOWN HEREON ARE FOR GRAPHICAL REPRESENTATION ONLY.
 - DISTANCES TO NEAREST SECTION LINES ARE MEASURED PERPENDICULARLY.
 - THIS IS NOT A LAND SURVEY NOR LAND SURVEY PLAT.
 - PDOP READING: 1.7 INSTRUMENT OPERATOR: T.ONLEY



VERDAD RESOURCES
COUNTY LINE 3229 21H

FIELD	12/10/2021	DRAFT	SW
REV 1	01/06/2022	CHECK	JRH
SHEET : 1 OF 2		JOB: 146029	

WELL LOCATION MAP
SHL SW/4 SE/4, SECTION 31 T1N R65W 6TH PM
TPZ SE/4 SW/4, SECTION 32 T1N R65W 6TH PM
BPZ NE/4 SW/4, SECTION 29 T1N R65W 6TH PM
BHL NE/4 SW/4, SECTION 29 T1N R65W 6TH PM
WELD COUNTY, COLORADO

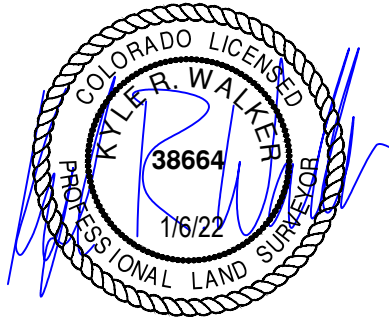
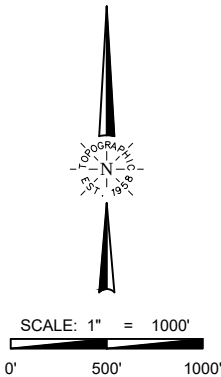


LEGEND

- COUNTY LINE
- RANGE/TOWNSHIP LINE
- SECTION LINE
- QUARTER SECTION LINE
- SIXTEENTH SECTION LINE
- POINT OF INTERSECTION
- MONUMENT FOUND
- CALCULATED CORNER

SURVEYOR'S STATEMENT
THE UNDERSIGNED HEREBY STATES THAT THE WELL LOCATION SHOWN HEREON WAS STAKED ON THE GROUND BASED ON EXISTING MONUMENTATION AND/OR PHYSICAL EVIDENCE FOUND IN THE FIELD AND IS CORRECT TO THE BEST OF MY KNOWLEDGE, INFORMATION AND BELIEF.

- NOTES**
- HORIZONTAL (NAD 83) AND VERTICAL (NAVD 88) DATUM IS BASED ON THE TRIMBLE VRS NETWORK. THE LINEAL UNITS OF MEASUREMENT ARE U.S. SURVEY FEET.
 - ALL DIRECTIONS, DISTANCES, AND DIMENSIONS SHOWN HEREON ARE BASED ON COORDINATES FROM THE "COLORADO COORDINATE SYSTEM OF 1983 NORTH ZONE" (TITLE 38, ARTICLE 52 C.R.S.).
 - ALL SECTION LINE DIMENSIONS SHOWN HEREON ARE BASED ON FIELD MEASUREMENTS OF EXISTING MONUMENTS AND/OR PHYSICAL EVIDENCE FOUND IN THE FIELD UNLESS OTHERWISE INDICATED.
 - PHYSICAL FEATURES SHOWN HEREON ARE FOR GRAPHICAL REPRESENTATION ONLY.
 - DISTANCES TO NEAREST SECTION LINES ARE MEASURED PERPENDICULARLY.
 - THIS IS NOT A LAND SURVEY NOR LAND SURVEY PLAT.
 - PDOP READING: 1.7 INSTRUMENT OPERATOR: T. ONLEY



VERDAD RESOURCES
COUNTY LINE 3229 21H

FIELD	12/10/2021	DRAFT	SW
REV 1	01/06/2022	CHECK	JRH
SHEET : 2 OF 2		JOB: 146029	

WELL LOCATION MAP
SHL SW/4 SE/4, SECTION 31 T1N R65W 6TH PM
TPZ SE/4 SW/4, SECTION 32 T1N R65W 6TH PM
BPZ NE/4 SW/4, SECTION 29 T1N R65W 6TH PM
BHL NE/4 SW/4, SECTION 29 T1N R65W 6TH PM
WELD COUNTY, COLORADO