

POINT	NAD 83		NAD 27	
SURFACE HOLE LOCATION	N:	1244380.12	N:	244383.01
	E:	3223178.62	E:	2223330.95
	LAT:	N40.0014570	LAT:	N40.0014736
	LONG:	W104.7033428	LONG:	W104.7028197
LANDING POINT LOCATION	N:	1244525.46	N:	244528.37
	E:	3225823.95	E:	2225976.23
	LAT:	N40.0017904	LAT:	N40.0018069
	LONG:	W104.6938958	LONG:	W104.6933732
BOTTOM OF PRODUCTION ZONE	N:	1251544.86	N:	251547.68
	E:	3225735.03	E:	2225887.25
	LAT:	N40.0210614	LAT:	N40.0210780
	LONG:	W104.6939854	LONG:	W104.6934629
BOTTOM HOLE LOCATION	N:	1251634.85	N:	251637.67
	E:	3225733.89	E:	2225886.11
	LAT:	N40.0213084	LAT:	N40.0213251
	LONG:	W104.6939866	LONG:	W104.6934641

LEGEND

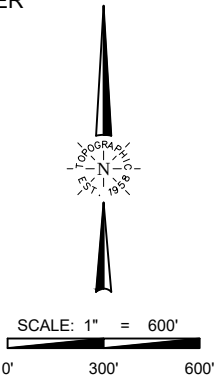
- COUNTY LINE
- RANGE/TOWNSHIP LINE
- SECTION LINE
- QUARTER SECTION LINE
- SIXTEENTH SECTION LINE
- POINT OF INTERSECTION
- MONUMENT FOUND
- CALCULATED CORNER

**TOPOGRAPHIC**  
LOYALTY INNOVATION LEGACY

520 Stacy Court Ste B, Lafayette, CO 80026  
303.666.0379 www.topographic.com

**SURVEYOR'S STATEMENT**  
THE UNDERSIGNED HEREBY STATES THAT THE WELL LOCATION SHOWN HEREON WAS STAKED ON THE GROUND BASED ON EXISTING MONUMENTATION AND/OR PHYSICAL EVIDENCE FOUND IN THE FIELD AND IS CORRECT TO THE BEST OF MY KNOWLEDGE, INFORMATION AND BELIEF.

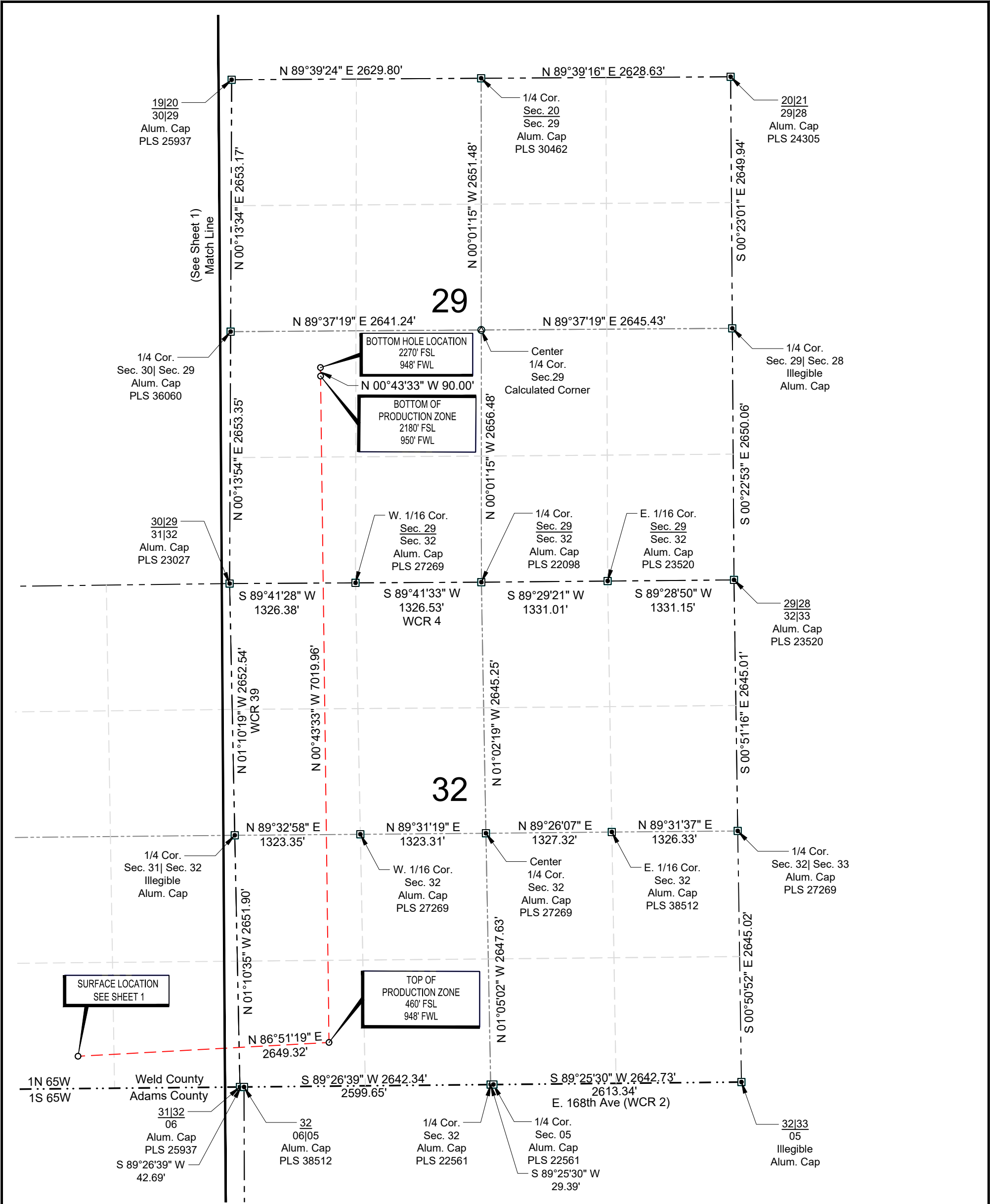
- NOTES**
- HORIZONTAL (NAD 83) AND VERTICAL (NAVD 88) DATUM IS BASED ON THE TRIMBLE VRS NETWORK. THE LINEAL UNITS OF MEASUREMENT ARE U.S. SURVEY FEET.
  - ALL DIRECTIONS, DISTANCES, AND DIMENSIONS SHOWN HEREON ARE BASED ON COORDINATES FROM THE "COLORADO COORDINATE SYSTEM OF 1983 NORTH ZONE" (TITLE 38, ARTICLE 52 C.R.S.).
  - ALL SECTION LINE DIMENSIONS SHOWN HEREON ARE BASED ON FIELD MEASUREMENTS OF EXISTING MONUMENTS AND/OR PHYSICAL EVIDENCE FOUND IN THE FIELD UNLESS OTHERWISE INDICATED.
  - PHYSICAL FEATURES SHOWN HEREON ARE FOR GRAPHICAL REPRESENTATION ONLY.
  - DISTANCES TO NEAREST SECTION LINES ARE MEASURED PERPENDICULARLY.
  - THIS IS NOT A LAND SURVEY NOR LAND SURVEY PLAT.
  - PDOP READING: 1.7 INSTRUMENT OPERATOR: T.ONLEY



VERDAD RESOURCES COUNTY LINE 3229 18H			
FIELD	12/10/2021	DRAFT	SW
REV 1	01/06/2022	CHECK	JRH
SHEET : 1 OF 2		JOB: 146029	

**WELL LOCATION MAP**

SHL SW/4 SE/4, SECTION 31 T1N R65W 6TH PM  
TPZ SW/4 SW/4, SECTION 32 T1N R65W 6TH PM  
BPZ NW/4 SW/4, SECTION 29 T1N R65W 6TH PM  
BHL NW/4 SW/4, SECTION 29 T1N R65W 6TH PM  
WELD COUNTY, COLORADO



LEGEND

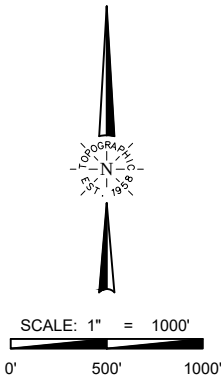
- COUNTY LINE
- RANGE/TOWNSHIP LINE
- SECTION LINE
- QUARTER SECTION LINE
- SIXTEENTH SECTION LINE
- POINT OF INTERSECTION
- MONUMENT FOUND
- ⊙ CALCULATED CORNER



**TOPOGRAPHIC**  
LOYALTY INNOVATION LEGACY  
520 Stacy Court Ste B, Lafayette, CO 80026  
303.666.0379 www.topographic.com

**SURVEYOR'S STATEMENT**  
THE UNDERSIGNED HEREBY STATES THAT THE WELL LOCATION SHOWN HEREON WAS STAKED ON THE GROUND BASED ON EXISTING MONUMENTATION AND/OR PHYSICAL EVIDENCE FOUND IN THE FIELD AND IS CORRECT TO THE BEST OF MY KNOWLEDGE, INFORMATION AND BELIEF.

- NOTES**
1. HORIZONTAL (NAD 83) AND VERTICAL (NAVD 88) DATUM IS BASED ON THE TRIMBLE VRS NETWORK. THE LINEAL UNITS OF MEASUREMENT ARE U.S. SURVEY FEET.
  2. ALL DIRECTIONS, DISTANCES, AND DIMENSIONS SHOWN HEREON ARE BASED ON COORDINATES FROM THE "COLORADO COORDINATE SYSTEM OF 1983 NORTH ZONE" (TITLE 38, ARTICLE 52 C.R.S.).
  3. ALL SECTION LINE DIMENSIONS SHOWN HEREON ARE BASED ON FIELD MEASUREMENTS OF EXISTING MONUMENTS AND/OR PHYSICAL EVIDENCE FOUND IN THE FIELD UNLESS OTHERWISE INDICATED.
  4. PHYSICAL FEATURES SHOWN HEREON ARE FOR GRAPHICAL REPRESENTATION ONLY.
  5. DISTANCES TO NEAREST SECTION LINES ARE MEASURED PERPENDICULARLY.
  6. THIS IS NOT A LAND SURVEY NOR LAND SURVEY PLAT.
  7. PDOP READING: 1.7 INSTRUMENT OPERATOR: T. ONLEY



VERDAD RESOURCES COUNTY LINE 3229 18H			
FIELD	12/10/2021	DRAFT	SW
REV 1	01/06/2022	CHECK	JRH
SHEET : 2 OF 2		JOB: 146029	

WELL LOCATION MAP

SHL SW/4 SE/4, SECTION 31 T1N R65W 6TH PM

TPZ SW/4 SW/4, SECTION 32 T1N R65W 6TH PM

BPZ NW/4 SW/4, SECTION 29 T1N R65W 6TH PM

BHL NW/4 SW/4, SECTION 29 T1N R65W 6TH PM

WELD COUNTY, COLORADO