

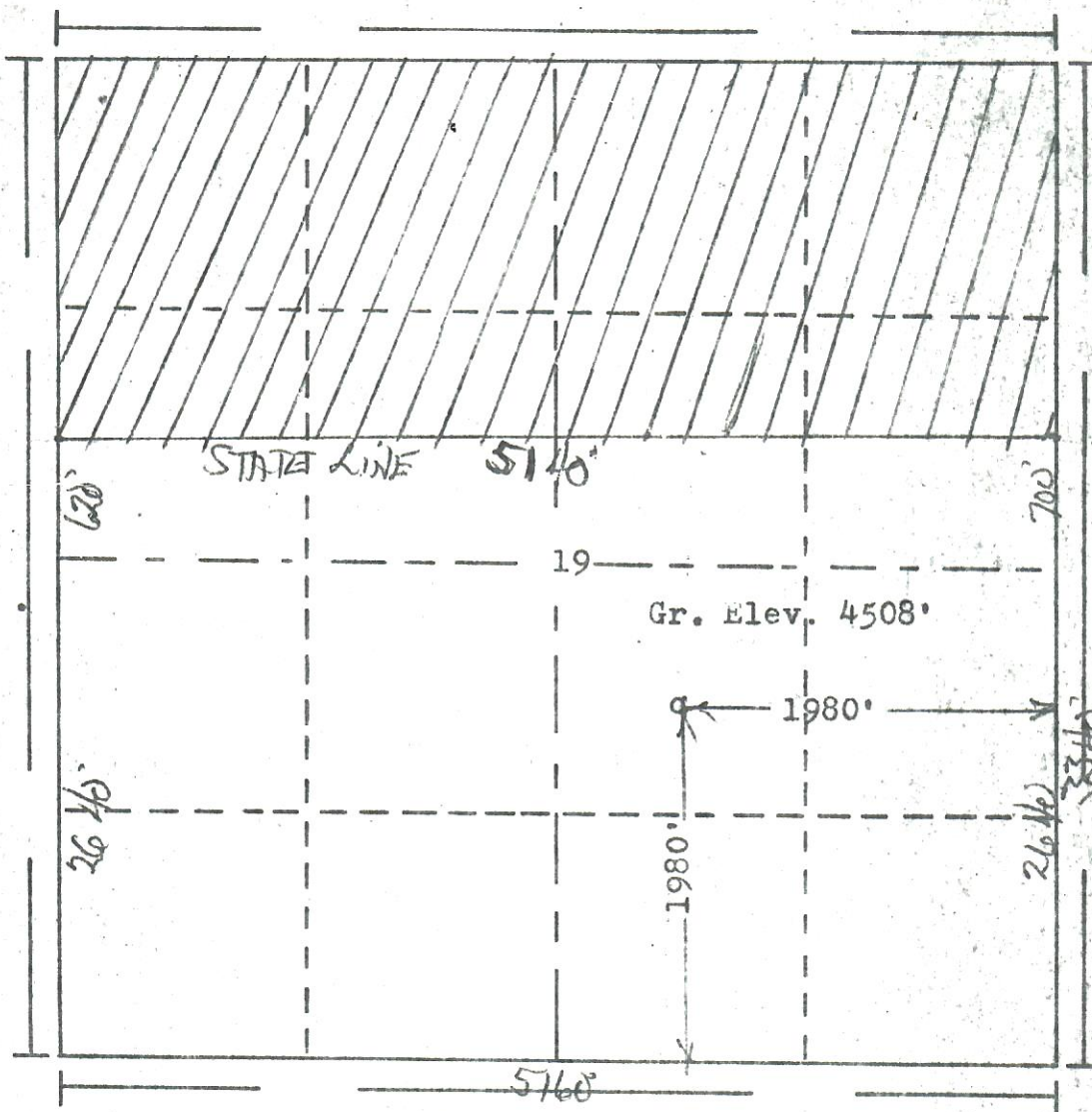


FORM F-106

RECEIVED

NOV 14 1973

R. 52W COLO. OIL & GAS CONS. COMP.



Scale... 1" = 1000'

Powers Elevation Company, Inc. of Denver, Colorado
has in accordance with a request from r. Gear
for The Colton Co.

determined the location of No.1 Madden-Hiett
to be CNW SE Section 19 Township 12N
Range 52W of the 6th Principal Meridian
Logan County, Colorado



00290645

I hereby certify that this plat is an
accurate representation of a correct
survey showing the location of

Date: 11-3-78

Brian D. Holloway
Licensed Land Surveyor No. 2853
State of Colorado