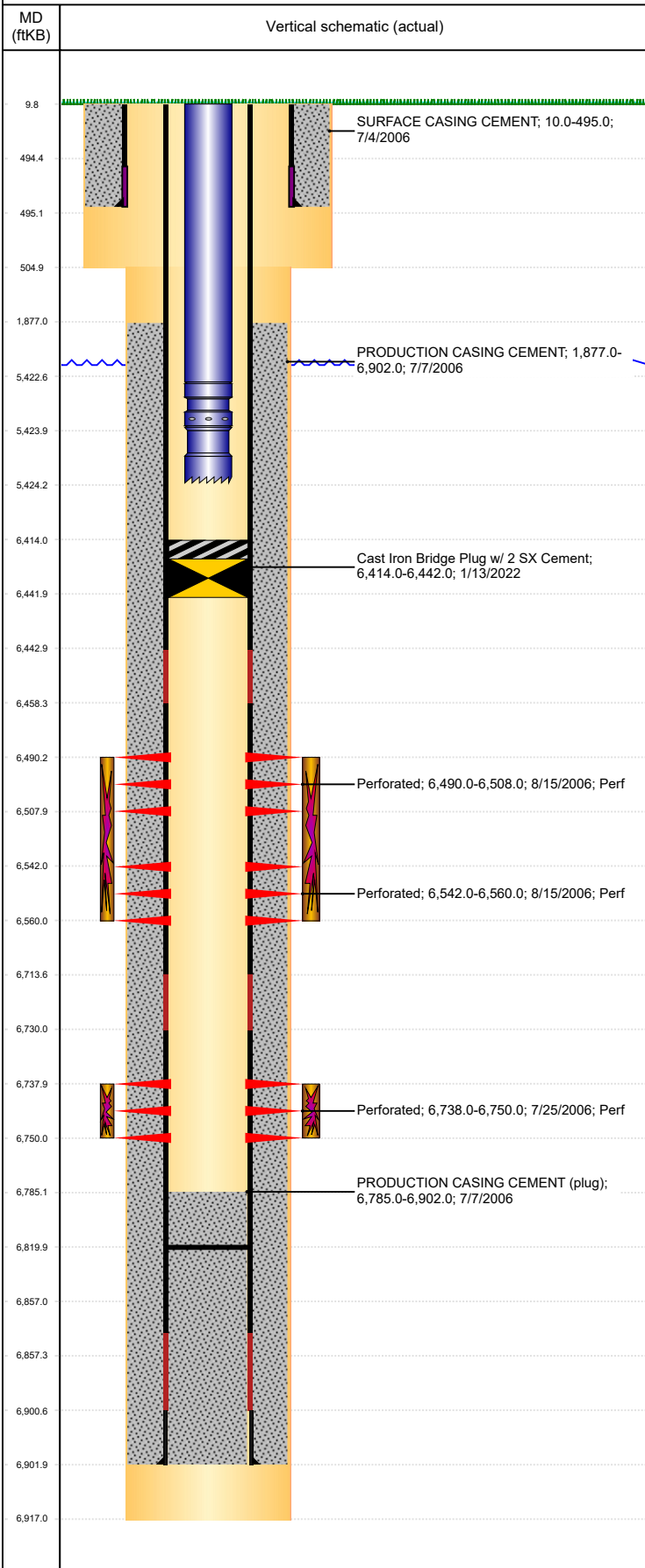


Well Name: LUCCI B 01-25

VERTICAL, ORIGINAL HOLE, 1/27/2022 9:54:21 AM



Well Header									
API 05-123-29983		Business Unit DJ BASIN		District 15		Well Config VERTICAL			
KB - GL / MSL (ft... 10.00		Spud Date 7/3/2006		P & A Date		Well Production Status TA		SoRT Yes	
Comment PLUG DRILL OUT & PUSH TO 6857'									
Surface Location (Congressional)									
Qtr 3 NW	Qtr 4 SW	Section 1	Twonshp 5	Twonsh... N	Range 64	Rng E/... W	Actual Latitude (°) 40.42482737	Actual Longitude (°) -104.50327956	
Wellbore Sections									
Section Des		Size (in)		Act Top, MD (ftKB)		Act Btm, MD (ftKB)			
SURFACE		12 1/4		10		505			
PRODUCTION		7 7/8		505		6,917			
Casing Strings									
Csg Des		Run Date		OD (in)	Wt/Len (lb/ft)	Grade	Top, MD (ftKB)	MD (ftKB)	
Surface		7/4/2006		8 5/8	24.00	J-55	10.0	495.0	
Production		7/8/2006		4 1/2	11.60	M-80	10.0	6,902.0	
Cement									
Des		Start Date		Top (ftKB)		Btm (ftKB)			
SURFACE CASING CEMENT		7/4/2006		10.0		495.0			
PRODUCTION CASING CEMENT		7/7/2006		1,877.0		6,902.0			
Zone Statuses									
Zone Name		Status Date	Status	Fluid Type		Job		Prod Method	
NBRR		8/17/2006	TA			DRILLING/COMPLETION - ORIGINAL, 6/1/2006...			
CODL		8/17/2006	TA			DRILLING/COMPLETION - ORIGINAL, 6/1/2006...			
Perforation Data									
Linked Zone		Bnch/Stg	Entered Shot Total	Top (ftKB)	Btm (ftKB)	Date			
NBRR, ORIGINAL HOLE			108	6,490.00	6,508.00	8/15/2006			
NBRR, ORIGINAL HOLE			72	6,542.00	6,560.00	8/15/2006			
CODL, ORIGINAL HOLE			48	6,738.00	6,750.00	7/25/2006			
Stimulation Intervals									
Zone		Start Date		Top (ftKB)		Btm (ftKB)			
NBRR, ORIGINAL HOLE		8/15/2006		6,490.0		6,560.0			
CODL, ORIGINAL HOLE		8/15/2006		6,738.0		6,750.0			
Other In Hole									
Run Date		Des		Make		OD (in)	Top (ftKB)	Btm (ftKB)	
1/13/2022		Cast Iron Bridge Plug w/ 2 SX Cement				3.99	6,414.0	6,442.0	
Logs									
Date		Type				Top, MD (ftKB)	Btm, MD (ftKB)		
7/7/2006		COMPENSATED DENSITY/NEUTRON/MICRO				495.0	6,892.0		
7/7/2006		INDUCTION				495.0	6,912.0		
7/20/2006		CBL/CCL/GR				1,701.0	6,785.0		
11/14/2012		GYRO				10.0	6,700.0		
Plug Back Total Depths									
Date		Type		Com			Depth (ftKB)		
8/20/2006		FILL		DEPTH LOGGER - CBL			6,785.0		
4/19/2013		FILL		TAGGED WITH BIT & SCRAPER.			6,820.0		