

**Location Name: APACHE CANYON 04-15, API #: 071-09570, Insp. #:695105563**



**PHOTO 1: LOCATION**



**OGRIS**  
OPERATING, LLC

**719-497-0446**

or EMERGENCY 911

WDID 1912585

PERMIT 71351

APACHE CANYON 04-15

SW/SE 4-34S-67W

**NAD 83**

LAT. 37.108369

LONG. -104.891253





**PHOTO 3: WELL EQUIPMENT**



WGS84  
±16ft

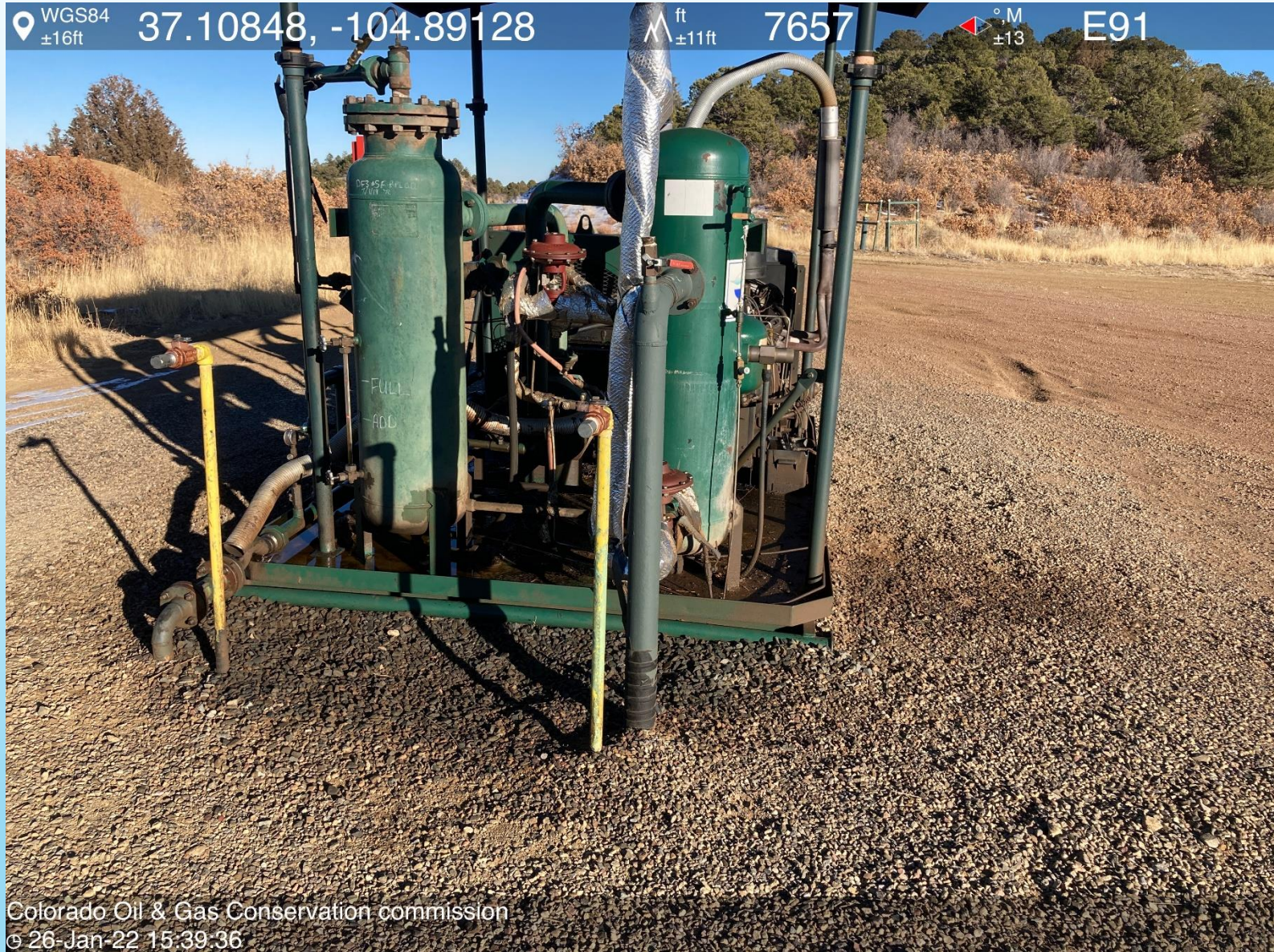
37.10848, -104.89128

ft  
±11ft

7657

°M  
±13

E91



Colorado Oil & Gas Conservation commission  
© 26-Jan-22 15:39:36







WGS84  
±16ft

37.10837, -104.89139

ft  
±11ft

7665

°M  
±13

W266



Colorado Oil & Gas Conservation commission  
© 26-Jan-22 15:37:32







WGS84  
±16ft

37.10850, -104.89123

ft  
±11ft 7658

°M  
±13

S172



Colorado Oil & Gas Conservation commission  
© 26-Jan-22 15:40:07