

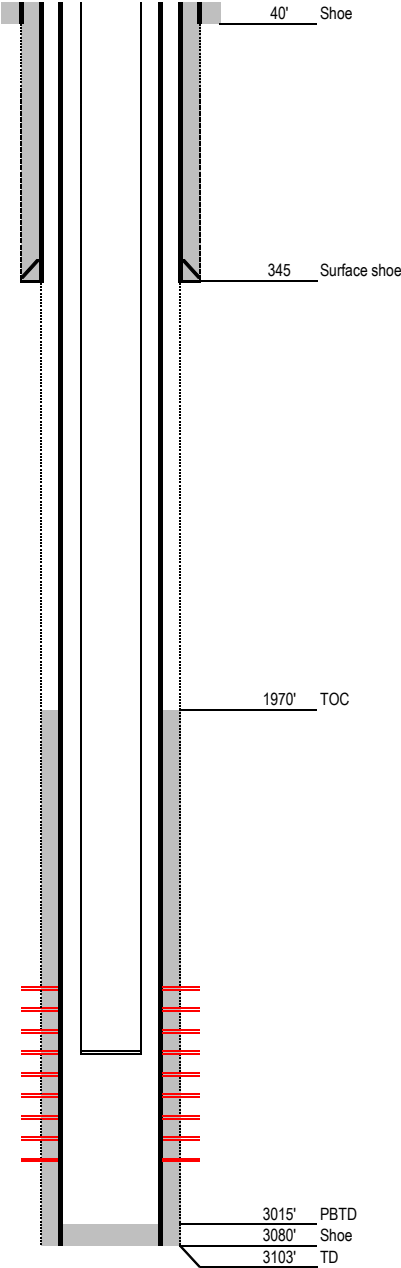
# Laramie Energy

## Current Wellbore Diagram

Not to Scale

FEDERAL WELL: YES ☒ NO ☐

Geological Tops	Depth (MD)
Cameo	1895'
Rollins	2341'
Cozzette	2621'
Corcoran	2917'



**Well Name** Mesa 18-10E  
**API** 05-077-08667-00  
**Surface Location** NWSE S18, T9S, R97W  
**GPS Coordinates** 39.270884 -108.258648  
**Bottom Hole Loc** 1526 FSL & 740 FEL  
**Field** Shire Gulch # 77450  
**County, State** Mesa, CO # 077  
**Spud Date**  
**Completion Date** 11/30/1994  
**Diagram Date** 1/26/2022  
**KB Elevation** 4885'  
**KB** 11'  
**GL Elevation** 4874'

Hole	-
Conductor	16" .25" wall @ 40'
Cement	Surface

<b>Surface Hole</b>	12.25" @ 345'
Casing	8-5/8" 24 ppf J55 STC @ 345'
Cement	195 sx
TOC	Surface

<b>Production Hole</b>	7.875" @ 3103'
Casing	4-1/2" 11.6 ppf K55 LTC @ 3080'
Cement	
TOC	1970' per RMWS CBL dated 11/12/94

<b>Tubing</b>	2 3/8" 4.7 ppf J55 EUE @ 2752'
---------------	--------------------------------

Perforations	Top	Bottom
	2680'	2972'

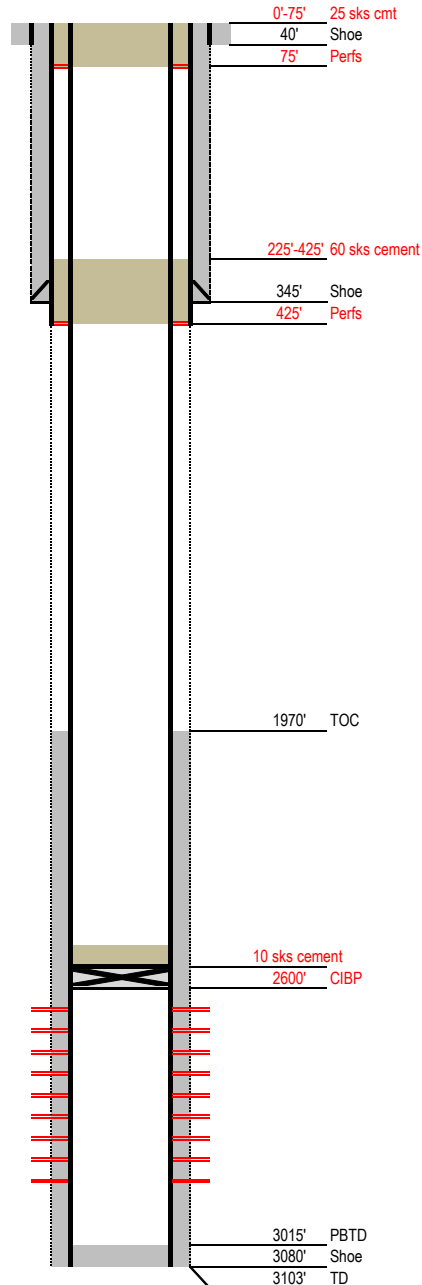
# Laramie Energy

## Proposed P&A Wellbore Diagram

Not to Scale

FEDERAL WELL: YES ☒ NO ☐

Geological Tops	Depth (MD)
Cameo	1895'
Rollins	2341'
Cozzette	2621'
Corcoran	2917'



**Well Name** Mesa 18-10E  
**API** 05-077-08667-00  
**Surface Location** NWSE S18, T9S, R97W  
**GPS Coordinates** 39.270884 -108.258648  
**Bottom Hole Loc** 1526 FSL & 740 FEL  
**Field** Shire Gulch # 77450  
**County, State** Mesa, CO # 077  
**Spud Date**  
**Completion Date** 11/30/1994  
**Diagram Date** 1/26/2022  
**KB Elevation** 4885'  
**KB** 11'  
**GL Elevation** 4874'

Hole	-
Conductor	16" .25" wall @ 40'
Cement	Surface

<b>Surface Hole</b>	12.25" @ 345'
Casing	8-5/8" 24 ppf J55 STC @ 345'
Cement	195 sx
TOC	Surface

<b>Production Hole</b>	7.875" @ 3103'
Casing	4-1/2" 11.6 ppf K55 LTC @ 3080'
Cement	
TOC	1970' per RMWS CBL dated 11/12/94

<b>Tubing</b>
---------------

Perforations	Top	Bottom
	2680'	2972'