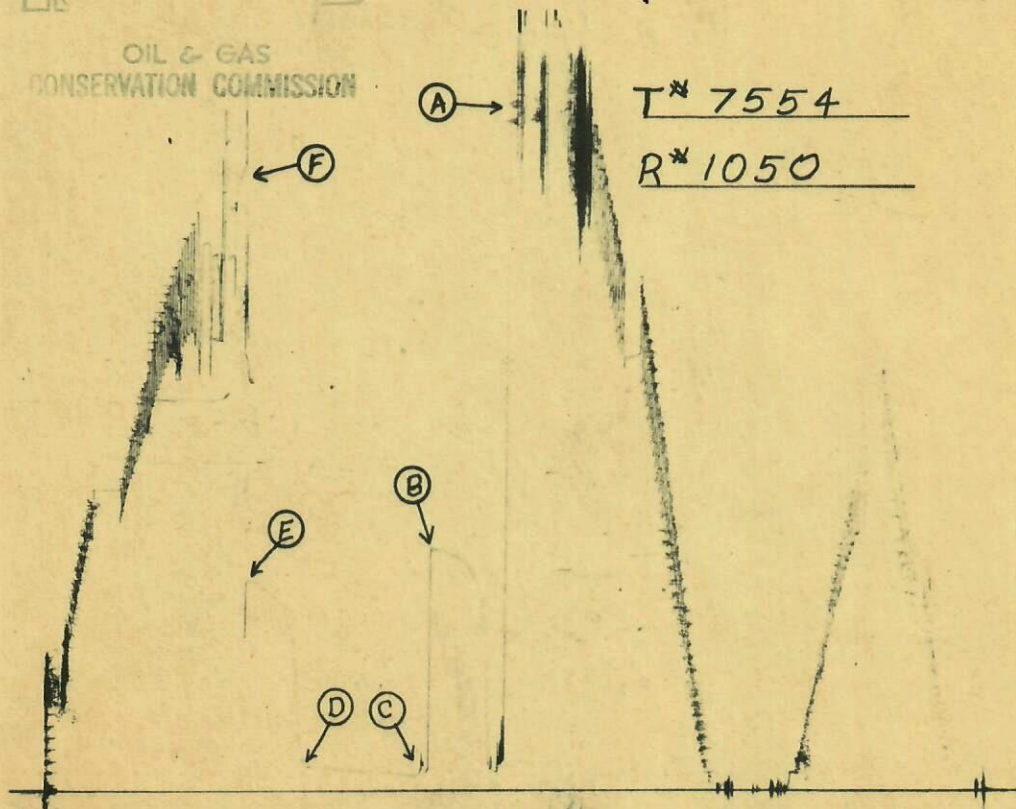




PHONE 522-1206 AREA 303

VIRG'S TESTERS, INC.

BOX 712 STERLING, COLORADO

RECEIVED  
MAR 25 1965OIL & GAS  
CONSERVATION COMMISSION

Company Operating Well:

Skinner Corp.

Address:

See Slip

Contractor and Rig No.:

Exeter Drlg. Co. Rig# 2

Well Name and No.:

State # 1-36

County State

Logan Colorado

Sec. Twnp. Rng.

36 12 N 52 W

Ticket DST No. Tester

7554 1 Rittenhouse

Date of Test and Formation Tested

3-1-65 "D" Sand

Field  
PressureCorrected  
Pressure

## RESULTS

No. Final Copies 11

Initial Hydrostatic: A 2680 2697

Final Hydrostatic: F 2671 2600

Initial Flow: C 75 67

Final Flow: D 100 103

Initial Shut-in: B 1017 1027

Final Shut-in: E 876 887

Pressure below bottom  
packer bled to: 2400 2400

Total Depth 5221 Interval Tested 5048 to 5078  
Tool open 8 Min. before Initial Shut-in 30 Min.  
Tool open 60 Min. Total Final Shut-in 31 Min.  
Tool open @ 9:10 p. M. Mud Wt. 9.9 Viscosity 75  
Did well flow Gas? No Oil? No Water? No  
Was blow measured? No

Top Choke 1" Bottom Choke 9/16" Size and Wt. D.P. 4 1/2" FH  
Recorder No. 1050 Run at 5075 I.D. & Length of D.C.s 2 3/4"  
Was this a straddle test? Yes Witnessed by: Emmitt Taylor  
Recovery in Pipe 180' total fluid. 150' mud cut water and  
30' drilling mud.

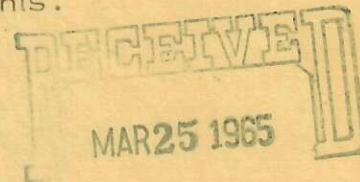
## REMARKS:

Tool opened with very weak blow for 8 minutes before taking ISI.  
Reopened tool for test with no blow for 10 minutes then had a very  
weak blow throughout test. BHT 160°.

Test Conclusive.



Skinner Corp., Etal.  
State # 1-36      DST # 1  
Pressure readings in 3 minute increments.



OIL & GAS  
CONSERVATION COMMISSION

Initial Shut-in

3 mins.	719	lbs.
6 "	880	"
9 "	939	"
12 "	965	"
15 "	982	"
18 "	995	"
21 "	1003	"
24 "	1012	"
27 "	1018	"
30 "	1027	"

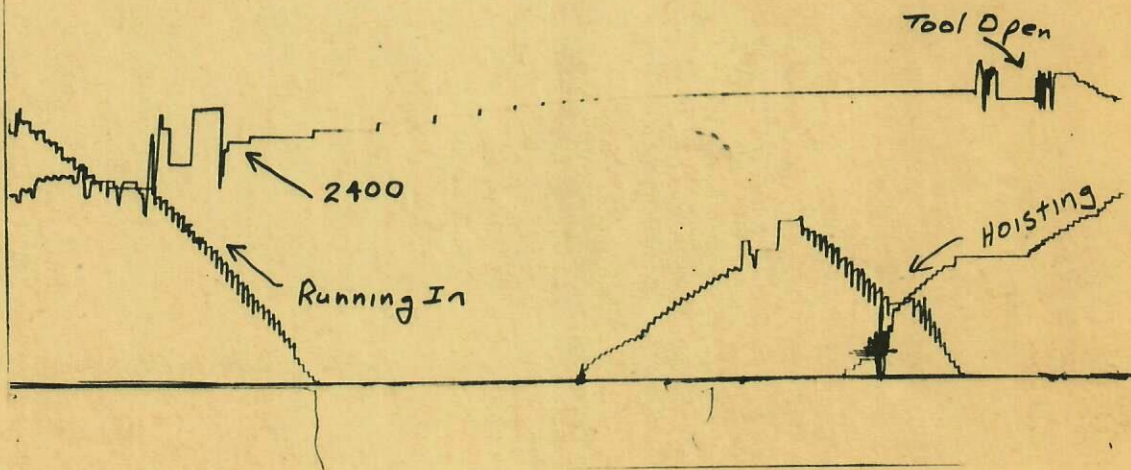
Final Shut-in

3 mins.	297	lbs.
6 "	586	"
9 "	705	"
12 "	766	"
15 "	804	"
18 "	827	"
21 "	847	"
24 "	862	"
27 "	874	"
30 "	883	"
31 "	887	" (actual)

Skinner Corp., Etal  
State # 1-36 DST # 1

T\* 7554      R\* VT-36

Bottom Chart



This recorder blanked off below the bottom packer and since pressure bled to only 2400 lbs., which is more than the shut-in pressure, the bottom packer held. Recorder No. VT-36.